

Hog Prices



May 12, 2026

[Click here for definitions of how data is collected and calculated.](#)

Exchange rates (Friday close)

1 US \$ = C \$1.3686

1 EURO = C \$1.6116

1 Yen = C \$0.00874

[Data source: Bank of Canada](#)

[Click to view the interactive hog dashboards for current and historical charts.](#)

Manitoba Weighted Average Carcass Prices (including premiums and discounts)

All In Weights C\$/100 kg

| Week | Week ending date | 2026 | 2025 | Change from Previous Week | Change from Previous Year |
|--------------------------|------------------|---------------|---------------|---------------------------|---------------------------|
| 16 | 2026-04-17 | 248.14 | 237.58 | 0.4% | 4.4% |
| 17 | 2026-04-24 | 247.06 | 241.20 | -0.4% | 2.4% |
| 18 | 2026-05-01 | 247.96 | 245.87 | 0.4% | 0.9% |
| 19 | 2026-05-08 | 247.10 | 247.64 | -0.3% | -0.2% |
| Four week average | | 247.57 | 243.08 | - | 0.02 |

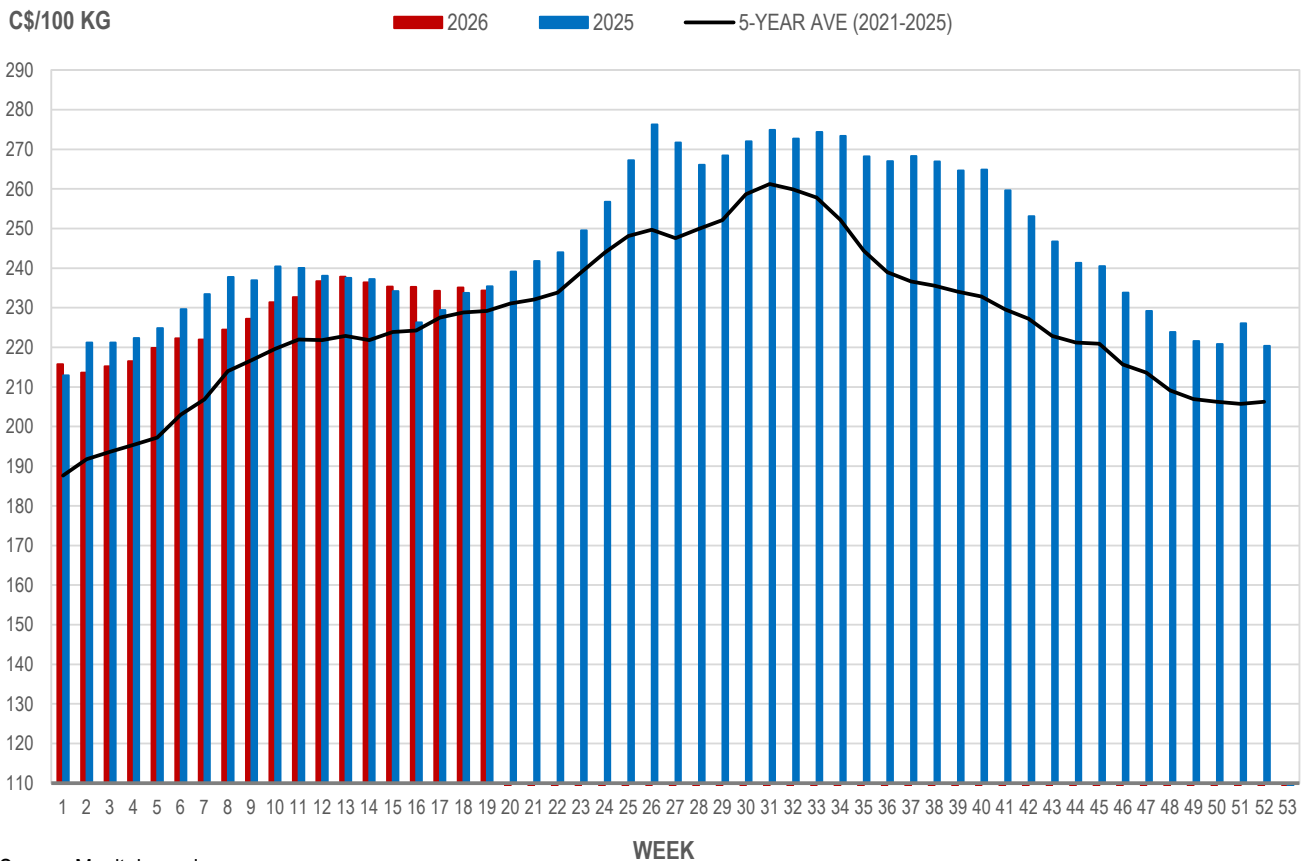
Source: Manitoba major processors.

Index 100, C\$/100 kg

| Week | Week ending date | 2026 | 2025 | Change from Previous Week | Change from Previous Year |
|--------------------------|------------------|---------------|---------------|---------------------------|---------------------------|
| 16 | 2026-04-17 | 235.30 | 226.30 | 0.0% | 4.0% |
| 17 | 2026-04-24 | 234.24 | 229.39 | -0.5% | 2.1% |
| 18 | 2026-05-01 | 235.14 | 233.76 | 0.4% | 0.6% |
| 19 | 2026-05-08 | 234.33 | 235.44 | -0.3% | -0.5% |
| Four week average | | 234.75 | 231.22 | - | 0.02 |

Source: Manitoba major processors.

MANITOBA WEIGHTED AVERAGE INDEX 100 HOG PRICES WEEKLY



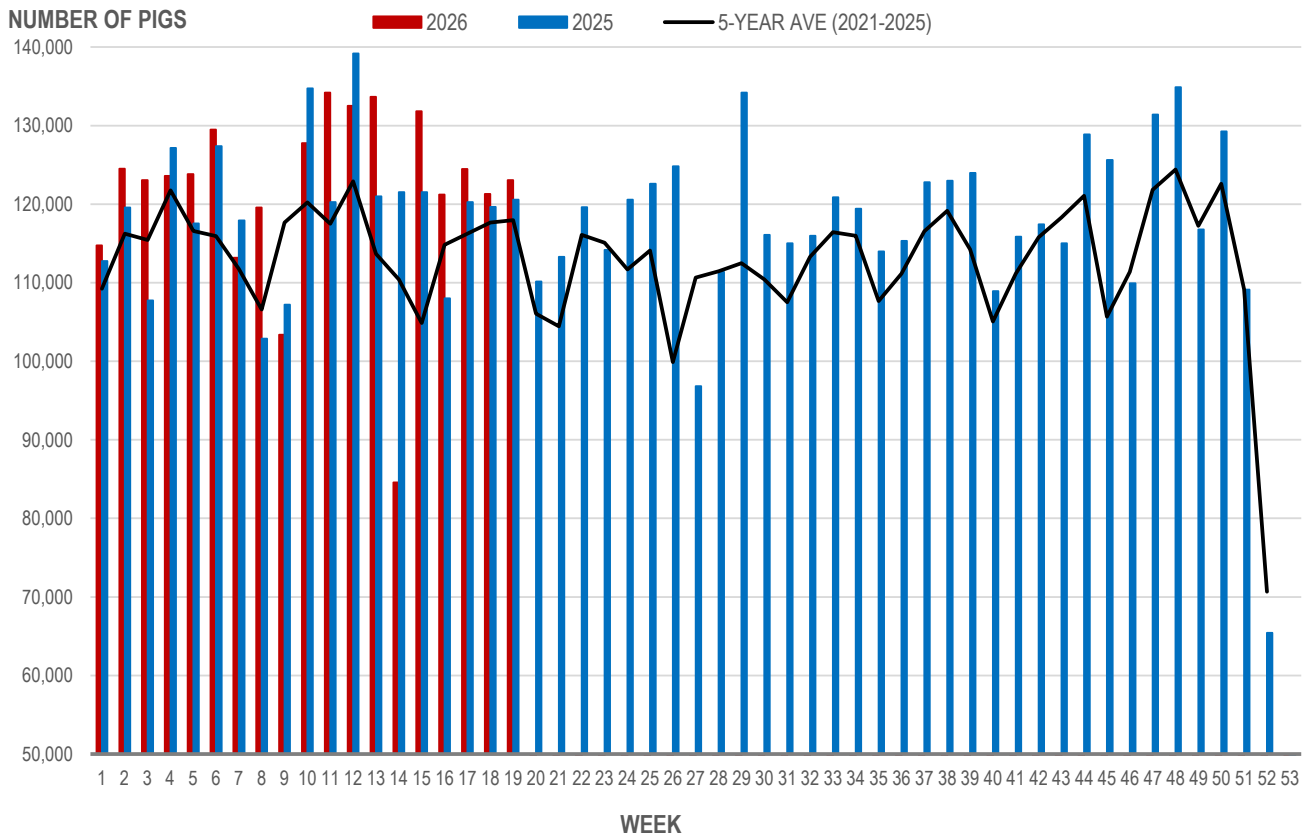
Source: Manitoba major processors

Number of Pigs Processed by Major Processors

| Week | Week ending date | 2026 | 2025 | Change from Previous Week | Change from Previous Year |
|--------------------------|------------------|----------------|----------------|---------------------------|---------------------------|
| 16 | 2026-04-17 | 121,229 | 108,020 | -8.0% | 12.2% |
| 17 | 2026-04-24 | 124,478 | 120,272 | 2.7% | 3.5% |
| 18 | 2026-05-01 | 121,288 | 119,661 | -2.6% | 1.4% |
| 19 | 2026-05-08 | 123,050 | 120,557 | 1.5% | 2.1% |
| Four week average | | 122,511 | 117,128 | - | 0.05 |

Source: Manitoba major processors.

NUMBER OF PIGS PROCESSED BY MAJOR PROCESSORS WEEKLY



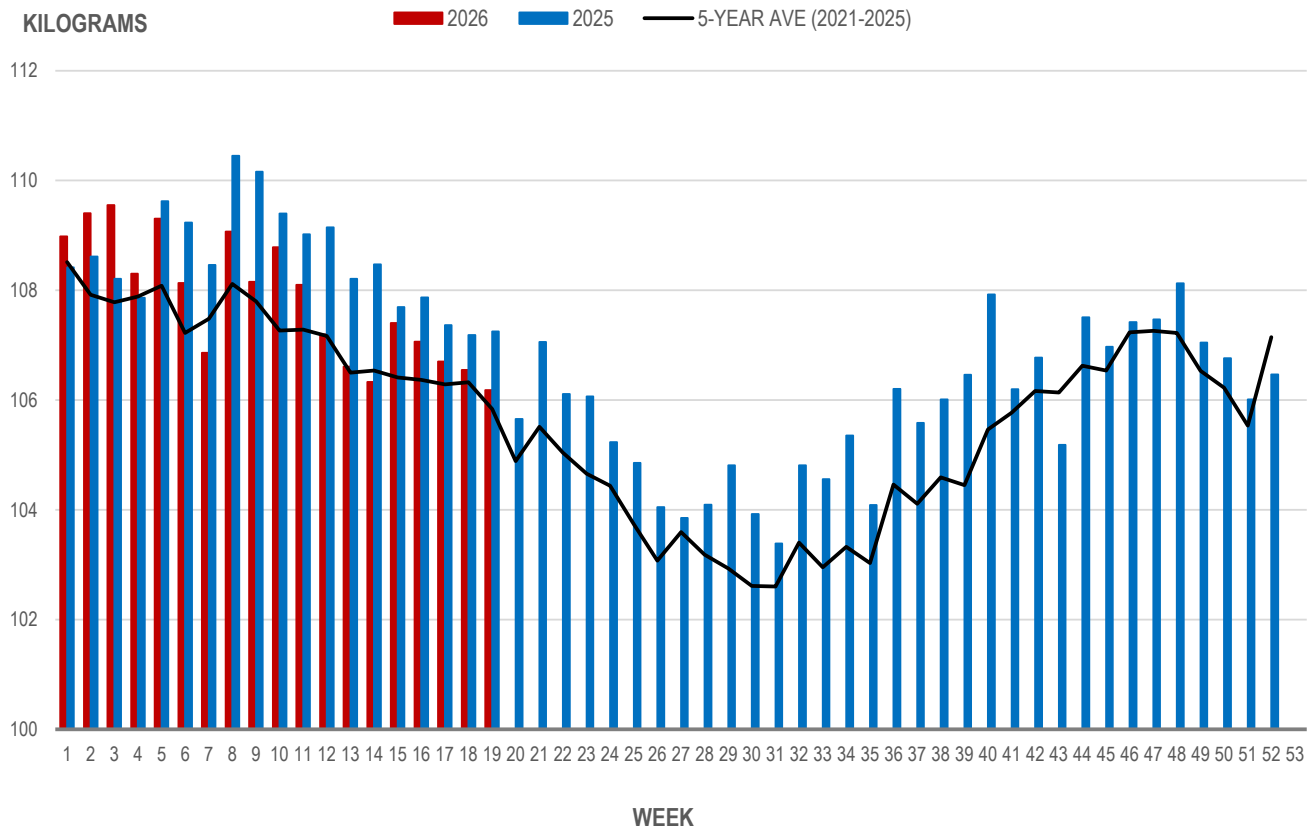
Source: Manitoba major processors

Average Weight of Hogs Processed by Major Processors, Kg

| Week | Week ending date | 2026 | 2025 | Change from Previous Week | Change from Previous Year |
|--------------------------|------------------|---------------|---------------|---------------------------|---------------------------|
| 16 | 2026-04-17 | 107.06 | 107.87 | -0.3% | -0.7% |
| 17 | 2026-04-24 | 106.70 | 107.37 | -0.3% | -0.6% |
| 18 | 2026-05-01 | 106.55 | 107.18 | -0.1% | -0.6% |
| 19 | 2026-05-08 | 106.18 | 107.25 | -0.3% | -1.0% |
| Four week average | | 106.62 | 107.42 | - | -0.01 |

Source: Manitoba major processors.

AVERAGE WEIGHT OF HOGS PROCESSED BY MAJOR PROCESSORS WEEKLY



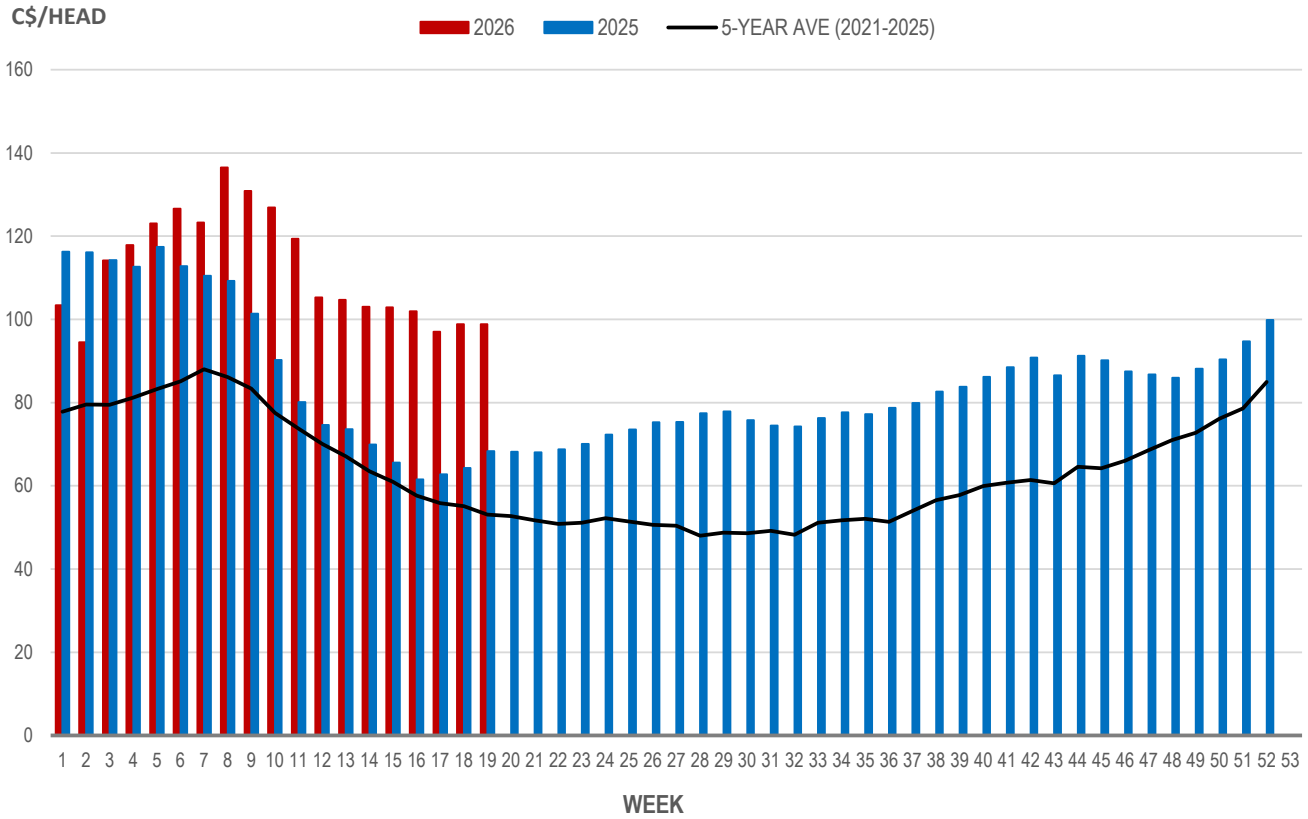
Source: Manitoba major processors

Weaning Pigs (U.S. Total Composite Weighted Average Price per Head)

| | Formula and Cash Low, US\$/Head | Formula and Cash High, US\$/Head | Wtd Avg Price, US\$/Head | Wtd Avg Price, C\$/Head |
|-------------------------|---------------------------------|----------------------------------|--------------------------|-------------------------|
| Early Weaned (10-12 lb) | 48.27 | 89.00 | 72.23 | 98.85 |
| Feeder Pigs (40 lb) | 90.00 | 124.00 | 108.55 | 148.56 |

Source: USDA, AMS

EARLY WEANED PIGS (U.S. TOTAL COMPOSITE WEIGHTED AVERAGE PRICE PER HEAD) WEEKLY



Source: USDA, AMS

Contact us

- www.manitoba.ca/agriculture/markets-and-statistics/
- Email us at industryintelligence@gov.mb.ca
- Follow us on X @MBGovAg

