

MANITOBA MARKETS

Hog Prices



June 16, 2026

[Click here for definitions of how data is collected and calculated.](#)

Exchange rates (Friday close)

1 US \$ = C \$1.3977

1 EURO = C \$1.6175

1 Yen = C \$0.00872

[Data source: Bank of Canada](#)

[Click to view the interactive hog dashboards for current and historical charts.](#)

Manitoba Weighted Average Carcass Prices (including premiums and discounts)

All In Weights C\$/100 kg

| Week | Week ending date | 2026 | 2025 | Change from Previous Week | Change from Previous Year |
|--------------------------|------------------|---------------|---------------|------------------------------|------------------------------|
| 21 | 2026-05-22 | 247.98 | 252.51 | -0.3% | -1.8% |
| 22 | 2026-05-29 | 251.33 | 256.69 | 1.4% | -2.1% |
| 23 | 2026-06-05 | 255.35 | 263.24 | 1.6% | -3.0% |
| 24 | 2026-06-12 | 257.63 | 269.57 | 0.9% | -4.4% |
| Four week average | | 253.07 | 260.50 | - | -2.8% |

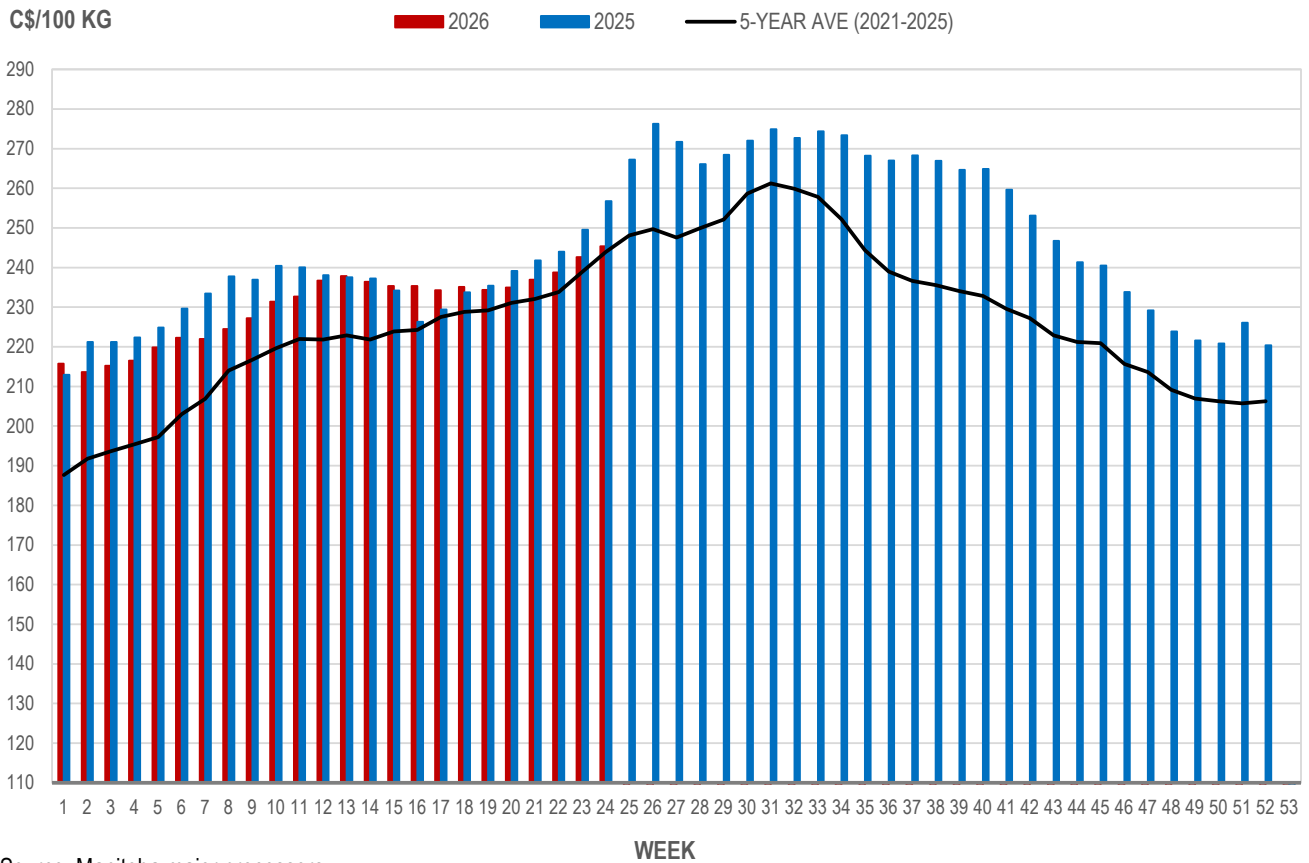
Source: Manitoba major processors.

Index 100, C\$/100 kg

| Week | Week ending date | 2026 | 2025 | Change from Previous Week | Change from Previous Year |
|--------------------------|------------------|---------------|---------------|---------------------------|---------------------------|
| 21 | 2026-05-22 | 236.93 | 241.77 | 0.8% | -2.0% |
| 22 | 2026-05-29 | 238.73 | 244.02 | 0.8% | -2.2% |
| 23 | 2026-06-05 | 242.61 | 249.50 | 1.6% | -2.8% |
| 24 | 2026-06-12 | 245.40 | 256.77 | 1.2% | -4.4% |
| Four week average | | 240.92 | 248.02 | - | -2.8% |

Source: Manitoba major processors.

MANITOBA WEIGHTED AVERAGE INDEX 100 HOG PRICES WEEKLY



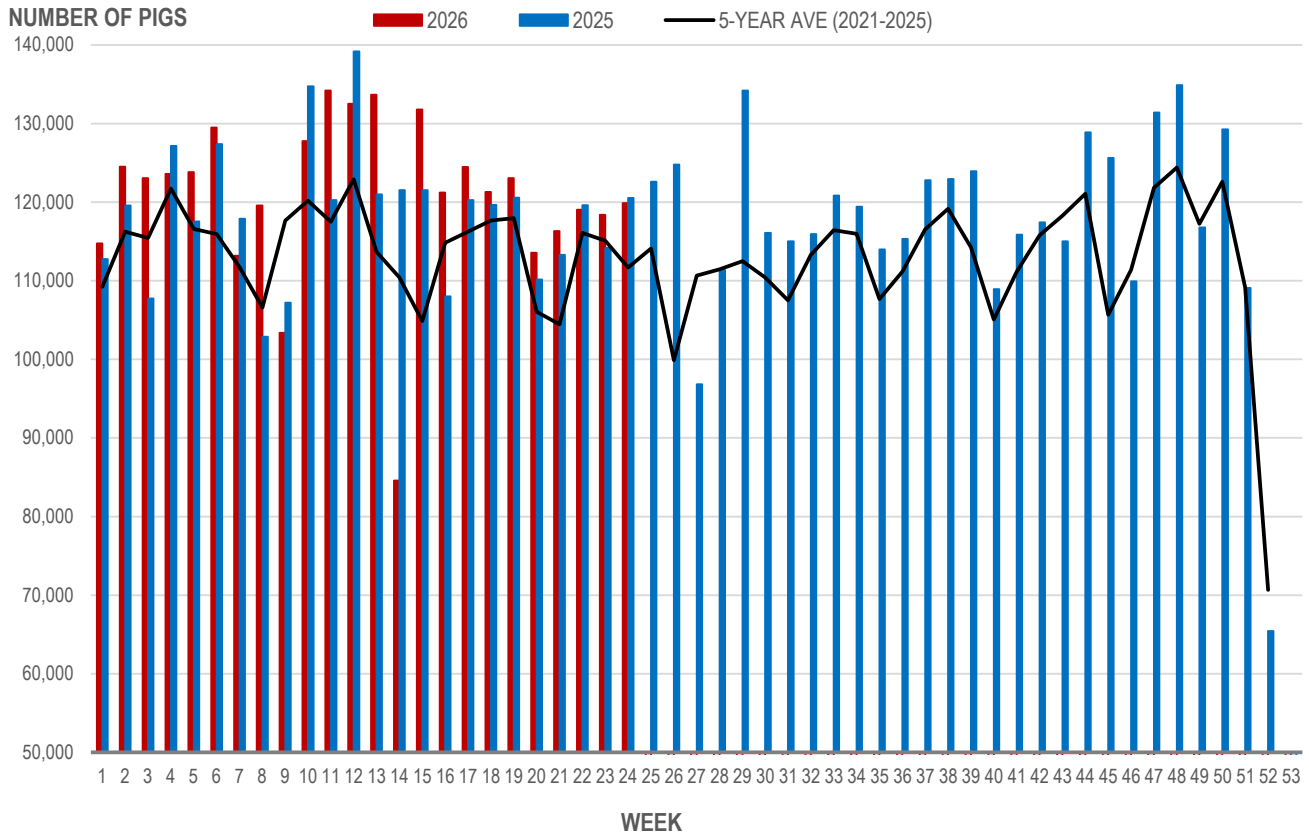
Source: Manitoba major processors

Number of Pigs Processed by Major Processors

| Week | Week ending date | 2026 | 2025 | Change from Previous Week | Change from Previous Year |
|--------------------------|------------------|----------------|----------------|---------------------------|---------------------------|
| 21 | 2026-05-22 | 116,321 | 113,291 | 2.4% | 2.7% |
| 22 | 2026-05-29 | 119,036 | 119,622 | 2.3% | -0.5% |
| 23 | 2026-06-05 | 118,375 | 114,181 | -0.6% | 3.7% |
| 24 | 2026-06-12 | 119,866 | 120,548 | 1.3% | -0.6% |
| Four week average | | 118,400 | 116,911 | - | 1.3% |

Source: Manitoba major processors.

NUMBER OF PIGS PROCESSED BY MAJOR PROCESSORS WEEKLY



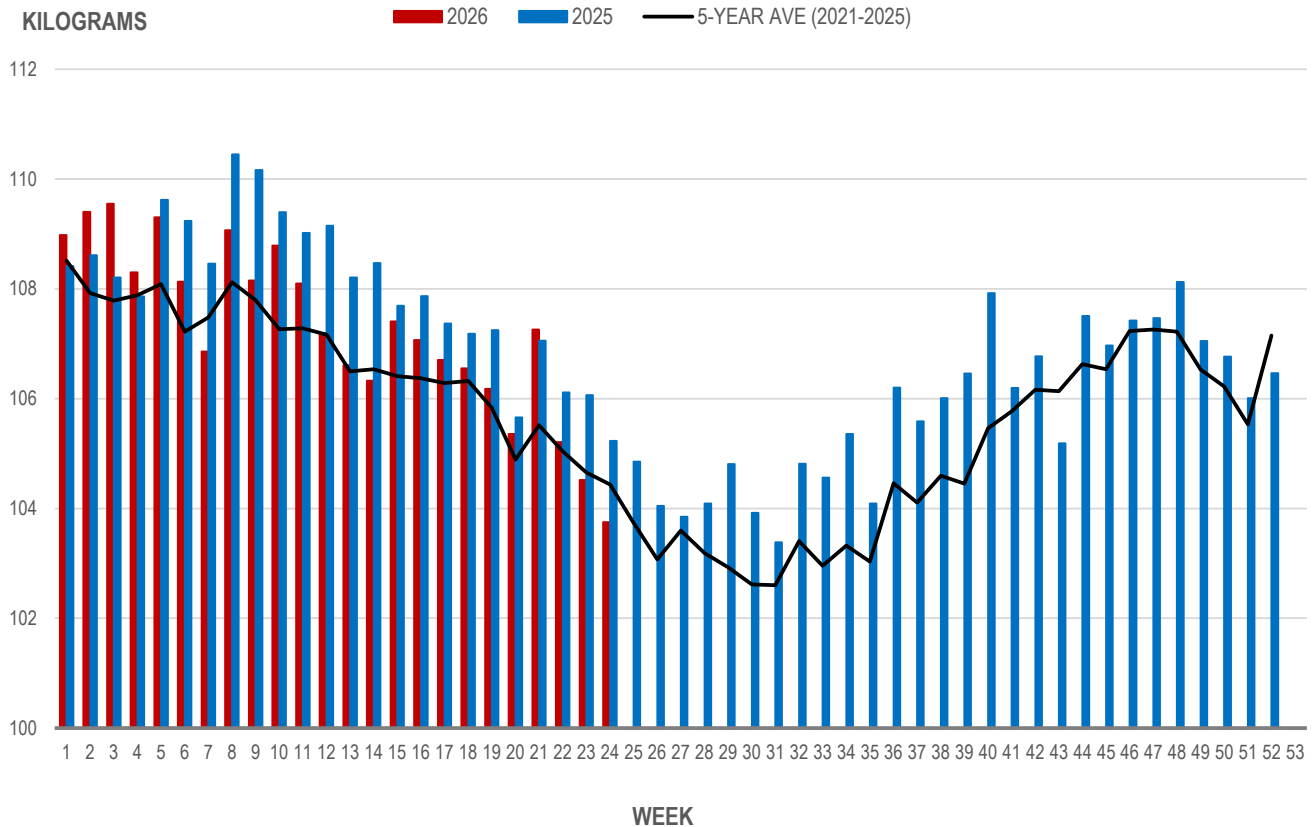
Source: Manitoba major processors

Average Weight of Hogs Processed by Major Processors, Kg

| Week | Week ending date | 2026 | 2025 | Change from Previous Week | Change from Previous Year |
|--------------------------|------------------|---------------|---------------|---------------------------|---------------------------|
| 21 | 2026-05-22 | 107.26 | 107.06 | 1.8% | 0.2% |
| 22 | 2026-05-29 | 105.21 | 106.11 | -1.9% | -0.9% |
| 23 | 2026-06-05 | 104.52 | 106.07 | -0.7% | -1.5% |
| 24 | 2026-06-12 | 103.75 | 105.23 | -0.7% | -1.4% |
| Four week average | | 105.18 | 106.12 | - | -0.9% |

Source: Manitoba major processors.

AVERAGE WEIGHT OF HOGS PROCESSED BY MAJOR PROCESSORS WEEKLY



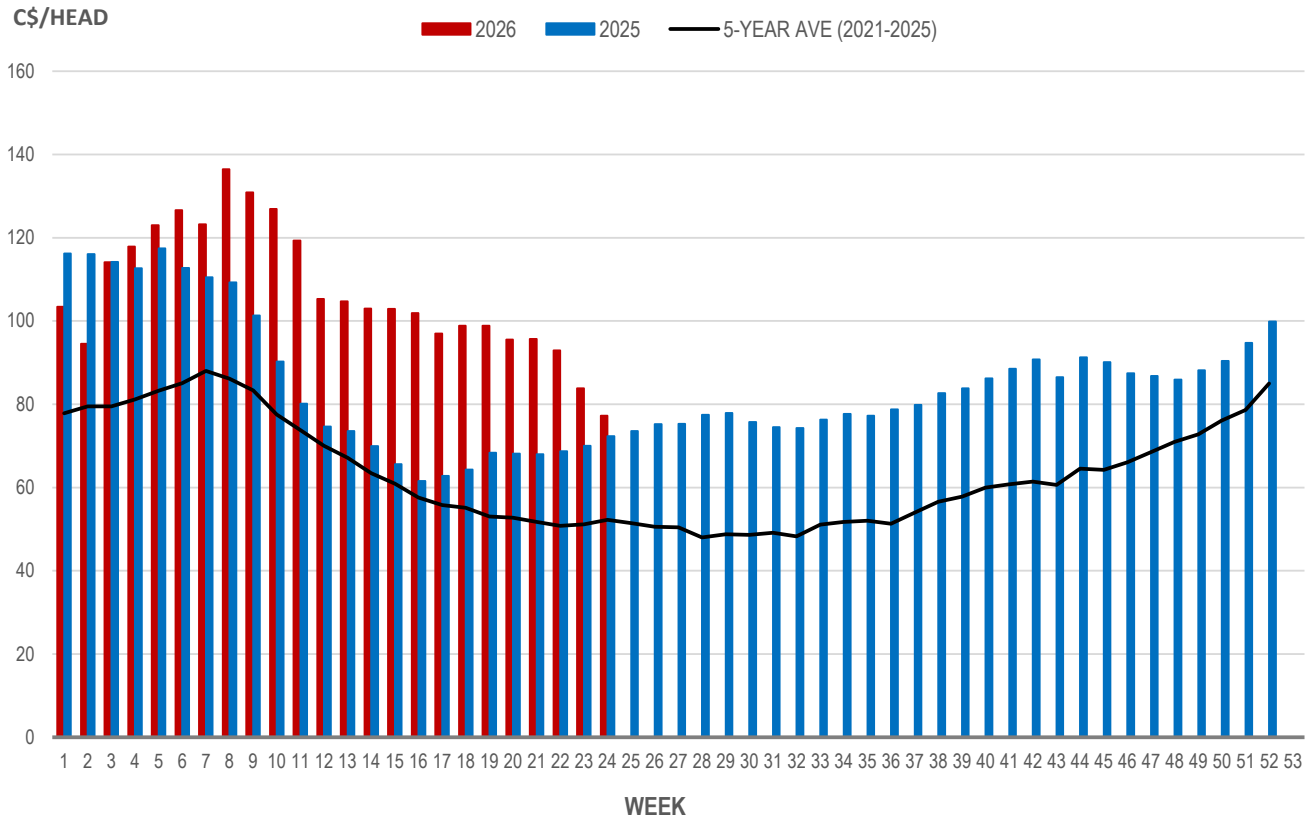
Source: Manitoba major processors

Weaning Pigs (U.S. Total Composite Weighted Average Price per Head)

| | Formula and Cash Low, US\$/Head | Formula and Cash High, US\$/Head | Wtd Avg Price, US\$/Head | Wtd Avg Price, C\$/Head |
|-------------------------|---------------------------------|----------------------------------|--------------------------|-------------------------|
| Early Weaned (10-12 lb) | 43.00 | 77.86 | 55.26 | 77.24 |
| Feeder Pigs (40 lb) | 80.00 | 110.00 | 90.09 | 125.92 |

Source: USDA, AMS

EARLY WEANED PIGS (U.S. TOTAL COMPOSITE WEIGHTED AVERAGE PRICE PER HEAD) WEEKLY



Source: USDA, AMS

Contact us

- www.manitoba.ca/agriculture/markets-and-statistics/
- Email us at industryintelligence@gov.mb.ca
- Follow us on X @MBGovAg

