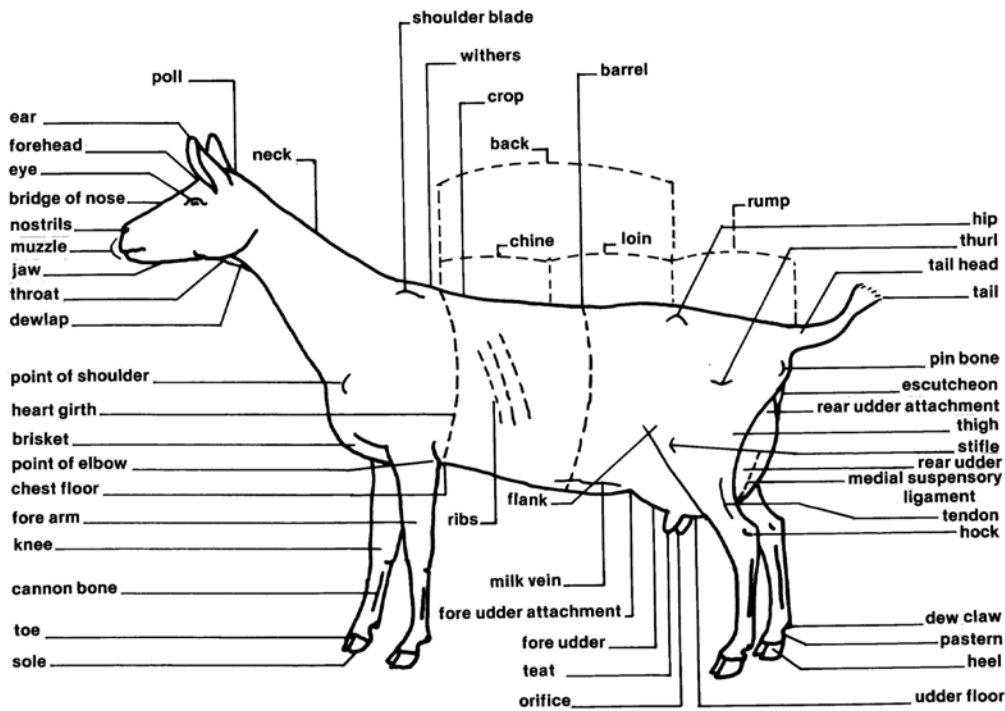




CANADA  
4-H Manitoba

# Judging Goats

## Parts of the Goat

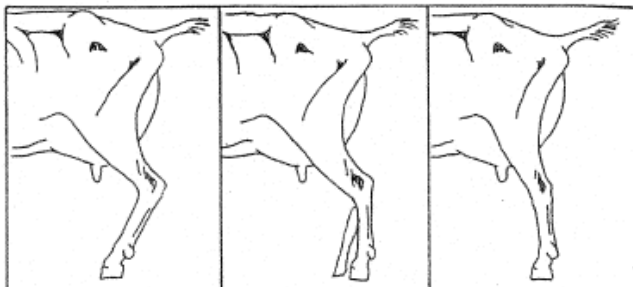


## Judge's Eye

The ideal slope of rump should resemble the middle diagram. The goat on the left has an extremely steep slope of rump, while the goat on the right has a level rump; both undesirable characteristics.



The set of the rear legs should resemble the middle diagram. The goat on the left has extremely sickled legs, while the goat on the right has extremely posty rear legs; both undesirable sets of legs.



## Dairy Goat Scorecard

	<b>Perfect Score</b>	
	<b>Doe</b>	<b>Buck</b>
<b>General Appearance</b> .....	35	54
<ul style="list-style-type: none"> <li>• Attractive individually indicating femininity, vigour, strength and stretch with a harmonious blending and correlation of parts, impressive style and attractive carriage; graceful and powerful walk.</li> </ul>		
	<b>Doe</b>	<b>Buck</b>
<ul style="list-style-type: none"> <li>• Style (includes shoulders) .....</li> <li>• Breed character and head .....</li> <li>• Topline .....</li> <li>• Rump .....</li> <li>• Feet and Legs .....</li> </ul>	5 5 5 8 12	8 8 8 10 20
<b>Body Capacity</b> .....	15	23
<ul style="list-style-type: none"> <li>• Relatively large in proportion to the size of the animal, providing ample digestive capacity, strength and vigour; width throughout, starting at head               <ul style="list-style-type: none"> <li>• Wide, deep barrel and heart girth</li> <li>• Wide in head, full in crops</li> <li>• Wide through back and loin</li> <li>• Wide chest floor between front legs</li> <li>• Full at elbow</li> </ul> </li> </ul>		
<b>Dairy Character</b> .....	15	23
<ul style="list-style-type: none"> <li>• Animation, angularity, general openness and freedom from excess tissue, giving due regard to stage of lactation for does.               <ul style="list-style-type: none"> <li>• Long, lean neck blending into shoulders</li> <li>• Well-defined withers</li> <li>• Flat, long, well-sprung ribs</li> <li>• Fine-textured, loose, supple skin; fine hair</li> <li>• Lean and angular lines</li> </ul> </li> </ul>		
<b>Mammary System (Does only)</b> .....	35	0
<ul style="list-style-type: none"> <li>• A capacious, strongly attached, well-balanced udder of good quality, Indicating heavy production and a long period of usefulness.               <ul style="list-style-type: none"> <li>• Medial suspensory ligament, shape, texture ... 15</li> <li>• Fore udder .....</li> <li>• Rear udder .....</li> <li>• Teats .....</li> </ul> </li> </ul>	8 8 4	
<b>Total</b> .....	100	100

# Market Kid Scorecard

	<b>Perfect Score</b>
<b>General Appearance</b> .....	30
• Quality and condition .....	15
• Well muscled, with smooth firm flesh	
• Clean, strong bone	
• Smooth, glossy hair and loose, supple skin	
• Size and development .....	15
• Size appropriate to age; high growth preferred	
<b>Forequarters</b> .....	25
• Shoulders .....	10
• Well muscled with smooth, firm flesh	
• Withers barely defined	
• Brisket .....	7
• Broad, deep and muscular	
• Forelegs .....	8
• Heavily muscled, round, clean bone	
• Strong, straight legs with strong flexible pasterns	
<b>Hindquarters</b> .....	25
• Rump .....	10
• Long and broad with smooth, firm flesh	
• Twist and Thighs .....	10
• Low, wide, well fleshed twist	
• Deep, wide, firm and muscular thighs	
• Hind legs .....	5
• Clean and strong bone	
<b>Body</b> .....	15
• Capacity .....	2
• Ample room for digestive system	
• Heart girth .....	2
• Large girth with wide chest floor	
• Fullness at point of elbow	
• Barrel .....	4
• Deep and broad; well supported	
• Loin .....	7
• Broad and strong with full, deep flanks	
<b>Head and Neck</b> .....	5
• Head .....	2
• Clear, bright eyes; large, open nostrils	
• Neck .....	3
• Medium length, strong and thick	
• Blending smoothly into shoulder and brisket	
<b>Total</b> .....	100



CANADA  
4-H Manitoba

Sections of the Judging Fact Sheets were adapted from the Alberta 4-H Judging Project Guide with the permission of the Alberta 4-H Council and the 4-H Ontario Judging Toolkit with the permission of the Ontario 4-H Council.

## Manitoba 4-H Contact Information

1129 Queens Avenue Brandon, MB R7A 1L9

Ph: (204) 726-6613 Fax: (204) 726-6260

[4h@gov.mb.ca](mailto:4h@gov.mb.ca)

[www.manitoba.ca/agriculture/4-h](http://www.manitoba.ca/agriculture/4-h)

[www.4h.mb.ca](http://www.4h.mb.ca)