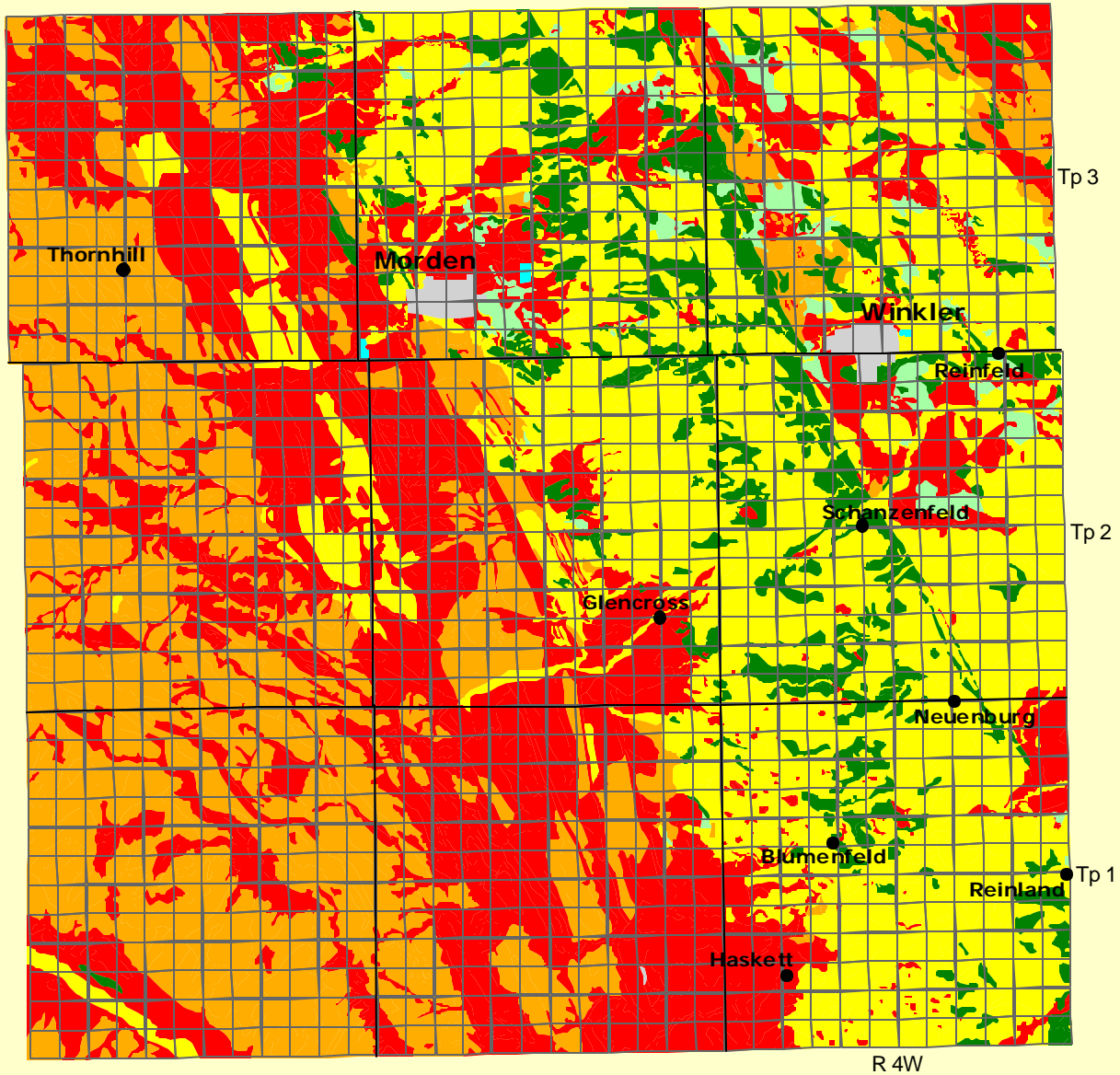


Rural Municipality of Stanley

Soil Suitability for Irrigated Potato Production




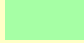





5 0 5 10 Kilometers

Universal Transverse Mercator (NAD27) Projection
Derived from Detail Soil Information (1:20 000)

Agricultural Resources Section
Soils and Crops Branch
Manitoba Agriculture and Food

subject to revision

Soil Suitability Classes for Irrigated Potato Production

		Area (ha)	% of RM
	Class 1	6246	7.2
	Class 2	1351	1.5
	Class 3	28339	32.4
	Class 4	21374	24.4
	Class 5	29765	34.0
	water		
	unclassified		