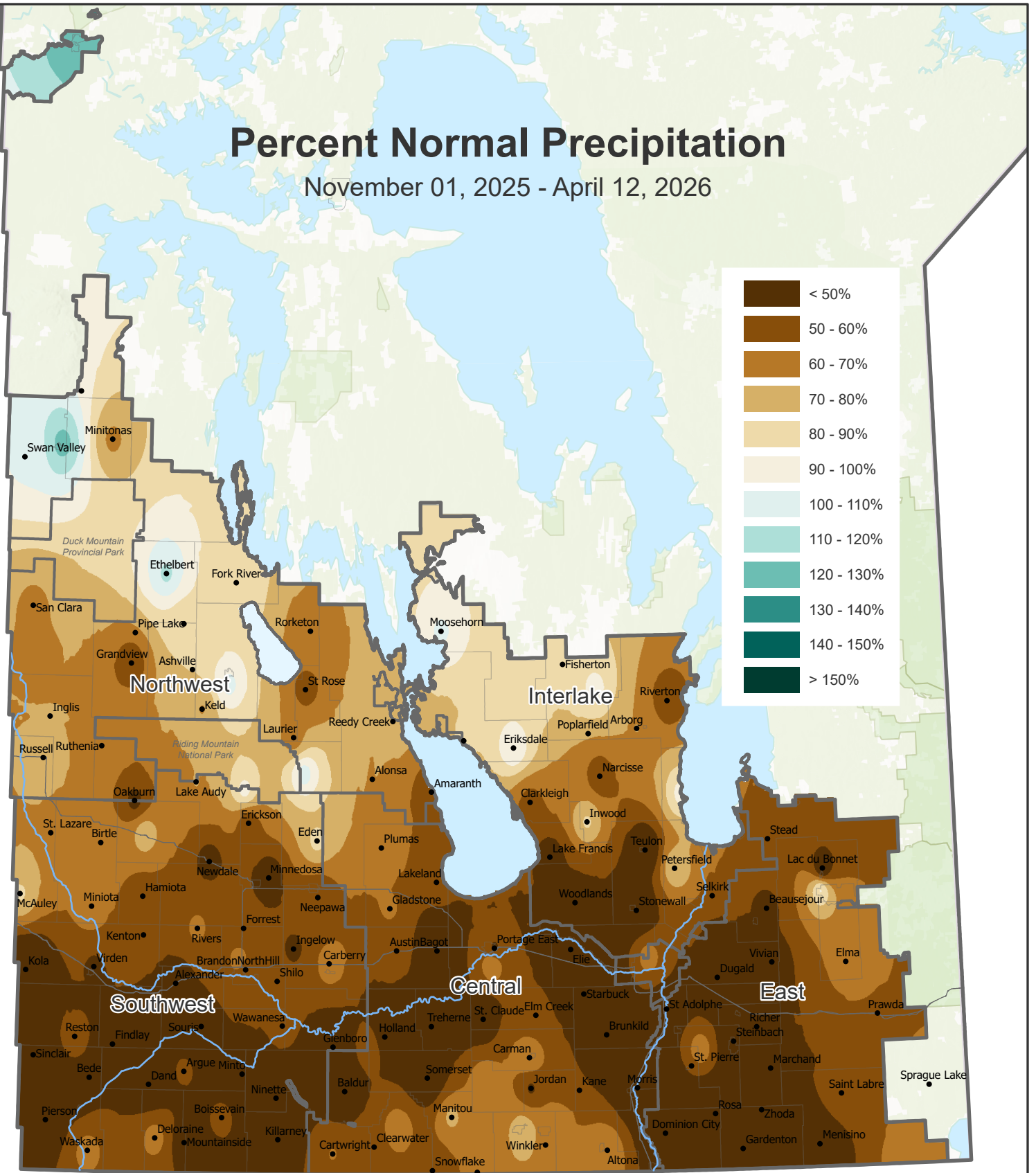
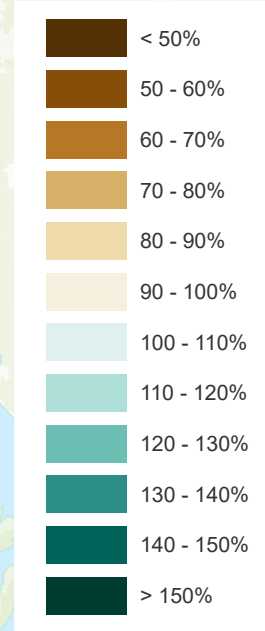


# Percent Normal Precipitation

November 01, 2025 - April 12, 2026



Prepared by Manitoba Agriculture, Ag-Weather Program

Map provides a regional estimation based on weather observations from the Ag-Weather Program and Environment and Climate Change Canada weather stations and should be supplemented by site-specific considerations. Local conditions may vary.

The accuracy of this map may vary due to data availability and potential data errors.

For more information, contact your local Manitoba Agriculture office.

