



COVID-19 VACCINATION IN MANITOBA

TASK FORCE UPDATE

January 20, 2021

IMMUNIZATION IN MANITOBA



22,988

doses of measles/mumps/rubella/ varicella (MMR) vaccine administered between Oct 1, 2019 and May 31, 2020



381,365

doses of influenza vaccine (annual campaign) administered between Oct 1, 2019 and May 31, 2020



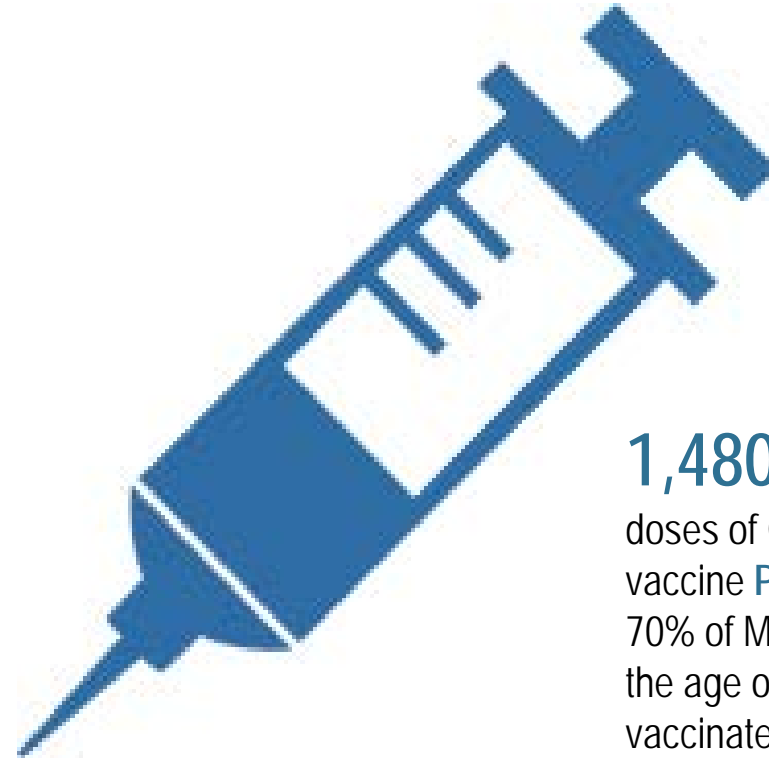
695,333

doses of influenza vaccines - including the pandemic H1N1 vaccine - administered between Oct. 1, 2009 and May 31, 2010



1,480,000

doses of COVID-19 vaccine **PLANNED**, if 70% of Manitobans over the age of 18 are vaccinated by the end of 2021



MANITOBA IMMUNIZATION PLANS



The Manitoba government, is following a '*full immunization fast*' policy. To ensure that our healthcare system and our vulnerable populations have the maximum protection possible.

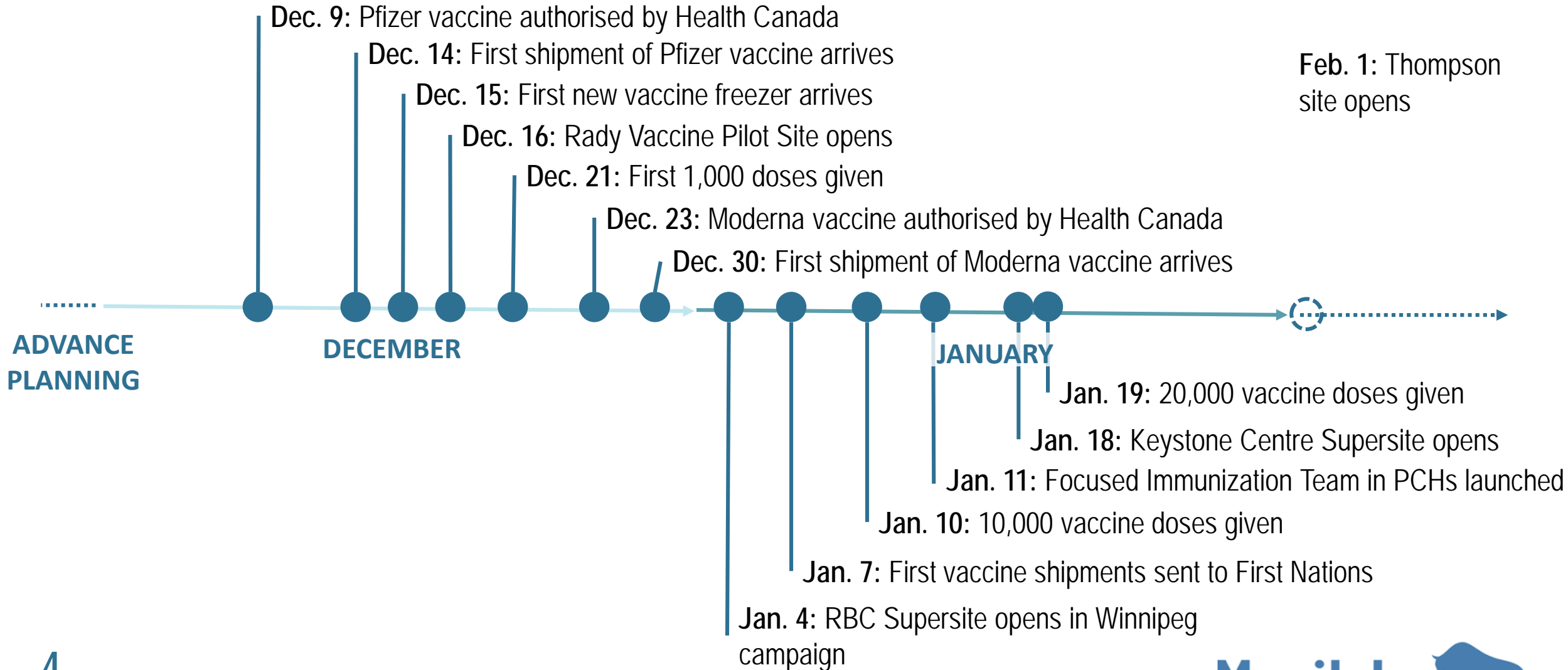
EXPERT ADVICE

- Public Health Agency of Canada, National Advisory Committee on Immunization, manufacturers – following guidance to provide first and second doses on the clinically-advised schedule.
- National Advisory Committee on Immunization - following advice on priority populations

VACCINE DELIVERY MODELS

- Preparing for large-scale deliveries once vaccine scarcity is addressed

COVID-19 VACCINATION TIMELINE



PARTNERSHIP WITH FIRST NATIONS



The Manitoba government, First Nation health experts and the federal government have formed an advisory and planning group to ensure that allocation, distribution and prioritization of vaccine for First Nations is informed by First Nations data and led by their chosen representatives.

First Nations are at significant risk from COVID-19 and Manitoba's collaborative approach has been a critical component of our effort to rollout vaccines where they are needed most.

Collaborative Tables:

- Tripartite First Nations Planning & Integration Table
- First Nations Logistics Table (subset of Tripartite Table)
- Indigenous Vaccination Communications Working Group

Achievements

- Collaborative planning
- Offered joint training, access to best practices, communications partnerships
- Deployment of doses, planning for future deployments

MANITOBA'S VACCINATION CONTEXT

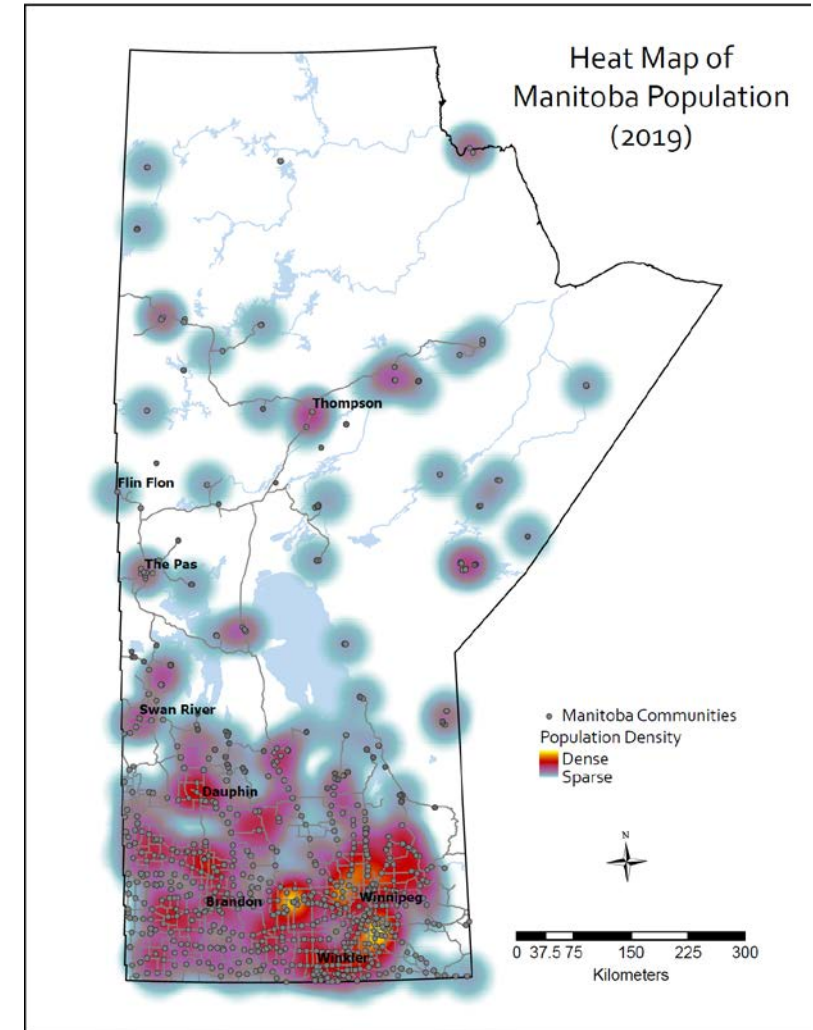


GEOGRAPHY

More than 70 per cent of Manitobans reside in urban centres in the south, while many smaller communities, including First Nation reserves, are spread out widely in the north. This is a logistical challenge for vaccines that require very delicate handling and specialized equipment.

CONGREGATE LIVING

In urban centres, many of those residing in congregate living facilities, such as personal care homes and communal living facilities, and those in multi-generational homes at the lower socio-economic strata, are particularly vulnerable to COVID-19.





COVID-19 VACCINATION IN MANITOBA OPERATIONAL PLANNING AND CAPACITY

KEY PRINCIPLES

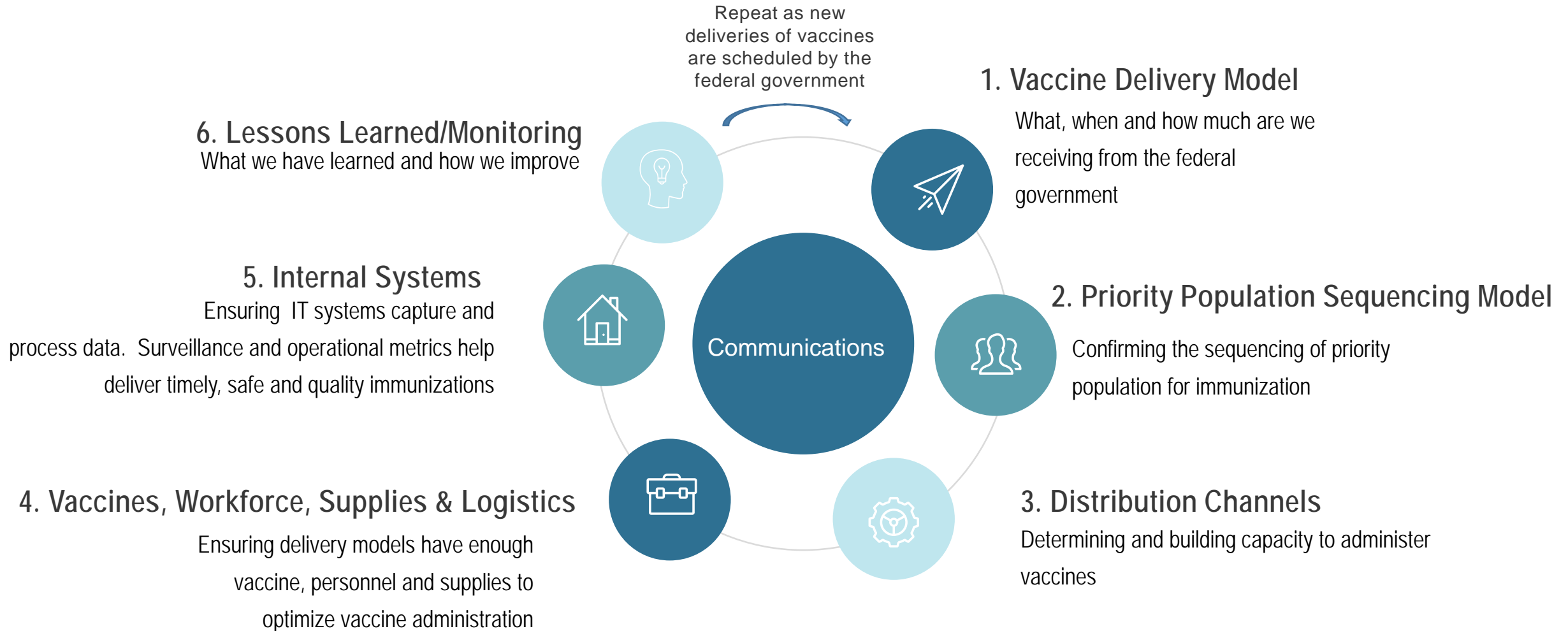
Guiding direction for all vaccination operations



Led by medical professionals, responsive and ready for demand, in partnership with First Nations

- **Clinically led:** Manitoba's efforts are guided by clinical advice on risk-based eligibility, immunization protocols, dosage, treatment of the vaccine and the safety of Manitobans.
- **Ready for demand:** Manitoba is preparing for changing circumstances, including either fast-tracked or delayed vaccine delivery.
- **Responsive:** Daily reporting and review of workforce and vaccination data will inform decisions and adjustments
- **Partner with First Nations:** First Nations leadership are given the respect and autonomy to lead within their communities, with Manitoba's support where requested.

AGILE DELIVERY AMONG UNCERTAINTY



DELIVERY MODEL UPDATES

Manitoba's geography and demographics demands a variety of unique vaccination approaches to maximize productivity and resources.



Six models of vaccination deployed

1. **Pilot Site:** The first model, a pilot site at Rady HSC provided early experience with the vaccine and our effort.
2. **Supersites:** In larger, urban centres, supersites allow for rapid and large-scale vaccination, for increased speed, greater efficiency and reduced risk of waste.
3. **Focused Immunization Teams:** FITs visit facilities like personal care homes and other congregate living facilities to deliver vaccines where people live.
4. **First Nations:** Manitoba allocates doses to First Nations partners to distribute and deliver in their communities.
5. **Immunization Hubs & Pop-up Sites:** These sites will reach smaller population centres in rural and Northern areas across the province.
6. **Distributed Delivery:** As vaccines become more available and distribution is stable, medical offices and pharmacies can begin to offer vaccine across the province.

VACCINE DELIVERY MODEL UPDATES



PILOT SITE

The first model, a pilot site at Rady HSC, was designed to test the systems and procedures and to guide the further development of a playbook for future sites.

- Administered the first 3,443 doses available in Manitoba, providing an opportunity to better understand and improve vaccine operations
- Eligibility criteria included health-care workers whose work involves direct contact with patients and who meet at least one of the following criteria:
 - work in critical care units;
 - work in long-term care facilities, born on or before Dec. 31, 1972 (changed from 1969);
 - work in acute care facilities, born on or before Dec. 31, 1972 (changed from 1969); or
 - assigned to a COVID-19 immunization clinic or testing site.

3,443
TOTAL DOSES
ADMINISTERED

382
AVG. DAILY DOSES

18
STAFF (FTE)



WINNIPEG SUPERSITE

In larger, urban centres, supersites allow for rapid and large-scale vaccination for increased speed and efficiency.

- Launched January 4, 2021 at the RBC Convention Centre
- Serves primarily the Winnipeg region, which includes more than 610,000 Manitobans over the age of 18 who will be eventually eligible to receive the vaccine
- Maximum capacity at current design: 2,077 doses/day
- Province-wide supersite criteria applies and is adjusted based on vaccine supply and appointment demand.

14,022
TOTAL DOSES
ADMINISTERED

935
AVG. DAILY DOSES

68
EST. DAILY STAFF (FTE)

VACCINE DELIVERY MODEL UPDATES



BRANDON SUPERSITE

In larger, urban centres, supersites allow for rapid and large-scale vaccination for increased speed and efficiency.

- Launched January 18, 2021 at the Keystone Centre
- Serves primarily the Prairie Mountain Health region which includes more than 127,000 Manitobans over the age of 18 who would be eventually eligible to receive the vaccine
- Open to all clients who meet the current supersite eligibility criteria
- Maximum capacity at current design: 1,407 doses / day

563
TOTAL DOSES
ADMINISTERED

563
AVG. DAILY DOSES

41
EST. DAILY STAFF (FTE)



THOMPSON SITE

In larger, urban centres, supersites allow for rapid and large-scale vaccination for increased speed and efficiency.

- Launching on February 1, 2021 at Thompson Regional Community Centre
- Serves primarily the northern region which includes over 46,000 Manitobans over the age of 18 who would be eventually eligible to receive the vaccine
- Open to all clients who meet the current supersite eligibility criteria
- Maximum capacity at current design: 694 doses / day

--
TOTAL DOSES
ADMINISTERED

--
AVG. DAILY DOSES

--
EST. DAILY STAFF (FTE)

SUPERSITE ELIGIBILITY CRITERIA

Criteria current as of
January 20, 2021

Health-care workers whose work involves direct contact with patients and meet at least one of the following criteria:

- work in critical care units (intensive care units only, no age restrictions);
- work in long-term care facilities, including personal care homes (no age restrictions)
- work in acute care facilities, born on or before Dec. 31, 1975;
- assigned to a COVID-19 immunization clinic or designated COVID-19 testing site (no age restrictions and may include some individuals who do not have direct contact with patients, based on their role);
- work in a laboratory handling COVID-19 specimens (no age restrictions and may include some individuals who do not have direct contact with patients, based on their role);
- work on a designated COVID-19 hospital ward (no age restrictions);
- work in provincial or federal correctional facilities (no age restrictions);
- emergency response services (ERS) and specialty patient transportation workers registered with their applicable college or association in Manitoba, born on or before December 31, 1975.
- home care workers born on or before Dec. 31, 1975 who are employed by a regional health authority, employed by a RHA contracted service providers or employed by a self- and family-managed care program client;
- work in hospital emergency and urgent care departments (no age restrictions); or
- work in congregate group care settings who provide direct care to individuals in the Community Living disABILITY Services, Child and Family Services, Homeless Shelters and Family Violence Shelters.

VACCINE DELIVERY MODEL UPDATES



FOCUSED IMMUNIZATION TEAMS (FIT)

FIT's visit facilities like PCH and other congregate living facilities to deliver vaccines where people live.

- Launched January 11, 2021 and are currently advancing PCH immunizations.
- Scalable by design, depending on the size of the facility
- Can be deployed across Manitoba as needed
- Personal care homes and other congregate living facilities can also assign staff to support immunizations at their facilities to support the FIT
- Does not follow age-based eligibility criteria
- Each region can scale up the number of teams based on vaccine availability, dose # will depend on team size
- Due to the recent announcement by Pfizer, the VITF is currently reviewing vaccine supply and will determine the next facilities FITs will be attending

1,067
TOTAL DOSES
ADMINISTERED

133
AVG. DAILY DOSES/TEAM

2-8
EST. DAILY STAFF (FTE)



IMMUNIZATION HUBS & POP- UP SITES

These sites will reach smaller population centres in rural and Northern areas across the province.

Immunization Hubs

- Hybrid of a supersite and a pop-up clinic
- Designed to limit travel time to supersites
- Scalable based on population served

Pop-up Sites

- Serve remote and Northern communities
- Designed to stay in a community until population is immunized
- Does not follow age-based eligibility criteria
- Scalable based on population served

- -
TOTAL DOSES
ADMINISTERED

- -
AVG. DAILY DOSES

- -
EST. DAILY STAFF (FTE)



DISTRIBUTED CHANNELS

As vaccines are more widely available and distribution is stable, medical offices and pharmacies can offer immunizations

- Broadly-distributed network of medical professionals and facilities, e.g., doctors' offices and pharmacies
- Experienced with public vaccination programs, e.g. flu campaigns
- Aligns immunization capacity with availability of approved vaccines
- Creates opportunities for patients to be vaccinated by their existing health care providers

- -
TOTAL DOSES
ADMINISTERED

- -
AVG. DAILY DOSES

- -
EST. DAILY STAFF (FTE)

WORKFORCE RECRUITMENT



DAILY OPERATIONAL SCHEDULE

January 20, 2021

RBC CONVENTION CENTRE

710 Doses



48

STAFF (FTE)
21 Immunizers

KEYSTONE CENTRE

137 Doses



11

STAFF (FTE)
4 Immunizers

FIT TEAM - Winnipeg

314 Doses



12

STAFF (FTE)
12 Immunizers

CURRENT WORKFORCE



1783

STAFF (FTE)
As of Jan 20

↑117
this week

- 859 immunizers
- 8 clinic managers
- 348 clinical leads
- 344 navigators
- 224 observers

19

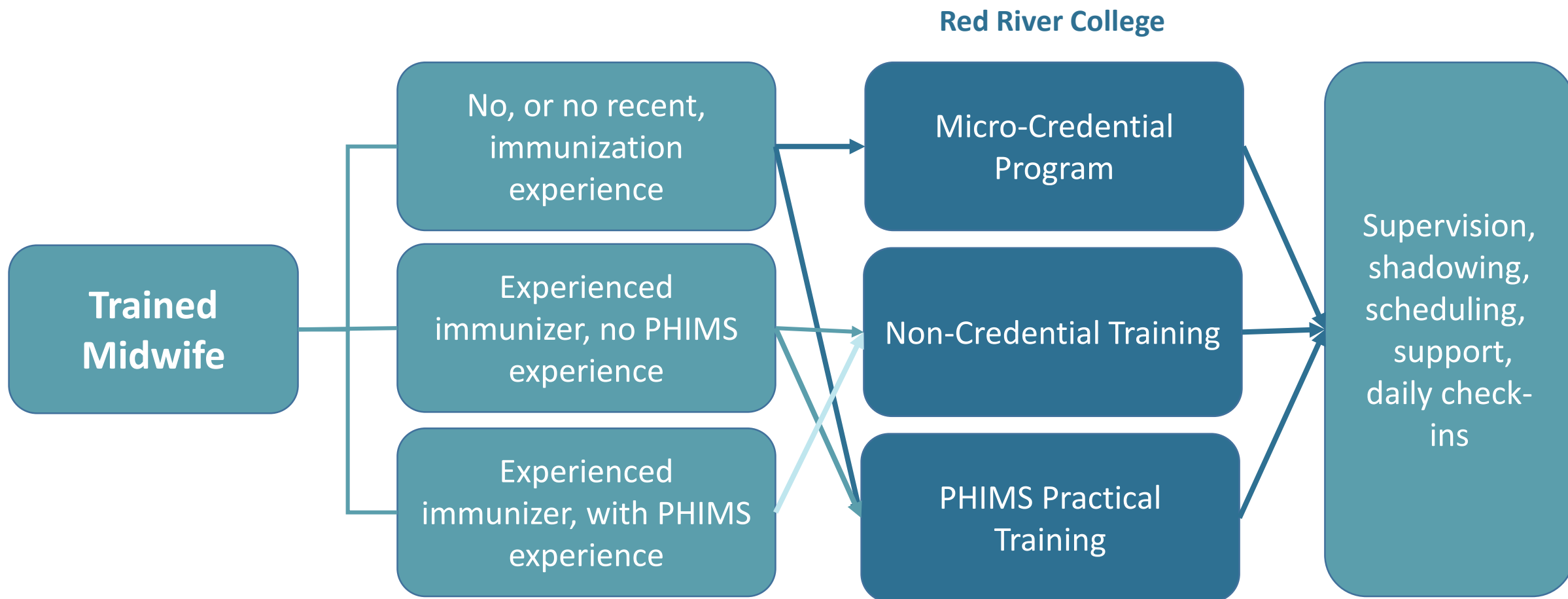
Training for an Immunizer



The training and onboarding process for immunizers is dependent on a variety of factors:

- Applicants are first categorized into four backgrounds, with different needs: current workforce, retired, student, foreign-trained
- Within those categories, there are also 18 professions with varying immunization experience ranging from a clinical assistant to paramedic, respiratory therapist to veterinarian technician.
- Based on these factors, there are three forms of training that may be required depending on level of experience:
 - no or no recent immunization experience,
 - experienced immunizer with no PHIMS experience, or
 - experienced immunizer with PHIMS experience.

IMMUNIZER TRAINING: MIDWIFE EXAMPLE





COVID-19 VACCINATION IN MANITOBA DOSES AND INVENTORY

VACCINATION DASHBOARD

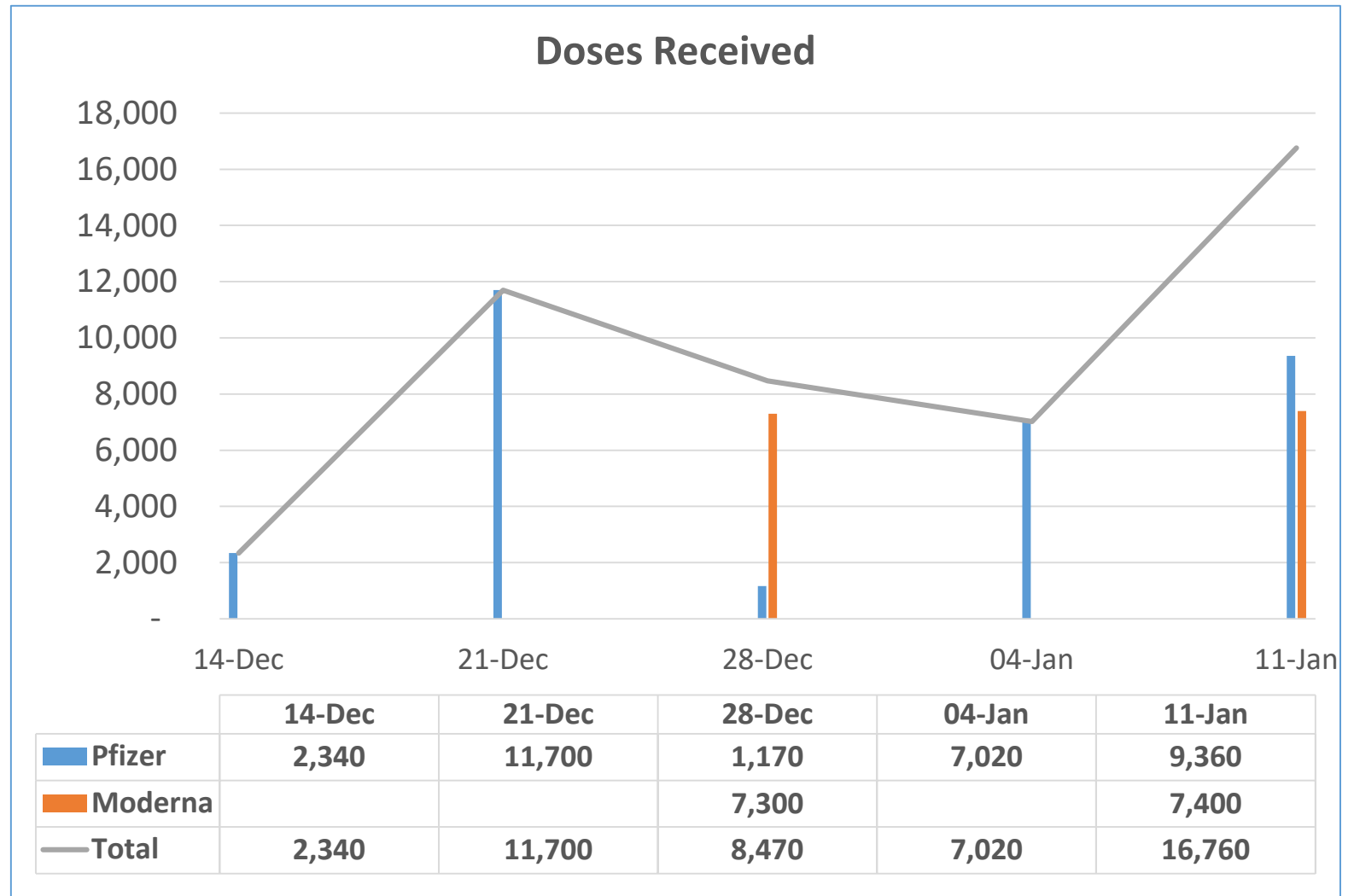


DataMB.ca and Manitoba.ca/Vaccine now contains daily updates on doses received and administered, as well as demographics and regional breakdown.

DOSES RECEIVED

Manitoba has received 46,290 doses of COVID-19 vaccine.

This includes 31,590 doses of Pfizer and 14,700 doses of Moderna.



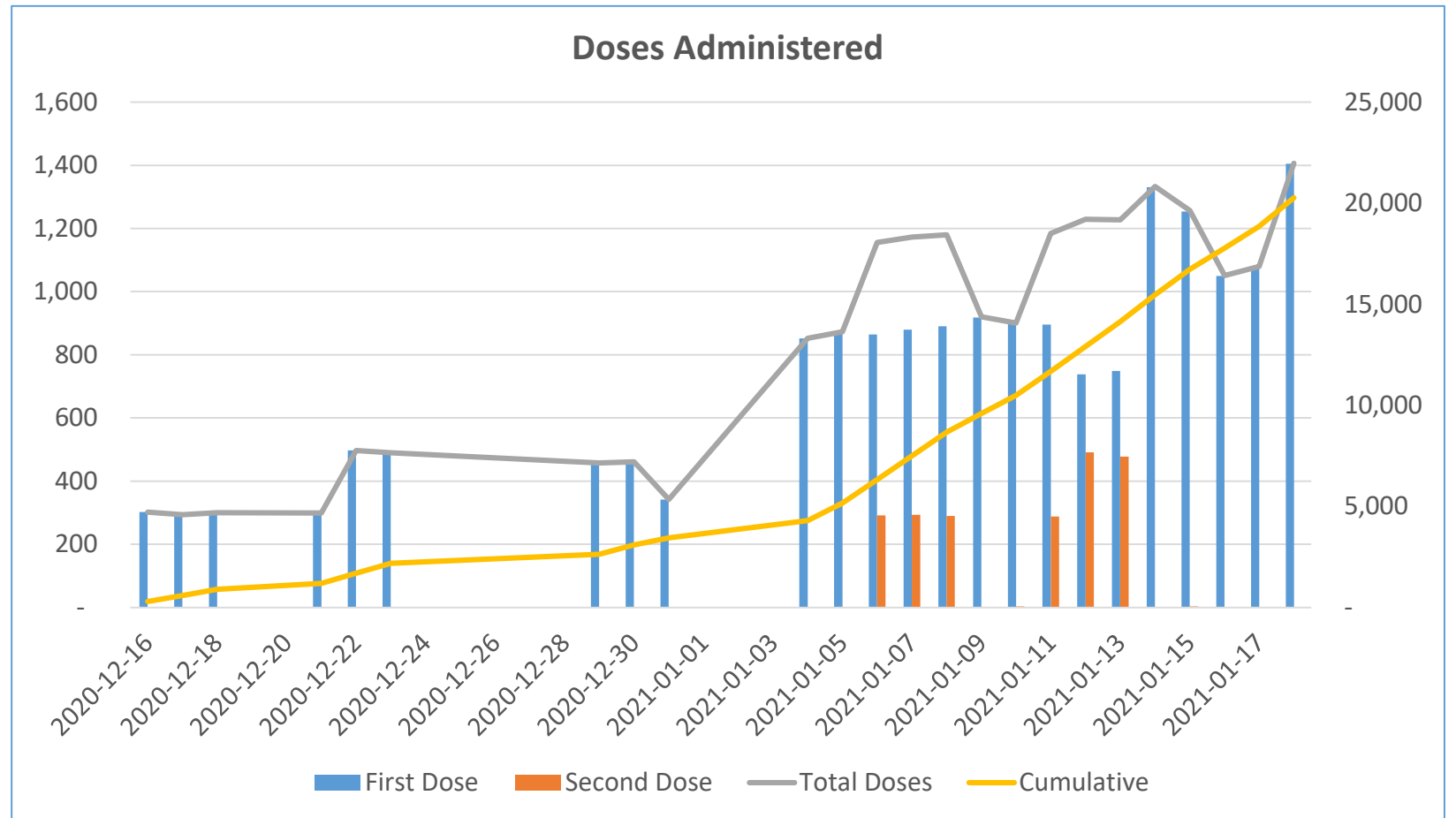
Pfizer doses calculated as 6 doses per vial

Data as of January 18, 2021

DOSES ADMINISTERED

Total doses administered as of January 18: 20,265.

This includes 18,120 first doses and 2,145 second doses.

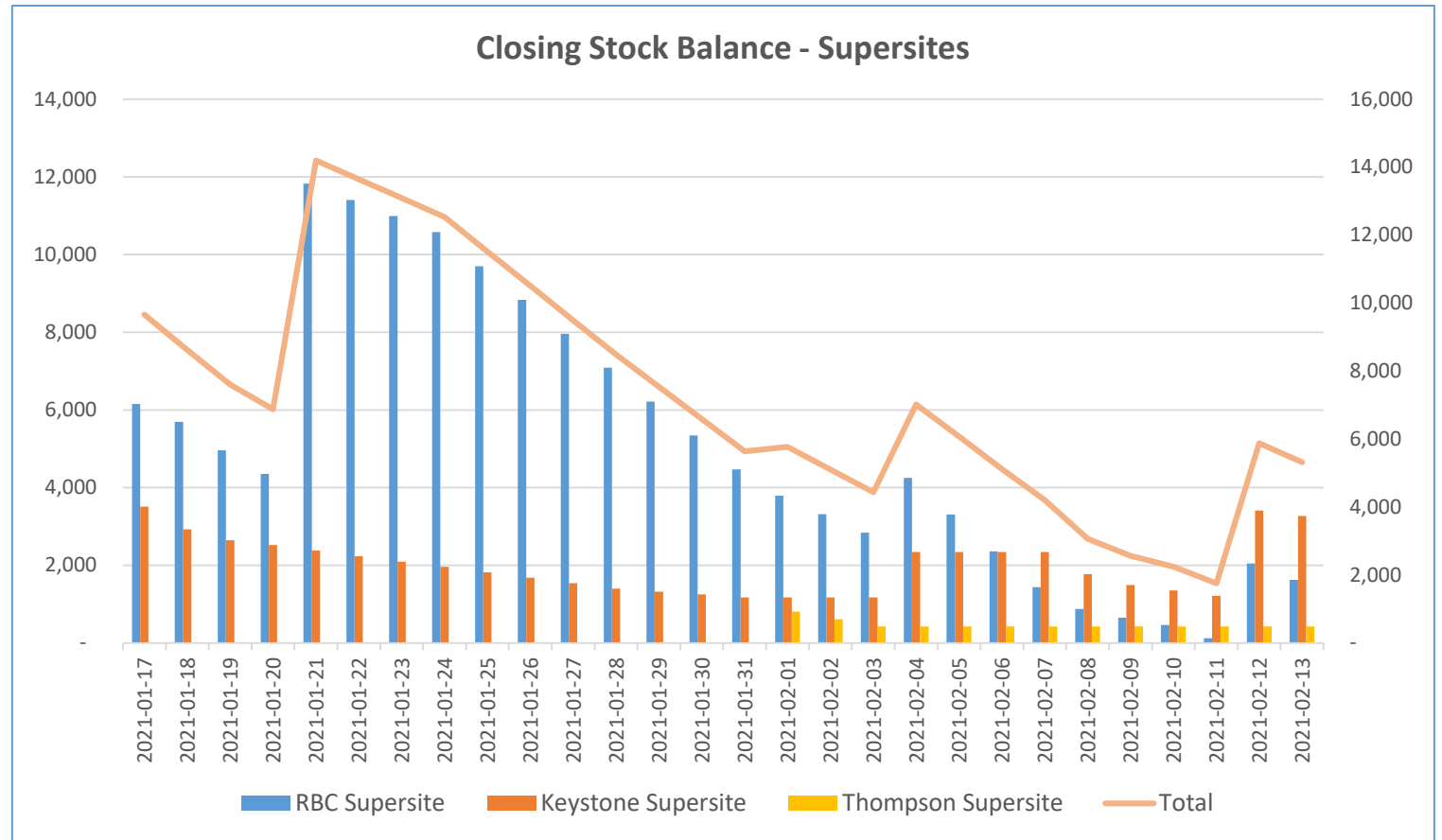


Actuals, as of January 18, 2020

PFIZER DOSE INVENTORY

Projected Inventory of Pfizer for Next 30 Days

If Manitoba receives no more Pfizer doses from the federal government, Manitoba will run out of Pfizer vaccine by Feb. 7, according to projections.



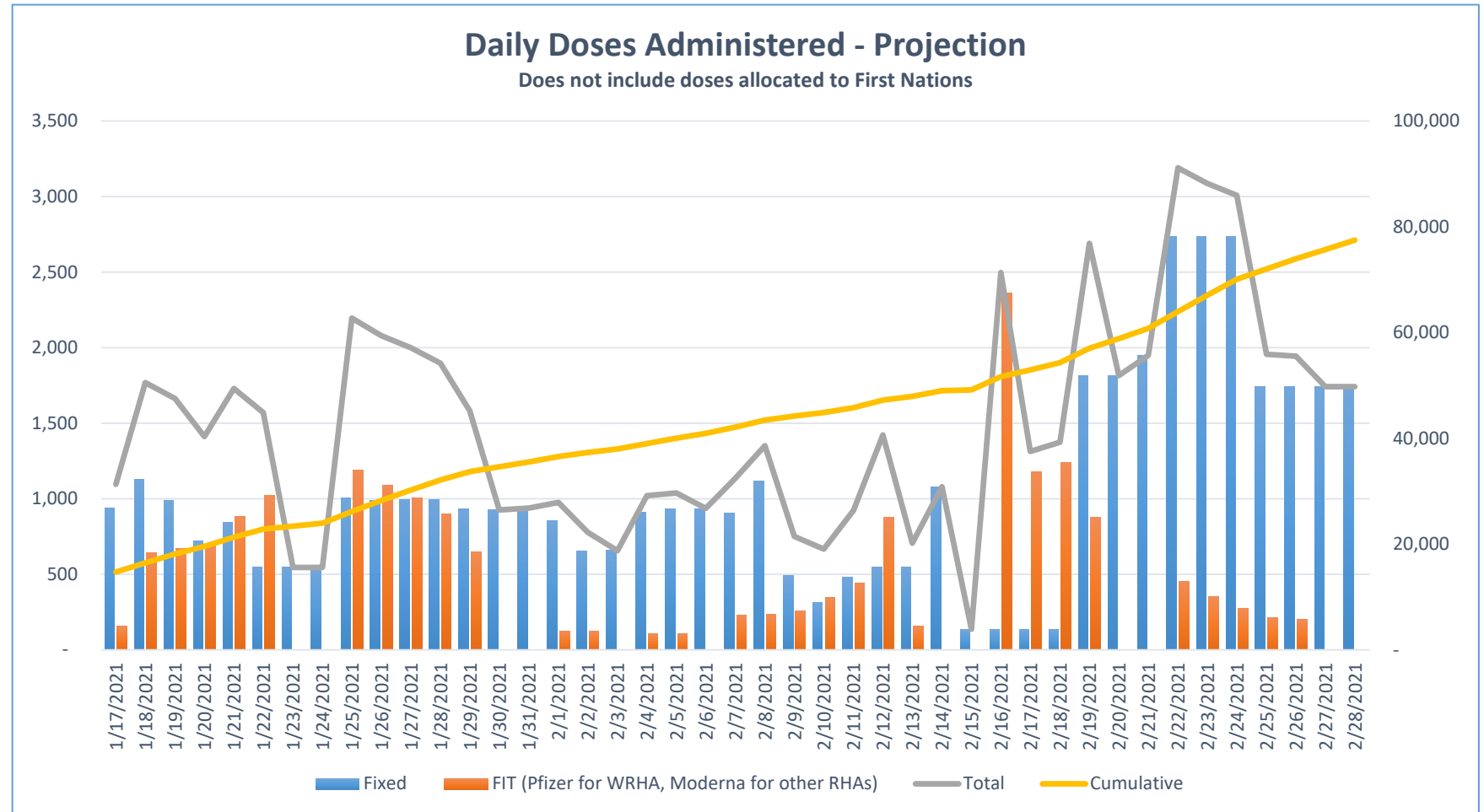
Projections as of January 18, 2020. Each rise in doses represents a scheduled delivery.

NOTE: Manitoba follows the guidance of the National Advisory Committee on Immunization (NACI) and vaccine manufacturers to provide first and second doses on the clinically-advised schedule. Based on the information Manitoba has today, everyone who has received a first dose will receive a second dose.

DOSE ADMINISTRATION PROJECTION



Based on current supply projections, we will average 1,276 injections per day in January, with a peak day of 2,194 doses. In February, we estimate an average of 1,496 injections per day.

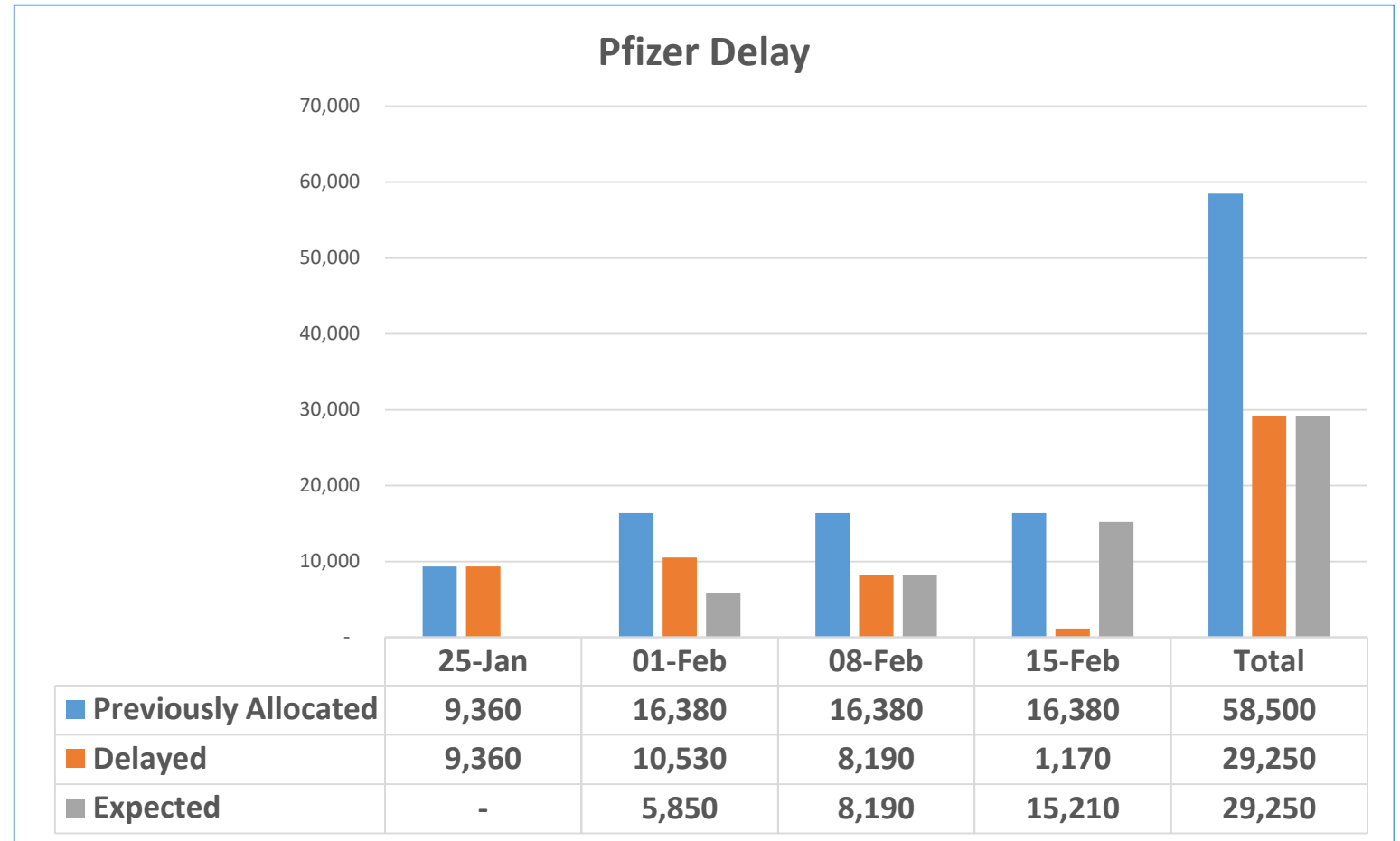


Projected as of January 19 and reflects supply reductions announced by Pfizer on January 15 and 19

PFIZER DELAY – WHAT THIS MEANS FOR MANITOBA



- Pfizer's delay has reduced the number of doses expected by Manitoba by 50 per cent over the next four weeks, starting the week of January 25
- This results in significant drop in the number of doses planned during the month of February
- Previously planned average for February was 2,500 injections per day, which has now been reduced to 1,496 injections per day
- Total four-week delay is 29,250 doses
- Based on six doses per vial





As more vaccines become available:

- Commit more doses for First Nations for on-reserve use
- Expand the eligibility criteria for our Supersites
- Reach more Congregate Living Settings through our Focused Immunization Teams (FIT)
- Maximize the daily doses administered in our current supersites
- Launch additional supersites, immunization hubs and pop-up clinics
- Establish alternative distribution channels (e.g., doctors' offices, pharmacies) to be ready for when suitable vaccine product becomes available to Manitoba.