



COVID-19 VACCINATION IN MANITOBA

TECHNICAL BRIEFING

March 10, 2021



OPERATIONAL UPDATES

VACCINE DELIVERY MODEL UPDATES



SUPERSITES

In larger centres, supersites allow for rapid and large-scale vaccination for increased speed and efficiency.

3

Winnipeg

7,311

DOSES ADMINISTERED
IN LAST WEEK

48,019

TOTAL DOSES
ADMINISTERED

814

AVG. DAILY DOSES

55

EST. DAILY STAFF (FTE)

Brandon

1,611

DOSES ADMINISTERED
IN LAST WEEK

6,276

TOTAL DOSES
ADMINISTERED

174

AVG. DAILY DOSES

27

EST. DAILY STAFF (FTE)

Thompson

865

DOSES ADMINISTERED
IN LAST WEEK

1,215

TOTAL DOSES
ADMINISTERED

122

AVG. DAILY DOSES

14

EST. DAILY STAFF (FTE)



FOCUSED IMMUNIZATION TEAMS (FITs)

FITs deliver vaccines where people live.

- FITs will visit more than 70 congregate living facilities this week and administer first-doses to nearly 3,000 eligible residents
- As of March 8, nearly 200 sites visited and more than 5,600 first doses given to congregate living residents.
- More than 7,800 second-doses in personal care home immunization campaign

WORKFORCE RECRUITMENT



DAILY OPERATIONAL SCHEDULE

Overall, staffing is down due to lack of vaccine

RBC CONVENTION CENTRE

1,695 Doses



104

TOTAL STAFF (FTE)
50 Immunizers (FTE)

KEYSTONE CENTRE

470 Doses



21

TOTAL STAFF (FTE)
11 Immunizers (FTE)

FIT TEAM - Winnipeg

311 Doses



7

TOTAL STAFF (FTE)
7 Immunizers (FTE)

CURRENT WORKFORCE



2,356

STAFF
As of March 8, 2021

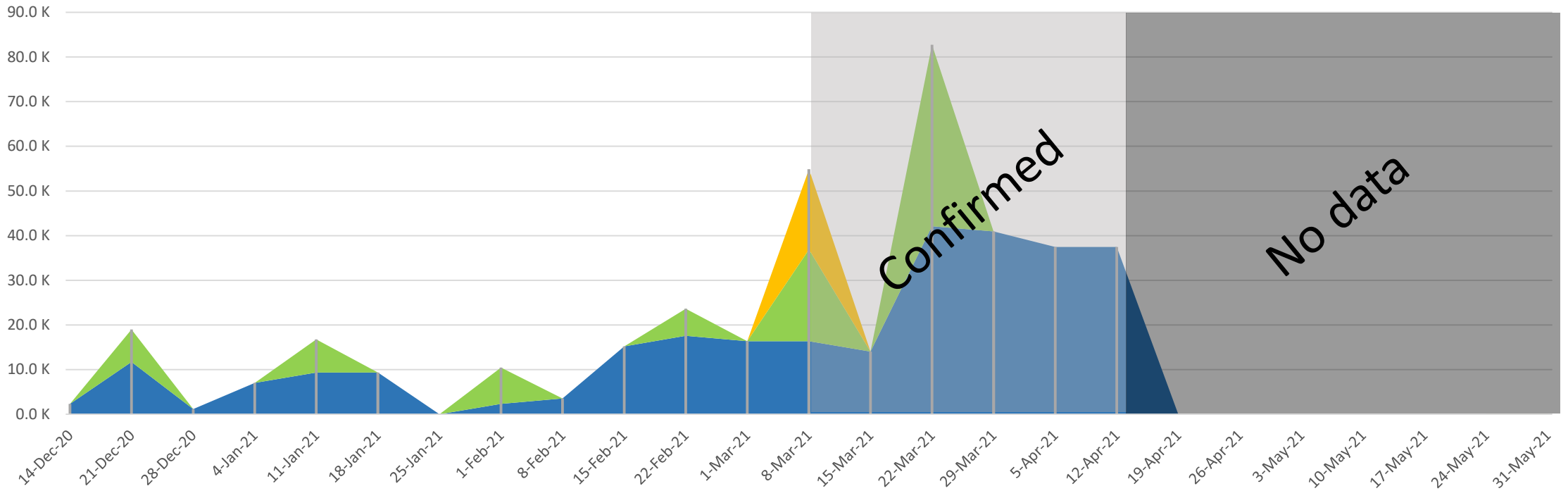
↑ 132
this week

- 1,708 immunizers
- 26 clinic managers
- 33 clinical leads
- 474 navigators
- 115 observers

COVID-19 DOSE DELIVERY SCHEDULE



Doses Received & Projected



	14-Dec-20	21-Dec-20	28-Dec-20	4-Jan-21	11-Jan-21	18-Jan-21	25-Jan-21	1-Feb-21	8-Feb-21	15-Feb-21	22-Feb-21	1-Mar-21	8-Mar-21	15-Mar-21	22-Mar-21	29-Mar-21	5-Apr-21	12-Apr-21	19-Apr-21	26-Apr-21	2021-05-03	2021-05-10	2021-05-17	2021-05-24	2021-05-31
■ AstraZeneca	0.0 K	0.0 K	0.0 K	0.0 K	0.0 K	0.0 K	0.0 K	0.0 K	0.0 K	0.0 K	0.0 K	0.0 K	18.0 K	0.0 K	0.0 K	0.0 K	0.0 K	0.0 K	0.0 K	0.0 K	0.0 K	0.0 K	0.0 K	0.0 K	0.0 K
■ Moderna Doses	0.0 K	7.3 K	0.0 K	0.0 K	7.4 K	0.0 K	0.0 K	8.1 K	0.0 K	0.0 K	6.1 K	0.0 K	20.5 K	0.0 K	40.6 K	0.0 K	0.0 K	0.0 K	0.0 K	0.0 K	0.0 K	0.0 K	0.0 K	0.0 K	0.0 K
■ Pfizer Doses	2.3 K	11.7 K	1.2 K	7.0 K	9.4 K	9.4 K	0.0 K	2.3 K	3.5 K	15.2 K	17.6 K	16.4 K	16.4 K	14.0 K	42.1 K	41.0 K	37.4 K	37.4 K	0.0 K	0.0 K	0.0 K	0.0 K	0.0 K	0.0 K	0.0 K
■ Total	2.3 K	19.0 K	1.2 K	7.0 K	16.8 K	9.4 K	0.0 K	10.4 K	3.5 K	15.2 K	23.7 K	16.4 K	54.9 K	14.0 K	82.7 K	41.0 K	37.4 K	37.4 K	0.0 K	0.0 K	0.0 K	0.0 K	0.0 K	0.0 K	0.0 K

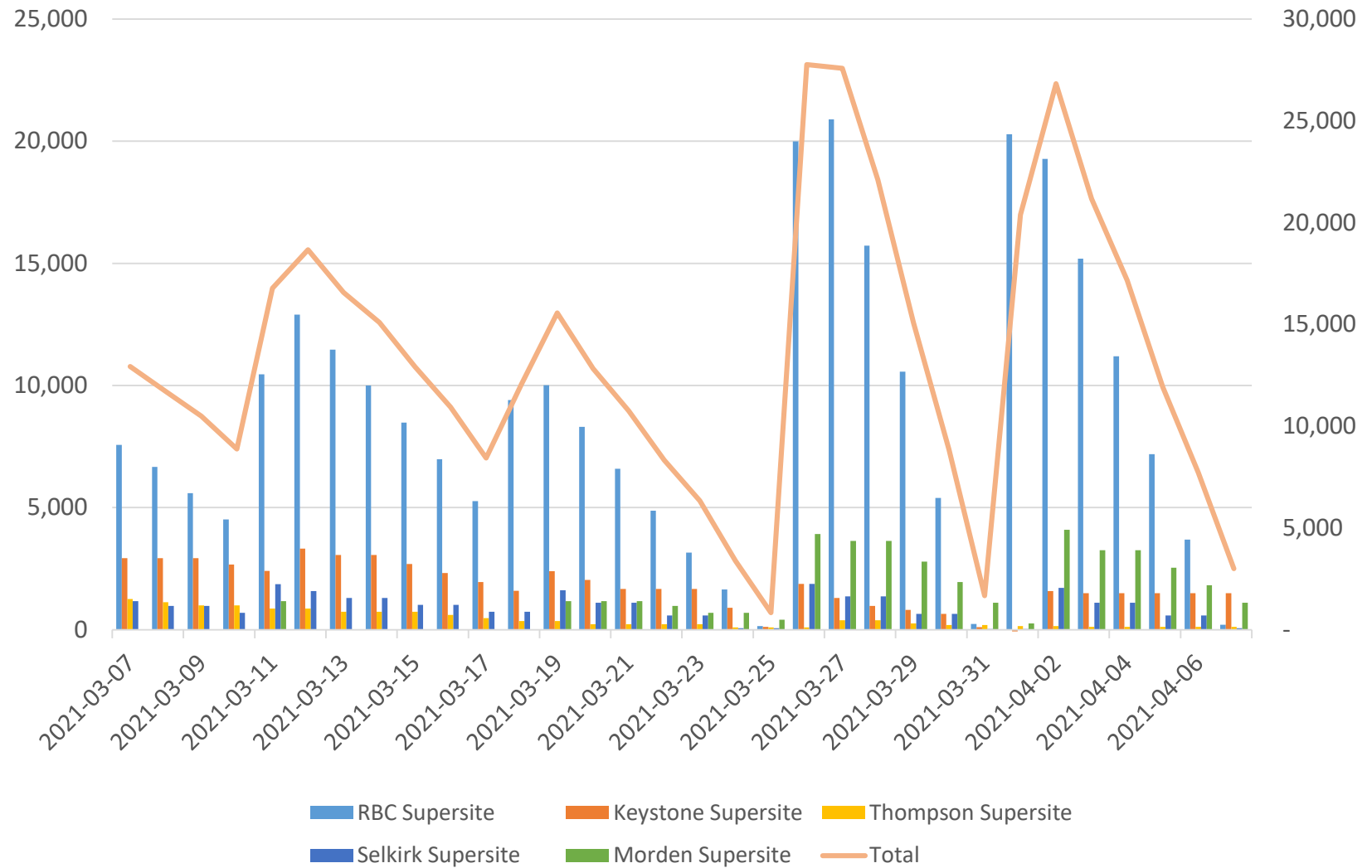
As of March 9, 2021

SUPERSITE INVENTORY MANAGEMENT

Projected for the next 30 days



Closing Stock Balance - Supersites

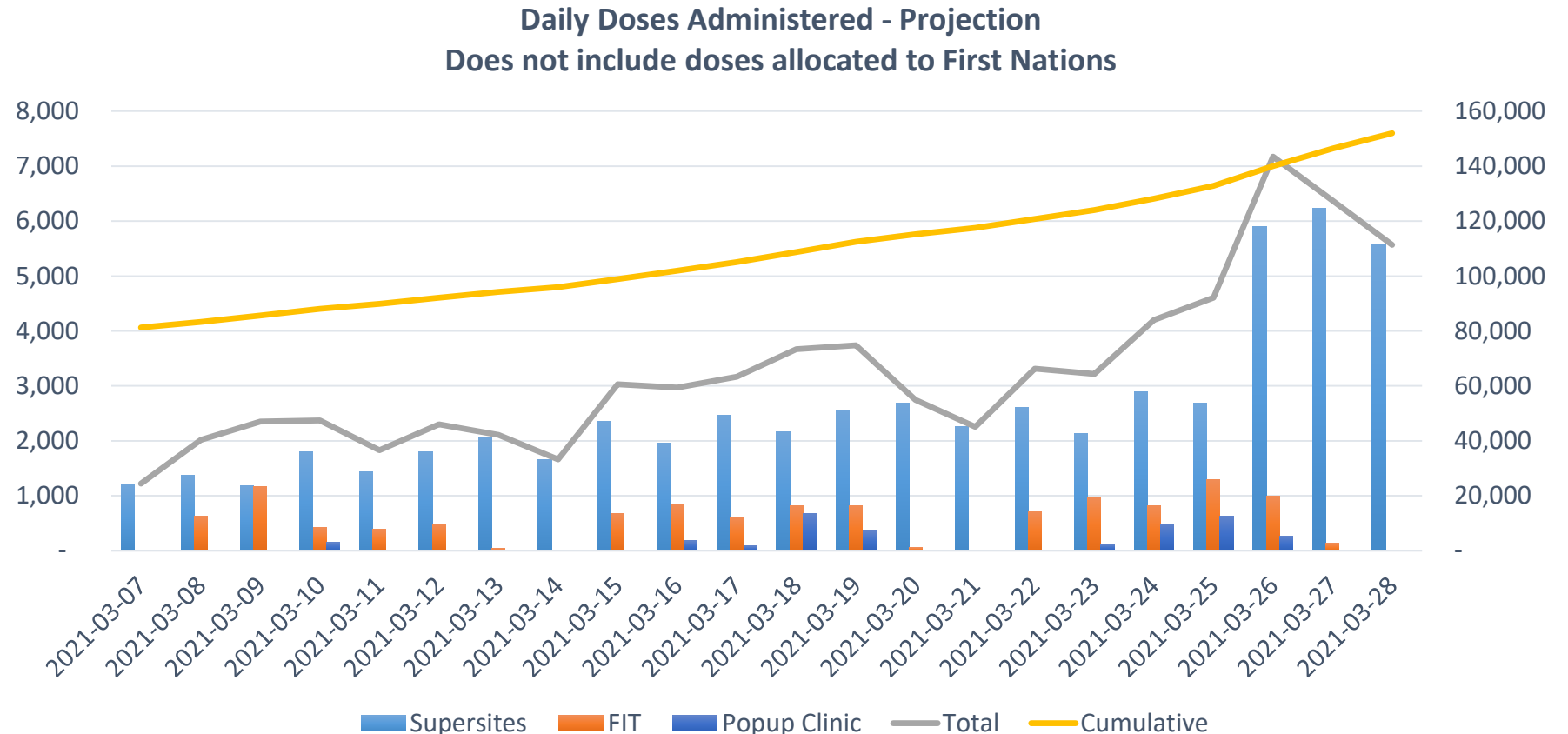


Projections as of March 9. Each rise in doses represents a scheduled delivery.

DOSE ADMINISTRATION PROJECTION



- Based on current supply projections, we estimate an average of 3,455 injections per day in March, subject to current vaccine supply forecasts.



Projected as of March 8

LOW-RANGE SCENARIO



Based on Pfizer, Moderna and AstraZeneca/Covishield vaccines.

70% uptake rate

Cohort	Population Cohort	Start	Finish	Duration	2021											
					Jan	Feb	Mar	Apr	May	Jun	Jul	Aug	Sep	Oct	Nov	Dec
1	Healthcare Workers	2020-12-16	2021-03-31	15.2w	[Yellow bar spanning Jan to Mar]											
2	Personal Care Home Residents	2021-01-11	2021-02-26	7w	[Yellow bar spanning Jan to Feb]											
3	Other congregate living settings	2021-02-19	2021-04-15	8w	[Yellow bar spanning Feb to Apr]											
4	FN general population 60+	2021-03-01	2021-03-15	2.2w	[Yellow bar in Mar]											
5	General population 80+	2021-03-01	2021-03-15	2.2w	[Yellow bar in Mar]											
6	FN general population 50-59	2021-03-10	2021-03-25	2.4w	[Yellow bar in Mar]											
7	General population 70-79	2021-03-10	2021-04-05	3.8w	[Yellow bar spanning Mar to Apr]											
8	FN general population 40-49	2021-04-01	2021-04-15	2.2w	[Yellow bar in Apr]											
9	General population 60-69	2021-04-01	2021-04-15	2.2w	[Yellow bar in Apr]											
10	FN general population 30-39	2021-04-15	2021-04-30	2.4w	[Yellow bar in Apr]											
11	General population 50-59	2021-04-15	2021-05-07	3.4w	[Yellow bar spanning Apr to May]											
12	FN general population 18-29	2021-05-03	2021-05-17	2.2w	[Yellow bar in May]											
13	General population 40-49	2021-05-03	2021-05-17	2.2w	[Yellow bar in May]											
14	General population 30-39	2021-05-17	2021-05-28	2w	[Yellow bar in May]											
15	General population 18-29	2021-05-25	2021-06-14	3w	[Yellow bar spanning May to Jun]											

Projected as of March 8

HIGH-RANGE SCENARIO



Based on Pfizer, Moderna, AstraZeneca/Covishield, Janssen, and Novavax.

70% uptake rate

Cohort	Population Cohort	Start	Finish	Duration	2021											
					Jan	Feb	Mar	Apr	May	Jun	Jul	Aug	Sep	Oct	Nov	Dec
1	Healthcare Workers	2020-12-16	2021-03-31	15.2w	[Yellow bar spanning from Jan to Mar]											
2	Personal Care Home Residents	2021-01-11	2021-02-26	7w	[Yellow bar spanning from Jan to Feb]											
3	Other congregate living settings	2021-02-19	2021-04-15	8w	[Yellow bar spanning from Feb to Apr]											
4	FN general population 60+	2021-03-01	2021-03-15	2.2w	[Yellow bar in March]											
5	General population 80+	2021-03-01	2021-03-15	2.2w	[Yellow bar in March]											
6	FN general population 50-59	2021-03-10	2021-03-25	2.4w	[Yellow bar in March]											
7	General population 70-79	2021-03-10	2021-04-05	3.8w	[Yellow bar spanning from March to April]											
8	FN general population 40-49	2021-04-01	2021-04-15	2.2w	[Yellow bar in April]											
9	General population 60-69	2021-04-01	2021-04-15	2.2w	[Yellow bar in April]											
10	FN general population 30-39	2021-04-05	2021-04-20	2.4w	[Yellow bar in April]											
11	General population 50-59	2021-04-05	2021-04-20	2.4w	[Yellow bar in April]											
12	FN general population 18-29	2021-04-20	2021-05-04	2.2w	[Yellow bar in April]											
13	General population 40-49	2021-05-03	2021-05-17	2.2w	[Yellow bar in May]											
14	General population 30-39	2021-05-05	2021-05-18	2w	[Yellow bar in May]											
15	General population 18-29	2021-05-06	2021-05-21	2.4w	[Yellow bar in May]											

Projected as of March 8

DELIVERING 1.5 MILLION DOSES



SECOND QUARTER EXPANSION

Building from Manitoba's small, deliberate and safe starting point to deliver the largest immunization campaign in provincial history



- Manitoba continues to report **Daily Maximum Capacity**
- This shows how many doses could be delivered on any given day in Manitoba if we had adequate supply.
- This will be updated as new facilities and staff are added to increase capacity.

Site / Approach	Daily Maximum Capacity
Supersites (RBC 1st & 3rd floor, Backup Site, Keystone, Selkirk, Thompson, Vaxport)	11,658
Distributed Model	5,000
Focused Immunization Teams	1,815
Pop-up Clinics	500
Current Daily Maximum Capacity	18,973
TARGET CAPACITY Q2	20,000

CONTINUED PROGRESS



Protecting Manitobans, Building Capacity

- First general population immunizations on March 1, with regular expansions of eligibility criteria
- Community prioritization index announced for First Nation communities across Manitoba, as well as Northern Affairs communities and remote northern municipalities
- Selkirk supersite now open, RBC expansion complete, Morden opening this month
- Vaxport pilot project has immunized nearly 400 people so far, several more days scheduled in current model, then shifting to on-site vaccinations.
- Distributed model preparing to launch, with vaccine delivered to Manitoba this week
- Pop-sites expanding vaccination options in rural/northern Manitoba this month and in future.



ASTRAZENECA, COVISHIELD AND THE DISTRIBUTED MODEL

DISTRIBUTED MODEL UPDATES



DISTRIBUTED MODEL

Clinics and pharmacies apply to provide vaccine.

Working with our partners to be sure they're ready when vaccine arrives.

Medical Clinics

193

SUBMITTED

176

APPROVED

Pharmacies

320

SUBMITTED

181

APPROVED

Total

513

SUBMITTED

357

APPROVED

VACCINE ALLOCATION



Launching with a Pilot Project Approach

- Eligibility cut off February 26 (the date Astra Zeneca/Covishield was approved)
- Allocation to each region by population
- Within each region, consider the relative proportion of flu vaccine administered in the past three years
- Rounded to increments of 50
- Minimum 50, maximum 200 (with some exceptions)

VACCINE ALLOCATION

Decisions on Allocations

Region	Population	Number of Doses Allocated	Number of Locations
Interlake Eastern	9.64%	1,700	22
Northern	5.60%	850	4
Prairie Mountain	12.51%	1,700	17
Southern Health	15.02%	2,550	29
Winnipeg	57.23%	11,200	118
TOTAL	100.00%	18,000	190

Some remaining doses after the per capita allocation were provided to large, high-volume clinics and pharmacies, primarily in Winnipeg, identified as serving urban Indigenous populations



VACCINE DISTRIBUTION

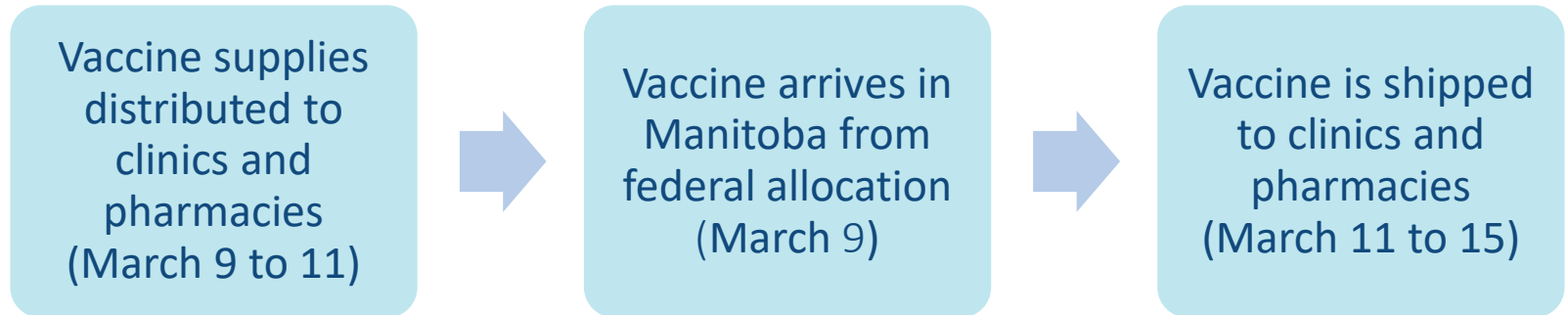


Supplies and Arrivals

- Manitoba will provide medical clinics and pharmacies with vaccine supplies such as syringes
- Supplies have been pre-positioned, so vaccine can be shipped as soon as it arrives in Manitoba.
- First allocation of Covishield vaccine arrived yesterday.
- Shipping to clinics and pharmacies begins soon.

VACCINE DISTRIBUTION

Timelines



VACCINE DISTRIBUTION



Data Reporting

- Doses administered at **medical clinics** entered into the Public Health Information Management System (PHIMS) through existing physician billing system
- Required to report within two business days
- Inventory information reported through a dedicated web form
- Doses administered in **pharmacies** will be entered directly into PHIMS.
- Pharmacists will report inventory information through PHIMS.
- Overall, there will be a slight lag in doses appearing in PHIMS (a few days).

VACCINE DISTRIBUTION



Future Allocations

- Manitoba expects to receive additional shipments of Covshield in April and May
- AstraZeneca vaccine expected between March and May
- More than 400 medical clinics and pharmacies (perhaps 500 or more) expected to be eligible to receive vaccine from future allocation
- Additional refrigerator-stable vaccines will be available through medical clinics and pharmacies as they are approved by Health Canada and allocated to provinces

VACCINE DISTRIBUTION



Communication with Partners & Patients

- Ongoing dialogue with physician and pharmacy representatives.
- Medical clinics, pharmacies receiving an allocation of vaccine were provided with this information earlier in the week
- They also received eligibility information to facilitate their planning.
- A map showing clinics and pharmacies that receive vaccine will be available online.
- Only 18,000 doses of Covishield vaccine this week.
- Because of the small amount of vaccine available, we are asking that health care providers reach out to patients at highest risk to arrange appointments, instead of patients reaching out to their provider.



POP-UP SITES

POP-UP SITES

Next Phase Launches Week of March 15

- One-day clinics will provide more options for rural and northern residents who might not be able to get to a supersite.
- Appointments are required for these sites and will be made through the existing call centre – beginning Thursday.
- Province-wide eligibility criteria apply.
- Over the last few weeks, work has been ongoing to have sites, staff and other plans in place.
- These can now launch with additional vaccine supplies available.



POP UP SITES

Initial two-week schedule,
with more to be added in
the weeks ahead



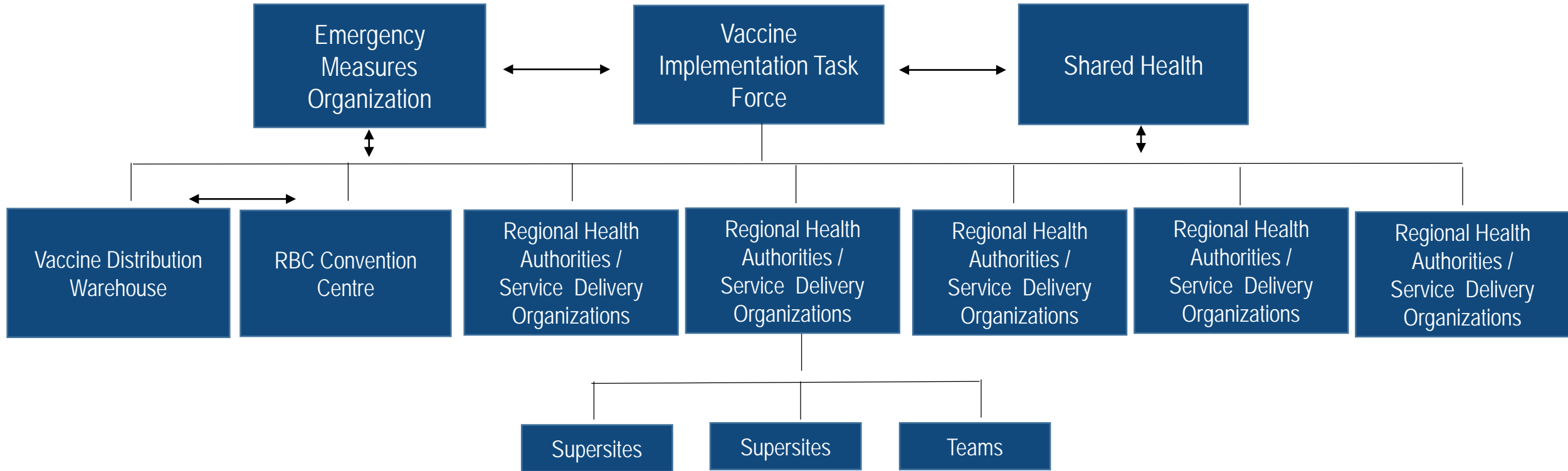
RHA	Service Date	Community
Southern Health - Santé Sud	18-Mar-21	Morris
	18-Mar-21	Portage
	22-Mar-21	Steinbach
	23-Mar-21	Sprague
	24-Mar-21	Pilot Mound
	25-Mar-21	Niverville
Interlake-Eastern Regional Health Authority	16-Mar-21	Gimli
	16-Mar-21	Beausejour
	17-Mar-21	Pine Falls
	18-Mar-21	Ashern
	23-Mar-21	Teulon
	25-Mar-21	Eriksdale
	25-Mar-21	St. Laurent
	26-Mar-21	Pinawa
Prairie Mountain Health	18-Mar-21	Dauphin
	19-Mar-21	Dauphin
	24-Mar-21	Swan River
	25-Mar-21	Swan River
Northern Regional Health Authority	19-Mar-21	Flin Flon
	24-Mar-21	The Pas
	26-Mar-21	Flin Flon
	31-Mar-21	The Pas

RISK ASSESSMENT AND RESPONSE



Threat Response Planning

If there is a province-wide or localized threat that interrupts the delivery of the vaccine, a structure is in place to respond.



EMERGENCY PREPAREDNESS



Anticipating, Preventing, Responding

- Environmental
 - Weather: winter storm, flood, tornado
 - Forest fires
 - Widespread electrical outages
- Infrastructure
 - Local electrical
 - Water/sewage
 - HVAC
 - Structural
- Physical security
 - Threats
 - Vaccine security
- Vaccine and medical supply
 - Vaccine supply / cold chain
 - Backup electrical
 - Movement plans

EMERGENCY PREPAREDNESS



Scenario 1: Large-Scale Power Disruption

- Impacts
 - Critical infrastructure and services
 - Disruption of vaccination operations
 - People expecting to be immunized
 - Vaccine resupply chain
- High-level mitigation strategy
 - Hydro has identified vaccine supersites as critical infrastructure, with plans to monitor, report, re-direct power, and prioritize repairs
- Vaccine recovery
 - Supersites have redundant and back-up power supply, emergency dry-ice storage
 - Vaccine distribution warehouse has redundant and back-up power supply and will coordinate support to supersites
- Vaccine recovery
 - Supersites and the vaccine distribution warehouse have recovery protocols
 - Decisions will depend on expected duration of disruption and other options

EMERGENCY PREPAREDNESS



Scenario 2: Wildfire Evacuation

- Impacts
 - Disruption of vaccinations
 - People to be immunized may be evacuated
 - Local critical infrastructure and services
- High-level mitigation strategy
 - Evacuation planning incorporates COVID-19 risk-reduction as there will be partially-vaccinated populations
 - Supersites will have redundant and back-up power supply, emergency dry-ice storage
- Supersites connected to local responding agencies and authorities
- May be opportunities to vaccinate evacuees in host community
- Vaccine recovery
 - Supersites have vaccine recovery protocols
 - Decisions to be made for vaccine rescue
 - May depend on the length of disruption and local options for vaccine recovery



COVID-19 VACCINATION IN MANITOBA QUESTIONS?