

LAC DU BONNET

Highway 11

Lake Avenue, a PARK, four polished MARBLE PANELS,
interlocking paved stone lined with flowers
in front, flagpole adjacent. Upper
has the shape of the Province of Manitoba.
Provincial Crest in the intersection.

Inscriptions.

On Coat of Arms

A MARI USQUE AU MARE

On central panel

*AT THE GOING DOWN OF THE SUN
AND IN THE MORNING
WE WILL REMEMBER THEM*

Honor Rolls stand beside the central panel.

1914 - 1918...7 Names

1939 - 1945...16 Names





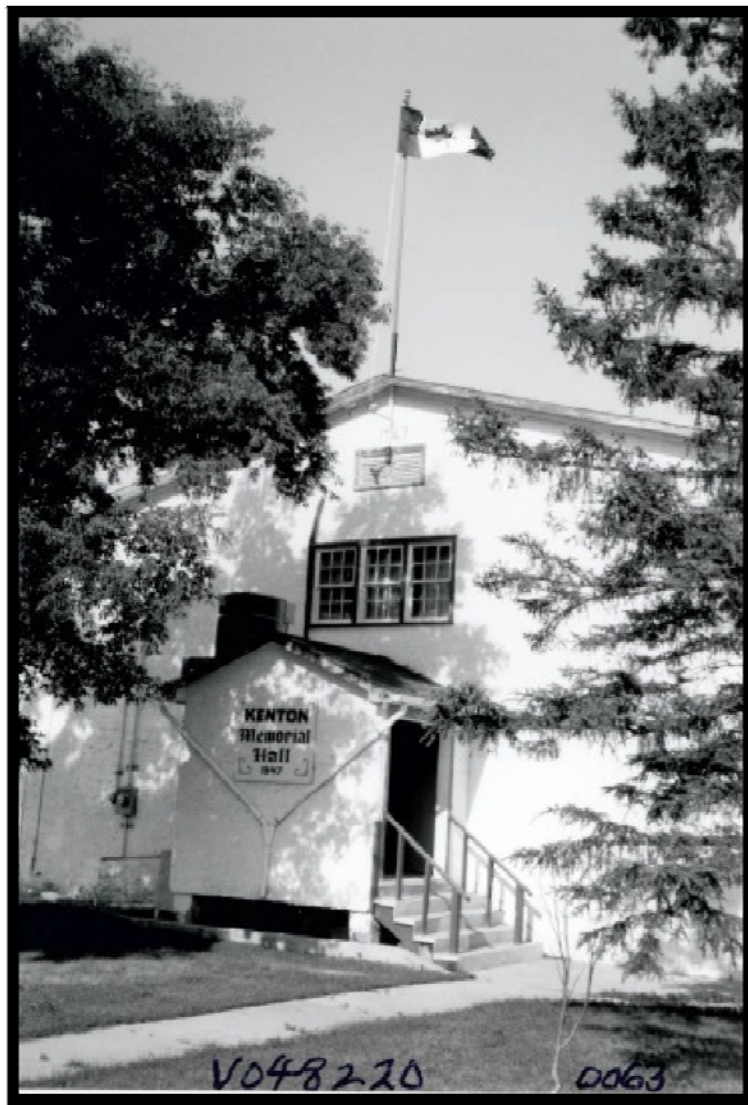
(Photo Courtesy Manitoba Historical Society)



KENTON

Provincial Road 259 off Highway 21

By the Legion, the Community Hall, dated 1947.



(Photo Courtesy Manitoba Historical Society)

LANGRUTH

Highway 50 at Provincial Road 265

Beside Langruth Community Hall, landscaped PARK
with flowerbeds, grass, cement path, two flagpoles
an UPRIGHT COLUMN with plaque.

Inscriptions

1914 WORLD WAR I 1918
(4 Names)

1939 WORLD WAR II 1945
(11 Names)



LUNDAR

Highway 6

Third Street South at Third Avenue South, beside the
Legion Hall, a CAIRN with PLAQUE.

Inscription:

*LEST WE FORGET
IN MEMORY OF
OUR FALLEN COMRADES
FROM THE
LUNDAR
OAKPOINT
CLARKLEIGH
AND
DEER HORN
DISTRICTS
LUNDAR BRANCH NO. 185
ROYAL CANADIAN LEGION*

Note remains of original cairn memorial on
First Avenue North, beside old Legion Building.

Lundar also has a Cairn & Stone Plaque in a gated
compound dedicated to early pioneers.



MacGREGOR

Village of MacGregor Highway 1

The Memorial is on the main street through the village
at MacGregor United Church. It is a **STATUE** of a **SOLDIER**
at ease, standing in a lawn, with flag pole.

Inscriptions:
1914 - 1918.
(30 Names)

Another panel reads:

1939 - 1945

IN GRATEFUL REMEMBRANCE
(16 Names)

Added in June 1995, a plaque to victims of an
air training crash in 1942

IN LOVING MEMORY OF

(7 Names)

*PERISHED IN THE CRASH OF A COMMONWEALTH
AIR TRAINING AIRCRAFT JANUARY 26, 1942
2 1/4 MILES N. W. OF MACGREGOR
REST IN PEACE
DEDICATED JUNE 25, 1995*



(Photo Courtesy Manitoba Historical Society)

MAFEKING

Highway 10

Next to the Legion, and UPRIGHT STONE set in a
flourishing flower garden with flagpole.

Inscription.

*DEDICATED
TO THE GLORY OF GOD
AND TO THOSE WHO
SERVED THEIR COUNTRY
VALOR
AT THE GOING DOWN OF
THE SUN AND IN THE
MORNING, WE WILL
REMEMBER THEM*

*ERECTED BY THE
ROYAL CANADIAN LEGION
MAFEKING BRANCH NO 93
1974 AD*



(Photo Courtesy Manitoba Historical Society)

MANITOU

Highway 3

Manitou and Pembina Municipality

Main Street and Park Avenue. Memorial is a STATUE
of a SOLDIER atop engraved pedestal, with
two flanking marble panels, inside a fenced lot.

Inscriptions.

Statue pedestal lists names on three sides, and
battles of the First World War on the front.
Side marble panels list Second War names.

1914 - 1918...95 Names

1939 - 1945...26 Names

Around base of pedestal:

DULCE ET DECORUM EST PRO DOP PATRIA MORI



(Photo Courtesy Manitoba Historical Society)

MARGARET

Highway 23

Located on main access road off Highway 23 at First Street

The memorial is a STATUE of a SOLDIER at ease, atop a marble stone. It is within a landscaped, fenced corner lot, with flower beds and flag pole.

Inscriptions:

*IN MEMORY OF
THE MEN OF
MARGARET DISTRICT
WHO GAVE THEIR LIVES
IN THE GREAT WAR
1914 - 1918*

(7 Names)

On the base beneath the names:

*IN FLANDERS FIELDS THE POPPIES BLOW
BETWEEN THE CROSSES ROW ON ROW
THAT MARK OUR PLACE AND IN THE SKY
THE LARKS STILL BARELY SINGING FLY
SCARCE HEARD AMIDST THE GUNS BELOW
WE ARE THE DEAD. SHORT DAYS AGO WE LIVED
FELT DAWN, SAW SUNSET GLOW, LOVED AND WERE LOVED
AND NOW WE LIE IN FLANDERS FIELDS*

On a side panel:

*GREATER LOVE HATH NO MAN THAN THIS
THAT HE LAY DOWN HIS LIFE FOR HIS FRIENDS
JOHN 15.11*

1914 - 1918... 7 Names 1939 - 1945... 1 Name



(Photo Courtesy Manitoba Historical Society)

McCREARY

Highways 5 and 50

First Avenue and Railway Street, at the
Royal Canadian Legion Auxiliary Hall.
The Memorial is an UPRIGHT STONE with plaque,
flagpole adjacent. The plaque has a sword
etched on the face.

Inscriptions.

*IN MEMORY OF
OUR FALLEN COMRADES
FROM THIS DISTRICT*

(Names)

LEST WE FORGET

Erected by the Canadian Legion

1914 - 1918... 21 Names 1939 - 1945... 29 Names



(Photo Courtesy Manitoba Historical Society)

MELITA

Town of Melita Highway 83

Melita's Memorial is located in a Park at Summit Street and Elm Street. It is an UPRIGHT STONE and is a central feature of the Park.

Originally dedicated to the 1914 - 1918 War, additional plaques commemorate the South African War, 1899 - 1900, the Second World War 1939 - 1945 and the Korean War 1950 - 1953.

Inscriptions.

IN MEMORY

*THIS MONUMENT WAS ERECTED BY THE CITIZENS OF
THE TOWN OF MELITA AND MUNICIPALITY OF ARTHUR
IN HONOUR OF THOSE WHO GAVE THEIR LIVES
FOR THE CAUSE OF FREEDOM IN THE GREAT WAR*

*THIS CENOTAPH IS DEDICATED TO THE MEMORY OF THOSE
WHO GAVE THEIR LIVES IN WORLD WAR II 1939 - 1945*

Names on listed on a plaque and include one from the South African War, 1899 - 1900.

THEIR NAME LIVETH FOREVER

1899 - 1900... 1 Name

1914 - 1918... 53 Names 1939 - 1945... 15 Names

MELITA ARTHUR



(Photo Courtesy Manitoba Historical Society)

MIAMI

Highway 23

At Kerby Avenue and Broadway Street in a MEMORIAL
PARK, a tall OBELISK, with
adjacent GLASS PANEL.

Inscriptions.

Column

*DEDICATED TO THE MEMORY OF THOSE
OF THE RURAL MUNICIPALITY OF THOMPSON
WHO GAVE THEIR LIVES IN THE GREAT WAR
BY THE BENEVOLENCE OF THE LATE
FREDERICK W. TONKIN*

World War I...34 Names

World War II...17 names

Adjacent Panel, under glass.

*ROLL OF HONOUR
RESIDENTS IN THE
MUNICIPALITY OF THOMPSON
WHO SERVED IN THE ARMED FORCES
(12 Columns of Names)*

Same panel, sub heading with names:

*IN LOVING MEMORY
OF
(17 Names)
TO LIVE IN HEARTS WE LEAVE BEHIND IS NOT TO DIE*



(Photo Courtesy Manitoba Historical Society)

MINIOTA

Rural Municipality of Miniota Highway 83

Memorial located on Highway 83, main route through.

It is a STONE standing within a PARK, with
flower bed, flag stone, and gated enclosure.

Inscriptions.

Front Panel: 1914 - 1918

*IN GRATEFUL
REMEMBRANCE OF THOSE
WHO FELL IN THE GREAT WAR*

*GREATER LOVE HATH NO MAN THAN
THAN THIS
THAT A MAN LAY DOWN HIS LIFE
FOR HIS FRIENDS*

THEIR NAME LIVETH FOREVER

Side: *ERECTED BY THE MUNICIPALITY OF MINIOTA*

Names are listed on the side and back panel, including
one for Korea, 1952. TOTAL NAMES.....74

Rounded flanges at the bottom of the stone have names
of battles: VIMY, YPRES, MONS, SOMME



(Photo Courtesy Manitoba Historical Society)

MINNEDOSA

Town of Minnedosa Highways 10 and 16

Memorial Boulevard at Main Street.

The Memorial is an OBELISK, within a gated enclosure, landscaped, with a flower bed at the base and flagpole. Four concrete balls mark the corners.

Inscriptions. On all four sides:

THEIR NAME LIVETH FOR EVERMORE Kipling

(Names)

Battles listed: YPRES, AMIENS, VIMY. PASSCHENDAELE

1914 - 1918

Second World War names listed on the sloping base.

The front facing base has three additional plaques:

<i>PEACE</i>	<i>KOREAN</i>	<i>NATO</i>
<i>KEEPING</i>	<i>WAR</i>	<i>FORCES</i>
<i>FORCES</i>	<i>1950 - 1953</i>	

1914 - 1918... 100 Names 1939 - 1945... 39 Names

Standing next to the Memorial is a tank dedicated:

*12th MANITOBA DRAGOONS
OBIQUE HONOR ET EQUIS
DEDICATED FOR PEACE
IN HONOR OF THE OFFICERS AND MEN
WHO SERVED IN THIS FAMOUS REGIMENT
1903 1964*



(Photo Courtesy Manitoba Historical Society)

MINITONAS

Provincial Road 366 and Highway 10

Located at Main Street and 3rd Ave in a park.

Memorial is an OBELISK on a concrete platform
inside a chain link enclosure.

Inscriptions:

*IN MEMORY OF
OUR
GLORIOUS DEAD
THE GREAT WAR
1914 - 1918*

(23 Names carved on the side panels)

(A plaque with 9 names from 1939 - 1945
on the front).

THEY DIED THAT WE MIGHT LIVE

The base has four First War battles engraved:
Somme, Lens, Vimy, Ypres.



(Photo Courtesy Manitoba Historical Society)

MINTO

Highway 10

Beside Minto United Church, a CAIRN with metal plates.

Inscriptions:

Upper plate:

*IN MEMORY OF OUR BOYS KILLED IN
THE GREAT WAR 1939 - 1945
(7 Names)*

Lower plate:

*IN MEMORY
OF OUR HONORED DEAD
WHO LAID DOWN THEIR LIVES
IN THE GREAT WAR
AS A SACRIFICE
ON THE ALTAR OF FREEDOM
1914 - 1918
(19 Names)*

*GREATER LOVE HATH NO MAN THAN THIS
THAT HE LAY DOWN HIS LIFE FOR THAT OF HIS FRIENDS*



(Photo Courtesy Manitoba Historical Society)

MORDEN

Highway 3

Morden Centennial Park, Stephen Street and 9th Street,
a STATUE of a soldier between two ENGRAVED PANELS, with an OBELISK above.

Inscriptions:

Front

1914 - 1919

OUR GLORIOUS DEAD

(45 Names)

Side

1939 - 1945

(35 names)

Other panels

DEDICATED

BY THE CITIZENS OF

MORDEN AND

MUNICIPALITY OF STANLEY

1921

TO THE MEMORY OF

OUR BOYS

WHO MADE THE

SUPREME SACRIFICE

IN THE GREAT WAR

1914 - 1919

FOR THE HONOR AND

FREEDOM OF OUR

EMPIRE

THEIR NAMES SHALL

LIVE FOR EVERMORE

KOREA

1950 - 1953

Another panel

LEST WE FORGET

OUR BOYS WHO SLEEP WHERE POPPIES GROW

BETWEEN THE CROSSES ROW ON ROW

THAT MARK THEIR PLACE

THEY ARE THE DEAD. SHORT DAYS AGO

THEY LIVED, FELT DAWN, SAW SUNSET GLOW,

LOVED AND WERE LOVED, AND NOW THEY LIE

IN FLANDERS FIELDS.

TO US FROM FAILING HANDS THEY THREW

THE TORCH: BE IT OURS TO HOLD IT HIGH

IF WE BREAK FAITH WITH THEM WHO DIED

THEY SHALL NOT SLEEP, THOUGH POPPIES GROW

IN FLANDERS FIELDS.

(Names of World War I Battles on another panel)

(Roll of Honour in Morden Legion)



(Photo Courtesy Manitoba Historical Society)

MORRIS

Highway 75

Memorial on main route 75 at 207 Main Street in front of
R.M. of Morris office, on lawn with flag.

It is an OBELISK on a two step base.

Inscription:

*DEDICATED
TO THE MEMORY OF THOSE WHO
PAID THE SUPREME SACRIFICE
IN THE GREAT WAR
1914 - 1918
(16 Names)*

*THEIR NAMES LIVE FOREVER
ERECTED BY THE WOMEN'S INSTITUTE OF MORRIS*

Side Panel:

*WORLD WAR II
1939 - 1945
(21 Names)*

(Historical Marker Plaque mounted on the building
recognizing the Women's Institute 1910 - 1960)



NEEPAWA

Highway 16 and 5

Located on Hamilton Street in front of historic
courthouse. The memorial is a **STATUE** of a **SOLDIER**
atop a stone platform standing beside a
MARBLE SLAB, both within a fenced, garden lot.

Inscriptions.

Stone platform.

ERECTED BY THE PEOPLE OF BEAUTIFUL PLAINS

(Crossed flags etched here)

*IN COMMEMORATION OF THOSE
WHO SERVED IN THE GREAT WAR*

1914 - 1918

<i>MEMORABLE BATTLES</i>	
<i>AMIENS</i>	<i>SANCTUARY WOOD</i>
<i>ARRAS</i>	<i>SOMME</i>
<i>FESTUBERT</i>	<i>STREET ELOI</i>
<i>GIVENCHY</i>	<i>VIMY RIDGE</i>
<i>YPRES</i>	<i>PASSCHENDAELE</i>

Side panels

OUR GLORIOUS DEAD

(122 Names)

Adjacent Marble Slab

1939 - 1945

(2 columns 76 Names)
(3 Names denoted Korean War)

*AT THE GOING DOWN OF THE SUN AND IN THE MORNING
WE WILL REMEMBER THEM.*

*DEDICATED BY THE CITIZENS OF NEEPAWA
AND DISTRICT IN MEMORY OF THESE MEN
WHO GAVE THEIR LIVES IN WORLD WAR II*

Around the corner on Brown Avenue in front of the Legion
stands a field gun from the First World War.



(Photo Courtesy Manitoba Historical Society)

NEWDALE

Highway 16 at Provincial Road 250

Main Street at Market Street, next to grain elevator.

STATUE of a SOLDIER stands atop a stone pedestal,
fringed by boxed flowers, inside a short railing
enclosure, and is visible all down Main Street.

Inscription:

*IN HONOUR AND LOVING MEMORY
OF THOSE WHO DIED
FOR WORLD LIBERTY IN
THE GREAT WARS
1914 - 1918
(22 Names)
1939 - 1945
(14 Names)*



(Photo Courtesy Manitoba Historical Society)

NINETTE

Highway 23

Memorial located on main route, No. 23, beside Ninette Centennial Hall. It is a STONE and MARBLE PILLAR, standing in a chain link compound with flower bed and flag pole.

Inscriptions:

*IN MEMORY OF
THE MEN OF THE
NINETTE DISTRICT
WHO GAVE THEIR LIVES
IN THE GREAT WAR
1914 - 1918
(11 Names)*

(10 Names for 1939 - 45 War on a side panel).



(Photo Courtesy Manitoba Historical Society)

OAKBANK / DUGALD

Provincial Road 206, south of Birds Hill Park

Rural Municipality of Springfield.

Memorial in front of R.M. of Springfield Offices,
628 Main Street, screened by mature trees. Flag pole.

Memorial is a STATUE OF A SOLDIER, atop MARBLE base.

Inscription:

*ERECTED BY THE MUNICIPALITY OF
SPRINGFIELD TO THE IMMORTAL
MEMORY OF THE MEN FROM THIS
MUNICIPALITY WHO GAVE THEIR
LIVES IN THE GREAT WAR
1914 - 1918.*

1914 - 1918... 21 Names 1939 - 1945... 15 Names

Names inscribed in the panels of the statue's base.

Inside the Municipal Office there is a framed SCROLL,
hand drawn and hand written, in coloured inks:

*THIS IS THE ROLL OF HONOUR OF THE RURAL MUNICIPALITY
OF SPRINGFIELD, PROVINCE OF MANITOBA, AND THE NAMES
INSCRIBED ARE THE NAMES OF THE BRAVE AND EVER
HONOURED MEN WHO FROM WITHIN THE BOUNDARY OF THE
MUNICIPALITY ANSWERED THEIR COUNTRY'S CALL TO ARMS
AND JOINED THE FORCES FIGHTING OVERSEAS IN THE
GLORIOUS CAUSE OF MAINTAINING THAT FREEDOM FOR WHICH
THEIR FORBEARS FOUGHT AND IN DOING THIS SECURING AN
EQUAL FREEDOM IN THE FUTURE FOR ALL NATIONS BESIDES
OURSELVES IN THE TRUE INTEREST OF DEMOCRACY.
MAY THE RESULTS ACHIEVED BE THE LASTING MEMORIAL OF
WHICH THIS IS BUT THE TOKEN!*

There follows a list of names, dates, and regiments.
Flanking the names on both sides are coloured
sketches of war scenes such as ships, planes,
interspersed with landscape scenes.

Most of the script and entries are in black ink,
with highlights in red: "Roll of Honour",
"brave", "honoured", "Manitoba".
Blue ink highlights "Springfield".
The sketches are multiple coloured.



MOOSEHORN

Highway 6

At Alf Cuthbert School, a CAIRN with PLAQUE.

Inscription:

IN MEMORY

*OF THE MEN AND WOMEN OF THIS AREA
WHO UNSELFISHLY GAVE THEIR LIVES
FOR FREEDOM IN THE GREAT WARS*

1914 - 1918

1939 - 1945

MOOSEHORN COLLEGIATE JUNE 1967



OAK LAKE

Town of Oak Lake Highway 1

On Assiniboine Street at 3rd Avenue W., beside the Legion,
a STONE CROSS with a sword etched on the cross.

Inscription:
1914 - 1918

(and in larger letters):

1939 - 1945

THEIR NAME LIVETH FOR EVERMORE

(39 Names are listed on three sides)



(Photo Courtesy Manitoba Historical Society)

OAK RIVER

RM of Blanshard Highway 24 at Provincial Road 354

Cochrane Street at Limit Street, in front of the
Municipal Memorial Hall, a CAIRN with a plaque.

Inscriptions.

*DEDICATED TO
THE HEROIC MEN WHO GAVE THEIR LIVES
FOR THEIR COUNTRY IN WORLD WARS I AND II
IN MEMORIAM*

*WORLD WAR I 1914 - 1918
(37 Names)*

*WORLD WAR II 1939 - 1945
(12 Names)*

THEIR NAME LIVETH FOR EVERMORE



(Photo Courtesy Manitoba Historical Society)

OAKVILLE

Highway 13 and Highway 1

At the Cemetery, on Provincial Road 430 north of Highway 1,
STONE with PLAQUE, in landscaped setting, flagpole,
and separate pedestal with visitors book.

Inscription:

*TO THE GLORIOUS MEMORY
OF THE
MEN FROM THIS COMMUNITY WHO GAVE
THEIR LIVES IN THE CAUSE OF FREEDOM*

*1914 WORLD WAR I 1918
(11 Names)*

*1939 WORLD WAR II 1945
(16 Names)*

*AT THE GOING DOWN OF THE SUN AND IN THE MORNING
WE WILL REMEMBER THEM*

Separate Plaque:

*ERECTED AND DEDICATED
BY*

<i>BEAUTIFUL VALLEY</i>	<i>INGLESIDE</i>
<i>CURTIS</i>	<i>MILL CREEK</i>
<i>ELM RIVER</i>	<i>NEWTON</i>
<i>FORTIER</i>	<i>OAKVILLE</i>
<i>GLENGARY</i>	<i>SALEM</i>

*THE OAKVILLE COMMUNITY
ARMED SERVICES AUXILIARY
1946*



(Photo Courtesy Manitoba Historical Society)

PIERSON

R.M. of Edward Highway 3 and Provincial Road 256

Pierson's ROLL OF HONOUR is inside the offices of the
Rural Municipality of Edward on Main Street.

It is a SCROLL, in multiple colours, listing
volunteers to active service.

Inscriptions.

*FOR KING AND COUNTRY
MEMBERS OF
PIERSON COMMUNITY
WHO HAVE VOLUNTEERED FOR ACTIVE SERVICE
WITH
CANADA'S FIGHTING FORCES*

(Four columns of names divided in the middle by a sword).

NORTHWEST REBELLION
3 NAMES

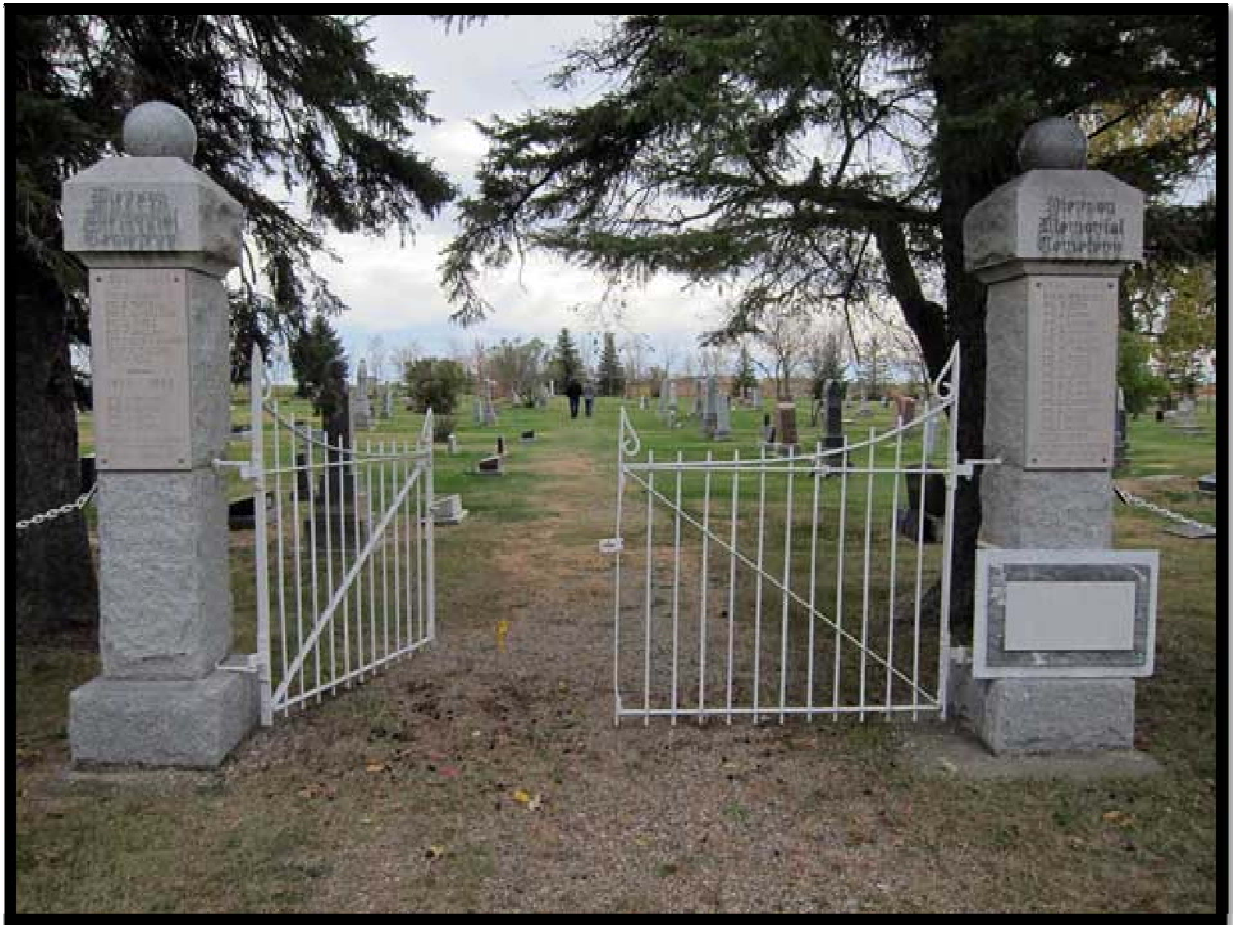
BOER WAR
2 NAMES

FIRST WORLD WAR

SECOND WORLD WAR

1914 - 1918... 68 NAMES
23 KILLED

1939 - 1945...66 names
5 KILLED



(Photo Courtesy Manitoba Historical Society)

PILOT MOUND

Highway 3

Pilot Mound MEMORIAL PARK is located at
Anderson Street and Stanley Ave and has a tall
COLUMN, flagpole and field gun. .

Inscriptions:

Stone pillars holding the gate are
engraved 1914 - 1918 and 1939 - 1945.

*ERECTED
TO THE MEMORY
OF THE MEN WHO MADE
THE SUPREME SACRIFICE IN
THE GREAT WAR
1914 - 1918*

*AND TO THE MEMORY THE MEN WHO MADE
THE SUPREME SACRIFICE IN THE WORLD WAR OF
1939 - 1945*

1914 - 1918...37 Names 1939 - 1945...14 Names

Battles from both wars also listed.



(Photo Courtesy Manitoba Historical Society)

PINE FALLS

Highway11

Memorial is at the intersection of Pine Street and Linden Street, beside Legion House, on Highway11, a CAIRN with CROSS on top, a PLAQUE and flagpole.

Inscription.

*THIS PLAQUE IS ERECTED
IN MEMORY OF THE MEN
OF ABITIBI POWER & PAPER
COMPANY LIMITED AND
SUBSIDIARY COMPANIES
WHO GAVE THEIR LIVES IN
THE SECOND WORLD WAR*

1939 - 1945
(40 Names)

THEY GAVE THEIR ALL IN THE CAUSE OF FREEDOM

PIPESTONE

Highway 2 and 83

Located opposite the Pipestone Hotel, on a corner landscaped lot, a CROSS with inscriptions beneath.

Inscriptions.

VALOUR

LEST WE FORGET

AT THE GOING DOWN OF THE SUN

AND IN THE MORNING

WE WILL REMEMBER THEM

ERECTED BY THE PIPESTONE COMMITTEE

1985 A.D.

On the side: *WORLD WAR I*

WORLD WAR II

KOREAN WAR

(Pipestone Memorial Hall demolished 1984 was the original Memorial).



(Photo Courtesy Manitoba Historical Society)

PLUMAS

Provincial Road 260 and Provincial Road 265

On Burrows Avenue, MEMORIAL RINK, ARCH and MARBLE STONE.

Inscriptions

Arch.	<i>IN MEMORIAM</i>
1914	1918

<i>MEMORIAL RINK</i>	<i>MEMORIAL RINK</i>
<i>IN MEMORY OF</i>	<i>IN MEMORY OF</i>
<i>(5 Names)</i>	<i>(5 Names)</i>
<i>1914 - 1918</i>	<i>1914 - 1918</i>

Separate Marble Stone. (Lettering very faded 1995)

1939 1945
*IN REMEMBRANCE OF
THE MEN OF PLUMAS
AND DISTRICT WHO GAVE
THEIR LIVES IN THE SECOND
WORLD WAR.
(10 names)
"GREATER LOVE HATH NO MAN"*



(Photo Courtesy Manitoba Historical Society)

PORTAGE LA PRAIRIE

Highway 1

Memorial on Saskatchewan Avenue, centre of town,
in a walled recess, set back from sidewalk.

It is a STATUE OF A SOLDIER, atop a marble tablet.

Inscription

*ERECTED BY PORTAGE LA PRAIRIE GATEWAY CHAPTER I.O.D.E.
AND CITIZENS OF PORTAGE LA PRAIRIE
IN MEMORY OF THOSE WHO FELL IN THE GREAT WAR
1914 - 1918*

*GREATER LOVE HATH NO MAN THAN THIS
THAT A MAN LAY DOWN HIS LIFE FOR HIS FRIENDS*

Steps inscribed with names of battles, Passchendale,
Somme, Vimy.

Lower step has plaque added for Korea.

Names on side and rear of large tablet.

1914 - 1918... 162 Names 1939 - 1945... 72 Names

A short walk east to old City Hall leads to a COMMEMORATIVE PLAQUE acknowledging
Canadian Forces Base, Portage la Prairie, as a flight training centre from 1940 - 1992.



(Photo Courtesy Manitoba Historical Society)

RAPID CITY

Town of Rapid City Highway 24

5th Street Sample Lane, in a PARK, beside a lake,
a STONE CROSS, embellished with sword,
atop a STONE CAIRN. The base is laid with gravel.

Inscription:

RAPID CITY AND DISTRICT WAR MEMORIAL

1914 - 1918

(Names)

THEIR NAME LIVETH FOR EVERMORE

1914 - 1918... 38 Names 1939 - 1945... 21 Names



(Photo Courtesy Manitoba Historical Society)

RATHWELL

Highway 2

Opposite the Grain Elevator, across the tracks,
in front of Green Prairie Lodge, an
OBELISK on concrete base, with flowers and flagpole.

Inscriptions.
*IN HONOR OF
THE ILLUSTRIOUS DEAD
OF THIS DISTRICT
WHO FELL
IN THE GREAT WAR
1914 - 1918
THEY NOBLY DID THEIR DUTY*

1914 - 1918... 23 Names 1939 - 1945... 4 Names

Battles carved on the face:

MONS YPRES SOMME VIMY RIDGE



(Photo Courtesy Manitoba Historical Society)

RESTON

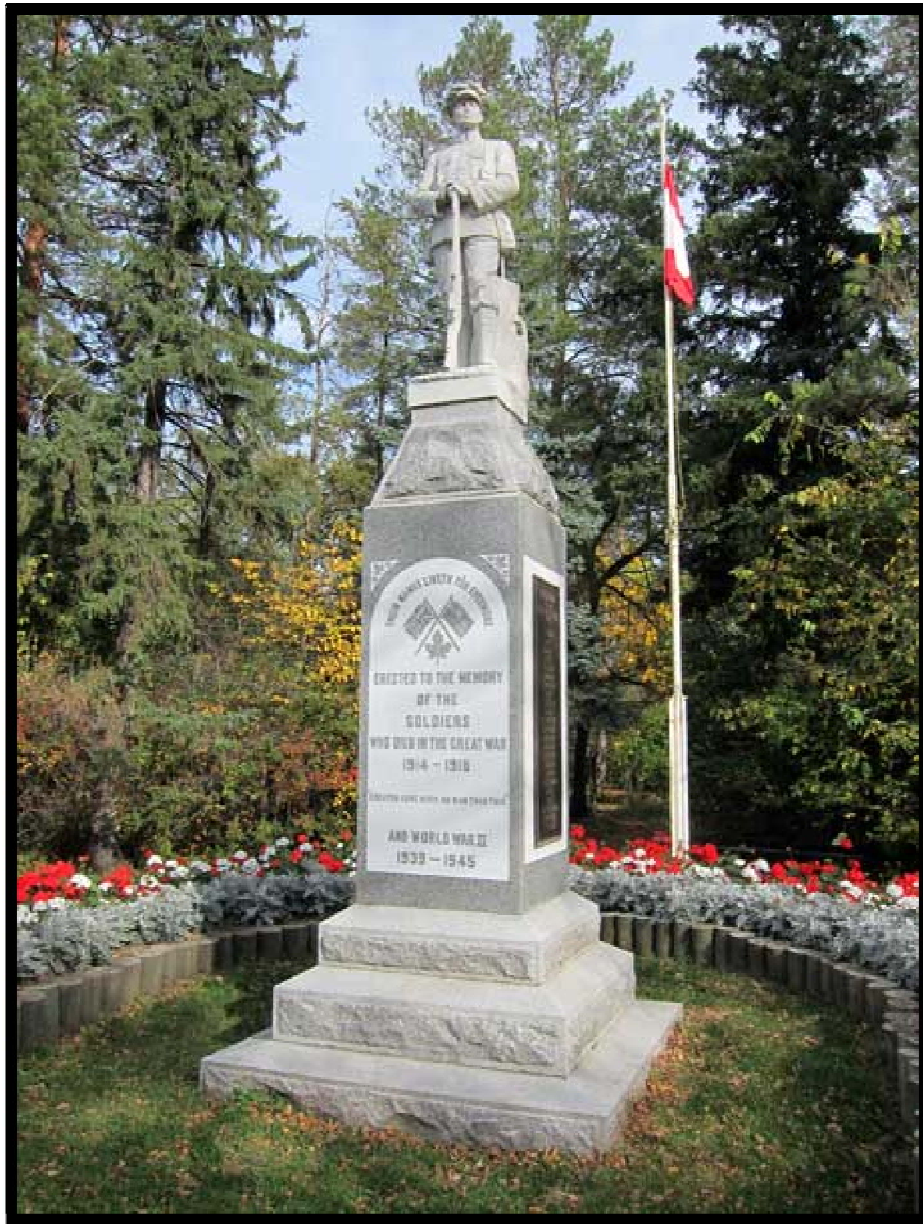
Highway 2

The STATUE of a SOLDIER stands within a PARK on
1st Avenue and 7th Street, approached through lawns,
hedgerows and flowers.

Inscription.

*THEIR NAME LIVETH FOREVER
ERECTED TO THE MEMORY
OF THE
SOLDIERS
WHO DIED IN THE GREAT WAR
1914 - 1918
GREATER LOVE HATH NO MAN THAN THIS*

1914 - 1918... 23 Names 1939 - 1945... 17 Names



(Photo Courtesy Manitoba Historical Society)

RIVERS

Town of Rivers, Highway 25 at Provincial Road 250

Memorial is located in a PARK beside the Legion and
The Post Office. It is a STATUE of a SOLDIER.
Lawns and flower beds radiate from the statue.

Inscriptions:

The base on which the soldier stands has First World
War battles engraved, *VIMY, MONS, YPRES, SOMME.*

The pedestal has lists of names and is dedicated:

*IN MEMORY OF
THOSE WHO FELL IN
THE GREAT WAR
1914 - 1918
THEY GAVE THEIR ALL
1939 - 1945
1950 - 1953*

1914 - 1918... 21 Names 1939 - 1945... 22 Names



(Photo Courtesy Manitoba Historical Society)

ROBLIN

Town of Roblin Highways. 83 and 5

5th Street at 3rd Avenue N. beside Knox United Church,
STATUE of a SOLDIER atop an engraved marble stone.

Inscriptions:
1914 - 1918

*SACRED TO THE MEMORY OF
THE MEN OF
ROBLIN AND DISTRICT
TO WHOSE SUPREME SACRIFICE
THIS MEMORIAL IS DEDICATED*

*YPRES
SOMME
VIMY*

Other battles in concrete base, eg *PASSECHENDAELE, CAMBRAI*

Some 100 names listed on side panels.

The Legion reports a Memorial Hall now demolished,
and nearby Memorials at Dropmore (see ref.) & San Clara



(Photo Courtesy Manitoba Historical Society)

ROLAND

R M of Roland Highway 23

3rd Street and South Avenue, beside MEMORIAL HALL,
STATUE OF SOLDIER atop engraved marble.
DEDICATION PLAQUES and ROLLS OF HONOUR inside hall.

Inscriptions:

DEDICATED

*TO THE MEMORY OF THOSE WHO PAID
THE SUPREME SACRIFICE FOR THE HONOR
AND FREEDOM OF OUR EMPIRE IN
THE GREAT WORLD WAR*

1914 - 1918

ERECTED BY THE MUNICIPALITY OF ROLAND

1922

*GREATER LOVE HATH NO MAN THAN THIS THAT
A MAN LAY DOWN HIS LIFE FOR HIS FRIENDS*

THEIR NAMES SHALL LIVE FOREVER

1914 - 1918...38 Names

1939 - 1945...18 Names

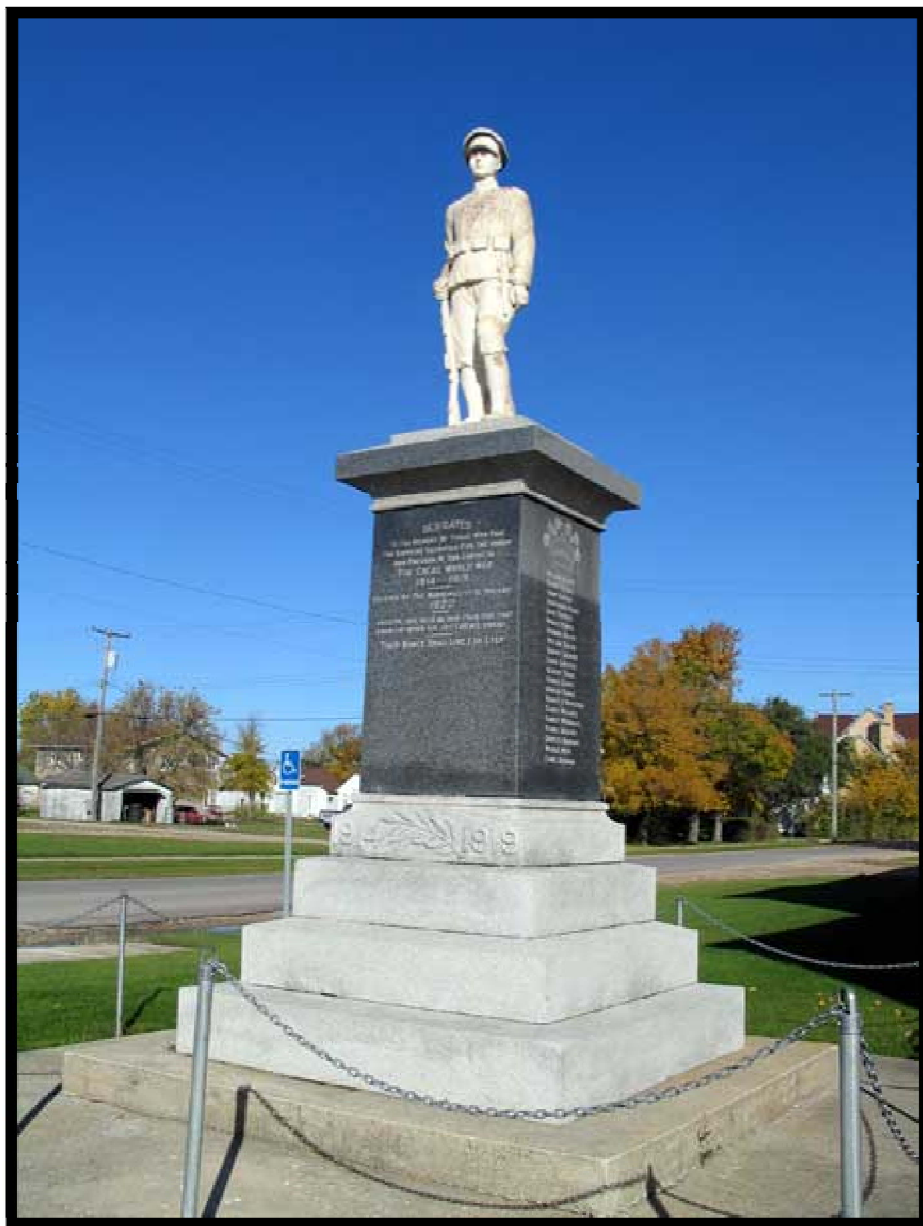
Inside Roland Memorial Hall entrance 2 PLAQUES, more names:

*THESE DIED IN WAR
THAT WE AT PEACE MIGHT LIVE
THESE GAVE THEIR BEST
SO WE OUR BEST SHOULD GIVE
(Names)
LOVED IN LIFE, HONORED IN DEATH,
TREASURED IN MEMORY*

*DEDICATED
IN HONOR AND GRATEFUL TRIBUTE
TO THOSE OF THIS MUNICIPALITY
WHO SERVED IN THE SECOND WORLD WAR
IN DEFENCE OF CANADA AND FREEDOM
1939 - 1945*

*ERECTED BY THE MUNICIPALITY OF ROLAND
1951*

*A TRIBUTE TO THE VALIANT LIVING
A MEMORIAL TO THE HEROIC DEAD*



(Photo Courtesy Manitoba Historical Society)

RORKETON

Provincial Road 276 and 364

Main Street and First Avenue, beside the R.M. of Lawrence office. The Memorial is a MARBLE SLAB on two steps.

Inscription.

*LEST WE FORGET
IN LOVING MEMORY
OF ALL THOSE WHO
GAVE THEIR LIVES
FOR THEIR COUNTRY
BY LAND, SEA OR AIR.*

*AT THE GOING DOWN OF THE SUN
AND IN THE MORNING
WE WILL REMEMBER THEM.*

*LAWRENCE BRANCH 87
ROYAL CANADIAN LEGION 1976*



(Photo Courtesy Manitoba Historical Society)

ROSEAU RIVER FIRST NATION

Provincial Road 201 between Highway 75 and 59
Roseau River First Nation

By the Community Hall, north side, PROVINCIAL ROAD 201,
the Memorial is an upright stone with names and
inscription, and a carving of a warrior attached to
the surface of the slab.

The stone stands inside a railed grass compound
flanked by two flags, the Canadian Flag and the
5 Bands Tribal Flag.

Inscriptions:

*ROSEAU RIVER INDIAN BAND.
IN MEMORY OF OUR GLORIOUS DEAD
WHO SACRIFICED THEIR LIVES IN
WORLD WAR I
WORLD WAR II.
PATRICK GRANBOISE
PETE GRANBOISE
JOSEPH HENRY*

*DONATED BY ARTHUR MANN & GO.
LEST WE FORGET.*



(Photo Courtesy Manitoba Historical Society)

RIDING MOUNTAIN

Highway 5

In front of the Royal Canadian Legion on Highway 5,
a STONE CAIRN, cross on top, next to flagpole.

Inscription.

*IN MEMORY OF THOSE
WHO DIED FOR YOU AND ME
1914 - 1918 1939 - 1945
(11 Names)
LEST WE FORGET*



(Photo Courtesy Manitoba Historical Society)

ROSE ISLE

Provincial Road 245 west of Carman

Opposite General Store, 3 sided BRICK WALL with
inlaid panels of names, and flagpole.

Inscriptions: Centre panel has header

*"TOGETHER
WE WILL REMEMBER".*

1914 - 1918...62 Names 1939 - 1945...69 Names
Korean War 1950 - 1953...4 Names



(Photo Courtesy Manitoba Historical Society)

ROSSBURN

Highway 45 at Provincial Road 264

Main Street at Victoria Avenue, beside Knox United Church, a STATUE of a SOLDIER on a stone pedestal, adjacent trees towering above it.

Inscription:

FOR KING AND COUNTRY

1914 - 1918

(12 Names)

1939 - 1945

(13 Names)



(Photo Courtesy Manitoba Historical Society)

RUSSELL (1)

Highway 16 at 83 and 45

Russell MEMORIAL ARENA (1949) is on Main Street.

On Memorial Boulevard and Assiniboine Street in the middle of the intersection, the STATUE of a SOLDIER on a stone pedestal mounted on steps, with flower box in front. The soldier is leaning on a cross engraved, IN FLANDERS FIELDS.

Inscriptions:

*FOR GOD AND COUNTRY
1914 - 1918*

1914 - 1918... 83 Names 1939 - 1945... 14 Names

*THOSE WHOM THIS MONUMENT
COMMEMORATES WERE NUMBERED AMONG
THOSE WHO AT THE CALL OF KING
AND COUNTRY LEFT ALL THAT WAS DEAR
TO THEM, ENDURED HARDNESS, FACED DANGER,
AND FINALLY PASSED OUT OF THE SIGHT
OF MEN BY THE PATH OF DUTY AND
SELF SACRIFICE, GIVING UP THEIR OWN LIVES
THAT OTHERS MIGHT LIVE IN FREEDOM.
LET THOSE THAT COME AFTER SEE TO IT
THAT THEIR NAMES BE NOT FORGOTTEN*



(Photo Courtesy Manitoba Historical Society)

RUSSELL (2)

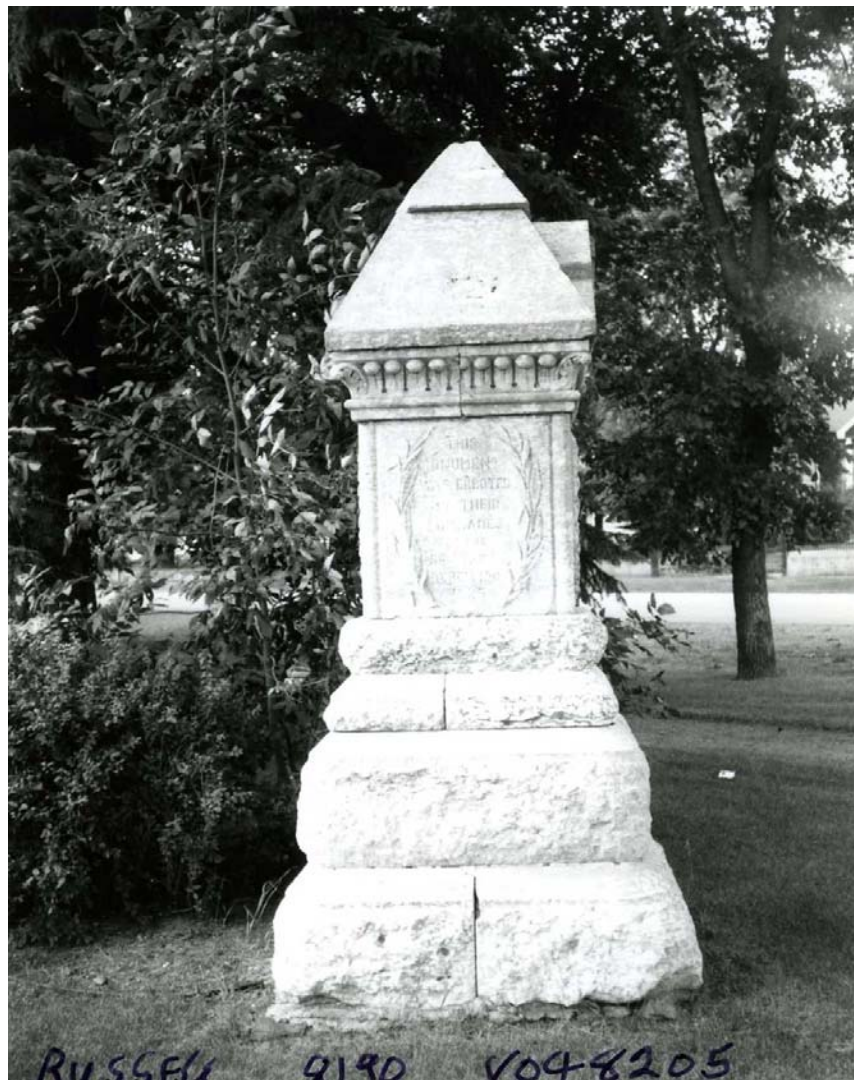
Highway 16 at 83 and 45

One block over on Memorial Boulevard, another monument,
on a corner site, at the edge of a private lawn,
an UPRIGHT STONE, somewhat worn, inscribed:

*IN MEMORY OF
EDWARD BROWN
AND
DARCY BAKER
OF
BOULTON'S MOUNTED
INFANTRY*

and on another side:

*THIS
MONUMENT
WAS ERECTED
BY THEIR
COMRADES
IN THE
NORTHWEST
REBELLION
1885*



SANDY LAKE

Highway 45 and Provincial Road 250

Main Street and Railway Avenue, a corner, landscaped lot, a Marble UPRIGHT tablet on a concrete base, with flagpole.

Inscriptions:
WORLD WAR I
1914 - 1918

(1 Name)

WORLD WAR 2
1939 - 1945

(4 Names)

WE WILL REMEMBER THEM

*THE PEOPLE OF SANDY LAKE AND DISTRICT
ARE PROUD OF THESE MEN
THEY GAVE THEIR LIVES FOR THEIR COUNTRY*



(Photo Courtesy Manitoba Historical Society)

SAN CLARA

Provincial Road 367 east of Highway 83

Memorial CAIRN



(Photo Courtesy Manitoba Historical Society)

SANFORD

Highway 3

On Mandan Drive and Railway Avenue, a PARK with CAIRN
two flagpoles.

There are two inlaid marble tablets listing names.

1914 - 1918...13 Names

1939 - 1945...6 Names



(Photo Courtesy Manitoba Historical Society)

SELKIRK (1)

Highway 9

Eveline Street and Britannia Ave, VETERANS MEMORIAL
GARDENS, STONE MONUMENT with 7 PLAQUES, flagpole.

Inscriptions:

*A MEMORIAL TO THE MEN OF SELKIRK, STREET ANDREWS
AND STREET CLEMENTS WHO FELL IN THE GREAT WAR*

(6 Plaques with some 250 names in columns
1914-1918, 1939-1945, and Korea, 1950-1953)

*KNOW ALL YE WHO PASS BY
THAT FOR YOUR TOMORROW
WE GAVE OUR TODAY*



(Photo Courtesy Manitoba Historical Society)

SELKIRK (2)

Highway 9

Edston Place, off Eveline Street,
Selkirk, a STONE TABLET.

*SACRED TO THE MEMORY OF
THE OFFICERS AND MEN OF
THE 108TH INFTY BATTALION C.E.F.
SELKIRK MANITOBA
THEY WERE BARRACKED NEAR THIS SITE
FEATHER FARM 1916*

(The Flag of the 108th is in
the Army & Navy Club, Selkirk)

On the other side of the stone:

*IN MEMORY OF
WILLIAM HALL
1916 - 1986
RENOWNED MILITARY HISTORIAN
FORMER STAFF SGT. ROYAL WPG. RIFLES
LIFE MEMBER OF
THE ROYAL CANADIAN LEGION NO. 42
THIS STONE WAS ERECTED IN 1987
BY HIS WIFE IRIS & FAMILY*



SHELLMOUTH

Provincial Road 482 west of Highway 83

Shellmouth, west off Provincial Road 482 via gravel road.
The memorial is next to a park, an UPRIGHT COLUMN
in a groomed lot with flagpole.

Inscription.

Battle names at top include, *Passchendaele, Vimy.*

*ERECTED
BY THE PARENTS
IN LOVING MEMORY
OF THE
SHELLMOUTH BOYS
WHO GAVE THEIR
LIVES GLORIOUSLY
IN THE GREAT WAR
1914 - 1918
GREATER LOVE
HATH NO MAN THAN THIS
THAT A MAN LAY DOWN
HIS LIFE FOR HIS FRIENDS*

1914 - 1918... 10 Names 1939 - 1945... 1 Name

Memorial upkeep by Inglis Legion.



(Photo Courtesy Manitoba Historical Society)

SHOAL LAKE

Highway 16 at Highway 21

Memorial is on The Drive on a grassy slope
overlooking the Lake, beside the Communiplex Centre.

It is an UPRIGHT MARBLE TABLET on a concrete base, with
flower bowls and flagpole.

Inscription:

1914 - 1918
(44 Names)

1939 - 1945
(24 names)

*PEOPLE OF SHOAL LAKE AND DISTRICT REMEMBER THESE
MEN. THEY GAVE THEIR LIVES FOR THEIR COUNTRY IN
WORLD WAR I AND WORLD WAR II*



(Photo Courtesy Manitoba Historical Society)

SHILO

Provincial Road 340, south of Highway 1

Royal Canadian Artillery Museum contains memorabilia,
photo displays and weaponry.



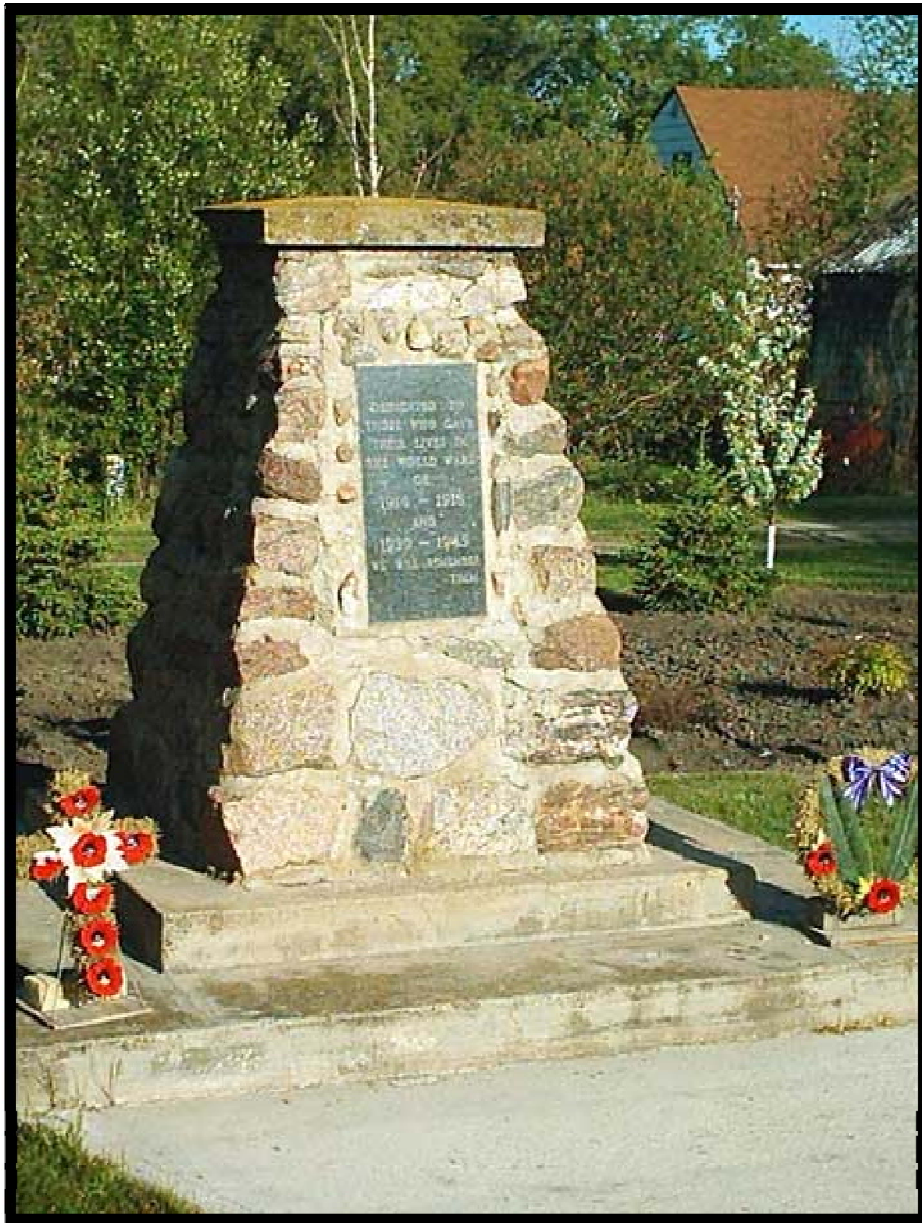
(Photo Courtesy Manitoba Historical Society)

SNOWFLAKE

Provincial Road 242 south of Highway 3

a CAIRN of stones in concrete, with PLAQUE.

(See Darlingford)



(Photo Courtesy Manitoba Historical Society)

SNOW LAKE

Provincial Road 392 off Highway 39

Two Memorials.

On Main Street, an UPRIGHT STONE

Inscription:
*IN MEMORY OF
THOSE WHO GAVE
THEIR LIVES IN
THE SERVICE OF
OUR COUNTRY
DEDICATED 1986
BRANCH 241
AND
LADIES AUXILIARY*

In the Cemetery, a GRANITE MARKER, Legion Plot.

*WE WILL REMEMBER THEM
ROYAL CANADIAN LEGION
LADIES AUXILIARY, 1972*



(Photo Courtesy Manitoba Historical Society)

SOURIS

Town of Souris Highways 2 and 22

Two Memorials at the site

First Street and Fourth Avenue in front of Legion,
two STONE TABLETS with inscriptions, (one moved from
former Hospital).

Inscriptions:

1914 - 1918

*IN HONOUR OF
THE MEN FROM SOURIS AND GLENWOOD
To Whose Memory This Memorial Hospital Is Dedicated
WHO FELL IN THE GREAT WAR
(Four Columns of Names)*

TO YOU WITH FAILING HANDS WE THROW THE TORCH

Second Tablet rendered as a Scroll:

*IN MEMORIAM
(Two columns of names)*

*THIS TABLET IS DEDICATED TO THE GLORY OF GOD
AND IN MEMORY OF THE ABOVE NAMED MEN WHO FROM
THE TOWN OF SOURIS AND THE MUNICIPALITY OF GLENWOOD
MADE THE SUPREME SACRIFICE IN WORLD WAR 2*

1939 - 1945

ERECTED BY THE VETERANS WHO RETURNED

1914 - 1918... 62 Names 1939 - 1945... 27 Names

At the Cemetery a CAIRN with CROSS and PLAQUE.



(Photo Courtesy Manitoba Historical Society)

ST. ADOLPHE

Rural Municipality of Ritchot Provincial Road 200

Memorial in front of Ritchot Centre, on PROVINCIAL ROAD 200,
344 Street Mary's Road, at Municipal Lane. Flag pole.

It is an UPRIGHT TABLET with a slight curve
to its base. There are carvings of a CROSS and a
FLAMING TORCH on the surface.

Inscriptions:

*IN GRATEFUL MEMORY TO THE MEN OF THE MUNICIPALITY
OF RITCHOT WHO FAITHFULLY SERVED CANADA PRESERVING
OUR FREEDOM AND WAY OF LIFE.*

*HONNEUR ET RECONNAISSANCE AUX HOMMES DE LA
MUNICIPALITE DE RITCHOT QUI ONT COMBATEUR
NOBLEMENT ET SACRIFIE LEUR VIE POUR PROTEGER
NOIRE CHER CANADA.*

In the curve of the base to the left:

*1967
LEST WE FORGET*

1914 - 1918... 9 Names 1939 - 1945... 14 Names



(Photo Courtesy Manitoba Historical Society)

SPERLING

Highway 3

Waddell Street at Main Street, a CAIRN

Inscription:
*DEDICATED
TO THOSE FROM
THIS DISTRICT WHO
GAVE THEIR LIVES
IN THE WARS OF
1914 - 1918
1939 - 1945
LEST WE FORGET*



(Photo Courtesy Manitoba Historical Society)

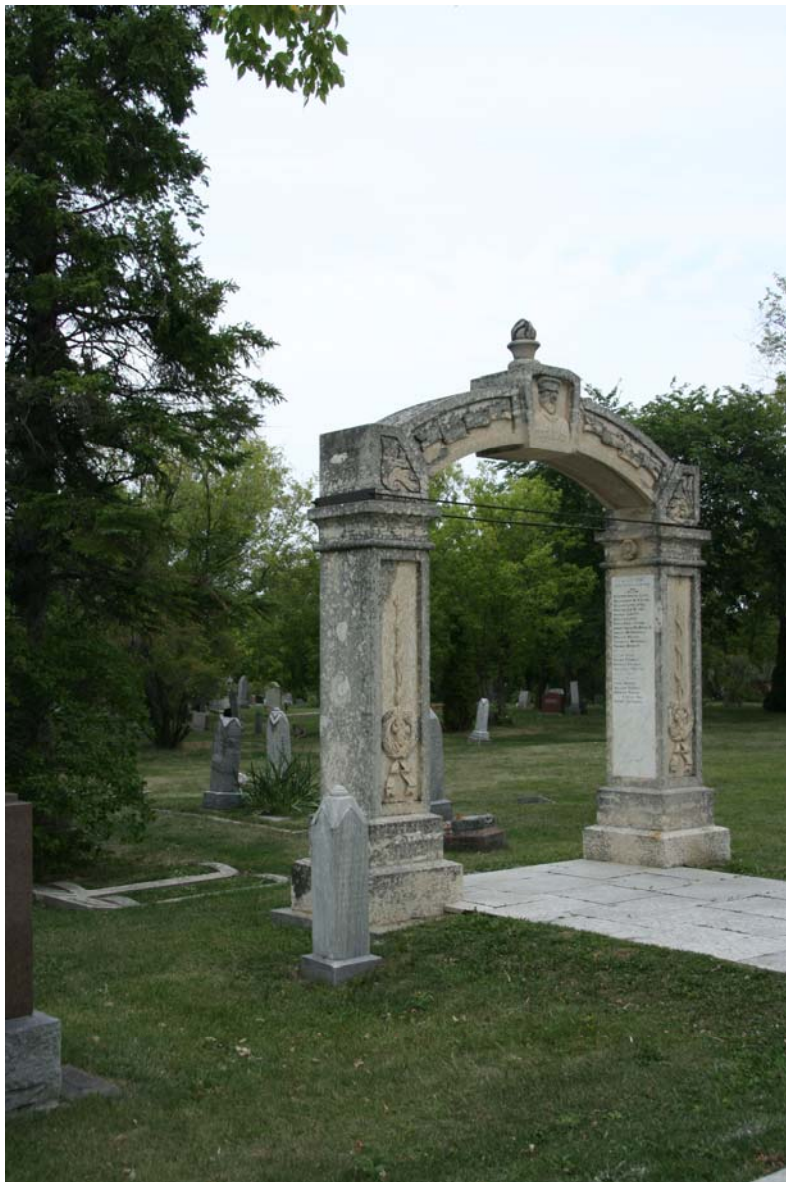
ST. ANDREWS-ON-THE-RED

Highway 9

At the Parish Church of Street Andrews on the Red, off
River Road, a MEMORIAL ARCH.

Inscription: GREATER LOVE
 HATH NO MAN THAN THIS

56 Names to World War I, World War II and Korea.



ST. ANNE

Provincial Road 210 off Highway 12

At the R.C. Parish Church of Ste. Anne, a CAIRN
and PLAQUE.

Inscription:

*RECONNAISSANCE A CEUX QUI
ONT DONNE LEUR VIE POUR
NOTRE LIBERTE*

PAROISSE STE.ANNE PARISH

1876 - 1976

*TO HONOR THOSE WHO SACRIFICED
THEIR LIVES FOR OUR FREEDOM*

WORLD

WAR I

1914 -1918

WORLD

WAR II

1939 - 1945

(16 Names)



(Photo Courtesy Manitoba Historical Society)

ST. CLAUDE

Village of St. Claude Highway 2 and Provincial Road 240

Cemetery at Tache Street and Aspen Street

The Memorial has three STATUES of SOLDIERS, two full size regular soldiers and one bust of an officer, flanked by two flagpoles, and two field guns. The officer is mounted on a column faced with a cross. All three stand on a concrete platform inscribed:

1914 - 1918

ILS SONT MORTS POUR NOUS

CANADA

FRANCE

THEY DIED FOR US

1914 - 1918... 19 Names 1939 - 1945... 2 Names



ST. LAZARE

Highway 41

At the intersection of Main Street and Avenue Fouillard,
an UPRIGHT STONE, with PLAQUE, flagpole.

Inscription:

LEST WE FORGET

WORLD WAR I

(11 Names)

WORLD WAR II

(3 names)

RAPPELONS NOUS DEUX



(Photo Courtesy Manitoba Historical Society)

ST. LAURENT

Highway 6

Original CAIRN located at old Community Hall.

New Monument, UPRIGHT STONE, located at Church,
two flagpoles.

Inscriptions

THOSE WHO DIED

*THEY SHALL NOT GROW OLD
AS WE ARE LEFT TO GROW OLD
AGE SHALL NOT WEARY THEM
NOR THE YEARS CONDEMN
AT THE GOING DOWN OF THE
SUN AND IN THE MORNING
WE SHALL REMEMBER THEM*

WORLD WAR I

1914 - 1918

WORLD WAR II

1939 - 1945

KOREA

1950 - 1953



(Photo Courtesy Manitoba Historical Society)

ST. PIERRE-JOLYS

Village of St. Pierre-Jolys Highway 59

Memorial is in centre of village, Joubert Street

The Monument consists of TWO STATUES, one a SOLDIER,
the other a WOMAN with banner and sword, Presumably
Joan of Arc. 1914 - 1918 engraved on step, flagpole.

Inscriptions:

*A LA GLORIEUSE MEMOIRE
DE
NOS BRAVES TOMBES
AU CHAMP D'HONNEUR*

(list of names with ages, including one, age 16
another age 18)

1914 - 1918... 8 Names 1939 - 1945... 6 Names

Another inscription unrelated to the Wars at the base of the soldier's statue is in memory of an
RCMP Constable killed in the line of duty nearby, in 1971.



(Photo Courtesy Manitoba Historical Society)

STE. ROSE DU LAC

Highways 5 and 68

Located at the Legion, 1st Avenue West, 3 MARBLE PANELS
with a CROSS on the middle panel.

Inscription

*TO THE MEN OF
STE. ROSE DU LAC
AND DISTRICT
WHO GAVE THEIR LIVES
FOR THEIR COUNTRY
IN WORLD WAR I AND II
AND THE KOREAN WAR*

1914 - 1918
8 Names

1939 - 1945
8 Names

Korea
1 Name



(Photo Courtesy Manitoba Historical Society)

STEINBACH (1)

City of Steinbach Highway 12 south of No. 1

Memorial located Main Street and Reimer, an
UPRIGHT STONE, set in a grassy patch with
footpaths, on corner, at the intersection.

Inscription:

*LEST WE FORGET.
DEDICATED
IN GRATEFUL TRIBUTE
TO THE MEMORY OF
THE MEN AND WOMEN
OF STEINBACH AND DISTRICT
WHO SERVED THEIR COUNTRY.
WORLD WAR 1
1914 - 1918
WORLD WAR II
1939 - 1945
KOREAN WAR
1950 - 1953
GREATER LOVE
HATH NO MAN THAN THIS
THAT A MAN LAY DOWN HIS LIFE
FOR HIS FRIENDS
John XV 13*



STEINBACH (2)

Just outside Steinbach look also for the MENNONITE MONUMENT, dedicated to VICTIMS OF WAR AND TERROR

located on Highway 12, north of the city.

The monument is an UPRIGHT COLUMN, NEEDLE SHAPED.

Inscriptions:

There are descriptive panels around the base of the Monument headed as follows:

1. *IN MEMORY OF VICTIMS OF A VIOLENT AGE*
2. *TO THE UNKNOWN VICTIMS 1914-1955*
(Russian Labour Camps)
3. *TO THE MENNONITE WOMEN 1929-1953*
(Victims of family break up and persecution)
4. *TO THE VICTIMS OF WORLD WAR II 1939-1945*
(Plunder of Mennonite Settlements in Russia)
5. *TO THE VICTIMS OF TERROR 1929-1941*
(In Labour Camps and Prisons of Russia)
6. *TO THE VICTIMS OF WAR AND ANARCHY 1914-1921*
(During Russia's period of War and Civil War)

The MENNONITE MONUMENT was erected to commemorate the persecution and suffering of Mennonite Church Faithful in Russia and beyond its borders in Eastern Europe.

A PAMPHLET entitled "MENNONITE MONUMENT" is available next door at the Mennonite Heritage Village.



STONEWALL

Town of Stonewall, R.M. of Rockwood Highway 67

Memorial located in a PARK which occupies two blocks,
from Main Street to 2nd Street East, bounded by Market Street
Fronts on to Highway 67 route into town from Highway 7.

The Park is a landmark at this entrance to town, and
the Monument elevated on a grassy mound, standing on
four steps, dominates the park. Benches are labelled,
" Courtesy of Royal Canadian Legion, Branch 152."

Memorial is a towering PILLAR with four sides on a
four step base, with functional fountain basins built
into each side. 4 Lion Heads Protrude from the flat
faces of each side.

Inscriptions carved on each side as follows:

side	side	side	side
1	2	3	4

IN MEMORY OF THOSE WHO FELL THE GREAT WAR 1914-1918

Metal plates containing names are fixed under the above,
top plates listing the First War and lower plates the
Second War. KOREAN WAR plaque also attached.

1914 - 1918... 102 Names 1939 - 1945... 73 Names

Carved into the lower stone base sides:

<i>VIMY</i>	<i>YPRES</i>	<i>ARRAS</i>	<i>SOMME</i>
-------------	--------------	--------------	--------------

Stonewall Legion on Main Street
has a Marble UPRIGHT SLAB
inscribed:

1914 -1918
1939 -1945
KOREA

LEST WE FORGET



(Photo Courtesy Manitoba Historical Society)

STONY MOUNTAIN

Rural Municipality of Rockwood Provincial Road 231, Highway 7

Memorial is on Memorial Boulevard at Provincial Road in a
PARK. It is a huge UPRIGHT STONE with flagpole.

Inscription, carved into the stone blocks...

OUR GLORIOUS DEAD
Below...

*THIS CENOTAPH WAS ERECTED IN 1924
AND WAS REMODELLED IN OR ABOUT 1947
BY THE PEOPLE OF STONY MOUNTAIN
IN GRATEFUL TRIBUTE TO THE 230 MEN
AND WOMEN OF STONY MOUNTAIN AND
DISTRICT WHO VOLUNTEERED THEIR
SERVICE AND THEIR LIVES IN THE ARMED
FORCES OF TWO WORLD WARS AND WHO
RETURNED TO LIVE IN THIS COMMUNITY.
STONY MOUNTAIN, A COMMUNITY OF 380
PEOPLE, HAD THE HIGHEST PER CAPITA
OF VOLUNTEERS IN THE BRITISH
COMMONWEALTH.*

*THIS PLAQUE PLACED HERE BY
THE ROYAL CANADIAN LEGION BRANCH
142 OF STONY MOUNTAIN
1992*

*TO THE GLORIOUS MEMORY
OF THE MEN WHO GAVE THEIR
LIVES IN TWO WORLD WARS
1914- 1918 1939 - 1945
(Names)*

The Legion Hall has a Memorial Fireplace, and the elementary
school has a Scroll listing those who served.



(Photo Courtesy Manitoba Historical Society)

STRATHCLAIR

Highway 16 at Provincial Road 354

Minnedosa Street at Mountain Street, in front of
the Rural Municipality of Strathclair office, an
UPRIGHT STONE, with attached plaque, on a corner
lot with flower beds.

Inscriptions:

1914

1918

OUR HONORED DEAD

(28 Names)

The Plaque reads:

1939 *World War II* 1945

(14 Names)

NATO FORCES

(1 Name)



(Photo Courtesy Manitoba Historical Society)

SWAN LAKE

Highway 23

Two Memorials.

MOREAU MEMORIAL PARK at 5th Street beside the Legion
has an UPRIGHT STONE.

WORLD WARS

I 1914 - 18 II 1939 -45

1950 -KOREA-1953

On 2nd Street N and Couch, Lorne Memorial
Hospital, a PLAQUE inside the entrance.

*TO THE GLORIOUS MEMORY OF
THE FOLLOWING MEN WHO GAVE THEIR LIVES
IN THE TWO WORLD WARS*

1914 - 1918

(11 Names)

1939 - 1945

(6 Names)



(Photo Courtesy Manitoba Historical Society)

SWAN RIVER

Highways 10 and 83

Several memorials.

Second Street N. and Seventh Avenue N. by Duncan School an
UPRIGHT STONE CAIRN on the edge of the school grounds.

Inscription:

*ERECTED TO THE MEMORY OF THOSE OF
SWAN RIVER WHO ANSWERED THE CALL OF
DUTY AND PAID THE SUPREME SACRIFICE
IN THE GREAT WAR 1914 - 1918*

Further along the same street on a corner of the school
grounds a plaque commemorates students and teachers.

*TO THE GLORY OF GOD
AND
IN LOVING MEMORY OF
THE TEACHERS AND STUDENTS
OF THIS SCHOOL
WHO GAVE THEIR LIVES IN THE WARS
1914 - 1918 1939 - 1945*

On Highway 10A at Birchwood Cemetery, an UPRIGHT SLAB.

Inscription:

*DEDICATED TO
THE GLORY OF GOD
AND THE MEN AND
WOMEN OF SWAN
RIVER VALLEY
WHO SERVED
THEIR COUNTRY*

VALOR

*LEST
WE
FORGET*

*ERECTED BY THE ROYAL CANADIAN LEGION
SWAN RIVER BRANCH NO. 39 1962*

Dedicated WINDOWS are located at Anglican and United Churches.



(Photo Courtesy Manitoba Historical Society)

TEULON

Rural Municipality of Rockwood Highway 7

Memorial in the Elementary School Grounds, Beach Road,
west off Highway 7, an UPRIGHT COLUMN on a 3 step base.

Inscription.

IN MEMORIAM TEULON AND DISTRICT

FIRST WORLD WAR

SECOND WORLD WAR

1914 - 1918

1939 - 1945

(14 Names)

(17 Names)

LEST WE FORGET



(Photo Courtesy Manitoba Historical Society)

TREESBANK

Provincial Road 530 North Off Highway 2

Railway Street, near Oak Street, a WOODEN STRUCTURE, about 10 ft. tall shaped like a tower, with shingled overhang.

Inscriptions:

TREESBANK WAR SHRINE

Lower down:

TREESBANK WAR MEMORIAL

1914 - 1918

Deterioration apparent on the wooden surfaces and lettering of the inscription faded and missing in part.





(Photo Courtesy Manitoba Historical Society)

TREHERNE

Village of Treherne Highway 2

Memorial is a STATUE of a soldier in a gated park,
South Street and Broadway, and Duncan Avenue

Inscription.

*DEDICATED TO THE MEMORY OF
THE SOLDIERS OF THE TREHERNE DISTRICT
WHO MADE THE SUPREME SACRIFICE
IN THE GREAT WARS.*

1914 - 1918

1939 - 1945

Names are inscribed on the sides and back, below
carved battle names, *Ypres, Vimy, Somme,*
Passchendaele

1914 - 1918... 23 Names 1939 - 1945... 7 Names



(Photo Courtesy Manitoba Historical Society)

TYNDALL

Highway 44

A central feature in Tyndall Centennial Park,
an UPRIGHT COLUMN, with flower beds and 3 flags.

Inscriptions:

*TYNDALL'S TRIBUTE
TO HER
FALLEN HEROES
AND
IN LOVING MEMORY
(12 Names)
THEIR NAMES LIVE FOREVER
THE GREAT WAR
1914 - 1918*

*SACRED TO THE
MEMORY
OF OUR BOYS
WHO MADE
THE SUPREME
SACRIFICE
(4 Names)
THEY SERVED TILL DEATH
THE 2nd WORLD WAR
1939 - 1945*

*KOREA
1950 - 1953*



(Photo Courtesy Manitoba Historical Society)

VIRDEN

Town of Virden Highway 1

3 Memorials.

Main Memorial stands within Victoria Park
located at Lyon Street W. and Seventh Avenue S.
The tall STONE PILLAR has a landscaped surround,
and flagpole.

The column has a cross carved on one side above the
years of the First War, 1918, 1917, 1916, 1915, 1914.
In front, embedded in stone, is a real sword. On the
flat surface in front of that, *YPRES TO MONS.*

Inscriptions
*LET US
HIGHLY RESOLVE
THAT THE DEAD
SHALL NOT HAVE
DIED IN VAIN*

Behind the sword:

DEEP BURIED LIES THE SWORD

Names listed on the front and rear faces.

1914 - 1918... 70 Names 1939 - 1945... 35 Names

The Cemetery has a CROSS OF SACRIFICE honouring World War I
dead dating from 1926, and a GRANITE MEMORIAL erected by the Legion in 1982 honouring
veterans of World War II and Korea.



(Photo Courtesy Manitoba Historical Society)

WASKADA

Waskada Village Provincial Road 251

A CAIRN located inside MEMORIAL PARK on Mountain Avenue at Second Street, stands within a circular flower bed, with flag pole. There is an ARCH over the entrance to the Park

Inscriptions.

The Plaque on the Cairn reads:

1867 - 1967
CANADIAN CENTENNIAL
LEST WE FORGET
THIS CAIRN WAS ERECTED BY
THE WASKADA BRANCH NO. 92 OF
THE ROYAL CANADIAN LEGION
TO HONOUR THE MEMORY OF THOSE
WHO GAVE THEIR LIVES IN
WORLD WAR I AND WORLD WAR II
IN DEFENCE OF OUR FREEDOM
DEDICATED JULY 2ND 1967



(Photo Courtesy Manitoba Historical Society)

WAWANESA

Village of Wawanesa Highway 2

The Memorial is an OBELISK, located on Cliff Street at 4th Street. It commands both the main street of the village and the top of a cliff flanking the River Souris. Stone columns enclose the monument and there is a fenced compound with flag pole to complete the site.

Inscriptions

*THIS MONUMENT
WAS ERECTED BY
A GRATEFUL PEOPLE
IN MEMORY OF THOSE WHO
GAVE THEIR LIVES FOR
FREEDOM IN THE GREAT WAR
1914 - 1918
GREATER LOVE HATH NO MAN
THAN THIS THAT A MAN
LAY DOWN HIS LIFE
FOR HIS FRIENDS*

1914 - 1918... 19 Names

1939 - 1945... 12 Names



(Photo Courtesy Manitoba Historical Society)

WESTBOURNE

Highway16

Upright COLUMN atop two concrete platforms,
concrete flower bowls at each side, and flagpole.

Inscription

IN MEMORY

OF OUR

FALLEN HEROES

(12 Names 1914-1918

4 Names 1939-1945)

THEIR NAMES LIVE FOREVER



(Photo Courtesy Manitoba Historical Society)

WINKLER

Highway 3

At the Civic Offices illustrated oil cloth,
ROLL OF HONOUR.

Inscription:

HONOR

ROLL

WINKLER

(5 Columns, 132 Names)

SUPREME SACRIFICE

1939

1945



(Photo Courtesy Manitoba Historical Society)

THORNHILL

Highway 3

Inside Morden Legion, *ROLL OF HONOUR.*

1939

1945

THOSE WHO SERVED WITH THE ARMED FORCES
(31 Names)
and
IN MEMORIAM
KILLED IN ACTION
(4 Names)



WINNIPEG BEACH

Town of Winnipeg Beach Highway 9

In front of the Winnipeg Beach Credit Union, a
STONE CAIRN inscribed,

LEST WE FORGET

1914 - 1918

1939 - 1945



(Photo Courtesy Manitoba Historical Society)

WINNIPEGOSIS

Highway 20

Memorial is on Main Street, a CAIRN, erected
*in memory of those who served in the
Great War, 1914 -1918.*



(Photo Courtesy Manitoba Historical Society)

WOODLANDS

Highway 6

Main Street and Porteous Avenue

CAIRN with flagpole.

(Plaque removed for refurbishing at time of
visit, Aug. 1996)



(Photo Courtesy Manitoba Historical Society)