

Manitoba Advanced Education and Literacy

**Annual Report
2012-2013**





MINISTER OF ADVANCED EDUCATION AND LITERACY

Room 162
LEGISLATIVE BUILDING
WINNIPEG, MANITOBA, R3C 0V8
CANADA

His Honour the Honourable Philip S. Lee, C.M., O.M.
Lieutenant Governor of Manitoba
Room 235 Legislative Building
Winnipeg MB R3C 0V8

Your Honour:

I have the privilege of presenting for the information of Your Honour the Annual Report of Manitoba Advanced Education and Literacy for the fiscal year ending March 31, 2013.

Respectfully submitted,

Original Signed By:

Honourable Erin Selby





Deputy Minister of Advanced Education and Literacy
Room 156 Legislative Building
Winnipeg, Manitoba, Canada R3C 0V8

Honourable Erin Selby
Minister of Advanced Education and Literacy
Room 162, Legislative Building
Winnipeg MB R3C 0V8

Dear Minister,

I am pleased to present the Annual Report of Manitoba Advanced Education and Literacy (MAEL) for the period April 1, 2012 to March 31, 2013.

In 2012/13, total funding in support of post-secondary education stood at \$627.4 million. According to the Department's most recent data (2011/12), 59,922 students were enrolled and 11,640 students graduated from public post-secondary programs at the combined certificate, diploma and degree levels. In the same year (2011/12), 1,356 learners graduated from adult learning programs and 9,007 learners were registered in high school courses at adult learning centres across the province. An additional 4,944 learners completed a total of 12,246 high school courses. These numbers represent our Department's significant vision – that all learners have opportunities to develop their potential in a global knowledge society and contribute to the economic, social and cultural life of Manitoba. As such, the Department continues to fund post-secondary programs and initiatives that provide Manitobans with the knowledge and skills needed to take hold of vital opportunities for personal advancement in work and career.

In 2012/13, Manitoba had the third lowest university tuition, second lowest college tuition and second lowest international student tuition in the country, based on average tuition. Moreover, in 2012/13, Manitoba Student Aid (MSA) invested over \$100 million in scholarships, bursaries and grants for over 10,000 students. The financial assistance provided by MSA supports the most disadvantaged learners by helping them in their pursuit of learning opportunities. Also in 2012/13 the income exemption on Manitoba Student Loans was increased so that Manitoba Student Aid clients are now able to earn more money during the school year without negatively affecting their aid eligibility, and the interest rate applied to Manitoba Student Loans was reduced to prime rate.

During the past year, Adult Learning and Literacy programs were delivered in a total of 71 communities across Manitoba. The Department remains committed to providing regional access to opportunities for advanced education and learning throughout Manitoba. In 2012/13, significant capital infrastructure initiatives were completed across the province, witnessing campus redevelopment at University College of the North in The Pas and Thompson, as well as in 10 Regional Centres across northern Manitoba. New opportunities have been created in our local mining industry through the grand opening of the Northern Manitoba Mining Academy in Flin Flon in 2012. In 2012/13, planning commenced on a significant new \$60 million Skilled Trades Training Centre for Red River College.

During my first full year as Deputy Minister of the Department I have travelled extensively in Manitoba seeing first-hand how our universities and colleges embody a truly provincial network of campuses, regional centres and learning sites. As we enter 2013/14, we are poised to build upon the achievements of 2012/13 while forging new pathways for learner success and opportunity. Together we have and will continue to make a difference regarding the progress, sustainability and growth of Manitoba.

Respectfully submitted,

Original Signed By:

Gerald Farthing, Ph.D.
Deputy Minister
Advanced Education and Literacy





Sous-ministre de l'Enseignement postsecondaire et de l'Alphabétisation
Bureau 156 Palais législatif
Winnipeg (Manitoba) R3C 0V8
CANADA

Madame Erin Selby
Ministre de l'Enseignement postsecondaire et de l'Alphabétisation
Palais législatif, bureau 162
Winnipeg (Manitoba) R3C 0V8

Madame la Ministre,

J'ai le privilège de vous présenter le rapport annuel du ministère de l'Enseignement postsecondaire et de l'Alphabétisation pour l'exercice allant du 1^{er} avril 2012 au 31 mars 2013.

En 2012 - 2013, le financement total accordé à l'enseignement postsecondaire se chiffrait à 627,4 millions de dollars. Selon les données les plus récentes du Ministère, celles de 2011 - 2012, 59 922 étudiants se sont inscrits à un programme d'un établissement d'enseignement postsecondaire public et 11 640 étudiants ont obtenu un certificat, un diplôme ou un grade d'un tel établissement. Au cours de cette même année, 2011 - 2012, 1 356 apprenants ont obtenu leur diplôme d'études secondaires dans le cadre d'un programme d'apprentissage pour adultes et 9 007 apprenants se sont inscrits à des cours de niveau secondaire d'un centre d'apprentissage pour adultes de la province tandis que 4 944 autres apprenants ont terminé un total de 12 246 cours du niveau secondaire. Ces chiffres illustrent bien la vision fondamentale du Ministère : d'offrir à tous les apprenants des possibilités de développer leur potentiel dans le cadre d'une société mondiale axée sur le savoir et de contribuer à la vie économique, sociale et culturelle du Manitoba. En conséquence, le Ministère continue à financer les programmes et les initiatives postsecondaires qui offrent aux Manitobains les connaissances et les compétences nécessaires pour pouvoir saisir les occasions clés qui permettent de faire progresser la vie professionnelle.

En 2012 - 2013, les frais de scolarité des universités, des collèges et des étudiants internationaux du Manitoba étaient, selon la moyenne canadienne des frais de scolarité, respectivement au troisième, au deuxième et au deuxième rang parmi les plus bas au pays. Au cours de la même année, l'Aide aux étudiants du Manitoba a investi plus de 100 millions de dollars en bourses d'études et en subventions qui ont été distribuées à plus de 10 000 étudiants. L'aide financière accordée par l'Aide aux étudiants du Manitoba appuie les étudiants les plus défavorisés en les soutenant dans leurs apprentissages et leur formation. Toujours en 2012 - 2013, l'exemption de revenu relative aux prêts étudiants du Manitoba a été relevée afin que les étudiants puissent gagner davantage d'argent au cours de l'année universitaire sans que cela ne nuise à leur admissibilité à recevoir de l'aide, et le taux d'intérêt sur les prêts étudiants du gouvernement du Manitoba a été abaissé au taux préférentiel.

Au cours de la dernière année, des programmes financés par la Direction de l'apprentissage et de l'alphabétisation pour adultes ont été offerts dans 71 collectivités du Manitoba. Le Ministère maintient clairement son engagement à offrir des possibilités de poursuivre des études postsecondaires et d'apprendre dans toutes les régions de la province. En 2012 - 2013, des projets d'immobilisations importants ont été réalisés partout au Manitoba, dont le réaménagement des campus du Collège universitaire du Nord à The Pas et à Thompson, ainsi que de 10 centres régionaux du nord du Manitoba. De nouvelles possibilités ont vu le jour au sein de l'industrie minière manitobaine grâce à l'inauguration de la Northern Manitoba Mining Academy à Flin Flon en 2012. En 2012 - 2013 également, la planification d'un important nouveau centre de formation pour les métiers spécialisés de 60 millions de dollars pour le Red River College a été entamée.

En ce début d'année 2013 - 2014, nous sommes prêts à consolider les réalisations de 2012 - 2013, tout en ouvrant de nouveaux sentiers qui mènent l'apprenant à la réussite et lui offre des possibilités. Ensemble, nous avons contribué au progrès, à la viabilité et à la croissance du Manitoba et continuerons à le faire.

C'est avec tous mes respects, Madame la Ministre, que je vous sou mets le présent rapport.

Le sous-ministre de l'Enseignement postsecondaire
et de l'Alphabétisation,

Original signé par:

Gerald Farthing



Table of Contents

TITLE	PAGE
Preface	
Report Structure	1
Mandate	1
Mission	1
Responsibilities	2
Programming and Services Overview	2
Organization Chart	6
PART A – OPERATING EXPENSES	
Administration and Finance	
Minister’s Salary	9
Executive Support	9
Corporate Services	9
International Education	11
Administration and Finance	13
Support for Universities and Colleges	
Council on Post-Secondary Education	15
University Operating Grants	16
Post-Secondary Strategic Initiatives Fund	16
College Grants	16
College Expansion Initiative	16
Access Program	17
Advanced Education and Training Assistance	18
Manitoba Student Aid	19
Adult Learning and Literacy	25
Capital Grants	29
Costs Related to Capital Assets	31
PART B – CAPITAL INVESTMENT	
Capital Investment	35
Financial Information	
Reconciliation Statement.....	39
Expenditure Summary	40
Revenue Summary.....	47
Five Year Expenditure and Staffing Summary	49
Performance Reporting	52
The Public Interest Disclosure (Whistleblower Protection) Act	59

Appendices

Table

1. Student Aid Program Awards..... 63

Preface

Report Structure

This report meets the annual reporting requirements for the Manitoba government and contains the Department's financial information for the fiscal year ending March 31, 2012. It includes expenditure and revenue variance explanations, and a five-year adjusted historical table of staffing and expenditures.

Mandate

Manitoba Advanced Education and Literacy (AEL) sets priorities and allocates funds for the government's investment in post-secondary education, literacy, adult learning and student financial aid.

AEL works with school divisions, colleges, a university college, universities, other departments, other provincial/territorial governments, the federal government and other private and public education and training organizations. The goal is to support high quality adult learning and post-secondary education that meets the needs of all Manitobans.

AEL is responsible for the overall legislative and regulatory structure for post-secondary and adult education. It also provides policy direction under these acts:

- *The Adult Learning Centres Act*
- *The Adult Literacy Act*
- *The Advanced Education Administration Act*
- *The Brandon University Act*
- *The Colleges Act*
- *The Université de Saint-Boniface Act*
- *The Council on Post-Secondary Education Act*
- *The Degree Granting Act*
- *The Private Vocational Institutions Act*
- *The Student Aid Act*
- *The University College of the North Act*
- *The University of Manitoba Act*
- *The University of Winnipeg Act*

Mission

Together with our partners and stakeholders, AEL's mission, with respect to post-secondary education, adult learning and literacy, is to:

- provide Manitobans with relevant, affordable, accessible and high quality learning opportunities;
- provide financial and other assistance to enable Manitobans to overcome barriers to learning;
- support seamless and coherent links across the learning systems;
- support increased adult literacy skills in the province through an Adult Literacy Strategy;
- provide leadership and facilitate the contribution of the learning systems to Manitoba's economic and social goals.

AEL adheres to these values:

- quality

- inclusiveness
- innovation
- collaboration

Responsibilities

AEL's primary responsibility is to manage high-quality post-secondary and adult learning. It emphasizes improved student performance, clarifying roles within the education systems and sharing new information.

The overall responsibilities of the Minister include:

- set strategic direction for post-secondary and adult learning and provide legislative and regulatory support for the strategy
- provide leadership and support for reform in post-secondary and adult learning institutions and other organizations
- set priorities and allocate funds for post-secondary and adult learning providers and financial aid for students
- work with colleges, universities and other education and training organizations to ensure access to quality post-secondary and adult education for all Manitobans
- co-ordinate and promote international education opportunities through Manitoba's international education strategy
- lead the development, implementation and evaluation of an adult literacy strategy for Manitoba
- represent the Manitoba government in meetings and negotiations with the federal and other governments and public and private sector organizations on post-secondary education, adult learning and education finance
- support effective links with other post-secondary education and adult learning organizations
- lead and support the contributions of adult learning and post-secondary organizations to Manitoba's economic and social goals

Programming and Services Overview

For the year ending March 31, 2012, AEL's programs and services were budgeted under six main appropriations: Administration and Finance, Support for Universities and Colleges, Manitoba Student Aid, Adult Learning and Literacy, Capital Grants and Costs Related to Capital Assets.

Manitoba's commitment to adult learning and post-secondary education includes:

- funding of seven public post-secondary institutions (universities and colleges)
- funding literacy programs
- funding adult learning centres
- providing student aid

I Post-Secondary Education

Manitoba's Council on Post-secondary Education (COPSE) plans and co-ordinates a post-secondary education system that promotes excellence and accessibility. It acts as an intermediary between the post-secondary institutions and the Manitoba government. COPSE reviews and approves university and college programs, advises the Manitoba government on policy, and promotes fiscal responsibility and accountability in the post-secondary education system.

The Council's mandate is “. . . to plan and co-ordinate the development of a post-secondary education system in the province that promotes excellence in and accessibility to education, supports the co-ordination and integration of services and facilities and promotes fiscal responsibility.”

COPSE allocates funds to Manitoba's seven public post-secondary institutions:

- University of Manitoba
- University of Winnipeg
- Brandon University
- Red River College
- Assiniboine Community College
- University College of the North
- Université de Saint-Boniface (including École technique et professionnelle)

COPSE also provides grants to:

- Canadian Mennonite University
- some private religious institutions
 - Steinbach Bible College
 - Providence University College and Seminary
 - William and Catherine Booth University College.

In 2012/13, there were 32,000 full-time students and 25,000 part-time students at the universities and University College of the North.

Community college full-time enrolment for 2011/12 was 17,300 students. Part-time enrolment was 29,900. Enrolment numbers for 2012/13 will be available in fall 2013.

II Manitoba Student Aid

Manitoba Student Aid (MSA) provides supplemental financing to students who might not be able to afford a post-secondary education on their own. MSA offers a variety of loans, grants and bursaries as well as other targeted support, through their own programming and by administering the Canada Student Loans Program.

MSA is governed by the *Student Aid Act*, which outlines the accountabilities for MSA programs, as well as establishes the key principals of affordability and accessibility for post-secondary education in Manitoba.

MSA support is available to qualifying Manitoba residents studying both inside and outside of the province at designated institutions. Students are individually assessed to determine their financial need as well as their eligibility for the various supports provided by MSA.

In 2012/13, Manitoba Student Aid had the authority to loan up to \$35.0 million in Manitoba Student Loans and another \$30.8 million was budgeted for bursaries and grants. Approximately 13,500 applications for Manitoba Student Aid were processed in 2012/13.

MSA also administers *The Private Vocational Institutions Act* and Regulations, through the Private Vocational Institutions (PVI) Office. The PVI Office provides consumer protection by registering PVIs in the province and monitoring institutions for compliance.

III International Education

The International Education Branch (IEB) was established in 2000 to co-ordinate international education activities across government departments: Education; Advanced Education and Literacy; Family Services and Labour; Immigration and Multiculturalism; and Entrepreneurship, Training and Trade. The branch also helps Manitoba's education institutions increase study opportunities for international students. It promotes Manitoba as a provider of high quality, affordable education and training.

IEB supports the vision contained in *Reaching Beyond Our Borders – The Framework for Manitoba's International Activities*, and has developed an International Education Strategy for the Manitoba government. The strategy's goal is to:

- promote global awareness about the competencies of Manitoba students and teachers
- increase the cross-cultural exposure of Manitobans
- maximize the benefits of international education to the Manitoba economy
- bring an international focus to teaching and learning in all aspects of education throughout Manitoba
- raise international recognition of Manitoba as an excellent source of high quality, affordable education and training

IV Adult Learning and Literacy

Adult Learning and Literacy (ALL) funds agencies that provide adult literacy programs, through the Manitoba Adult Literacy Program (MALP). The programs help adults improve literacy to get jobs and qualify for further education and training. ALL also registers and funds adult learning centres that help adult students obtain a Mature Student High School Diploma, improve job prospects and qualify for post-secondary education.

Adult literacy programs and adult learning centres provide tuition-free programs so adults can gain the literacy levels and high school credits needed to get further education and training. These programs enable adults to develop skills for full participation in the labour force. Almost 40% of program participants are employed full or part time. Over \$20.3 million was provided for adult literacy and adult learning centre programs in 2012/13. There are 43 registered adult learning centres in Manitoba and 36 MALP funded agencies offering adult literacy programs.

ALL advances the Adult Literacy Strategy to address the need for higher adult literacy levels in Manitoba. The strategy supports several global objectives:

- create and sustain a skilled and adaptable workforce
- provide Manitobans with literacy skills to achieve their economic, educational and personal goals
- increase civic participation
- enhance health and social well-being

Adult Learning and Literacy administers *The Adult Learning Centres Act* and General Regulation and *The Adult Literacy Act* and Adult Literacy Regulation.

ALL also administers the GED Testing Service in Manitoba.

V Corporate Initiatives

Two initiatives have shared mandates and staff from Manitoba Education and Advanced Education and Literacy: Aboriginal Education and Technical Vocational Initiative (TVI). TVI is also a joint initiative with Manitoba Entrepreneurship, Training and Trade. Manitoba Education and AEL also share the support of Financial and Administrative Services, including Systems and Technology Services.

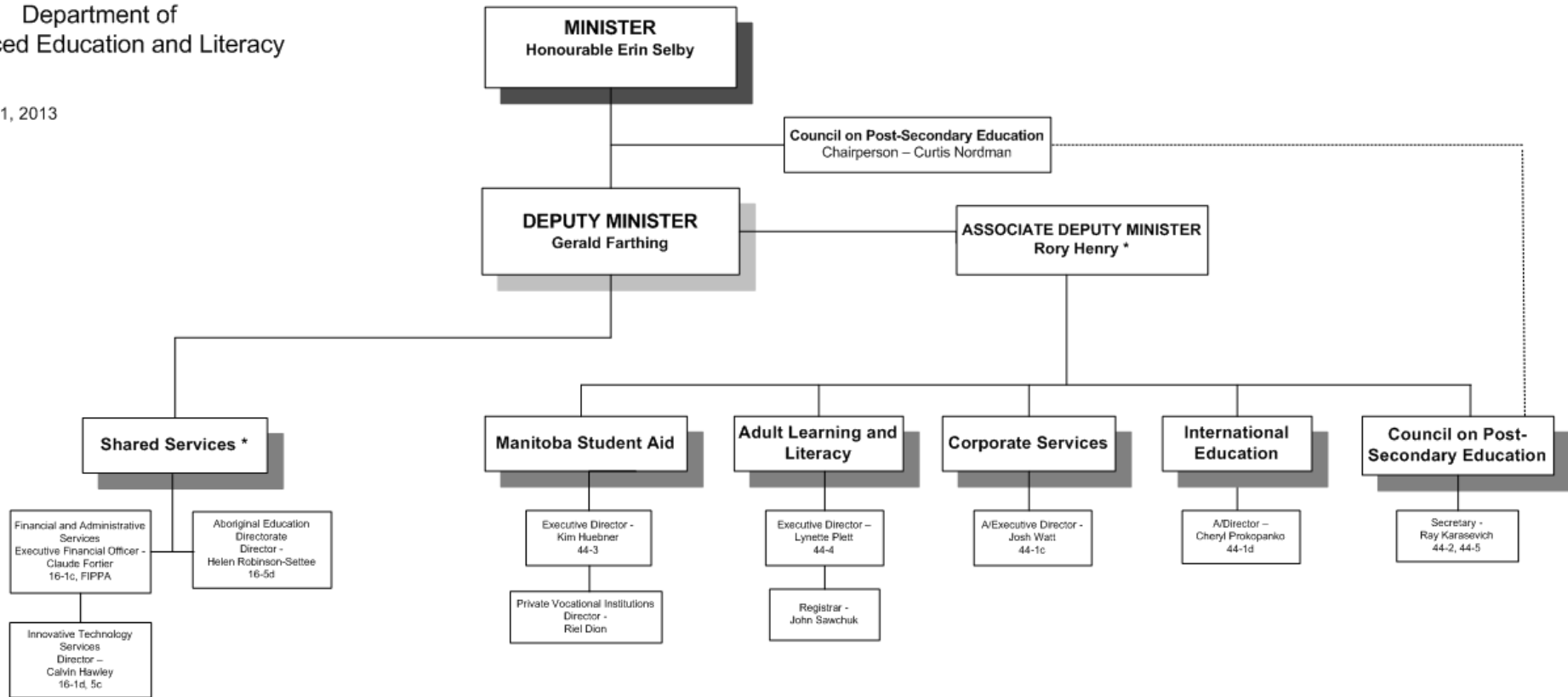
Aboriginal Education

The mandate of the Aboriginal Education Directorate (AED) is to provide leadership and co-ordination for departmental initiatives within Aboriginal education and training. AED's objectives is: to ensure an integrated approach to Aboriginal education and training within Manitoba Education, Manitoba Advanced Education and Literacy (MAEL), and in collaboration with the departments of Aboriginal and Northern Affairs (MANA) and Entrepreneurship, Training and Trade (METT). This includes promoting the removal of systemic barriers to Aboriginal student success, and participating in and ensuring linkages and collaboration with inter-sectoral research and policy initiatives related to Aboriginal education and training.

AED co-ordinates the development and implementation of the Aboriginal Education and Employment Action Plan and provides support and leadership to all branches and units within Education, MAEL, MANA and METT on matters as they relate to Aboriginal education and training.

Department of
Advanced Education and Literacy

March 31, 2013



* Provides services to Education and Advanced Education and Literacy

PART A – OPERATING EXPENSES

Administration and Finance

The Administration and Finance Division provides for the executive planning and management of departmental policies and programs. Administrative support is provided through Manitoba Education in the areas of financial and administrative services, systems and technology services and initiatives related to Aboriginal education and training.

Executive Support

This line provides the additional compensation to which individuals appointed to the Executive Council are entitled.

The Minister's and Deputy Minister's office provide leadership to Manitoba's education systems. They ensure high quality and equitability in training and education programs, as well as support services. Administrative leadership is also provided to the Department to co-ordinate human and financial resources.

1 (a) Minister's Salary

Expenditures by Sub-Appropriation	Actual 2012/13 \$000	Estimate 2012/13 FTE	Estimate 2012/13 \$000	Variance Over (Under) \$000	Expl. No.
Salaries and Employee Benefits	37	1.00	37	0	
Total Sub-Appropriation	37	1.00	37	0	

1 (b) Executive Support

Expenditures by Sub-Appropriation	Actual 2012/13 \$000	Estimate 2012/13 FTE	Estimate 2012/13 \$000	Variance Over (Under) \$000	Expl. No.
Salaries and Employee Benefits	330	6.00	353	(23)	
Other Expenditures	62		87	(25)	
Total Sub-Appropriation	392	6.00	440	(48)	

Corporate Services

The Corporate Services Branch supports policy development, planning and intergovernmental activity of MAEL. One of its key roles is co-ordinating across the Department, with other provincial departments and with other levels of government.

The Branch's goal is to use a co-ordinated corporate approach, by providing information and analysis, encouraging external and internal links and facilitating communication. It accomplishes this through:

- enabling Department-wide policy development and strategic planning
- providing analytical support on post-secondary education and adult learning
- helping the Department become more strategic and co-ordinated in how it develops, acquires, analyzes and uses data to support decision-making and reporting

- developing, co-ordinating and distributing information that supports adult learning and post-secondary education programs and activities
- working with other governments on education issues, such as providing support for the Council of Ministers of Education, Canada (CMEC) and the Canadian Education Statistics Council (CESC). (The CESC is a pan-Canadian partnership between the CMEC and Statistics Canada on education data and research.)
- liaising with other provincial departments on education issues

Policy Development

Activities in 2012/13 included leadership and support for developing policy on:

- data, information and knowledge management
- other Department policy priorities such as Aboriginal, adult and international education
- the Provincial ALL Aboard Strategy

Strategic Planning

Activities in 2012/13 included support to Department senior managers in the following areas:

- co-ordinating links to government-wide planning and supporting links to resource requirements through the estimates process
- MAEL Department Plan 2010-2013
- MAEL Data Management Strategy
- Adult Literacy Strategy
- International Education Strategy

Intergovernmental Relations

The Branch continues to serve as the primary provincial liaison with CMEC. The Branch's responsibilities included support for the Minister and Deputy Minister related to Manitoba's engagement with CMEC.

- The Branch provides support for:
 - many pan-Canadian activities including education data, post-secondary capacity, literacy action plan, Aboriginal Education Action Plan and international education;
 - Canada's participation in international education conferences, meetings and activities; and
 - the further development of policy-based research across the provinces and territories.
- Branch staff prepare briefing material for the Minister and the Deputy Minister's participation in semi-annual meetings of CMEC and the Advisory Committee of Deputy Ministers of Education (ACDME).
- Staff represent Manitoba (adult learning and post-secondary education) on the Strategic Management Committee of the Canadian Education Statistics Council.

Analysis/Research

Activities in 2012/13 included the following:

- The Branch prepared summaries and analyses of provincial and federal throne and budget speeches, highlighting the implications for MAEL.
- Throughout the year, the Branch prepared and/or contributed to a number of analytical documents related to various Department initiatives and priorities. These included:
 - Aboriginal Education
 - Academic credential recognition
 - Education policy links for data and information management

Sustainable Development

The Branch works to integrate sustainable development principles and guidelines into its regular activities. Corporate Services Branch liaises with Manitoba Education on the implications of Education for Sustainable Development in Manitoba and on a pan-Canadian basis.

1 (c) Corporate Services

Expenditures by Sub-Appropriation	Actual 2012/13 \$000	Estimate 2012/13 FTE \$000	Variance Over (Under) \$000	Expl. No.
Salaries and Employee Benefits	298	4.00	330	(32)
Other Expenditures	105		136	(31)
Total Sub-Appropriation	403	4.00	466	(63)

International Education

The International Education Branch (IEB) serves as a first-contact for international education matters. It develops international education policy and responds to inquiries and requests from international students, institutional partners and the general public. IEB also helps co-ordinate student recruitment initiatives, provides marketing assistance and helps develop partnership strategies for the export of education services and products from Kindergarten to post-secondary.

International student enrolment has grown year after year, despite a highly competitive international environment. The estimated economic impact on Manitoba from international students is more than \$153 million annually¹.

Highlights for 2012/13

In January 2009, Manitoba announced its *International Education Strategy*, outlining the government's role in helping institutions and citizens succeed in the international education marketplace. The Strategy has helped to guide the IEB in:

- recruiting and supporting international students coming to Manitoba
- exporting Manitoba educational expertise internationally by securing projects and contracts
- establishing offshore education programs/collaborations utilizing Manitoba curriculum and teachers/professors
- managing international mobility of Manitoba students, teachers, faculty and other educational staff
- bringing an international focus to teaching and learning in Manitoba classrooms.

Marketing and Promotions

IEB continues to promote Manitoba as a provider of affordable and high-quality education. Its website offers user-friendly services, including news, events and travel applications. The site not only targets international students, but also provides information on international education opportunities for Canadian students, faculty, international education administrators and the public.

¹ Department of Foreign Affairs and International Trade's report on the Economic Impact of International Education in Canada, May 2012 update: http://www.international.gc.ca/education/assets/pdfs/economic_impact_en.pdf

The IEB created new marketing brochures in various languages (English, French, Mandarin, Portuguese and Spanish) aimed at enhancing Manitoba's presence in target international markets.

In 2012/13, IEB co-ordinated missions to India (April 2012 and January 2013), Brazil, China and Mexico. Of note, the IEB also supported a mission of the Minister to Brazil, which resulted in 89 students coming to Manitoba under the marquee Science Without Borders program. Missions to several destinations including Brazil, China and Mexico are being planned for 2013/14.

Affiliated Schools

IEB analyzes proposals to establish overseas Manitoba-affiliated schools that employ Manitoba teachers to teach the Manitoba curriculum, and Manitoba principals who supervise the accumulation of credits resulting in a Manitoba Grade 12 diploma for successful overseas students. Manitoba has established six affiliated schools: two in China and one each in Egypt, Ghana, South Korea and Thailand. In 2011/12, IEB renegotiated Memorandums of Understanding with four of these schools and continues to review new proposals for affiliated schools on a regular basis.

Collaboration on International Education

IEB continues to oversee the Off-Campus Work Permit program, which allows international students to work off-campus, in keeping with agreements with Citizenship and Immigration Canada (CIC) and Manitoba's public post-secondary institutions. The IEB is working with CIC on changes to the International Student Program, which is expected to reduce fraud and improve program integrity. The changes will improve information-sharing, data collection, communication within CIC and between CIC and provinces and territories (P/T). As well, the new regulations will limit the provision of study permits to international students attending designated institutions (foreign nationals attending institutions not on the list would enter Canada under a visitor visa).

As part of Manitoba's efforts to ensure that Manitoba education providers follow a Code of Practice and Conduct, as well as to comply with CIC's regulatory changes, IEB has provided drafting instructions for legislation (Bill 44). The *International Education Act* will provide the protocols for designating institutions as international education providers, as well as ensuring and enhancing the reputation of Manitoba as a study destination. The *Act* will be the first in Canada to codify international student protections.

Under the CMEC, Manitoba participates in discussions with provinces, territories and the federal government on co-ordinating pan-Canadian efforts to promote Canada as an international destination for education. IEB is the P/T co-chair of the Federal/Provincial/Territorial Working Group on Agents, and a member of other working groups - EduCanada Imagine Brand, the International Students Program, the International Education Week Committee, the P/T Overseas Schools and the International Education Strategy.

Capacity Building

IEB's efforts to build provincial capacity for international education continue. The Branch held meetings, presentations, and consultations with Manitoba education institutions to provide information on the international education field. Work on expanding institutional capacity continues through professional development sessions on gaining expertise in the field, such as a seminar provided on CIC Bill C35 in January. IEB supports the local Manitoba Council on International Education (MCIE) and continues to discuss policies on home stays and student recruitment agents.

Efforts to build international education capacity in Manitoba continue to succeed, as each year more institutions become involved in international programming and more international students come to

Manitoba. Over the last decade, Manitoba's international education system shows steady, year-over-year growth with a doubling in the numbers of international students (6,220 in 2011).

Sustainable Development

IEB's work in community economic development continues. The Branch established a formal sustainable development action plan, largely focused around administrative activities. The results showed a more efficient use of paper, a decrease in the use of disposable cups and cutlery, more electronic transmission and storage of documents and a greater use of local service providers, when practical.

1 (d) International Education

Expenditures by Sub-Appropriation	Actual 2012/13	Estimate 2012/13		Variance Over (Under)	Expl. No.
	\$000	FTE	\$000	\$000	
Salaries and Employee Benefits	200	2.00	179	21	
Other Expenditures	123		154	(31)	
Total Sub-Appropriation	323	2.00	333	(10)	

Administration and Finance

Manitoba Education provides administrative support in areas of financial and administrative services, systems and technology services and Aboriginal education and training.

1 (e) Administration and Finance

Expenditures by Sub-Appropriation	Actual 2012/13	Estimate 2012/13		Variance Over (Under)	Expl. No.
	\$000	FTE	\$000	\$000	
Salaries and Employee Benefits	577		577	0	
Other Expenditures	173		173	0	
Total Sub-Appropriation	750	0.00	750	0	

Support for Universities and Colleges

Council on Post-Secondary Education

The Council on Post-secondary Education (COPSE) approves new programs and allocates financial resources to Manitoba's public universities and community colleges. The Council also co-ordinates post-secondary programs and policy development. Specific details of activities are included in its annual report.

As stated in its legislation, COPSE's mandate is to:

- allocate financial resources to Manitoba's public universities, community colleges and private religious colleges
- plan and co-ordinate the development of a post-secondary education system that promotes excellence and accessibility
- support the co-ordination and integration of services and facilities
- promote fiscal responsibility

In 2012/13, the Council allocated \$454.1 million in grants to the University of Manitoba, the University of Winnipeg, Brandon University, Université de Saint-Boniface and the University College of the North. \$9.8 million of this amount was included under Capital Grants. The Council also allocated \$5.8 million in grants to the Canadian Mennonite University, Providence University College and Seminary, William and Catherine Booth University College and the Steinbach Bible College to support about 1,700 full-time equivalent qualifying students.

In 2012/13, the Council allocated \$92.4 million in grants to Red River College, Assiniboine Community College and the École technique et professionnelle, of which \$1.8 million was included under Capital Grants. The Council also provided \$42.8 million as part of the College Expansion Initiative.

In addition to operating and capital grants, the Council allocated \$0.1 million to stimulate change and reward innovative developments from the System Restructuring Envelope. In 2012/13, the Council allocated \$10.2 million in support to the Access program.

Sustainable Development

One of the Council Secretariat staff is a member of the Education for Sustainable Development Working Group. As well, the Council supports sustainable development activities by purchasing recycled paper, toner cartridges and other supplies. Other activities include duplex printing and copying (where possible), regular recycling of waste paper and teleconferencing of meetings, when possible.

2 (a) Council on Post-Secondary Education

Expenditures by Sub-Appropriation	Actual 2012/13 \$000	Estimate 2012/13 FTE	Estimate 2012/13 \$000	Variance Over (Under) \$000	Expl. No.
Salaries and Employee Benefits	1,089	14.00	1,089	0	
Other Expenditures	703		321	382	1
Total Sub-Appropriation	1,792	14.00	1,410	382	

1. Over expenditure is mainly the result of costs to prepare adapted curriculum materials for visually impaired students at universities, budgeted in University Operating Grants but paid from Other Expenditures.

2 (b) University Operating Grants

Expenditures by Sub-Appropriation	Actual 2012/13	Estimate 2012/13		Variance Over (Under)	Expl. No.
	\$000	FTE	\$000	\$000	
Operating Grants	463,384		466,179	(2,795)	1
Total Sub-Appropriation	463,384	0.00	466,179	(2,795)	

1. Under expenditure mainly reflects reductions in principal and interest costs due to delays in capital projects at universities, reductions in grant funding for Campus Manitoba at the University of Manitoba, and for Inter-University Services at the University College of the North; variance also reflects costs to prepare adapted curriculum materials for visually impaired students at universities, budgeted in University Operating Grants but paid from Other Expenditures, partly offset by costs for the Internationally Educated Engineers Qualification (IEEQ program) and funding for the Manitoba Institute of Policy Research.

2 (c) Post-Secondary Strategic Initiatives Fund

Expenditures by Sub-Appropriation	Actual 2012/13	Estimate 2012/13		Variance Over (Under)	Expl. No.
	\$000	FTE	\$000	\$000	
Grants	100		500	(400)	1
Total Sub-Appropriation	100	0.00	500	(400)	

1. Under expenditure reflects a reduction in grant funding for system restructuring projects.

2 (d) College Grants

Expenditures by Sub-Appropriation	Actual 2012/13	Estimate 2012/13		Variance Over (Under)	Expl. No.
	\$000	FTE	\$000	\$000	
Operating Grants	90,566		90,575	(9)	
Total Sub-Appropriation	90,566	0.00	90,575	(9)	

College Expansion Initiative

The College Expansion Initiative (CEI) supports the growth of Manitoba's public college system by working collaboratively with the four public colleges and the Council on Post-Secondary Education.

CEI invests mainly in new education programs, although significant contributions have also been made to strategic infrastructure projects. CEI presents expansion proposals to the Council on Post-Secondary Education on behalf of the colleges. The Council grants funding approval for all expansion activity.

In 2012/13, CEI invested an additional \$2.3 million in the college system. The investment resulted in the creation of new and expanded programs that meet labour market needs. The following goals guide CEI in determining the direction of new investments:

- addressing labour market needs
- meeting the needs of under-served groups
- enhancing youth participation
- improving student success
- encouraging innovation in the college system
- stimulating workplace-based programming

2 (e) College Expansion Initiative

Expenditures by Sub-Appropriation	Actual 2012/13	Estimate 2012/13		Variance Over (Under)	Expl. No.
	\$000	FTE	\$000	\$000	
Grants	42,748		44,332	(1,584)	1
Total Sub-Appropriation	42,748	0.00	44,332	(1,584)	

1. Under expenditure mainly reflects a delay in principal and interest costs due to delays in capital projects at Red River College (RRC). Variance also reflects a reduction in RRC funding for the Rehabilitation Aide Diploma due to program delays, and a reduction in funding for the Technical Vocational Initiative (TVI).

Access Program

The Access program provides post-secondary educational opportunities to Manitoba residents from under-served groups. The program is aimed at improving their access to, and success in, Manitoba's public post-secondary institutions.

COPSE provides co-ordination and administrative support for the Access program. The program and its services are offered at University of Manitoba, Brandon University, University of Winnipeg, Red River College and University College of the North. Manitoba Student Aid provides financial support to some of the students enrolled in these programs.

The Access program provides funding to these institutions for special programs targeting individuals who've faced barriers to post-secondary education. As of September 2012, enrolments for 2012/13 were 688. Individuals served by these special programs include Aboriginal, people with disabilities, single parents and immigrant and refugee students.

2 (f) Access Program

Expenditures by Sub-Appropriation	Actual 2012/13	Estimate 2012/13		Variance Over (Under)	Expl. No.
	\$000	FTE	\$000	\$000	
Grants	10,191		10,276	(85)	
Total Sub-Appropriation	10,191	0.00	10,276	(85)	

Advanced Education and Training Assistance

The Council on Post-Secondary Education provides grant funding in support of Inter-provincial Training Agreements. These grants enable Manitoba students to study elsewhere in professions where provincial demand has been identified and training is not available in Manitoba. At present, programs being funded include Veterinary Medicine at the University of Saskatchewan, Optometry at the University of Waterloo and Nuclear Medicine at the Southern Alberta Institute of Technology.

2 (g) Advanced Education and Training Assistance

Expenditures by Sub-Appropriation	Actual 2012/13 \$000	Estimate 2012/13 FTE \$000	Variance Over (Under) \$000	Expl. No.
Grants	5,708	6,042	(334)	
Total Sub-Appropriation	5,708	0.00	6,042	(334)

Manitoba Student Aid

The Manitoba Student Aid Branch, through the administration of the Canada Student Loans Program (CSLP) and the Manitoba Student Aid Program, provides financial assistance for educational purposes to post-secondary students whose finances limit their educational opportunities.

Manitoba Student Aid (MSA) is a needs-based program. It is designed to add to, not replace, the resources available to post-secondary students. The cost of a post-secondary education is considered to be the primary responsibility of students and their immediate families. Assistance is based on an assessment comparing the applicant's allowable educational costs to their available resources.

The Student Aid Act, enacted in 2001, requires a high degree of accountability for the Student Aid Program, and ensures that the key principles of accessibility and affordability are a central part of the post-secondary education system in Manitoba.

New Initiatives

Over the past year, in order to promote affordable post-secondary education in Manitoba, the interest rate on Manitoba Student Loans has been reduced to prime rate. In addition, the in-school earning exemption for students has been increased to \$100 from \$50 per week. This means that students may now earn twice as much as before if working while in school, without it reducing their loan eligibility.

Loans, Grants, Bursaries and Awards

Student Loans of up to \$350 per week are available through a 60/40 federal/provincial cost-sharing arrangement. The maximum Canada Student Loan (CSL) is \$210 per week of study and the maximum Manitoba Student Loan (MSL) is \$140 per week of study. One common assessment process determines both CSL and MSL awards and any non-repayable assistance for which students are eligible. This makes it possible for students to have a complete financial picture of the resources available to them.

The Manitoba Bursary helps qualifying Manitoba students studying at the college or undergraduate level in Canada, as well as Manitoba students studying at private vocational institutions in Manitoba. The mandate of the Manitoba Bursary is to help provide affordable post-secondary education by paying down Manitoba Student Loan debt. In 2012/13, approximately 3,700 students will receive a Manitoba Bursary.

Other Manitoba Bursary sub-programs have been developed to make post-secondary education accessible and affordable for targeted groups of students. These sub-programs include the Rural/Northern Bursary and the Student Success Grant.

The Rural/Northern Bursary assists students who relocate or commute from northern and rural communities to attend school. In 2012/13, 437 students received a Rural/Northern Bursary for a total of \$757,950.

The Student Success Grant was designed to help students whose financial need exceeded the maximum funding available from the Manitoba and Canada Student Loan programs. In 2012/13, 246 students received Student Success Grants for a total of \$490,848.

Canada Student Grants, introduced in 2009/10, are administered by MSA and provide non-repayable support to qualifying students. MSA manages the following Canada Student Grant programs on behalf of the federal government:

- Persons with Permanent Disabilities, \$2,000;
- Services and Equipment for Persons with Permanent Disabilities, up to \$8,000;
- Persons from Low-income Families, \$250 per month of study;
- Persons from Middle-income Families, \$100 per month of study;
- Persons with Dependents, \$200 per month of study, per child under age 12.

Part-time students are also eligible for some Canada Student Grants. Part-time students receive up to \$1,200 per school year; while Part-time Students with Dependents are eligible for up to \$60 per week of study.

MSA also manages targeted programs such as the student-funding component of the ACCESS Bursary and the Prince of Wales/Princess Anne Award for Aboriginal students.

Additional Student Financial Assistance Programs

In addition to providing grants, bursaries and awards, MSA is responsible for funding or managing programs not directly related to traditional student aid.

In 2012/13, MSA continued to support Graduate Scholarships that support research-based graduate studies attracting and retaining the highest quality students, within and outside the province. This scholarship provides Doctoral students with \$7,500 per year, for up to four years. This is intended to supplement the University of Manitoba Graduate Fellowships of \$16,000 per year. The Scholarship program also provides Masters students with \$15,000 per year for up to two years. In 2012/13, the program assisted 112 Masters students and 77 Doctoral students.

Each year, through the Manitoba Scholarship and Bursary Initiative, MSA provides \$4.8 million in grants to match private donations made toward scholarships and bursaries at Manitoba's public post-secondary institutions.

Since 2000, MSA has supported the Fly Higher Aboriginal Education Awards. These awards are funded through the Manitoba Scholarship and Bursary Initiative in partnership with the Business Council of Manitoba (BCM) and the governments of Canada and Manitoba. Up to \$150,000 per year, raised by BCM through private donations from its members, is matched by both the federal and provincial governments totalling \$450,000. Any funds raised over awarded amounts is held in endowment. This partnership aims to boost Aboriginal participation in post-secondary education and increase opportunities for employment.

MSA manages the Educational Assistance Option of the Medical Student/Resident Financial Assistance Program (MSRFAP) on behalf of Manitoba Health. This option provides financial assistance, in the form of a conditional return of service grant, to students and residents studying medicine in Manitoba, as well as Manitoba students who receive their medical education in French, at the University of Ottawa. Eligibility extends to Manitoba's medical doctors, who have graduated from the University of Manitoba and are now taking approved, post-graduate medical programs at other universities. Once they have completed their training, the program participants commit to working in Manitoba for a specific period of time, for each grant they receive, or repay the money with interest. Awards of \$12,000 to \$50,000 are offered under the MSRFAP and can vary based on area of specialization or the location of the return of service. In 2012/13, 243 students received a total of \$4.72 million in conditional grants.

Through the Aboriginal Medical Student Financial Assistance Program, MSA provides \$7,000 to Aboriginal medical students for each year of undergraduate training. The grant for year one must be taken in order to access grants in years two, three or four. The return-of-service commitment for each grant is six months. In 2012/13, 22 students received a total of \$154,000 in conditional grants.

MSA, in co-operation with the MB4Youth Division of Manitoba Children and Youth Opportunities, manages the Youth Transition: From Work to Post-secondary Education bursary program. In 2012/13, 6 students completed their work experience and each received a \$3,000 bursary towards post-secondary education.

Designation

Designation is the process by which institutions obtain the recognition that allows their students to be eligible to apply for government student loans. As student loans are supported by taxpayers, institutions are now held accountable for the management of these funds and for improving students' success through reviews of graduation and repayment rates.

In the fall of 2004, provincial/territorial governments, and the federal government, established the Pan-Canadian Designation Framework. This national strategy strengthens student consumer protection, improves student loan repayment rates and helps students make informed choices about post-secondary education.

To ensure compliance with the national strategy, the Manitoba government maintains Memoranda of Understanding (MOU) with all of the designated educational institutions located in Manitoba. In 2012/13, Manitoba Student Aid performed 9 compliance reviews or administrative audits. As at March 31, 2013, Manitoba has designated 61 institutions in the province and more than 1,000 institutions throughout the world.

Direct Service Delivery

MSA has an interactive online application and website to provide students greater access 24/7. The online application MySAO (My Student Aid Online) uses technology to interact with applicants, determine the information required and guide them to complete their application. Students applying online are mailed a Notice of Assistance letter, which indicates the approximate amount of financial assistance they will receive (CSL and MSL awards). Roughly 90% of applications were submitted through the internet in 2012/13. The MySAO application process contributes to MSA's sustainable development activities by decreasing the processing of hard copy documents. With the online program, students can find out their MSL account balance, identify any outstanding information required to process the application, and update their application with revised information.

For the 2012/13 program year, MSA processed 13,500 applications for CSLs and MSLs. MSA also processed 600 applications for Part-time CSLs. Approximately 48,500 requests for information and assistance were handled over the telephone. Services were also provided in-person to an additional 20,000 current and potential applicants. The Exceptional Review (Appeal) Committee reviewed 350 appeals.

MSA's Student Advisors provide one-on-one interaction with students, including those with high financial or other special needs. Advisors also promote program awareness, help reduce student loan default rates and liaise with Manitoba post-secondary institutions. As well, the Aboriginal Liaison Officer partners and networks with the Aboriginal community about post-secondary issues like access and affordability. This work involves interaction with students and administrators at participating public universities and colleges, including those in the ACCESS program.

The Loan Services Unit manages the MSL portfolio including the disbursement and collection of direct-financed loans. The Loan Services Unit also manages the administration of the Repayment Assistance Plan. This plan supports borrowers having difficulty in meeting their repayment obligations, and minimizes overall government risk and loan defaults. MSA also continues to manage the portfolio of MSLs issued prior to August 2001, including the administration of interest subsidy, provision for loss and risk premium payments.

Sustainable Development

MSA supports sustainable development by purchasing recycled paper, toner cartridges and other environment-friendly supplies. Where possible, the use of duplex copying is encouraged. In addition, MSA encourages students to apply online using MySAO, which reduces paper use.

Private Vocational Institutions Unit

The Private Vocational Institutions (PVI) Office administers *The Private Vocational Institutions Act*, and its attendant regulation, Manitoba Regulation 237/02. The office provides policy direction to the operators of private vocational institutions to ensure compliance with the *Act* and Regulation. The PVI Unit operates based on the calendar year.

As of December 31, 2012, there were 45 Manitoba private vocational institutions registered – 30 of them had programming designated for the CSL and MSL programs.

There were 3,992 enrolments at Manitoba private vocational institutions in the 2012 calendar year. The Training Completion Fund – a pool of money used to help finance the completion of students' training should an institution go out of business – had approximately \$2.04 million held in trust at the end of 2012.

3 (a-b) Manitoba Student Aid

Expenditures by Sub-Appropriation	Actual	Estimate		Variance	Expl. No.
	2012/13 \$000	FTE	2012/13 \$000	Over (Under) \$000	
(a) Salaries and Employee Benefits	3,873	65.25	3,896	(23)	
(b) Other Expenditures	1,390		1,176	214	
Total Sub-Appropriation	5,263	65.25	5,072	191	

3 (c) Manitoba Bursaries and Funds

Expenditures by Sub-Appropriation	Actual 2012/13 \$000	Estimate 2012/13 FTE \$000	Variance Over (Under) \$000	Expl. No.
(1) Manitoba Bursary Fund	14,160	14,320	(160)	
(2) Manitoba Scholarship and Bursary Initiative	4,802	4,875	(73)	
(3) Medical Student/Resident Financial Assistance	4,751	4,361	390	
(4) Manitoba Graduate Scholarships	2,245	2,250	(5)	
(5) Loans and Bursaries	2,496	2,731	(235)	
(6) Aboriginal Medical Student Scholarship	154	168	(14)	
Total Sub-Appropriation	28,608	0.00	28,705	(97)

3 (d) Canada Grants and Funds

Expenditures by Sub-Appropriation	Actual 2012/13 \$000	Estimate 2012/13 FTE \$000	Variance Over (Under) \$000	Expl. No.
(1) Canada Millennium Scholarship Fund	0	0	0	
(2) Canada Student Grants	1,117	1,350	(233)	
(3) Transition Bursary	525	700	(175)	
Total Sub-Appropriation	1,642	0.00	2,050	(408)

3 (e) Student Loan Administration

Expenditures by Sub-Appropriation	Actual 2012/13 \$000	Estimate 2012/13 FTE \$000	Variance Over (Under) \$000	Expl. No.
Student Loan Administration	1,787	2,085	(298)	
Total Sub-Appropriation	1,787	0.00	2,085	(298)

3 (f) Recoverable from Health

Expenditures by Sub-Appropriation	Actual 2012/13 \$000	Estimate 2012/13 FTE \$000	Variance Over (Under) \$000	Expl. No.
Less: Recoverable from Health	(4,751)	(4,361)	(390)	
Total Sub-Appropriation	(4,751)	0.00	(4,361)	(390)

Adult Learning and Literacy

The objectives of Adult Learning and Literacy (ALL) are to:

- support adult programming and initiatives that allow Manitobans to improve their ability to understand and use printed information in daily activities at work, at home and in the community
- obtain high school credits that lead to high school diploma, post-secondary education and/or employment opportunities

A main objective is to develop the capacity within the province to respond to the needs of the non-sequential adult learner with flexible, effective and efficient programming. Three programs are available in Manitoba to meet these objectives:

- Adult Learning Centres (ALCs) Program
- Manitoba Adult Literacy Program (MALP)
- GED Testing Service

ALL is trying to improve the transition of adult learners from adult literacy programs (ALPs) to ALCs, and from ALCs to post-secondary education. ALL staff provide service to the entire province.

The Adult Literacy Strategy

On January 1, 2009, *The Adult Literacy Act* came into force. The *Act*, which is the first in Canada, commits the government to develop a provincial Adult Literacy Strategy and formalizes the Manitoba Adult Literacy Program (MALP) as a component of the Strategy.

ALL is leading its development and implementation in collaboration with other ministries and government agencies, literacy practitioners, immigrant organizations, Aboriginal organizations and communities and other non-government organizations. The Strategy will contribute to these global objectives:

- to provide Manitobans with literacy skills to achieve their economic, educational and personal literacy-related goals
- to create and sustain a skilled and adaptable workforce
- to increase civic participation
- to enhance health and social well-being

The Strategy framework focuses on five key areas:

- The Manitoba Adult Literacy Program
- Adult Learning Centres
- Workforce development and employment
- Adult learning and literacy supports for English as an Additional language and Immigrant learners
- Aboriginal education

Manitoba Adult Literacy Program (MALP)

In 2012/13, ALL provided MALP grants to 36 agencies to provide adult literacy programming. Year-end statistics for 2012/13 are not available until the fall of 2013. However, year-end statistics for 2011/12 indicate that:

- 2,508 individuals participated in adult literacy programming
- 37% were male and 63% female
- 22% were in the 18-25 age group, 43% in the 26-40 age group, 25% were in the 41-55 age group, 9% were over 55, and 1% were under 18

- 38% identified themselves as Aboriginal learners (First Nation, Metis and Other Aboriginal)
- 29% said English was not their first language
- upon registration in the adult literacy program, 30% of learners were at Stage level 1, 43% were at Stage level 2, and 27% were at Stage level 3

Adult Learning Centres (ALCs) Program

The Adult Learning Centres Act legislates a registration and governance process for ALCs and provides them with a framework for educational and fiscal accountability.

In the 2012/13 program year, 42 ALCs were registered, with 39 receiving funding from Adult Learning and Literacy (ALL). Three ALCs were registered by AEL and funded from other sources. These are: Brokenhead Adult Learning Centre, Peguis Adult Education Learning Centre, and Waywayseecappo Adult Learning Centre.

Year-end statistics for the 2012/13 school year will be available in the fall of 2013. Statistics for the 2011/12 school year indicate that:

- 9,007 learners completed 12,246 courses for high school credit
- 1,356 ALC learners graduated with a secondary (high school) diploma
- 530 graduates self-declared as Aboriginal (First Nation, Metis and Other Aboriginal).

Recognition of Prior Learning (RPL) is a significant service to learners at ALCs. The majority of ALC programs have at least one staff member who has completed the RPL Foundation training offered by ALL.

ALCs have established RPL Advisory and RPL Assessment Services to help adult students receive credits for their formal and informal learning. In 2012/13, ALCs granted 334 credits through RPL, with 144 students graduating with RPL credits.

High school graduates may take up to four credit courses tuition free at ALCs. These courses are taken as preparation for post-secondary education, training or employment. In 2012/13, adults registered for 2,674 post-diploma credits. ALL is also responsible for registering dual-credit courses (post-secondary and high school) for use in ALCs.

GED Testing Service

ALL administers the GED Testing Service in Manitoba. GED operations are located in ALL's Brandon office. Between January 1, 2012 and December 31, 2012, 259 individuals wrote the GED tests, with 144 obtaining their GED certificate.

Support Activities

ALL staff provide professional development workshops and networking opportunities for ALC and ALP educators and other adult education stakeholders. They also help develop and obtain materials appropriate for adult learners.

Staff assisted the Premier with the Council of the Federation (COF) Literacy Award (Manitoba). ALL also helped community organizations, ALPs, ALCs, the Adult Secondary Education Council and Literacy Partners of Manitoba raise awareness of adult learning and literacy.

Sustainable Development

ALL works hard to minimize its paper use, through buying only recycled paper, recycling all non-confidential documents, encouraging staff to avoid printing hard copies of documents and increasing the use of electronic data storage and file management – this includes developing and maintaining a branch website. The Branch's goal is to integrate sustainable development principles and guidelines into its regular activities on a continuous basis so they become an integral part of the Branch's activities.

4 (a-e) Adult Learning and Literacy

Expenditures by Sub-Appropriation	Actual 2012/13 \$000	Estimate 2012/13 FTE	\$000	Variance Over (Under) \$000	Expl. No.
(a) Salaries and Employee Benefits	918	12.00	995	(77)	
(b) Other Expenditures	214		342	(128)	
(c) Adult Learning Centres	17,610		17,766	(156)	
(d) Adult Literacy	2,758		2,506	252	
(e) Less: Recoverable from Canada- Manitoba Labour Market Agreement	(412)		(412)	0	
Total Sub-Appropriation	21,088	12.00	21,197	(109)	

Capital Grants

Funding from Capital Grants contribute to universities' and community colleges' capital expenses. More information on the grants may be found in the Council on Post-Secondary Education Annual Report.

5 (a-b) Capital Grants

Expenditures by Sub-Appropriation	Actual 2012/13 \$000	Estimate 2012/13 FTE \$000	Variance Over (Under) \$000	Expl. No.
(a) Universities	9,751		9,754	(3)
(b) Colleges	1,817		1,817	0
Total Sub-Appropriation	11,568	0.00	11,571	(3)

Costs Related to Capital Assets

This main appropriation provides for the costs related to capital assets.

6 (a-b) Costs Related to Capital Assets

Expenditures by Sub-Appropriation	Actual 2012/13 \$000	Estimate 2012/13 FTE \$000	Variance Over (Under) \$000	Expl. No.
(a) Amortization Expense	758	910	(152)	
(b) Interest Expense	764	636	128	
Total Sub-Appropriation	1,522	0.00 1,546	(24)	

PART B – CAPITAL INVESTMENT

Capital Investment

In 1999/2000, the Province established a new accounting policy for tangible capital assets, based on standards issued by the Canadian Institute of Chartered Accountants. These standards require that expenditures on tangible assets be amortized over the useful life of the asset. Recognizing amortization in this way allocates capital assets costs to the periods of service provided, and amortization is recorded as an expense in the statement of operations.

Tangible capital assets are those with a useful life extending beyond one year which are acquired, constructed or developed and held for use, not for resale. Tangible capital assets with a value less than the accepted capitalization limit will be expensed in the year of acquisition.

Expenditures by Sub-Appropriation	Actual	Estimate		Variance	Expl. No.
	2012/13 \$000	FTE	2012/13 \$000	Over (Under) \$000	
44.7 Capital Investment	1,230		1,348	(118)	
Total Sub-Appropriation	1,230	0.00	1,348	(118)	

Financial Information

Department of Advanced Education and Literacy

**Reconciliation Statement
(\$000s)**

DETAILS	2012/13 ESTIMATES
2012/13 Main Estimates	\$689,205
Main Estimates Authority transferred from:	NIL
2012/13 Estimate	\$689,205

Manitoba Advanced Education and Literacy

Expenditure Summary

For the fiscal year ended March 31, 2013, with comparative figures for the previous fiscal year (\$000s)

Estimate 2012/13	Appropriation	Actual 2012/13	Actual 2011/12	Increase (Decrease)	Explanation Number
Advanced Education and Literacy (44)					
	44-1	Administration and Finance			
37	(a)	Minister's Salary			
	(b)	Executive Support			
353		- Salaries and Employee Benefits			
87		- Other Expenditures			
	(c)	Corporate Services			
330		- Salaries and Employee Benefits			
136		- Other Expenditures			
	(d)	International Education			
179		- Salaries and Employee Benefits			
154		- Other Expenditures			
750	(e)	Administration and Finance			
2,026	Total 44-1	1,905	2,013	(108)	

Manitoba Advanced Education and Literacy

Expenditure Summary

For the fiscal year ended March 31, 2013, with comparative figures for the previous fiscal year (\$000s)

Estimate 2012/13	Appropriation	Actual 2012/13	Actual 2011/12	Increase (Decrease)	Explanation Number
	44-2 Support for Universities and Colleges				
	(a) Council on Post-Secondary Education				
1,089	- Salaries and Employee Benefits	1,089	1,055	34	
321	- Other Expenditures	703	781	(78)	
466,179	(b) University Operating Grants	463,384	438,862	24,522	1
500	(c) Post-Secondary Strategic Initiatives Fund	100	489	(389)	2
90,575	(d) College Grants	90,566	87,083	3,483	3
44,332	(e) College Expansion Initiative	42,748	40,791	1,957	4
10,276	(f) Access Program	10,191	9,840	351	
6,042	(g) Advanced Education and Training Assistance	5,708	5,634	74	
	(h) Stevenson Aviation Centre				
0	- Salaries and Employee Benefits	0	1,009	(1,009)	5
0	- Less: Recoverable from Red River College	0	(1,009)	1,009	5
619,314	Total 44-2	614,489	584,535	29,954	

**Manitoba Advanced Education and Literacy
Expenditure Summary**

For the fiscal year ended March 31, 2013, with comparative figures for the previous fiscal year (\$000s)

Estimate 2012/13	Appropriation	Actual 2012/13	Actual 2011/12	Increase (Decrease)	Explanation Number
	44-3 Manitoba Student Aid				
3,896	(a) Salaries and Employee Benefits	3,873	3,924	(51)	
1,176	(b) Other Expenditures	1,390	977	413	6
	(c) Manitoba Bursaries and Funds				
14,320	- Manitoba Bursary Fund	14,160	13,692	468	
4,875	- Manitoba Scholarship and Bursary Initiative	4,802	4,875	(73)	
4,361	- Medical Student/Resident Financial Assistance	4,751	5,244	(493)	7
2,250	- Manitoba Graduate Scholarships	2,245	2,250	(5)	
2,731	- Loans and Bursaries	2,496	2,539	(43)	
168	- Aboriginal Medical Student Scholarship	154	168	(14)	
	(d) Canada Grants and Funds				
0	- Canada Millennium Scholarship Fund	0	0	0	
1,350	- Canada Student Grants	1,117	1,044	73	
700	- Transition Bursary	525	1,276	(751)	8
2,085	(e) Student Loan Administration	1,787	2,298	(511)	9
(4,361)	(f) Less: Recoverable from Health	(4,751)	(5,245)	494	7
33,551	Total 44-3	32,549	33,042	(493)	

Manitoba Advanced Education and Literacy

Expenditure Summary

For the fiscal year ended March 31, 2013, with comparative figures for the previous fiscal year (\$000s)

Estimate 2012/13	Appropriation		Actual 2012/13	Actual 2011/12	Increase (Decrease)	Explanation Number
	44-4	Adult Learning and Literacy				
995	(a)	Salaries and Employee Benefits	918	890	28	
342	(b)	Other Expenditures	214	290	(76)	
17,766	(c)	Adult Learning Centres	17,610	17,224	386	
2,506	(d)	Adult Literacy	2,758	2,801	(43)	
(412)	(e)	Less: Recoverable from Canada-Manitoba Labour Market Agreement	(412)	(412)	0	
21,197		Total 44-4	21,088	20,793	295	

Manitoba Advanced Education and Literacy

Expenditure Summary

For the fiscal year ended March 31, 2013, with comparative figures for the previous fiscal year (\$000s)

Estimate 2012/13	Appropriation		Actual 2012/13	Actual 2011/12	Increase (Decrease)	Explanation Number
	44-5	Capital Grants				
9,754	(a)	Universities	9,751	11,265	(1,514)	10
1,817	(b)	Colleges	1,817	1,817	0	
11,571		Total 44-5	11,568	13,082	(1,514)	

Manitoba Advanced Education and Literacy

Expenditure Summary

For the fiscal year ended March 31, 2013, with comparative figures for the previous fiscal year (\$000s)

Estimate 2012/13	Appropriation		Actual 2012/13	Actual 2011/12	Increase (Decrease)	Explanation Number
	44-6	Costs Related to Capital Assets				
910	(a)	Amortization Expense	758	404	354	11
636	(b)	Interest Expense	764	475	289	12
1,546		Total 44-6	1,522	879	643	
689,205		Total - Advanced Education and Literacy	683,121	654,344	28,777	

**Manitoba Advanced Education and Literacy
Expenditure Summary**

For the fiscal year ended March 31, 2013 with comparative figures for the previous fiscal year (\$000s)

Explanation Number:

1. Increased expenditure mainly reflects 2012/13 approved funding and program increases.
2. Decreased expenditure mainly reflects approved reductions applied to System Restructuring Grants.
3. Increased expenditure mainly reflects 2012/13 approved funding and program increases.
4. Increased expenditure mainly reflects 2012/13 approved funding and program increases.
5. Variances reflect the elimination of salaries, employee benefits and subsequent recovery from Red River College for program staff transferred from the Department to the institution as per the March 2012 Employee Transfer Agreement.
6. Increased expenditure mainly reflects an increase in 2012/13 expenses related to the Student Financial Aid Information System (SFAIS), the Common Indicators Project and banking charges compared to 2011/12.
7. Decreased expenditure mainly relates to the Medical Student/Resident Financial Program and reflects fewer loans issued as a result of a reduced number of eligible applicants in 2012/13. Decrease expenditure is offset by a matching decrease in the recovery from the Department of Health.
8. Decreased expenditure relates to reduced number of eligible applicants in 2012/13 for the Transition Bursary as this is the final year of the program.
9. Decreased expenditure mainly reflects a one-time reduction in the Provision for Loss requirement in 2012/13.
10. Decreased expenditure mainly reflects 2011/12 costs for capital projects at the University of the North (UCN), which were part of the Knowledge Infrastructure Program (KIP) which was completed in 2011/12.
11. Increased expenditure relates to the capitalization of the first phase of the Student Financial Aid Information System (SFAIS) project in 2011/12, for which amortization costs were calculated based on the ½ year rule compared to full-year amortization in 2012/13.
12. Increased expenditure relates to the capitalization of the first phase of the Student Financial Aid Information System (SFAIS) project in 2011/12, for which interest costs were calculated based on the ½ year rule compared to full-year interest in 2012/13.

**Manitoba Advanced Education and Literacy
Revenue Summary by Source**

For the fiscal year ended March 31, 2013, with comparative figures for the previous fiscal year (\$000s)

Actual 2011/12	Actual 2012/13	Increase (Decrease)	Source	Actual 2012/13	Estimate 2012/13	Variance	Expl. No.
TAXATION							
0	0	0	Total	0	0	0	
OTHER REVENUE							
59	66	7	Fees	66	66	0	
965	942	(23)	Sundry	942	1,140	(198)	
1,024	1,008	(16)	Total	1,008	1,206	(198)	
GOVERNMENT OF CANADA							
1,223	1,350	127	Canada Student Loan Act Service Fee	1,350	1,223	127	
1,044	1,117	73	Canada Study Grants	1,117	1,350	(233)	
2,000	2,000	0	Canada-MB Minority/Second Language Agreement	2,000	2,000	0	
16	0	(16)	HRSDC Foreign Credential Recognition Program	0	0	0	1
0	507	507	UofM Active Living Centre	507	0	507	2
15,827	0	(15,827)	Knowlegde Infrastructure Program (KIP)	0	0	0	3
1,276	530	(746)	HRSDC Transition Program	530	700	(170)	4
21,386	5,504	(15,882)	Total	5,504	5,273	231	
22,410	6,512	(15,898)	Total – Advanced Education and Literacy	6,512	6,479	33	

Manitoba Advanced Education and Literacy
Five Year Expenditure and Staffing Summary by Main Appropriation
For the fiscal years ended March 31, 2009 to March 31, 2013

Main Appropriation	2008/09		2009/10		2010/11		2011/12		2012/13	
	FTE	\$000	FTE	\$000	FTE	\$000	FTE	\$000	FTE	\$000
44-1 Administration and Finance	12.00	2,001	13.00	2,148	13.00	2,170	13.00	2,143	13.00	1,905
44-2 Support for Universities and Colleges	13.00	507,515	14.00	533,590	14.00	551,344	14.00	584,572	14.00	614,489
44-3 Manitoba Student Aid	65.25	39,382	65.25	30,629	65.25	32,066	65.25	33,043	65.25	32,549
44-4 Adult Learning and Literacy	11.00	19,347	12.00	21,269	12.00	21,035	12.00	20,793	12.00	21,088
Sub-total	101.25	568,245	104.25	587,636	104.25	606,615	104.25	640,551	104.25	670,031
44-5 Capital Grants		13,071		11,850		13,203		13,082		11,568
44-6 Costs Related to Capital Assets		196		307		601		1,072		1,522
Total - Advanced Education and Literacy	101.25	581,512	104.25	599,793	104.25	620,419	104.25	654,705	104.25	683,121

* Historical actual expenditures have been adjusted to reflect program transfers between departments, to facilitate year over year comparison.

Performance Reporting

Performance Reporting Table

The following section provides information on key performance measures for Manitoba Advanced Education and Literacy for the 2012/13 reporting year. This is the seventh year in which all Government of Manitoba departments have included a Performance Measurement section (in a standardized format) in their Annual Reports.

Performance indicators are intended to complement financial results and provide Manitobans with meaningful and useful information about government activities, and their impact on the province and its citizens.

For more information on performance reporting and the Manitoba government, visit www.manitoba.ca/performance

Your comments on performance measures are valuable to us. Please send comments or questions to mbperformance@gov.mb.ca.

What is being measured and using what indicator? (A)	Why is it important to measure this? (B)	Where are we starting from (baseline measurements)? (C)	What is the 2012/13 result (current year) or most recent available data? (D)	What is the trend over time? (E)	Comments/Recent Actions/Report Links (F)
1. Access to education and training by measuring the enrollments in universities, colleges, adult learning centres and adult literacy programming.	Education and training is strongly connected to economic and social benefits for individuals and society. Participation in university, college, adult learning centres and literacy programming is one key measure of access to learning opportunities.	1999/00 University enrollment ¹ Full-time 22,410 Part-time <u>8,255</u> Total 30,665	2012/13 University enrollment ¹ Full-time 33,273 Part-time <u>10,280</u> Total 43,553	Between 1999/00 and 2012/13 full and part time enrolment increased by 42% for undergraduate and graduate students.	Data on Aboriginal enrollment are based on self-identification and likely under-reports the actual proportion of Aboriginal learners.
		1999/00 College enrollment ² Full-time 10,452 Part-time <u>597</u> Total 11,049	2011/12 College enrollment ² Full-time 15,534 Part-time <u>1,680</u> Total 17,214	Between 1999/00 and 2011/12, colleges' apprenticeship and regular day enrolment increased by 55.8%.	2011/12 distribution of Aboriginal enrolment is similar to previous years: University – 8% College – 12.9%
		2003/04 number of registered learners in Adult Learning Centres ³ : 9,715	2011/12 number of registered learners in Adult Learning Centres ³ : 9,007	Annual increase from 2007/08 to 2010/11. Decrease in 2011/12.	ALCs are important for access to education, particularly for Aboriginal Manitobans. In 2011/12, 42% of ALC learners self-identified as Aboriginal.

¹ Includes undergraduate and graduate students in regular session only (September to April)

² Includes regular programs and apprenticeship. Does not include continuing education, distance education and contract training. College figures are for 2011/12, as 2012/13 data are not yet available due to the continuous intake of students during the year (July to June).

³ This is the earliest year for which data is available, as data is collected for the school year (July to June). Year end statistics for 2012/13 will be available in fall 2013.

What is being measured and using what indicator? (A)	Why is it important to measure this? (B)	Where are we starting from (baseline measurements)? (C)	What is the 2012/13 result (current year) or most recent available data? (D)	What is the trend over time? (E)	Comments/Recent Actions/Report Links (F)
		2003/04 number of learners in adult literacy programs: 2,443	2011/12 number of learners in adult literacy programs: 2,508	Annual increase from 2007/08 to 2009/10 Decreases in 2010/11 and 2011/12.	38% of adult literacy learners self-identified as Aboriginal.
2. Affordable education by measuring the cost of post-secondary education to students, uptake of government student loans and bursaries, and the debt load of students accessing financial assistance.	The cost of post-secondary education to students is a key indicator of affordability of post-secondary education.	1999/00 university tuition (weighted average) for Arts and Sciences was \$3,192	2012/13 university tuition (weighted average) for Arts and Sciences was \$3,221	Tuition was reduced by 10% in 2000/01 and frozen until 2009/10. Tuition increases for 2012/13 were limited to 2.8%.	Manitoba's university tuition is still the third lowest in the country, after Quebec and Newfoundland.
		1999/00 college tuition (un-weighted average) was \$1,435	2012/13 college tuition (un-weighted average) was \$1,775	College tuition increases for 2012/13 were limited to \$150.	Manitoba's college tuition is the second lowest in Canada after Newfoundland (excluding Quebec).
	Providing financial assistance to students increases access to post-secondary education and increases the chance of successful completion.	1999/00 – Number of recipients of major student loans and bursaries. - Canada Student Loans: 10,328 - Manitoba Student Loans: 10,112 - Manitoba Bursary: (for 2000/01) 1,961 - Canada Millennium Scholarship Bursary: 3,516	2011/12 – Number of recipients of major student loans and bursaries. - Canada Student Loans: 9,348 - Manitoba Student Loans: 8,953 - Manitoba Bursary: 3,626 - Transition Bursary (formerly the Canada Millennium Scholarship Bursary): 225	In recent years, student loan uptake has increased steadily, but is still relatively low compared to other jurisdictions	In addition to student loans, \$42.9M was awarded in the form of non-repayable assistance in 2011/12. 2011/12 was the last year for the Transition Bursary (formerly the Canada Millennium Scholarship Bursary).
	Student debt is kept to a minimum by providing a mix of loans, grants,	1999/00 average student debt levels after remission for:	2011/12 average student debt levels after remission for:	Debt levels dipped in the late 2000s, but have slowly started to rise.	Although student debt has been trending upward nationally, Manitoba student debt levels remain amongst

What is being measured and using what indicator? (A)	Why is it important to measure this? (B)	Where are we starting from (baseline measurements)? (C)	What is the 2012/13 result (current year) or most recent available data? (D)	What is the trend over time? (E)	Comments/Recent Actions/Report Links (F)
	bursaries, scholarships and other awards.	- Students in last year of a Four Year University Program \$18,744 ⁴ - Students in last year of any program \$12,555	- Students in last year of a Four Year University Program \$19,075 ⁴ - Students in last year of any program \$13,673	Increase Increase	the lowest in Canada.
3. Student success in education and training by measuring graduations/ credentials received from universities, colleges, adult learning centres and goals reached through literacy programming.	To fully realize the benefits of education and adult learning, it is important that individuals successfully complete their programs. Numbers of learners achieving various education credentials and goals is one way to measure this.	1999 University Graduates ⁵ Bachelor Degree 4,460 Master's Degree 578 Doctoral Degree 67 Medicine & Dentistry 121 Certificate/Diploma 215 Total 5,441	2012 University Graduates ⁵ Bachelor Degree 5,691 Master's Degree 797 Doctoral Degree 132 Medicine & Dentistry 139 Certificate/Diploma 283 Total 7,042	Increase From 1999 to 2012, the total number of university credentials granted increased 29.4%	
		1999/2000 College Graduates ⁵ Diploma 1,279 Certificate 1,578 Total 2,857	2011 College Graduates ⁵ Diploma 1,988 Certificate 2,463 Total 4,551	From 1999 to 2011, the number of college graduates (diploma and certificate) increased by 59.3%	
		2003/04 ALC courses credits granted: 12,258 Secondary Diploma (High School): 1,254	2010/11 ALC courses credits granted: 12,246 Secondary Diploma (High School): 1,356	Stable. The average number of credits taken per ALC learner has also remained stable.	Some ALC learners take courses without intending to complete a diploma. In 2011/12, 530 ALC graduates self-declared as Aboriginal.
		In 2008/09, 25% of adult literacy learners were assessed as having achieved a higher level according to the Manitoba Stages Framework.	In 2011/12, Adult Literacy programming, 34% of learners were assessed as having achieved a higher level according to the Manitoba Stages Framework.	Stable	Adult Literacy programming addresses the literacy, numeracy and communication skills barriers to further education/training and employment.

⁴ Excludes professional programs

⁵ University and college graduates are reported in the calendar year of graduation. College graduates include those from regular day programs and full-time regional centre programs (apprenticeship is not included).

<i>What is being measured and using what indicator? (A)</i>	<i>Why is it important to measure this? (B)</i>	<i>Where are we starting from (baseline measurements)? (C)</i>	<i>What is the 2012/13 result (current year) or most recent available data? (D)</i>	<i>What is the trend over time? (E)</i>	<i>Comments/Recent Actions/Report Links (F)</i>
4. Our capacity to meet the evolving skills requirements of the labour market by measuring employment outcomes of university and college graduates.	Many education and training programs and activities support the development of a skilled workforce. Some of these are formal programs and others are non-formal (ex: literacy/essential skills programming).	While some university and college programs are intended to lead more directly to employment, employment outcomes of all graduates are important to measure. Statistics Canada's National Graduate Survey followed up the graduates of 2000 in 2002 to determine employment rates. Results indicated that 90% of Manitoba graduates were employed.	A survey of the 2007 Manitoba university and college graduates found that 88% were employed. Among those not currently enrolled in full-time post-secondary education, the percentage employed rises to 91%.	New survey to be completed in 2014, will enable baseline trending analysis.	Adult learning opportunities are also relevant to meeting the evolving skill requirements of the labour market. Many participants in ALCs and Adult Literacy programming are employed full-time or part-time while attending (2011/12): <ul style="list-style-type: none"> ▪ Learners attending ALCs: 40% employed ▪ Learners attending Literacy programming: 35% employed

The Public Interest Disclosure (Whistleblower Protection) Act

The Public Interest Disclosure (Whistleblower Protection) Act

The Public Interest Disclosure (Whistleblower Protection) Act came into effect in April 2007. This law gives employees a clear process for disclosing what they know about wrongdoings/illegal acts in the Manitoba public service. The *Act* also protects “whistleblowers” from any forms of retaliation. It builds on protections already in place under other statutes, as well as collective bargaining rights, policies, practices and processes in the Manitoba public service.

Wrongdoing under the *Act* includes:

- A violation of federal or provincial legislation
- an act or omission that endangers public safety, public health or the environment
- gross mismanagement
- directing or counseling a person to commit a wrongdoing. The *Act* is not intended to deal with routine operational or administrative matters.

A disclosure made by an employee in good faith, in accordance with the *Act*, and with a reasonable belief that wrongdoing has been, or is about to be, committed, is considered to be a disclosure under the *Act*. This is true whether or not the subject matter constitutes wrongdoing. All disclosures receive careful and thorough review to determine if action is required under the *Act*, and must be reported in a department’s annual report in accordance with Section 18 of the *Act*.

The following is a summary of disclosures received by Manitoba Advanced Education and Literacy for fiscal year 2012/13:

Information Required Annually (per Section 18 of The Act)	Fiscal Year 2012/13
The number of disclosures received, and the number acted on and not acted on. <i>Subsection 18(2)(a)</i>	NIL
The number of investigations commenced as a result of a disclosure. <i>Subsection 18(2)(b)</i>	NIL
In the case of an investigation that results in a finding of wrongdoing, a description of the wrongdoing and any recommendations or corrective actions taken in relation to the wrongdoing, or the reasons why no corrective action was taken. <i>Subsection 18(2)(c)</i>	NIL

Appendices

Table 1
Student Aid Program Awards
August 1, 2012 to July 31, 2013

Total Award Amounts													
Institution	No. of Students with Processed Applications *	No. of Students Receiving Awards*	CSL	MSL	PWPA	AB	CSGP	RN	SSG	AMSFAP	MSRFAP	Total	MB**
University of Manitoba	4,682	3,859	13,288,883	9,519,903	84,500	816,776	6,789,490	310,650	178,625	140,000	4,418,000	35,546,827	1,790,668
College St. Boniface	160	140	500,059	399,251	3,500		279,343	12,600	9,203			1,203,956	149,973
Red River College	1,894	1,501	4,929,485	3,536,276	44,250	482,832	2,523,164	82,200	156,493			11,754,700	1,171,459
University of Winnipeg	1,560	1,244	4,046,660	2,804,634	44,750	644,454	2,393,197	61,800	90,893			10,086,388	801,214
Assiniboine Community College	323	261	762,236	585,446	9,750		559,282	53,100	10,616			1,980,430	184,244
Brandon University	539	470	1,759,841	1,279,544	13,750		862,218	101,700	33,420			4,050,473	539,126
University College of the North	133	106	354,523	286,807	12,250	31,721	294,062	17,100	11,598			1,008,061	102,406
Other Manitoba Public Institutions	307	240	953,563	584,351	3,750		193,500	31,800				1,766,964	232,058
Other In-Province	2,168	1,855	10,931,113	6,928,266	60,750		1,681,026	87,000				19,688,155	3,680,477
Canada	1,464	1,210	7,098,976	4,647,502	19,250		1,549,732			14,000	282,000	13,611,460	1,773,959
Elsewhere	314	282	2,195,550	1,395,435	1,250		364,075				20,000	3,976,310	30,403
Total	13,544	11,168	46,820,889	31,967,415	297,750	1,975,783	17,489,089	757,950	490,848	154,000	4,720,000	104,673,724	10,455,987

Number of Students Receiving Awards

Institution	CSL	MSL	PWPA	AB	CSGP	RN	SSG	AMSFAP	MSRFAP	MB
University of Manitoba	3,464	3,297	338	122	3,082	586	104	20	227	796
College St. Boniface	128	126	14		120	21	4			55
Red River College	1,317	1,213	177	44	1,082	166	64			446
University of Winnipeg	1,084	1,026	179	49	1,024	111	41			314
Assiniboine Community College	209	199	39		201	98	7			70
Brandon University	418	415	55		380	189	22			212
University College of the North	81	88	49	4	93	34	4			31
Other Manitoba Public Institutions	221	202	15		93	63				85
Other In-Province	1,789	1,624	243		712	169				1136
Canada	1,173	1,147	77		789			2	15	543
Elsewhere	278	272	5		164				1	9
Total	10,162	9,609	1,191	219	7,740	1,437	246	22	243	3697

* Numbers do not include MSRFAP students

** MB figures are preliminary as of July 31/13. Drop-offs are expected and will fall within the MB budget.

CSL - Canada Student Loans (full and part time) - up to \$210/week

MSL - Manitoba Student Loans - up to \$140/week

PWPA - Prince of Wales and Princess Anne Awards - non-repayable, \$250 for Aboriginal students with at least \$1 assessed need

AB - Access Bursary - non-repayable, for students in the ACCESS program, replaces MSL

CSGP - Canada Student Grants (full and part time) - non-repayable federal grants

RN - Rural/Northern Bursary, \$600 for students from Rural/Northern Manitoba areas attending Manitoba schools.

SSG - Student Success Grant, up to \$5000, to cover unmet need of students attending Manitoba public schools

MALB - Millennium Adult Learner Bursary - non-repayable, for ALC graduates

MSRFAP - Medical Student/Resident Financial Assistance Program - conditional grants of \$15,000 and \$20,000 for medical students and residents, recoverable from the Department of Health

AMSFAP - Aboriginal Medical Student Financial Assistance Program - conditional grants of \$7,000 for 7 months of service from Manitoba Student Aid

TB - Transition Bursary - used to remit loans

MB - Manitoba Bursary - used to remit loans, \$100 minimum