

Hydrologic Forecast Centre - Manitoba Transportation and Infrastructure

Eastern Manitoba Flows and Levels			
Last Reading Date	Hydrometric Stations	Flow (cfs)	Level (feet)
30-Apr-25	Whitemouth River near Whitemouth	389	
30-Apr-25	Bloodvein River above Bloodvein Bay	2,949	
30-Apr-25	Winnipeg River at Lac du Bonnet		836.35
30-Apr-25	Whiteshell River at Outlet of Jessica Lake	128	
30-Apr-25	Birch River near Prawda	126	
30-Apr-25	Brokenhead River near Beausejour	185	
30-Apr-25	Devils Creek near Libau	7	

Note: Please go to the next pages to view the historical and current flow hydrographs for these rivers

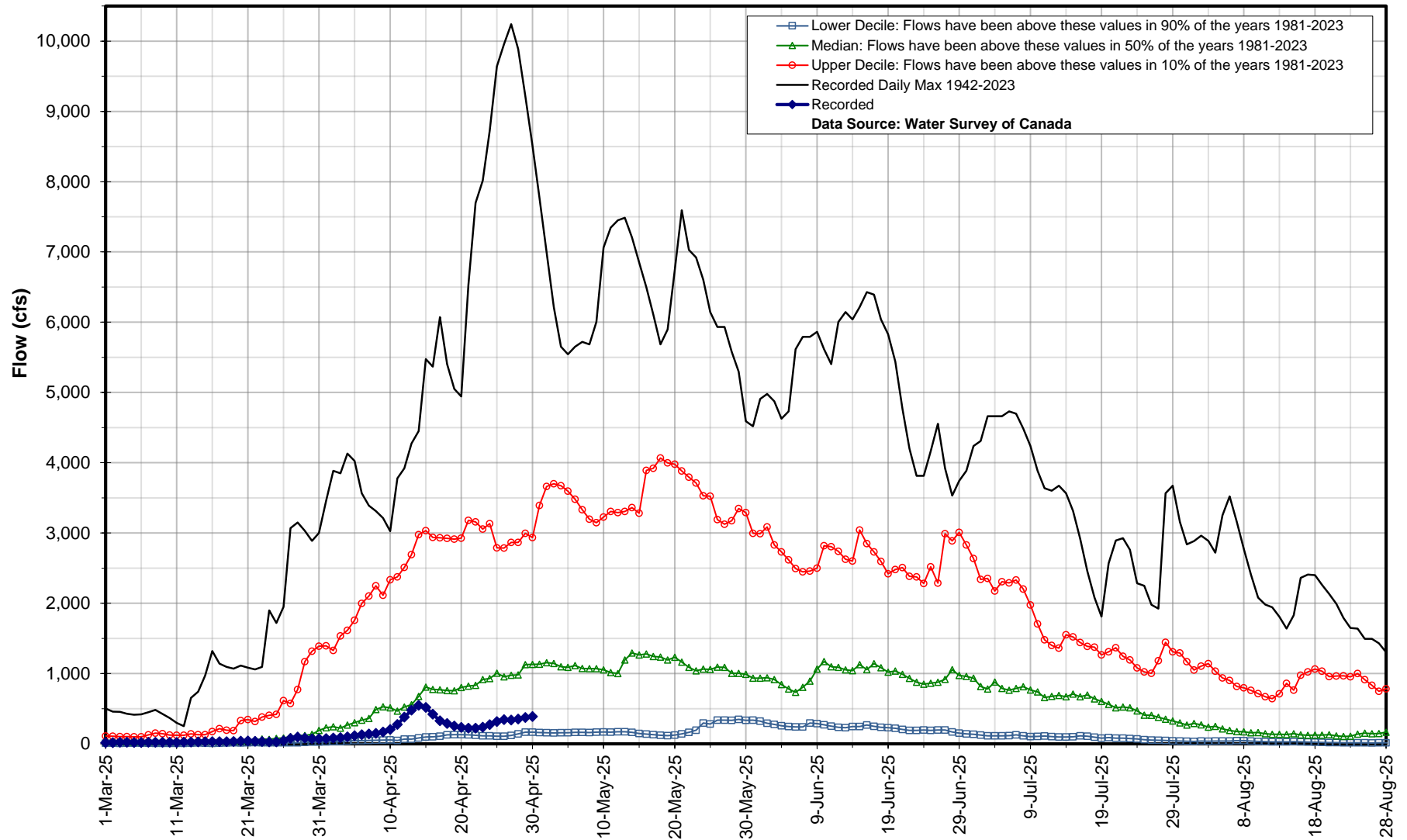
* Real-time flow and level data is provisional and subject to change. Data provided by Water Survey of Canada/Environment Canada

Hydrologic Forecast Centre - Manitoba Transportation and Infrastructure

Whitemouth River near Whitemouth

Apr 30, 2025 : 389 cfs

05PH003

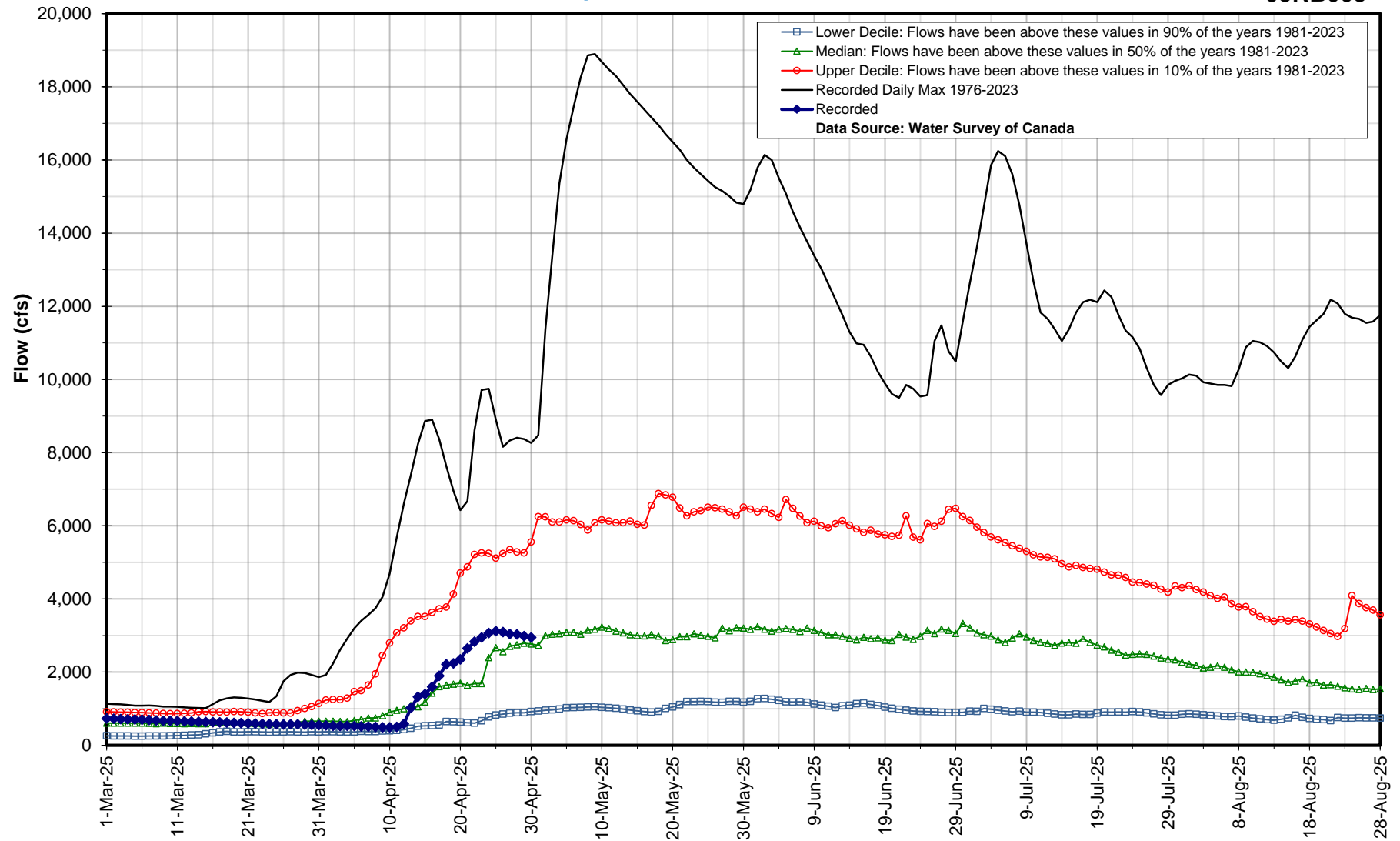


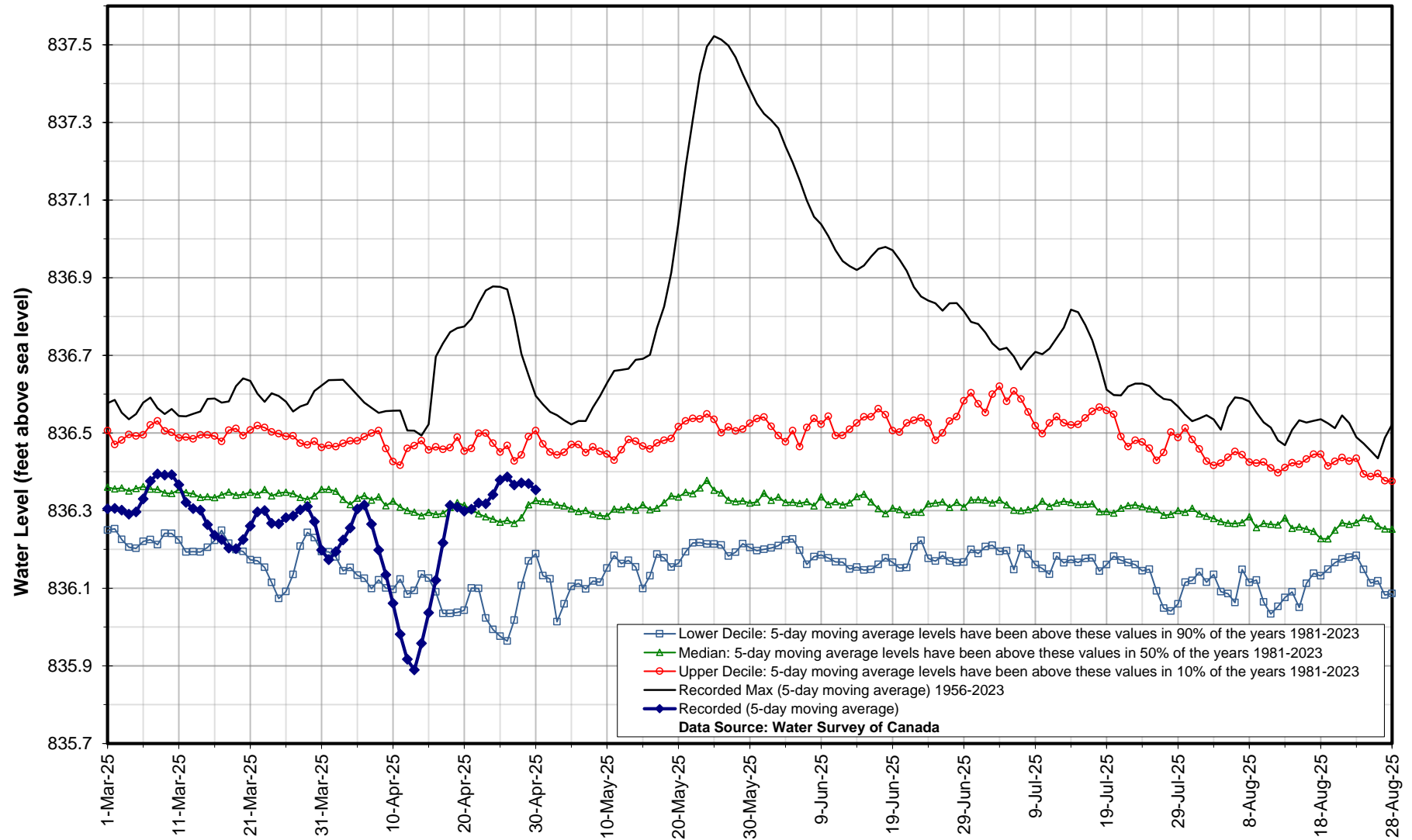
Hydrologic Forecast Centre - Manitoba Transportation and Infrastructure

Bloodvein River above Bloodvein Bay

Apr 30, 2025 : 2,949 cfs

05RB003



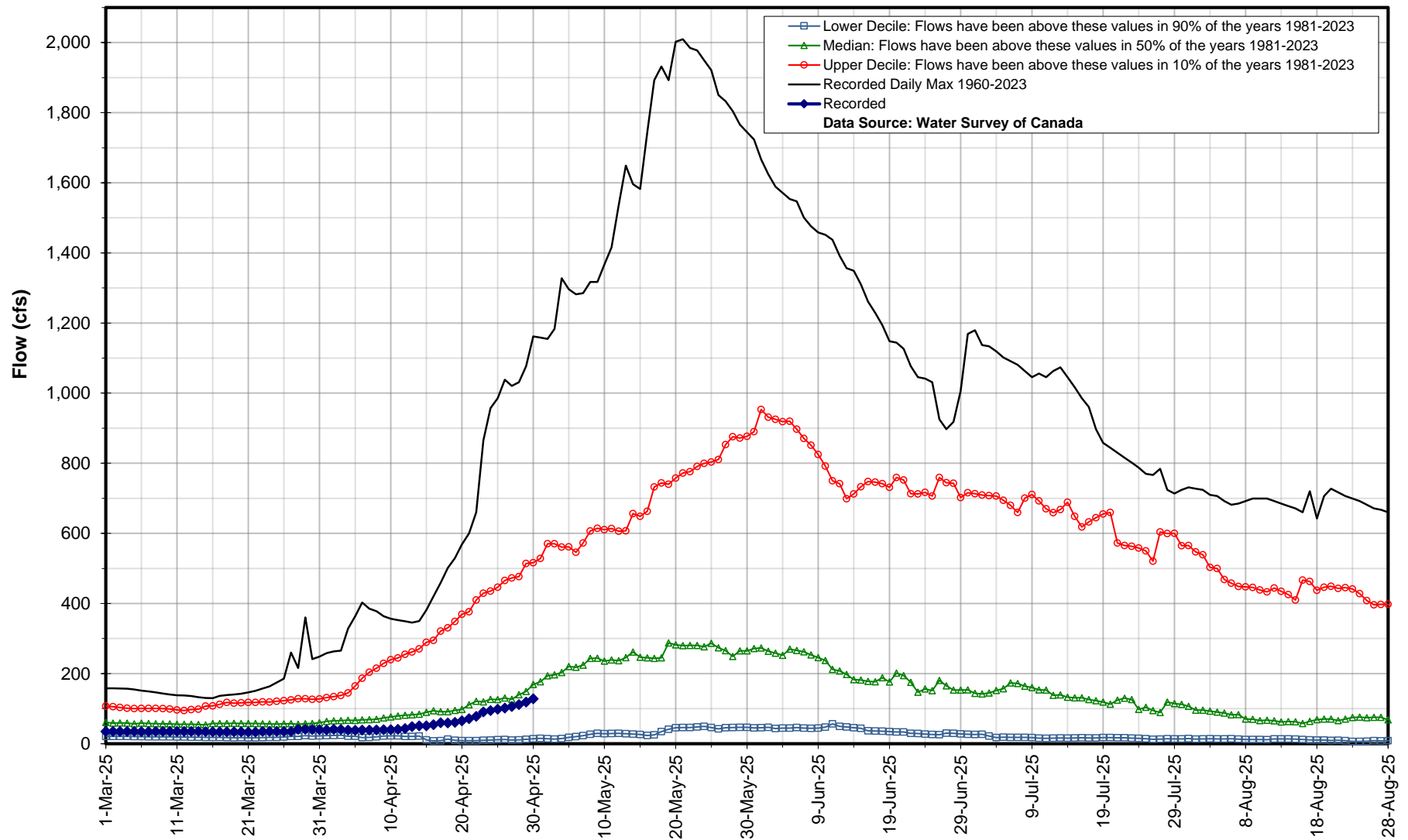


Hydrologic Forecast Centre - Manitoba Transportation and Infrastructure

Whiteshell River at Outlet of Jessica Lake

Apr 30, 2025 : 128 cfs

05PG001

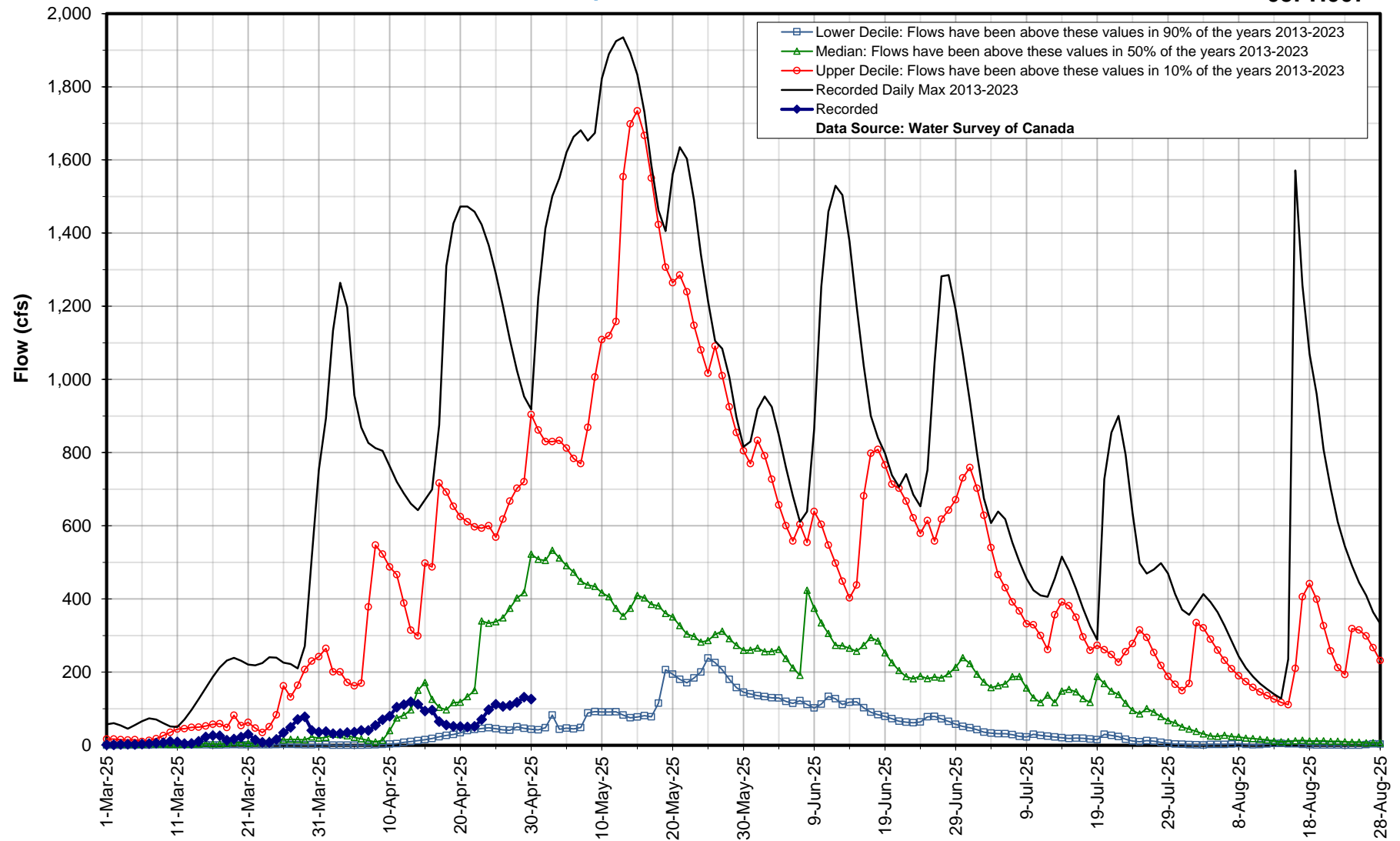


Hydrologic Forecast Centre - Manitoba Transportation and Infrastructure

Birch River near Prawda

Apr 30, 2025 : 126 cfs

05PH007

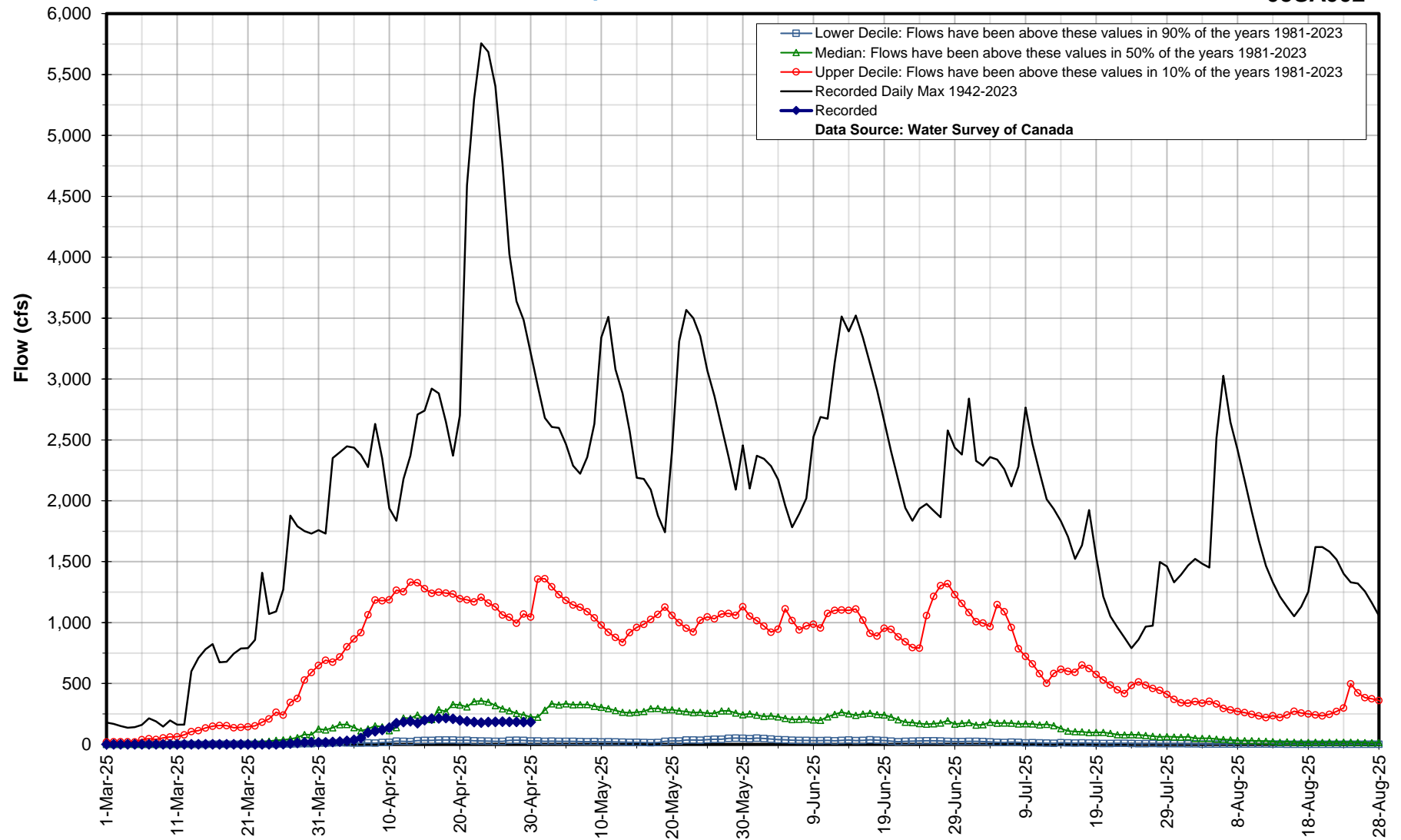


Hydrologic Forecast Centre - Manitoba Transportation and Infrastructure

Brokenhead River near Beausejour

Apr 30, 2025 : 185 cfs

05SA002



Hydrologic Forecast Centre - Manitoba Transportation and Infrastructure

Devils Creek near Libau

Apr 30, 2025 : 7 cfs

050J016

