

Hydrologic Forecast Centre - Manitoba Transportation and Infrastructure

Northern Manitoba Flows and Levels			
Last Reading Date	Hydrometric Stations	Flow (cfs)	Level (feet)
1-May-25	Saskatchewan River at The Pas	29,540	
1-May-25	Churchill River at Sandy Bay	16,180	
1-May-25	Churchill River above Leaf Rapids	13,966	
1-May-25	Red Deer River near Erwood	1,473	
1-May-25	Red Deer River near the Mouth	830	
1-May-25	Carrot River near Turnberry	2,364	
1-May-25	Carrot River near The Pas		848.90
1-May-25	Overflowing River at Overflowing River	639	

Note: Please go to the next pages to view the historical and current flow hydrographs and water levels for these rivers

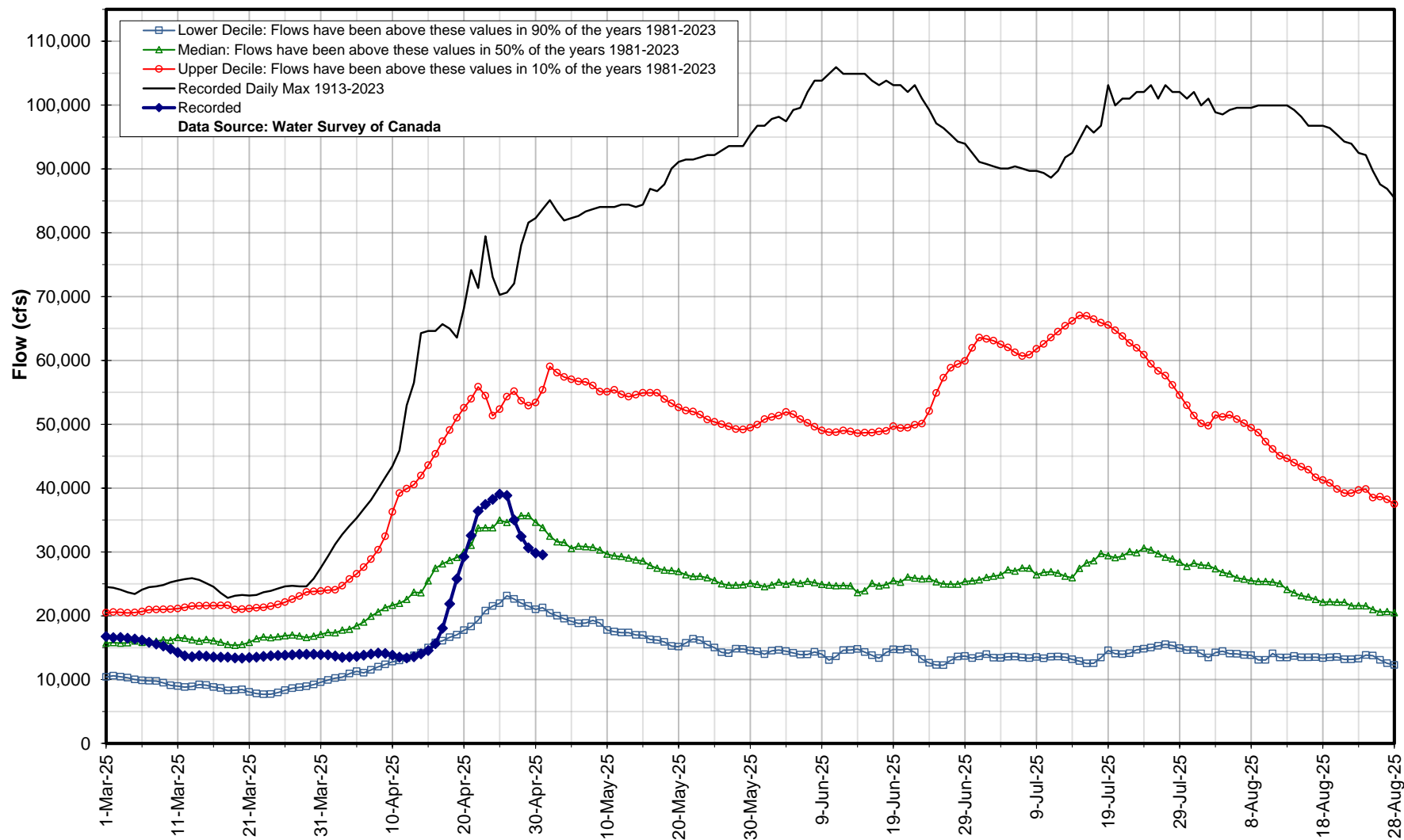
* Real-time flow and level data is provisional and subject to change. Data provided by Water Survey of Canada/Environment Canada

Hydrologic Forecast Centre - Manitoba Transportation and Infrastructure

Saskatchewan River at the Pas

May 01, 2025 : 29,540 cfs

05KJ001

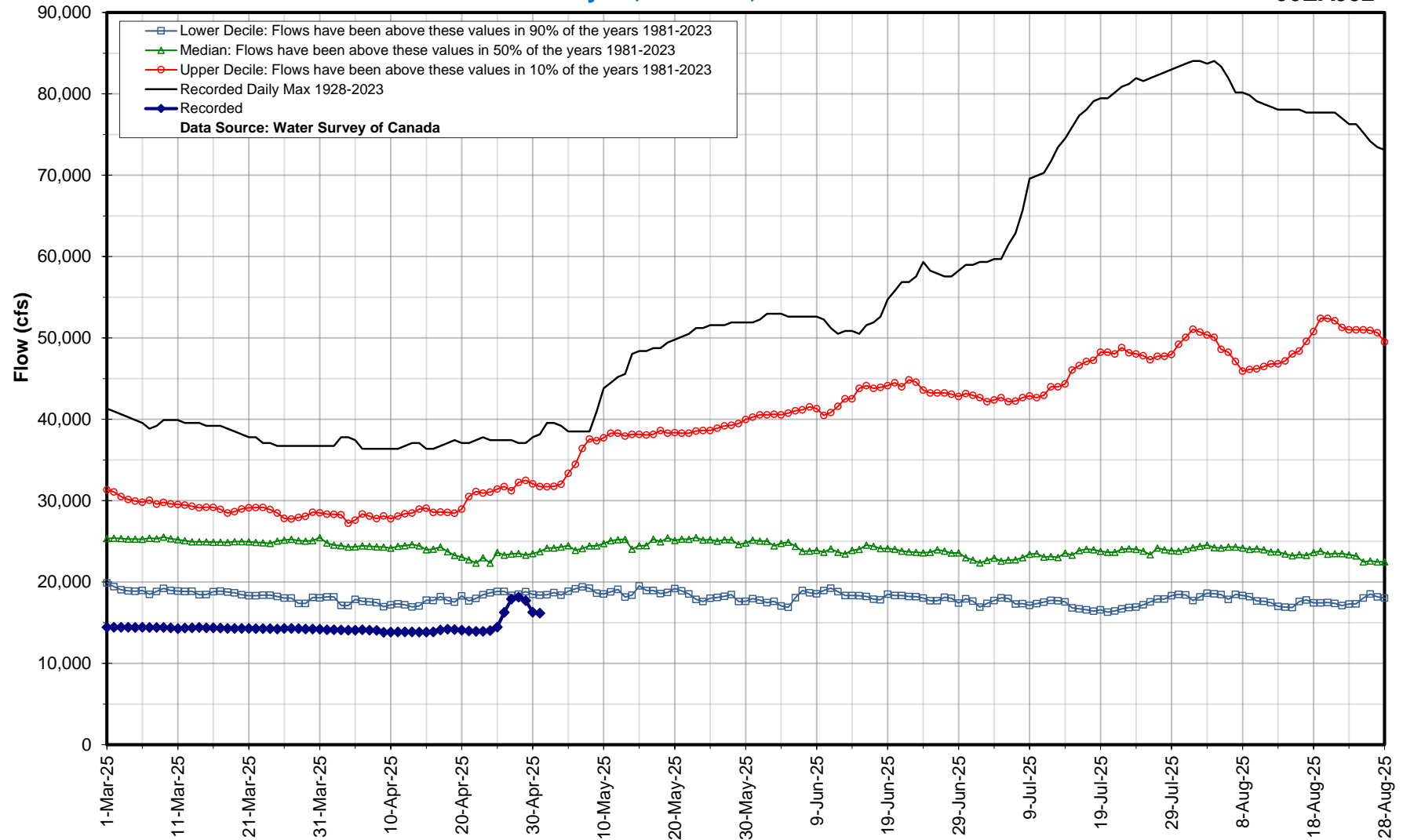


Hydrologic Forecast Centre - Manitoba Transportation and Infrastructure

Churchill River at Sandy Bay

May 01, 2025 : 16,180 cfs

06EA002

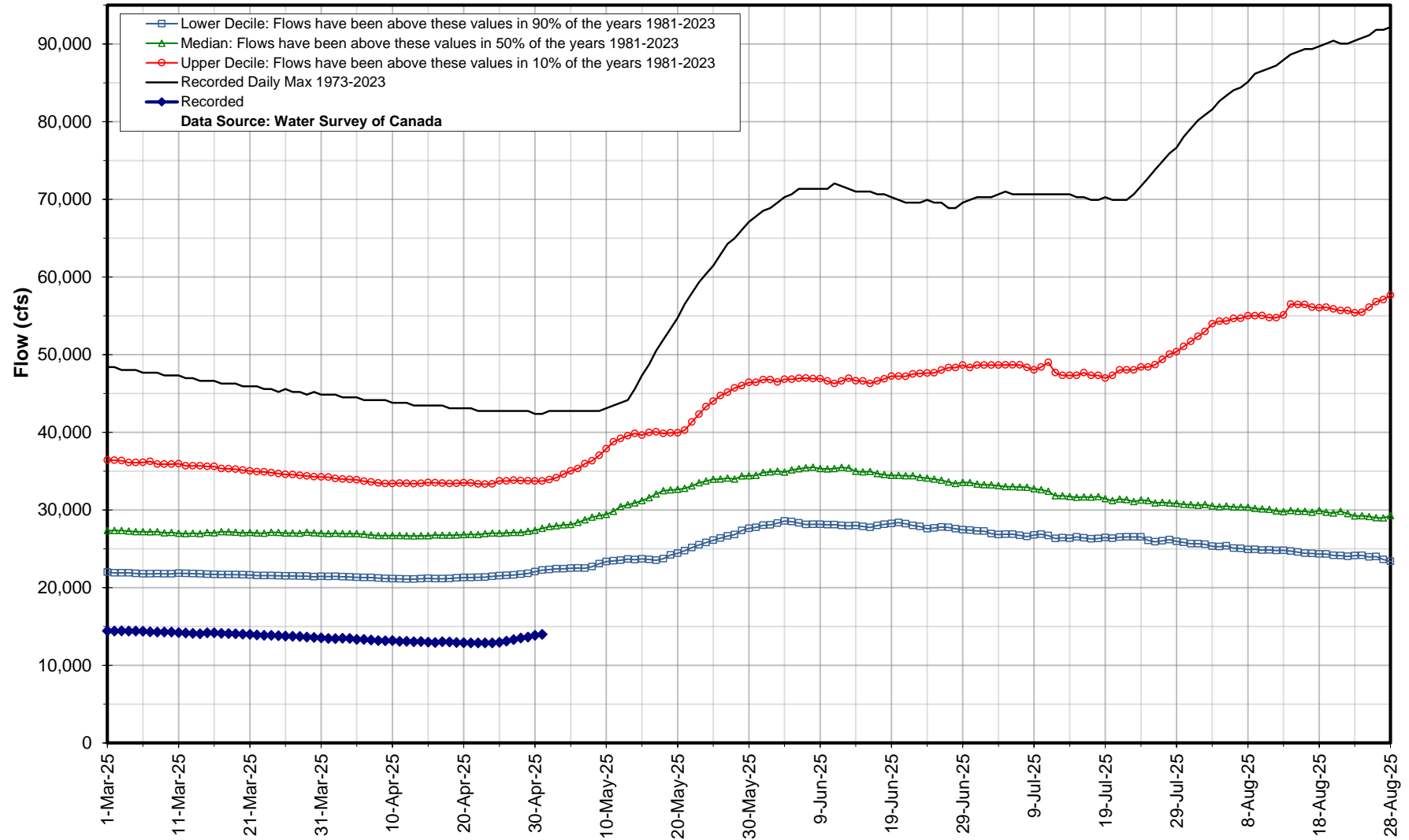


Hydrologic Forecast Centre - Manitoba Transportation and Infrastructure

Churchill River above Leaf Rapids

May 01, 2025 : 13,966 cfs

06EB004

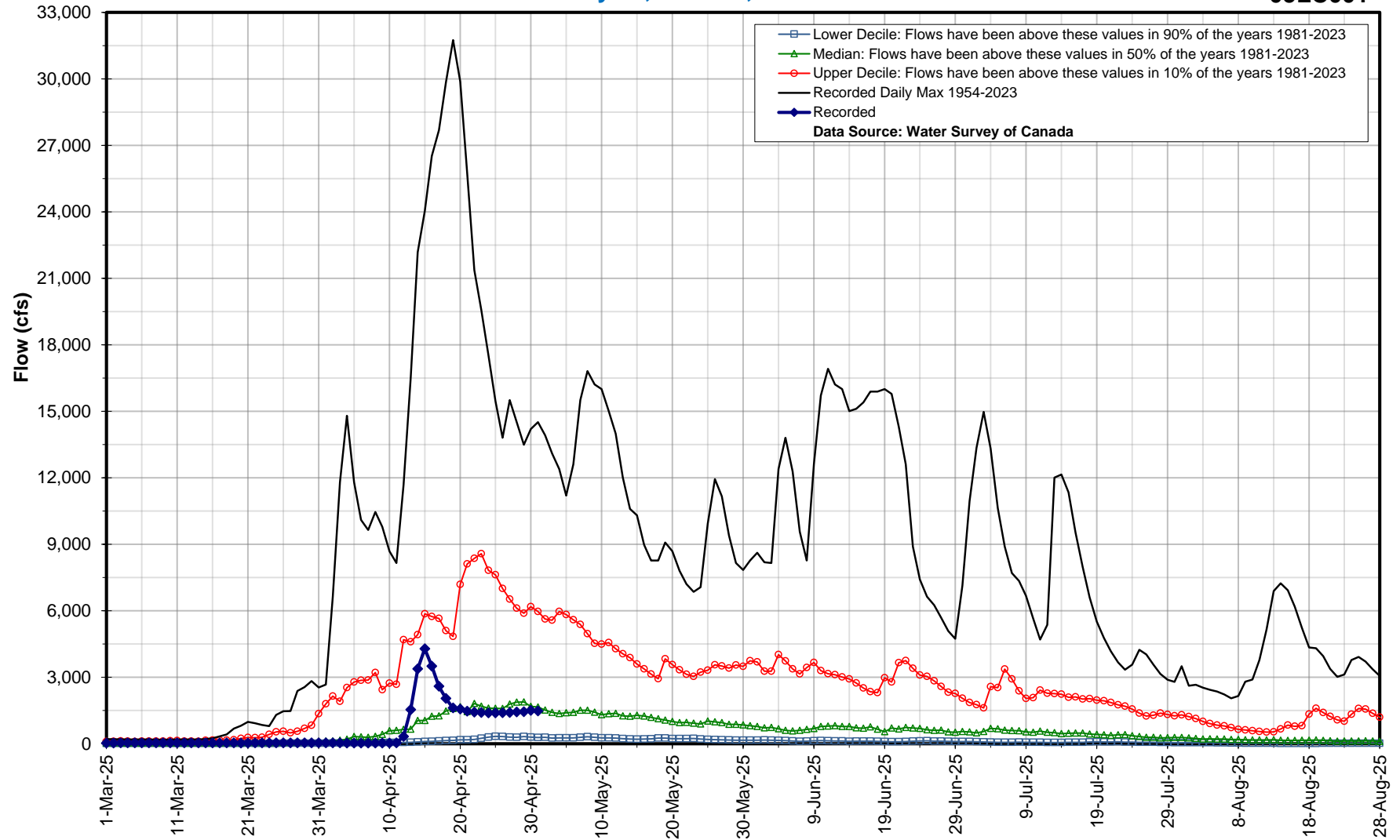


Hydrologic Forecast Centre - Manitoba Transportation and Infrastructure

Red Deer River near Erwood

May 01, 2025 : 1,473 cfs

05LC001

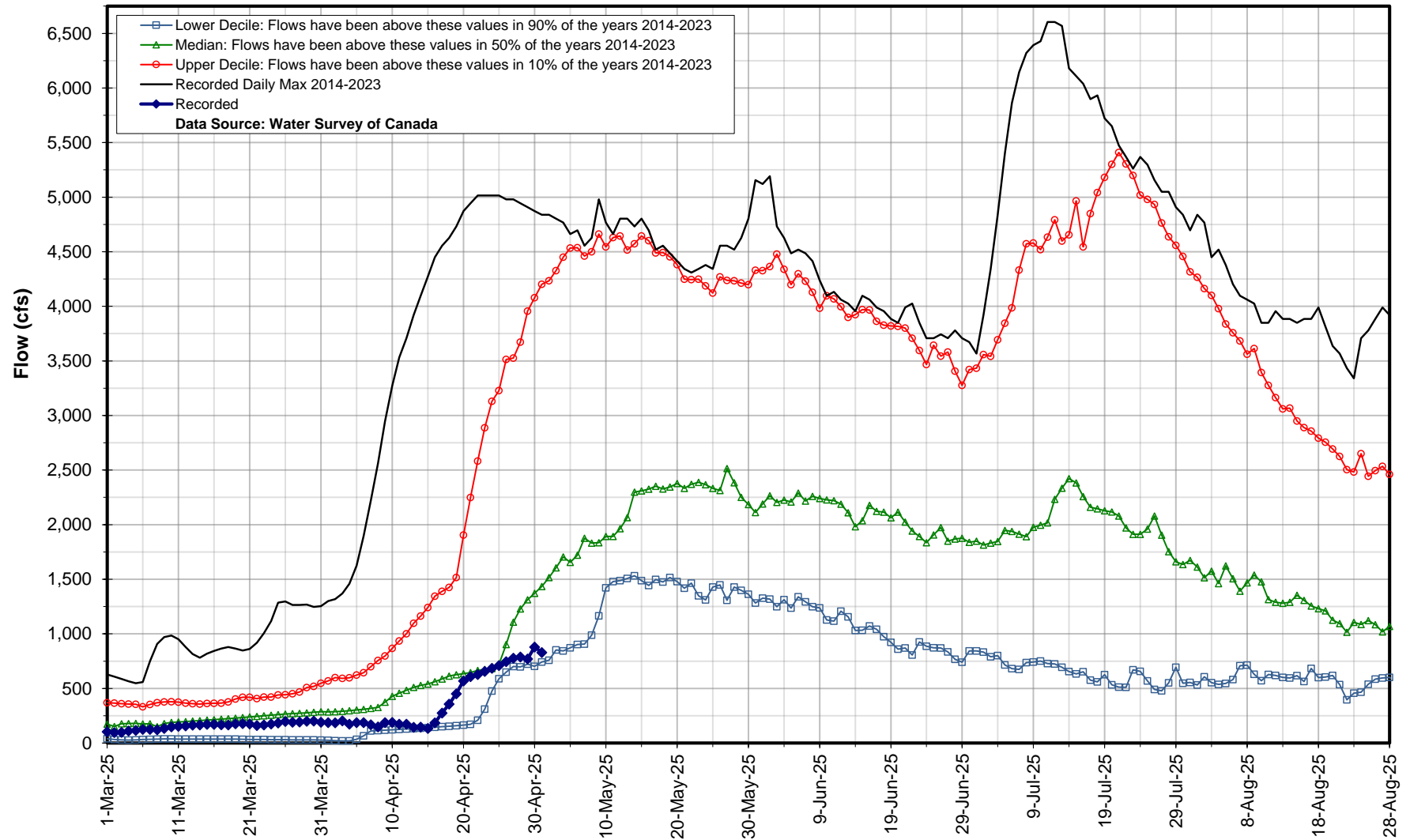


Hydrologic Forecast Centre - Manitoba Transportation and Infrastructure

Red Deer River near the Mouth

May 01, 2025 : 830 cfs

05LC004

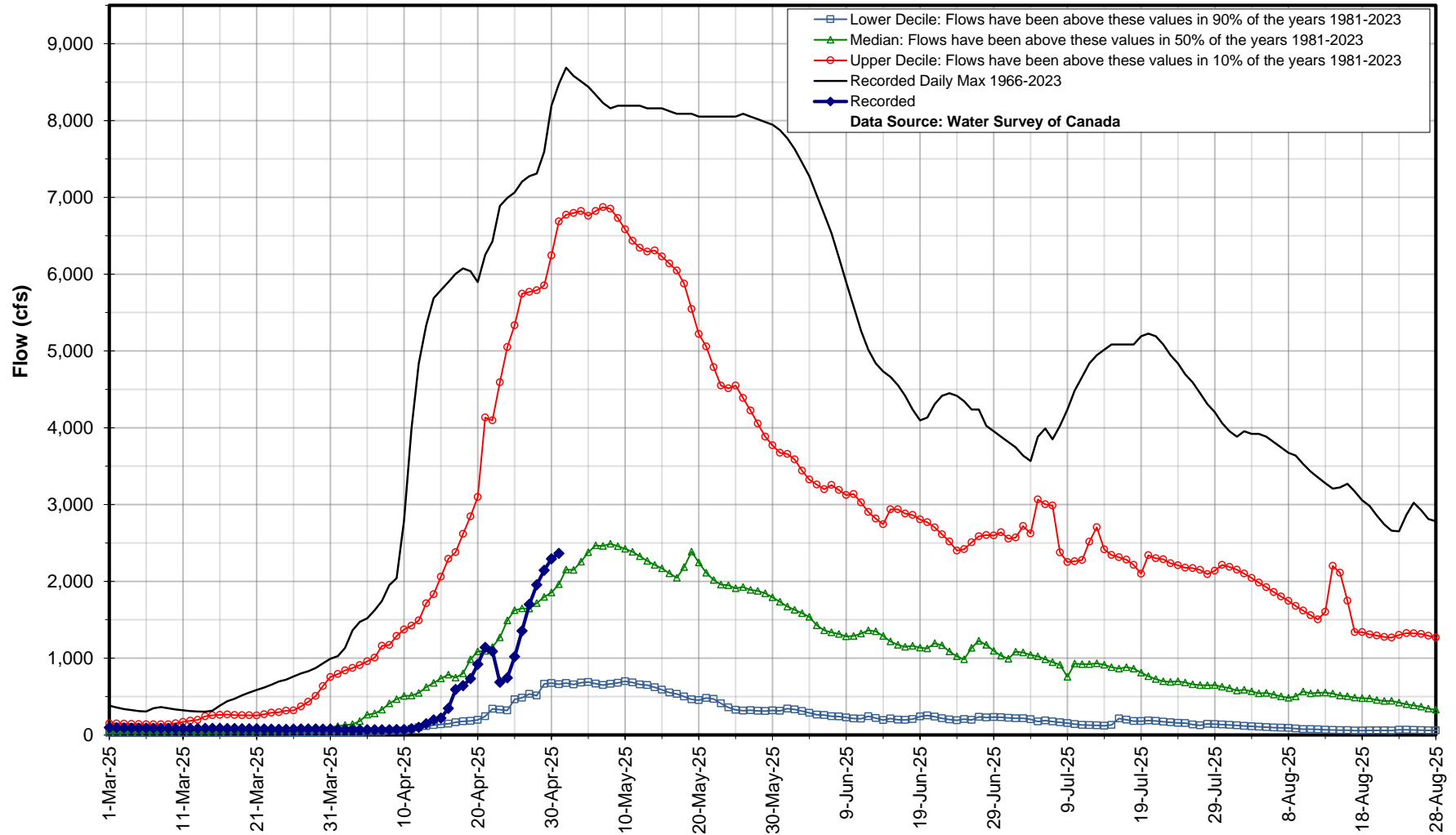


Hydrologic Forecast Centre - Manitoba Transportation and Infrastructure

Carrot River near Turnberry

May 01, 2025 : 2,364 cfs

05KH007

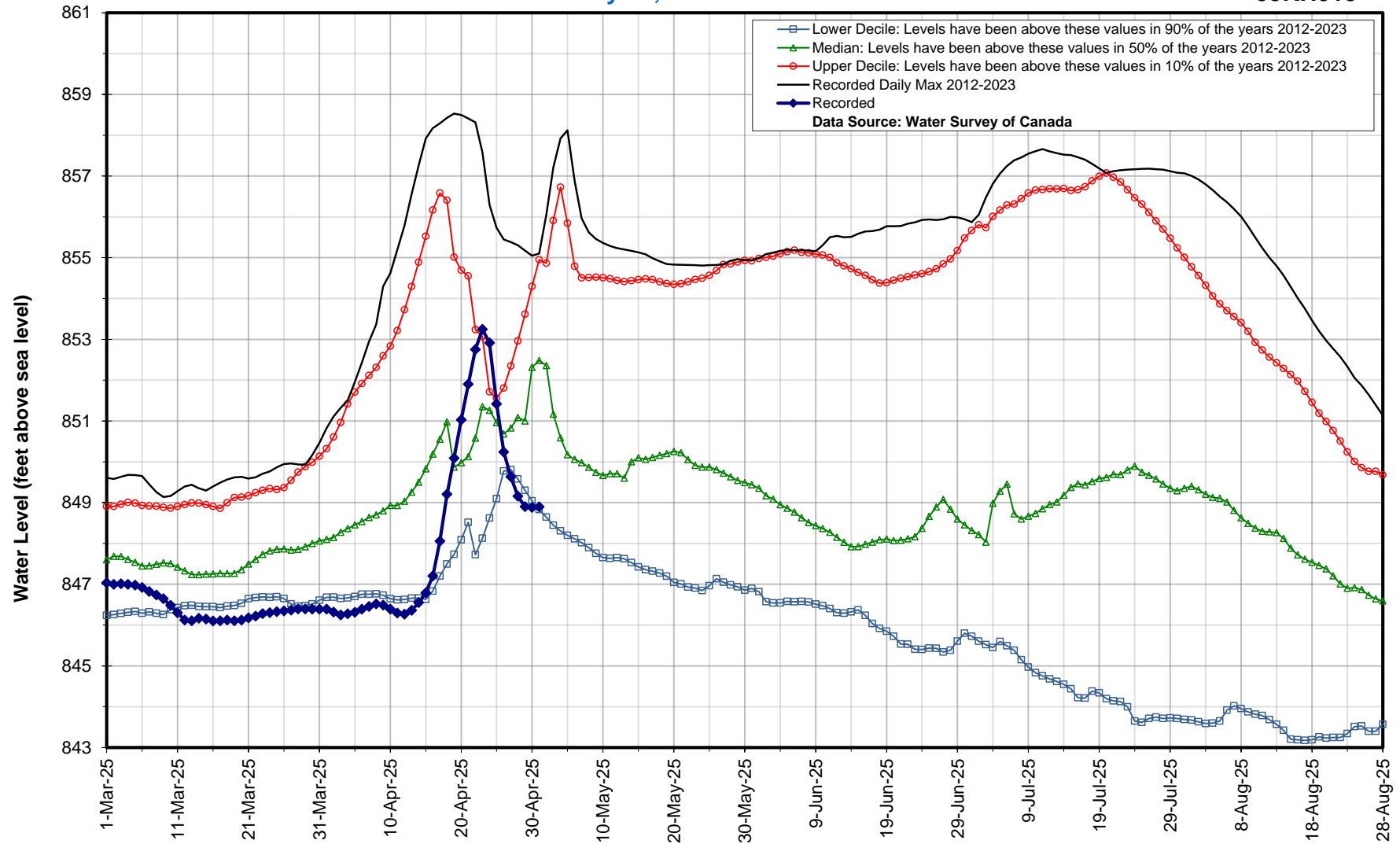


Hydrologic Forecast Centre - Manitoba Transportation and Infrastructure

Carrot River near The Pas

May 01, 2025 : 848.9 ft

05KH015



Overflowing River at Overflowing River

May 01, 2025 : 639 cfs

05LD001

