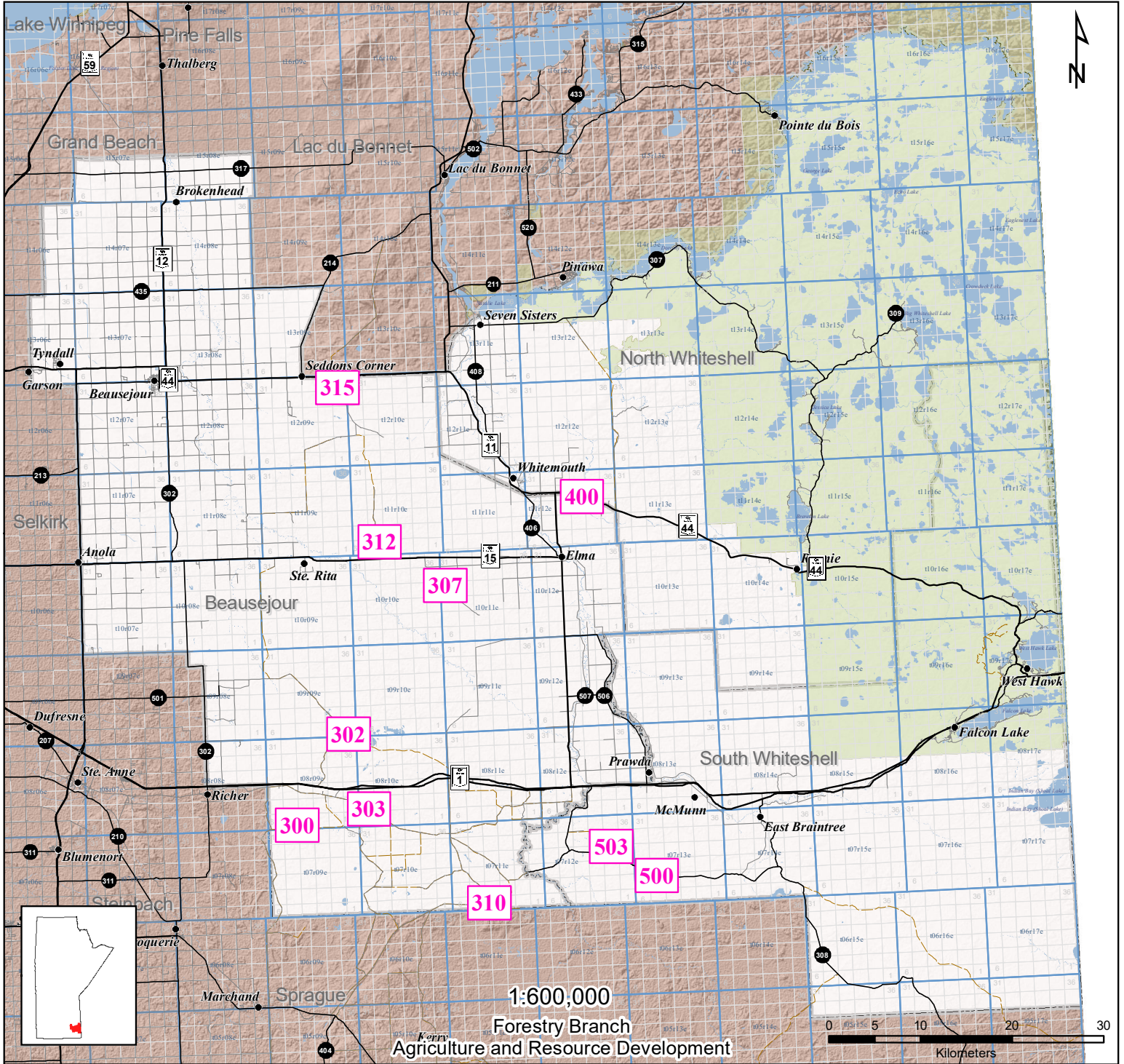
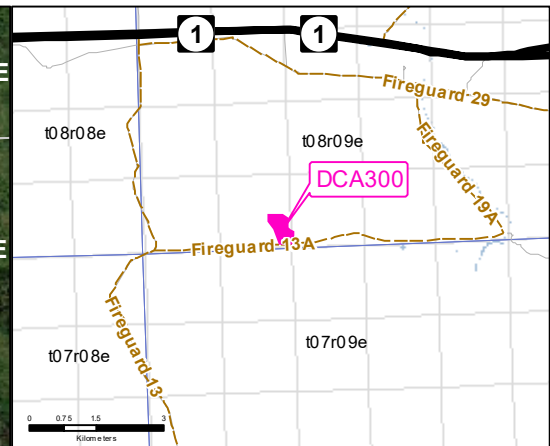
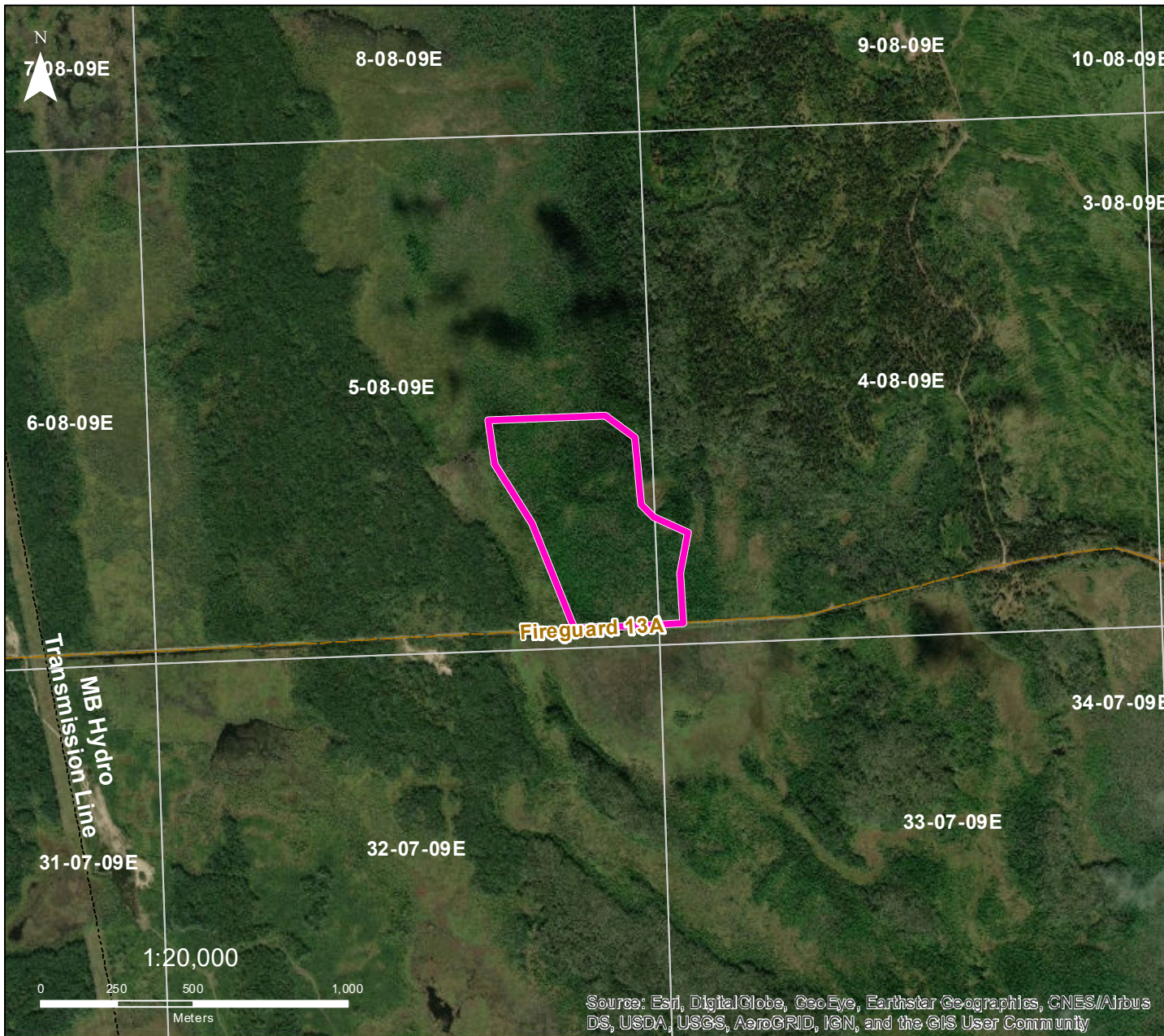


-BEAUSEJOUR, NORTH & SOUTH WHITESHELL - Designated Cutting Areas



DISTRICT	DCA ID	PRODUCT	Season	Access Condition	Suggestion	Location
BEAUSEJOUR	300	TL Fuel Wood	Winter	Good	Truck/Snowmobile	Sec 5 - Twp 8 - Rge 9E
	302	TA/WS/BF/BP Fuel Wood	All	Good	Truck/Snowmobile	Sec 1 - Twp 9 - Rge 9E
	303	JP/TA/BS Fuel Wood	All	Good	Truck	Sec 7 - Twp 8 - Rge 10E
	307	JP/TA/WS/TL Fuel Wood	All	Good	Truck/Machine	Sec 19 - Twp 10 - Rge 11E
	310	JP Fire Killed	All	Good	Truck/Machine	Sec 4 - Twp 7 - Rge 11E
	312	TA/BS/BF/TL Fuel Wood/Post	All	Good	Truck	Sec 5 - Twp 11 - Rge 10E
	315	TA/WB/JP/BP Fuel Wood	All	Good	Truck	Sec 36 - Twp 12 - Rge 9E
NORTH WHITESHELL	400	BS/TL/TA/WB Fuel Wood	Winter	Fair	Machine	Sec 27 - Twp 11 - Rge 12E
SOUTH WHITESHELL	500	JP/TA/WB Fuel Wood (10% Dead Standing)	All	Good	Truck/Machine	Sec 8 - Twp 7 - Rge 13E
	503	JP Fuel Wood	Summer	Good	Truck/Machine	Sec 23 - Twp 7 - Rge 12E



DESIGNATED CUTTING AREA 300

Beausejour

- FMU 24 -

Sec 5 - Twp 8 - Rge 9E

 Cutting Area

Location:

From jct of TransCanada Hwy & Hwy 302 travel east on TransCanada Hwy for 7.2 km to Fireguard 13. Travel south for 5 km to Fireguard 13A. Travel east for 2.7 km.

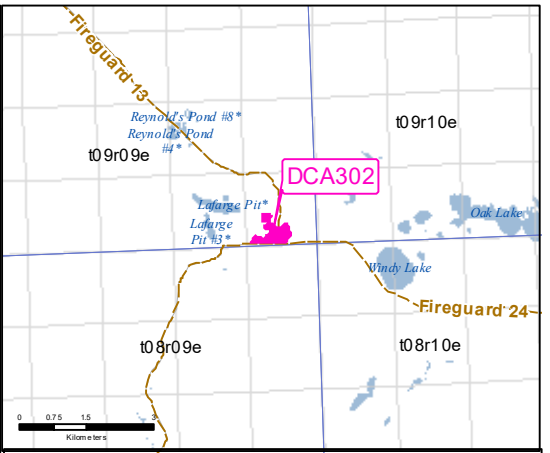
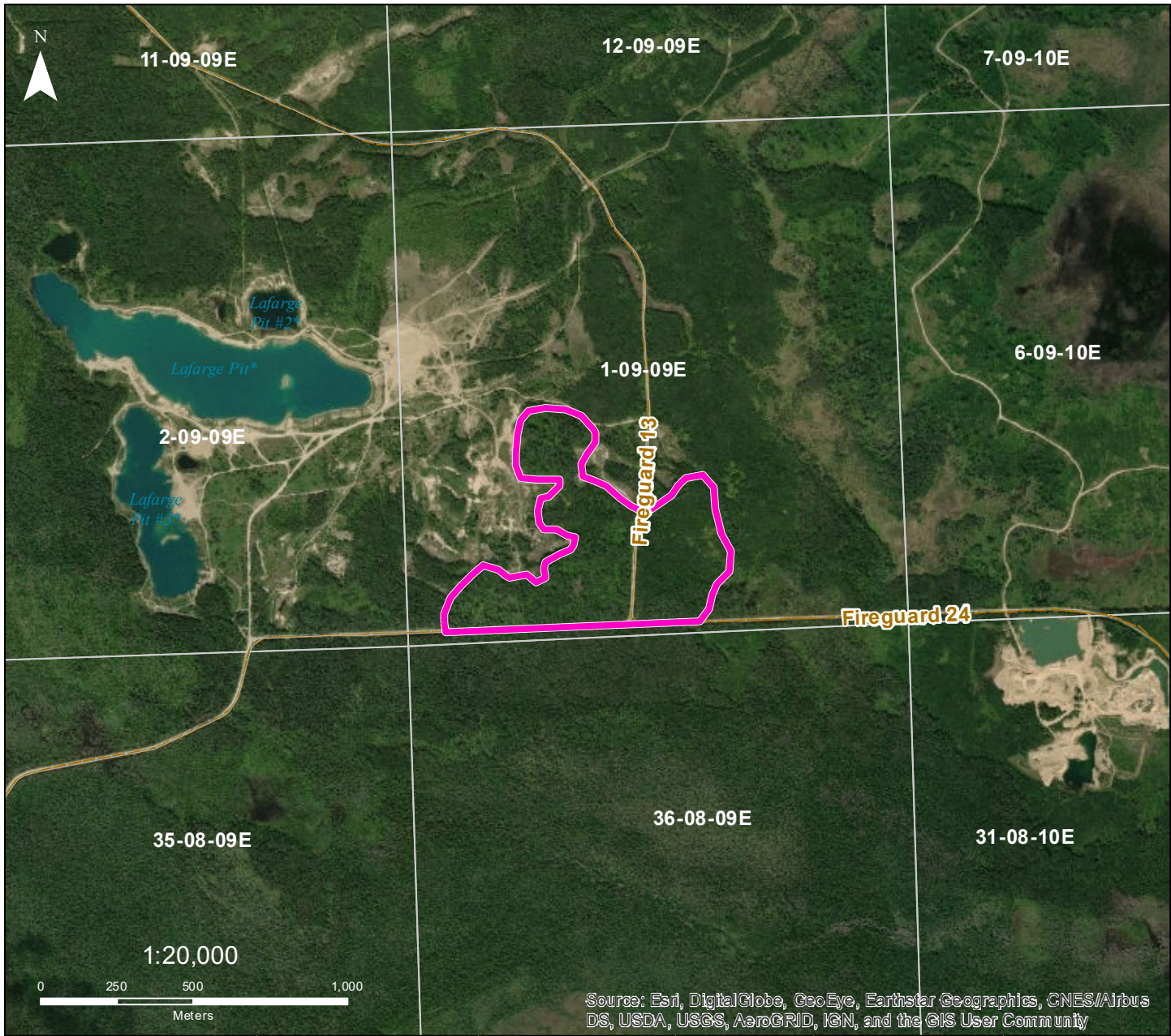
General Instructions:

Any species (excluding Elm), green or dry, can be removed from the harvest areas. White Birch has a maximum harvest limit of 5m³

INFO: Do not leave debris on road/trail.

NAD1983 UTM ZONE 14N
Forestry Branch
Agriculture and Resource Development

Dominant Species	Product	Species Condition	Season	Access Condition	Suggestion
Tamarack	Fuel Wood	Green/Dead Standing	Winter	Truck/Snowmobile	Truck/Machine
			Winter	Truck/Snowmobile	
			Winter	Truck/Snowmobile	



DESIGNATED CUTTING AREA 302

Beausejour

- FMU 24 -

Sec 1 - Twp 9 - Rge 9E

Cutting Area

Location:

From jct of TransCanada Hwy & Hwy 302 travel east on TransCanada Hwy for 12.1 km to Fireguard 13. Travel north for 5.5 km.

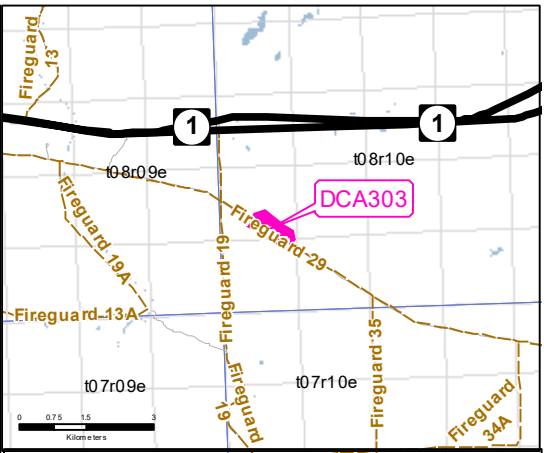
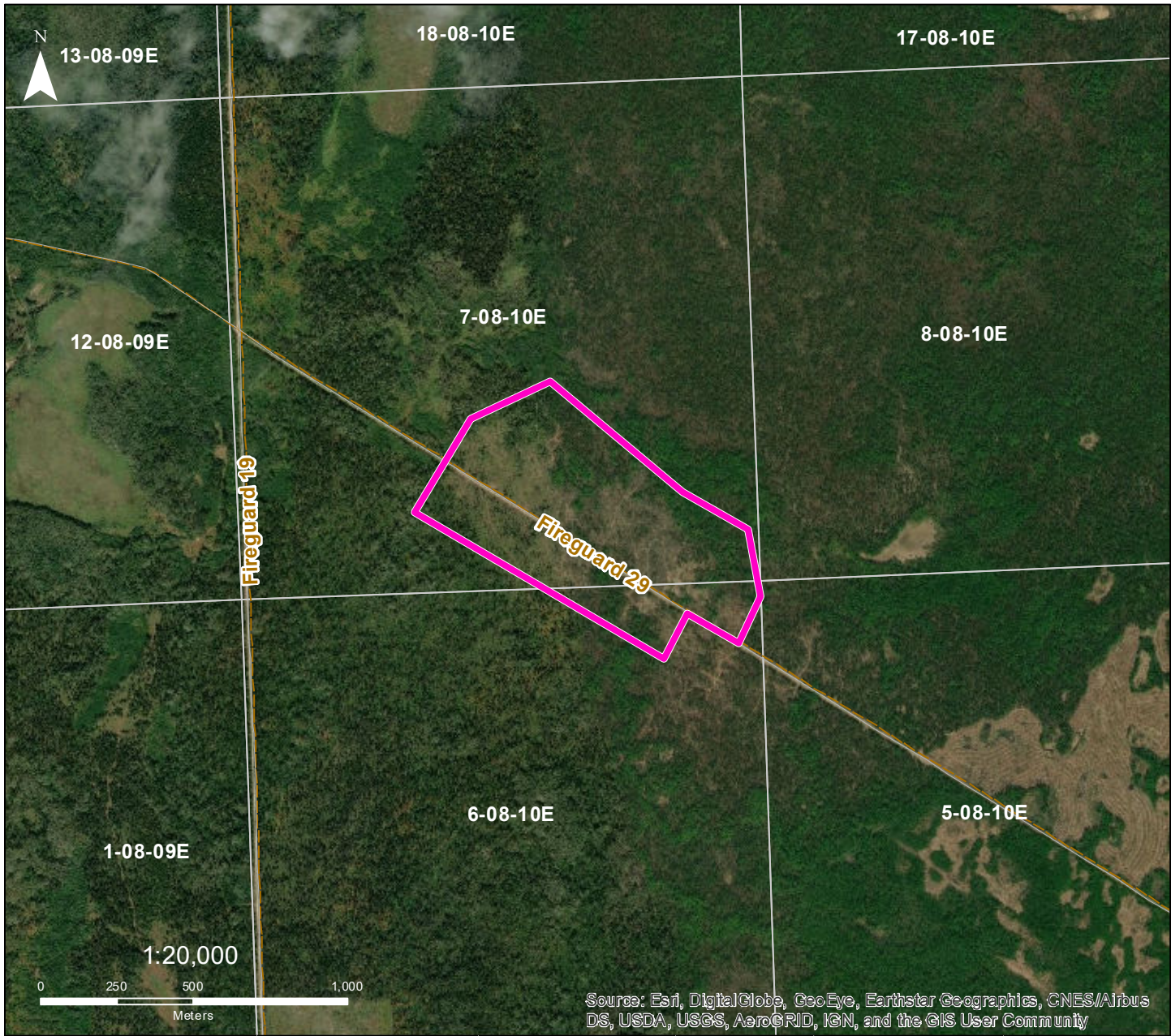
General Instructions:

Any species (excluding Elm), green or dry, can be removed from the harvest areas. White Birch has a maximum harvest limit of 5m3

INFO:

NAD1983 UTM ZONE 14N
Forestry Branch
Agriculture and Resource Development

Dominant Species	Product	Species Condition	Season	Access Condition	Suggestion
Trembling Aspen 40%	Fuel Wood	Green	All	Good	Truck/Machine
White Spruce 20%	Fuel Wood	Green	All	Good	Truck/Machine
Balsam Fir 20%	Fuel Wood	Green	All	Good	Truck/Machine
Black Poplar 10%	Fuel Wood	Good	All	Good	Truck/Machine



DESIGNATED CUTTING AREA 303

Beausejour

- FMU 24 -

Sec 7 - Twp 8 - Rge 10E

 Cutting Area

Location:

From jct of TransCanada Hwy & Hwy 11 travel west on TransCanada Hwy for 24.5 km to Fireguard 19. Travel south for 1.6 km to Fireguard 29. Travel east for 1 km.

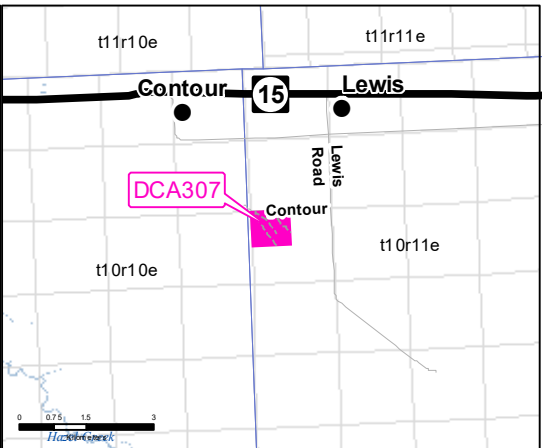
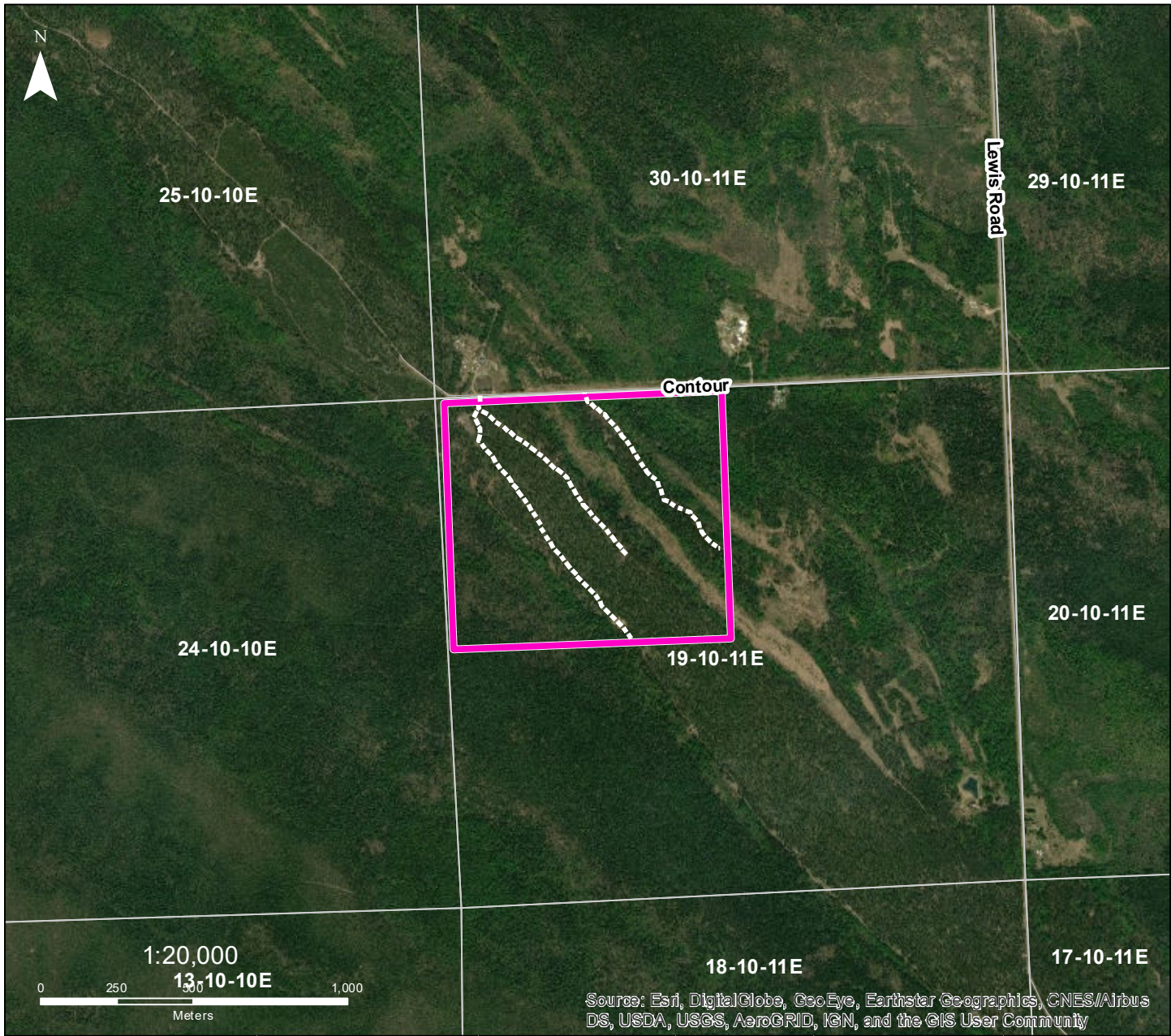
General Instructions:

Any species (excluding Elm), green or dry, can be removed from the harvest areas. White Birch has a maximum harvest limit of 5m3

INFO: Do not leave debris on road/trail.

NAD1983 UTM ZONE 14N
Forestry Branch
Agriculture and Resource Development

Dominant Species	Product	Species Condition	Season	Access Condition	Suggestion
Jack Pine 85%	Fuel Wood, Post & Rail	Green/Dead Standing	All	Good	Truck
Trembling Aspen 14%	Fuel Wood, Post & Rail	Green	All	Good	Truck
Black Spruce 1%	Fuel Wood, Post & Rail	Green	All	Good	Truck



DESIGNATED CUTTING AREA 307

Beausejour

- FMU 24 -

Sec 19 - Twp 10 - Rge 11 E

 Cutting Area

Location:

From jct of Hwy 15 & Lewis Road, travel south on Lewis Road for 2.5 km to Contour Road. Travel west for 1 km.

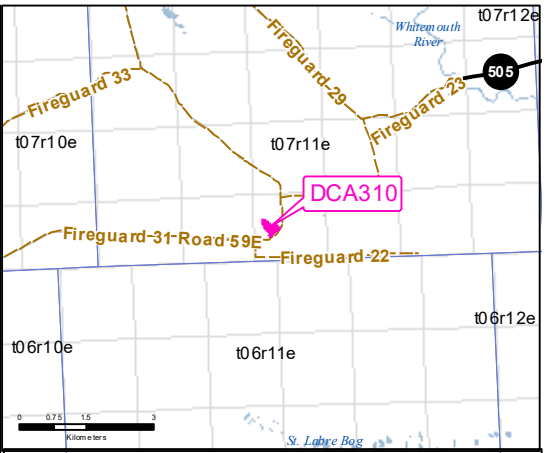
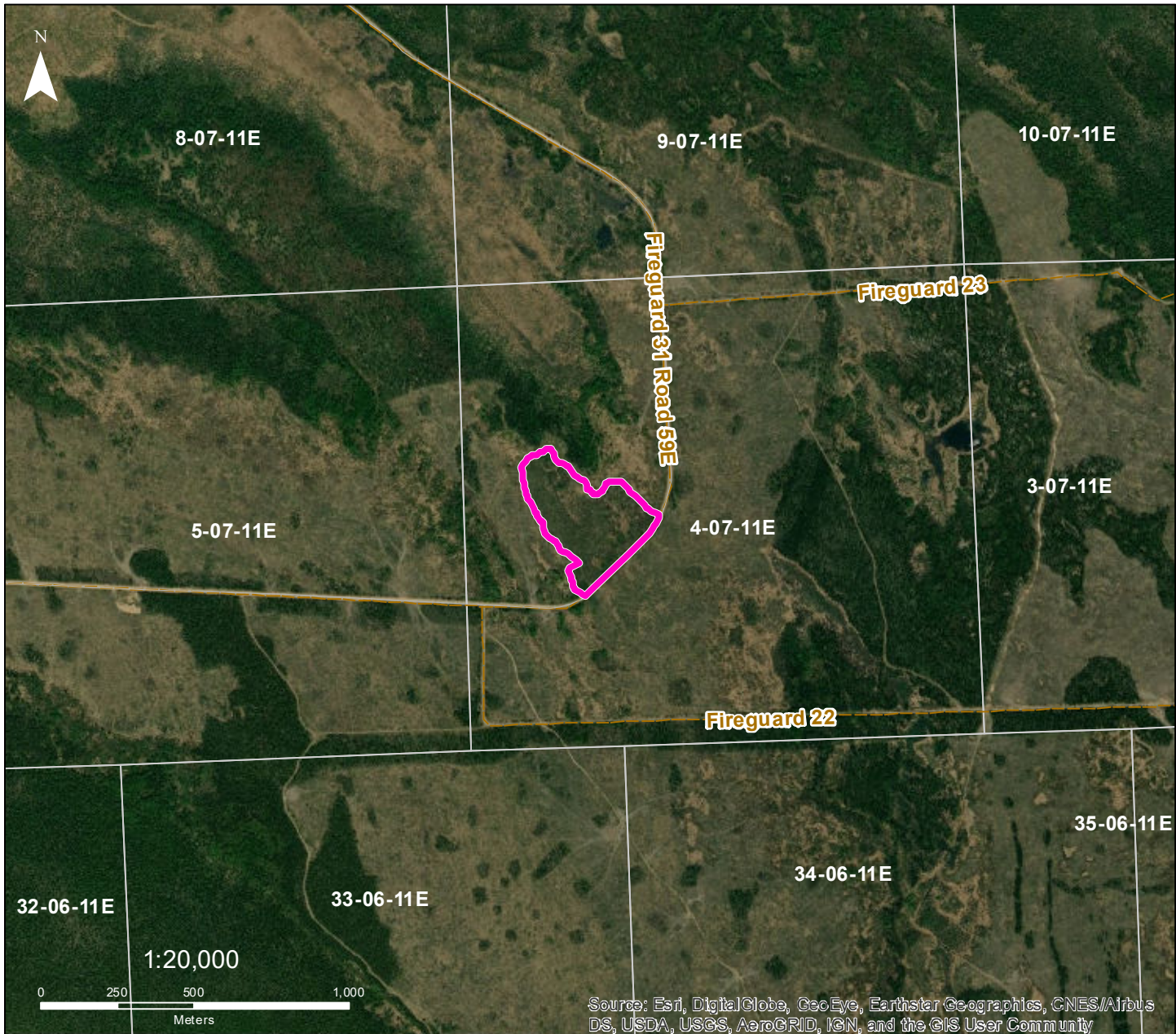
General Instructions:

Any species (excluding Elm), green or dry, can be removed from the harvest areas. White Birch has a maximum harvest limit of 5m³

INFO:

NAD1983 UTM ZONE 14N
Forestry Branch
Agriculture and Resource Development

Dominant Species	Product	Species Condition	Season	Access Condition	Suggestion
Jack Pine 40%	Fuel Wood	Green	All	Good	Truck/Machine
Trembling Aspen 30%	Fuel Wood	Green	All	Good	Truck/Machine
White Spruce 20%	Fuel Wood	Green	All	Good	Truck/Machine
Tamarack 5%	Fuel Wood	Green	All	Good	Truck Machine



DESIGNATED CUTTING AREA 310

Beausejour

- FMU 24 -

Sec 4 - Twp 7 - Rge 11E

 Cutting Area

Location:

From jct of TransCanada Hwy & Hwy 11, travel west on TransCanada Hwy for 13.6 km to Fireguard 31. Travel south for 15.5 km.

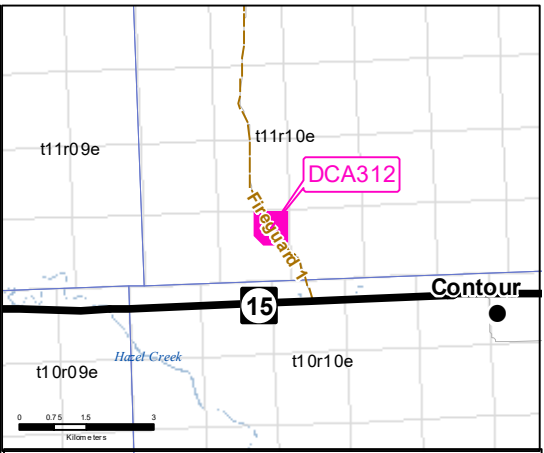
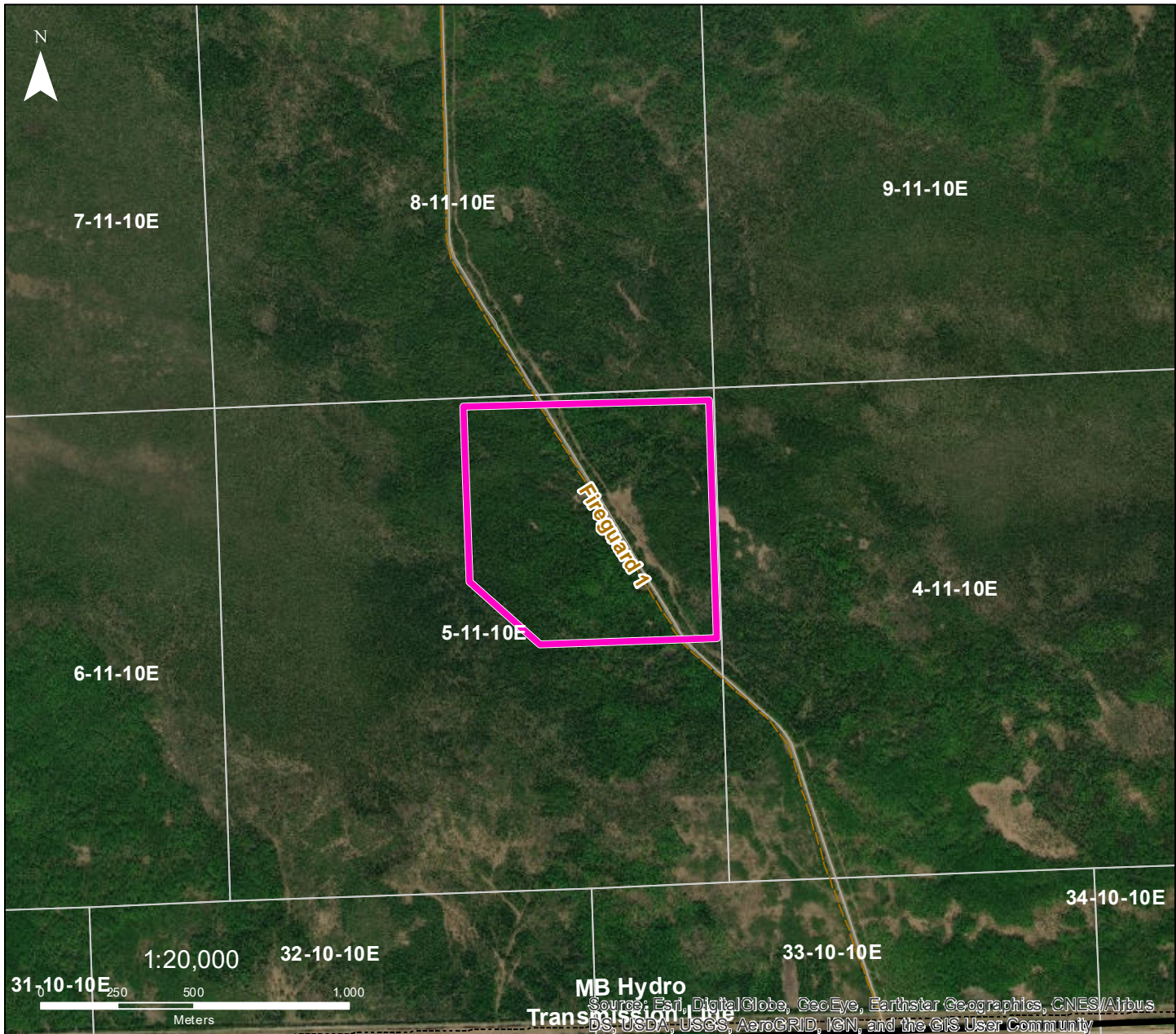
General Instructions:

Any species (excluding Elm), green or dry, can be removed from the harvest areas. White Birch has a maximum harvest limit of 5m3

INFO: Do not park on road, do not put/leave debris on road.

NAD1983 UTM ZONE 14N
Forestry Branch
Agriculture and Resource Development

Dominant Species	Product	Species Condition	Season	Access Condition	Suggestion
Jack Pine 100%	Fuel Wood	Fire Killed	All	Good	Truck/Machine



DESIGNATED CUTTING AREA 312

Beausejour

- FMU 24 -

Sec 5 - Twp 11 - Rge 10E

 Cutting Area

Location:

From jct of Hwy 11 & Hwy 15, travel west on Hwy 15 for 18.8 km to Fireguard 1. Travel north for 1.5 km.

General Instructions:

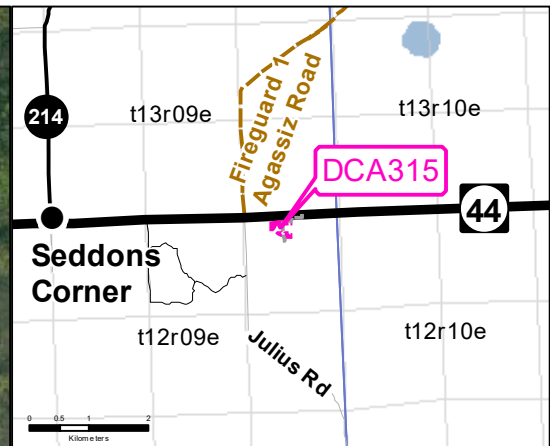
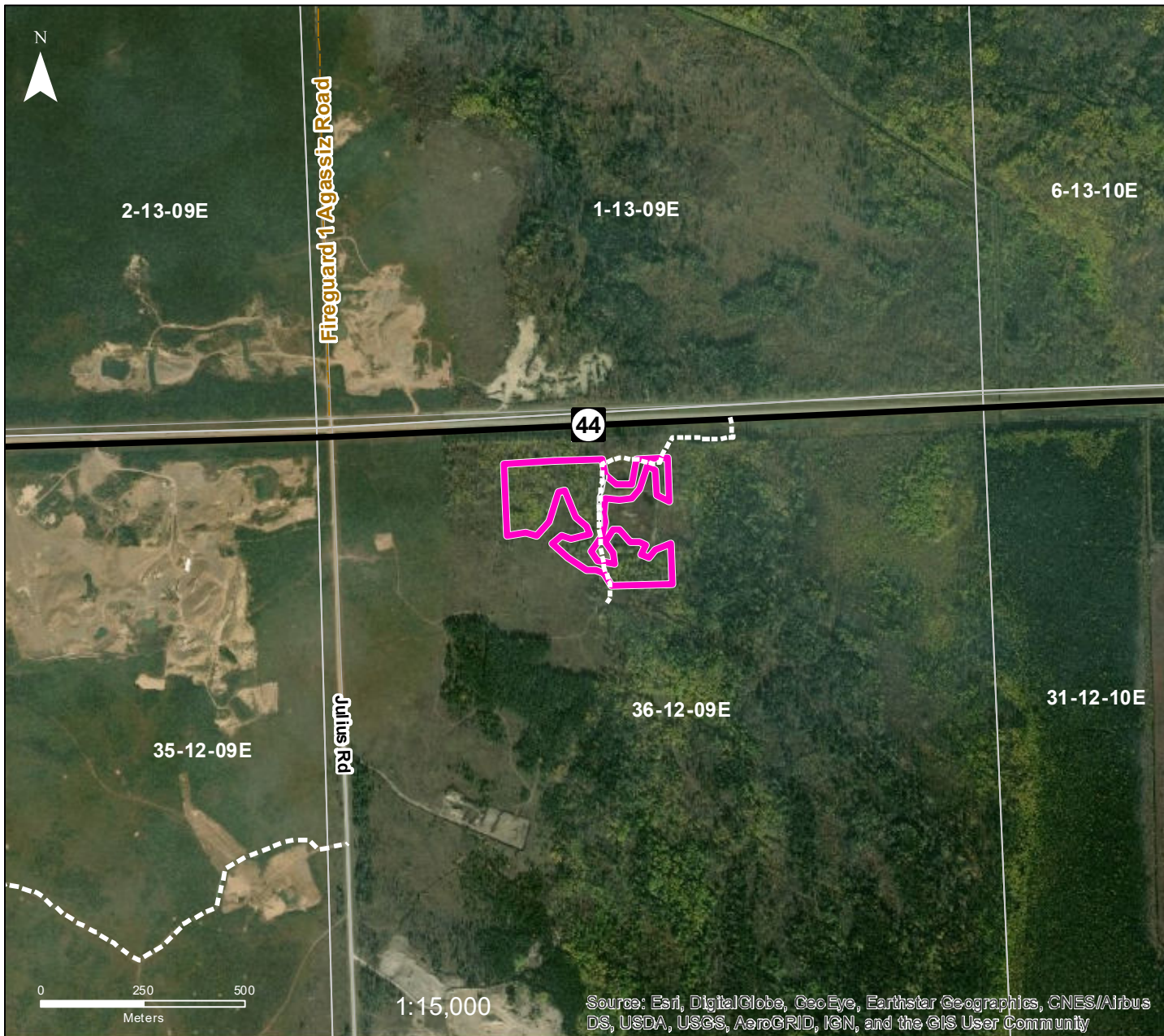
Any species (excluding Elm), green or dry, can be removed from the harvest areas. White Birch has a maximum harvest limit of 5m³

INFO: No harvesting in SW corner. Do not leave debris on road/trail.

NAD1983 UTM ZONE 14N


Forestry Branch
Agriculture and Resource Development

Dominant Species	Product	Species Condition	Season	Access Condition	Suggestion
Trembling Aspen 15%	Fuel Wood, Post & Rail	Green	All	Good	Truck
Black Spruce 30%	Fuel Wood	Green/Dead Standing	All	Good	Truck
Balsam Fir 25%	Fuel Wood	Green	All	Good	Truck
Tamarack 15%	Fuel Wood	Green	All	Good	Truck



DESIGNATED CUTTING AREA 315

Beausejour
- FMU 24 -
Sec 36 - Twp 12 - Rge 9E

 Cutting Area

Location:

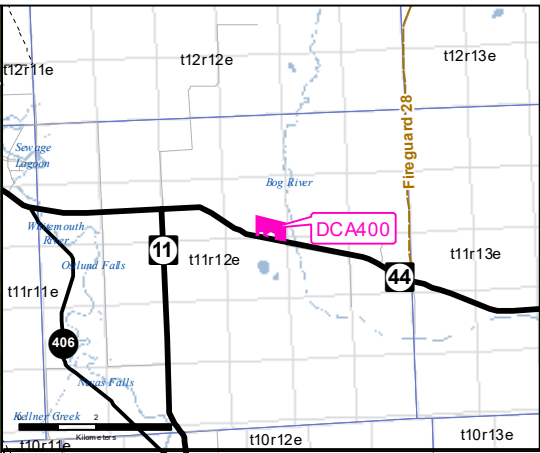
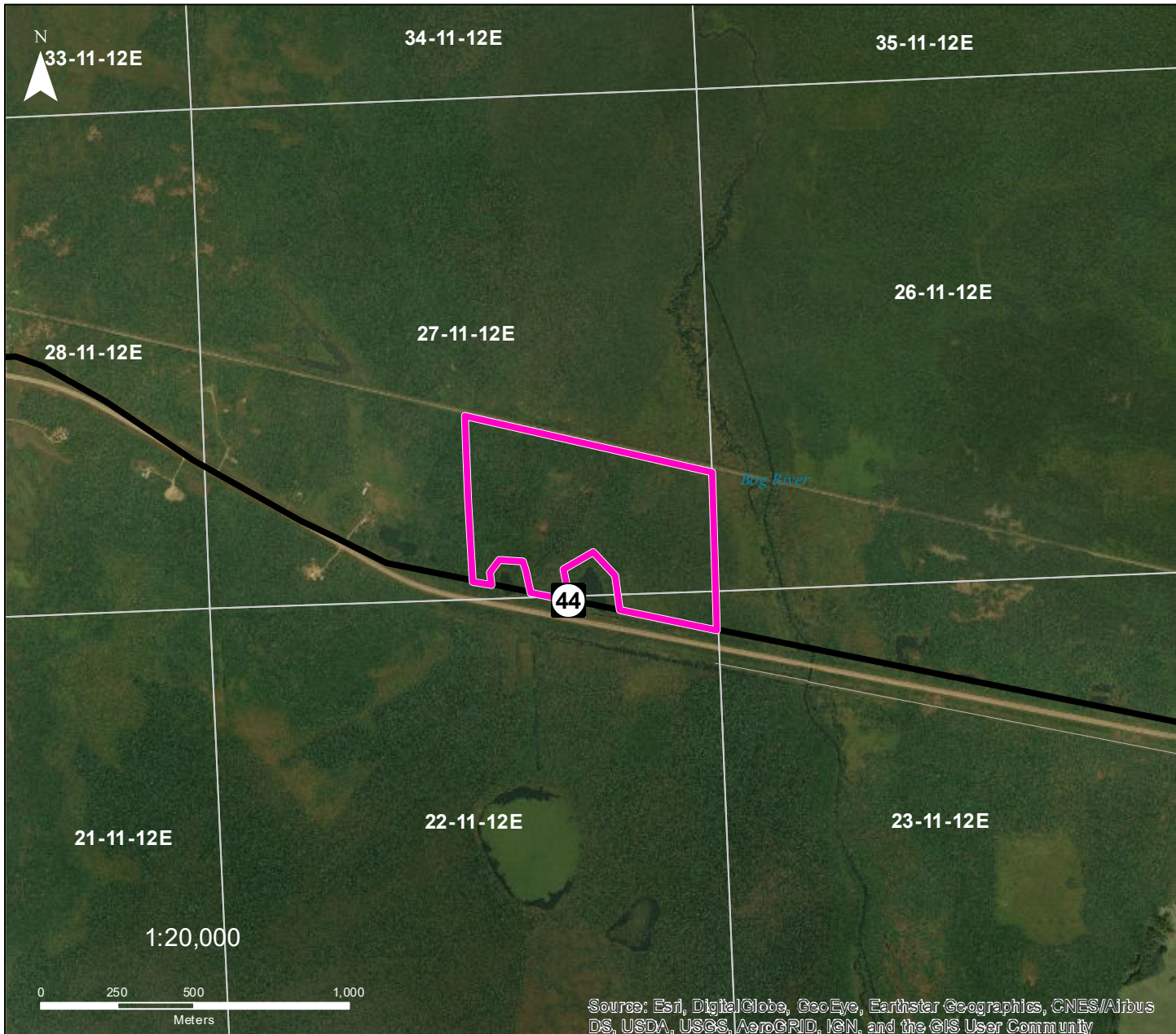
General Instructions:
Any species (excluding Elm), green or dry, can be removed from the harvest areas. White Birch has a maximum harvest limit of 5m³

INFO:

NAD1983 UTM ZONE 14N
Forestry Branch
Agriculture and Resource Development

Dominant Species	Product	Species Condition	Season	Access Condition	Suggestion
Trembling Aspen 80%	Fuel Wood	Green	All	Good	Truck
White Birch 10%	Fuel Wood	Green	All	Good	Truck
Jack Pine 10%	Fuel Wood	Green	All	Good	Truck
Balsam Poplar	Fuel Wood	Green	All	Good	Truck

Source: Esri, DigitalGlobe, GeoEye, Earthstar Geographics, CNES/Airbus DS, USDA, USGS, AeroGRID, IGN, and the GIS User Community



DESIGNATED CUTTING AREA 400

North Whiteshell

- FMU 24 -

Sec 27 - Twp 11 - Rge 12 E

 Cutting Area

Location:

From jct of Hwy 11 & Hwy 44 (Elma turnoff), travel east on Hwy 44 for 2.6 km.

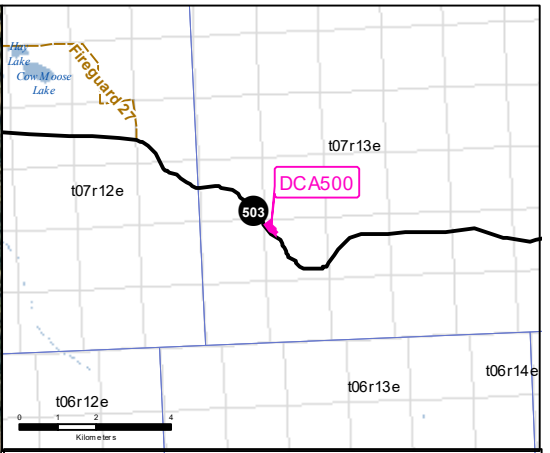
General Instructions:

Any species (excluding Elm), green or dry, can be removed from the harvest areas. White Birch has a maximum harvest limit of 5m³

INFO: Stay on south side of railroad tracks

NAD1983 UTM ZONE 14N
Forestry Branch
Agriculture and Resource Development

Dominant Species	Product	Species Condition	Season	Access Condition	Suggestion
Black Spruce 65%	Fuel Wood, Post & Rail	Green/Dead Standing	Winter	Fair	Machine
Tamarack 15%	Fuel Wood	Green	Winter	Fair	Machine
Trembling Aspen 10%	Fuel Wood	Green	Winter	Fair	Machine
White Birch 10%	Fuel Wood	Green/Dead Standing	Winter	Fair	Machine



DESIGNATED CUTTING AREA 500

South Whiteshell

- FMU 24 -

Sec 8 - Twp 7 - Rge 13E

Cutting Area

Location:

From jct of TransCanada Hwy & Hwy 11, travel east on TransCanada Hwy for 2.1 km to Hwy 503. Travel south on Hwy 503 for 8.8 km to intersection of Hwy 505. Travel East on Hwy 503 for 9.8 km.

General Instructions:

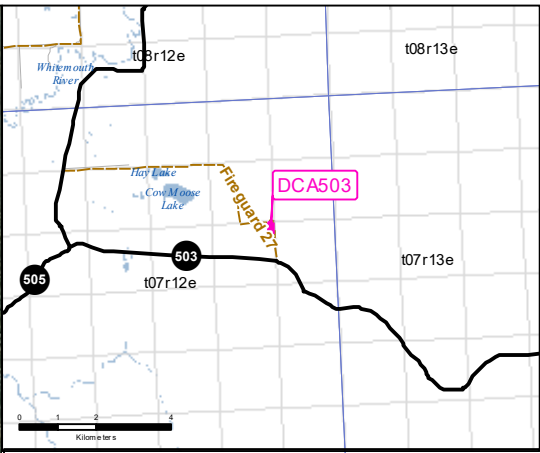
Any species (excluding Elm), green or dry, can be removed from the harvest areas. White Birch has a maximum harvest limit of 5m3

INFO:

NAD1983 UTM ZONE 14N
Forestry Branch
Agriculture and Resource Development

Dominant Species	Product	Species Condition	Season	Access Condition	Suggestion
Jack Pine 40%	Fuel Wood	Green	All	Good	Truck/Machine
Trembling Aspen 40%	Fuel Wood	Green	All	Good	Truck/Machine
White Spruce 20%	Fuel Wood	Green	All	Good	Truck/Machine

Source: Esri, DigitalGlobe, GeoEye, Earthstar Geographics, CNES/Airbus DS, USDA, USGS, AeroGRID, IGN, and the GIS User Community



DESIGNATED CUTTING AREA 503

South Whiteshell
 - FMU 24 -
 Sec 23 - Twp 7 - Rge 12E

 Cutting Area

Location:

From jct of TransCanada Hwy & Hwy 11, travel east on TransCanada Hwy for 2.1 km to Hwy 503. Travel south on Hwy 503 for 8.8 km to intersection of Hwy 505. Travel East on Hwy 503 for 5.5 km. North on Trail 800m.

General Instructions:

Any species (excluding Elm), green or dry, can be removed from the harvest areas. White Birch has a maximum harvest limit of 5m³

INFO: No in block access maintained. West side ONLY.

NAD1983 UTM ZONE 14N
 Forestry Branch
 Agriculture and Resource Development

Dominant Species	Product	Species Condition	Season	Access Condition	Suggestion
Jack Pine 100%	Fuel Wood	Green/Dead Standing	Summer	Good	Truck/Machine