

# Influenza Surveillance Report 2019–2020

**Week 12 (Mar. 15 – 21, 2020)**

Data extracted : Mar. 27, 2020 at 11:00 am

**Last Seasonal Report**

**Provincial Update:** Influenza A viruses continue to circulate at a high level provincially. Laboratory-confirmed influenza outbreaks continue to occur. In Week 12, of all tested respiratory patients, 21.9% were tested positive for influenza. Influenza B detections continued to decrease. Activity levels in a few syndromic indicators increased in the last two weeks likely due to increased COVID-19 activity and increased concerns over COVID-19. The number of respiratory visits to the Emergency Department increased significantly in Week 11 and decreased in Week 12 to expected levels for this time of a year. This is the final seasonal influenza surveillance report for 2019–2020.



**High  
Influenza A  
Activity**

**National Update:** As of Week 11, influenza activity continued to be reported in all regions in Canada. Influenza-like illness activity reported by sentinel practitioners and FluWatchers increased this week. Two thirds of influenza detections were influenza A, and among those subtyped, A(H1N1) continued to be the dominant subtype circulating in Canada. The highest cumulative hospitalization rates are among children under 5 years of age and adults 65 years of age and older. Hospitalizations among adults are predominantly due to influenza A, while those among children are due to a mix of influenza A and B.

**International Update:** In Week 11, laboratory confirmed flu activity as reported by clinical laboratories continued to decrease; however, influenza-like illness activity increased. Influenza severity indicators remain moderate to low overall, but hospitalization rates differ by age group, with high rates among children and young adults.

Laboratory**	This Week
Laboratory-confirmed influenza cases:	
<ul style="list-style-type: none"> <li>Influenza A: <b>38</b></li> <li>Influenza B: <b>3</b></li> </ul>	
From Sept.	
<ul style="list-style-type: none"> <li>Influenza A: <b>1158</b></li> <li>Influenza B: <b>698</b></li> </ul>	

Severity	Week 11
Severe outcomes associated with influenza:	
<ul style="list-style-type: none"> <li>Hospitalizations: <b>1</b></li> <li>ICU* admissions: <b>0</b></li> <li>Deaths: <b>0</b></li> </ul>	
From Sept.	
<ul style="list-style-type: none"> <li>Hospitalizations: <b>403</b></li> <li>ICU* admissions: <b>40</b></li> <li>Deaths: <b>29</b></li> </ul>	

Outbreaks	This Week
Laboratory-confirmed influenza outbreaks:	
<ul style="list-style-type: none"> <li>Influenza A: <b>1</b></li> <li>Influenza B: <b>0</b></li> <li>Influenza A &amp; B: <b>0</b></li> </ul>	
From Sept.	
<ul style="list-style-type: none"> <li>Influenza A: <b>32</b></li> <li>Influenza B: <b>6</b></li> <li>Influenza A &amp; B: <b>1</b></li> </ul>	

Calls	This Week
Calls to Influenza Service at Health Links–Info Santé: <b>70</b>	

Physician Visits	This Week
Visits to sentinel physicians due to ILI: <b>2.6%</b>	

Vaccine	As of Mar. 26
<ul style="list-style-type: none"> <li>Percentage of Manitoba residents immunized with the seasonal influenza vaccine: <b>26.3%</b></li> </ul>	

Antiviral	This Week
Units of antiviral dispensed from pharmacies: <b>49</b>	

ER Visits	This Week
Respiratory visits to Emergency Department (ED): <b>158/day</b>	

**Note.** \* ICU admissions were also included in hospitalizations.

\*\*Laboratory-confirmed influenza cases were reported from the provincial Laboratory Information Management System (LIMS).

Numbers are subject to change. Missed events in the current report due to a delay of submission to MHSAL will be included in later reports when data become available.

# Influenza Surveillance Report 2019–2020

Figure 1. Weekly Cases of Laboratory-Confirmed Influenza, Manitoba

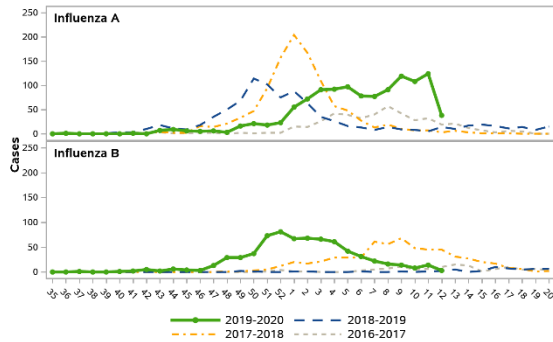


Figure 3. Average Daily Respiratory Visits to Emergency Department and % of Total Visits, Winnipeg Regional Health Authority, Manitoba

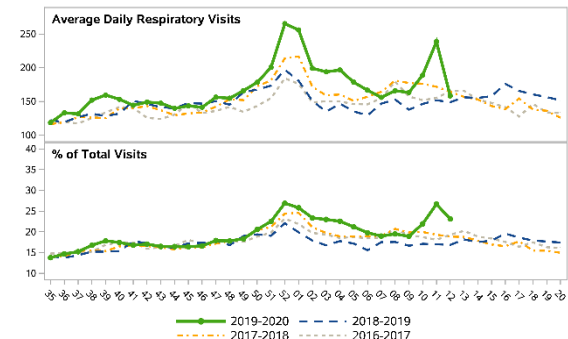


Figure 2. Weekly Influenza and ILI Outbreaks, Manitoba

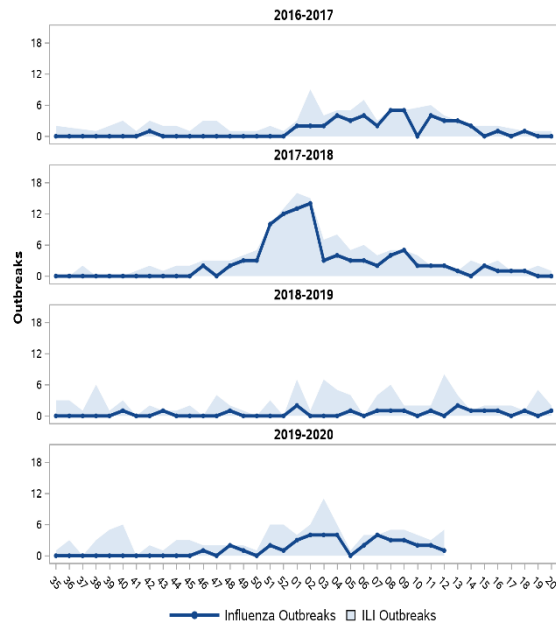


Table 1. Antiviral Resistance of Isolates by Influenza Type and Subtype since September 1, 2019

		Oseltamivir		Zanamivir	
		R*	S**	R*	S**
Canada	A(H3N2)	0	155	0	155
	A(H1N1)	1	250	0	251
	B	0	263	0	263
Manitoba	A(H3N2)	0	8	0	8
	A(H1N1)	0	21	0	21
	B	0	47	0	47

\* Resistant \*\*Sensitive

Table 2. Influenza Strain Characterization reported by National Microbiology Laboratory since September 1, 2019

Strain	Number of viruses	
	Canada	Manitoba
Influenza A (H3N2) A/Kansas/14/2017-like	55	1
Influenza A (H1N1) A/Brisbane/02/2018-like	474	26
Influenza B B/Colorado/06/2017-like	180	17
Influenza B B/Phuket/3073/13-like	2	0

As per the World Health Organization (WHO), all seasonal quadrivalent influenza vaccines for 2019–2020 in the northern hemisphere contain those strains.