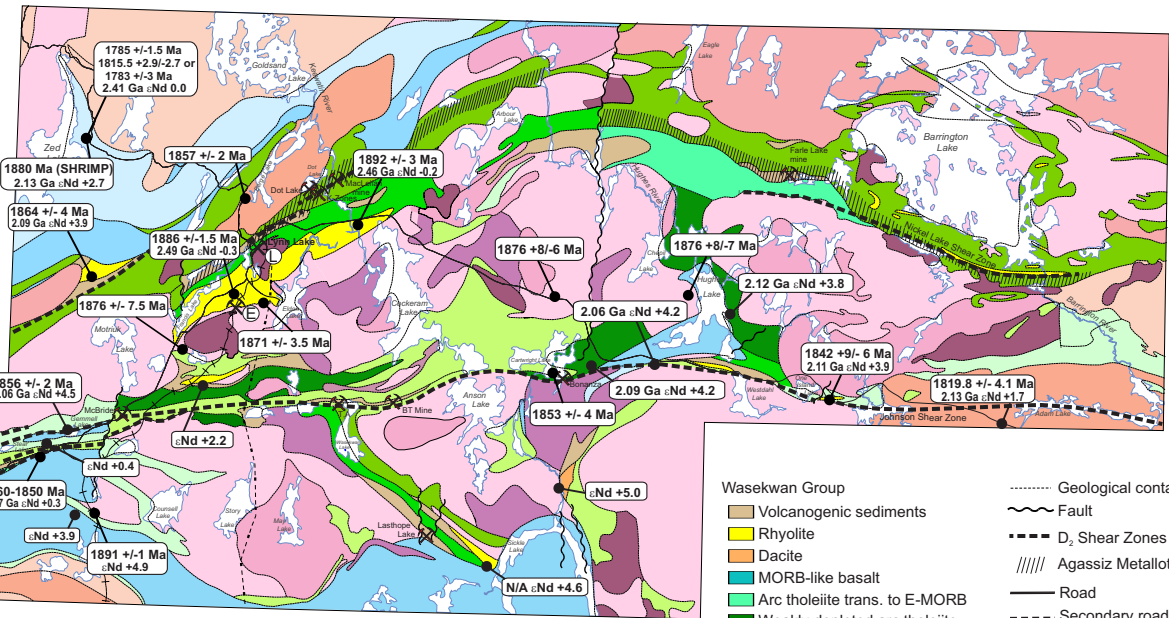
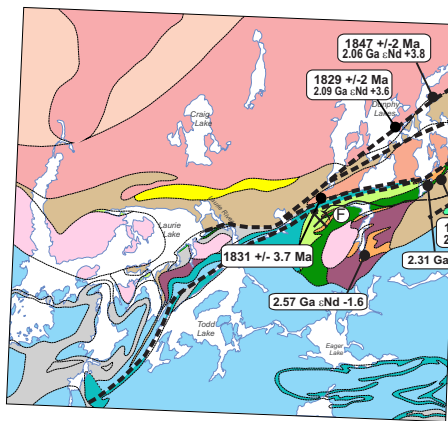
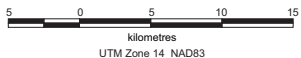
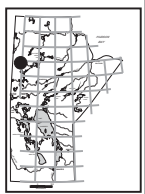


# Geochemical Units, Major Shear Zones, Geochronology and Gold Mineralization in the Lynn Lake Greenstone Belt



- Intrusive rocks (unknown age)
- Post Sickle Intrusive rocks (1.85-1.78 Ga)
- Granite, granodiorite
- Tonalite, quartz diorite
- Sickle Group
- Burntwood Group
- Ralph Lake conglomerate
- Zed Lake greywacke
- Granite, granodiorite
- Tonalite, granodiorite
- Diorite, quartz diorite
- Gabbro

- Wasekan Group**
- Volcanogenic sediments
- Rhyolite
- Dacite
- MORB-like basalt
- Arc tholeiite trans. to E-MORB
- Weakly depleted arc tholeiite
- Depleted arc tholeiite
- Enriched arc tholeiite
- Calc-alkaline basalt to andesite
- Arc Tholeiite
- Undivided Wasekan
- Geological contact
- Fault
- D<sub>2</sub> Shear Zones
- Agassiz Metallotect
- Road
- Secondary road
- Trail
- Railroad
- Powerline
- Gold Deposit
- Base-metal Deposit

325000 mE 350000 mE 375000 mE 400000 mE 425000 mE

6300000 mN

6275000 mN

NEU 0000039

NEU 0005123