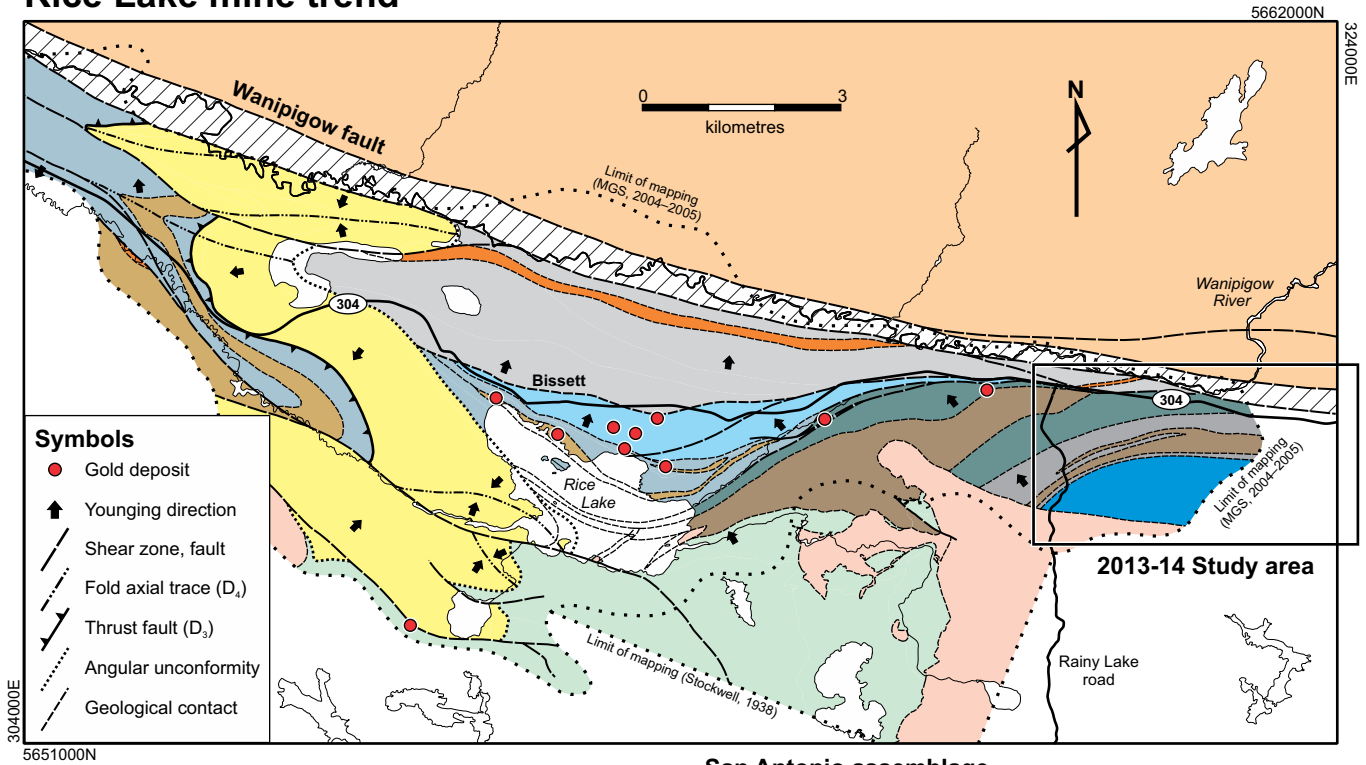


# Rice Lake mine trend



## Gem assemblage

### Round Lake unit

- Intermediate to felsic epiclastic rocks

### Townsite unit

- Felsic volcaniclastic rocks
- Gabbro
- Felsic epiclastic rocks; minor basalt flows

### Rainy Lake Road unit

- Basalt flows
- Gabbro
- Volcanic sandstone, mudstone and conglomerate
- Felsic volcanic and volcaniclastic rocks

## San Antonio assemblage

- Arenite, conglomerate

## Ross River plutonic suite

- Quartz-feldspar porphyry
- Tonalite-granodiorite

## Bidou assemblage

- Volcaniclastic and epiclastic rocks

## North Caribou terrane

- Tonalite-granodiorite; minor supracrustal rocks

## 2013-14 Study area

Rainy Lake road

Unconformity

Intrusive contact

Conformable contact

Wanipigow fault