

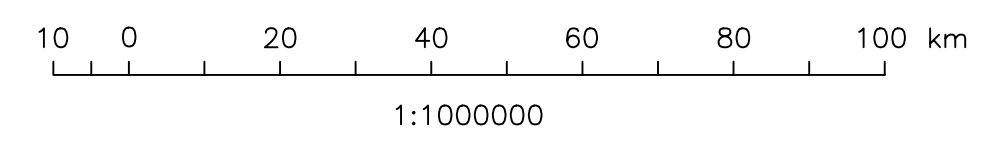
STRUCTURE CONTOUR & ISOPACH MAP DEVONIAN – DAWSON BAY FORMATION

- STRUCTURE CONTOUR (250' Contour Interval)
- - - ISOPACH CONTOUR (10' Contour Interval)
- ±250
10 ELEVATION ABOVE (BELOW) SEA LEVEL DATUM
THICKNESS OF DAWSON BAY FORMATION
- ▨ DAWSON BAY FORMATION (outcrop area)
- ▩ DAWSON BAY FORMATION (subcrop area unconformably overlain by Jurassic or Cretaceous Strata)

NOTE: Local structure anomalies in the area northwest of Riding Mountain National Park probably are due to draping over buried Winnipegosis reefs as a result of "off-reef" salt collapse.

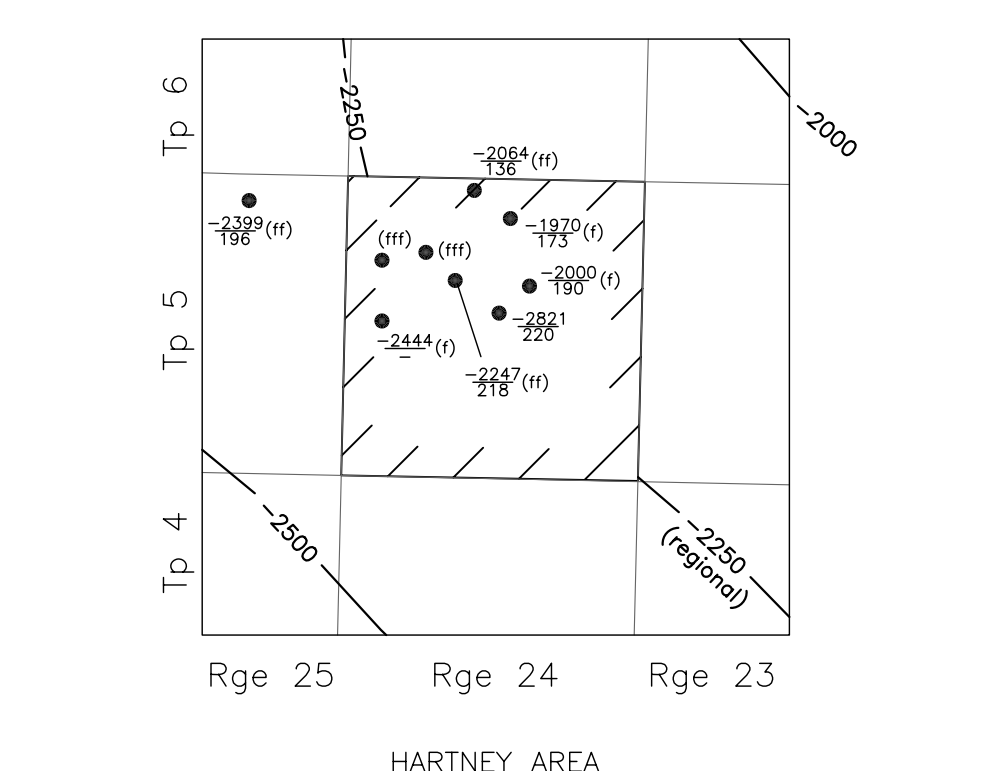
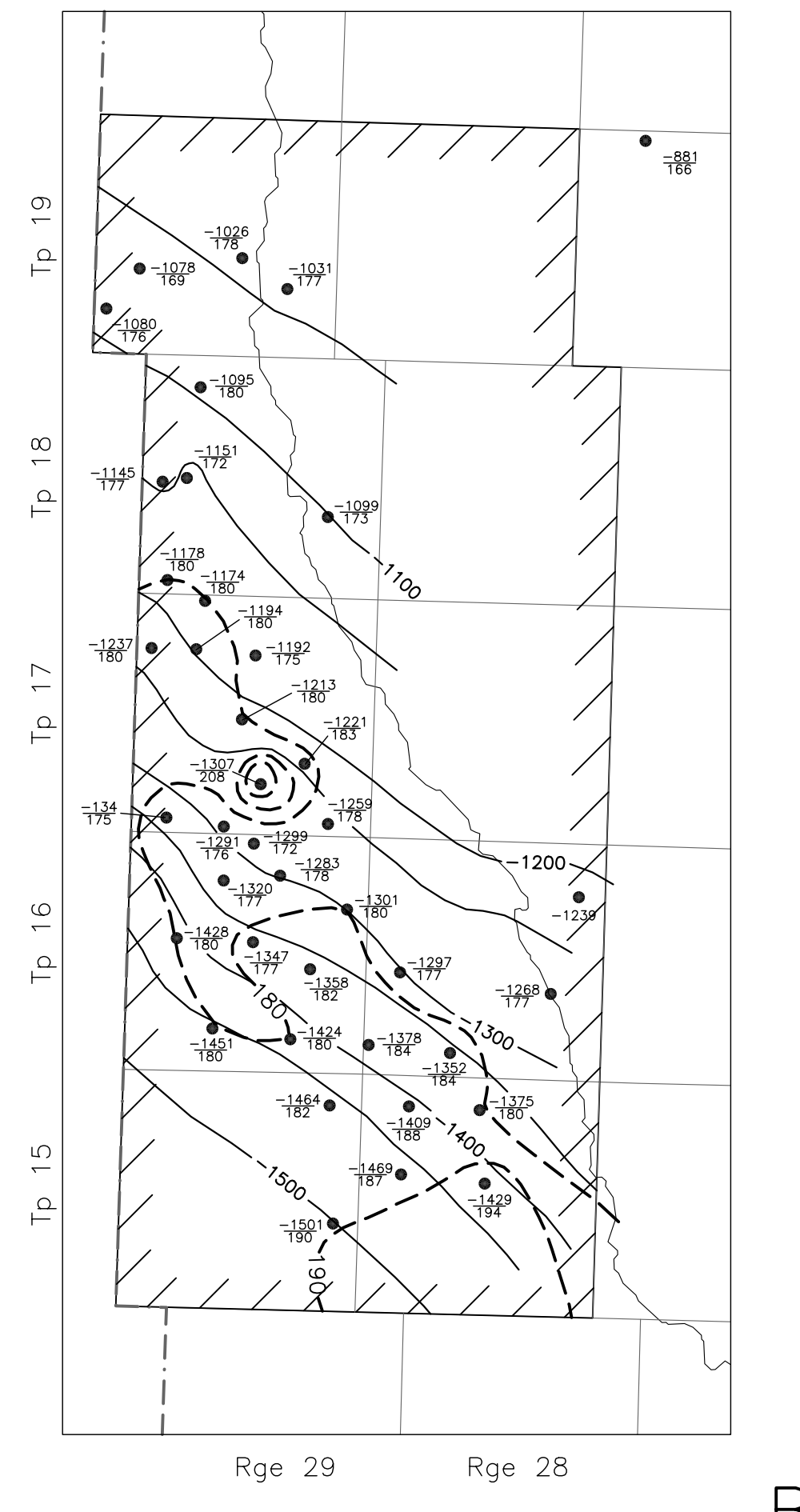
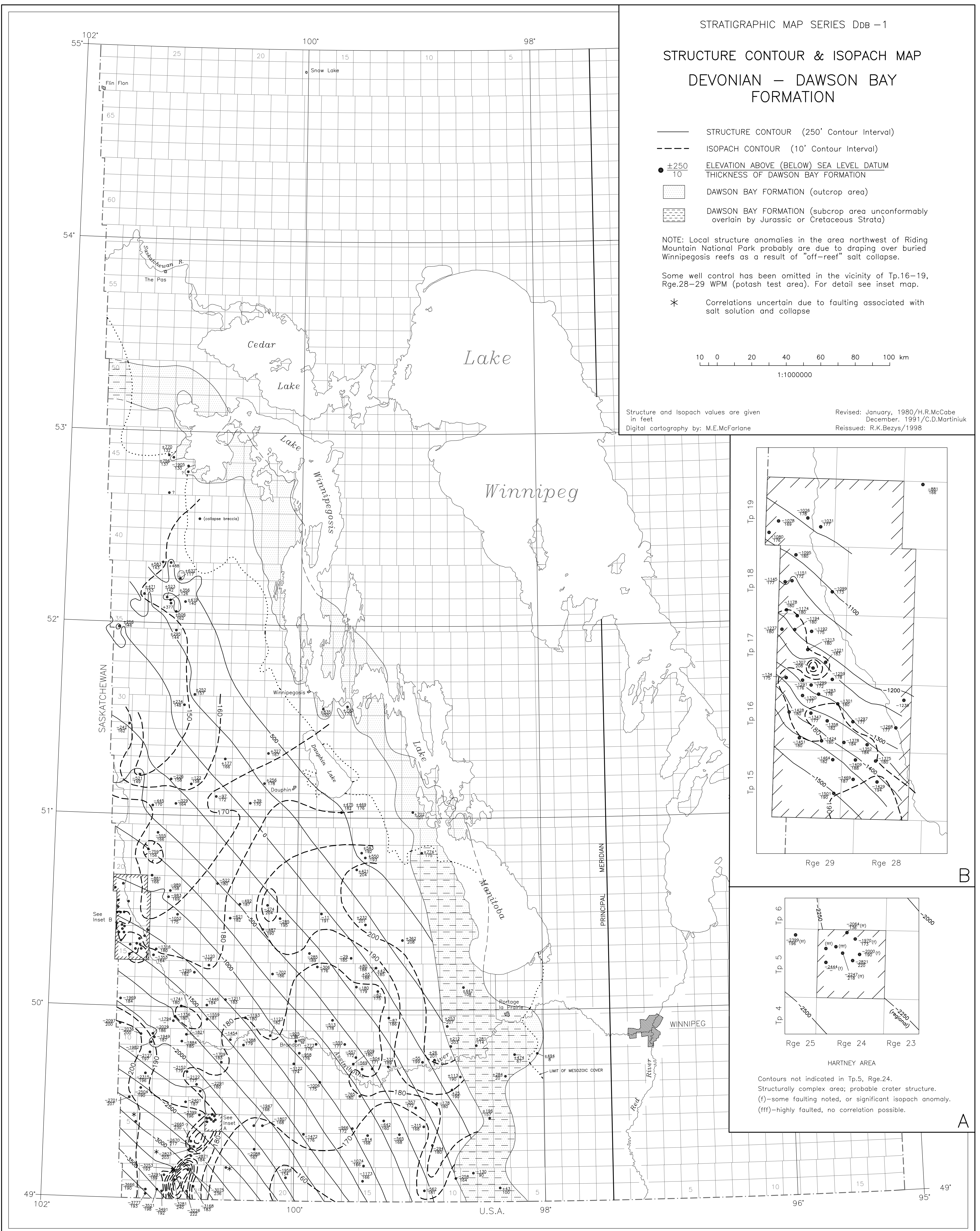
Some well control has been omitted in the vicinity of Tp.16-19, Rge.28-29 WPM (potash test area). For detail see inset map.

* Correlations uncertain due to faulting associated with salt solution and collapse



Structure and Isopach values are given in feet
Digital cartography by: M.E.McFarlane

Revised: January, 1980/H.R.McCabe
December, 1991/C.D.Martiniuk
Reissued: R.K.Bezys/1998



Contours not indicated in Tp.5, Rge.24.
Structurally complex area; probable crater structure.
(f)—some faulting noted, or significant isopach anomaly.
(fff)—highly faulted, no correlation possible.

B

A