

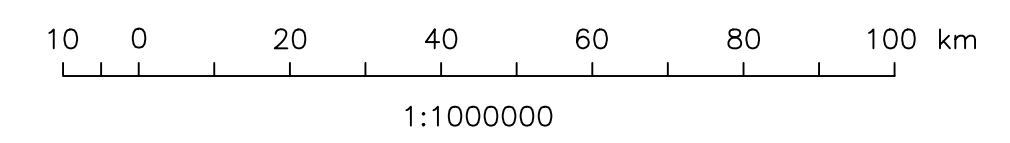
STRUCTURE CONTOUR & ISOPACH MAP
DEVONIAN - SOURIS RIVER
FORMATION

- STRUCTURE CONTOUR (250' Contour Interval)
- - - ISOPACH CONTOUR (20' Contour Interval)
- ±250 / 20 ELEVATION ABOVE (BELOW) SEA LEVEL DATUM THICKNESS OF SOURIS RIVER FORMATION
- ▨ SOURIS RIVER FORMATION (outcrop area)
- ▩ SOURIS RIVER FORMATION (subcrop area - unconformably overlain by Jurassic or Cretaceous Strata)
- * Correlations uncertain due to faulting associated with salt solution and collapse

NOTE: Local structural anomalies in the Swan River area probably are due to draping over buried Winnipegosis reefs as a result of "off reef" salt collapse. For details in Swan River area, see map Dsr-2.

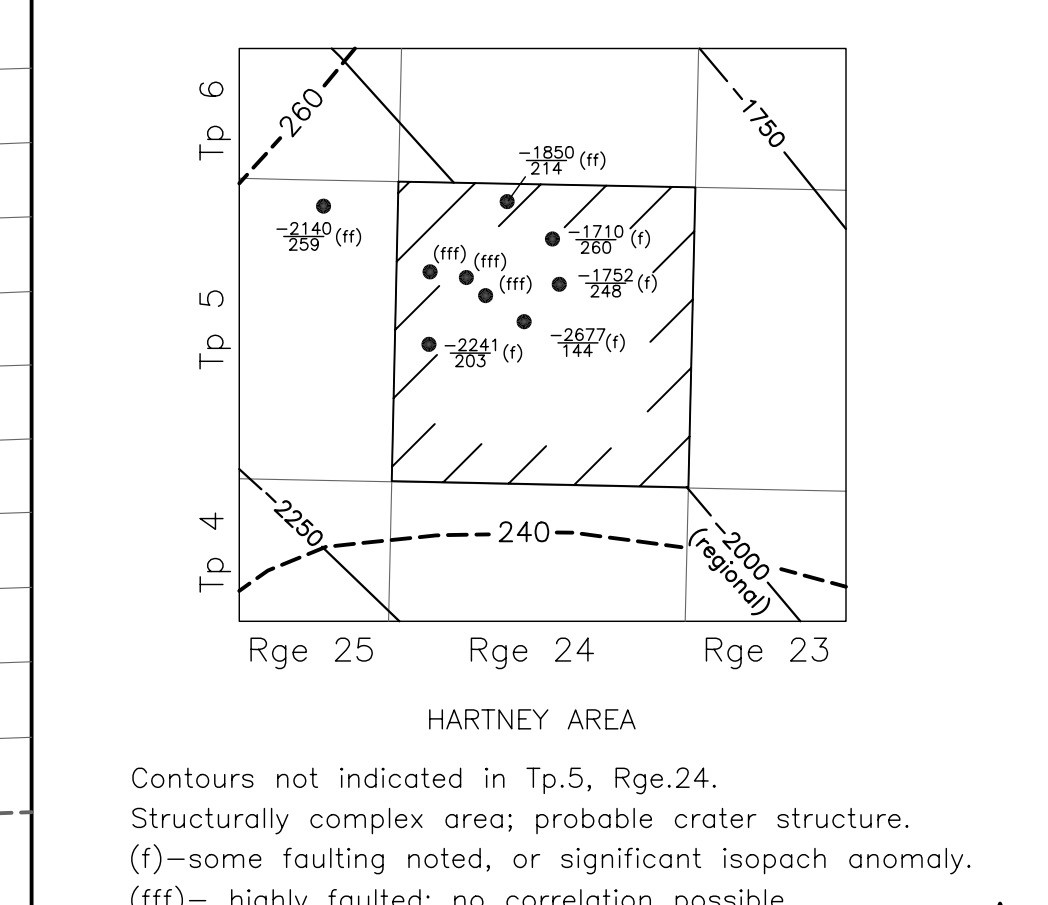
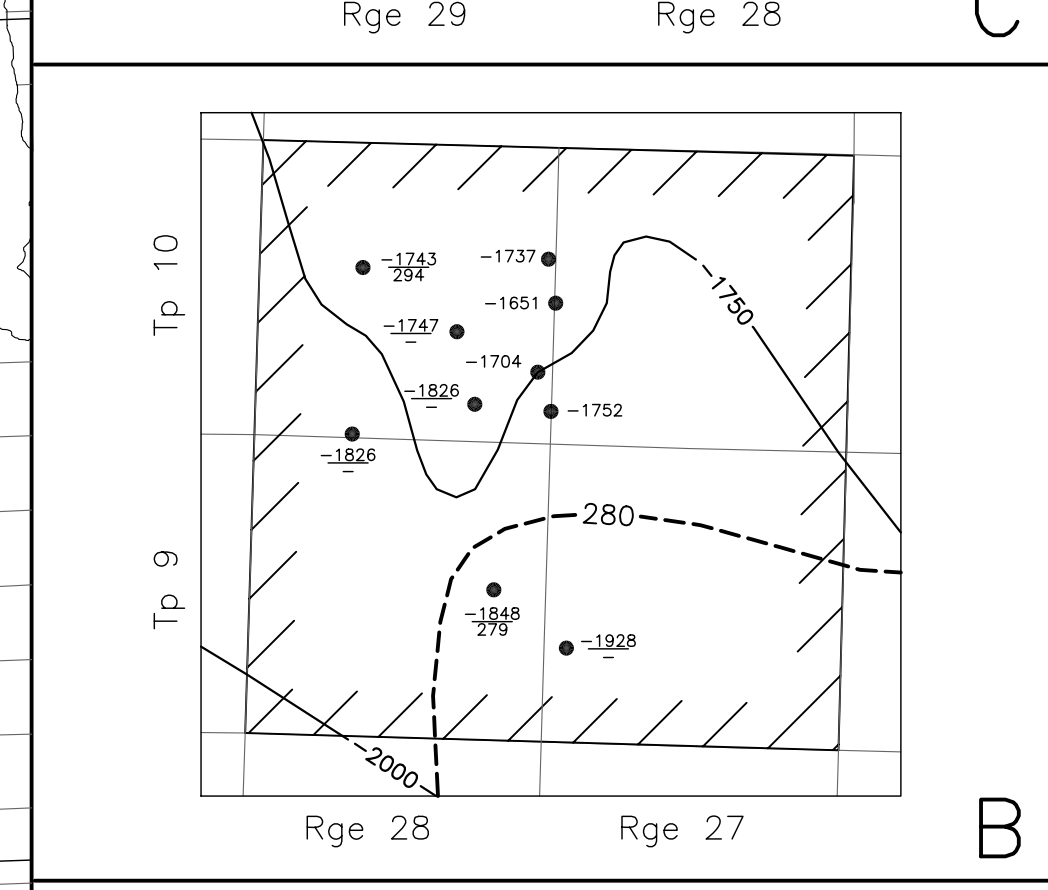
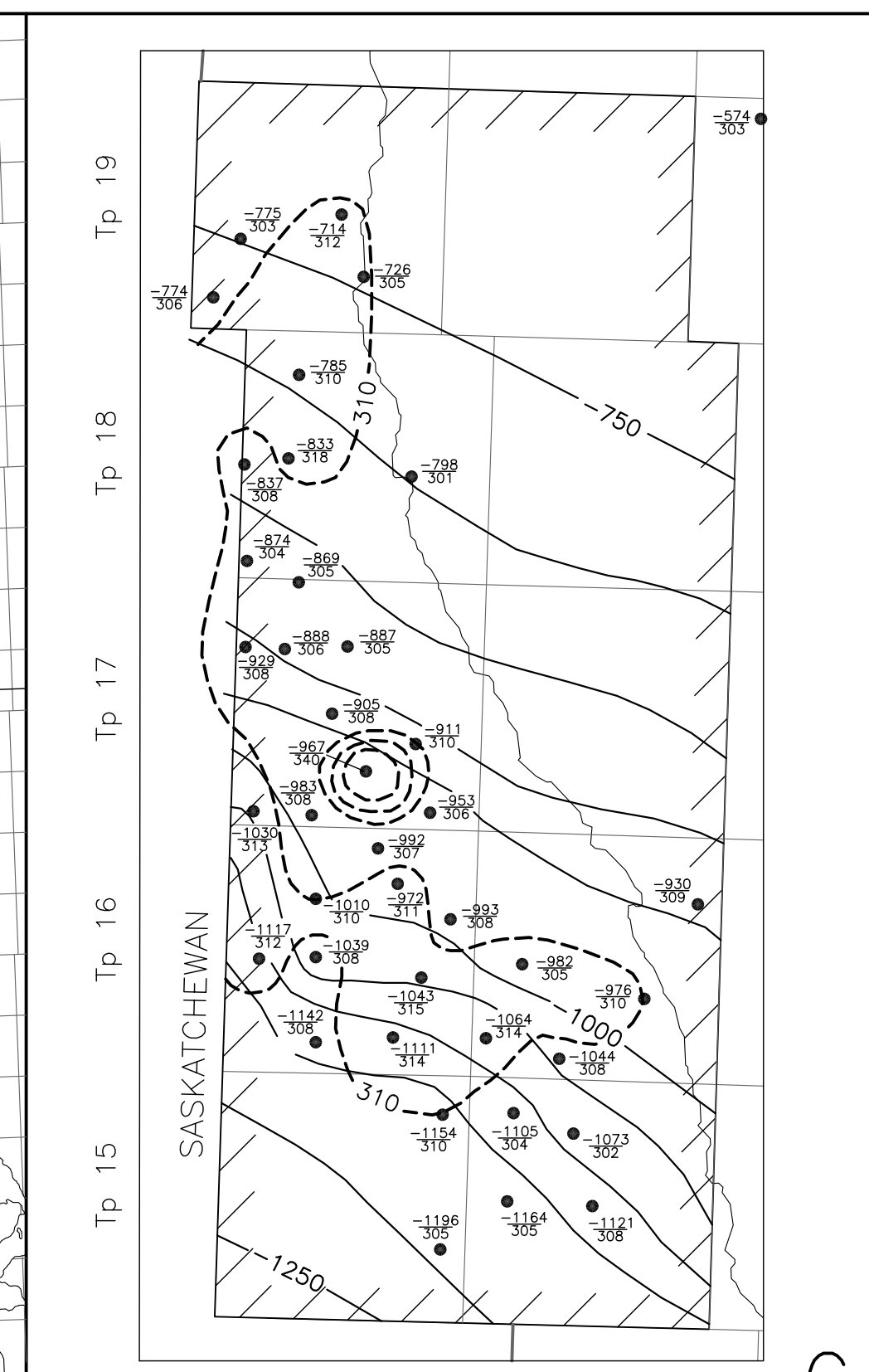
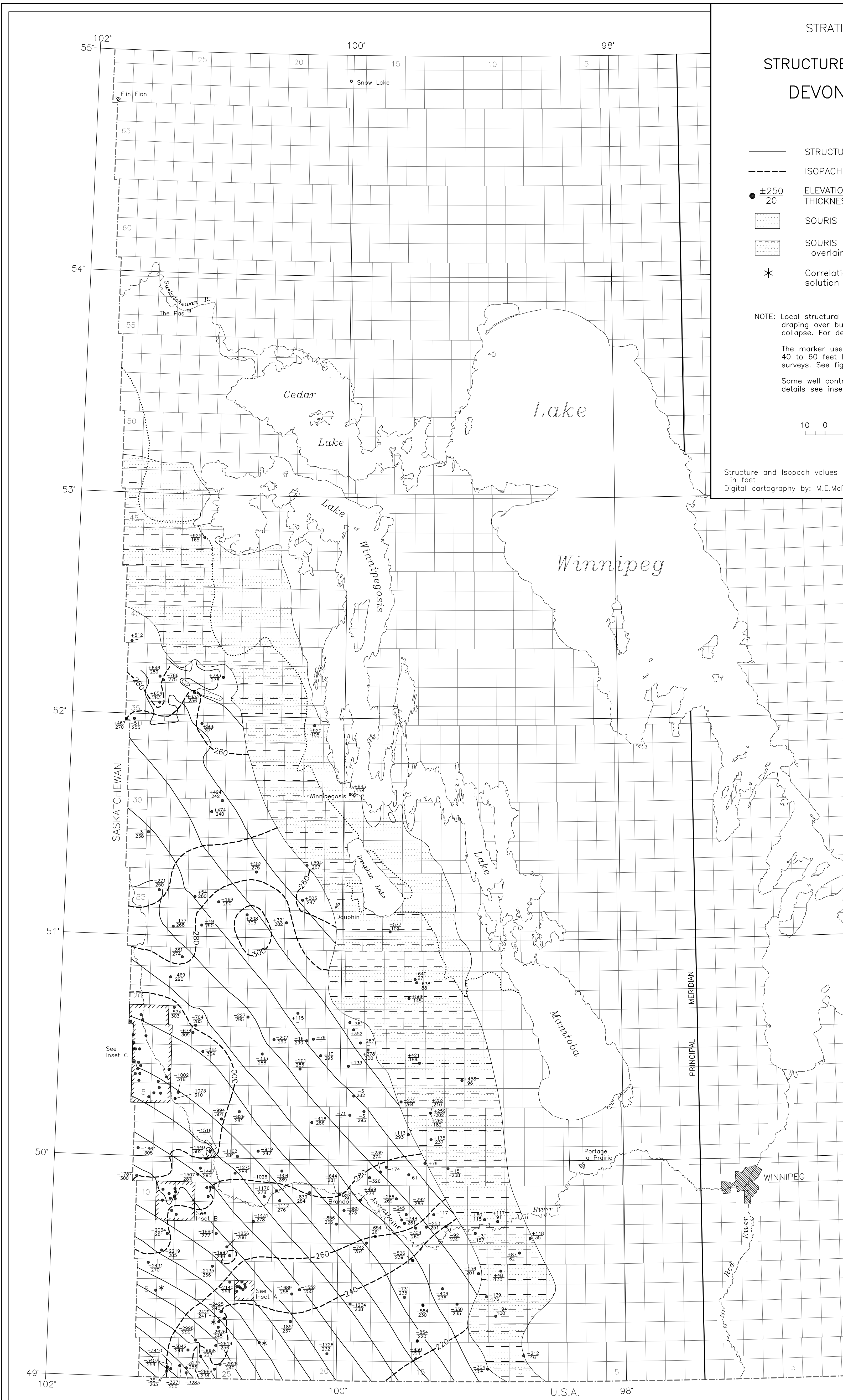
The marker used to define the top of the Souris River Formation occurs 40 to 60 feet below that used by the Saskatchewan and North Dakota surveys. See figure in "Table of Lower Paleozoic Formation Tops."

Some well control omitted, vic., Tp.16-19, Rge.29 (potash area). For details see inset map C.



Structure and isopach values are given in feet
Digital cartography by: M.E.McFarlane

Revised: Jan.1980/H.R.McCabe
Dec.1991/C.D.Martiniuk
Reissued: R.K.Bezys/1998



HARTNEY AREA
Contours not indicated in Tp.5, Rge.24.
Structurally complex area; probable crater structure.
(f)-some faulting noted, or significant isopach anomaly.
(fff)- highly faulted; no correlation possible.

C
B
A