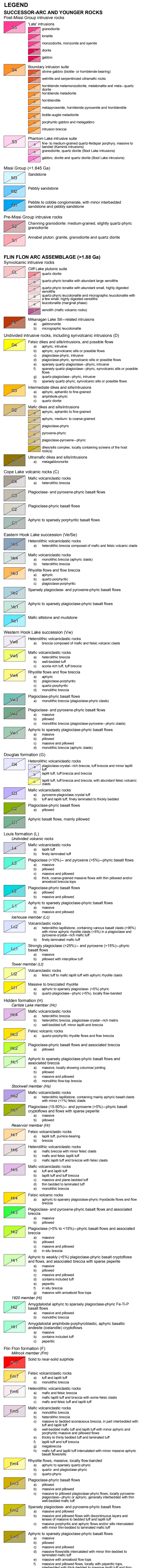
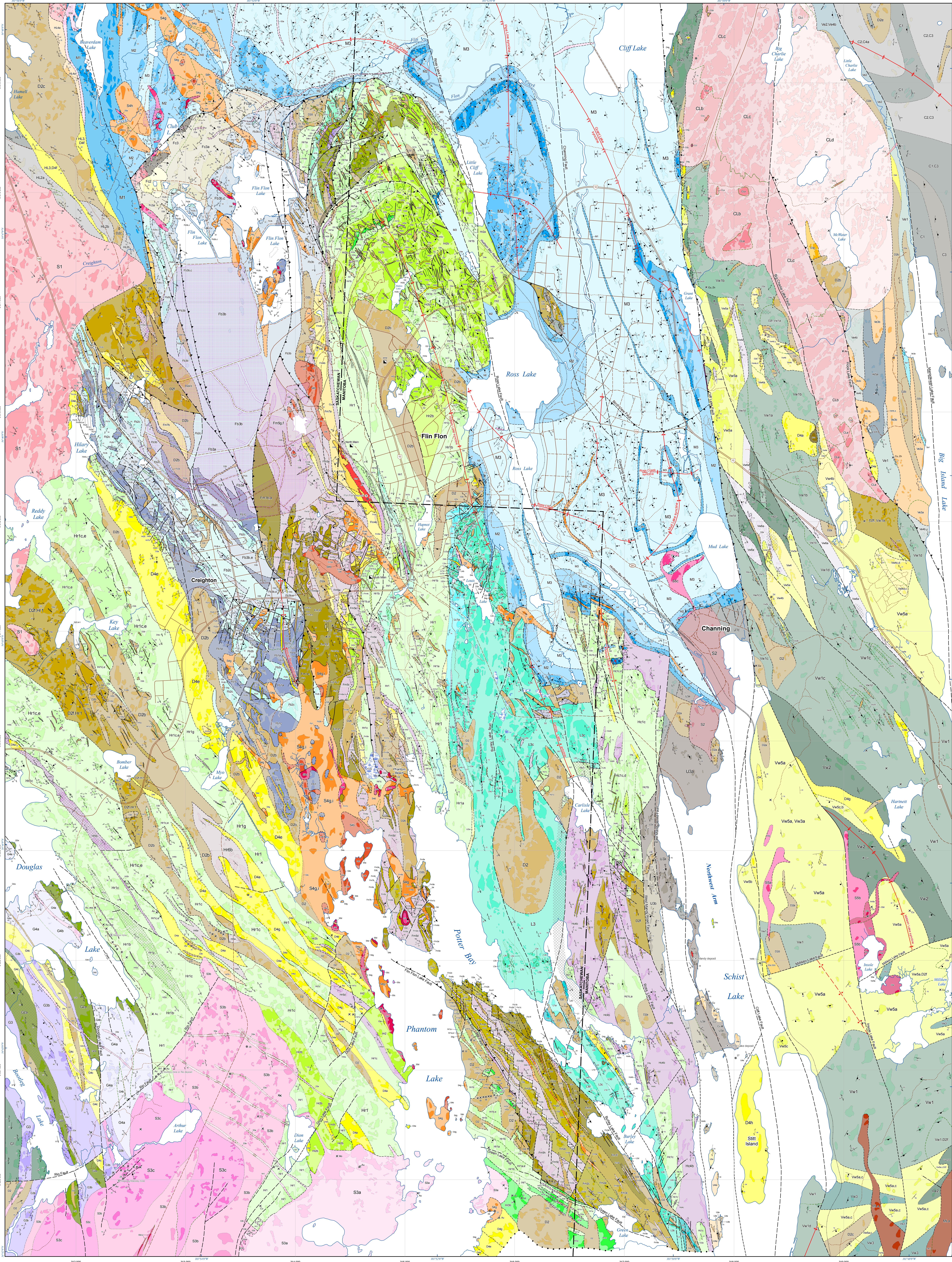


Geology of the Flin Flon area, Manitoba and Saskatchewan (part of NTS 63K12, 13)



Provisional Universal Transverse Mercator. Zone 14, NAD 83. The magnetic declination in 2010 at the centre of the map is 73.32 East, decreasing by 141 annual.

Mapping Index: A small-scale map showing the location of the Flin Flon area within the larger context of Manitoba and Saskatchewan. Includes a legend for mapping symbols.

References: A list of scientific publications and reports that provide the geological data and interpretations used in the map.

Geological symbols: A collection of symbols used on the map to represent different geological features such as faults, folds, and structures.

Geological contacts: A list of symbols and descriptions for various types of geological contacts between rock units.

Geological symbols: A list of symbols for linear structures, including faults and folds, with their respective orientations and characteristics.

Geological mapping by: A table listing the names of geologists and the years they contributed to the mapping of the area.

Geological contacts: A table listing the names of geological contacts and the geologists who identified them.

Geological symbols: A table listing the names of geological symbols and the geologists who defined them.

Geological symbols: A table listing the names of geological symbols and the geologists who defined them.

Geological symbols: A table listing the names of geological symbols and the geologists who defined them.

Geological symbols: A table listing the names of geological symbols and the geologists who defined them.