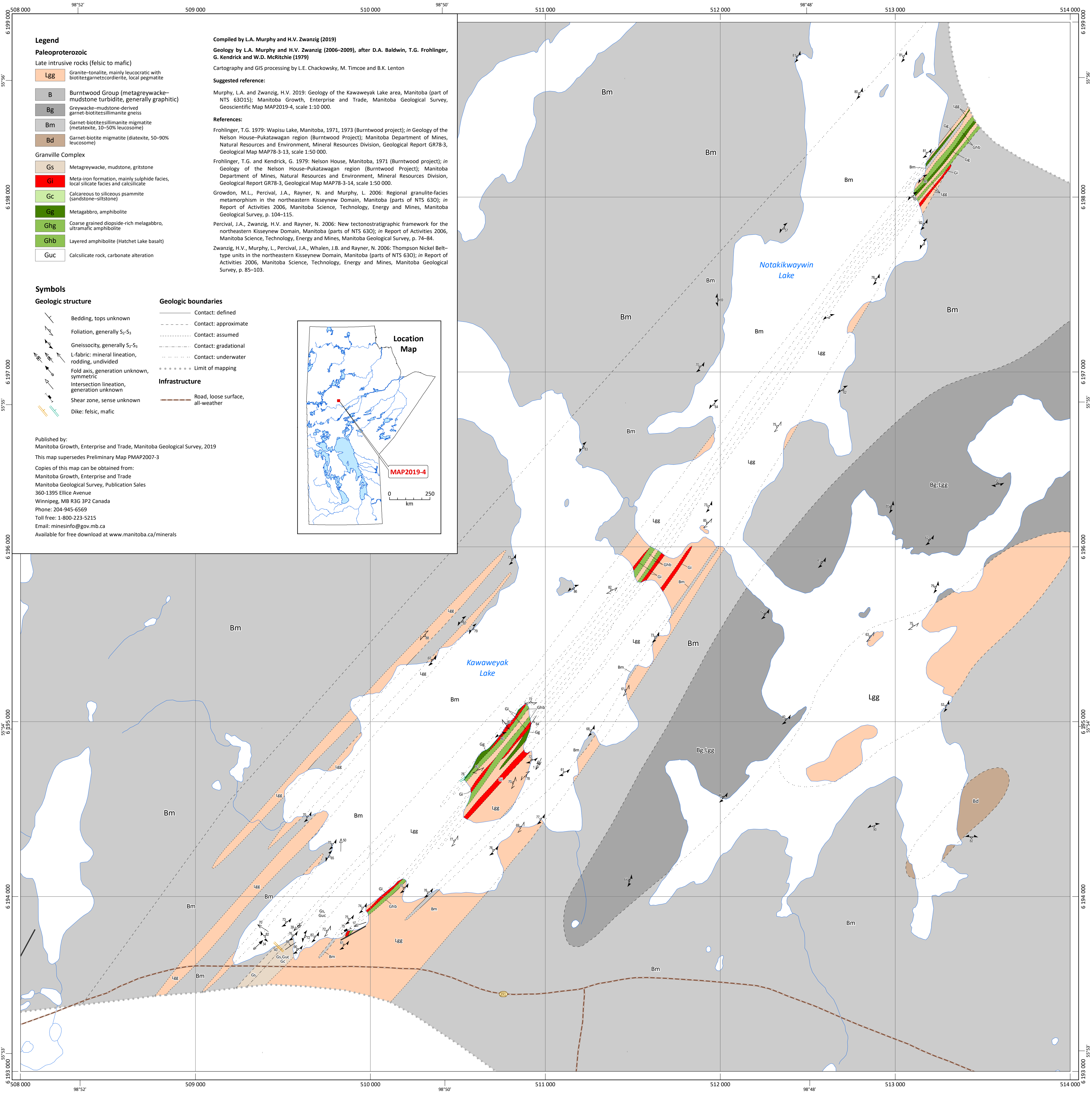




Geology of the Kawawayak Lake area, Manitoba (part of NTS 63015)



Legend

Paleoproterozoic

- Late intrusive rocks (felsic to mafic)
- Lgg Granite-tonalite, mainly leucocratic with biotite/garnets/cordierite, local pegmatite
 - B Burntwood Group (metagreywacke-mudstone turbidite, generally graphitic)
 - Bg Greywacke-mudstone-derived garnet-biotite/sillimanite gneiss
 - Bm Garnet-biotite/sillimanite migmatite (metatextite, 10-50% leucosome)
 - Bd Garnet-biotite migmatite (diatextite, 50-90% leucosome)

- Granville Complex
- Gs Metagreywacke, mudstone, gritstone
 - Gi Meta-iron formation, mainly sulphide facies, local silicate facies and calcisilicate
 - Gc Calcareous to siliceous psammite (sandstone-siltstone)
 - Gg Metagabbro, amphibolite
 - Ghg Coarse grained diopside-rich melagabbro, ultramafic amphibolite
 - Ghb Layered amphibolite (Hatchet Lake basalt)
 - Guc Calcisilicate rock, carbonate alteration

Symbols

Geologic structure

- Bedding, tops unknown
- Foliation, generally S₁-S₃
- Gneissosity, generally S₂-S₃
- L-fabric: mineral lineation, rodding, undivided
- Fold axis, generation unknown, symmetric
- Intersection lineation, generation unknown
- Shear zone, sense unknown
- Dike: felsic, mafic

Geologic boundaries

- Contact: defined
- Contact: approximate
- Contact: assumed
- Contact: gradational
- Contact: underwater
- Limit of mapping

Infrastructure

- Road, loose surface, all-weather

Compiled by L.A. Murphy and H.V. Zwanzig (2019)

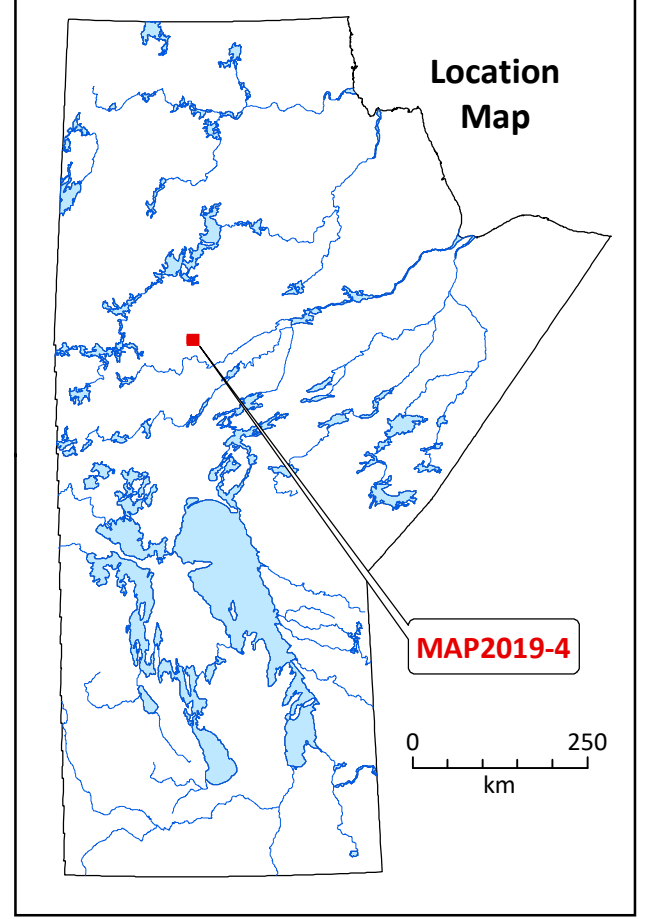
Geology by L.A. Murphy and H.V. Zwanzig (2006-2009), after D.A. Baldwin, T.G. Frohlinger, G. Kendrick and W.D. McRitchie (1979)
Cartography and GIS processing by L.E. Chackowsky, M. Timcoe and B.K. Lenton

Suggested reference:

Murphy, L.A. and Zwanzig, H.V. 2019: Geology of the Kawawayak Lake area, Manitoba (part of NTS 63015); Manitoba Growth, Enterprise and Trade, Manitoba Geological Survey, Geoscientific Map MAP2019-4, scale 1:10 000.

References:

- Frohlinger, T.G. 1979: Wapisi Lake, Manitoba, 1971 (Burntwood project); in Geology of the Nelson House-Pukatawagan region (Burntwood Project); Manitoba Department of Mines, Natural Resources and Environment, Mineral Resources Division, Geological Report GR78-3, Geological Map MAP78-3-13, scale 1:50 000.
- Frohlinger, T.G. and Kendrick, G. 1979: Nelson House, Manitoba, 1971 (Burntwood project); in Geology of the Nelson House-Pukatawagan region (Burntwood Project); Manitoba Department of Mines, Natural Resources and Environment, Mineral Resources Division, Geological Report GR78-3, Geological Map MAP78-3-14, scale 1:50 000.
- Growdon, M.L., Percival, J.A., Rayner, N. and Murphy, L. 2006: Regional granulite-facies metamorphism in the northeastern Kiseeynew Domain, Manitoba (parts of NTS 630); in Report of Activities 2006, Manitoba Science, Technology, Energy and Mines, Manitoba Geological Survey, p. 104-115.
- Percival, J.A., Zwanzig, H.V. and Rayner, N. 2006: New tectonostratigraphic framework for the northeastern Kiseeynew Domain, Manitoba (parts of NTS 630); in Report of Activities 2006, Manitoba Science, Technology, Energy and Mines, Manitoba Geological Survey, p. 74-84.
- Zwanzig, H.V., Murphy, L., Percival, J.A., Whalen, J.B. and Rayner, N. 2006: Thompson Nickel Belt-type units in the northeastern Kiseeynew Domain, Manitoba (parts of NTS 630); in Report of Activities 2006, Manitoba Science, Technology, Energy and Mines, Manitoba Geological Survey, p. 85-103.



Published by:
Manitoba Growth, Enterprise and Trade, Manitoba Geological Survey, 2019
This map supersedes Preliminary Map PMAP2007-3
Copies of this map can be obtained from:
Manitoba Growth, Enterprise and Trade
Manitoba Geological Survey, Publication Sales
360-1395 Ellice Avenue
Winnipeg, MB R3G 3P2 Canada
Phone: 204-945-6569
Toll free: 1-800-223-5215
Email: minesinfo@gov.mb.ca
Available for free download at www.manitoba.ca/minerals

