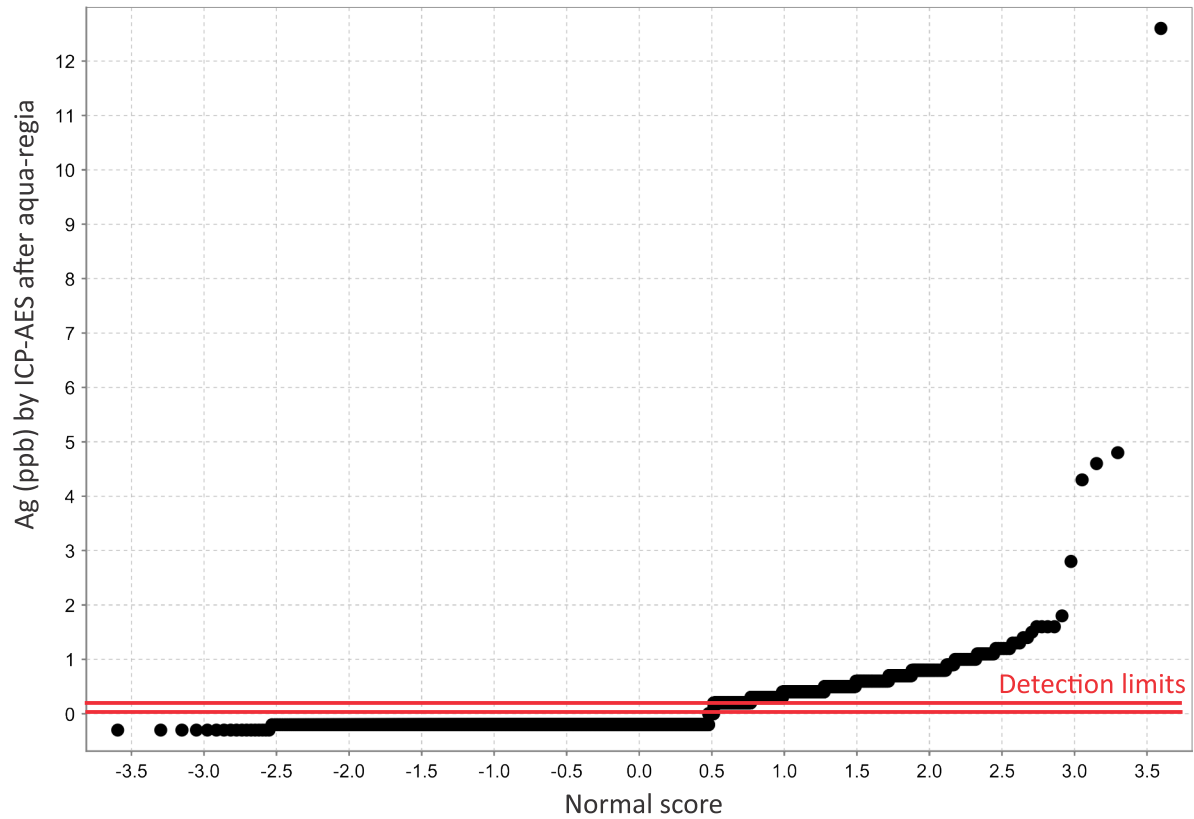
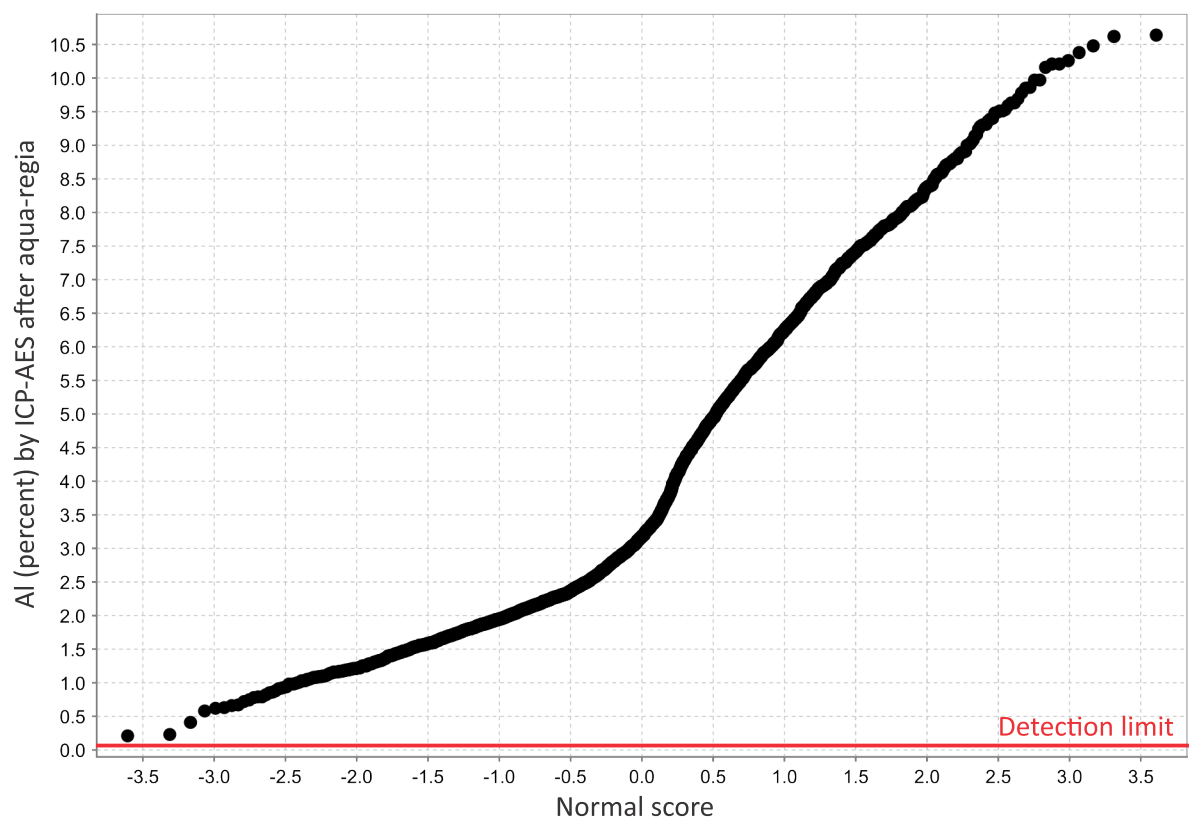


Appendix 3: Manitoba Geological Survey till-matrix compilation 3: ICP-AES after aqua-regia on the clay size-fraction ($<2\ \mu\text{m}$) of till matrices - March 2020

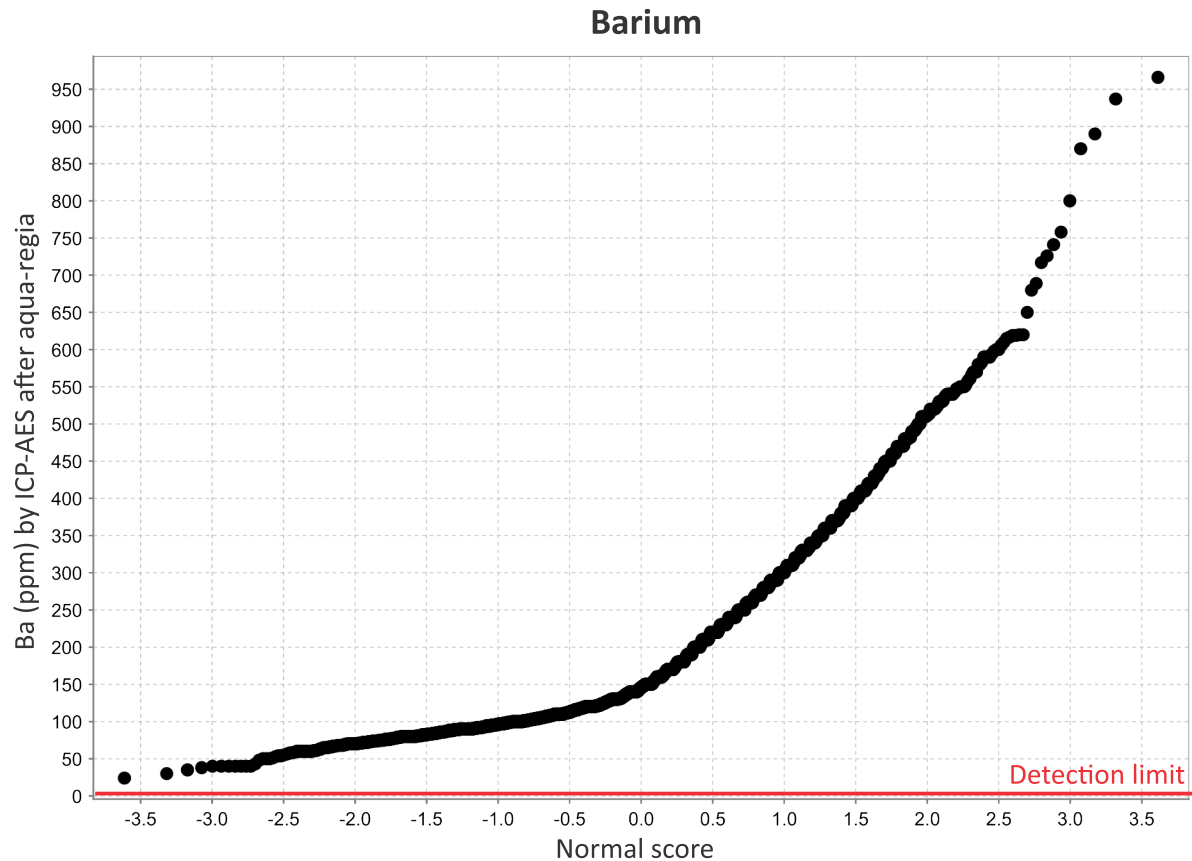
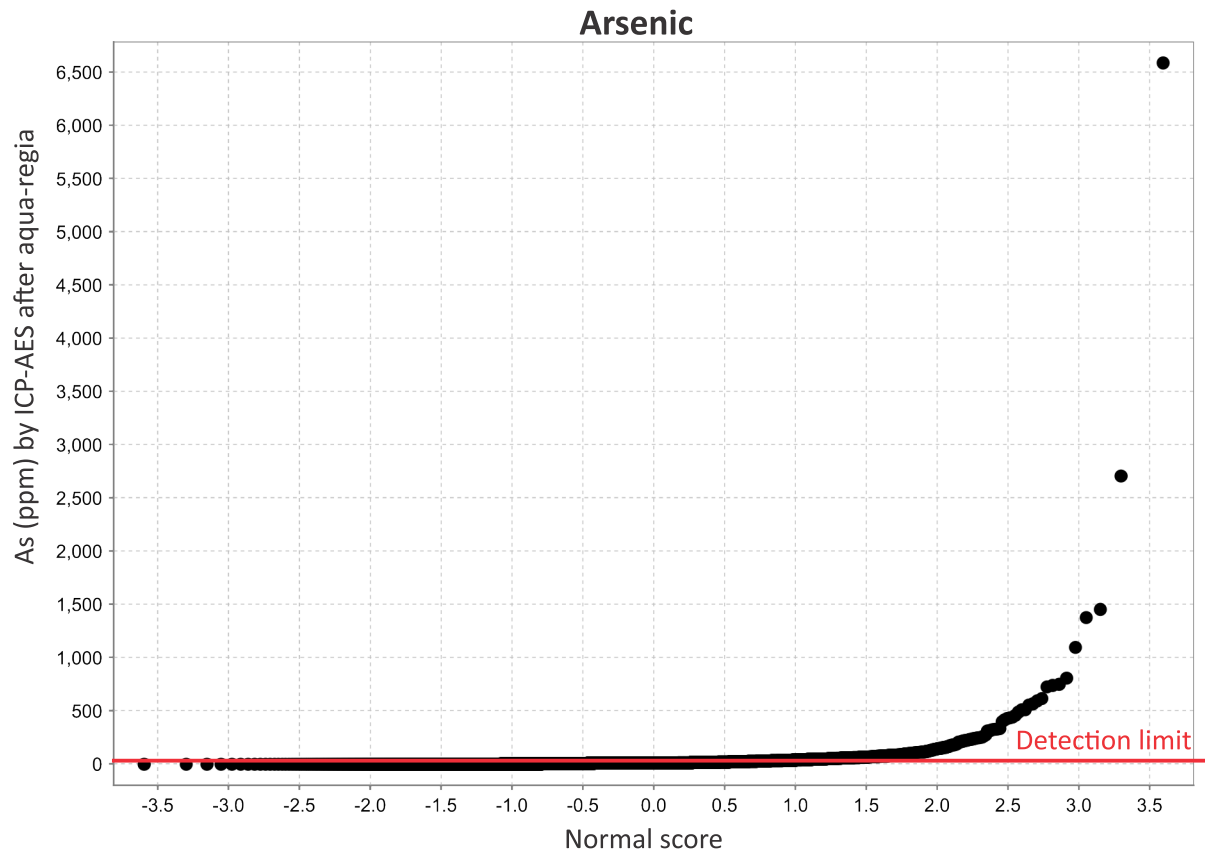
Silver



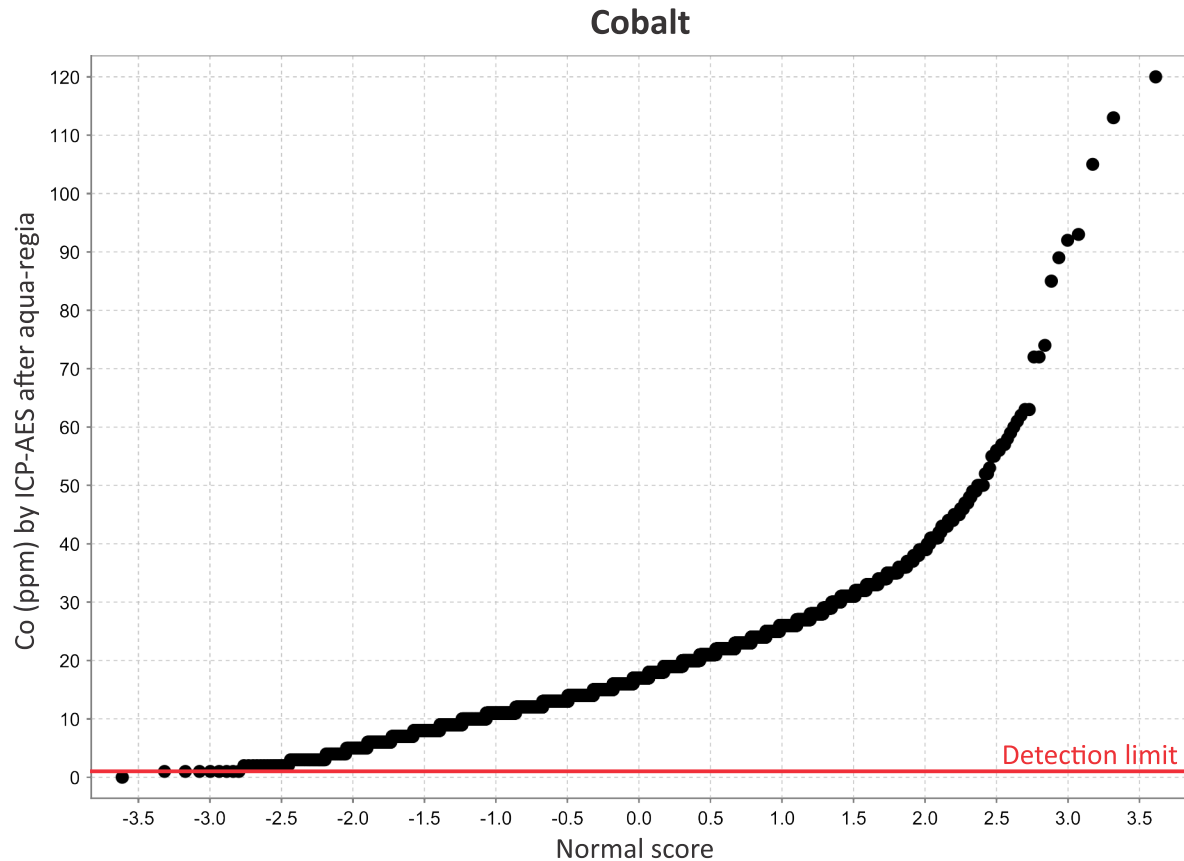
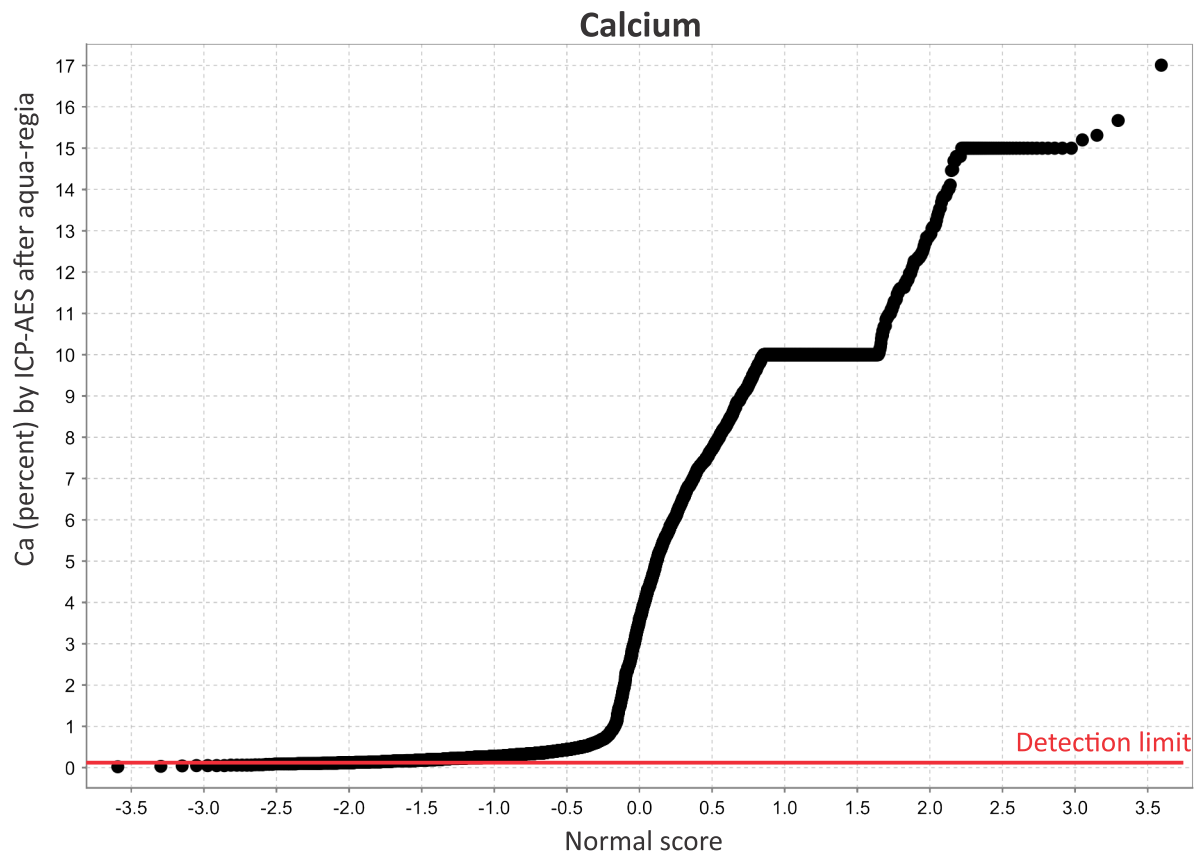
Aluminum



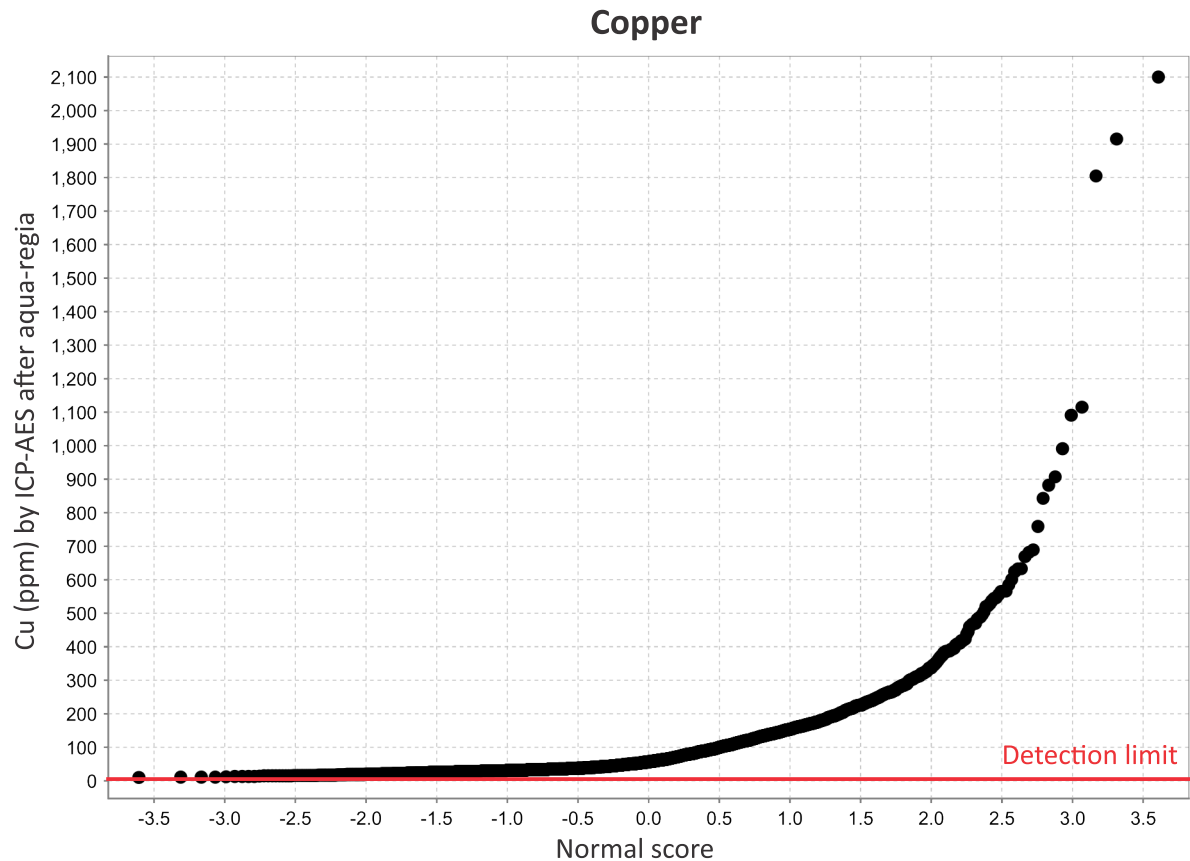
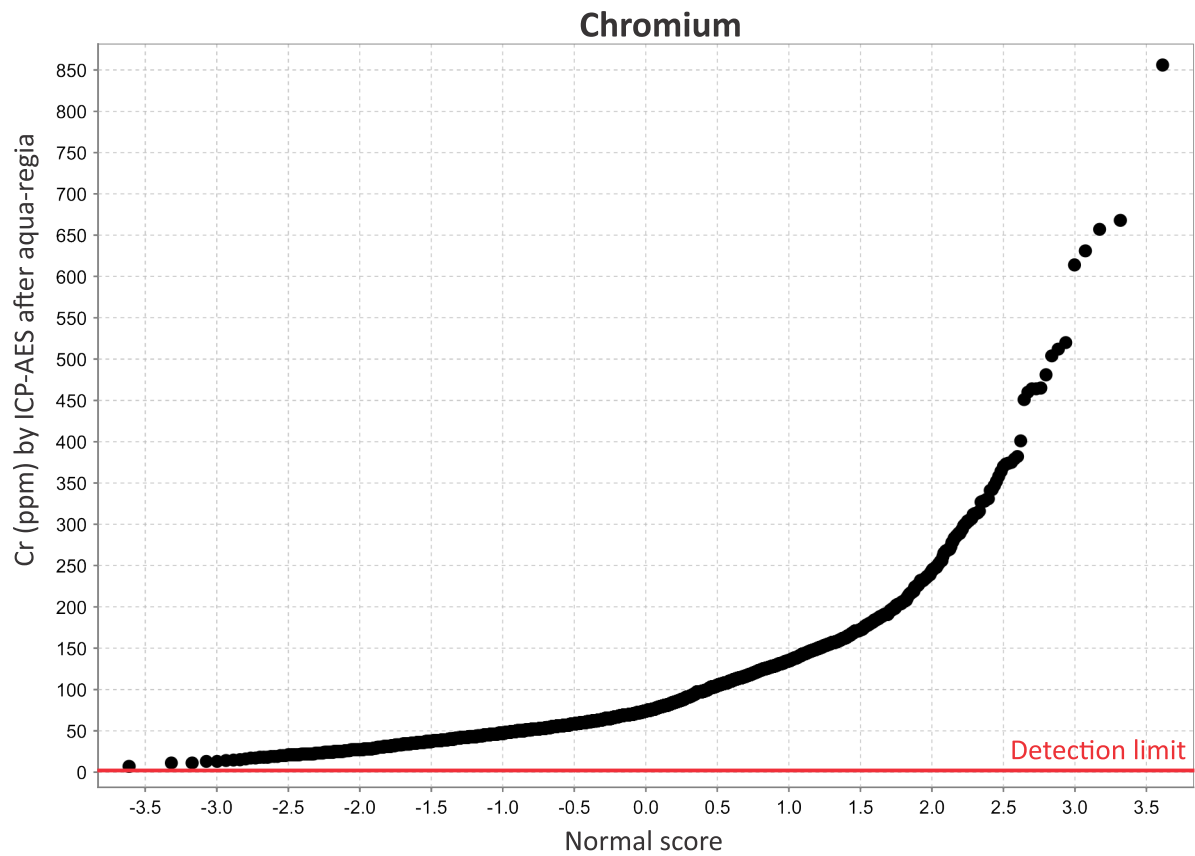
Appendix 3: Manitoba Geological Survey till-matrix compilation 3: ICP-AES after aqua-regia on the clay size-fraction (<2 μm) of till matrices - March 2020



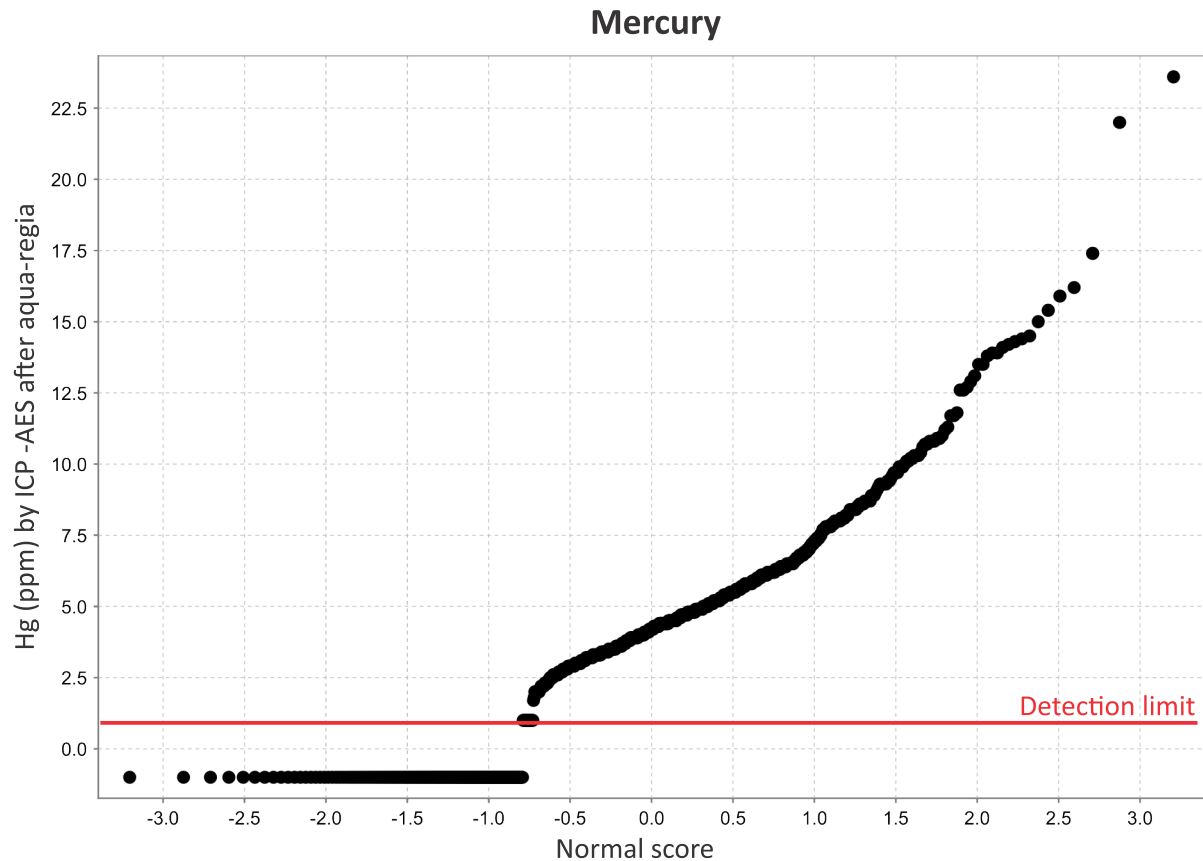
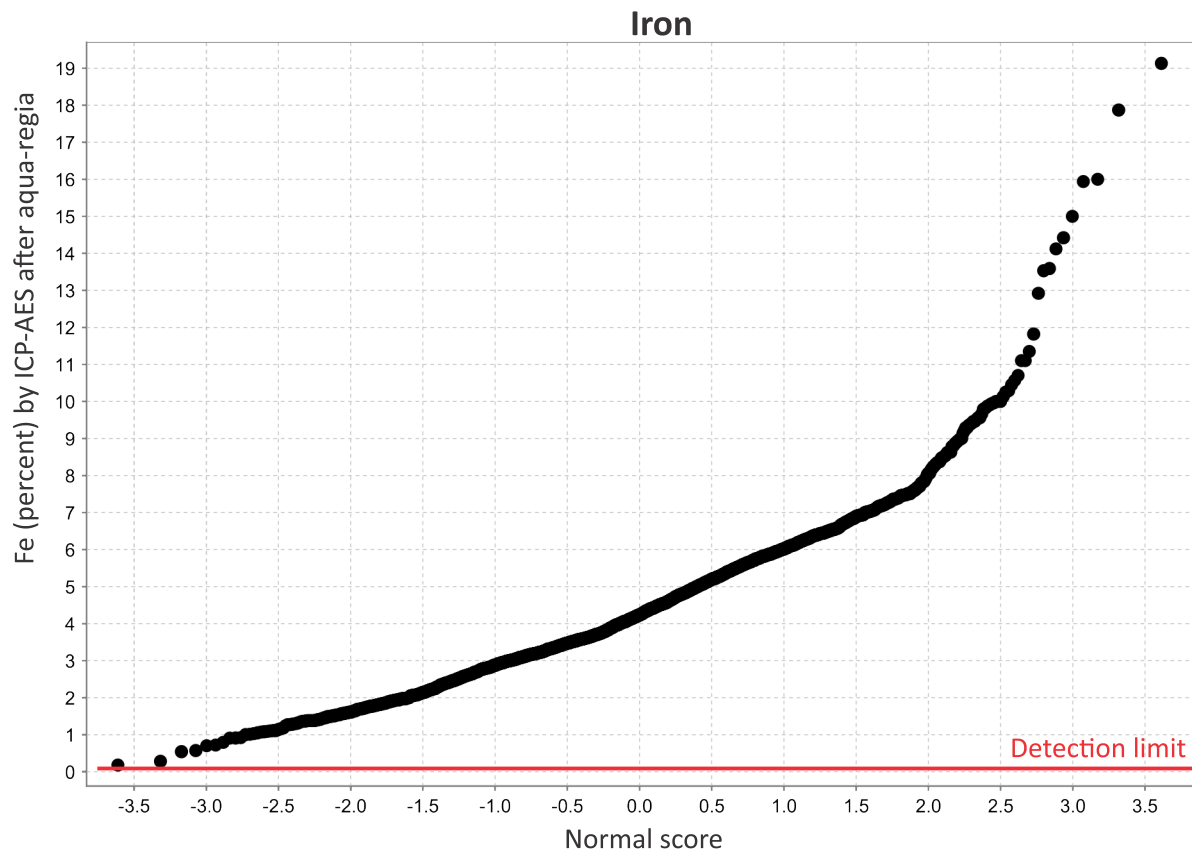
Appendix 3: Manitoba Geological Survey till-matrix compilation 3: ICP-AES after aqua-regia on the clay size-fraction ($<2\ \mu\text{m}$) of till matrices - March 2020



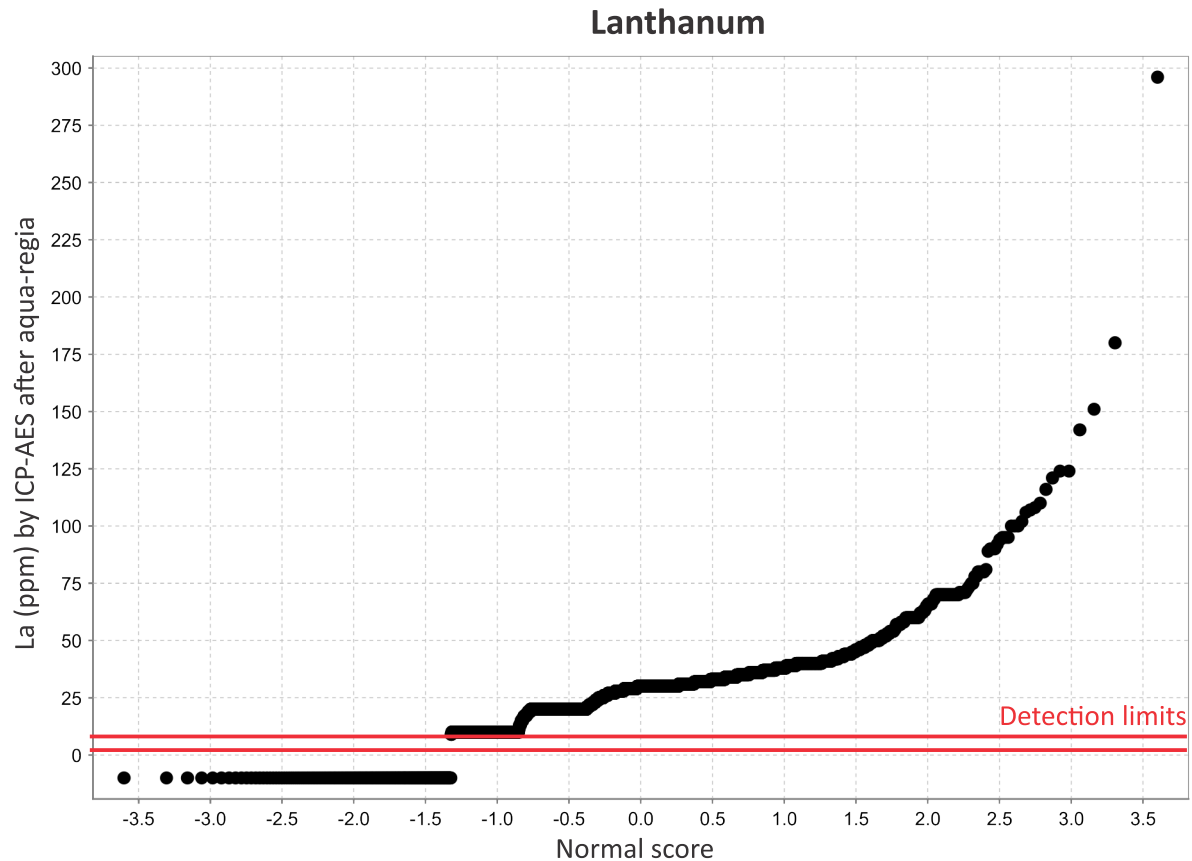
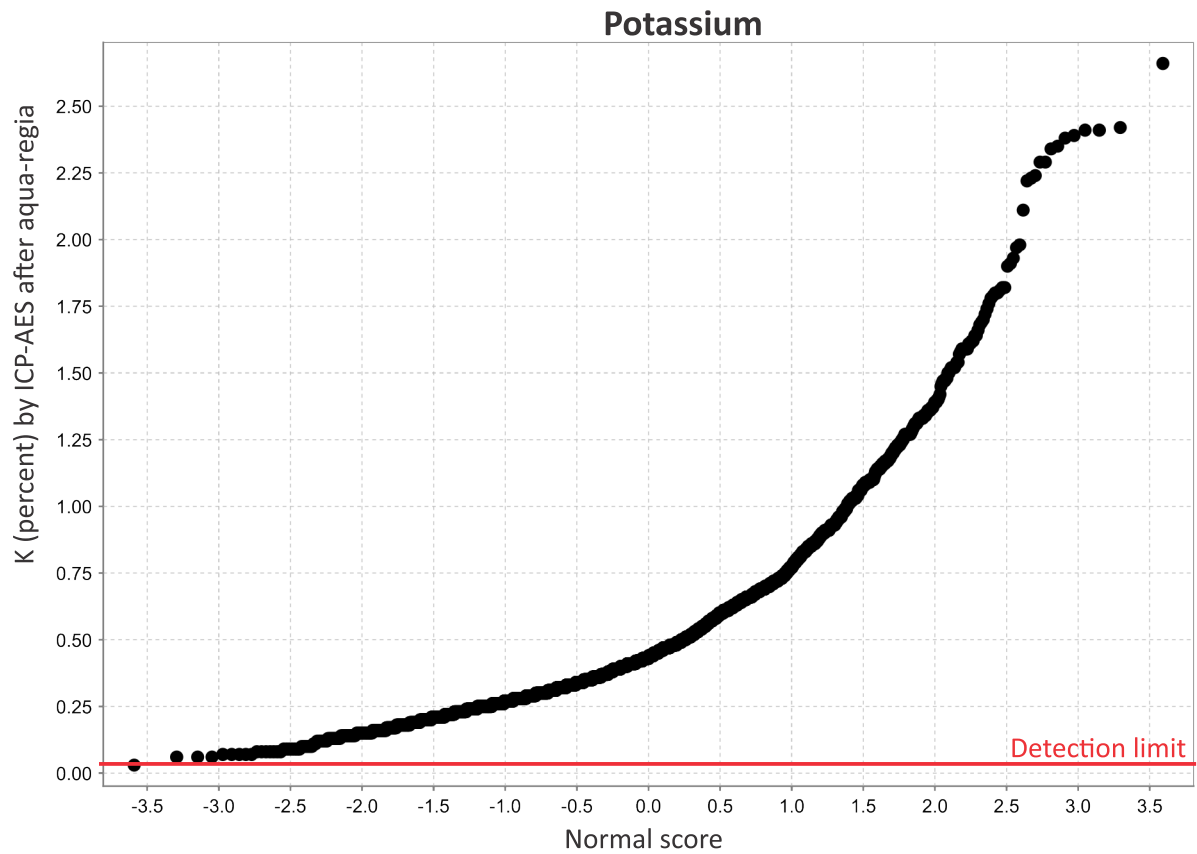
Appendix 3: Manitoba Geological Survey till-matrix compilation 3: ICP-AES after aqua-regia on the clay size-fraction ($<2\ \mu\text{m}$) of till matrices - March 2020



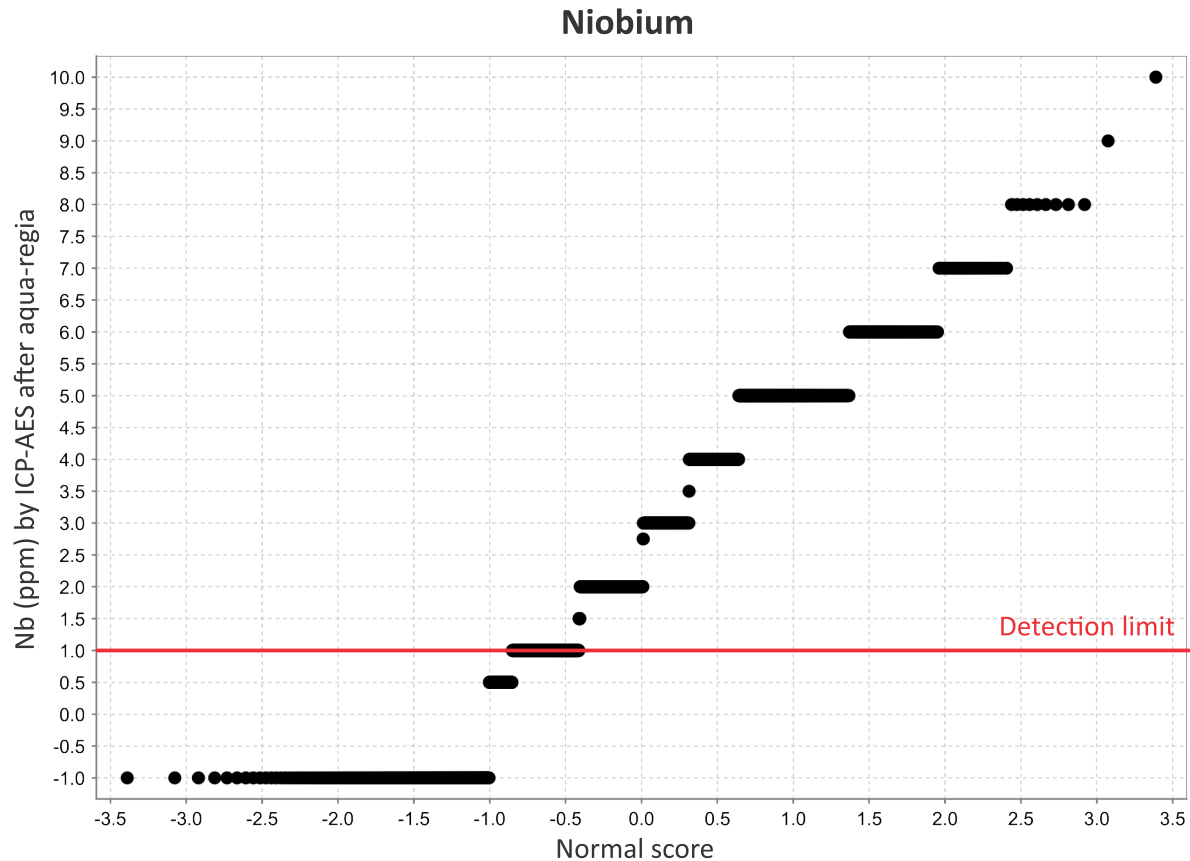
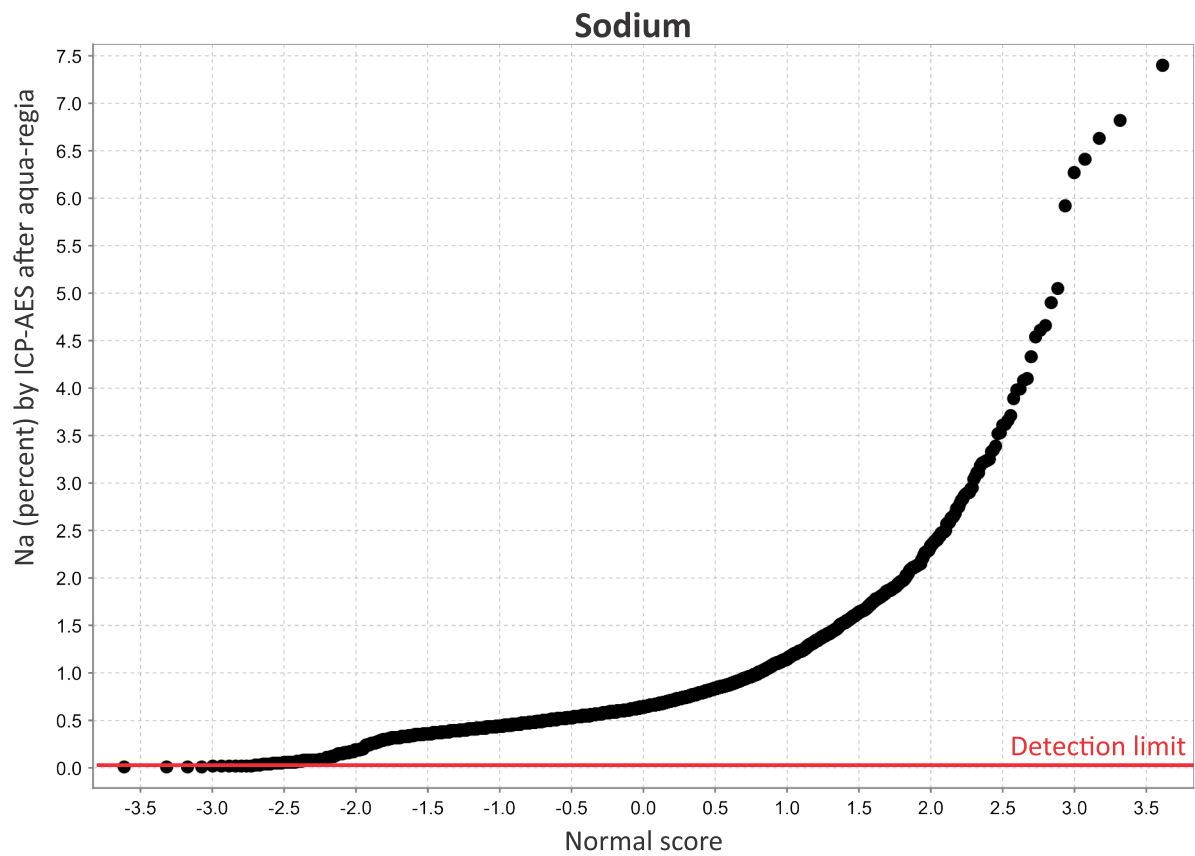
Appendix 3: Manitoba Geological Survey till-matrix compilation 3: ICP-AES after aqua-regia on the clay size-fraction ($<2\ \mu\text{m}$) of till matrices - March 2020



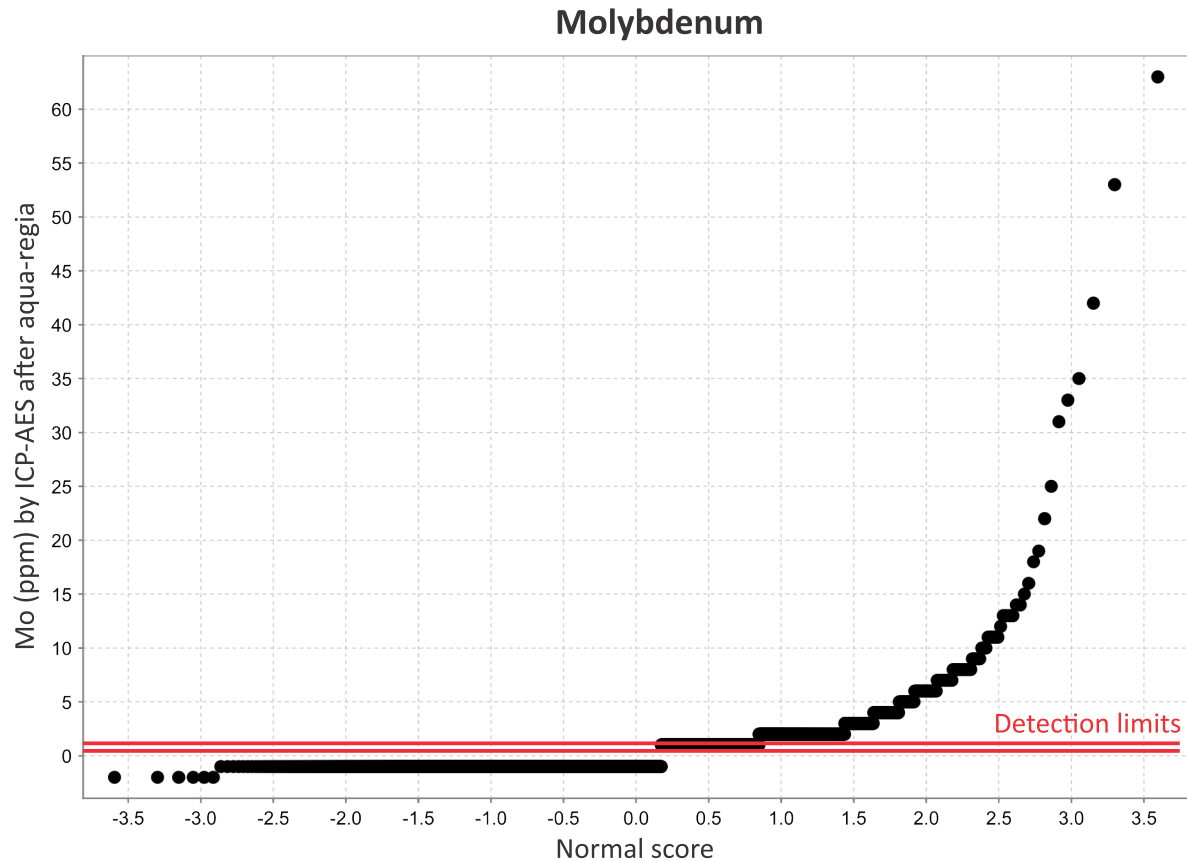
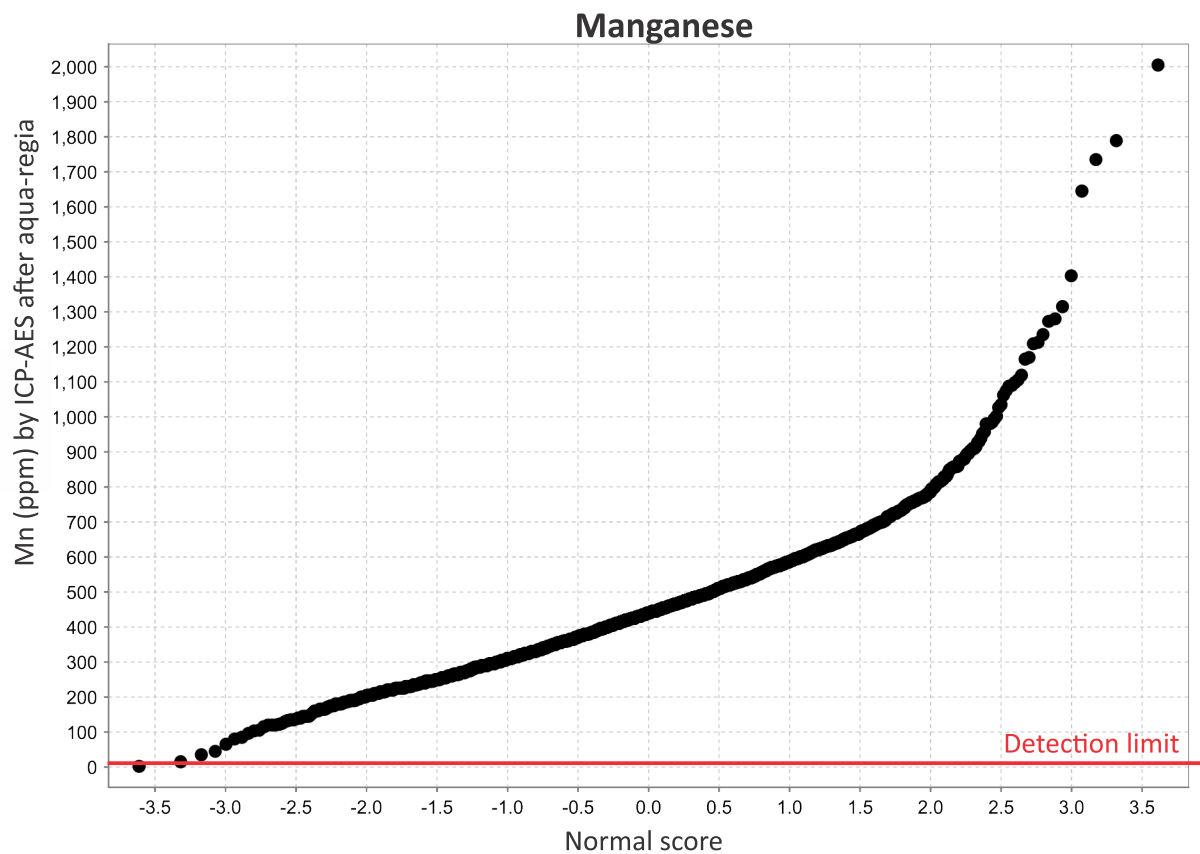
Appendix 3: Manitoba Geological Survey till-matrix compilation 3: ICP-AES after aqua-regia on the clay size-fraction ($<2\ \mu\text{m}$) of till matrices - March 2020



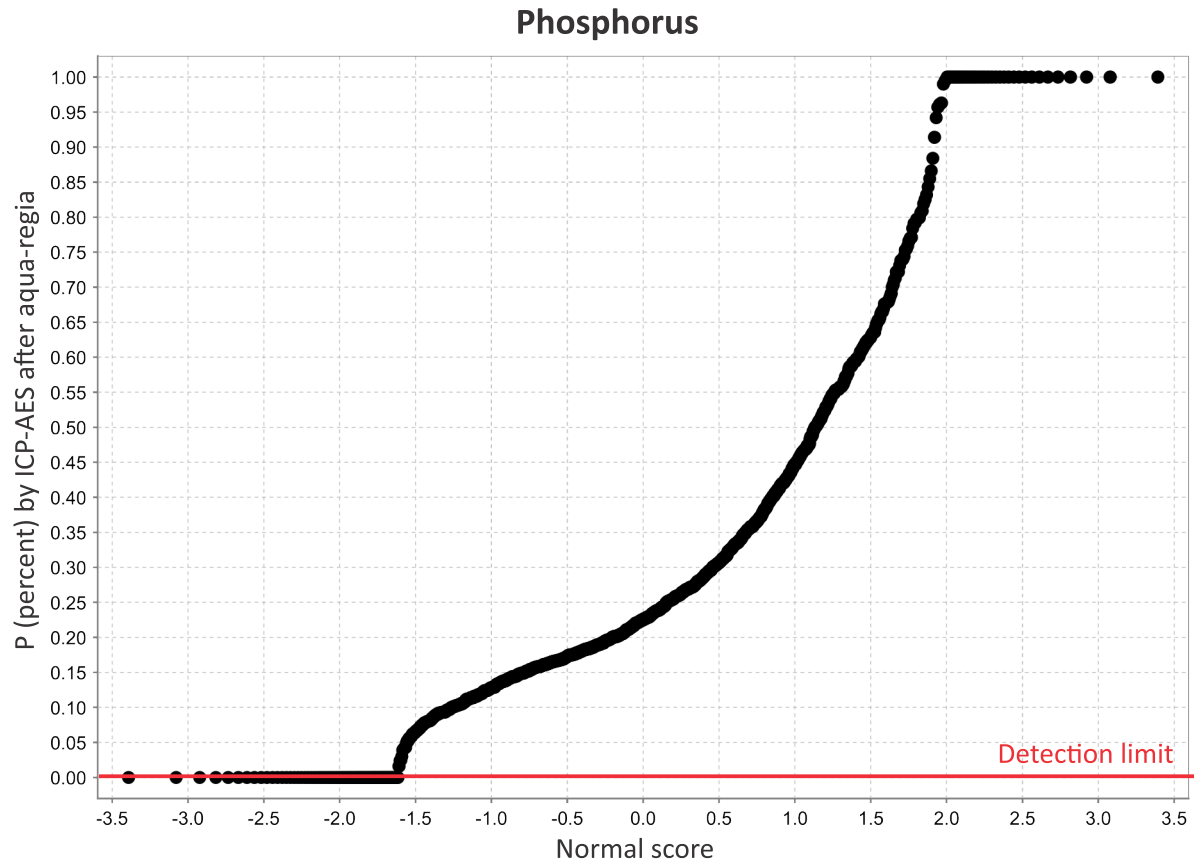
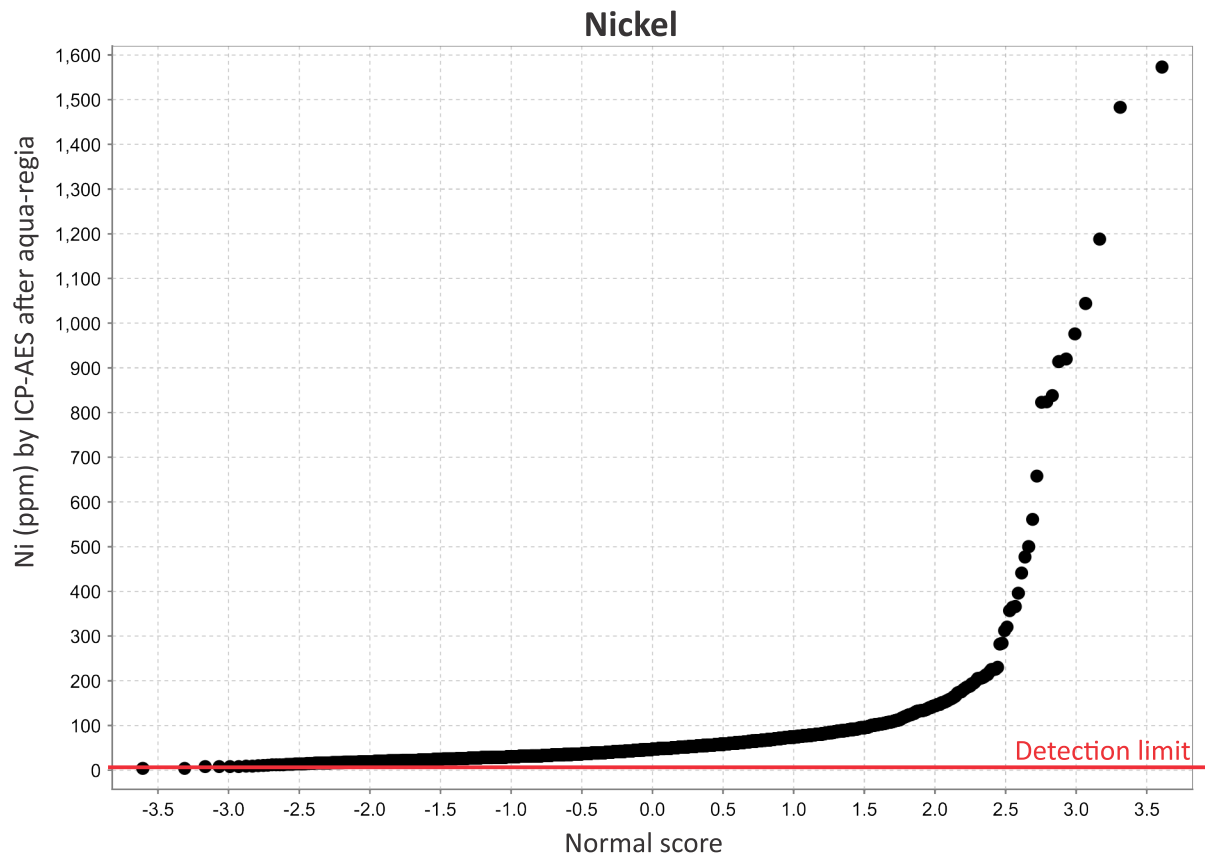
Appendix 3: Manitoba Geological Survey till-matrix compilation 3: ICP-AES after aqua-regia on the clay size-fraction ($<2\ \mu\text{m}$) of till matrices - March 2020



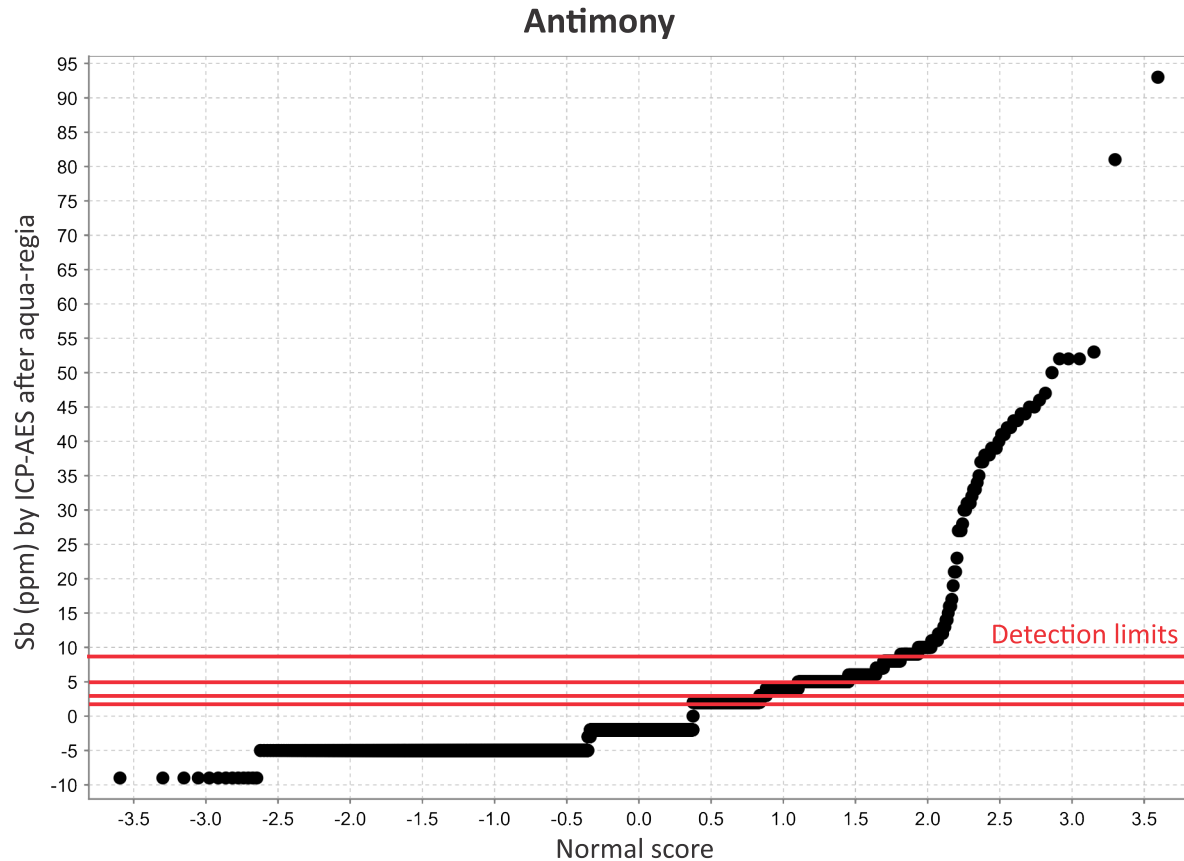
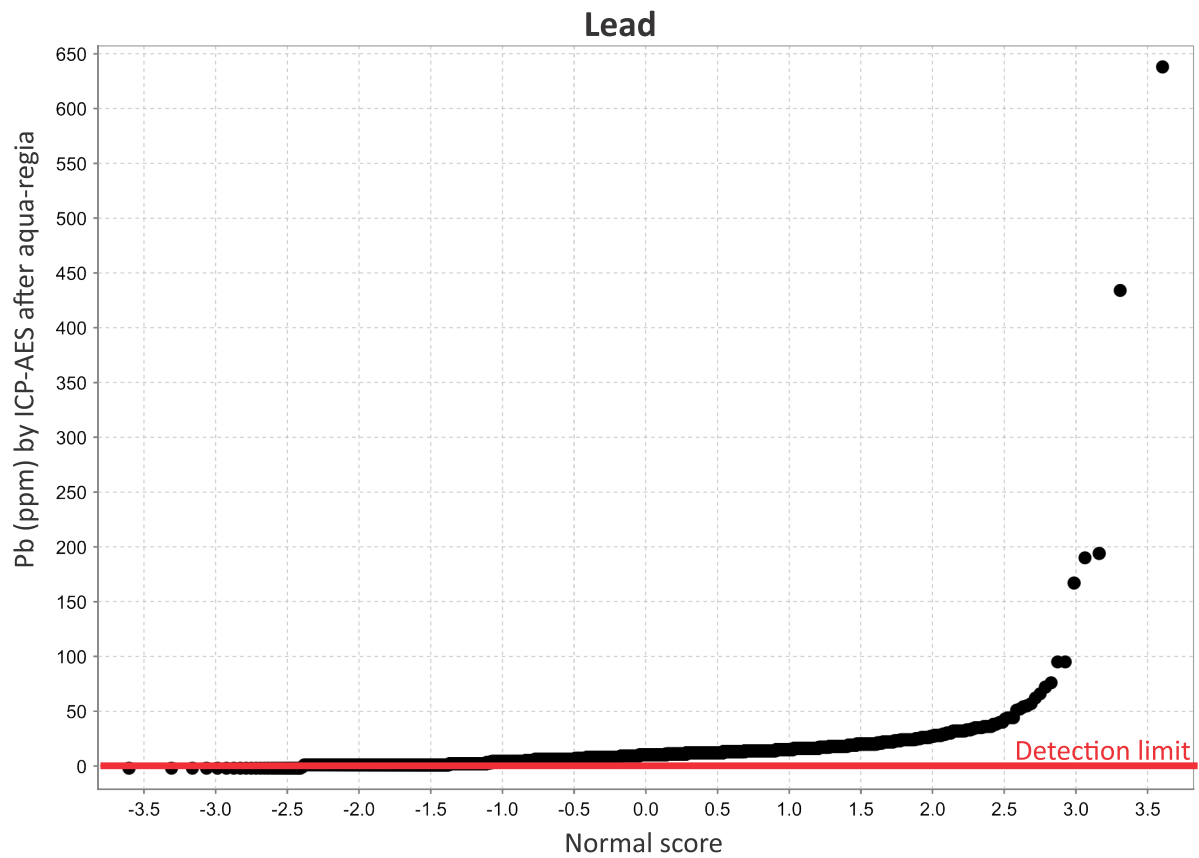
Appendix 3: Manitoba Geological Survey till-matrix compilation 3: ICP-AES after aqua-regia on the clay size-fraction (<2 µm) of till matrices - March 2020



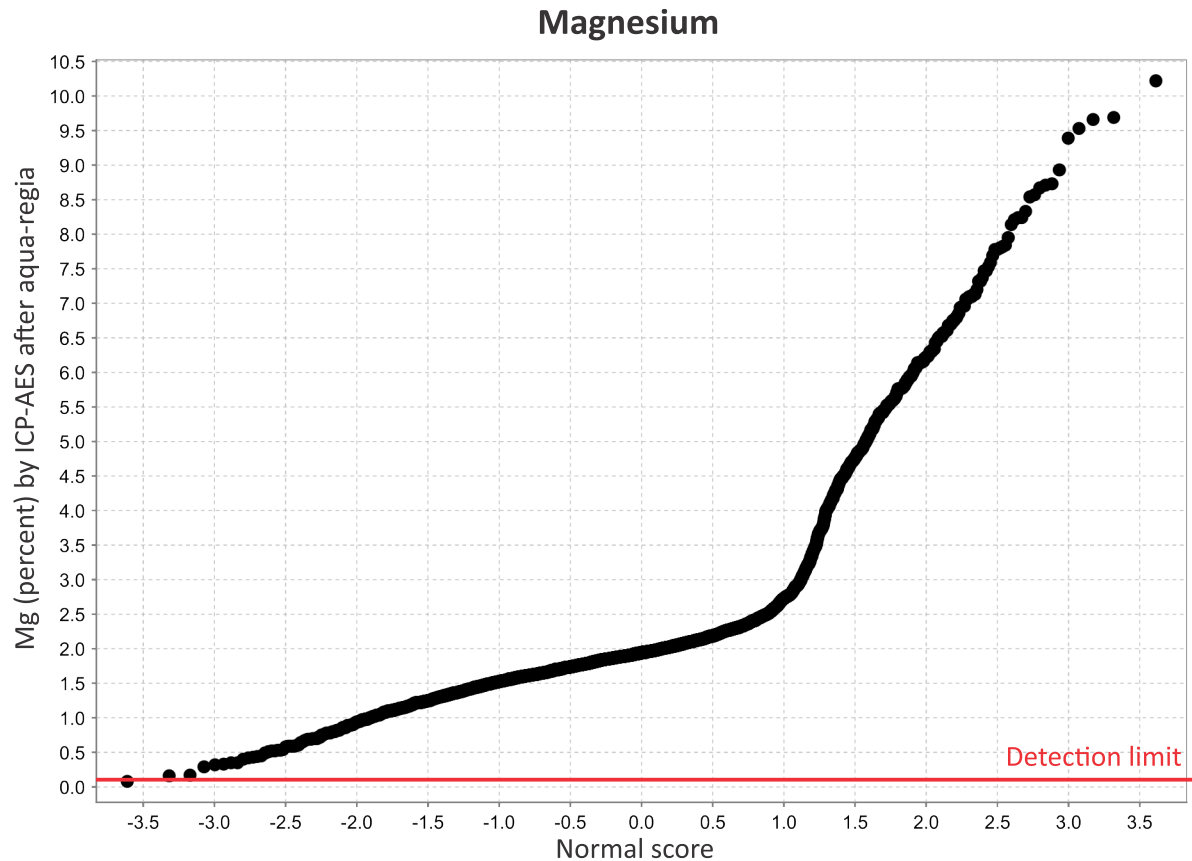
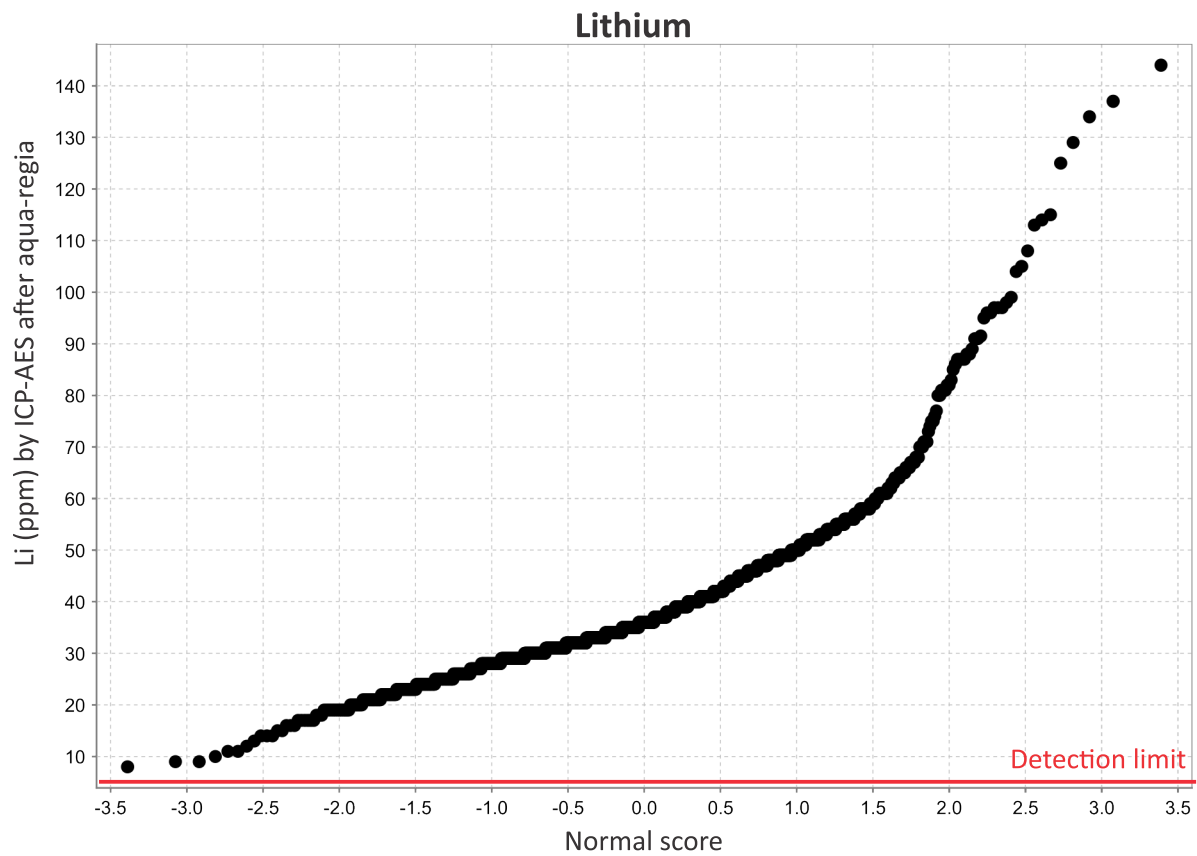
Appendix 3: Manitoba Geological Survey till-matrix compilation 3: ICP-AES after aqua-regia on the clay size-fraction (<2 µm) of till matrices - March 2020



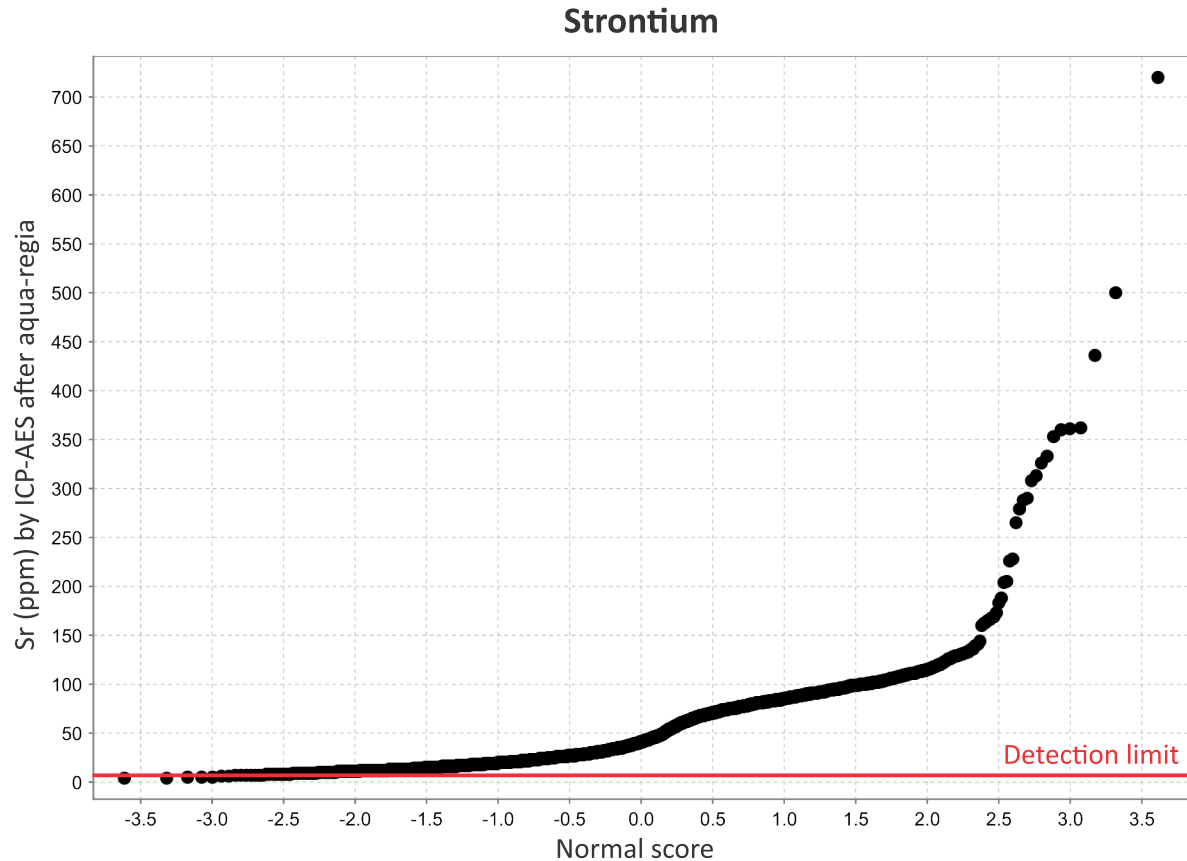
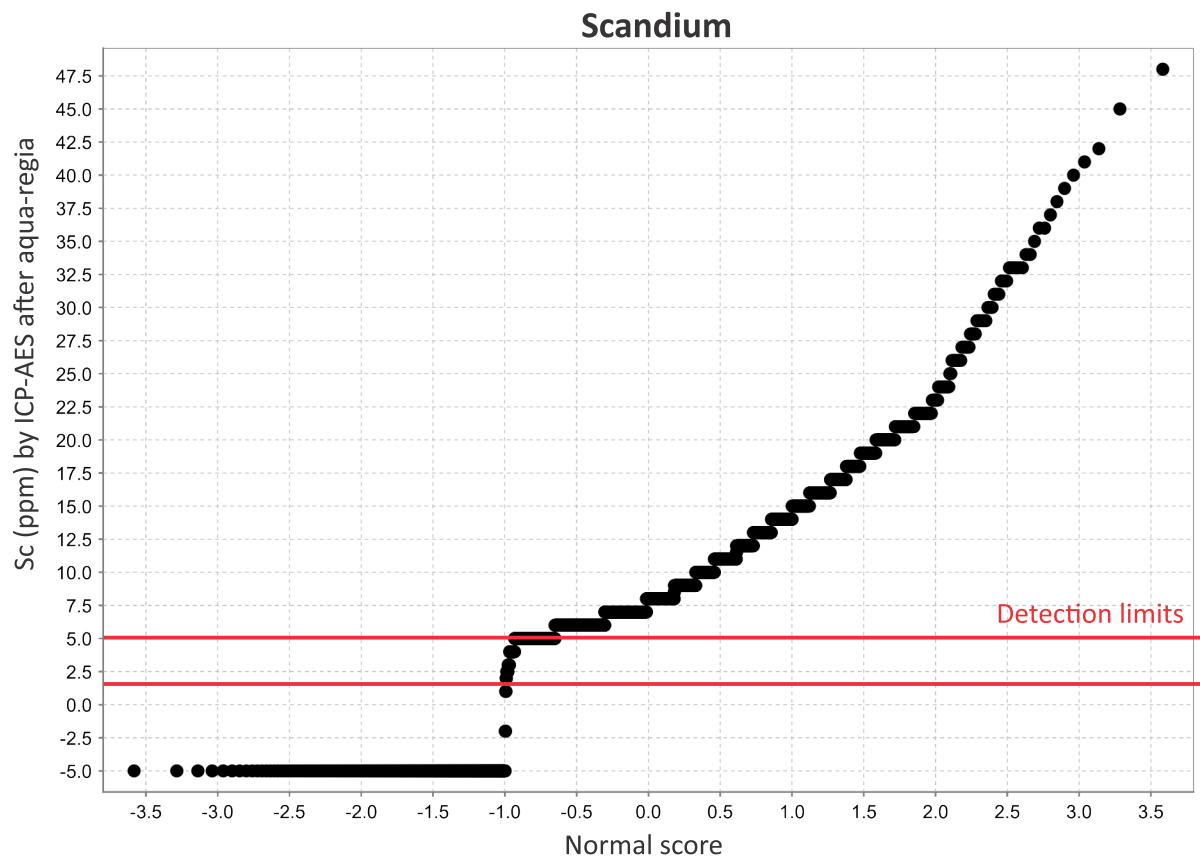
Appendix 3: Manitoba Geological Survey till-matrix compilation 3: ICP-AES after aqua-regia on the clay size-fraction ($<2\ \mu\text{m}$) of till matrices - March 2020



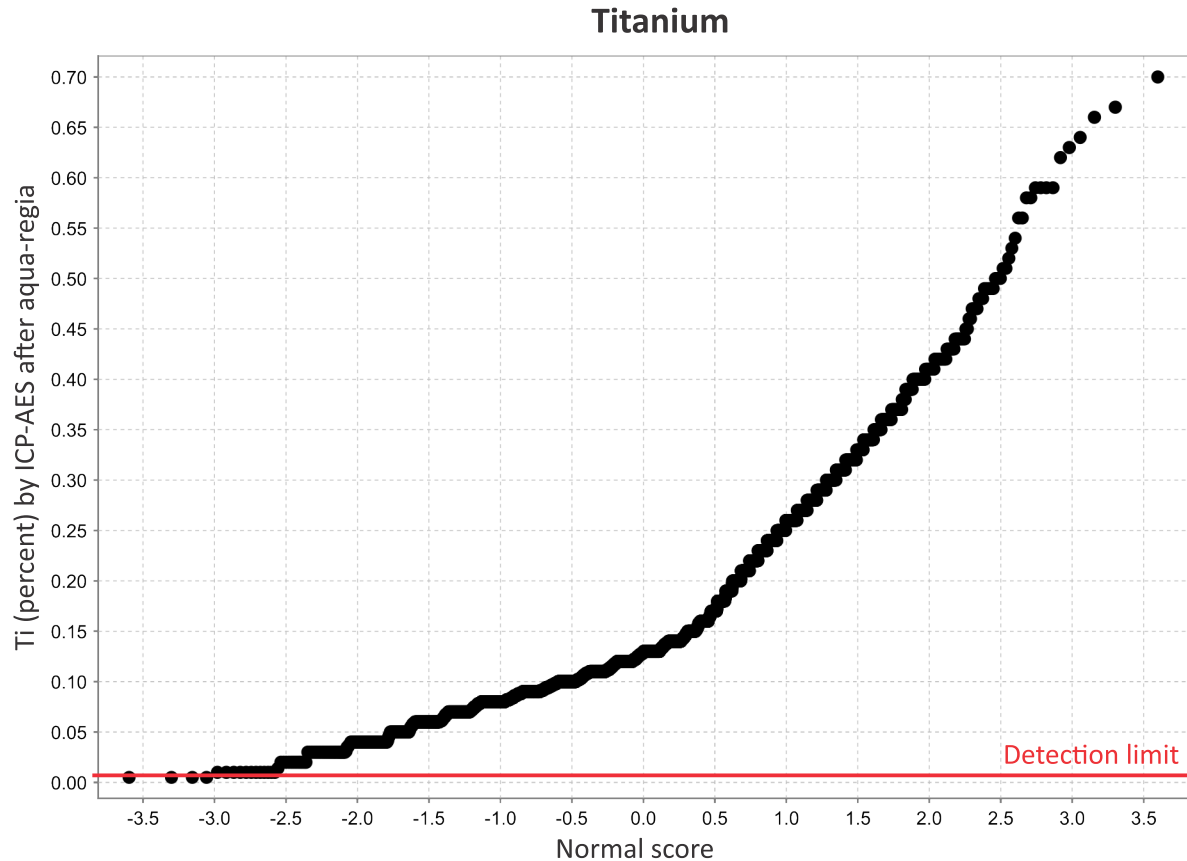
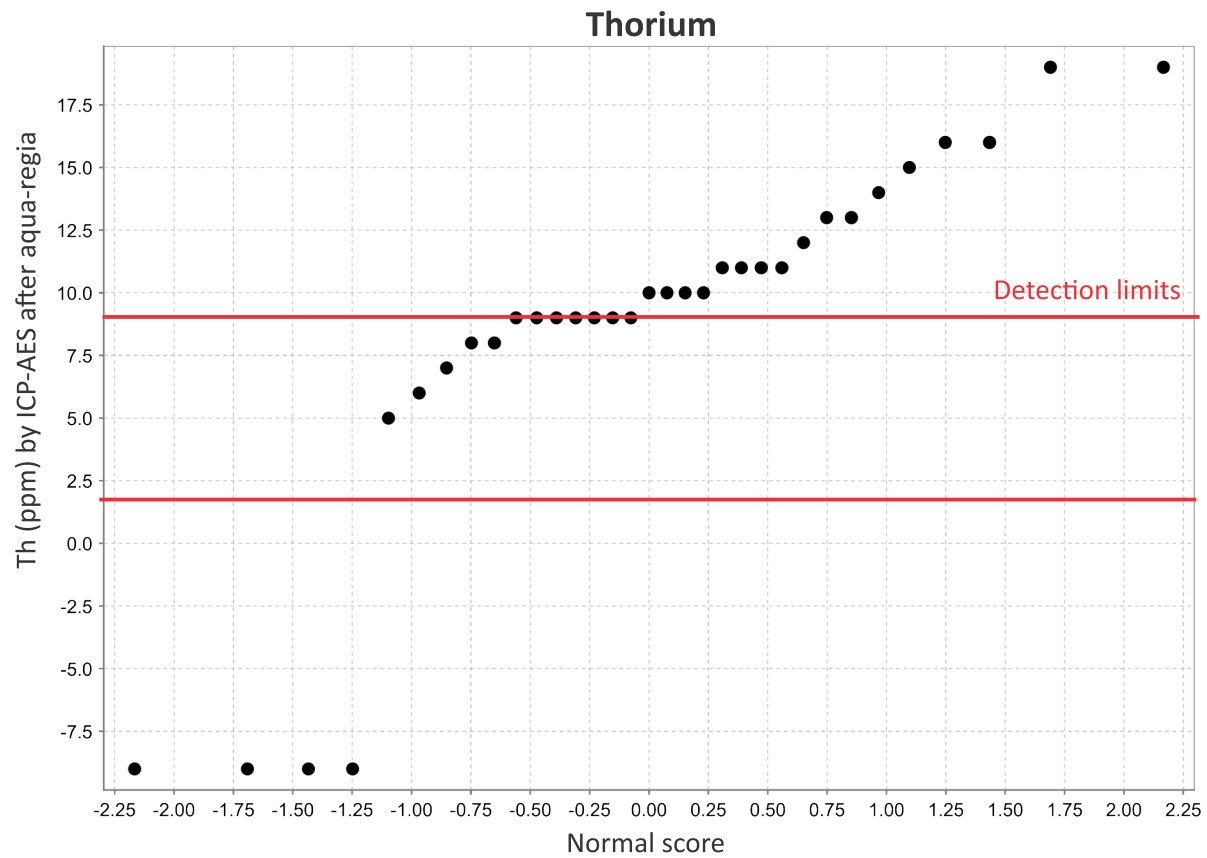
Appendix 3: Manitoba Geological Survey till-matrix compilation 3: ICP-AES after aqua-regia on the clay size-fraction ($<2\ \mu\text{m}$) of till matrices - March 2020



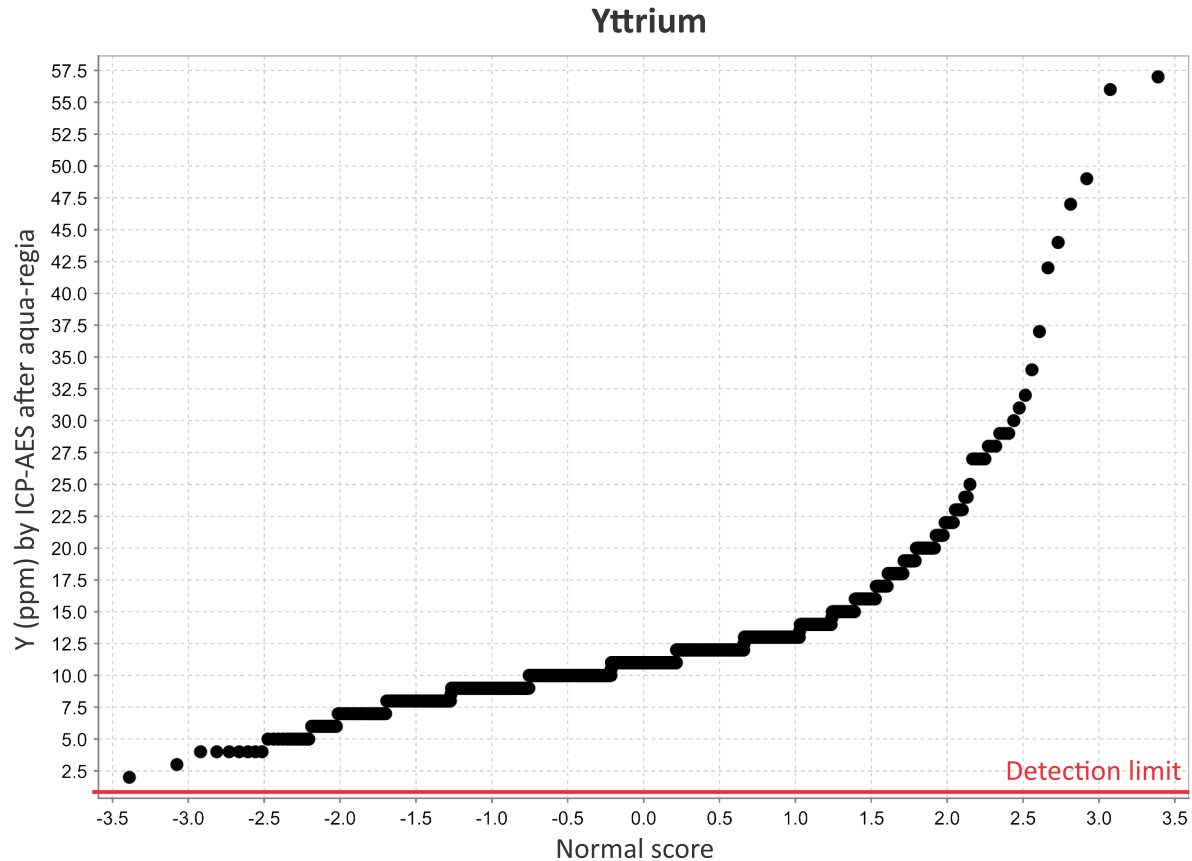
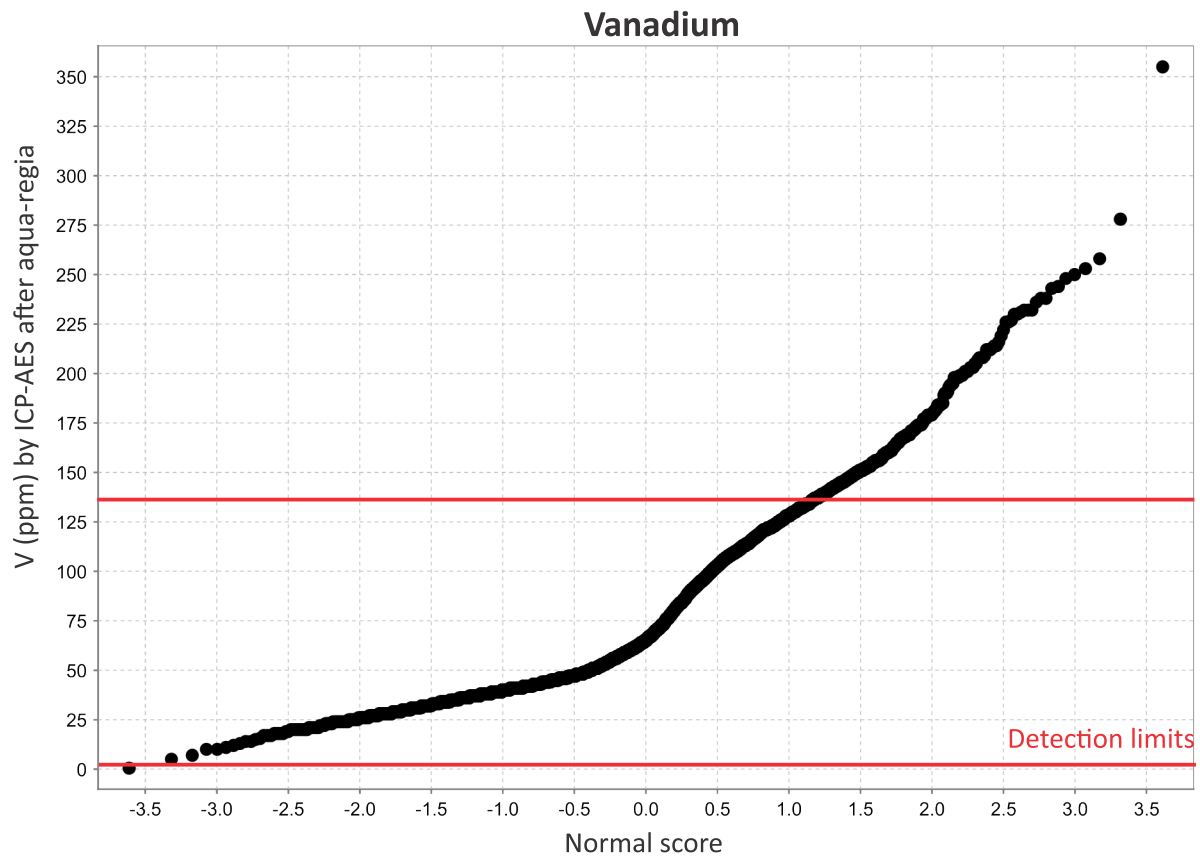
Appendix 3: Manitoba Geological Survey till-matrix compilation 3: ICP-AES after aqua-regia on the clay size-fraction ($<2\ \mu\text{m}$) of till matrices - March 2020



Appendix 3: Manitoba Geological Survey till-matrix compilation 3: ICP-AES after aqua-regia on the clay size-fraction ($<2\ \mu\text{m}$) of till matrices - March 2020



Appendix 3: Manitoba Geological Survey till-matrix compilation 3: ICP-AES after aqua-regia on the clay size-fraction (<2 μm) of till matrices - March 2020



Appendix 3: Manitoba Geological Survey till-matrix compilation 3: ICP-AES after aqua-regia on the clay size-fraction ($<2\ \mu\text{m}$) of till matrices - March 2020

