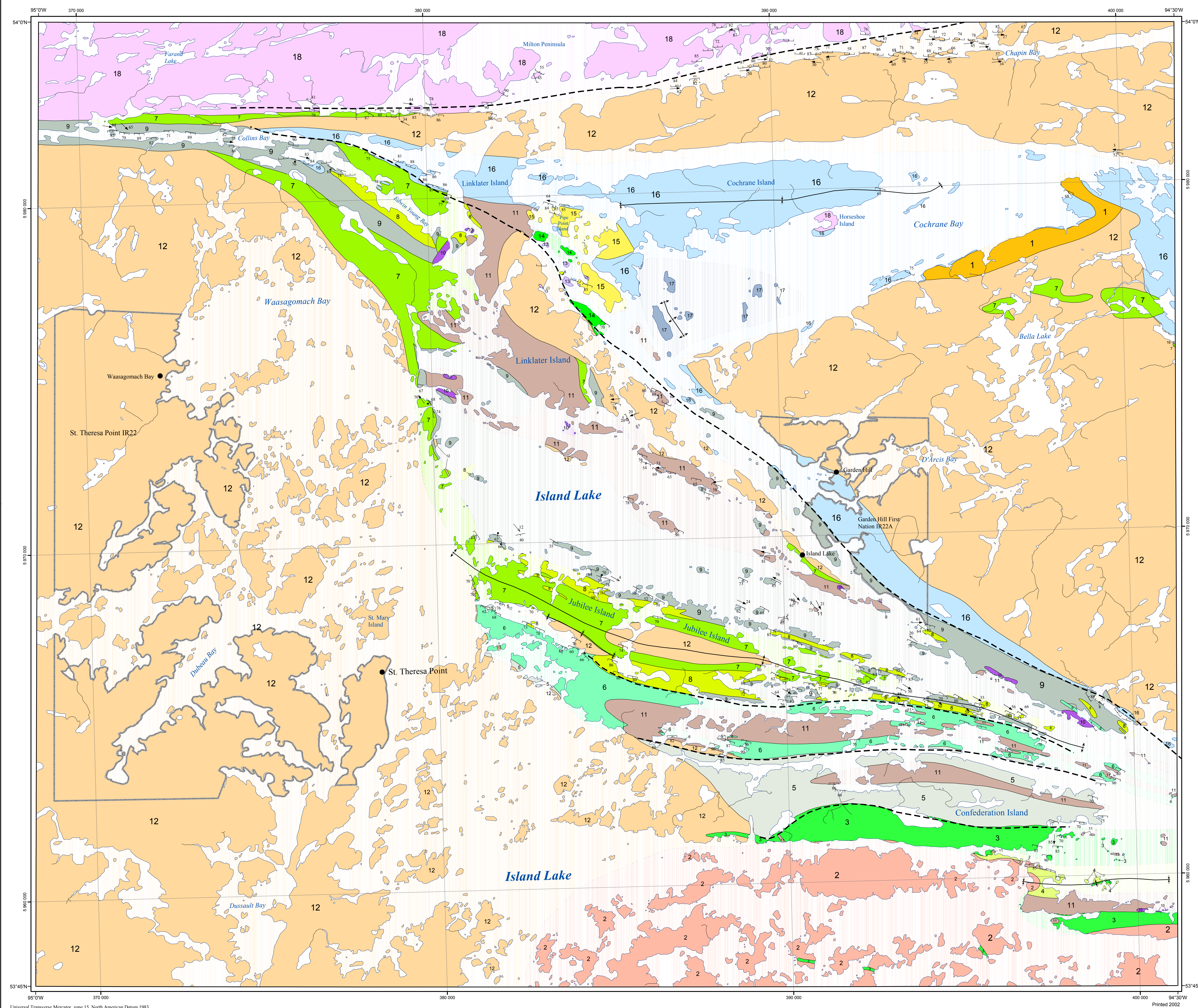




Preliminary Map PMAP2002-2

# Geology of the western portion of Island Lake (NTS 53E15)



## Legend

- Late Intrusive rocks**
  - 18 Granite, granodiorite, quartz-feldspar porphyry
- Island Lake Group**
  - 17 Greywacke, siltstone, argillite
  - 16 Polymictic conglomerate, arkosic and felspathic wackes, siltstone
- Pipe Point Island Package**
  - 15 Felsic volcanic flows and fragmental rocks and related porphyry intrusive rock
  - 14 Pillowed basalt flows
  - 13 Ultramafic intrusive rock
- Intrusive Rocks**
  - 12 Tonalite, granite, granodiorite, quartz-feldspar porphyry
  - 11 Mafic intrusive rock
  - 10 Ultramafic intrusive rock
- Hayes River Group**
  - 9 Greywacke, siltstone, argillite, monomictic conglomerate
  - 8 Felsic volcanic flows and fragmental rock
  - 7 Pillowed and massive basalt flows
- Middle Package**
  - 6 Mafic volcanic rock
  - 5 Greywacke, siltstone, argillite
- Southern Package**
  - 4 Felsic to intermediate volcanic flows and fragmental rock
  - 3 Pillowed and massive basalt flows
- Early Plutonic Rocks**
  - 2 Tonalite gneiss
  - 1 Tonalite and tonalite gneiss

## Symbols

- Bedding**
  - Bedding, tops known
  - Bedding, tops overturned
  - Bedding, tops unknown
- Foliation**
  - Foliation, age 1
  - Foliation, age 2
- Linear structure**
  - Lineation, age unknown
  - Fold axis, age unknown
- Folds**
  - anticline
  - syncline
- Faults**
  - Fault
- Contact**
  - Defined
  - Extrapolated
- Other features**
  - Indian Reserve

Geology by:  
J. Parks

University of Waterloo  
Geology adapted from Theyer (2000) and H.P. Gilbert and P. Theyer (unpublished compilation of Island Lake)

Published by:  
Manitoba Industry, Trade and Mines  
Manitoba Geological Survey

## REFERENCES

Theyer, P. 2000. Mineral deposits and occurrences in the Island Lake area, NTS 53E/15, 16, 53F/13 and parts of 53E/9, /10, 53F/12; Manitoba Industry, Trade and Mines, Geological Survey, Mineral Deposit Series Report No. 32, 183 p., includes 3 colour maps, scale 1:50 000.

## SUGGESTED REFERENCE FOR THIS MAP

Parks, J. 2002. Geology of the western portion of Island Lake (NTS 53E15); Manitoba Industry, Trade and Mines, Manitoba Geological Survey, Preliminary Map PMAP2002-2, scale 1:50 000.

Magnetic declination (2002) 1°44' east  
decreasing by 3.5' annually

