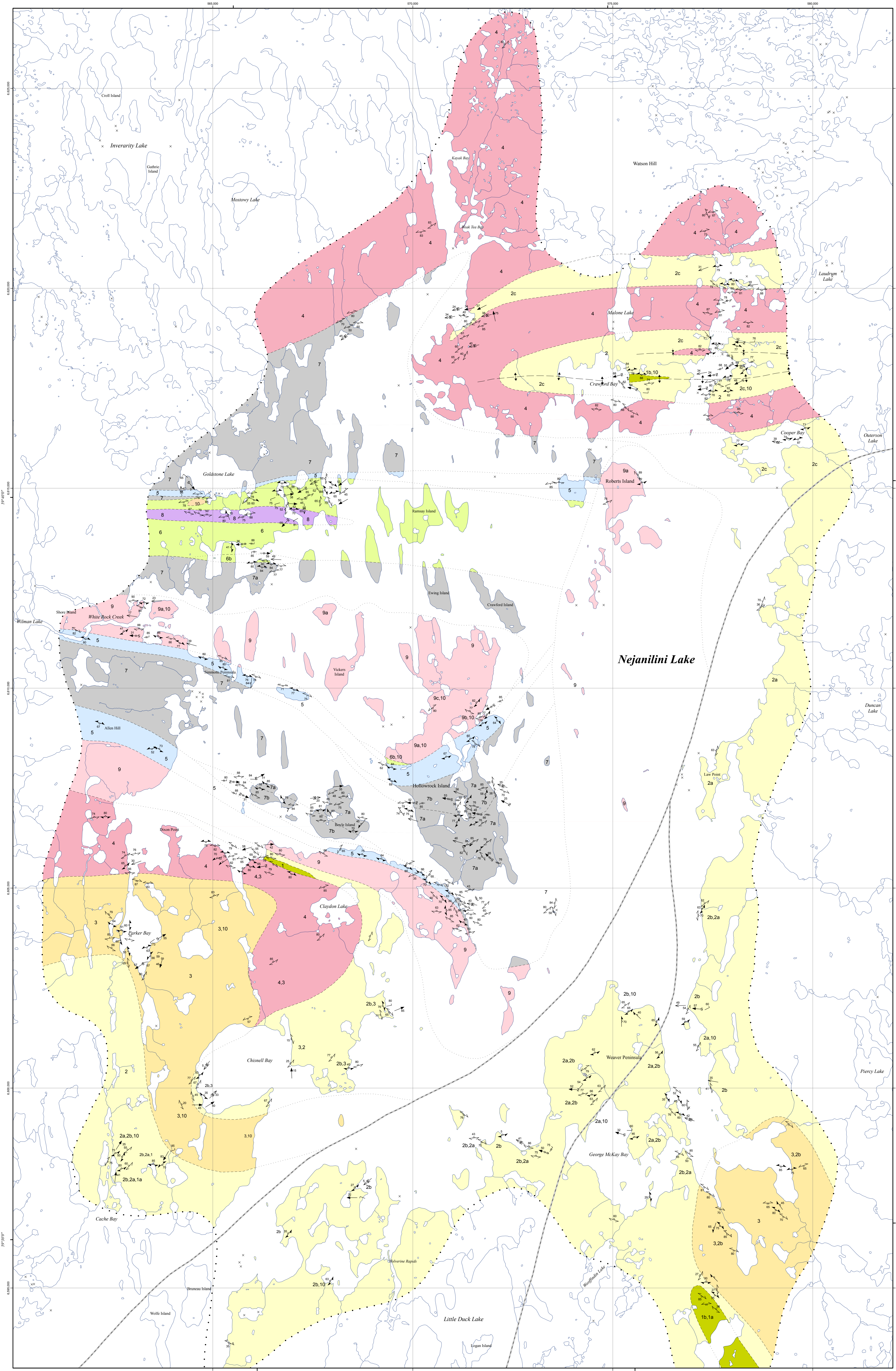




Bedrock geology of Nejanilini Lake, Manitoba (parts of NTS 64P5, 12 and 13)

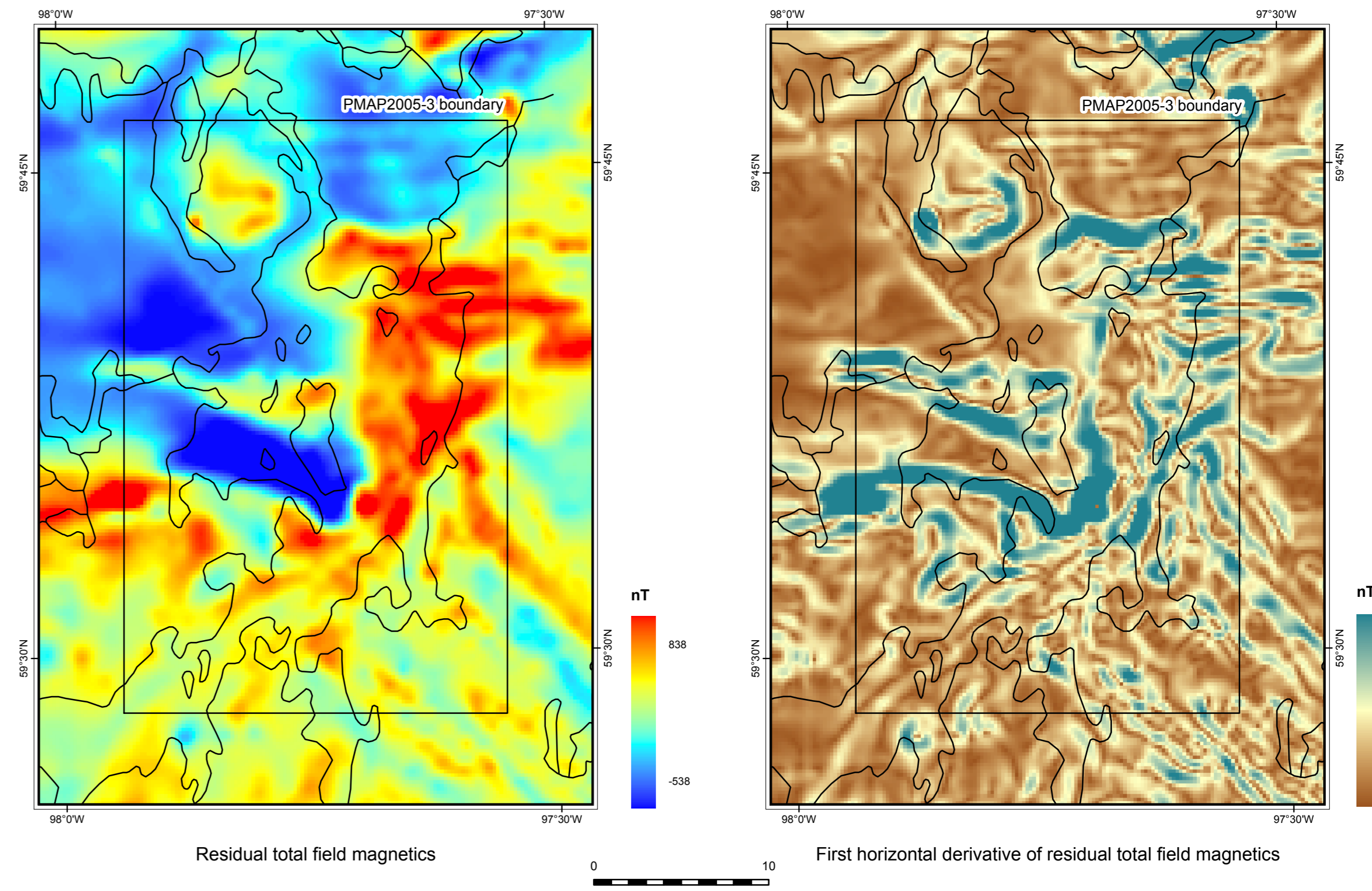


Legend

- Paleoproterozoic rocks**
- 10 Monzogranite and syenite
 - Leucogranite
 - 9c contains enclaves of 1a
 - 9b contains enclaves of 7a
 - 9a massive, foliated biotite leucogranite
- Archean and/or Paleoproterozoic rocks**
- Nejanilini Lake supracrustal rocks**
- 8 Metagabbro
 - 7 Sempititic paragneiss
 - 7b includes 1-5% calcisilicate layers
 - 7a biotite-sillimanite-cordierite sigmoidal paragneiss
 - 6 Calcisilicate paragneiss
 - 6b contains 10-30% 7a
 - 6a thinly-layered calcisilicate gneiss
 - 5 Quartzite
- Archean rocks**
- 4 K-feldspar porphyritic granite and monzogranite
 - 3 Foliated granite and charnockite
 - 2 Biotite ophiolite and enderbite
 - 2c heterogeneous, well-layered enderbite gneiss
 - 2b layered biotite ophiolite and enderbite gneiss
 - 2a massive to weakly foliated biotite ophiolite and enderbite
 - 1 Mafic granulite and amphibolite
 - 1b mafic granulite
 - 1a amphibolite gneiss

Symbols

- Contact**
- approximate, assumed
- Fold axis**
- antiform
 - synform
- Aeromagnetic trend**
- aeromagnetic trend (possible fault)
- Other**
- limit of mapping
- Lineation**
- mineral lineation, rodding, lineation
- Minor fold axis**
- symmetric; generation 2, 3, unknown
 - S asymmetric; generation 2, 3, unknown
 - Z asymmetric; generation 2, 3, unknown
 - symmetry unknown, generation 2
- Schistosity**
- generation 1, 2, 3, unknown
- Gneissosity**
- generation 1, 2, unknown
- Fracture cleavage**
- generation 2, 3, unknown
- Shear band**
- sinistral; generation 2, unknown
 - dextral; generation 3, unknown
- Fault, shear**
- fault; dextral
 - shear
- Axial plane of minor fold**
- generation 2, 3, unknown



Geology by: S.D. Anderson and C.O. Böhm (2005)

Published by Manitoba Industry, Economic Development and Mines Manitoba Geological Survey, 2005

This map is a provisional summary of work carried out during the summer field season and is produced directly from the geologist's manuscript. It is not to be regarded as a final interpretation of the geology of the area.

SUGGESTED REFERENCE
Anderson, S.D. and Böhm, C.O. 2005. Bedrock geology of Nejanilini Lake, Manitoba (parts of NTS 64P5, 12 and 13). Manitoba Industry, Economic Development and Mines, Manitoba Geological Survey. Preliminary Map PMAP2005-3, scale 1:35 000.

