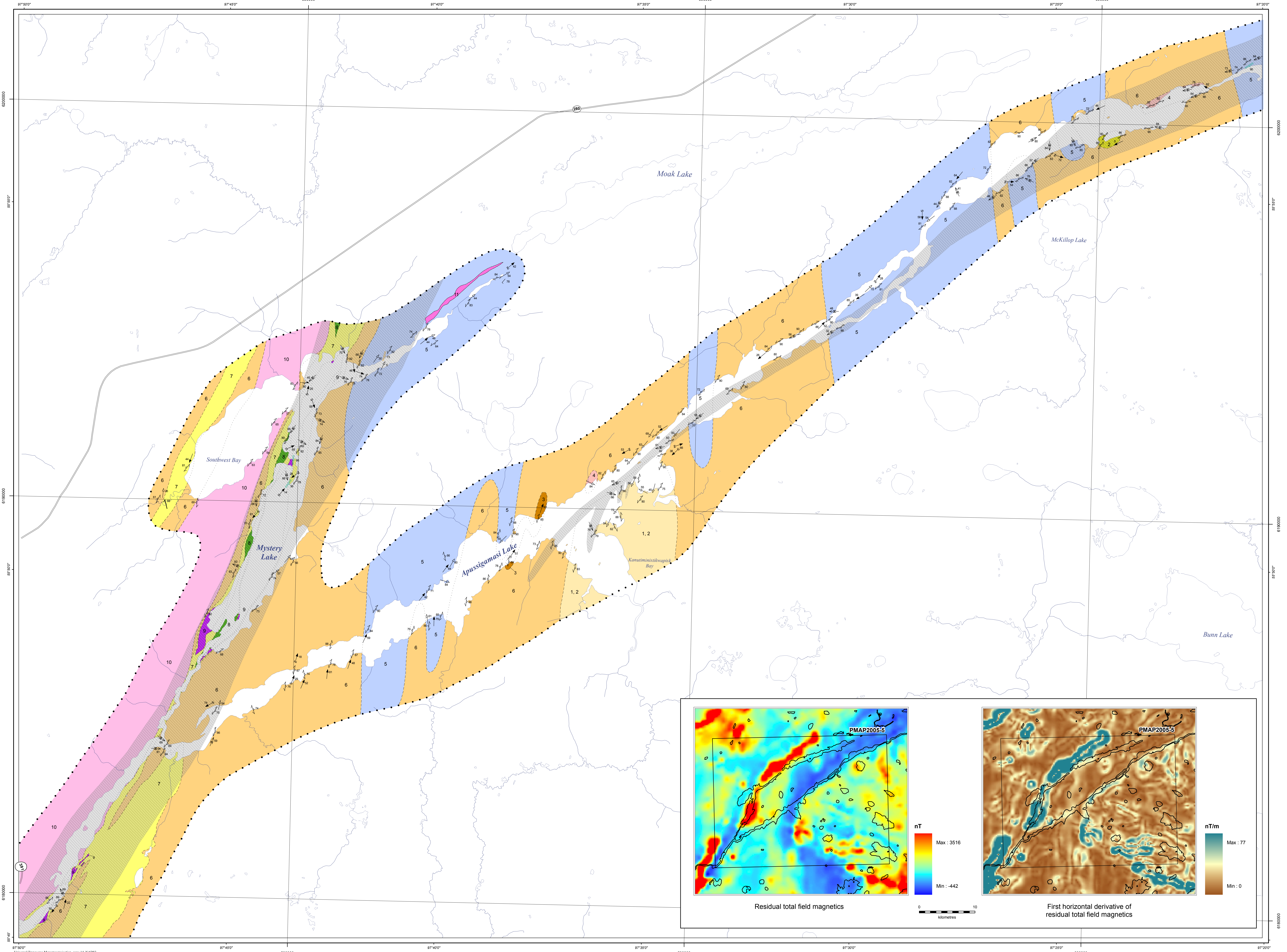


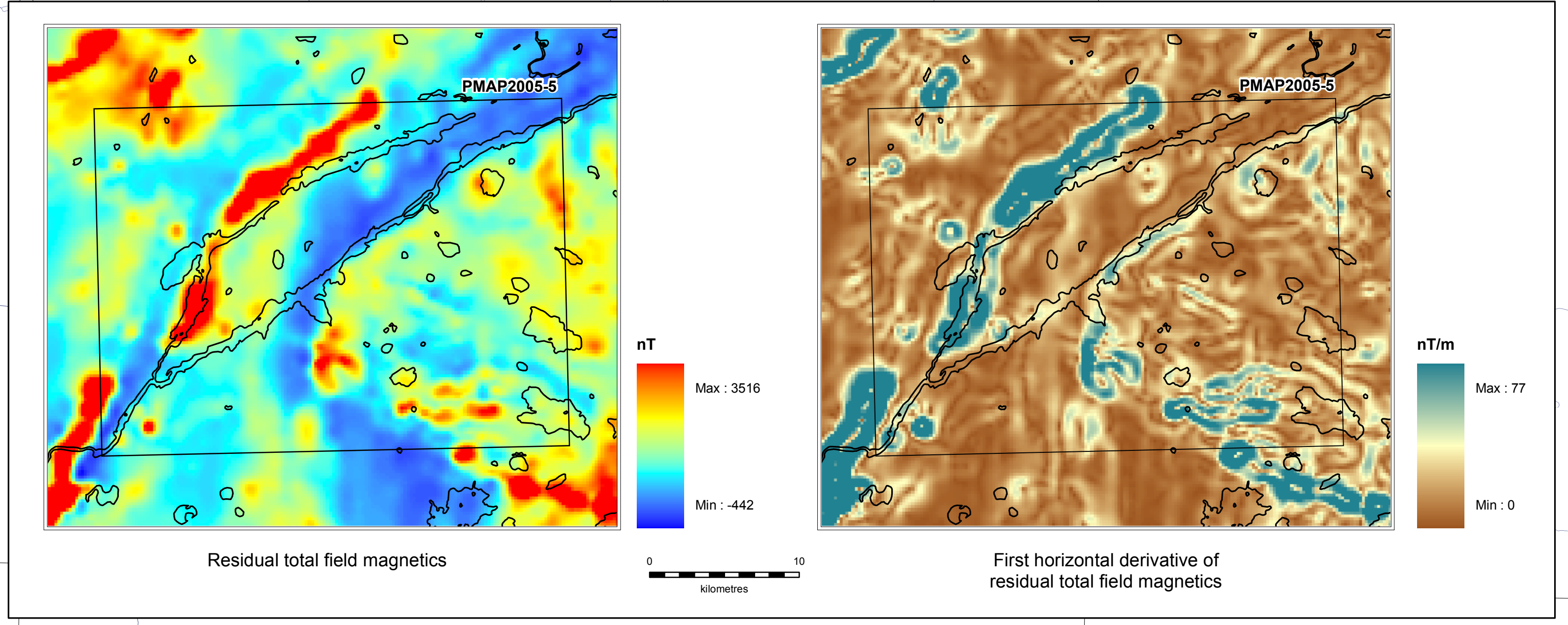


### Structural geology of the Mystery–Apussigamasi lakes area, Manitoba (parts of NTS 63P13 and 14)



- #### Legend
- Paleoproterozoic rocks**
- 11 Pegmatite
  - 10 Biotite granodiorite and granite gneiss (Mystery Lake intrusion); medium-grained and homogeneous; locally contains feldspar augen
  - 9 Ultramafic rocks
  - 8 Oswagan Group mafic volcanic rocks (Bah Lake assemblage)
  - 7 Oswagan Group metasedimentary rocks: biotite-garnet semipelitic schist; contains cm-scale isoclinally folded quartz-feldspar layers; some brown rusty layers occur
- Archean rocks**
- 6 Lit-par-lit gneiss: medium grained with pink and grey layers (depending on concentration of K-feldspar and mafic minerals); hornblende and/or biotite bearing; contains isoclinally folded as well as undeformed pink and white apilites, and undeformed or foliated pink pegmatites; some amphibolite xenoliths are present; undivided gneiss west of Mystery Lake intrusion (10)
  - 5 Hornblende-biotite granodiorite gneiss: medium grained; contains amphibolite rafts; locally migmatitic; crosscut by undeformed and folded apilite and pegmatite veins
  - 4 Granite gneiss: medium grained; pink
  - 3 Biotite schist: medium to fine grained; cm-scale, isoclinally folded, quartz-feldspar layers are present
  - 2 Mafic granulite: fine to medium grained; contains layers of melt and garnet-rich layers
  - 1 Biotite enderbite gneiss: medium grained

- #### Symbols
- Contacts**
- - - - - Approximate
  - ..... Assumed
  - ..... Limit of mapping
  - Road
  - ▨ Zones of protomylonite and mylonite; derived from various rock types; brecciated locally along the north-eastern part of the map area
- Planar structures**
- ↗ Gneissosity/schistosity
  - ↘ Dextral shear
  - ↖ Mylonitic foliation
  - ⊥ Minor fold axial plane
  - Mafic dike
  - Felsic dike
- Lineations**
- ↗ Fold axis, S asymmetric
  - ↖ Fold axis, symmetry unknown
  - ↘ Fold axis, Z asymmetric
  - ↖ Mineral lineation
  - ↗ Intersection lineation
  - ↖ Slicken striae



Geology by:  
Y.D. Kuiper<sup>1</sup> (2005)

<sup>1</sup>Department of Earth Sciences, University of Waterloo, Waterloo, Ontario N2L 2G1



Published by:  
Manitoba Industry, Economic Development and Mines,  
Manitoba Geological Survey, 2005

This map is a provisional summary of work carried out during the summer field season and is produced directly from the geologist's manuscript. It is not to be regarded as a final interpretation of the geology of the area.

SUGGESTED REFERENCE:  
Kuiper, Y.D., 2005: Structural geology of the Mystery–Apussigamasi lakes area, Manitoba (parts of NTS 63P13 and 14); Manitoba Industry, Trade and Mines, Manitoba Geological Survey, Preliminary Map PMAP2005-5, scale 1:35 000.

Source for Mystery Lake geology:  
Thompson Nickel Belt Geology Working Group 2001: Geology of the Mystery Lake (63P13) area, Manitoba Industry, Trade and Mines, Manitoba Geological Survey, Preliminary Map 2001-4, scale 1:50 000.

