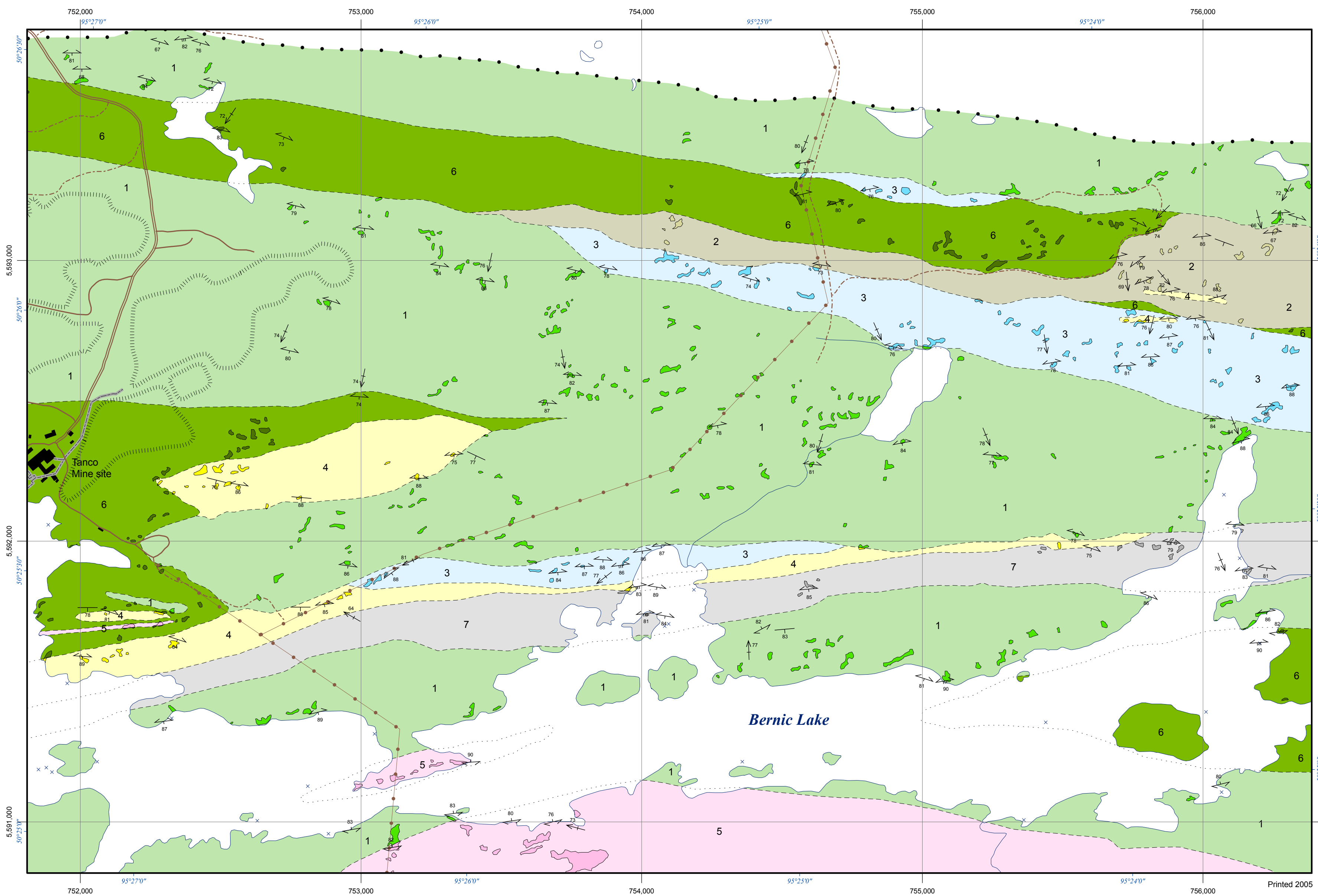




Geology of the Bernic Lake Formation, Tanco mine area, southeastern Manitoba (part of NTS 52L6)



Legend

Archean

- 7** Tectonite; derived from units 1 and 4
- 6** Polyphase mafic intrusive rocks; gabbro, diorite, quartz diorite
- 5** Grandiorite
- 4** Volcanic conglomerate, coarse- to fine-grained sandstone
- 3** Dacite, massive to fragmental
- 2** Intermediate volcanic rocks with minor basalt
- 1** Basalt, pillowed to massive, with minor andesite and andesitic volcanic breccia

Symbols

- - - Geological contact; approximate
- Geological contact; assumed
- • • Limit of mapping
- ↖ Primary layering
- ↗ Foliation; generations 1 and 2, and 3
- ↘ Lineation; generations 1 and 2
- ||||| Tailings pond
- Two lane road
- Gravel road
- - - Trail
- Conveyor
- Power line
- Building
- x Reef

Geology by:
P.D. Kremer¹ (2005)

¹ Department of Earth Sciences, University of Waterloo,
Waterloo, Ontario N2L 3G1

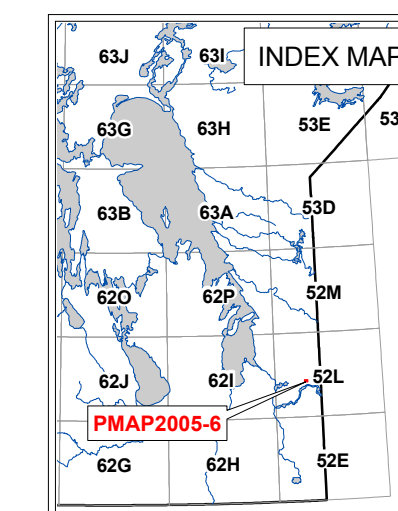


Published by:
Manitoba Industry, Economic Development and Mines
Manitoba Geological Survey, 2005

This map is a provisional summary of work carried out during the summer field season and is produced directly from the geologist's manuscript. It is not to be regarded as a final interpretation of the geology of the area.

SUGGESTED REFERENCE

Kremer, P.D. 2005. Geology of the Bernic Lake Formation, Tanco mine area, southeastern Manitoba (part of NTS 52L6); Manitoba Industry, Economic Development and Mines, Manitoba Geological Survey, Preliminary Map PMAP2005-6, scale 1:10 000.



Universal Transverse Mercator Projection; zone 14, NAD83

