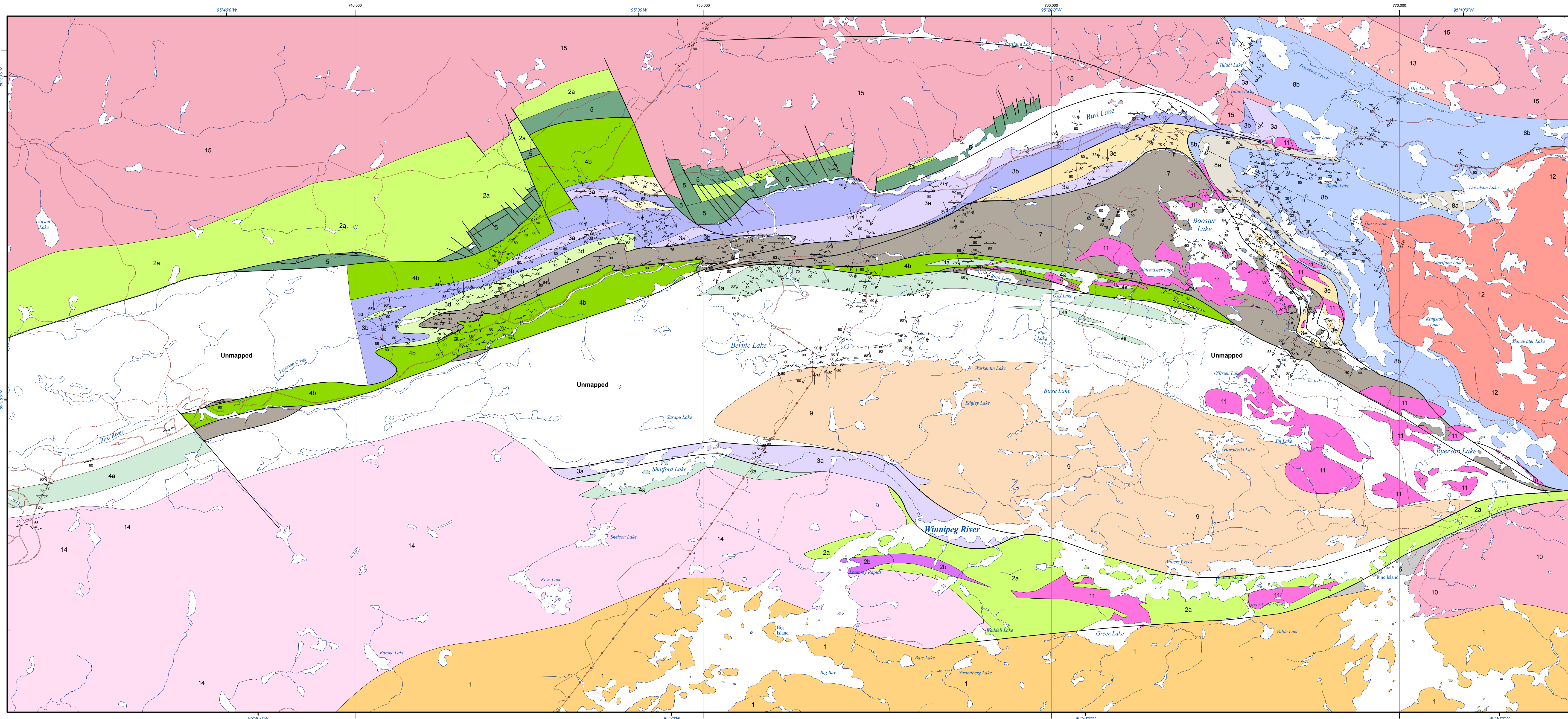


# Geology of the Bird River area, southeastern Manitoba (parts of NTS 52L5 and 6)



## Legend

### ARCHEAN

#### Intrusive rocks

- 15 Tonalite, granodiorite; Maskawa Lake batholith
- 14 Granite; Lac du Bonnet batholith
- 13 Granite
- 12 Granite; Marijane Lake batholith
- 11 Pegmatitic granite
- 10 Granodiorite
- 9 Tonalite, granodiorite; locally quartz + feldspar porphyritic

#### Flanders Lake Formation

- 8b Arenite
- 8a Polymictic conglomerate

#### Booster Lake Formation

- 7 Greywacke; turbidite

#### Eaglest Lake Formation

- 6 Volcanic sandstone

#### Bird River Sill

- 5 Peridotite, serpentinite, gabbro

#### Bernic Lake Formation

- 4b Volcanic sandstone, conglomerate; undifferentiated
- 4a Basalt; pillow, massive

#### Peterson Creek Formation

- 3e Schist; garnet-biotite-mica bearing +/- rhyolite +/- sandstone
- 3d Rhyolite
- 3c Volcanic sandstone, volcanic breccia
- 3b Tuff +/- rhyolite +/- volcanic sandstone
- 3a Lapillistone, volcanic conglomerate +/- tuff +/- rhyolite

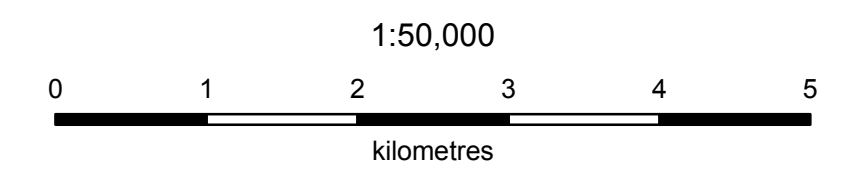
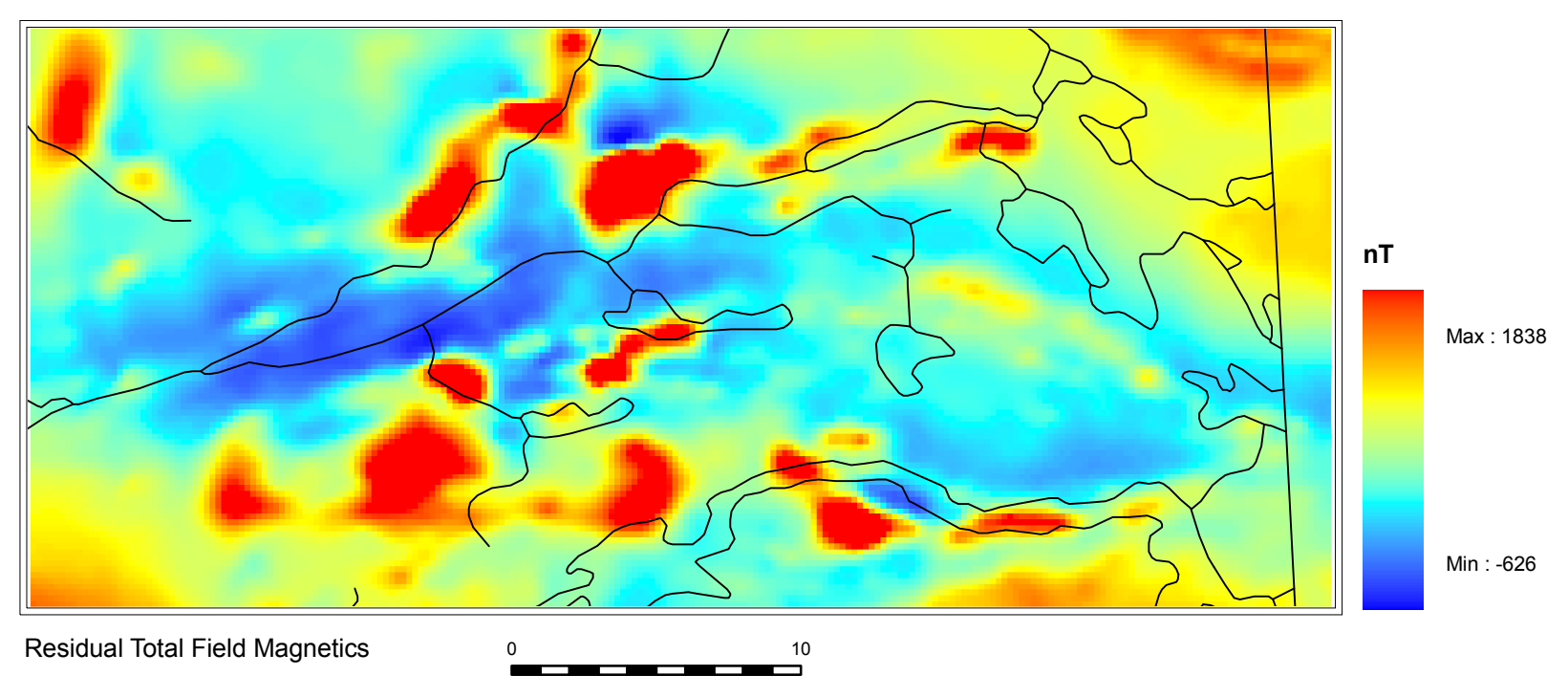
#### Lamprey Falls Formation

- 2b Gabbro
- 2a Basalt

#### Winnipeg River Subprovince

- 1 Tonalite and associated granitic gneiss

Universal Transverse Mercator projection, zone 14, NAD83 Printed 2005



## Symbols

- |                    |                   |                    |                   |
|--------------------|-------------------|--------------------|-------------------|
| <b>Bedding</b>     | <b>Lineations</b> | <b>Fault trace</b> | <b>Reef</b>       |
| Upright            | Crenulation       | Antiform           | Powerline         |
| Tops unknown       | Lineation         | Synform            | Road              |
| <b>Foliation</b>   | Mineral lineation |                    | Road, limited use |
| Generation 1       |                   |                    | Trail             |
| Generation 2       |                   |                    |                   |
| Generation unknown |                   |                    |                   |

## Geology by: M. Duguet (2005)

Published by: Manitoba Industry, Economic Development and Mines  
Manitoba Geological Survey, 2005

This map is a provisional summary of work carried out during the summer field season and is produced directly from the geologist's manuscript. It is not to be regarded as a final interpretation of the geology of the area.

This map is primarily based on new mapping by the author but also incorporates modified information from Cerny et al. Map ER80-1-1

Cerny, P., Trueman, D.L., Ziehlke, D.V., Goad, B.E., and Paul, B.J., 1981: The Cat-Winnipeg River and the Wekusko Lake pegmatite fields; in Economic Geology Report ER80-1, Mineral Resources Division.

SUGGESTED REFERENCE  
Duguet, M. 2005: Geology of the Bird River area, southeastern Manitoba (parts of NTS 52L5 and 6); Manitoba Industry, Economic Development and Mines, Manitoba Geological Survey, Preliminary Map PMAP2005-7, scale 1:50 000.

