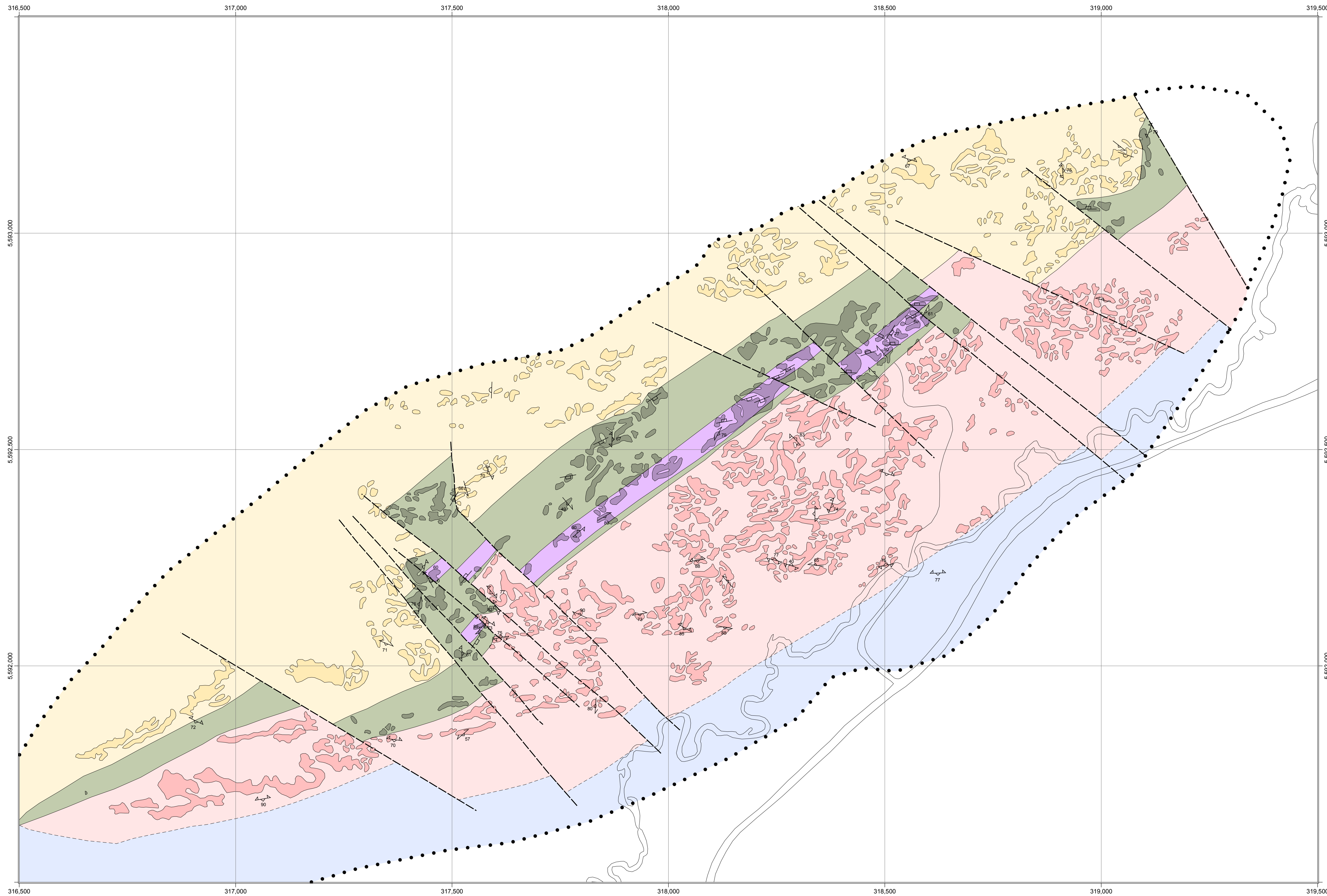




Geology of the Chrome Property, Bird River Sill, southeastern Manitoba (part of NTS 52L5)



Legend

Archean

Bird River Sill

- 3c Gabbro, leucogabbro
- 3b Chromiferous peridotite
- 3a Peridotite, pyroxenite

Bernic Lake Formation

- 2 Basalt to andesite, flows and volcaniclastic rocks

Lamprey Falls Formation

- 1 Basalt flows, pillowed to massive, aphyric

Symbols

Geological contacts

- Defined
- Assumed
- Fault
- Limit of mapping
- Pillows; tops unknown
- Igneous layering; tops unknown
- Foliation
- Fault; dextral
- Fault; sinistral
- Shear; generation and symmetry unknown

Geology by:
C.A. Mealin¹ (2005)

¹ Department of Earth Sciences, University of Waterloo,
Waterloo, Ontario N2L 3G1



Published by:
Manitoba Industry, Economic Development and Mines
Manitoba Geological Survey, 2005

This map is a provisional summary of work carried out during the summer field season
and is produced directly from the geologist's manuscript. It is not to be regarded as a
final interpretation of the geology of the area.

SUGGESTED REFERENCE
Mealin, C.A. 2005: Geology of the Chrome Property, Bird River Sill, southeastern
Manitoba (part of NTS 52L5); Manitoba Industry, Economic Development and Mines,
Manitoba Geological Survey, Preliminary Map PMAP2005-8, scale 1:5 000.

