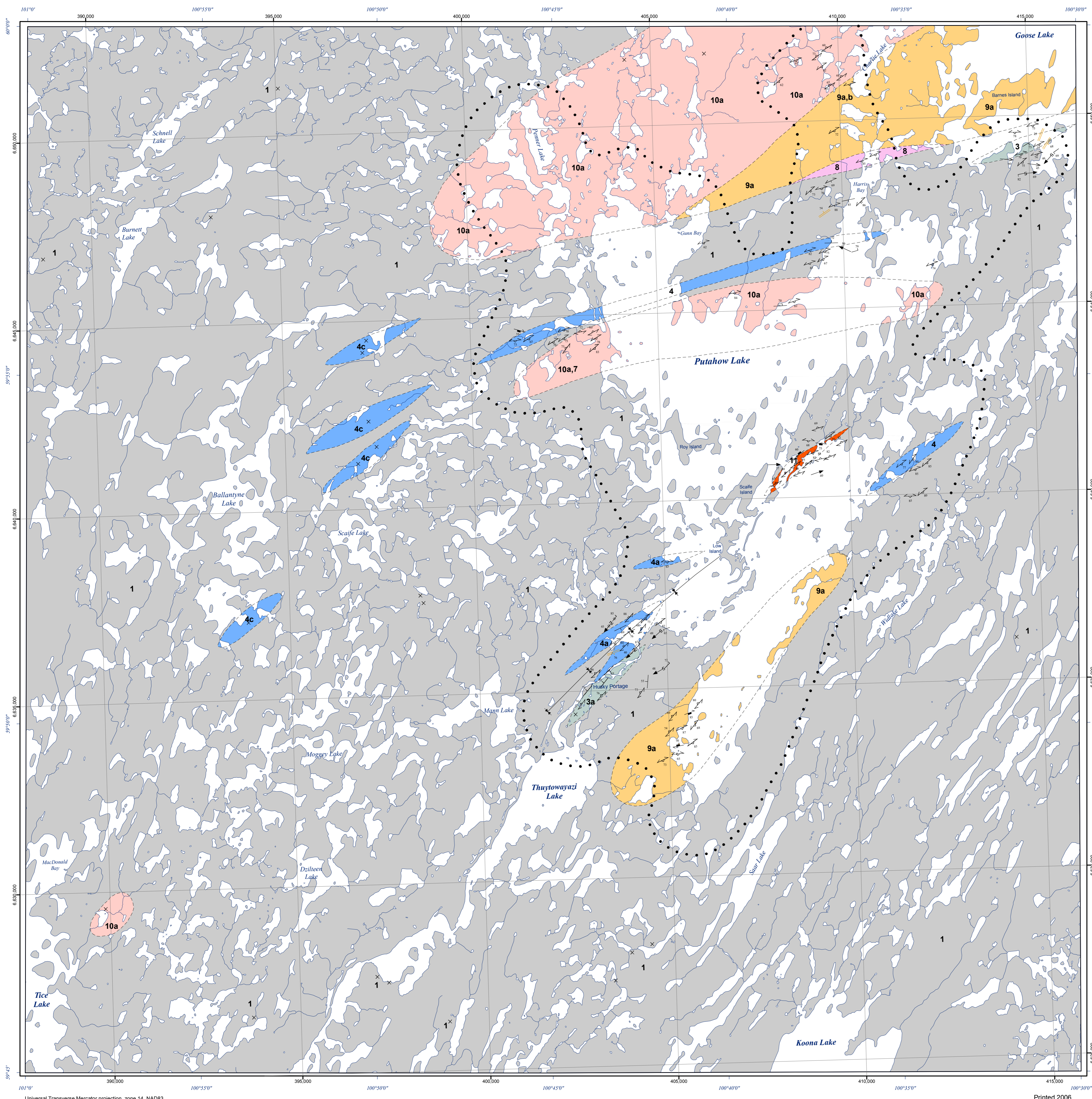


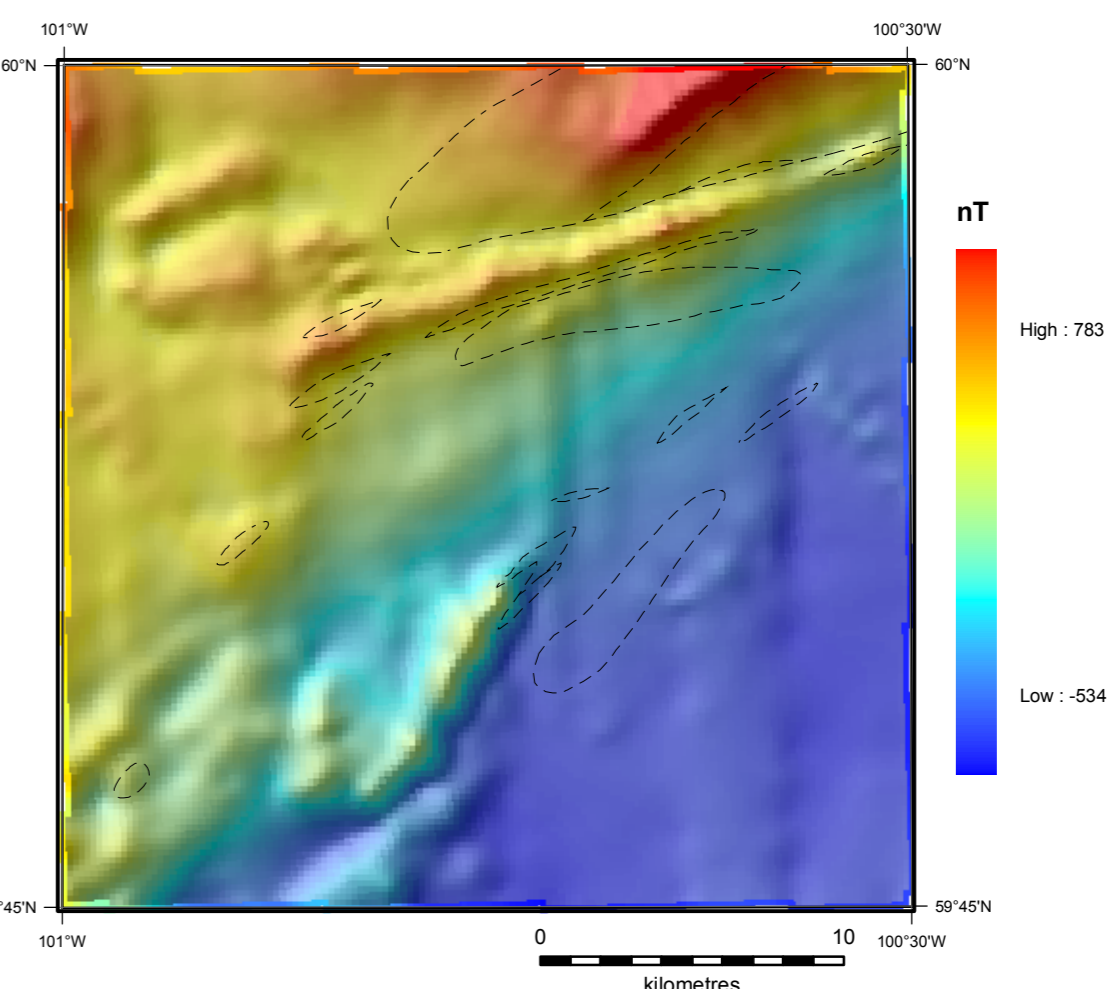


Bedrock geology of the Putahow Lake area, Manitoba (NTS 64N15)

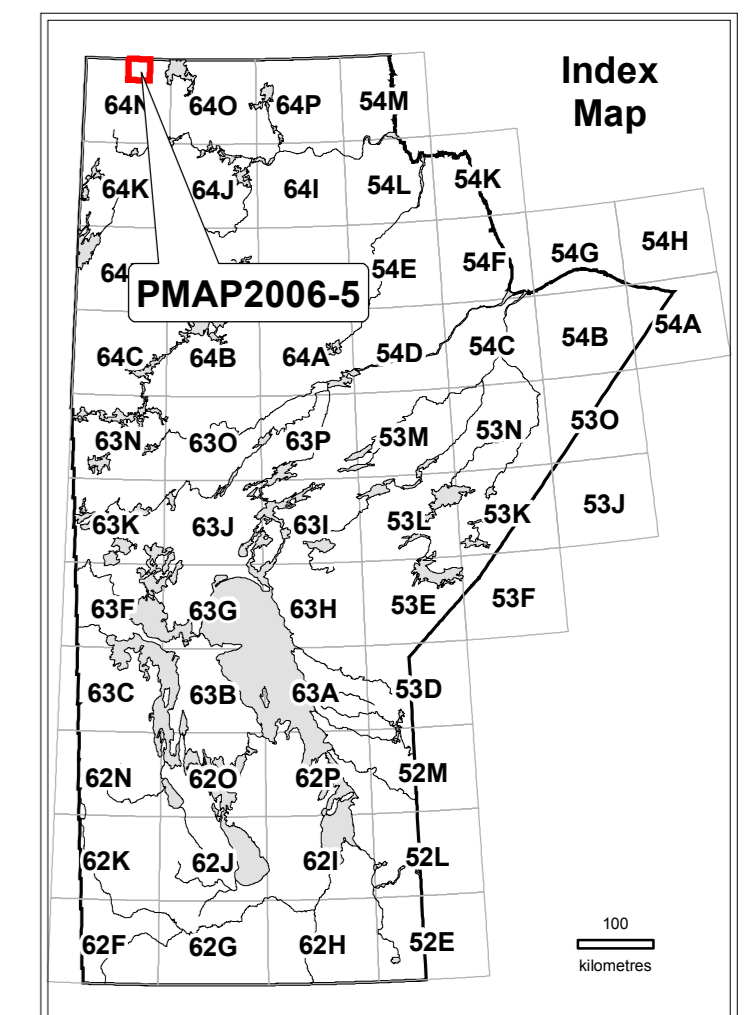


- ### Legend
- 12 Mafic dike
 - 11 Granitic pegmatite
 - 10 Pink leucogranite, syenogranite; locally pegmatitic
 - 10b contains abundant xenoliths
 - 10a fine to medium grained, weakly to moderately foliated, biotite-bearing
 - 9 White leucogranite, syenogranite; locally pegmatitic
 - 9b contains abundant xenoliths
 - 9a medium grained, weakly foliated, tourmaline ± garnet-bearing
 - 8 Porphyritic foliated granodiorite to granite
 - 7 Granitoid gneiss; white to light grey
 - 7b amphibolite enclave
 - 7a contains paragneiss enclaves
 - 6 Arkose
 - 6b arkosic wacke
 - 6a sillimanite-bearing
 - 5 Quartzite
 - 4 Calcareous rocks
 - 4c 'albite-pyroxene rock'; interpreted meta-evaporite (Weber et al., 1975)
 - 4b includes minor interlayered marble
 - 4a thinly-layered calcisiltate; intensely folded
 - 3 Psammitic paragneiss
 - 3a calcareous
 - 2 Graphitic biotite-rich semipelite
 - 1 Semipelite paragneiss
 - 1b graphitic
 - 1a calcareous
- Note: Units in screened type do not appear on this map sheet.

- ### Symbols
- Layering**
 - Paragneiss layering
 - Igneous layering, tops unknown
 - Foliation**
 - Generation 1, generation 2, generation unknown
 - Axial plane**
 - Generation 2, generation unknown
 - Minor fold axis**
 - Z-asymmetric, generation 2, generation unknown
 - S-asymmetric, generation unknown
 - Asymmetry and generation unknown
 - Shear band**
 - Dextral
 - Lineation**
 - Generation unknown
 - Dikes and sills**
 - Felsic dike
- x Isolated outcrop
 - - - Geological contact
 - ~ Syncline
 - Limit of new mapping
 - Reef



The magnetic data used in this map are derived from the Geological Survey of Canada's regional residual total field magnetic data with a pixel size of 200 m. The data are available from the Geological Survey of Canada through their download service at: http://gdr.agg.nrcan.gc.ca/wrms/index_e.html



Geology by: S.D. Anderson and C.O. Böhm (2006)

Includes geology modified from: Lamb, C.F. 1975. Putahow Lake, Map 74-2-3; in Geology of the Kasere Lake-Whiskey Jack Lake (North Half) Area, Manitoba Mines, Resources and Environmental Management, Mineral Resources Division, Publication 74-2, 163 p. * 24 maps at 1:50 000, 5 maps at 1:250 000, 1 map at 1:375 000.

Published by: Manitoba Science, Technology, Energy and Mines
Manitoba Geological Survey, 2006

This map is a provisional summary of work carried out during the summer field season and is produced directly from the geologist's manuscript. It is not to be regarded as a final interpretation of the geology of the area.

SUGGESTED REFERENCE
Anderson, S.D. and Böhm, C.O. 2006. Bedrock geology of the Putahow Lake area, Manitoba (NTS 64N15); Manitoba Science, Technology, Energy and Mines, Manitoba Geological Survey, Preliminary Map PMAP2006-5, scale 1:50 000.

