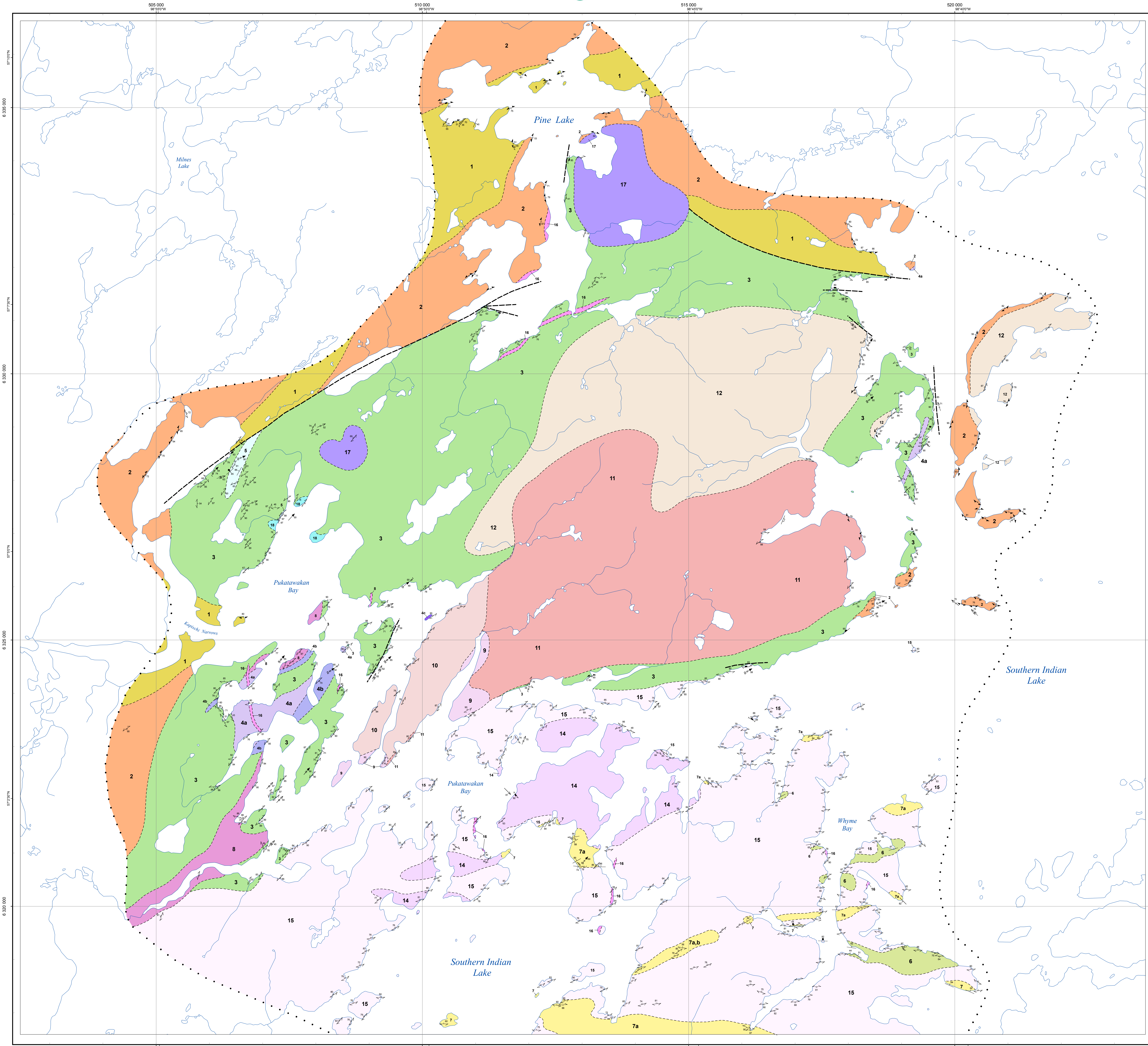




# Bedrock geology of the Pukatawakan Bay area, Southern Indian Lake, Manitoba (part of NTS 64G2)



- Legend**
- 19 Diabase (not mappable at this scale)
  - 18 Pegmatite alaskite
  - 17 Gabbro with lesser gabbro and anorthositic leucogabbro
  - 16 Granitic pegmatite
  - 15 K-feldspar porphyritic monzogranite and monzonite
  - 14 Gabbro, diorite, quartz diorite
  - 13 Quartz-phryic magnetite granodiorite
  - 12 Tonalite-granodiorite
  - 11 K-feldspar megacrystic granite and granodiorite
  - 10 K-feldspar megacrystic granodiorite: magnetiferous
  - 9 Porphyritic biotite granodiorite
  - 8 Tonalitic to granodioritic feldspar porphyry; fine-grained to pegmatite, trace garnet
  - 7a,b Magnetite-bearing sedimentary rocks: a) feldspathic arenite and lesser quartzite, b) polymictic conglomerate
  - 6 Massive and pillowed amygdaloidal basalt with interbedded heterolithic tuff breccia and mafic to intermediate turbiditic greywacke-mudstone; minor syn-volcanic gabbro and diabase dikes and sills, magnetiferous
  - 5 Psammite, psammopelite, and pelite: garnet-sillimanite bearing
  - Syn-volcanic intrusive rocks
    - 4a Gabbro, diabase
    - 4b Quartz diorite
    - 4c Peridotite
  - 3 Massive and pillowed aphyric basalt, ortho-amphibolite
  - 2 Tonalite-granodiorite-granite gneiss, variably migmatitic with rafts of paragneiss
  - 1 Pelitic to quartzofeldspathic migmatitic paragneiss, rare volcanic interlayers

- Symbols**
- Planar structures**
- Bedding: tops unknown, upright, overturned
  - Pillow: tops unknown
  - Foliation: generation unknown, 1st, 2nd, 3rd
  - Fold-axial plane: generation unknown, 1st, 2nd, 3rd
  - Igneous layering: tops unknown
  - Gneissosity: generation unknown, 1st, 2nd
  - Shear zones: sense unknown, dextral, normal, reverse
- Linear structures**
- Fold axis, generation unknown, 2nd: symmetry unknown
  - Fold axis, 2nd generation: Z asymmetry
  - Fold axis, generation unknown, 1st, 2nd: S asymmetry
  - Intersection lineation: 2nd generation
  - L-fabric: generation unknown, 1st, 2nd
  - L-fabric: mineral lineation
- Approximate contacts  
Fault  
Limit of mapping

**Geology by: P.D. Kremer**

Cartography by: M.E. McFarlane  
Published by: Manitoba Science, Technology, Energy and Mines  
Manitoba Geological Survey, 2008

This map is a provisional summary of work carried out during the summer field season and is produced directly from the geologist's manuscript. It is not to be regarded as a final interpretation of the geology of the area.

**SUGGESTED REFERENCE:**  
Kremer, P.D. 2008: Bedrock geology of the Pukatawakan Bay area, Southern Indian Lake, Manitoba (part of NTS 64G2); Manitoba Science, Technology, Energy and Mines, Manitoba Geological Survey, Preliminary Map PMAP2008-3, scale 1:25 000.

