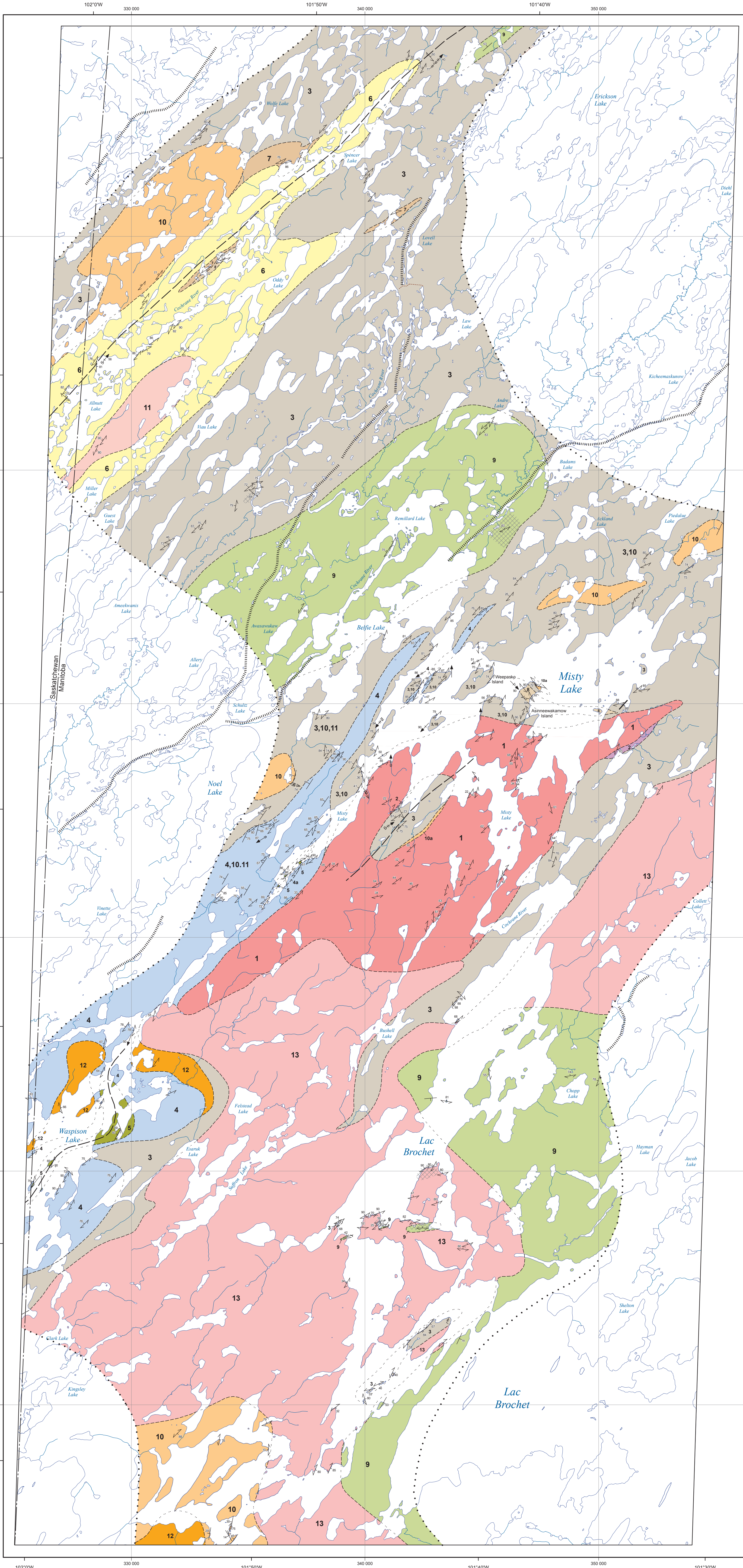


Geology of the Misty Lake area, northwestern Manitoba (parts of NTS 64K12, 13, 64N4)



Legend

- Alkali metasomatism: albite-clinopyroxene-amphibole ± fluorite ± scapolite ± calcite
- 13** Granite to monzogranite: medium grained to pegmatitic, massive
- 12** Leucogranite: locally pegmatitic
- 11** Monzogranite to syenogranite: medium grained to pegmatitic, locally strongly magnetiferous
- 10** Tonalite, granodiorite, granite: medium to coarse grained, massive to weakly foliated
 - a) pegmatitic
 - b) garnet ± cordierite porphyroblastic
 - c) feldspar-phyrlic
- 9** Quartz and feldspathic arenite, calcareous arenite with minor calcisilicate interlayers
- 8** Feldspar augen paragneiss
- 7** Massive to crudely bedded arkosic arenite
- 6** Psammitic biotite gneiss: well-layered, non-porphyroblastic, non-magnetiferous
- 5** Calcisilicate and marble
- 4** Arkosic to semipelitic gneiss-cordierite porphyroblastic
 - a) arkosic arenite with calcisilicate boudins, well-layered
- 3** Psammitic to pelitic gneiss: garnet-cordierite ± sillimanite porphyroblastic, variably migmatitic, weakly to moderately magnetiferous
- 2** Enderbite: fine to medium grained, massive
- 1** Tonalite to granodiorite: biotite ± hornblende ± orthopyroxene-bearing; well-foliated, locally gneissic

Symbols

Planar structure

- Bedding: tops unknown
- Foliation: generation 1, 2
- Fold-axial plane: generation unknown, 2
- Vein

Linear structure

- L-fabric: generation 2, mineral lineation, rodding
- Fold axis: generation unknown, 1, 2
- Fold axis: S symmetry, generation 1, 2
- Fold axis: Z symmetry, generation 2
- Fold axis: symmetric, generation unknown, 2

Geological contact: approximate, underwater

Fold axial trace: generation 2

Esker

Limit of mapping

Trail

Geology by: P.D. Kremer, A.R. Carlson, and C.G. Couéslan

Cartography by: M.E. McFarlane

Published by:
Manitoba Innovation, Energy and Mines
Manitoba Geological Survey, 2010

This map is a provisional summary of work carried out during the summer field season and is produced directly from the geologist's manuscript. It is not to be regarded as a final interpretation of the geology of the area.

SUGGESTED REFERENCE:
Kremer, P. D., Carlson, A. R. and Couéslan, C. G. 2010: Geology of the Misty Lake area, northwestern Manitoba (parts of NTS 64K12, 13, 64N4); Manitoba Innovation, Energy and Mines, Manitoba Geological Survey, Preliminary Map PMAP2010-2, scale 1:75 000.

Index map

