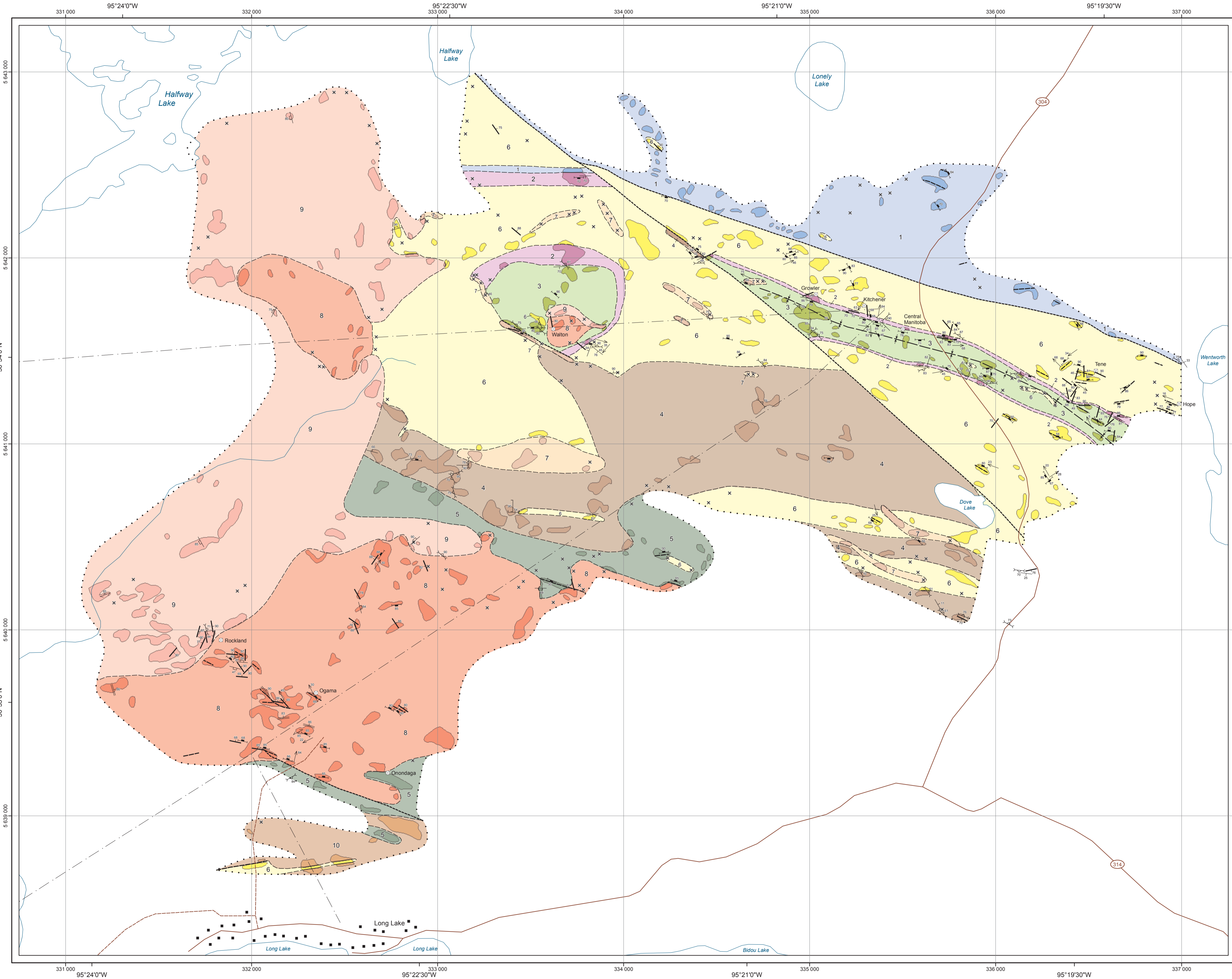




Geology of the Bidou assemblage in the vicinity of the southeastern margin of the Ross River pluton, Rice Lake belt, southeastern Manitoba (part of NTS 52L14)



Legend

- Ross River pluton**
 - 10 Quartz feldspar porphyry
 - 9 Granodiorite, minor monzogranite, alkali feldspar granite
 - 8 Tonalite, minor quartz diorite
- Mafic intrusions**
 - 7 Amphibolite and melanocratic gabbroic dikes
 - 6 Leucocratic and mesocratic gabbroic sills and dikes
- Gunnar formation**
 - 5 Pillowed basalt with radiating amygdules
- Dove Lake formation**
 - 4 Mafic to felsic lapilli tuff and crystal tuff
- Tinney Lake formation**
 - 3 Pillowed and massive basalt
 - 2 Interbedded feldspathic greywacke and mudstone, locally with chert and pebbly conglomerate
 - 1 Pillowed and massive basalt, locally with thin greywacke beds

Symbols

- Planar structure**
 - Foliation: generation unknown
 - Bedding: tops unknown
 - Shear zone
 - Spaced cleavage
 - Aplite dike
 - Quartz-feldspar porphyry dike
 - Vein
 - Joint
- Linear structure**
 - Lineation
- Geological contacts**
 - Shear zone: observed, inferred
 - Contact: observed, inferred
 - Syncline
 - Limit of mapping
- Cultural features**
 - 314 Provincial road
 - Light road
 - Transmission line (abandoned)
 - Small outcrop
 - Capped mine shaft
 - Building

Geology by: X. Zhou

Cartography by: M.E. McFarlane

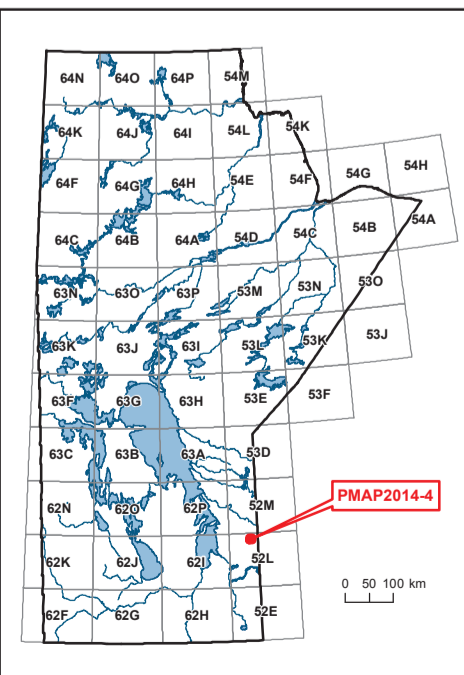
Published by:
Manitoba Mineral Resources
Manitoba Geological Survey, 2014

This map is available to download free of charge at www.manitoba.ca/minerals; to purchase a print copy, contact Publication Sales at 1-800-223-5215 or (204) 945-4154 or minesinfo@gov.mb.ca.

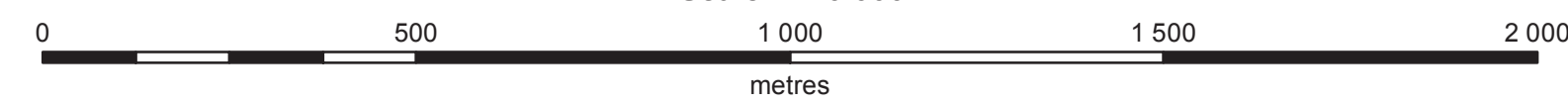
This map is a provisional summary of work carried out during the summer field season and is produced directly from the geologist's manuscript. It is not to be regarded as a final interpretation of the geology of the area.

SUGGESTED REFERENCE:
Zhou, X. 2014: Geology of the Bidou assemblage in the vicinity of the southeastern margin of the Ross River pluton, Rice Lake belt, southeastern Manitoba (part of NTS 52L14), Manitoba Mineral Resources, Manitoba Geological Survey, Preliminary Map PMAP2014-4, scale 1:10 000.

Location map



Scale: 1:10 000



NAD 83 UTM Zone 15

