
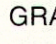
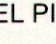
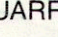
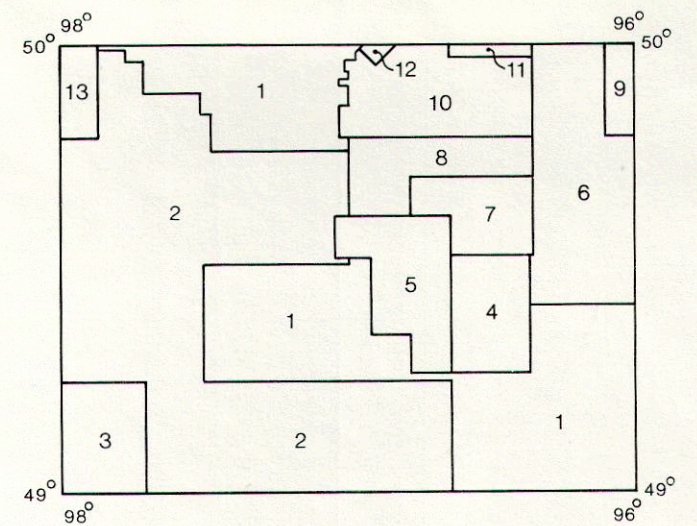


LEGEND

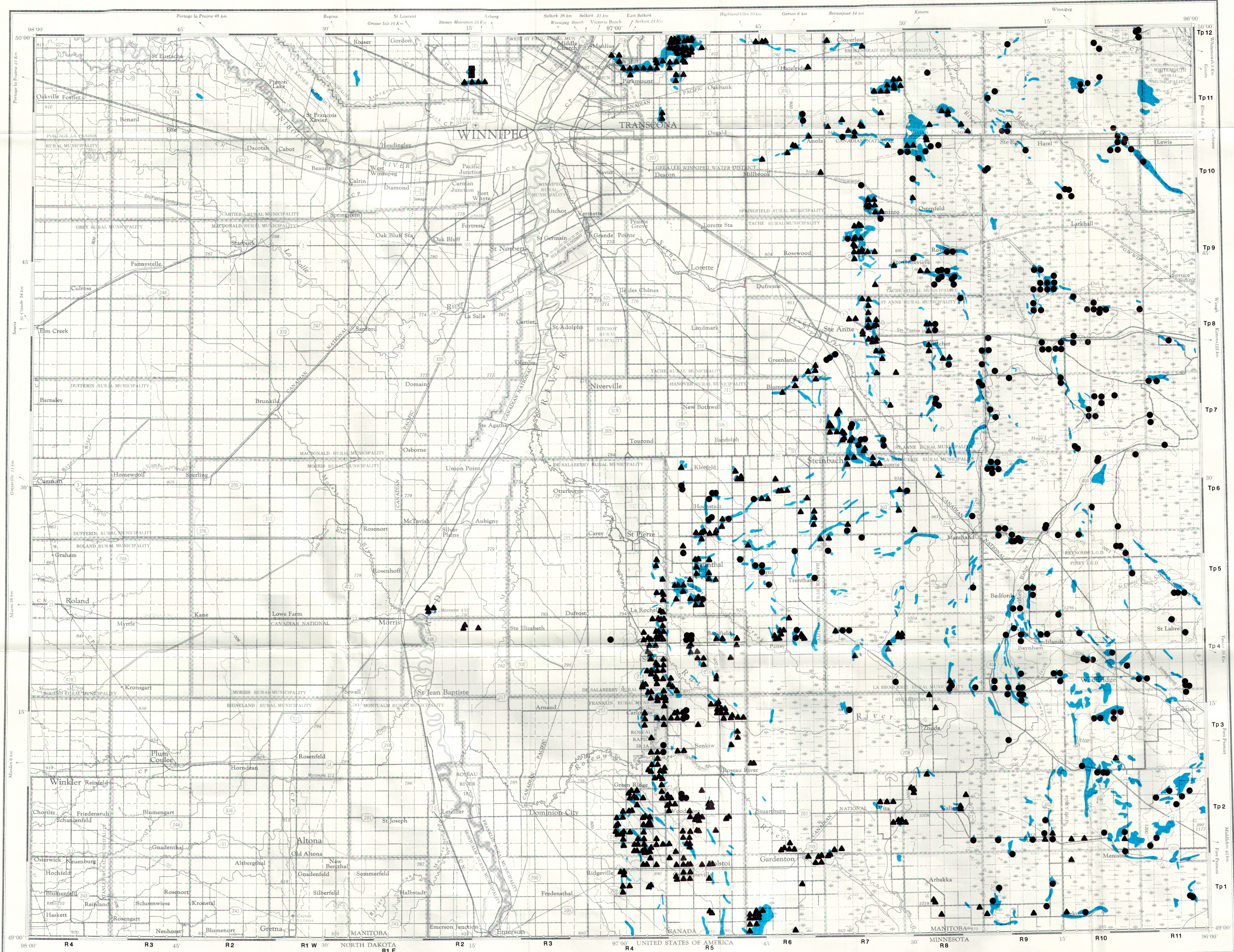
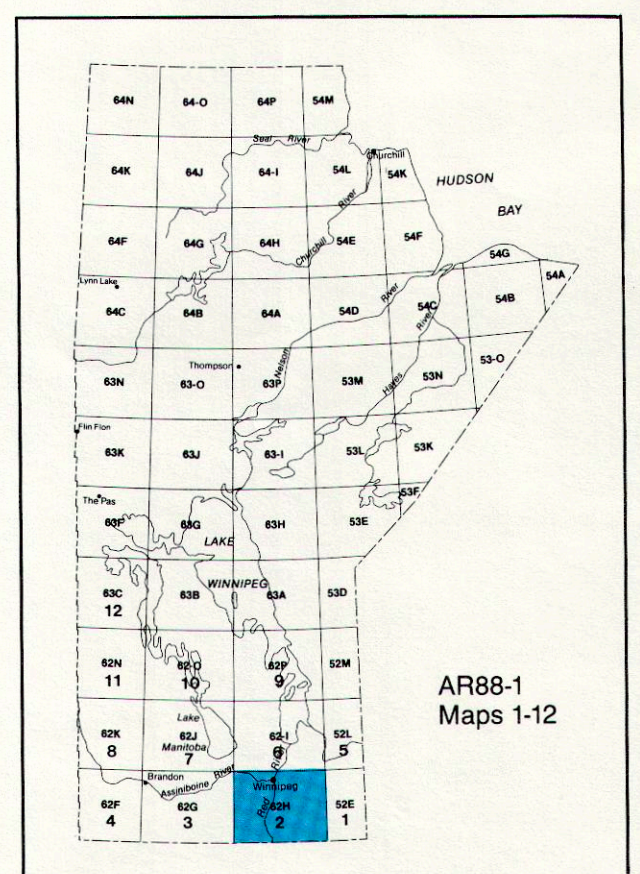
-  AGGREGATE DEPOSIT
-  GRAVEL PIT — PRIVATE SAND AND GRAVEL
-  GRAVEL PIT — CROWN SAND AND GRAVEL
-  BEDROCK QUARRY — CROWN/PRIVATE



SOURCES OF INFORMATION

- 1 Ringrose, S., et al, 1977, Quaternary Geology of the Winnipeg Region, Manitoba Energy and Mines, Preliminary Maps WPG-1, WPG-2, WPG-3, WPG-4, WPG-5, WPG-7, WPG-8 and WPG-9, 1:50000.
- 2 Ehrlich, E., et al, 1953, Reconnaissance Soil Survey of Winnipeg and Morris Map Sheet Areas, Manitoba Soil Survey, Manitoba Department of Agriculture, 1:125 720.
- 3 Ringrose, S. and Milychuk, M., 1978, Quaternary Geology of the Portage-Winkler Area, Manitoba Energy and Mines, Preliminary Map 1978 PW-5, 1:50000.
- 4 Matile, G., 1982, Aggregate Resources in La Broquerie Municipality Recommended Planning Status, Manitoba Energy and Mines, Unpublished, 1:50000.
- 5 Matile, G. and Conley, G., 1980, Quaternary Geology and Sand and Gravel Resources of the Rural Municipality of Hanover, Manitoba Energy and Mines, Municipality Map AR80-4, 1:50000.
- 6 Matile, G., In Progress, Surficial Geology and Aggregate Resource Inventory of the Local Government District of Reynolds, Manitoba Energy and Mines, Aggregate Report, 1:50000.
- 7 Matile, G. and Conley, G., 1980, Quaternary Geology and Sand and Gravel Resources of the Rural Municipality of Ste. Anne, Manitoba Energy and Mines, Municipality Map AR80-3, 1:50000.
- 8 Matile, G. and Conley, G., 1980, Quaternary Geology and Sand and Gravel Resources of the Rural Municipality of Tache, Manitoba Energy and Mines, Municipality Map AR80-2, 1:50000.
- 9 Young, R. V., 1985, Surficial Geology and Aggregate Resource Inventory of the Rural Municipality of Whitemouth, Manitoba Energy and Mines, Aggregate Report AR84-1, 1:50000.
- 10 Matile, G. and Conley, G., 1980, Quaternary Geology and Sand and Gravel Resources of the Rural Municipality of Springfield, Manitoba Energy and Mines, Municipality Map AR80-1, 1:50000.
- 11 Young, R. V., 1982, Aggregate Resource Inventory of the Rural Municipality of Brokenhead, Manitoba Energy and Mines, Open File Report OF82-5, 1:50000.
- 12 Matile, G., 1984, Quaternary Geology Map of the Birds Hill Area, Manitoba Energy and Mines, Geological Map AR84-5, 1:20000.
- 13 Mitchell, P., 1982, Surficial Geology of the Delta Marsh Area, Manitoba Energy and Mines, Preliminary Map 1982 DM-2, 1:50000.
- 14 Manitoba Department of Highways and Transportation, Aggregate Resource Inventory, Block Files 7-10, 19-22 and 31-34.
- 15 Manitoba Energy and Mines, Mining Recording Office, Quarry Mineral Disposition Files, Twp 1-12 and Rges 4W-1E.

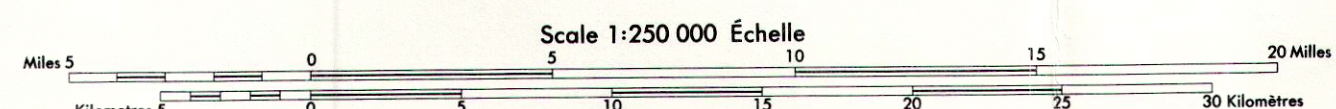
**AGGREGATE RESOURCES
COMPILATION MAP SERIES
MAP AR88-1-2
WINNIPEG
NTS 62H**



This map is a compilation of all known aggregate deposits, gravel pits and bedrock quarries in the area. The deposits include sand, sand and gravel and gravel. No distinction has been made based on the quality of the deposits. Where the aggregate deposit is small or a local feature, only the pit symbol has been shown. Where several pits are located within a small area, a single symbol has been used.

The information is based on aggregate reports, preliminary maps, surficial geology reports, Manitoba Department of Highways and Transportation aggregate resource inventories and Manitoba Energy and Mines quarry mineral disposition files. Mineral ownership data was compiled from the above data sources and Crown Lands Branch. No distinction has been made based on the mineral ownership of the bedrock quarries. This map is not to be regarded as final interpretation of the geology and mineral ownership of the area. References are included for users wishing to verify critical information.

Reasonable effort has been made to ensure the accuracy of the information presented on this map. However, Manitoba Energy and Mines and UMA Engineering Ltd. assume no liability for any errors that may occur. Additional information concerning the aggregate deposits, gravel pits or bedrock quarries may be obtained from: Manitoba Energy and Mines, Aggregate Resource Section, 555-330 Graham Avenue, Winnipeg, Manitoba, Canada, R3C 4E3.



Compilation and Cartography by: UMA Engineering Limited.

Suggested reference to this publication:

Manitoba Energy and Mines, 1988; Aggregate Resources Compilation Map Series, Map AR88-1-2, Winnipeg, NTS 62H, 1:250000.

A contribution by Manitoba Energy and Mines, Mines Branch, to programming under the Canada-Manitoba Mineral Development Agreement (MDA), a subsidiary agreement of the Economic and Regional Development Agreement (ERDA).

Base map produced by the Surveys and Mapping Branch, 1977, Department of Energy, Mines and Resources.