

MAP, BOUNDARY, AND SETBACK REQUIREMENTS FOR QUARRY LEASE, CASUAL QUARRY PERMIT, AND PRIVATE QUARRY REGISTRATION

Authority:

- The Mines and Minerals Act C.C.S.M.c. M162
 - s. 162(1), 197(1)
- Quarry Minerals Regulation, 1992, M.R. 65/92
 - s.11, 12, 39, 40, 43
- Railway Safety Act, R.S.C., 1985, c. 32 (4th Supp.) (Government of Canada)
- Mining Near Lines of Railways Regulations SOR/91-104 (Government of Canada)
 - s.3

Purpose: To provide standards for submitting a plan or map required for quarry lease, casual quarry permit, and private quarry registration.

Definitions:

Consolidated Quarry: This type of quarry involves extraction of hard rock that requires blasting and heavy machinery operation.

Unconsolidated Quarry: This type of quarry involves extraction of loose materials such as sand and gravel near the surface, usually extracted using simpler techniques.

See Figure 1 for visual explanation of subsection 43(2) of the Quarry Minerals Regulation, 1992 (M.R. 65/92) regarding setbacks.

$$D \geq 4\text{meters} + 3 \times d$$

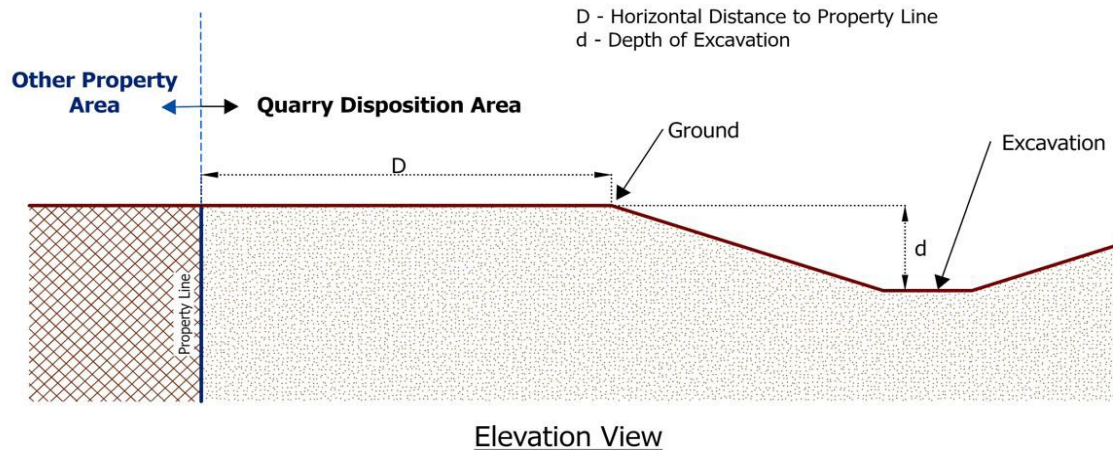


Figure 1 - Relation of Horizontal Distance of quarry boundary to Property line and Depth of Excavation

Policy Statement: All quarry leases and casual quarry permits require maps and private quarry registrations are recommended to have maps prior to starting operations on the site pursuant to this policy. The following features should be included in the maps:

Note - Attached maps are provided for illustrative purposes only and should be used as a guideline. Other forms of map with all required information may be acceptable. Refer to Figure 2 on Page 5 of 8 for the overall map including all relevant features. To provide clarity, the overall map is subdivided into three sections:

- Natural Features Map (see Figure 3 on page 6 of 8)
- Setbacks Map (see Figure 4 on page 7 of 8)
- Operations Map (see Figure 5 on page 8 of 8)

1) Natural Features (see Figure 3):

- a) **Agriculture, Forest, and Pasture:** Existing agricultural land, tree lines and grassland are marked to ensure minimal disruption to the natural landscape.
- b) **Water bodies:** Rivers, lakes, streams and any other water courses are identified to protect aquatic ecosystems.
- c) **Terrain Elevations and Contours:** Contour lines are depicted to facilitate proper planning of quarry activities.

2) Setbacks (see Figure 4):

Table 1 - Setbacks

Setback Types*	Distance
(a) Stockpile	8m to property line
(b) Provincial Trunk Highway / Provincial Road	150m
(c) Railway	50m (within the space enclosed by a vertical plane located 50m from each side of a line of railway and measured horizontally at right angles to the nearest rail).
(d) Residence	150m for Unconsolidated Quarry
	400m for Consolidated Quarry
(e) Property Line	4m for Unconsolidated Quarry
	15m for Consolidated Quarry
(f) Waterbody	50m
(g) Pipeline	50m

*Note:

- a) **Stockpile Setback:** the map depicts setback for stockpiles to the nearest property line to prevent potential impacts on surrounding area.
- b) **Road Setback:** The map includes designated setbacks from Provincial Trunk Highway or Provincial Road, ensuring safe movement of public vehicles.
- c) **Railway Setback:** The map includes designated setbacks from railways, ensuring safe movement of trains.
- d) **Residence Setback:** The map depicts the required setbacks for consolidated and unconsolidated minerals from residential properties, ensuring that mining activities maintain a regulated distance (Refer to the definitions for consolidated and unconsolidated mineral).
- e) **Property Line Setback:** Setbacks for consolidated and unconsolidated minerals from property lines are marked to comply with regulatory requirements, protecting neighboring properties from potential impacts of quarry operations (Refer to the definitions for an explanation of property line setback requirement applying to excavation depth).
- f) **Waterbody Setback:** The required setback from any shore of a river,

lake or stream is indicated to prevent disruption to natural water courses.

- g) **Pipeline Setback:** No person shall explore for, develop or mine a mineral within 50m of a pipeline that transports oil, gas or petroleum product without first obtaining, on application, the written approval of the minister (The Mines and Minerals Act C.C.S.M.c. M162 s.162(1)).

3) Operational Features (See Figure 5) (where applicable):

- a) **Stockpile Locations:** The map shows areas for the storage of extracted materials, ensuring organized and safe operation.
- b) **Overburden and Topsoil Locations:** Areas for overburden and topsoil removal and storage are marked to facilitate proper site management.
- c) **Direction of Excavation:** The planned direction of excavation is illustrated to guide the progression of quarry activities.
- d) **Water Collection Locations:** Water collection pond is illustrated on the map, ensuring proper water management.

Director of Mines

If you have any questions, please call 204-945-1119 or email
minesquarryinspector@gov.mb.ca

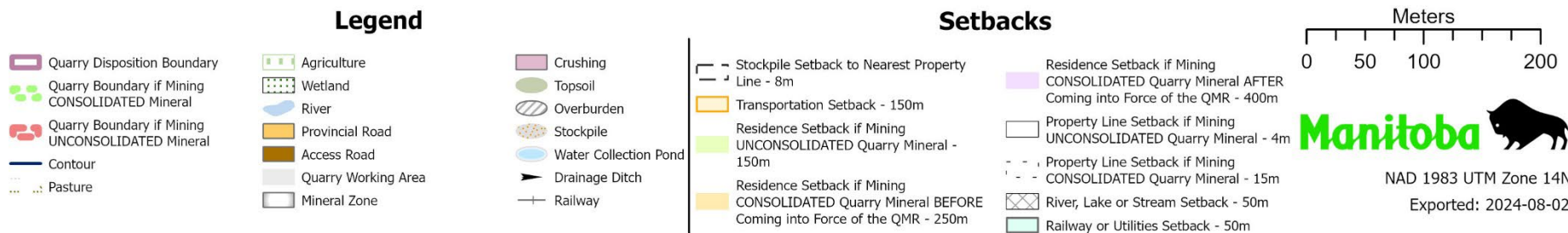
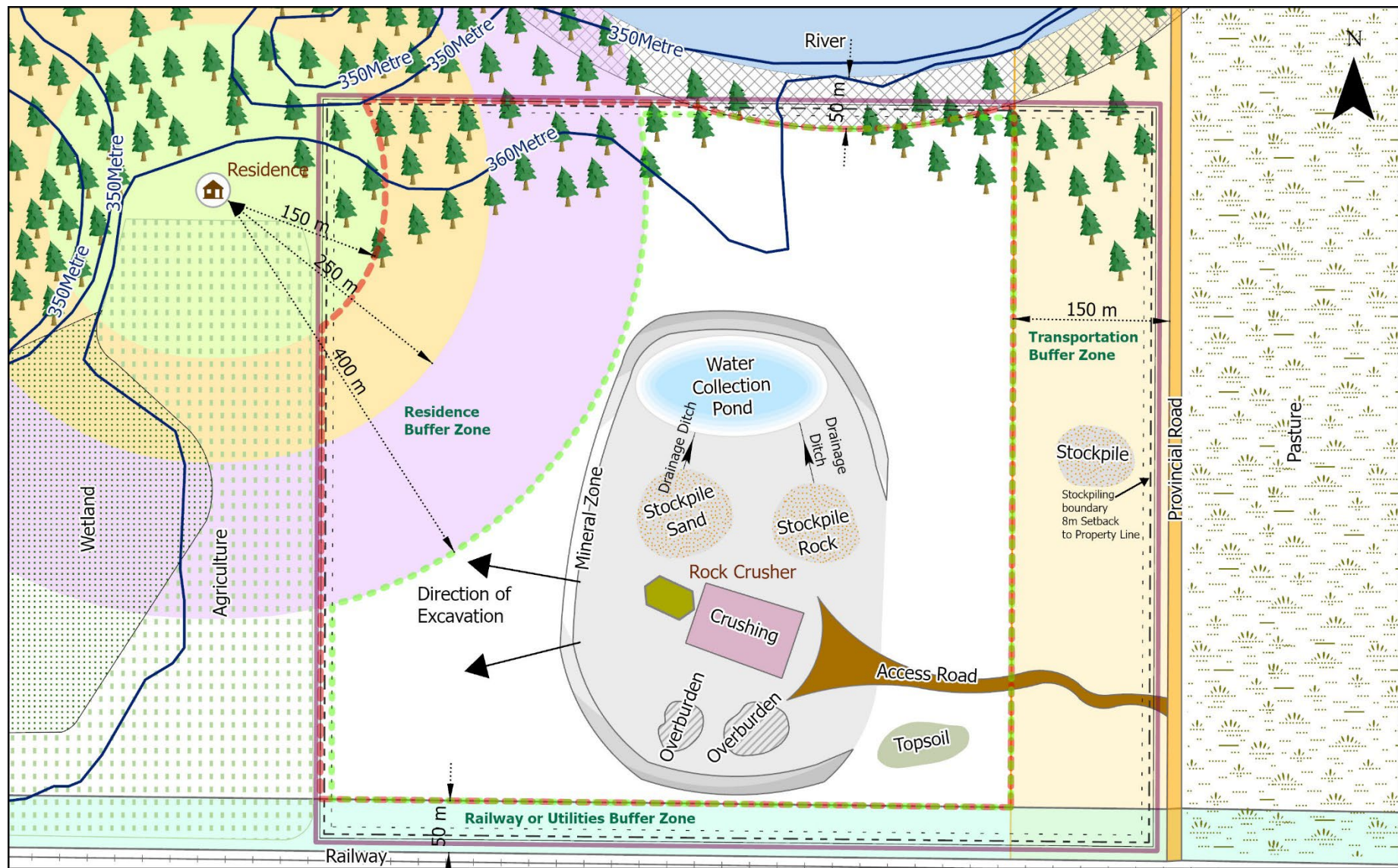
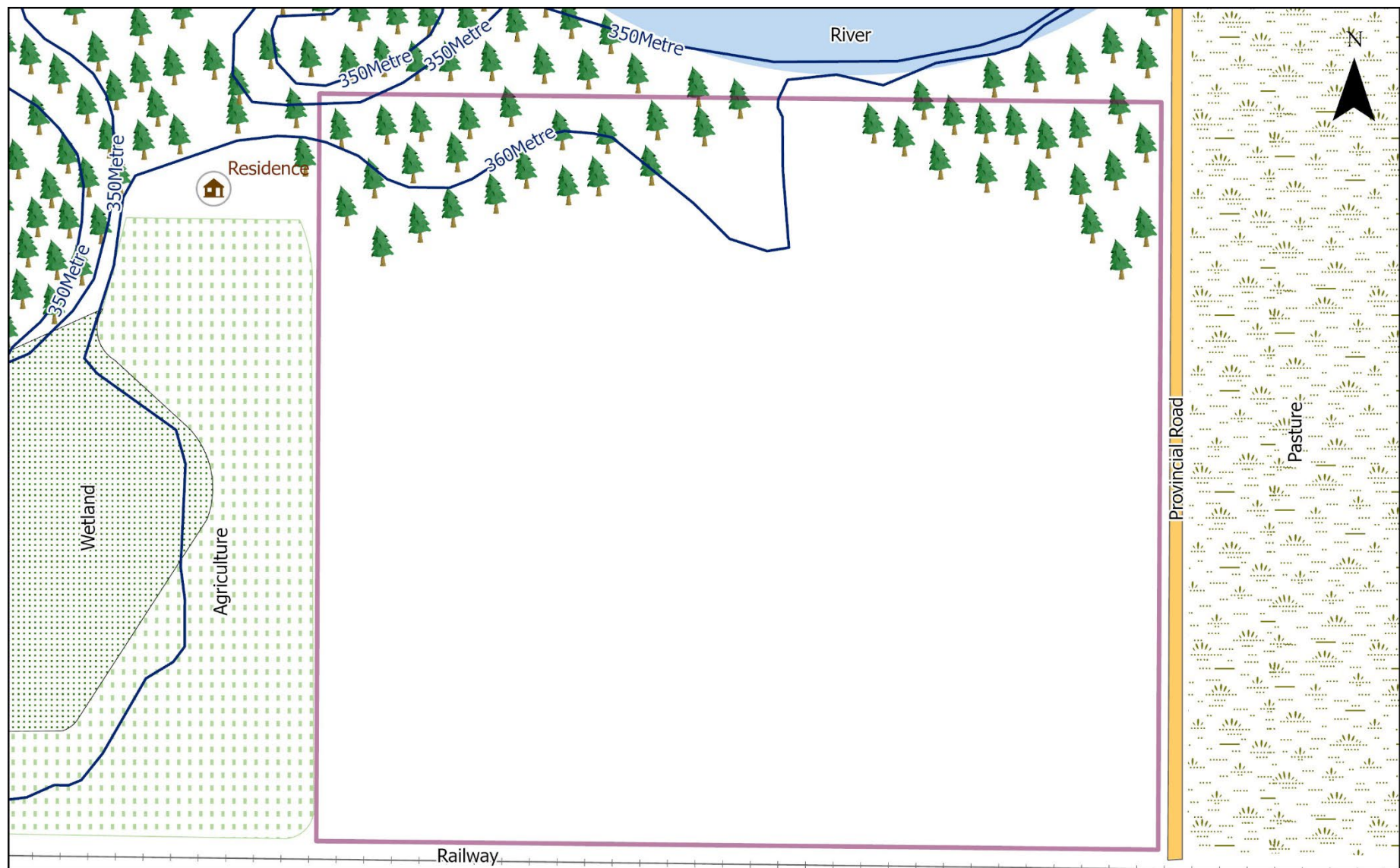
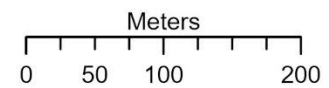


Figure 2 - Quarry Plan Map



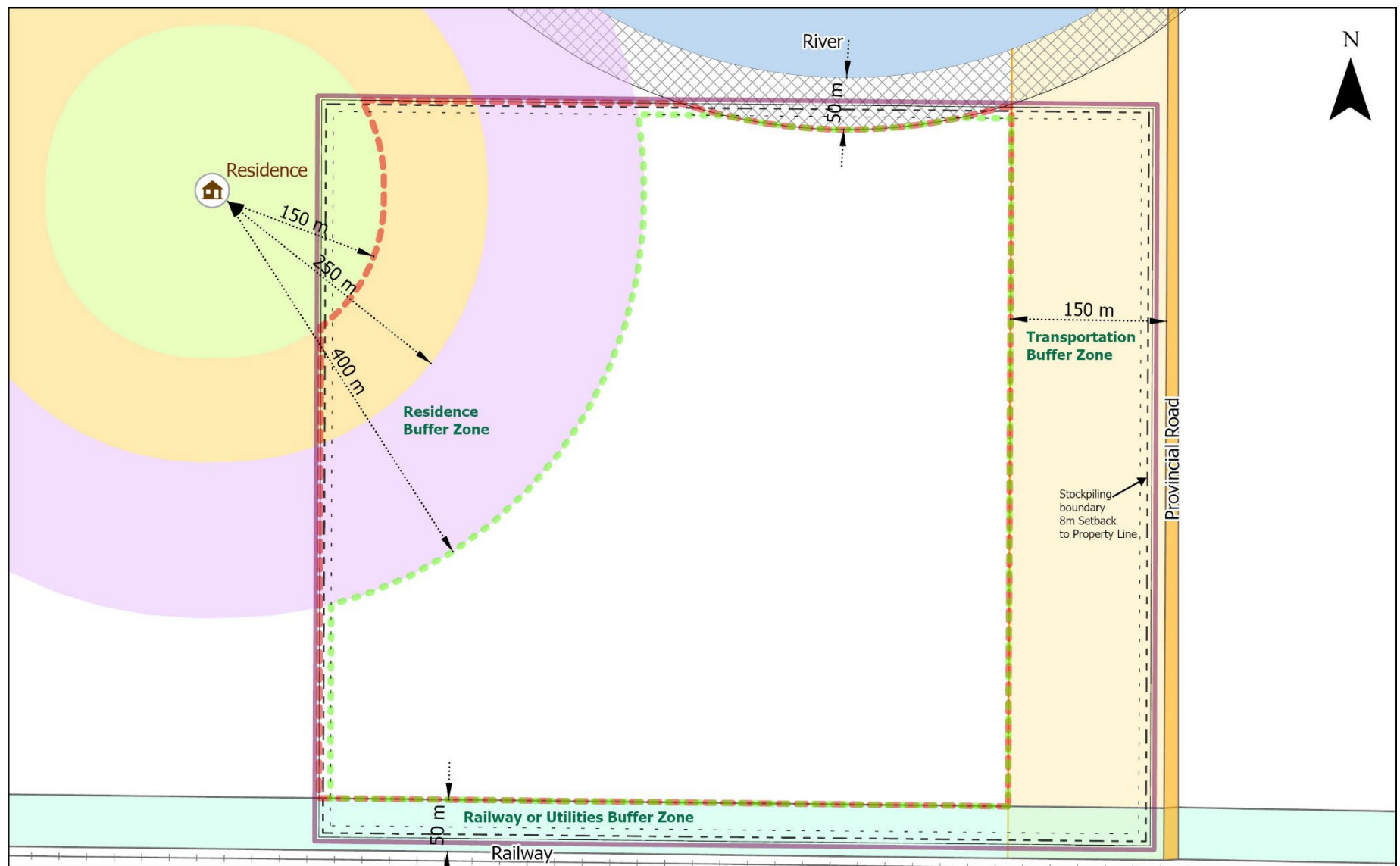
Legend

- | | |
|-----------------------------|-----------------|
| Quarry Disposition Boundary | Wetland |
| Contour | River |
| Pasture | Provincial Road |
| Agriculture | Railway |



NAD 1983 UTM Zone 14N
Exported: 2024-09-13

Figure 3 - Natural Features Map



Legend

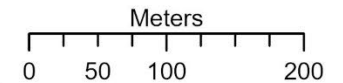
- Quarry Disposition Boundary
- Quarry Boundary if Mining CONSOLIDATED Mineral
- Quarry Boundary if Mining UNCONSOLIDATED Mineral

- River
- Provincial Road
- Railway

Setbacks

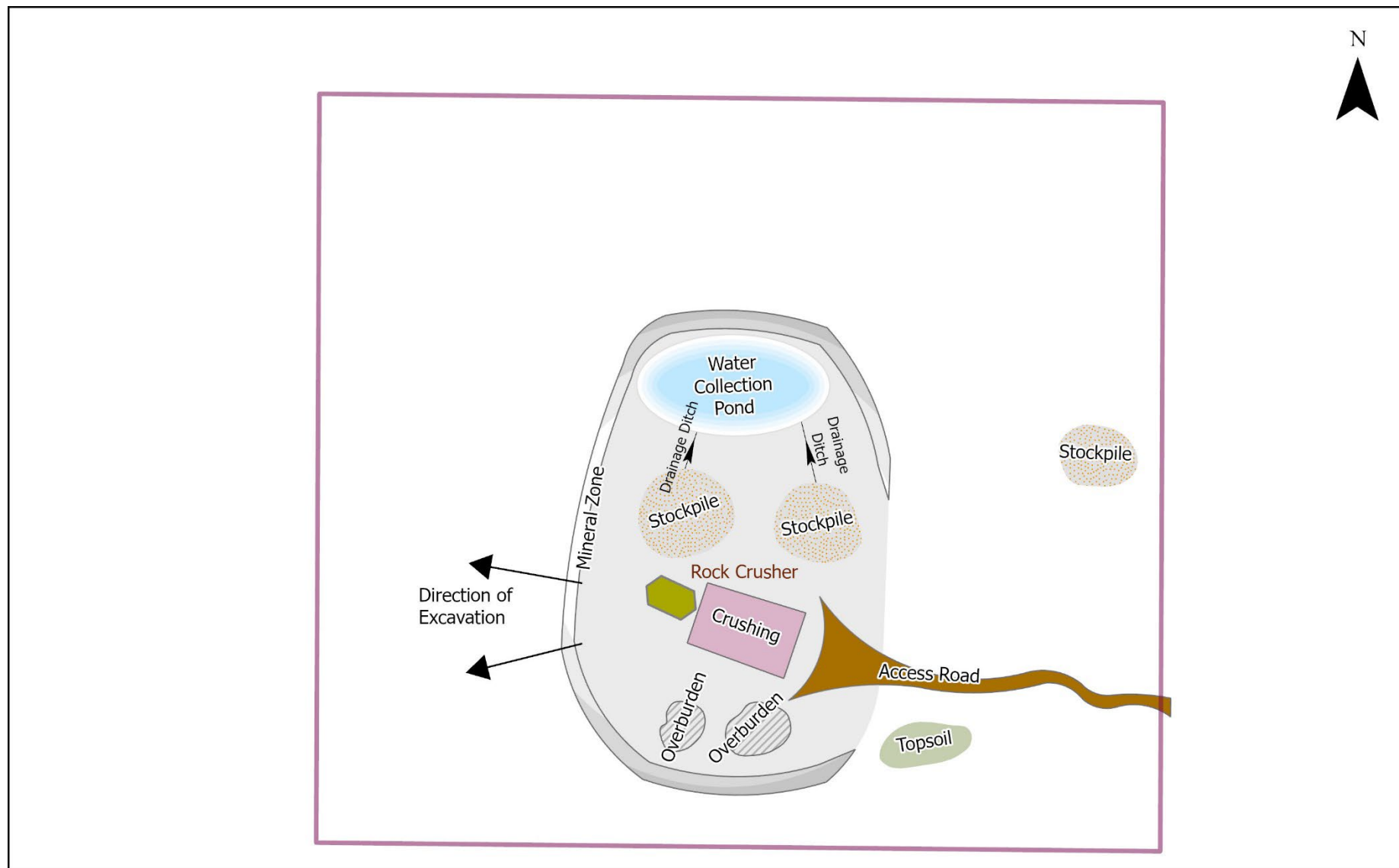
- Stockpile Setback to Nearest Property Line - 8m
- Transportation Setback - 150m
- Residence Setback if Mining UNCONSOLIDATED Quarry Mineral - 150m
- Residence Setback if Mining CONSOLIDATED Quarry Mineral BEFORE Coming into Force of the QMR - 250m

- Residence Setback if Mining CONSOLIDATED Quarry Mineral AFTER Coming into Force of the QMR - 400m
- Property Line Setback if Mining UNCONSOLIDATED Quarry Mineral - 4m
- Property Line Setback if Mining CONSOLIDATED Quarry Mineral - 15m
- River, Lake or Stream Setback - 50m
- Railway or Utilities Setback - 50m



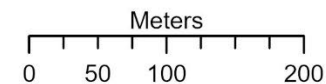
NAD 1983 UTM Zone 14N
Exported: 2024-09-13

Figure 4 - Setbacks Map



Legend

- | | |
|-----------------------------|-----------------------|
| Quarry Disposition Boundary | Topsoil |
| Access Road | Overburden |
| Quarry Working Area | Stockpile |
| Mineral Zone | Water Collection Pond |
| Crushing | Drainage Ditch |



NAD 1983 UTM Zone 14N
Exported: 2024-09-13

Figure 5 - Operations Map