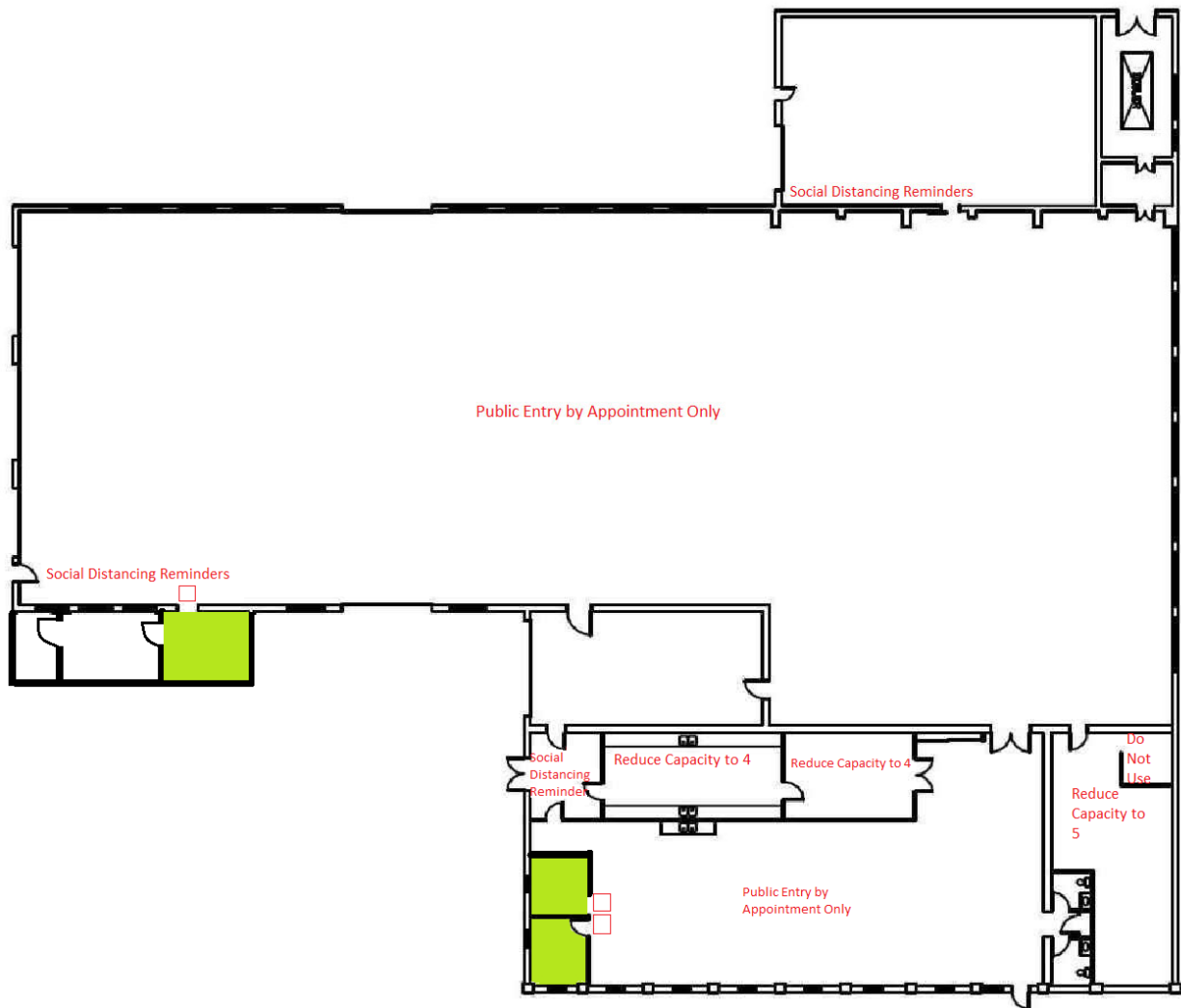


**Resource Development Division
 COVID-19 Protocol Plan for Manitoba Geological Survey Midland Sample and Core Library
 10 Midland Street, Winnipeg, Manitoba**

10 Midland Street



AREA	OPTIONS	COMMENTS
Front entrance	<p>All clients must do COVID-19 self-assessment prior to arriving for core viewing. Clients must pass the assessment before being allowed in the building. For multi-day visiting clients, the assessment must be made daily prior to arrival at the facility.</p> <p>Require clients to use hand sanitizer immediately upon entry.</p> <p>Have a post-use hand and surface sanitization requirement. Add signage on processes and expectations of clients.</p>	<p>Requires sanitizing station. Requires cleaner for use.</p>
Thin section room	<p>Mark distancing requirement (as a visual reminder).</p> <p>Have a post-use surface sanitization requirement.</p> <p>Reduce capacity to 4</p>	<p>Requires cleaner for use.</p>

Viewing area	<p>Mark distancing requirement (as a visual reminder).</p> <p>Core will be quarantined in the viewing area for 24 hours after viewing. Pinnacle services will not be used. Clients will use a single designated desk for their work. Only 4 tables will be available to use at a given time to accommodate for their quarantining.</p>	Requires cleaner for use.
Rock cutting room	<p>Post-use sanitization requirement on hard surfaces.</p> <p>Reduce capacity to 4</p>	Requires cleaner for use.
Washrooms	<p>Have regular sanitization of touch points (door knobs, handles) throughout the day.</p>	Requires cleaner for use.
Kitchen area	<p>Sink/fridge areas - limit number of users to one person at a time</p> <p>Requires regular sanitization throughout the day.</p> <p>Fridge and microwave handles to be opened with napkin only.</p>	Requires cleaner for regular cleaning.
Unoccupied work spaces	<p>Mark as “do not use”. If used, have post-use sanitization requirements.</p>	
Work space adjustments to accommodate social distancing practices	<p>Mark distancing requirement at workspace entry (as a visual reminder).</p> <p>Regular sanitization of touch points throughout the day.</p>	Requires cleaner for use.