

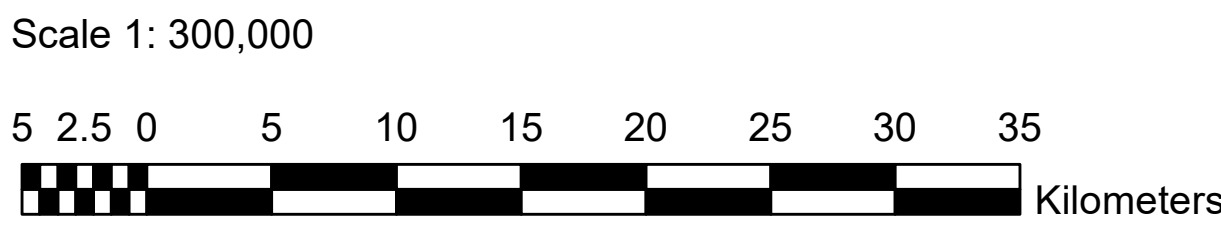
WELL STATUS INFORMATION

- |  |  |  |
|--|--|--|
| ○ Location                               | ◆ Abandoned water injection well (former producer) | ➔ Abandoned dual completion                  |
| ⊙ Standing                               | ⊙ Salt water disposal                              | ⊙ Water supply well                          |
| ● Producer                               | ● Salt water disposal (former producer)            | ⊙ Abandoned water supply well                |
| ◆ Abandoned producer                     | ◆ Abandoned salt water disposal                    | ⊙ Abandoned structure test hole              |
| ◇ Dry and abandoned                      | ◆ Abandoned salt water disposal (former producer)  | ⊙ Gas injection well                         |
| ⊙ Junked and abandoned                   | ◆ Abandoned potash                                 | ⊙ Water alternating gas injection well       |
| ⊙ Water injection well                   | ⊙ Salt solution well                               | X Horizontal or directional surface location |
| ● Water injection well (former producer) | ◆ Abandoned salt solution well                     |  |
| ⊙ Abandoned water injection well         | ➔ Dual completion                                  |  |

TOPOGRAPHICAL INFORMATION

- |                                |                                       |
|--------------------------------|---------------------------------------|
| CULTURAL FEATURES              | BOUNDARY FEATURES                     |
| —○— Provincial trunk highway   | ▭ Township /Range                     |
| —429— Provincial regional road | — Section line (surveyed, unsurveyed) |
| — Railway                      | ▭ Oil Field                           |
| ■ Town/Village                 | ▭ First Nations                       |
|                                | ▭ Protected Area                      |
|                                | ▭ Potash Withdrawal                   |

Well Location Map  
Twp 1-45, Rge 29W1 -1E1



Well Information: March 24, 2025  
Cartography by: C.Steele  
Published by: Resource Development

Not to be reproduced in any manner whatsoever without the written permission of the Director

