

00/09-25-008-29W1/0

KB: 518.4 m RR: 2006-02-11

TD: 963.0 m [TVD] FormTD: BIRDBER

Mode: Prod Fluid: Oil

TUNDRA SINCLAIR 9-25-8-29 (WPM)

< 1541.0m to next well >

00/09-30-008-28W1/0

KB: 511.3 m RR: 2006-09-09

TD: 945.0 m [TVD] FormTD: BIRDBER

Mode: Prod Fluid: Oil

TUNDRA SINCLAIR PROV. 9-30-8-28 (WPM)

< 2096.4m to next well >

00/12-28-008-28W1/0

KB: 498.0 m RR: 2008-02-05

TD: 919.0 m [TVD] FormTD: BIRDBER

Mode: Prod Fluid: Oil

TUNDRA ET AL SINCLAIR 12-28-8-28 (WPM)

< 1701.2m to next well >

00/05-27-008-28W1/0

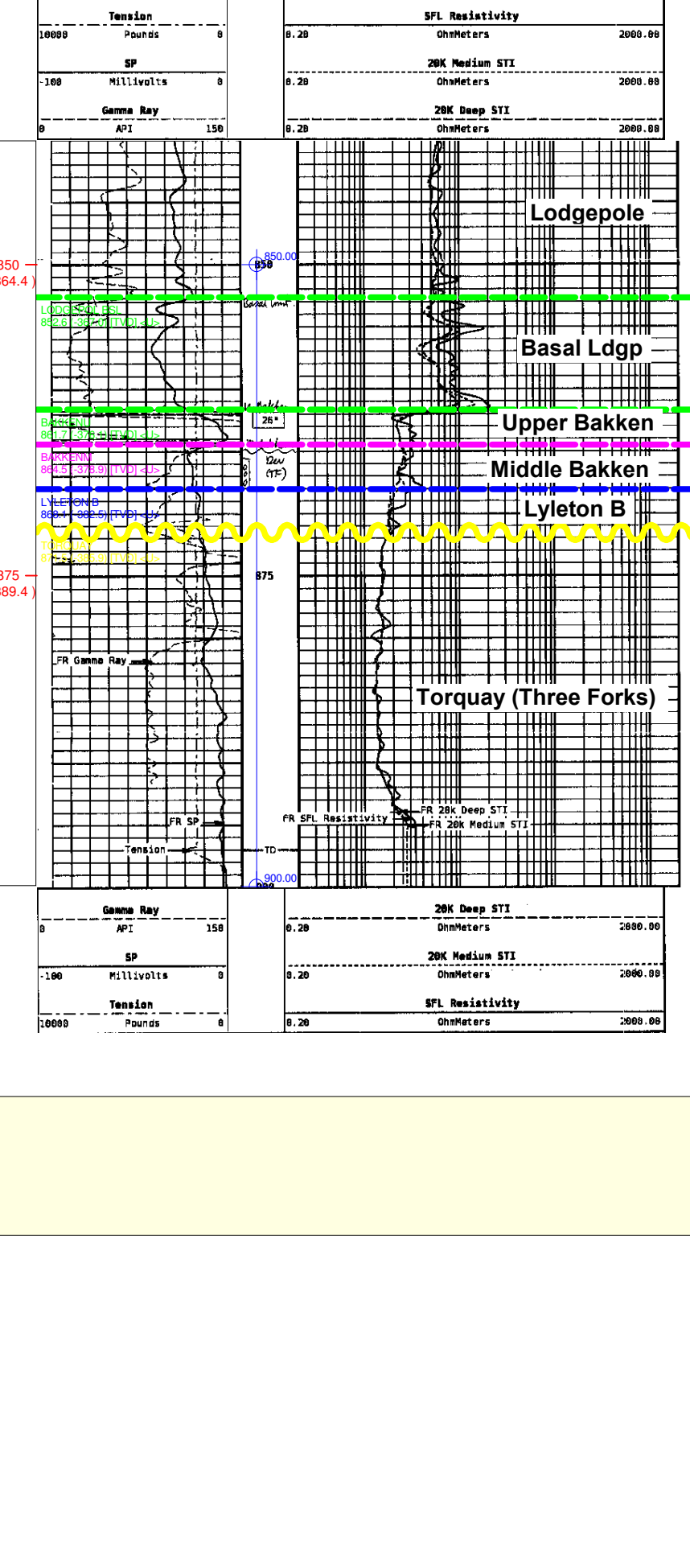
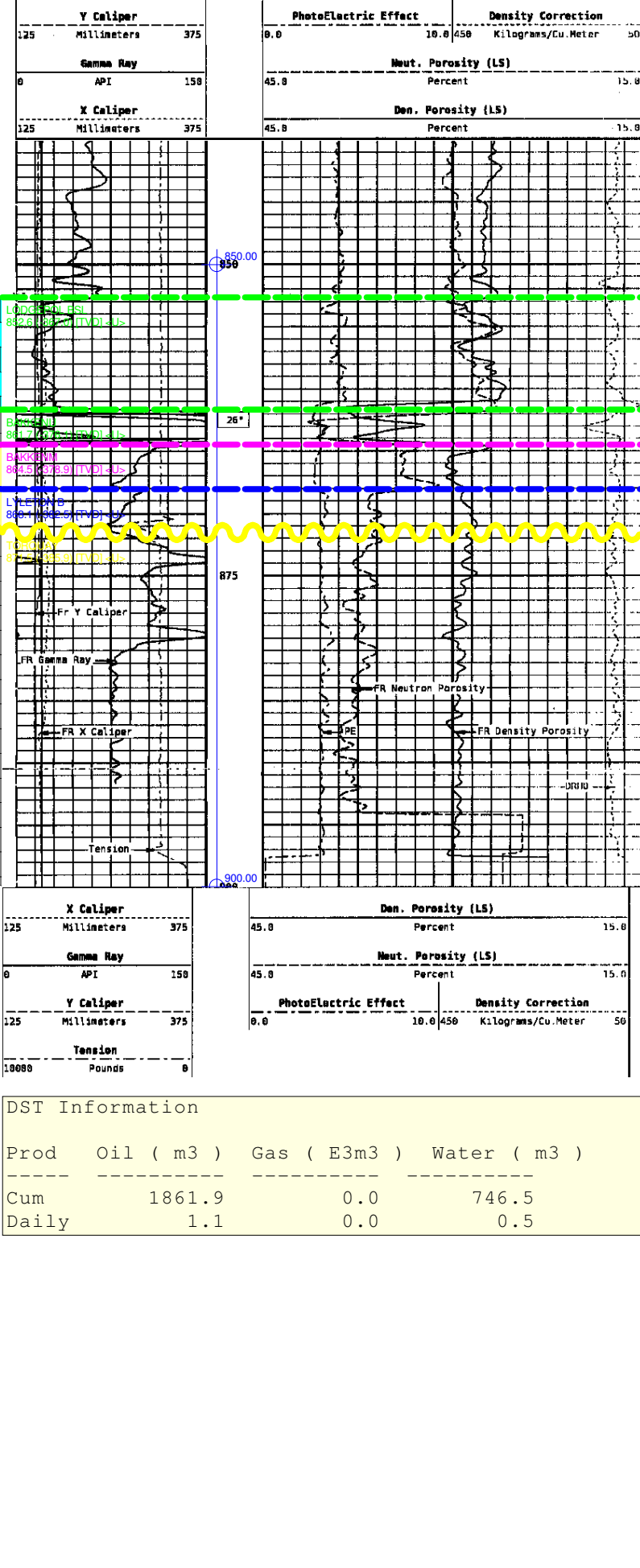
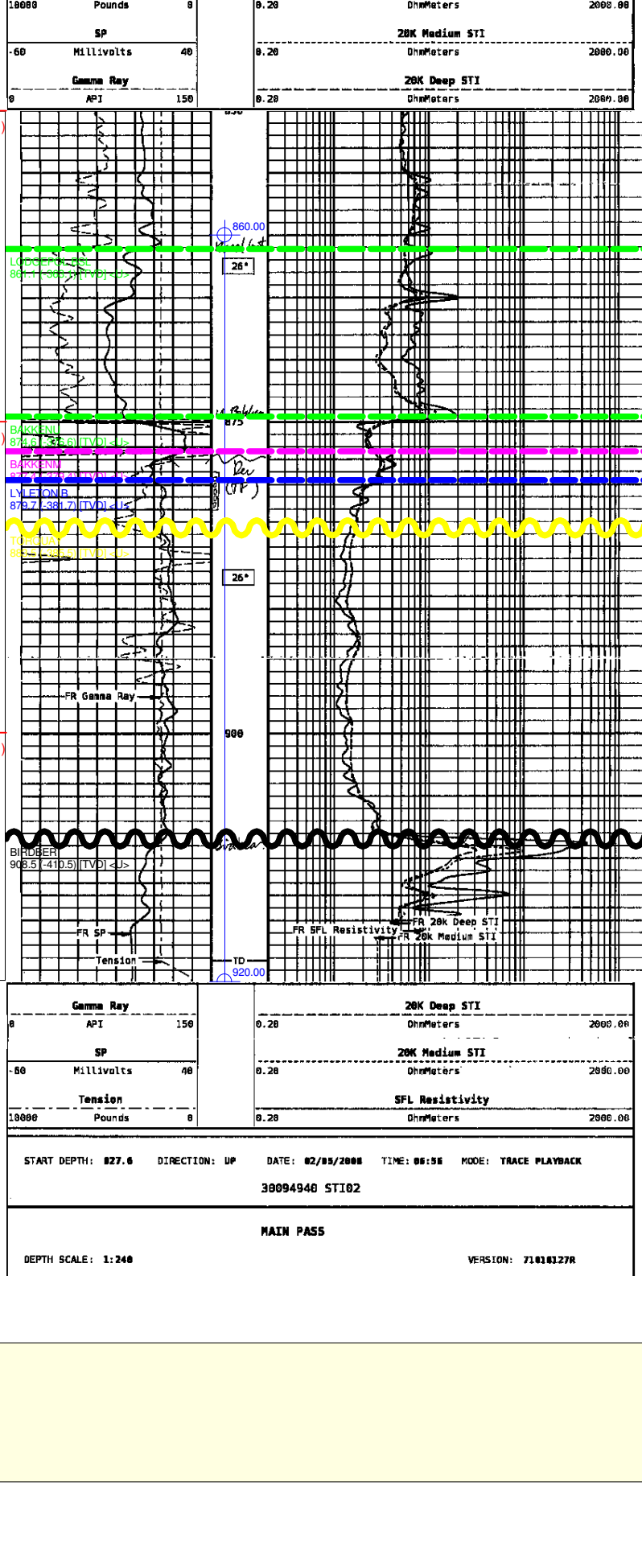
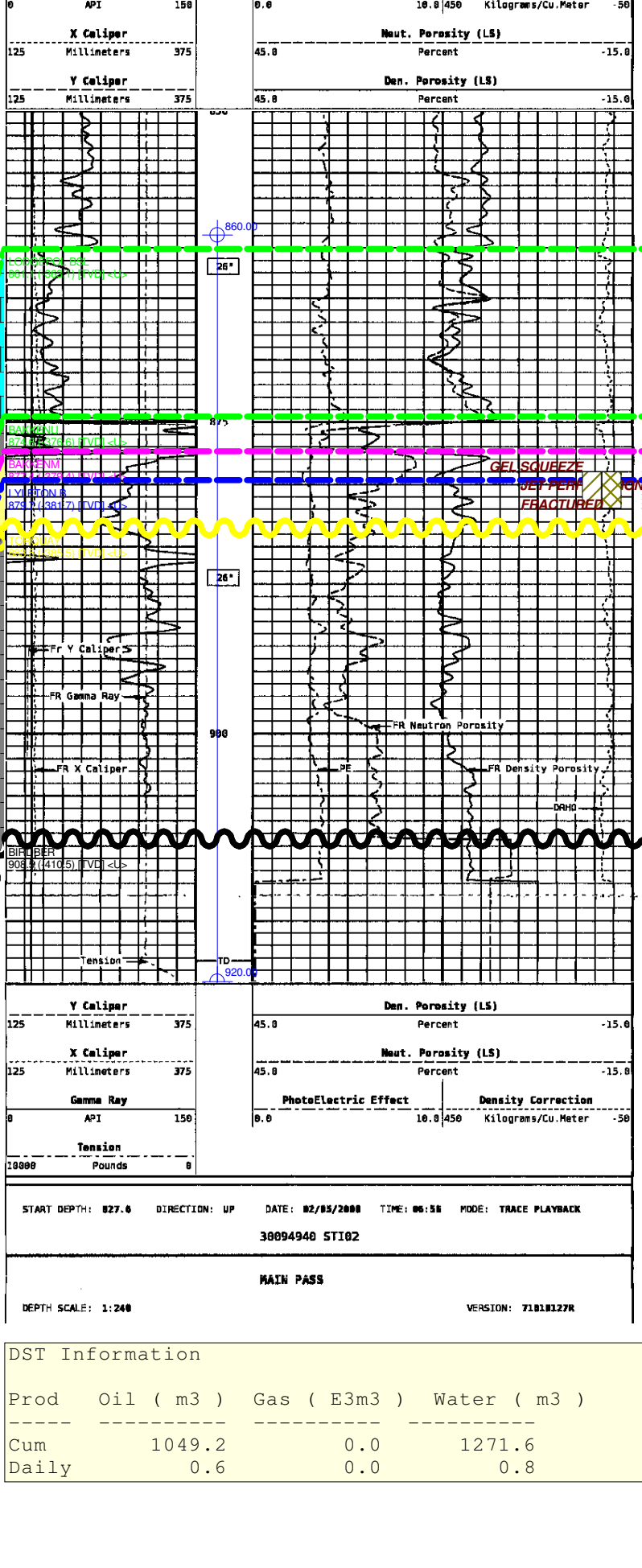
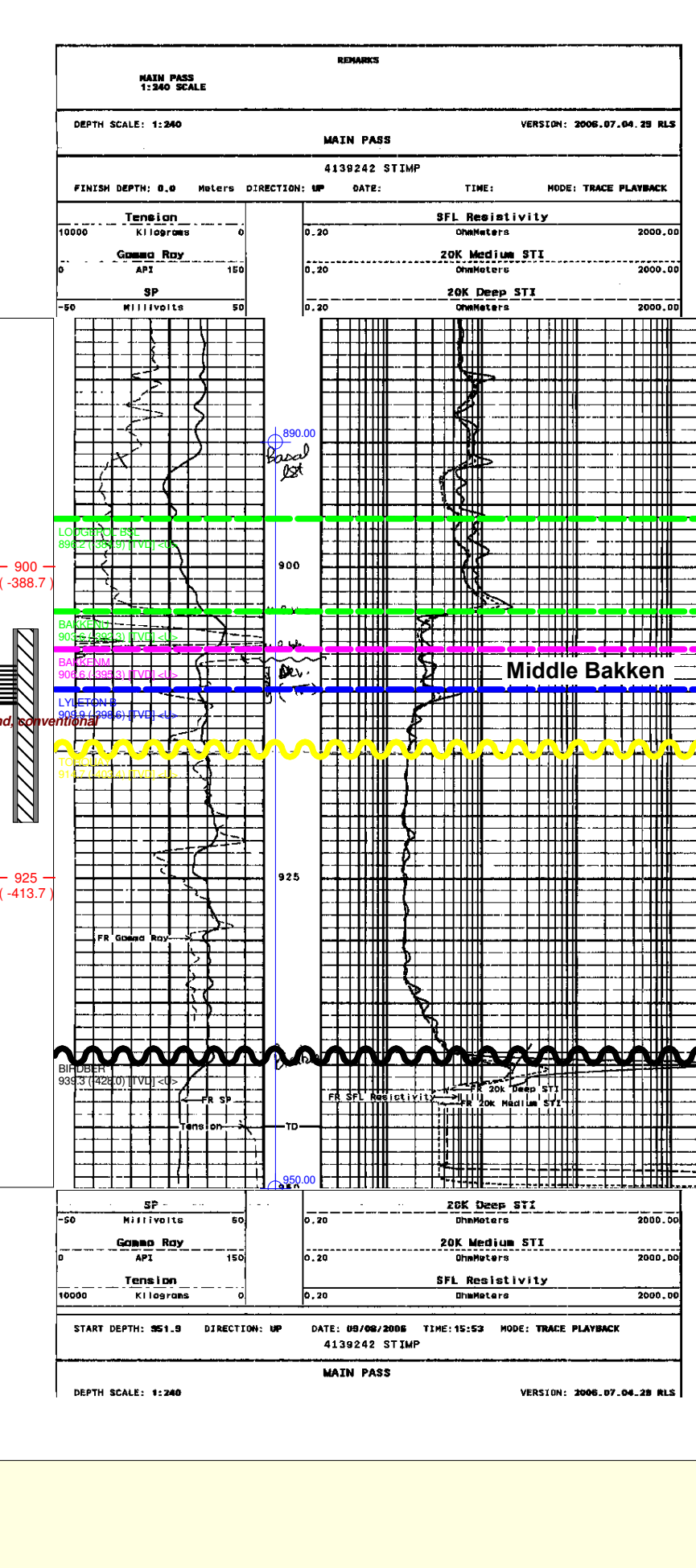
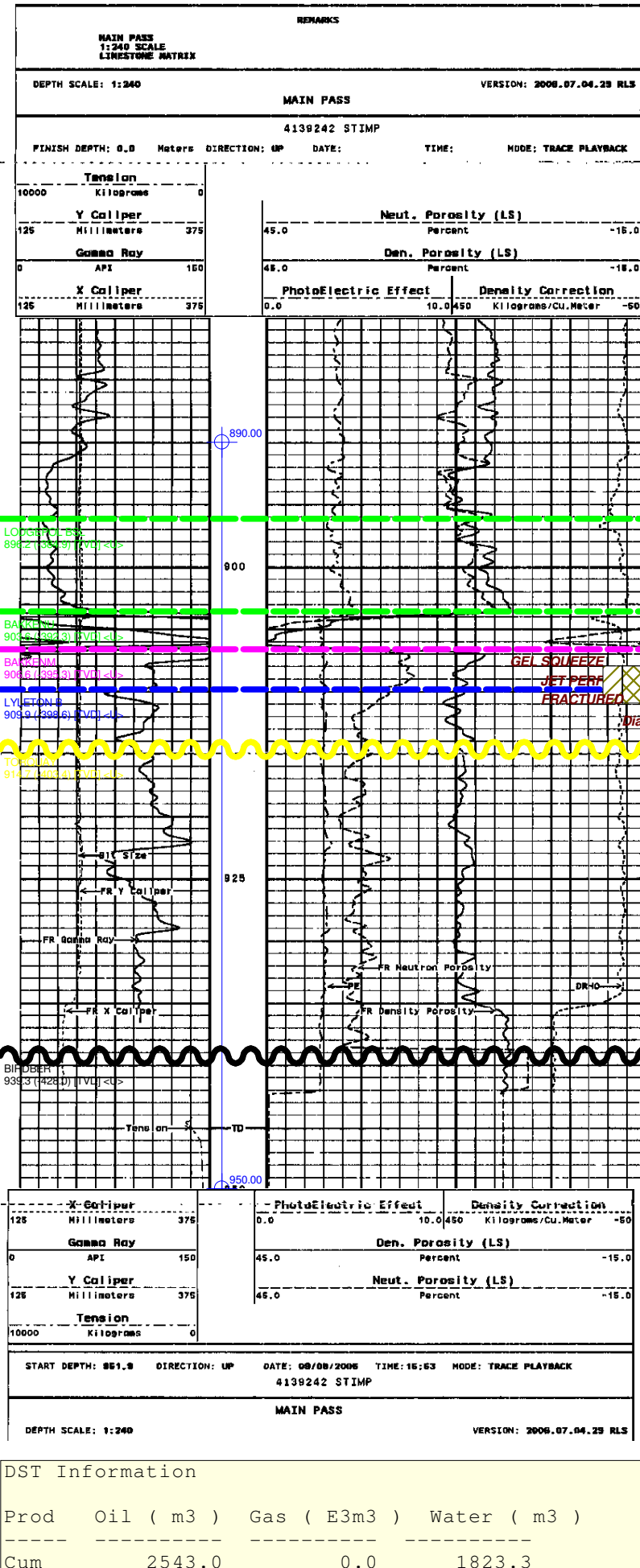
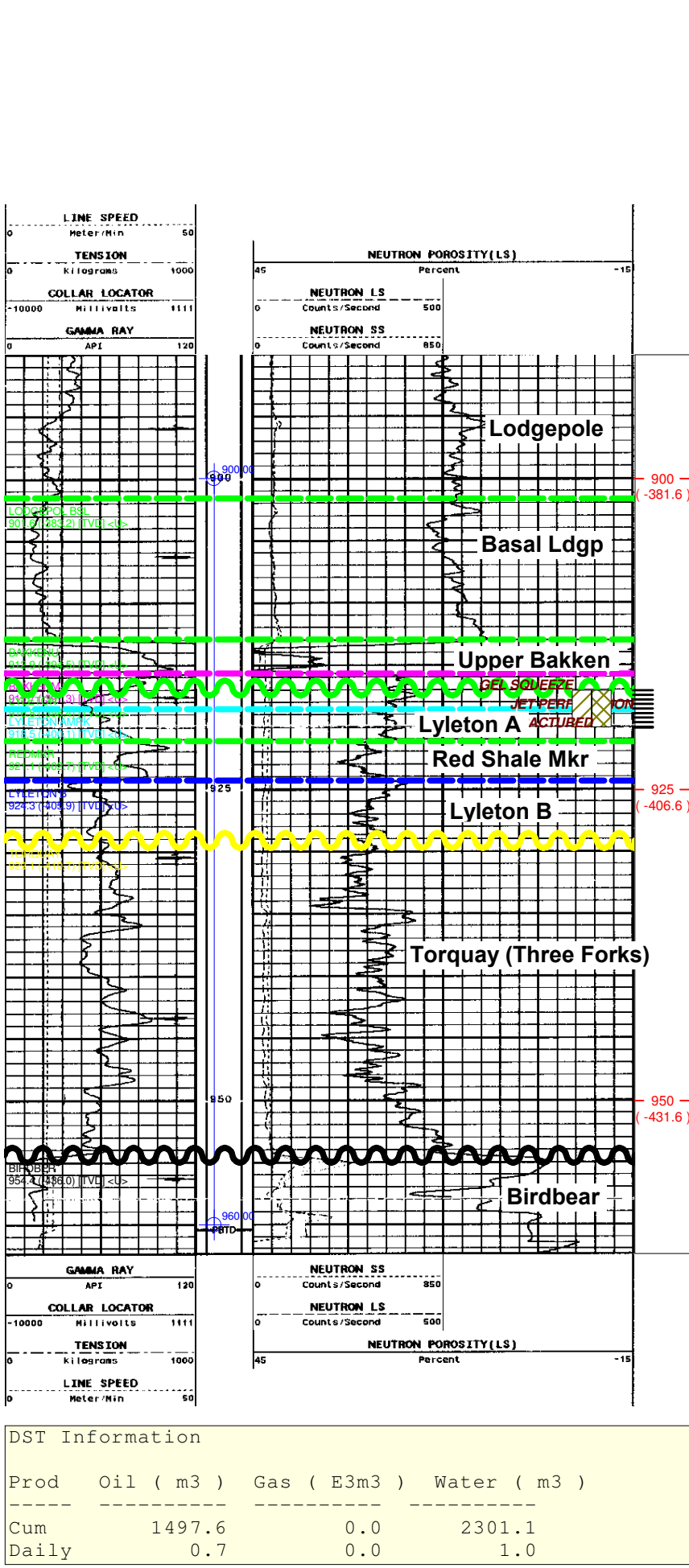
KB: 485.6 m RR: 2008-02-10

TD: 898.0 m [TVD] FormTD: TORQUAY

Mode: Prod Fluid: Oil

CORVAL DALY SINCLAIR COM 5-27-8-28 (WPM)

< 1701.2m to previous well >



Legend

●

Oil

■

Red

■

Anhydrite

■

Siltstone

■

Dolomite

■

Limestone

■

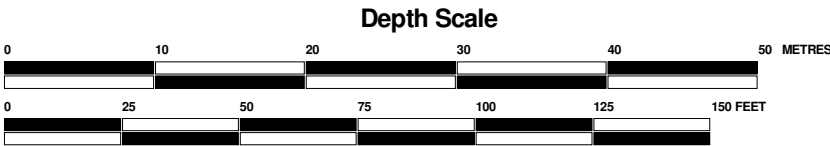
Shale

■

Sandstone

■

Breccia



Tundra Oil and Gas Limited

Proposed Ewart Unit 3
Sec 29-008-28W1M
Appendix 2

Produced by :
AccuLogs Cross Section
Version 7.11.0.43505
Start Formation: 20m. above BAKKENU
End Formation: 5m. below Total Depth
Cross Section Name: DALYGG
Copyright 2011, IHS

Author: bwlarsen
Modified On: Thursday, February 14, 2013 01:39PM
Printed On: Thursday, February 14, 2013 01:40PM
Start Formation: 20m. above BAKKENU
End Formation: 5m. below Total Depth
Cross Section Name: DALYGG

m:\AccuLogs\sect\DALYGG.vsc
Projection: None. Fixed spacing: 1.00 inch

Page 1 of 1 (Row 1 Col A) Copyright 2011, IHS

[AccuLogs Cross Section, v7.11.0.43505] Feb 14, 2013 13:40:06
Datum: NAD06