

TORC OIL & GAS LTD.

EAST MANSON UNIT #7

ENHANCED OIL RECOVERY (EOR) ANNUAL REPORT

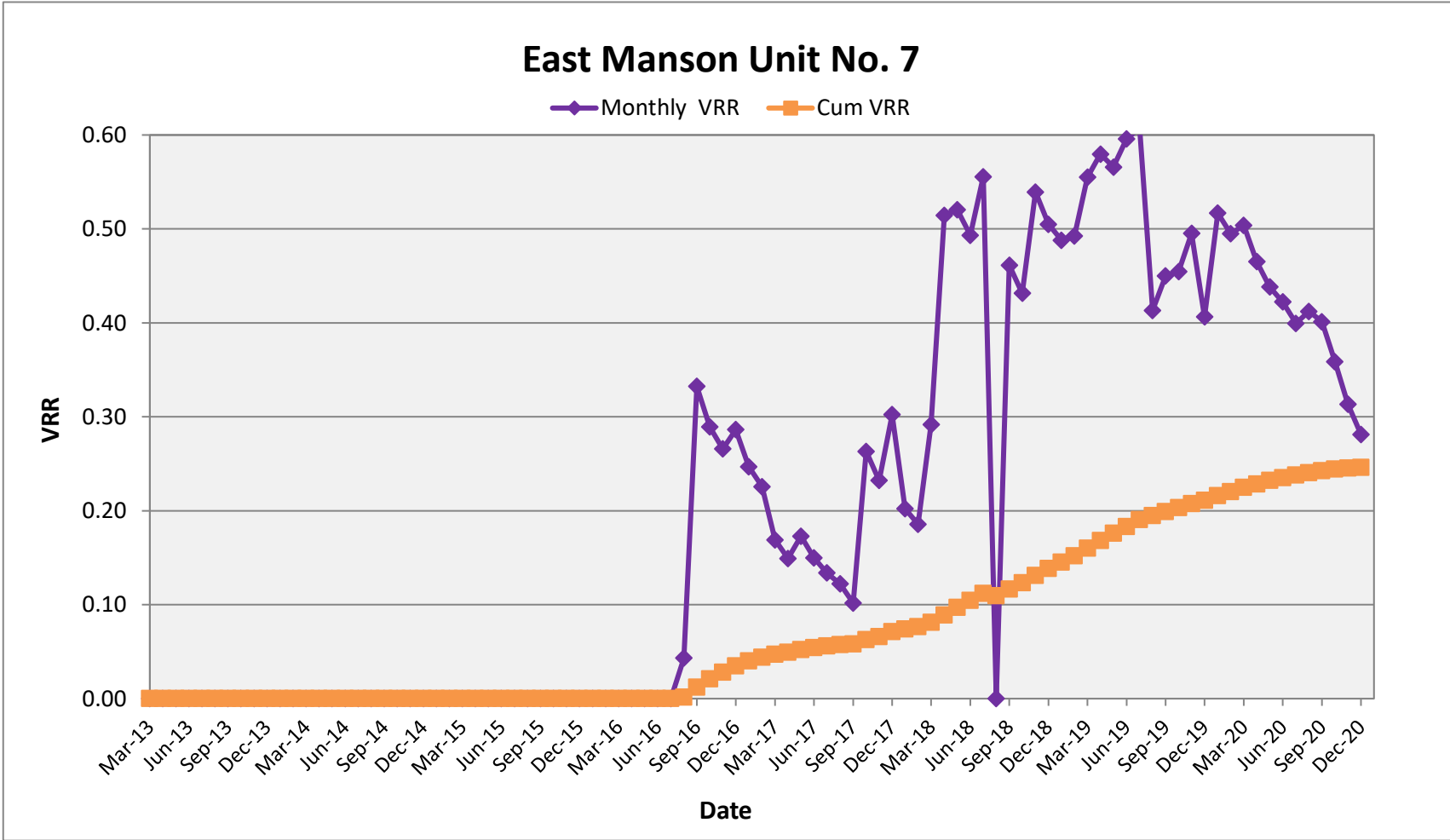
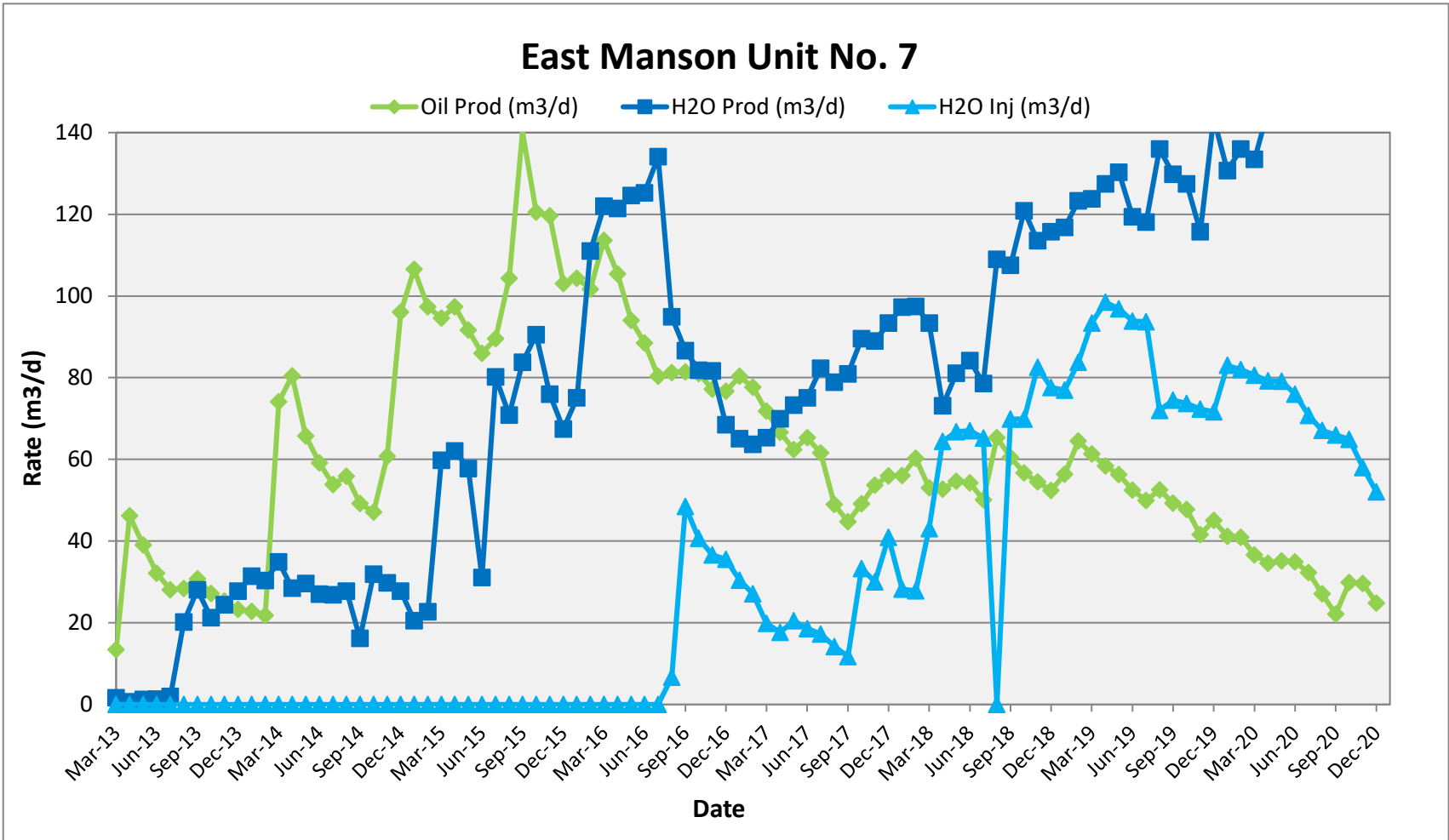
Discussion:

East Manson Unit #7 encountered a challenging year from a waterflood performance perspective. Injection rates have declined steeply and as a direct result, oil rates have dropped off as well.

In 2020, TORC focused efforts on cleaning out the laterals of both injecting and producing wells. Although significant formation fines and scale were encountered, production rates did not seem to respond as well as other units.

With waterflood performance deteriorating significantly, TORC will be focusing a lot of attention on this unit to diagnose and rectify the issues in this unit.

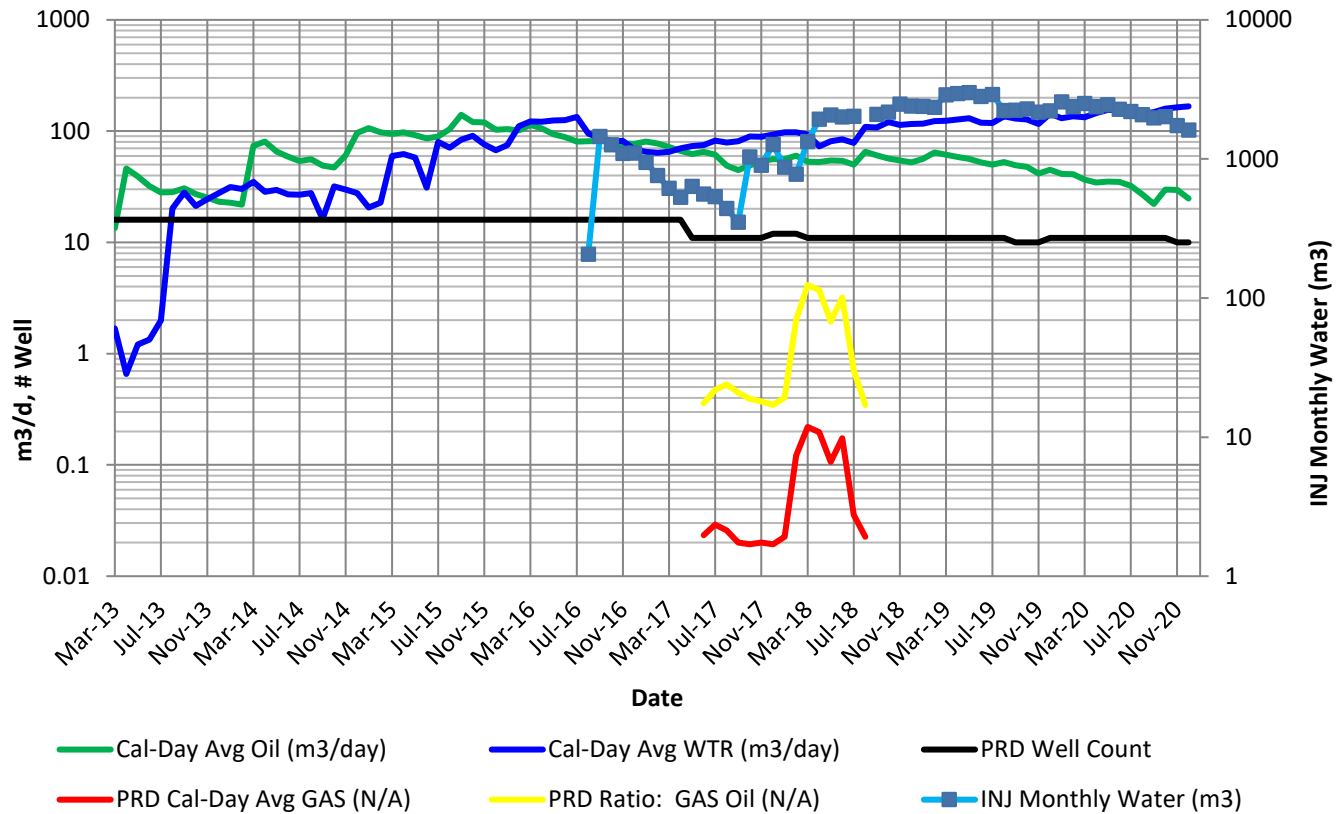
	Date	Oil Prod (m3/d)	Gas Prod (e3m3/d)	H2O Prod (m3/d)	H2O Inj (m3/d)	Monthly VRR	Cum VRR	Cum PRD Oil (m3)	Cum PRD Gas (e3m3)	Cum PRD Water (m3)	Cum INJ Water (m3)
EMU No.7	Dec-2020	25	-	167	52	0.28	0.246	175,053	32	238,264	90,484



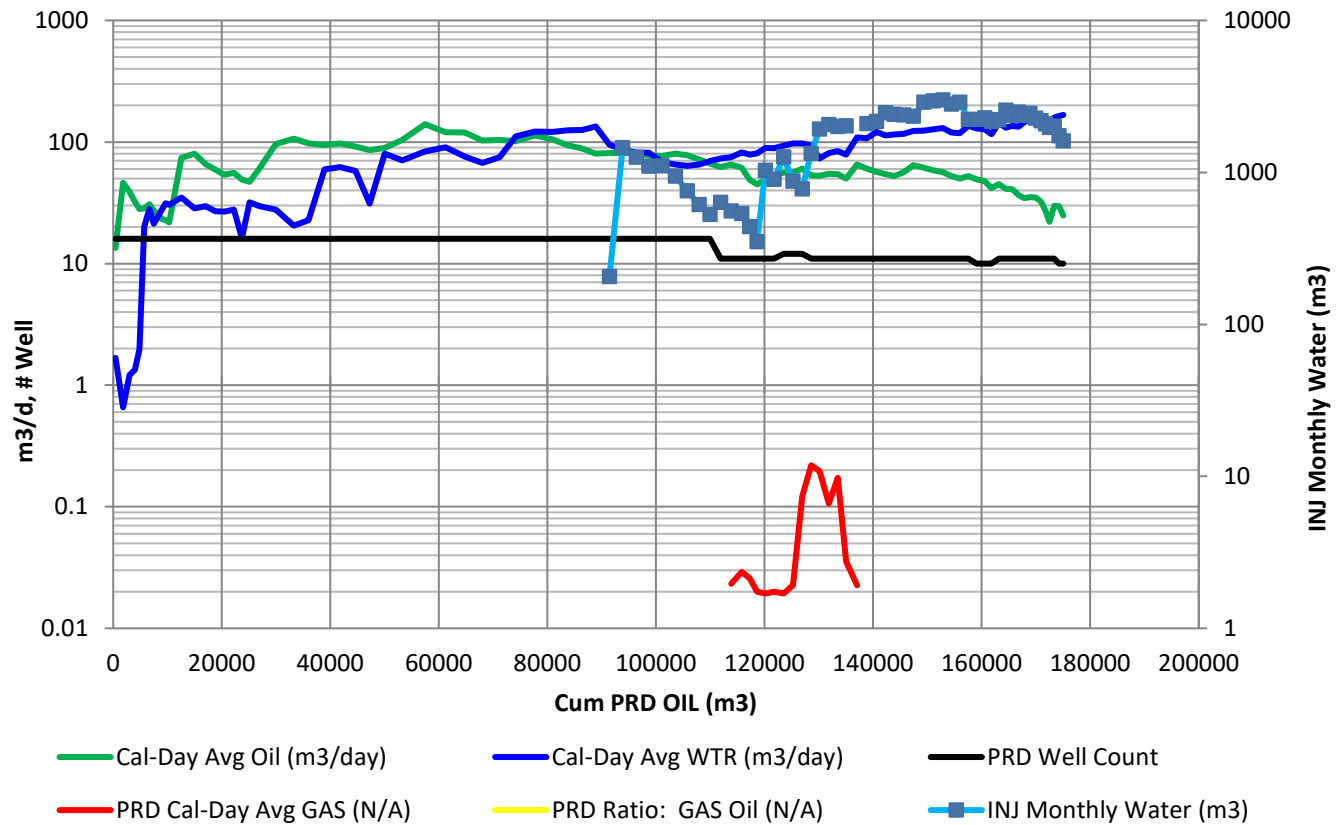
East Manson Unit No. 7 (Section 35& 36-012-28W1, Section 01 & 02-013-28W1) - VRR Table																										
Month	Days	Monthly Oil Prod (bbl)	Monthly Oil Prod (m3)	Monthly Gas Prod (E3m3)	Monthly H2O Prod (bbl)	Monthly H2O Prod (m3)	Monthly H2O Inj (bbl)	Monthly H2O Inj (m3)	Oil Prod (m3/d)	Gas Prod (E3m3/d)	H2O Prod (m3/d)	H2O Inj (m3/d)	Cum Oil (bbl)	Cum Oil (m3)	Cum Gas (E3m3)	Cum H2O (m3)	Cum H2O Inj (m3)	Prod Well Count	GOR (m3/m3)	H2OCut %	Voidage (rm3/d)	Monthly VRR	Cum GOR (m3/m3)	H2OCut %	Cum Void (rm3)	Cum VRR
Mar-13	31	2,625	417.3	0	328	52.1	0	0	13	0	2	0	2,625	417	0	52	0	16	0	11.1%	12	0.00	0.0	11.1%	357.0	0.000
Apr-13	30	8,723	1,386.7	0	124	19.7	0	0	46	0	1	0	11,347	1804	0	72	0	16	0	1.4%	34	0.00	0.0	3.8%	1389.1	0.000
May-13	31	7,620	1,211.5	0	235	37.4	0	0	39	0	1	0	18,967	3015	0	109	0	16	0	3.0%	30	0.00	0.0	3.5%	2311.0	0.000
Jun-13	30	6,064	964.0	0	253	40.2	0	0	32	0	1	0	25,031	3980	0	149	0	16	0	4.0%	25	0.00	0.0	3.6%	3055.2	0.000
Jul-13	31	5,474	870.3	0	386	61.4	0	0	28	0	2	0	30,505	4850	0	211	0	16	0	6.6%	22	0.00	0.0	4.2%	3752.2	0.000
Aug-13	31	5,535	880.0	0	3,939	626.2	0	0	28	0	20	0	36,041	5730	0	837	0	16	0	41.6%	41	0.00	0.0	12.7%	5023.9	0.000
Sep-13	30	5,798	921.7	0	5,297	842.2	0	0	31	0	28	0	41,838	6652	0	1679	0	16	0	47.7%	51	0.00	0.0	20.2%	6543.3	0.000
Oct-13	31	5,300	842.6	0	4,138	657.8	0	0	27	0	21	0	47,138	7494	0	2337	0	16	0	43.8%	41	0.00	0.0	23.8%	7819.5	0.000
Nov-13	30	4,772	758.6	0	4,613	733.4	0	0	25	0	24	0	51,910	8253	0	3070	0	16	0	49.2%	43	0.00	0.0	27.1%	9110.4	0.000
Dec-13	31	4,538	721.5	0	5,404	859.1	0	0	23	0	28	0	56,448	8974	0	3930	0	16	0	54.4%	45	0.00	0.0	30.5%	10500.6	0.000
Jan-14	31	4,445	706.6	0	6,129	974.4	0	0	23	0	31	0	60,893	9681	0	4904	0	16	0	58.0%	48	0.00	0.0	33.6%	11995.8	0.000
Feb-14	28	3,847	611.6	0	5,341	849.1	0	0	22	0	30	0	64,740	10292	0	5753	0	16	0	58.1%	46	0.00	0.0	35.9%	13295.7	0.000
Mar-14	31	14,443	2,296.2	0	6,809	1,082.5	0	0	74	0	35	0	79,183	12589	0	6836	0	16	0	32.0%	89	0.00	0.0	35.2%	16059.9	0.000
Apr-14	30	15,173	2,412.3	0	5,374	854.4	0	0	80	0	28	0	94,357	15001	0	7690	0	16	0	26.2%	87	0.00	0.0	33.9%	18679.6	0.000
May-14	31	12,809	2,036.3	0	5,776	918.2	0	0	66	0	30	0	107,165	17037	0	8608	0	16	0	31.1%	78	0.00	0.0	33.6%	21088.9	0.000
Jun-14	30	11,157	1,773.8	0	5,099	810.7	0	0	59	0	27	0	118,322	18811	0	9419	0	16	0	31.4%	70	0.00	0.0	33.4%	23198.5	0.000
Jul-14	31	10,507	1,670.5	0	5,230	831.5	0	0	54	0	27	0	128,830	20482	0	10250	0	16	0	33.2%	66	0.00	0.0	33.4%	25253.7	0.000
Aug-14	31	10,892	1,731.6	0	5,412	860.4	0	0	56	0	28	0	139,721	22213	0	11111	0	16	0	33.2%	69	0.00	0.0	33.3%	27382.4	0.000
Sep-14	30	9,280	1,475.4	0	3,051	485.1	0	0	49	0	16	0	149,001	23689	0	11596	0	16	0	24.7%	52	0.00	0.0	32.9%	28947.0	0.000
Oct-14	31	9,182	1,459.8	0	6,223	989.4	0	0	47	0	32	0	158,183	25148	0	12585	0	16	0	40.4%	66	0.00	0.0	33.4%	31007.0	0.000
Nov-14	30	11,461	1,822.1	0	5,618	893.2	0	0	61	0	30	0	169,644	26971	0	13478	0	16	0	32.9%	74	0.00	0.0	33.3%	33234.9	0.000
Dec-14	31	18,730	2,977.8	0	5,406	859.5	0	0	96	0	28	0	188,375	29948	0	14338	0	16	0	22.4%	98	0.00	0.0	32.4%	36272.4	0.000
Jan-15	31	20,775	3,302.9	0	4,006	636.9	0	0	107	0	21	0	209,150	33251	0	14975	0	16	0	16.2%	98	0.00	0.0	31.1%	39323.6	0.000
Feb-15	28	17,141	2,725.0	0	4,004	636.5	0	0	97	0	23	0	226,290	35976	0	15611	0	16	0	18.9%	94	0.00	0.0	30.3%	41952.5	0.000
Mar-15	31	18,442	2,931.9	0	11,654	1,852.7	0	0	95	0	60	0	244,732	38908	0	17464	0	16	0	38.7%	129	0.00	0.0	31.0%	45954.9	0.000
Apr-15	30	18,378	2,921.7	0	11,715	1,862.4	0	0	97	0	62	0	263,110	41830	0	19327	0	16	0	38.9%	133	0.00	0.0	31.6%	49959.7	0.000
May-15	31	17,878	2,842.3	0	11,260	1,790.1	0	0	92	0	58	0	280,988	44672	0	21117	0	16	0	38.6%	125	0.00	0.0	32.1%	53833.7	0.000
Jun-15	30	16,219	2,578.5	0	5,868	932.9	0	0	86	0	31	0	297,207	47251	0	22050	0	16	0	26.6%	94	0.00	0.0	31.8%	56653.6	0.000
Jul-15	31	17,458	2,775.6	0	15,640	2,486.5	0	0	90	0	80	0	314,665	50026	0	24536	0	16	0	47.3%	146	0.00	0.0	32.9%	61178.9	0.000
Aug-15	31	20,348	3,235.0	0	13,808	2,195.3	0	0	104	0	71	0	335,013	53261	0	26731	0	16	0	40.4%	147	0.00	0.0	33.4%	65746.8	0.000
Sep-15	30	26,462	4,207.0	0	15,801	2,512.0	0	0	140	0	84	0	361,475	57468	0	29243	0	16	0	37.4%	187	0.00	0.0	33.7%	71342.7	0.000
Oct-15	31	23,502	3,736.4	0	17,654	2,806.7	0	0	121	0	91	0	384,977	61205	0	32050	0	16	0	42.9%	179	0.00	0.0	34.4%	76891.2	0.000
Nov-15	30	22,568	3,587.9	0	14,341	2,280.0	0	0	120	0	76	0	407,545	64793	0	34330	0	16	0	38.9%	164	0.00	0.0	34.6%	81801.9	0.000
Dec-15	31	20,099	3,195.5	0	13,151	2,090.9	0	0	103	0	67	0	427,645	67988	0	36421	0	16	0	39.6%	143	0.00	0.0	34.9%	86236.0	0.000
Jan-16	31	20,354	3,235.9	0	14,634	2,326.6	0	0	104	0	75	0	447,998	71224	0	38748	0	16	0	41.8%	152	0.00	0.0	35.2%	90936.5	0.000
Feb-16	29	18,545	2,948.3	0	20,244	3,218.5	0	0	102	0	111	0	466,543	74172	0	41966	0	16	0	52.2%	186	0.00	0.0	36.1%	96323.6	0.000
Mar-16	31	22,155	3,522.2	0	23,780	3,780.5	0	0	114	0	122	0	488,698	77694	0	45747	0	16	0	51.8%	206	0.00	0.0	37.1%	102694.5	0.000
Apr-16	30	19,896	3,163.0	0	22,909	3,642.1	0	0	105	0	121	0	508,594	80857	0	49389	0	16	0	53.5%	199	0.00	0.0	37.9%	108664.1	0.000
May-16	31	18,328	2,913.8	0	24,299	3,863.2	0	0	94	0	125	0	526,922	83771	0	53252	0	16	0	57.0%	194	0.00	0.0	38.9%	114674.0	0.000
Jun-16	30	16,698	2,654.6	0	23,639	3,758.2	0	0	88	0	125	0	543,619	86426	0	57010	0	16	0	58.6%	191	0.00	0.0	39.7%	120389.1	0.000
Jul-16	31	15,673	2,491.7	0	26,145	4,156.6	0	0	80	0	134	0	559,292	88918	0	61167	0	16	0	62.5%	193	0.00	0.0	40.8%	126385.8	0.000
Aug-16	31	15,842	2,518.6	0	18,509	2,942.6	1,297	206	81	0	95	7	575,134	91436	0	64109	206	16	0	53.9%	155	0.04	0.0	41.2%	131182.0	0.002
Sep-16	30	15,365	2,442.7	0	16,351	2,599.5	9,145	1,454	81	0	87	48	590,499	93879	0	66709	1660	16	0	51.6%	147	0.33	0.0	41.5%	135577.9	0.012
Oct-16	31	15,791	2,510.4	0	15,961	2,537.6	7,935	1,261	81	0	82	41	606,290	96389	0	69246	2922	16	0	50.3%	141	0.29	0.0	41.8%	139960.9	0.021
Nov-16	30	14,563	2,315.3	0	15,404	2,448.9	6,908	1,098	77	0	82	37	620,853	98705	0	71695	4020	16	0	51.4%	138	0.27	0.0	42.1%	144112.4	0.028
Dec-16	31	14,957	2,377.9	0	13,348	2,122.1	6,934	1,102	77	0	68	36	635,810	101083	0	73817	5122	16	0	47.2%	125	0.29	0.0	42.2%	147981.1	0.035
Jan-17	31	15,661	2,489.8	0	12,691	2,017.7	5,940	944	80	0	65	30	651,471	103572	0	75835	6067	16	0	44.8%	124	0.25	0.0	42.3%	151826.6	0.040
Feb-17	28	13,676	2,174.3	0	11,223	1,784.3	4,772	759	78	0	64	27	665,147	105747	0	77619	6825	16	0	45.1%	121	0.23	0.0	42.3%	155207.2	0.044
Mar-17	31	13,997	2,225.2	0	12,732	2,024.2	3,872	616	72	0	65	20	679,144	107972	0	79644	7441	16	0	47.6%	118	0.17	0.0	42.5%	158866.1	0.047
Apr-17	30	12,576	1,999.4	0	13,198	2,098.3	3,333	530	67	0	70	18	691,720	109971	0	81742	7971	16	0	51.2%	119	0.15	0.0	42.6%	162434.5	0.049
May-17	31	12,161	1,933.4	0	14,286	2,271.2	4,000	636	62	0	73	21	703,881	111905	0	84013	8607	11	0	54.0%	119	0.17	0.0	42.9%	166128.7	0.052
Jun-17	30	12,324	1,9																							

East Manson Unit No. 7 (Section 35& 36-012-28W1, Section 01 & 02-013-28W1) - VRR Table																									
		Monthly	Monthly	Monthly	Monthly	Monthly	Monthly	Monthly										Prod							
Month	Days	Oil Prod	Oil Prod	Gas Prod	H2O Prod	H2O Prod	H2O Inj	H2O Inj	Oil Prod	Gas Prod	H2O Prod	H2O Inj	Cum Oil	Cum Oil	Cum Gas	Cum H2O	Cum H2O Inj	Well	GOR						
		(bbl)	(m3)	(E3m3)	(bbl)	(m3)	(bbl)	(m3)	(m3/d)	(E3m3/d)	(m3/d)	(m3/d)	(bbl)	(m3)	(E3m3)	(m3)	(m3)	Count	(m3/m3)	H2OCut	Voidage	Monthly	Cum GOR	H2OCut	Cum Void
																				%	(rm3/d)	VRR	(m3/m3)	%	(rm3)
Nov-18	30	10,279	1,634.1	0	21,421	3,405.6	15,577	2,477	54	0	114	83	894,807	142259	32	134088	31455	11	0	67.6%	154	0.54	0.2	48.5%	240875.2
Dec-18	31	10,208	1,622.9	0	22,562	3,586.9	15,137	2,406	52	0	116	78	905,015	143882	32	137675	33861	11	0	68.8%	155	0.50	0.2	48.9%	245665.1
Jan-19	31	10,991	1,747.3	0	22,768	3,619.8	15,006	2,386	56	0	117	77	916,006	145629	32	141295	36247	11	0	67.4%	159	0.49	0.2	49.2%	250578.8
Feb-19	28	11,365	1,806.8	0	21,709	3,451.4	14,756	2,346	65	0	123	84	927,371	147436	32	144746	38593	11	0	65.6%	171	0.49	0.2	49.5%	255366.7
Mar-19	31	11,951	1,900.1	0	24,128	3,835.9	18,213	2,896	61	0	124	93	939,322	149336	32	148582	41489	11	0	66.9%	169	0.56	0.2	49.9%	260609.2
Apr-19	30	11,028	1,753.3	0	24,046	3,822.9	18,581	2,954	58	0	127	98	950,351	151089	32	152405	44443	11	0	68.6%	171	0.58	0.2	50.2%	265731.5
May-19	31	10,980	1,745.7	0	25,404	4,038.8	18,887	3,003	56	0	130	97	961,331	152835	32	156444	47445	11	0	69.8%	172	0.57	0.2	50.6%	271065.3
Jun-19	30	9,904	1,574.5	0	22,525	3,581.1	17,713	2,816	52	0	119	94	971,235	154409	32	160025	50261	11	0	69.5%	158	0.60	0.2	50.9%	275814.0
Jul-19	31	9,733	1,547.3	0	23,023	3,660.3	18,275	2,905	50	0	118	94	980,967	155957	32	163685	53167	11	0	70.3%	155	0.61	0.2	51.2%	280622.4
Aug-19	31	10,250	1,629.6	0	26,520	4,216.2	14,036	2,232	53	0	136	72	991,218	157586	32	167901	55398	11	0	72.1%	175	0.41	0.2	51.6%	286049.8
Sep-19	30	9,299	1,478.4	0	24,498	3,894.7	14,060	2,235	49	0	130	75	1,000,517	159065	32	171796	57633	10	0	72.5%	166	0.45	0.2	51.9%	291043.5
Oct-19	31	9,315	1,481.0	0	24,847	3,950.2	14,368	2,284	48	0	127	74	1,009,832	160546	32	175746	59918	10	0	72.7%	163	0.45	0.2	52.3%	296094.9
Nov-19	30	7,849	1,247.9	0	21,840	3,472.2	13,638	2,168	42	0	116	72	1,017,681	161793	32	179218	62086	10	0	73.6%	147	0.50	0.2	52.6%	300495.7
Dec-19	31	8,786	1,396.8	0	27,991	4,450.0	13,971	2,221	45	0	144	72	1,026,467	163190	32	183668	64307	11	0	76.1%	177	0.41	0.2	53.0%	305988.1
Jan-20	31	8,028	1,276.3	0	25,485	4,051.7	16,185	2,573	41	0	131	83	1,034,495	164467	32	187720	66880	11	0	76.0%	161	0.52	0.2	53.3%	310992.1
Feb-20	29	7,470	1,187.5	0	24,799	3,942.6	14,958	2,378	41	0	136	82	1,041,965	165654	32	191663	69258	11	0	76.9%	167	0.49	0.2	53.6%	315821.7
Mar-20	31	7,137	1,134.7	0	26,015	4,136.0	15,720	2,499	37	0	133	81	1,049,102	166789	32	195799	71757	11	0	78.5%	161	0.50	0.2	54.0%	320807.1
Apr-20	30	6,533	1,038.6	0	27,409	4,357.5	14,953	2,377	35	0	145	79	1,055,635	167827	32	200156	74135	11	0	80.8%	171	0.47	0.2	54.4%	325944.9
May-20	31	6,851	1,089.2	0	30,220	4,804.5	15,428	2,453	35	0	155	79	1,062,486	168917	32	204961	76587	11	0	81.5%	181	0.44	0.2	54.8%	331569.0
Jun-20	30	6,586	1,047.1	0	29,147	4,633.8	14,329	2,278	35	0	154	76	1,069,072	169964	32	209594	78865	11	0	81.6%	181	0.42	0.2	55.2%	336990.8
Jul-20	31	6,301	1,001.8	0	29,964	4,763.8	13,800	2,194	32	0	154	71	1,075,373	170965	32	214358	81059	11	0	82.6%	178	0.40	0.2	55.6%	342510.1
Aug-20	31	5,280	839.4	0	27,921	4,438.9	13,089	2,081	27	0	143	67	1,080,653	171805	32	218797	83140	11	0	84.1%	164	0.41	0.2	56.0%	347584.4
Sep-20	30	4,175	663.7	0	27,978	4,448.0	12,442	1,978	22	0	148	66	1,084,827	172469	32	223245	85119	11	0	87.0%	165	0.40	0.2	56.4%	352539.6
Oct-20	31	5,824	925.9	0	31,021	4,931.8	12,651	2,011	30	0	159	65	1,090,651	173394	32	228177	87130	11	0	84.2%	182	0.36	0.2	56.8%	358172.5
Nov-20	30	5,588	888.4	0	30,870	4,907.8	10,951	1,741	30	0	164	58	1,096,239	174283	32	233085	88871	10	0	84.7%	186	0.31	0.2	57.2%	363753.9
Dec-20	31	4,845	770.3	0	32,576	5,179.0	10,149	1,614	25	0	167	52	1,101,084	175053	32	238264	90484	10	0	87.1%	186	0.28	0.2	57.6%	369521.6

East Manson Unit No. 7 - Rate Time



East Manson Unit No. 7 - Rate Cum

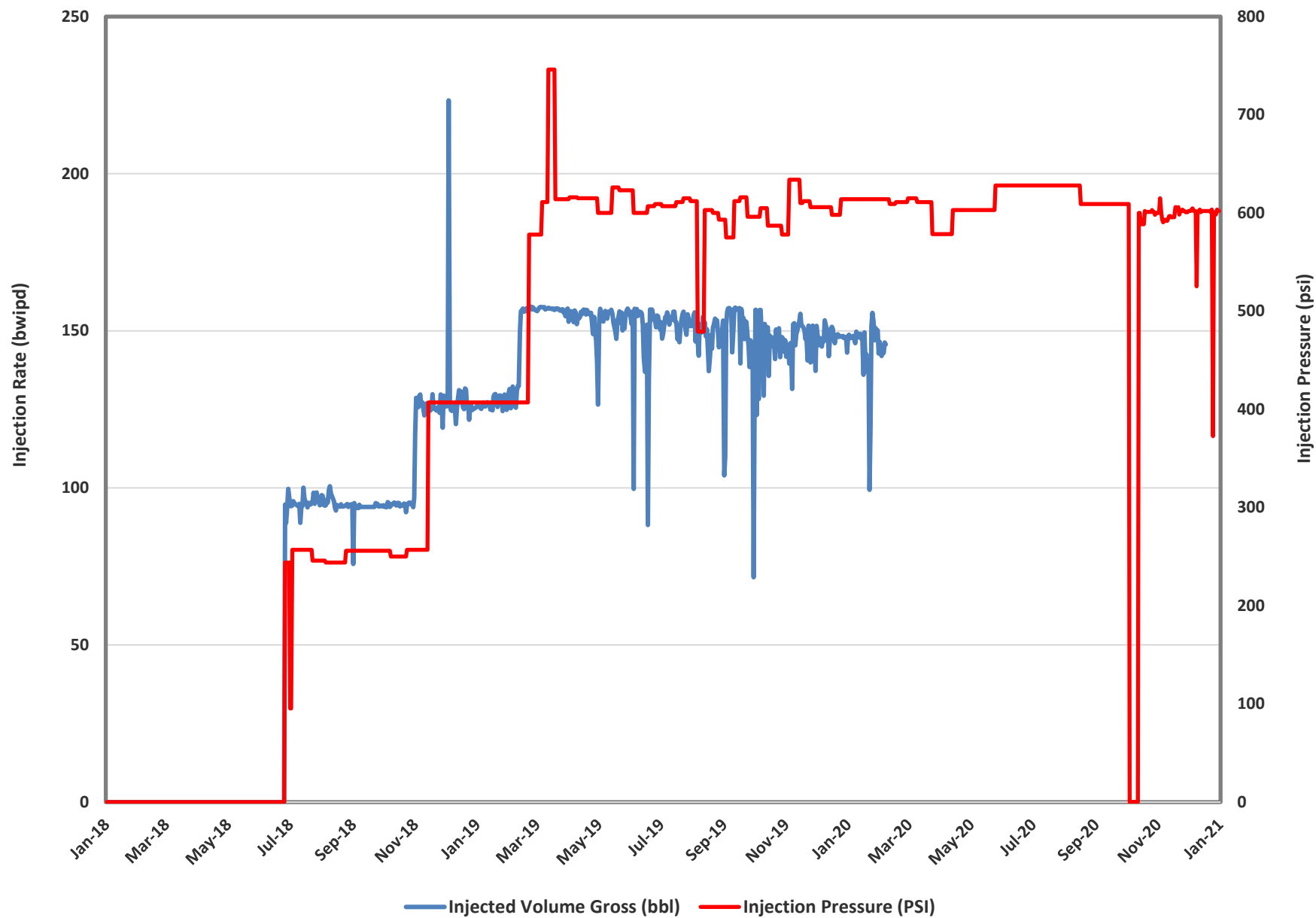


East Manson Unit No. 7 - Injection Parameters

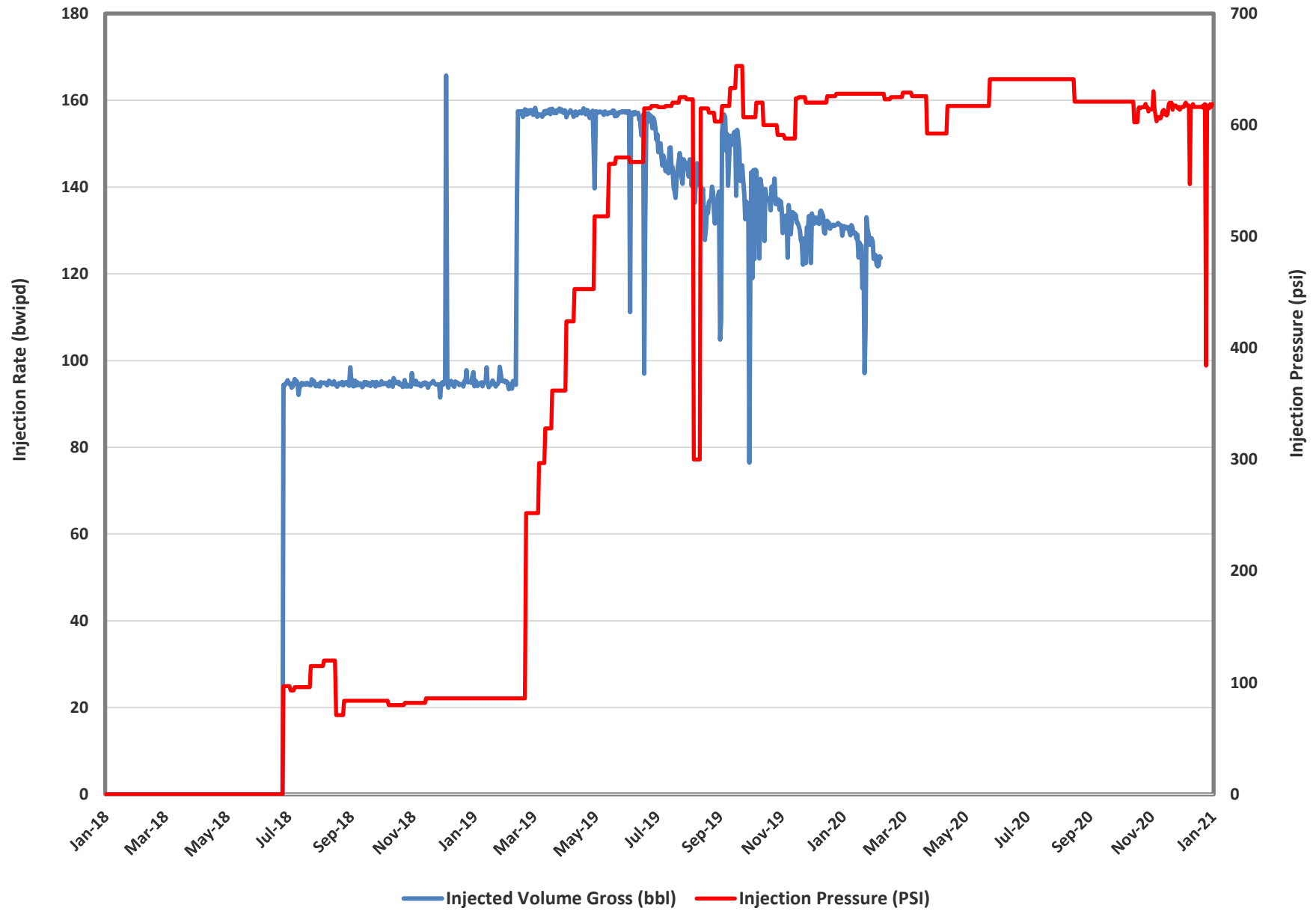
Month	Oil Rate (m3/d)	Gas Rate (e3m3/d)	Water Rate (m3/d)	Water Inj Rate (m3/d)	Cum Oil (m3)	Cum Gas (e3m3)	Cum Water (m3)	Cum Inj Water (m3)	GOR (m3/m3)	WOR (m3/m3)
Jan-19	56.4	0.0	116.8	77.0	145,629	31.9	141,295	36247.0	0	2.07
Feb-19	64.5	0.0	123.3	83.8	147,436	31.9	144,746	38593.0	0	1.91
Mar-19	61.3	0.0	123.7	93.4	149,336	31.9	148,582	41488.5	0	2.02
Apr-19	58.4	0.0	127.4	98.5	151,089	31.9	152,405	44442.6	0	2.18
May-19	56.3	0.0	130.3	96.9	152,835	31.9	156,444	47445.3	0	2.31
Jun-19	52.5	0.0	119.4	93.9	154,409	31.9	160,025	50261.3	0	2.27
Jul-19	49.9	0.0	118.1	93.7	155,957	31.9	163,685	53166.7	0	2.37
Aug-19	52.6	0.0	136.0	72.0	157,586	31.9	167,901	55398.3	0	2.59
Sep-19	49.3	0.0	129.8	74.5	159,065	31.9	171,796	57633.5	0	2.63
Oct-19	47.8	0.0	127.4	73.7	160,546	31.9	175,746	59917.7	0	2.67
Nov-19	41.6	0.0	115.7	72.3	161,793	31.9	179,218	62085.9	0	2.78
Dec-19	45.1	0.0	143.5	71.6	163,190	31.9	183,668	64307.0	0	3.19

Month	00/16-36 Inj Press. (psi)	02/01-01 Inj Press. (psi)	00/08-01 Inj Press. (psi)	03/09-01 Inj Press. (psi)	02/01-02 Inj Press. (psi)
Jan-19	614	628	589	628	625
Feb-19	612	626	611	625	622
Mar-19	604	618	617	617	614
Apr-19	593	607	607	606	605
May-19	609	622	622	621	621
Jun-19	628	641	637	638	639
Jul-19	628	641	637	638	639
Aug-19	619	631	628	629	629
Sep-19	609	621	619	619	619
Oct-19	426	616	614	614	593
Nov-19	599	613	611	611	609
Dec-19	592	607	593	606	603

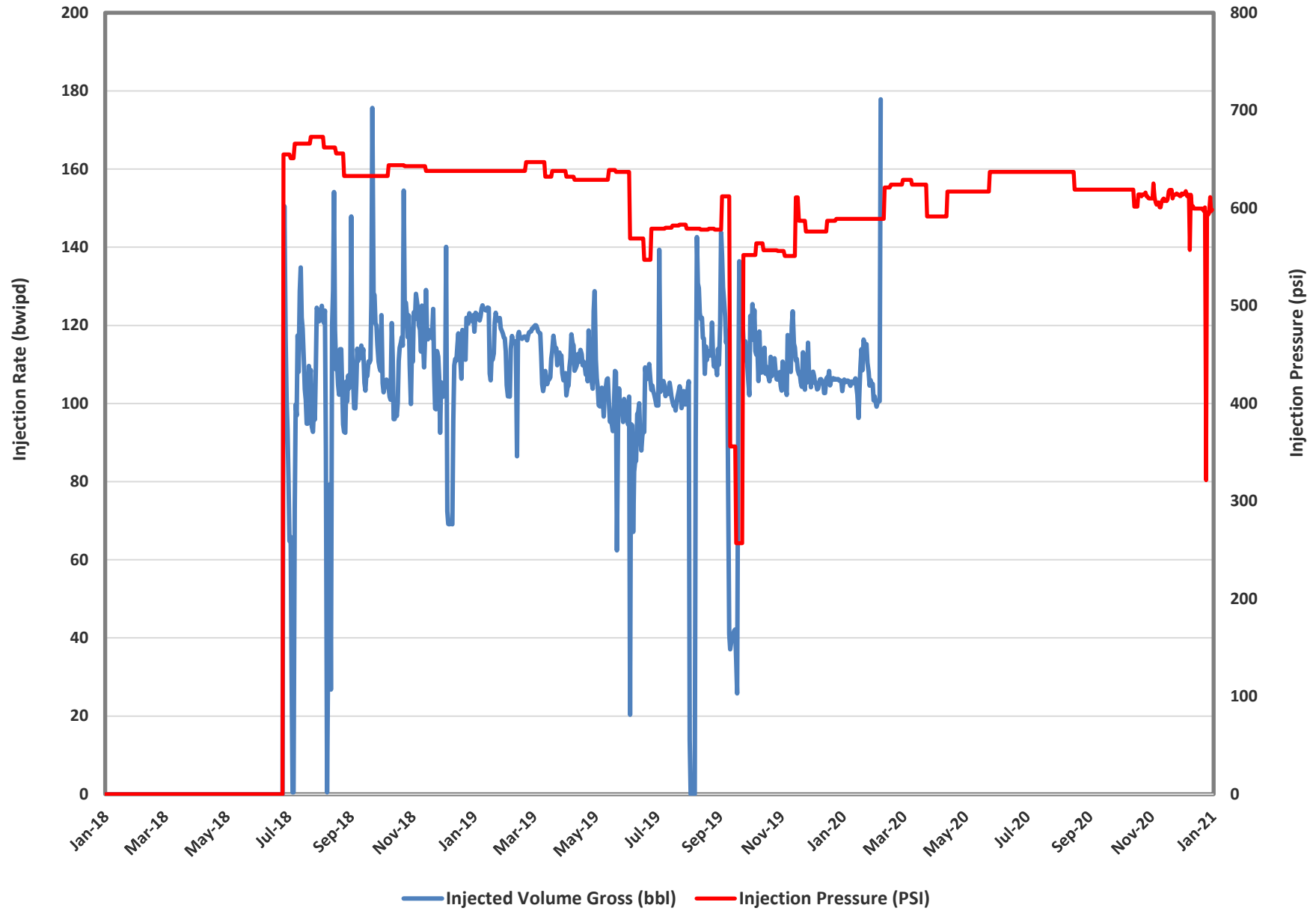
00/16-36-013-28W1 Rate vs Pressure



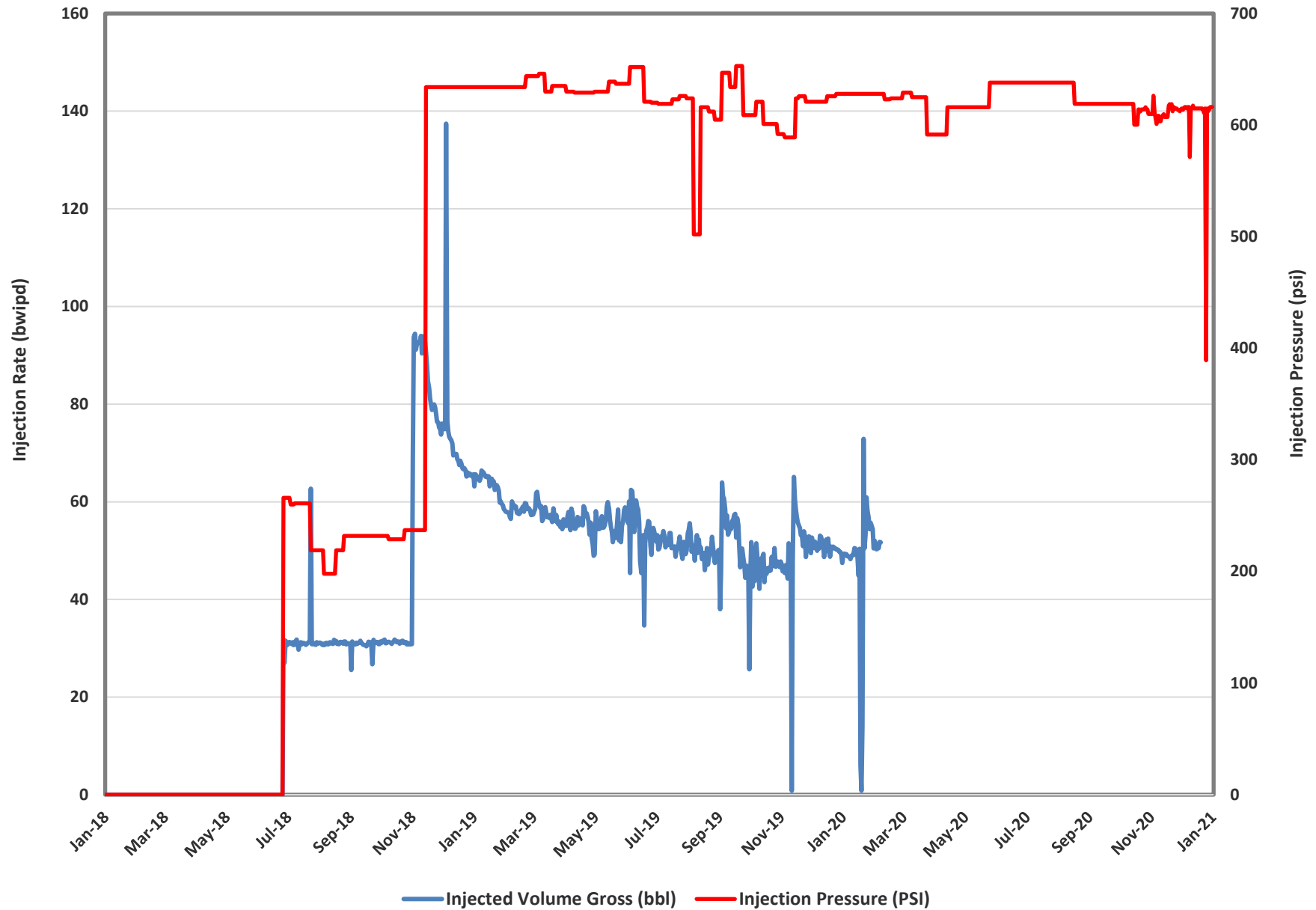
02/01-01-013-28W1 Rate vs Pressure



00/08-01-013-28W1 Rate vs Pressure



03/09-01-013-28W1 Rate vs Pressure



02/01-02-013-28W1 Rate vs Pressure

