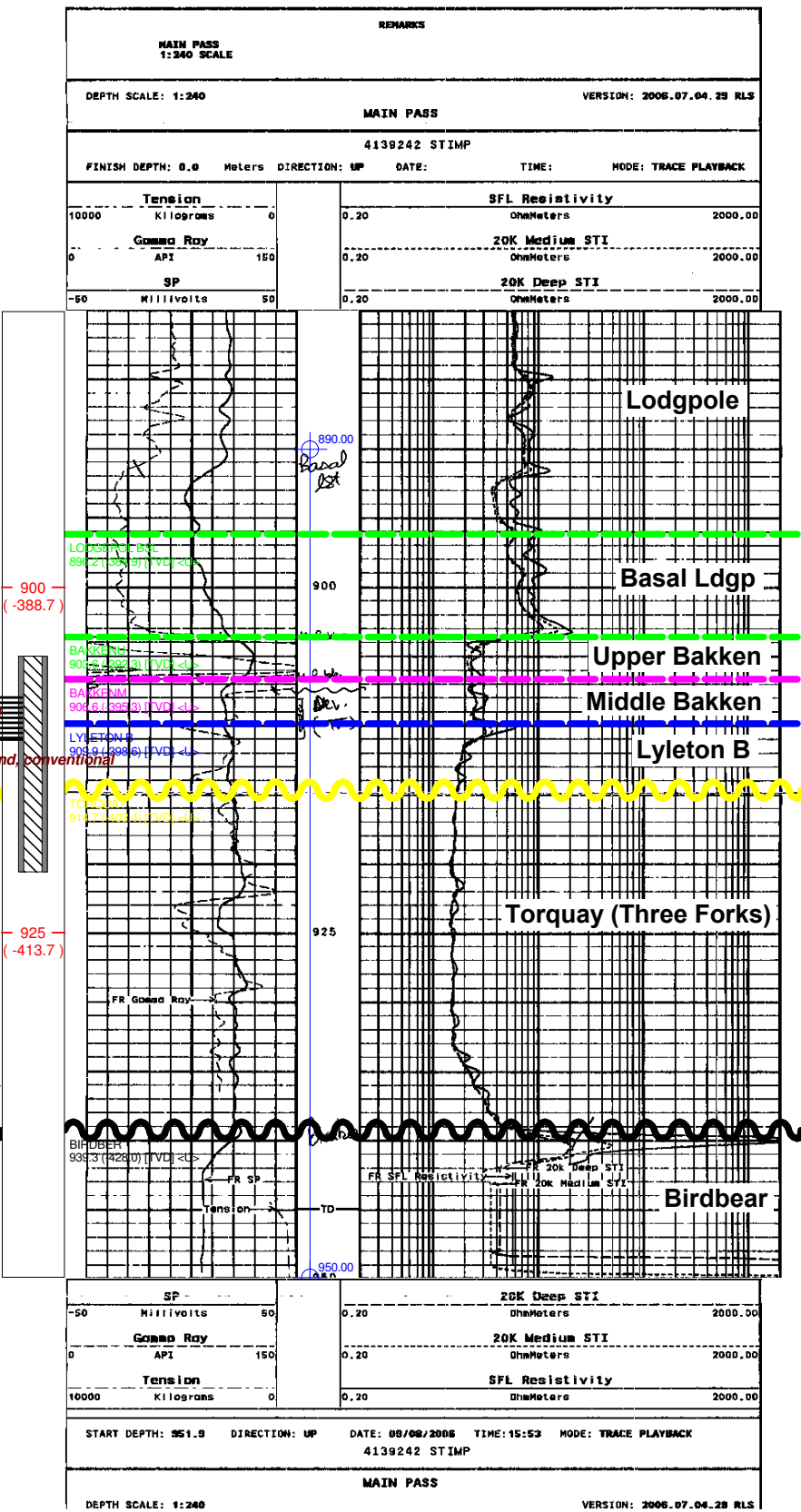
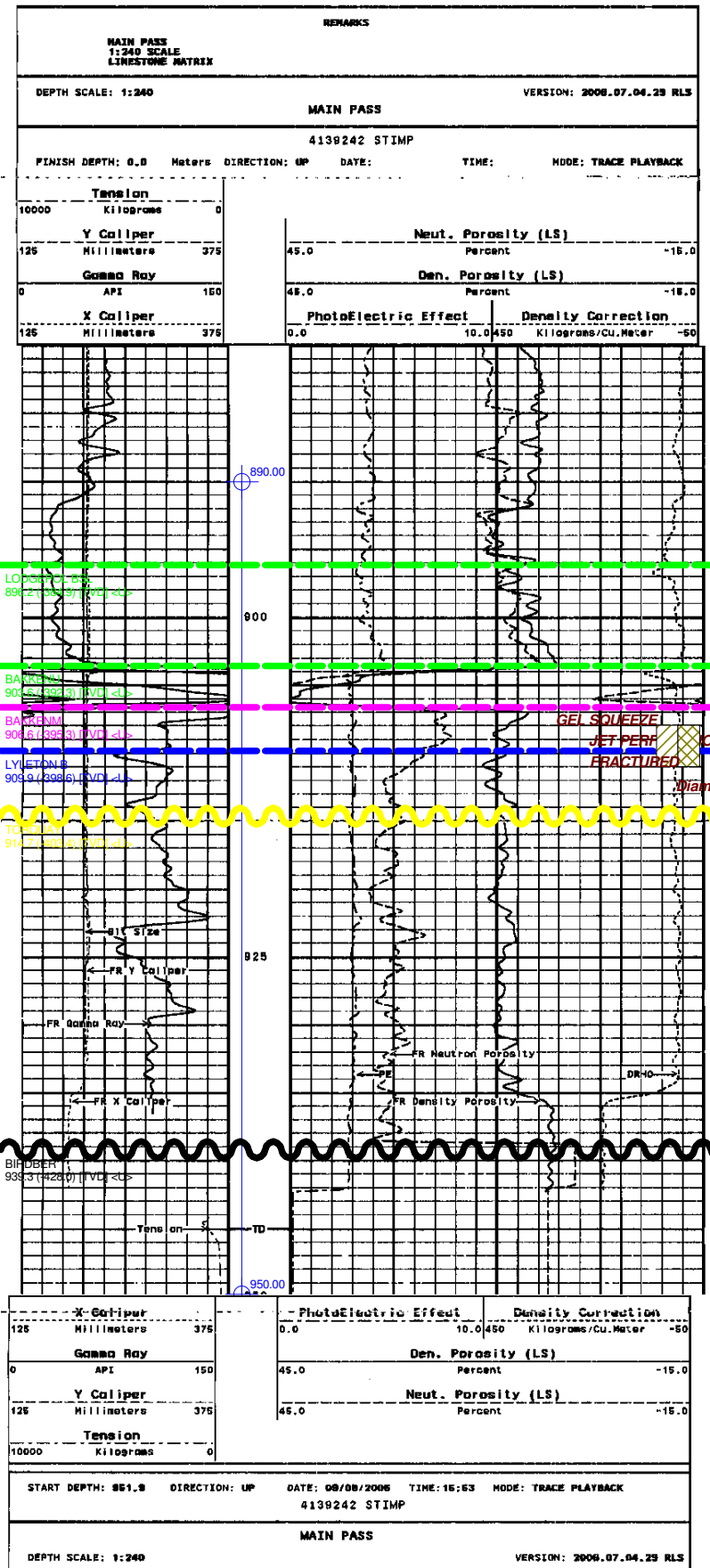


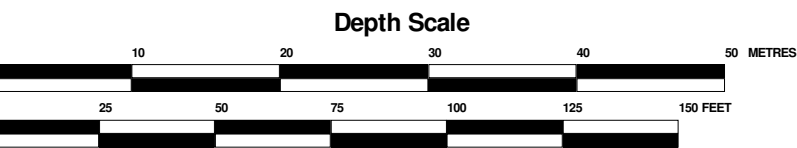
00/09-30-008-28W1/0

KB: 511.3 m      RR: 2006-09-09  
TD: 945.0 m [TVD]      FormTD: BIRDBER  
Mode: Prod      Fluid: Oil  
TUNDRA SINCLAIR PROV. 9-30-8-28 (WPM)



DST Information

Prod	Oil ( m3 )	Gas ( E3m3 )	Water ( m3 )
Cum	2543.0	0.0	1823.3
Daily	1.7	0.0	1.2



Legend	
●	Oil
■	Red
■	Anhydrite
■	Siltstone
■	Dolomite
■	Limestone
■	Shale
■	Sandstone
■	Breccia

Tundra Oil and Gas Limited

Proposed Ewart Unit 3  
Type Log  
09-30-008-28W1M  
Appendix 1

Produced by :  
AccuLogs Cross Section  
Version 7.11.0.43505  
Datum: NAD27

Author: bwlaron  
Modified On: Thursday, February 14, 2013 01:37PM  
Printed On: Thursday, February 14, 2013 01:37PM  
Start Formation: 20m. above BAKKENU  
End Formation: 5m. below Total Depth  
Cross Section Name: DALYLL2

Copyright 2011, IHS