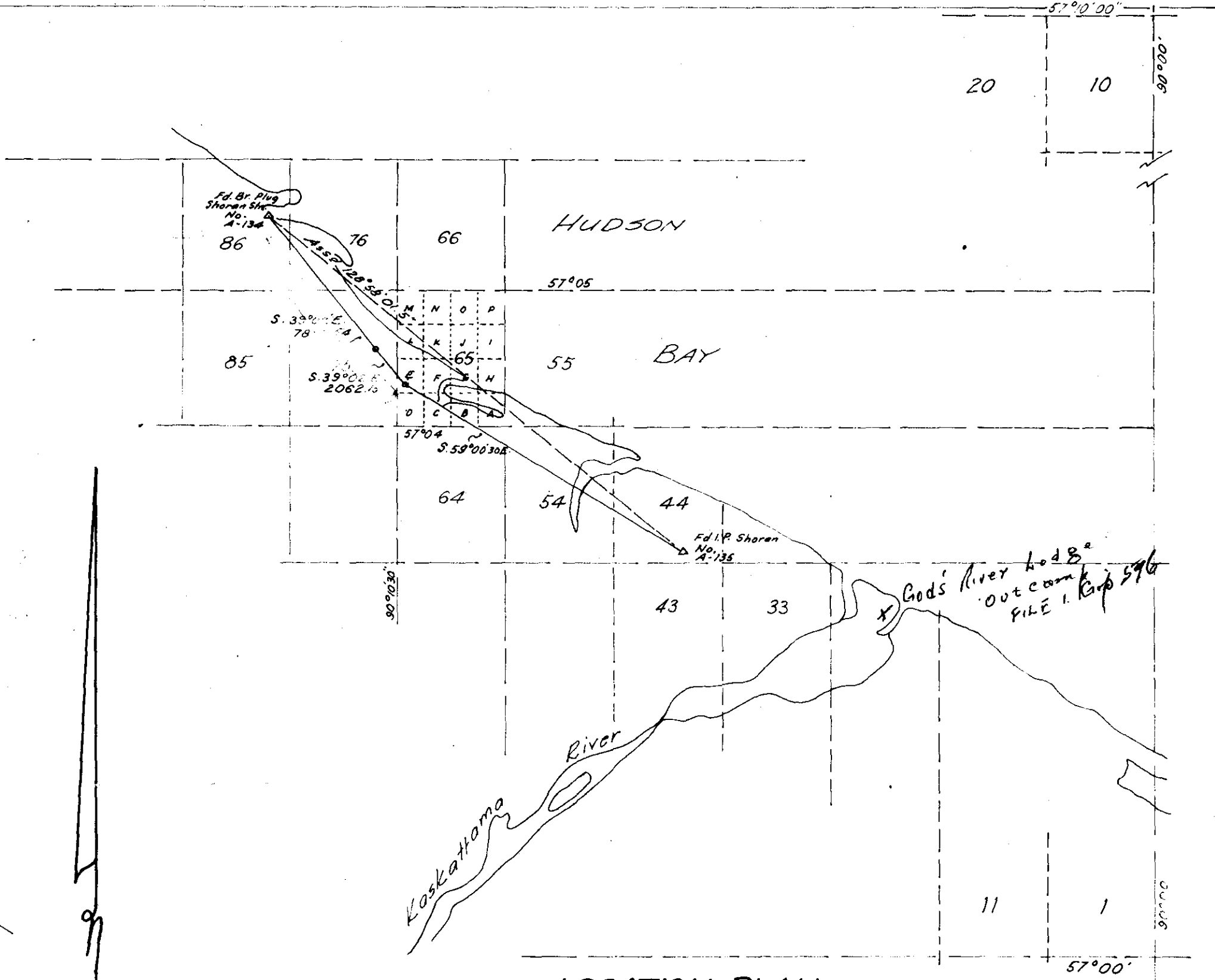


**DETAIL**  
Scale: 400 ft. to 1 in.



**LOCATION PLAN**  
Scale: 1 in. to 1 mile

**SOGEPET AQUIT KASKATTAMA  
PROV. #1**

S.W. Cor. Sec. 65 Grid Area 57°10' - 90°00'  
Unsurveyed Territory - Manitoba

Well is located 32'E. & 1878' N. of S.W. cor. Sec. 65 - 57°10' - 90°00' Grid Area  
Well located at Lat. 57°04'18.487" Long. 90°10'29.408"

Elevation: 15.8 Ground  
29.5 K.B.  
Datum: High tide mark on shore of bay 13.3 ft.

**BANFF OIL LTD.**

I certify that the survey represented by this plan is correct to the best of my knowledge and was completed on the 25<sup>th</sup> day of September 1966

*Ed J. Redman*  
Manitoba Land Surveyor

**MIDWEST SURVEYS**



C448-66