

POPULATION CHANGE BY CENSUS SUBDIVISION

July 2025

For statistical purposes, Manitoba's municipalities are grouped into eight Economic Regions (ER). Smaller than an Economic Region, Census Divisions are also formed by aggregating municipalities. Reference maps are provided on pages 5 and 6. This table shows the association between Manitoba's Economic Regions and its Census Divisions.

Manitoba Population Estimates - Gender Total (July 1)

Minimum Maximum

Percent Change (%)

Geography	2015	2020	2024	2025	2015 to 2025	2020 to 2025	2024 to 2025
Manitoba	1,293,598	1,380,132	1,492,144	1,509,702	16.71	9.39	1.18
Southeast	118,008	129,660	142,811	145,963	23.69	12.57	2.21
Division 01	18,159	19,909	20,584	20,882	15.00	4.89	1.45
Division 02	75,956	84,863	95,518	98,091	29.14	15.59	2.69
Division 12	23,893	24,888	26,709	26,990	12.96	8.45	1.05
South Central	65,175	69,314	74,749	75,878	16.42	9.47	1.51
Division 03	55,130	59,168	64,314	65,437	18.70	10.60	1.75
Division 04	10,045	10,146	10,435	10,441	3.94	2.91	0.06
Southwest	114,846	120,637	128,086	129,480	12.74	7.33	1.09
Division 05	13,269	13,405	13,674	13,733	3.50	2.45	0.43
Division 06	10,393	10,387	10,404	10,393	0.00	0.06	-0.11
Division 07	69,499	73,637	79,914	81,164	16.78	10.22	1.56
Division 15	21,685	23,208	24,094	24,190	11.55	4.23	0.40
North Central	50,323	52,138	55,645	56,389	12.05	8.15	1.34
Division 08	13,848	14,053	14,992	15,140	9.33	7.74	0.99
Division 09	24,495	25,099	26,324	26,688	8.95	6.33	1.38
Division 10	11,980	12,986	14,329	14,561	21.54	12.13	1.62
Winnipeg	717,789	772,273	847,190	855,628	19.20	10.79	1.00
Division 11	717,789	772,273	847,190	855,628	19.20	10.79	1.00
Interlake	92,963	98,895	105,318	107,575	15.72	8.78	2.14
Division 13	49,753	52,320	56,366	58,241	17.06	11.32	3.33
Division 14	19,029	19,948	21,133	21,450	12.72	7.53	1.50
Division 18	24,181	26,627	27,819	27,884	15.31	4.72	0.23
Parklands	41,902	42,074	42,316	42,376	1.13	0.72	0.14
Division 16	9,956	10,031	10,477	10,600	6.47	5.67	1.17
Division 17	22,269	22,305	22,255	22,210	-0.27	-0.43	-0.20
Division 20	9,677	9,738	9,584	9,566	-1.15	-1.77	-0.19
North	92,592	95,141	96,029	96,413	4.13	1.34	0.40
Division 19	17,167	18,071	19,311	19,568	13.99	8.28	1.33
Division 21	22,422	22,355	21,567	21,406	-4.53	-4.25	-0.75
Division 22	43,742	45,594	46,077	46,347	5.96	1.65	0.59
Division 23	9,261	9,121	9,074	9,092	-1.83	-0.32	0.20

Note: Minimum and Maximum Census Divisions are calculated for each percent change column.

Source: Statistics Canada, Tables 17-10-0150-01 and 17-10-0152-01

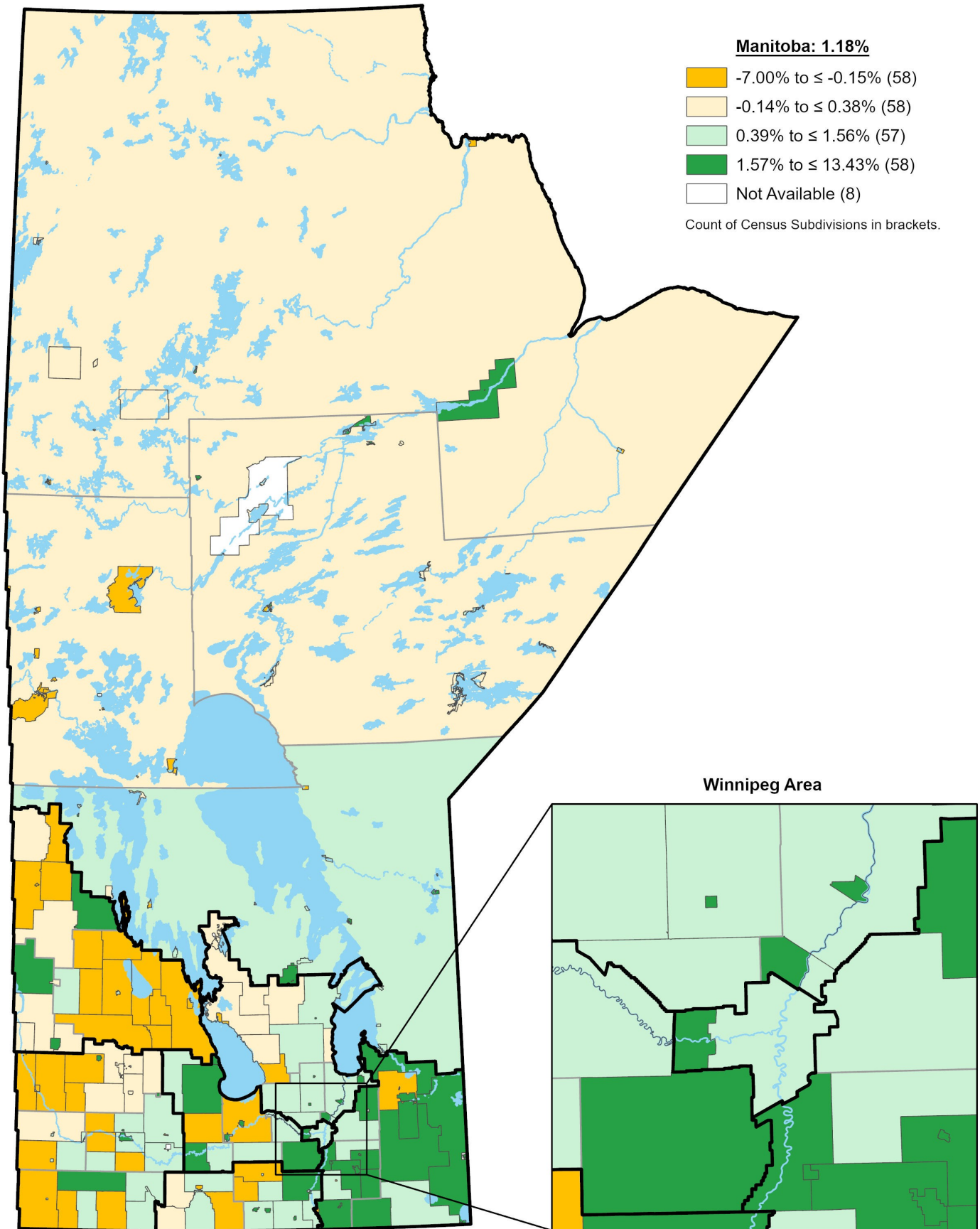
Statistics Canada has released revised demographic estimates for 2021/22 onward. This MBS report incorporates all revisions.

January 14, 2026

Manitoba Bureau of Statistics
Finance Policy & Research Division

One-year Population Change by Census Subdivision - Manitoba

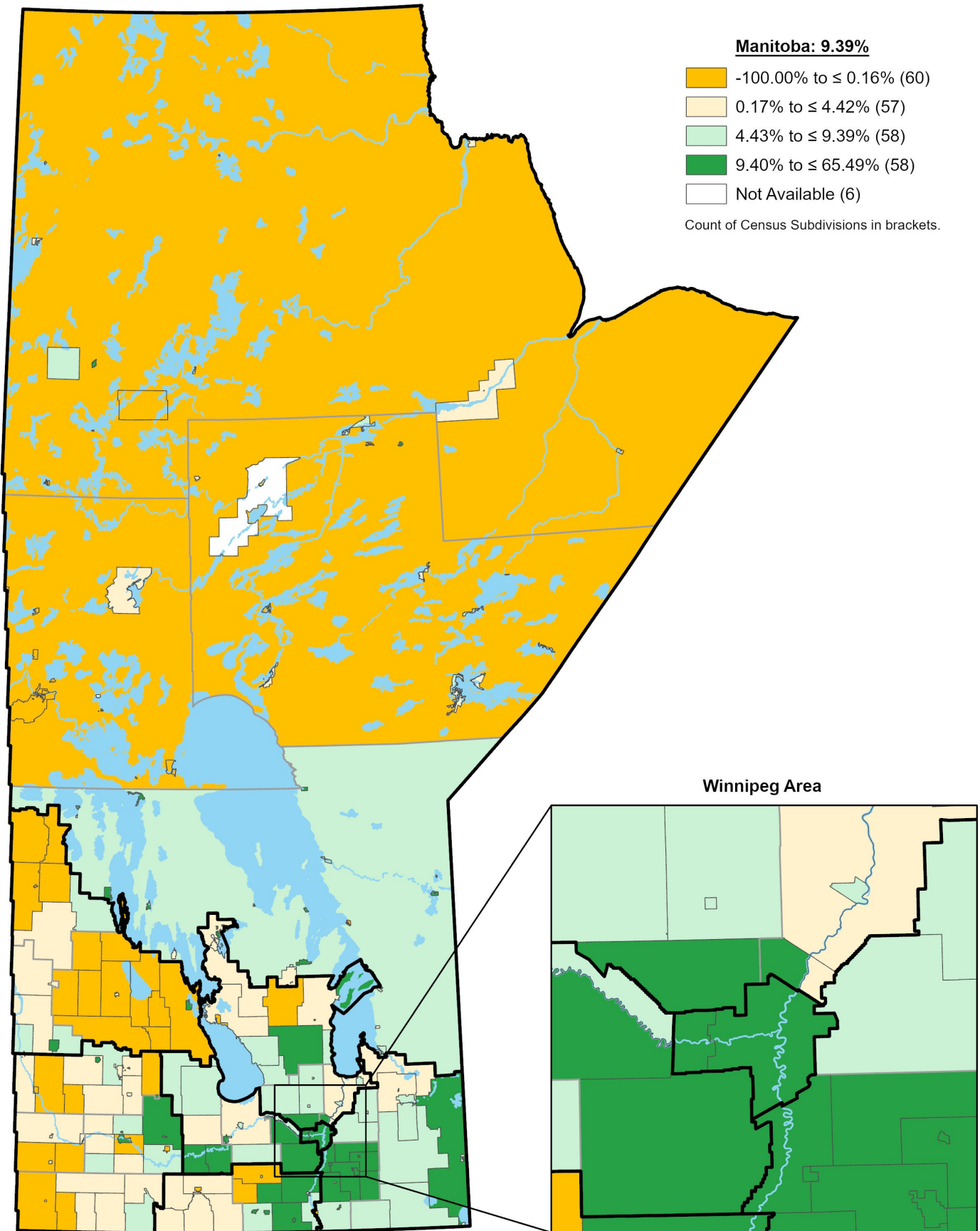
July 1, 2024 to July 1, 2025



Source: Statistics Canada, Table 17-10-0155-01

Five-year Population Change by Census Subdivision - Manitoba

July 1, 2020 to July 1, 2025



Source: Statistics Canada, Table 17-10-0155-01

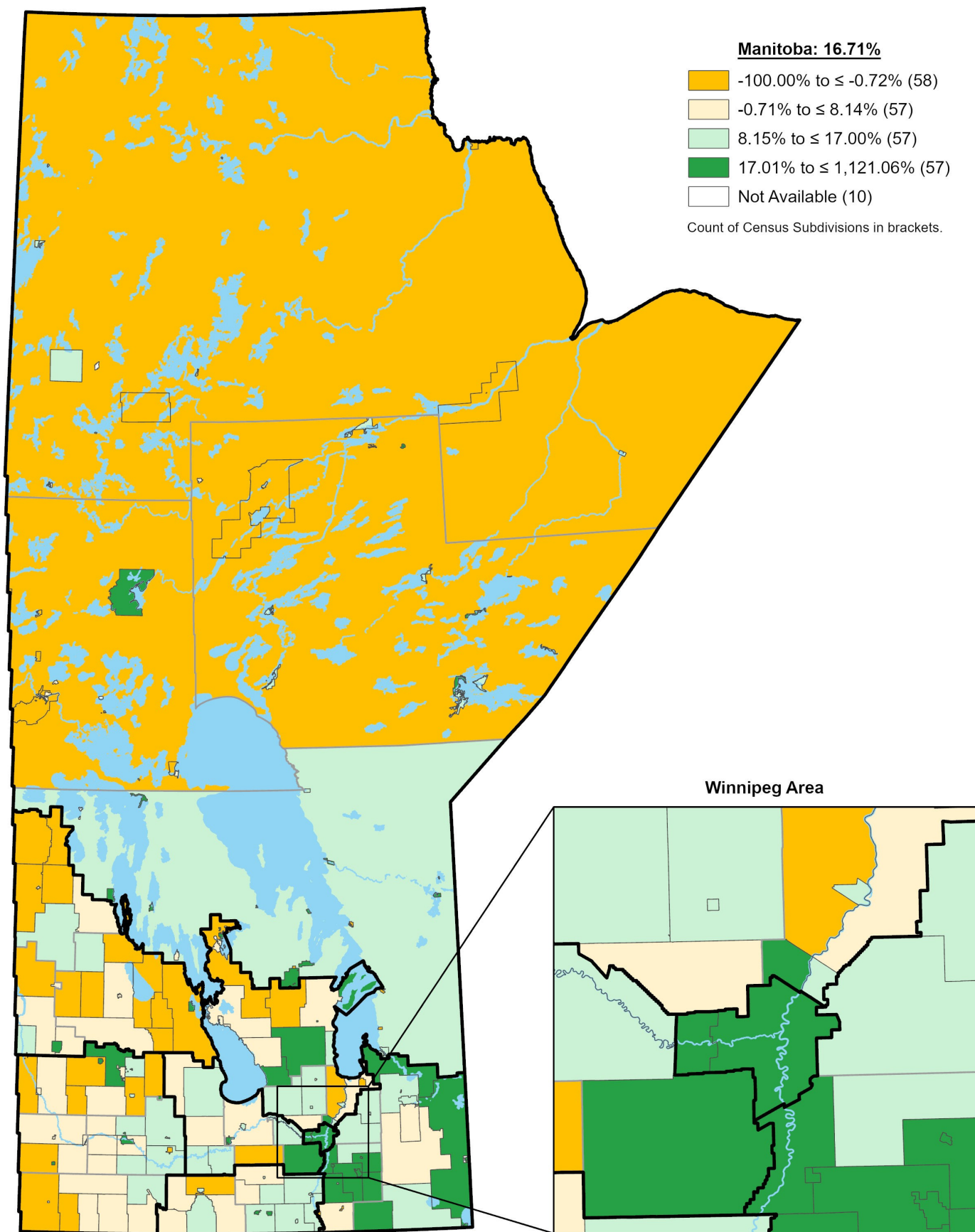
Ten-year Population Change by Census Subdivision - Manitoba

July 1, 2015 to July 1, 2025

Manitoba: 16.71%

- 100.00% to ≤ -0.72% (58)
- 0.71% to ≤ 8.14% (57)
- 8.15% to ≤ 17.00% (57)
- 17.01% to ≤ 1,121.06% (57)
- Not Available (10)

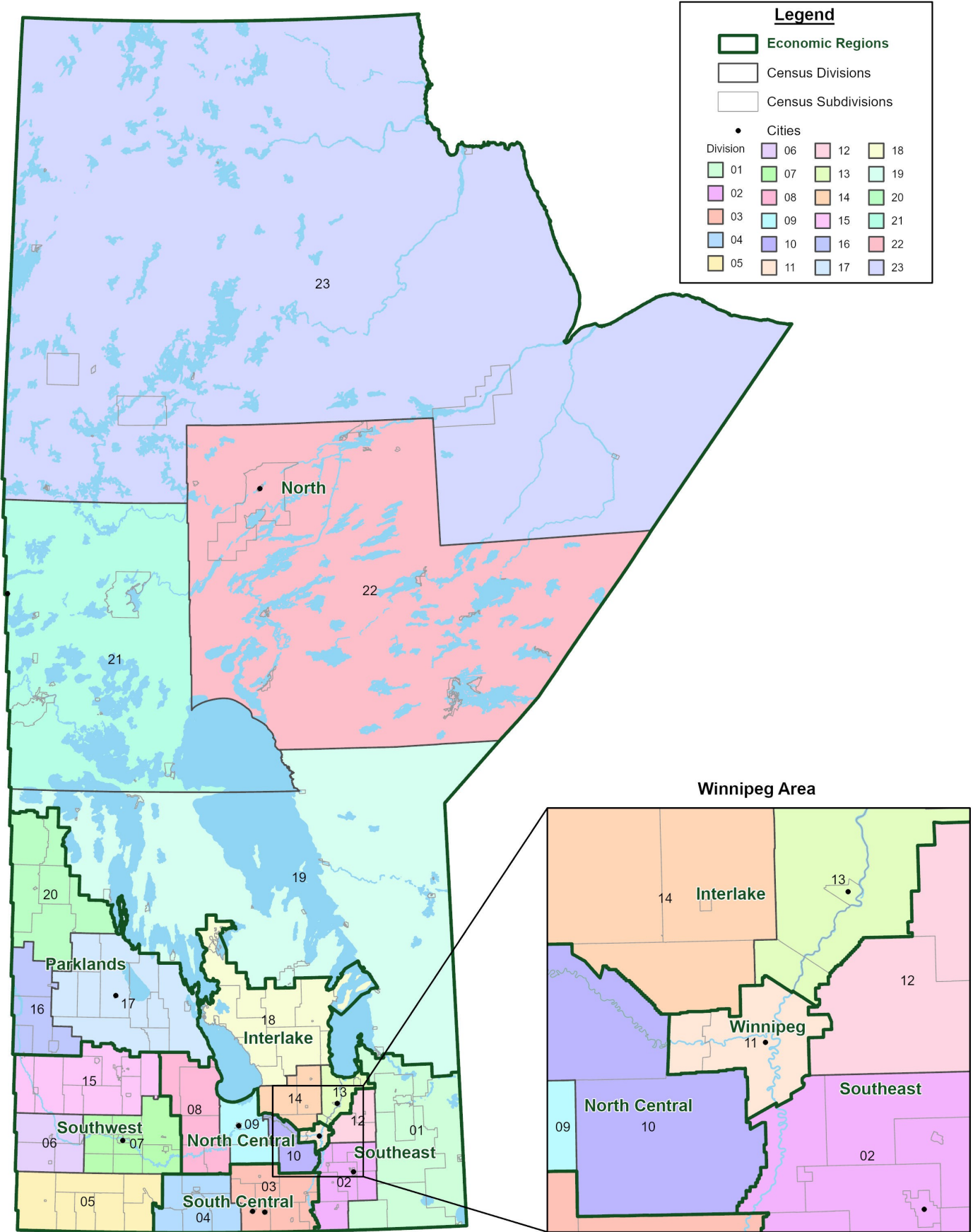
Count of Census Subdivisions in brackets.



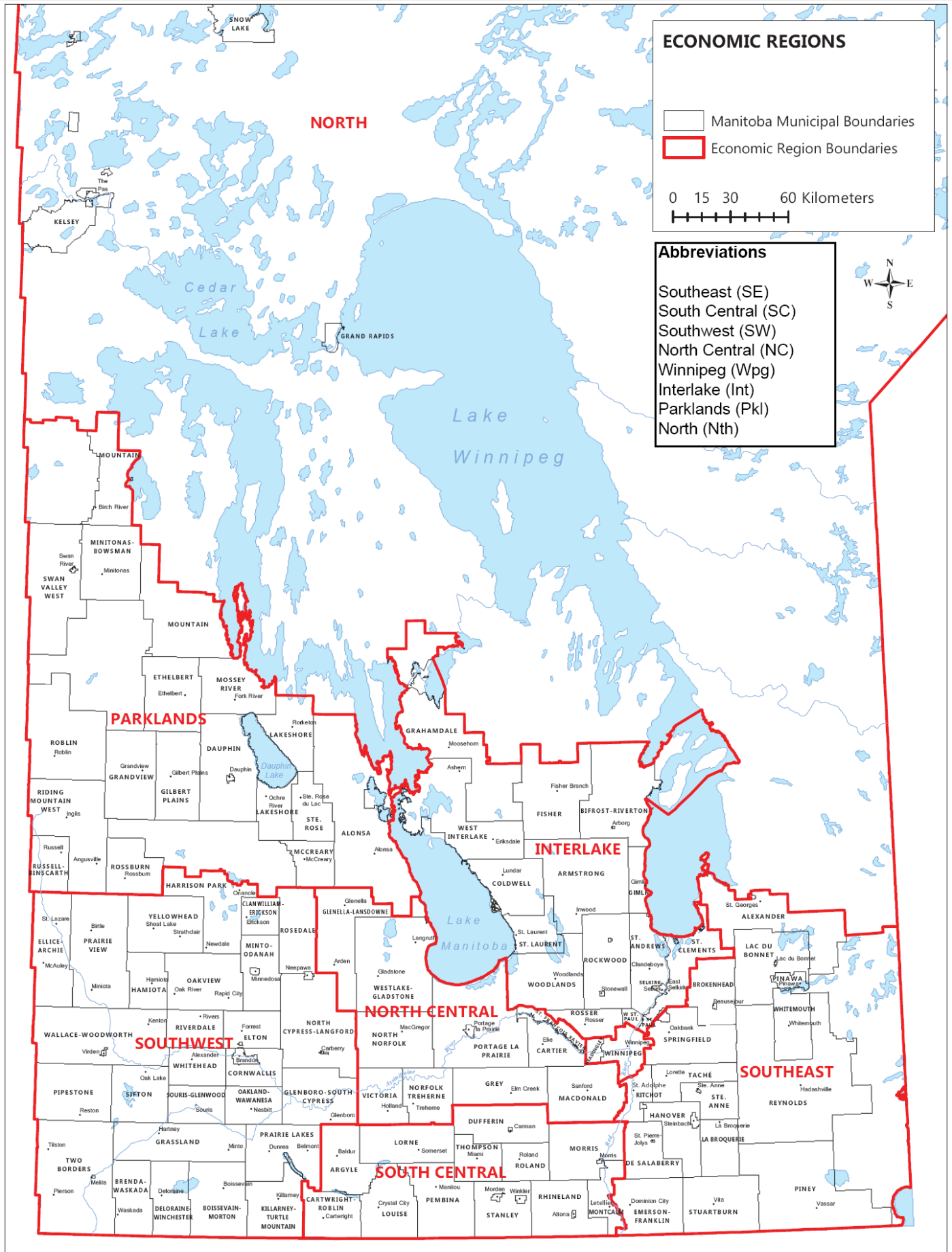
Source: Statistics Canada, Table 17-10-0155-01

Reference Map 1

Manitoba's Economic Regions - Showing Census Divisions and Subdivisions



Reference Map 2



Created: January, 2017

Cartography by GeoManitoba

Notes to Readers

Population Estimate

Estimates are derived from Census counts, but are adjusted for net Census undercoverage, incompletely enumerated Indian reserves and demographic growth.

Gender

Gender refers to an individual's personal and social identity as a man, woman or non-binary person (a person who is not exclusively a man or a woman).

Demographic estimates are available for the gender category "Men+" (includes men and/or boys, as well as some non-binary persons), and for the gender category "Women+" (includes women and/or girls, as well as some non-binary persons). Prior to 2021, the demographic estimates are based on the concept of sex at birth. Although gender and sex at birth are two different concepts, this change does not cause a significant break in the trend because the two concepts produce very similar distributions.

Comparability over time

Estimates of population and demographic components may not be fully comparable over time due to seasonal effects, changes in methodologies and completeness of source data.

Data Subject to Revision

The initial release of demographic estimates should be considered preliminary. In subsequent annual releases, estimates are updated, or finalized, using the standard procedure followed by Statistics Canada for decades.

Small number warning

Population estimates for Census Subdivisions (CSDs) sometimes consist of small numbers, particularly if broken down by age and gender. Estimates with such a high degree of detail may show a level of uncertainty that is more important. Thus, estimates for smaller numbers should be interpreted with caution. In order to reduce this level of uncertainty, users are encouraged to create age groups meeting their needs and/or to group together more than one CSD.

Effective with the May 2024 release

Census Base

Postcensal estimates are based on the 2021 Census counts adjusted for census net undercoverage and for incompletely enumerated reserves and settlements.

Census Geography

This report contains population estimates for census subdivisions (CSDs) according to the Standard Geographical Classification (SGC) 2021.

Coming Up

Next Release

January 13, 2027

Population Change by Census Subdivision for July 2026

Related Links

For more information please visit the following websites:

Statistics Canada: <https://www23.statcan.gc.ca/imdb/p2SV.pl?Function=getSurvey&SDDS=3608>

Manitoba Bureau of Statistics: <https://www.gov.mb.ca/mbs/moreinfo.html?id=17>

- ▶ Manitoba Population Estimates by Census Subdivision - Table:
https://www.gov.mb.ca/mbs/publications/manitoba_csd_total_data.xlsx

Contact: mbs@gov.mb.ca