

# Quarterly Demographic Estimates

## April 2021



### Highlights

Manitoba's total population was estimated at 1,382,904 residents as of April 1, 2021, up 1,969 individuals from the January 1, 2021 estimate. On a twelve-month basis (compared to April 1, 2020) Manitoba's population increased by 4,086 people, or 0.30%. A net outflow of interprovincial migrants over the past twelve months had a negative impact on Manitoba's growth, however, an inflow of immigrants more than offsets the loss.

#### Per '000 Population?

A **rate per thousand population** is calculated by dividing the number of events for a time period by the population at the mid-point of the period, then multiplying by 1,000. These crude rates allow for quick comparisons among characteristics or jurisdictions.

In this document, the mid-point population is the average of population estimates for the start and end of the quarter.

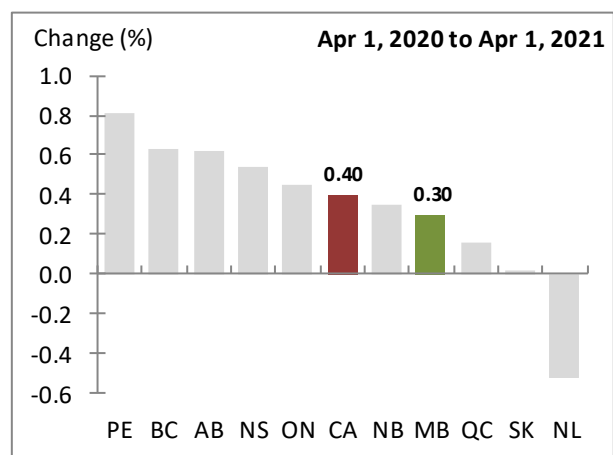
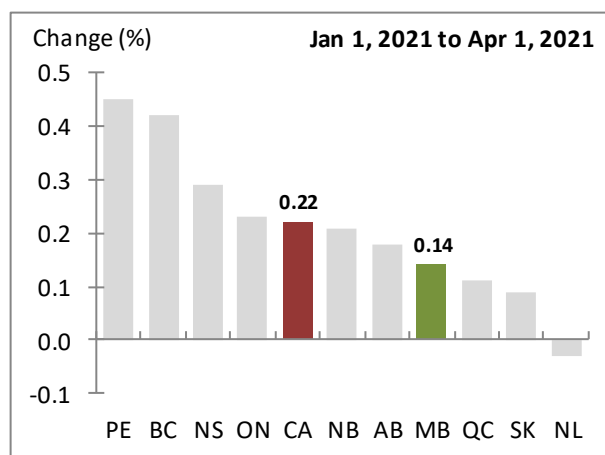
**Next Release:** September 29, 2021.

### Manitoba Quarterly Population and Demographic Estimates

Demographic Component	Estimate (Persons)	Per '000 Population
Start Population (Jan 1, 2021)	1,380,935	
<b>Natural Increase (Net)</b>	593	0.43
Births	4,067	2.94
Deaths	3,474	2.51
<b>Total Net Migration</b>	1,376	1.00
Net Interprovincial	-2,366	-1.71
In	2,310	1.67
Out	4,676	3.38
Net International	3,198	2.31
Immigration	3,386	2.45
Emigration	188	0.14
Other International	544	0.39
Net Non-permanent Residents	520	0.38
Returning Emigrants	40	0.03
Net Temporary Emigrants	16	0.01
<b>End Population (Apr 1, 2021)</b>	<b>1,382,904</b>	

Source: Statistics Canada, Tables 17-10-0009-01, 17-10-0020-01, 17-10-0040-01 and 17-10-0059-01

### Population Growth, Canada and Provinces



Source: Statistics Canada, Table 17-10-0009-01

**Statistics Canada's documentation:** <http://www23.statcan.gc.ca/imdb/p2SV.pl?Function=getSurvey&SDDS=3601>

## Population Growth

### Quarterly growth

Over the three months ending April 2021, Manitoba's population increased by an estimated 1,969 people. Our quarterly growth rate of 0.14% was weaker than Canada's 0.22%, and seventh provincially.

### Twelve-month growth

Manitoba's population increased by an estimated 4,086 people between April 2020 and April 2021. The province's twelve-month growth rate of 0.30% was weaker than Canada's 0.40%, and seventh provincially.

#### Population Estimate?

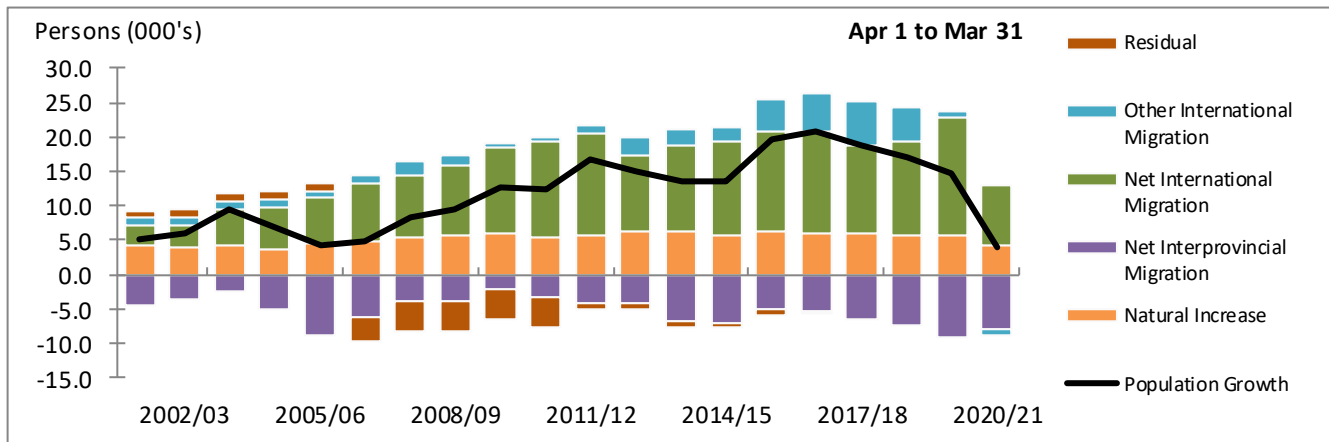
*Estimates are derived from Census counts, but are adjusted for net Census undercoverage, incompletely enumerated Indian reserves and demographic growth.*

### Population Estimates - Manitoba and Canada

	Manitoba	Canada
<b>Estimate (Persons)</b>		
Apr 1, 2020	1,378,818	37,979,854
Jan 1, 2021	1,380,935	38,048,738
Apr 1, 2021	1,382,904	38,131,104
<b>Change (Persons)</b>		
Apr 1, 2020 to Apr 1, 2021	4,086	151,250
Jan 1, 2021 to Apr 1, 2021	1,969	82,366
<b>Change (%)</b>		
Apr 1, 2020 to Apr 1, 2021	0.30	0.40
Jan 1, 2021 to Apr 1, 2021	0.14	0.22

Source: Statistics Canada, Table 17-10-0009-01

### Twelve-month Growth, Component Contributions



Source: Statistics Canada, Tables 17-10-0009-01, 17-10-0020-01, 17-10-0040-01 and 17-10-0059-01

#### Other International Migration?

**Other International migration** groups together the temporary international migration flows and is comprised of the net change in Non-permanent Residents, plus Returning Emigrants, less Net Temporary Emigrants.

#### Non-permanent Residents?

The majority of **Non-permanent Residents** are students and temporary workers, while the remainder are refugee status claimants and non-Canadian born dependents of refugee claimants or permit holders.

#### Residual?

**Residual deviation** is obtained by distributing the error of closure linearly throughout the intercensal period.

The **error of closure** is defined as the difference between the final postcensal population estimates on Census Day and the most recent Census counts (adjusted for Census net undercoverage and incompletely enumerated Indian reserves).

A **positive error of closure** means that the postcensal population estimates have overestimated the population. A **negative residual** would then be required to correct the overestimation.

## Components of Growth

### Natural Increase

During the first quarter of 2021, Manitoba recorded a gain of 593 people due to natural increase (births minus deaths). Over the twelve months ending March 31, 2021, our natural increase was 4,355 people, 23.49% lower than the twelve months prior.

### Total Net Migration

Combining all the migration components together, Manitoba had a total net inflow of 1,376 migrants during the first quarter of 2021. Our quarterly rate of 1.00 migrants per thousand population ranked sixth among provinces. Manitoba's twelve-month total net outflow was 269 migrants, 103.02% less than the previous twelve months.

### Net International Migration

During the first quarter of 2021, Manitoba gained 3,198 residents through net international migration (immigrants minus emigrants). Our quarterly inflow of 3,386 immigrants resulted in a rate of 2.45 immigrants per thousand population, above Canada's rate of 1.85 and first among provinces. During the twelve months ending March 31, 2021, Manitoba welcomed 8,988 immigrants, 51.94% fewer than the twelve months prior.

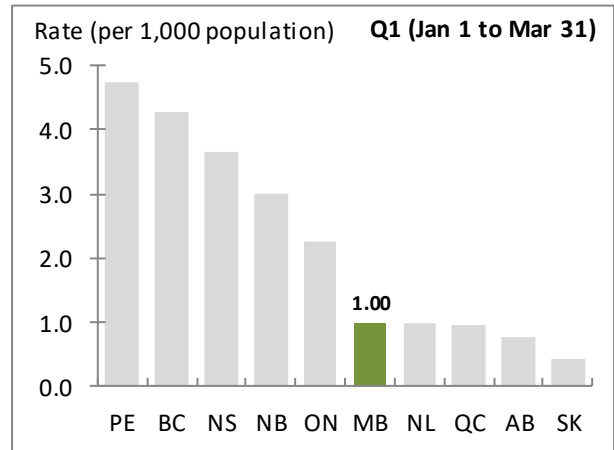
### Other International Migration

Manitoba experienced a net gain of 544 other international migrants during the first quarter of 2021, resulting in a rate of 0.39 migrants per thousand population. Our net decrease of 801 migrants between April 1, 2020 and March 31, 2021 was 207.81% lower than the net figure for the preceding twelve months.

### Net Interprovincial Migration

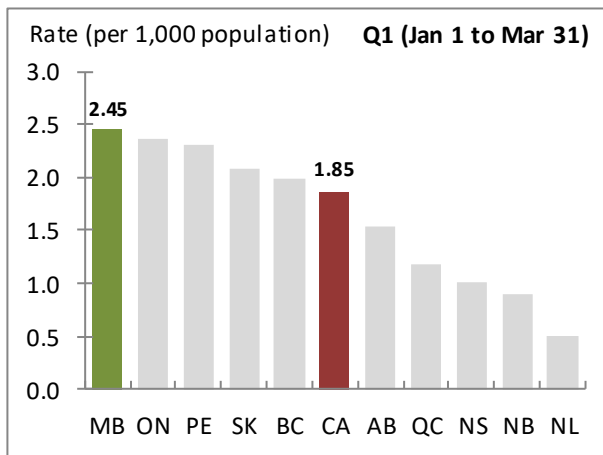
Manitoba had a net interprovincial outflow of 2,366 migrants during the first quarter of 2021. Our quarterly rate of -1.71 migrants per thousand population ranked ninth among provinces. The province's twelve-month net interprovincial outflow was 7,954 migrants, compared to the net outflow of 9,066 migrants for the previous twelve months.

### Quarterly Total Net Migration Rate



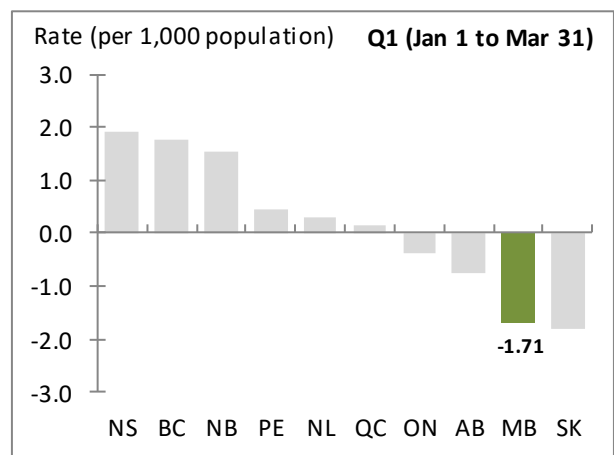
Source: Statistics Canada, Tables 17-10-0009-01, 17-10-0020-01, 17-10-0023-01 and 17-10-0040-01

### Quarterly Immigration Rate



Source: Statistics Canada, Tables 17-10-0009-01 and 17-10-0040-01

### Quarterly Net Interprovincial Migration Rate



Source: Statistics Canada, Tables 17-10-0009-01 and 17-10-0020-01

**Gains and Losses?**

Manitoba is considered to have a **net gain** when the number of people moving in from a given province or territory is greater than the number moving out, otherwise the **net interchange** is considered to be a **loss**.

*Example:* Say 28 people moved from Manitoba to Ontario and, over the same time period, 10 people moved from Ontario to Manitoba. Our resulting net interchange with Ontario would be a loss of 18 people.

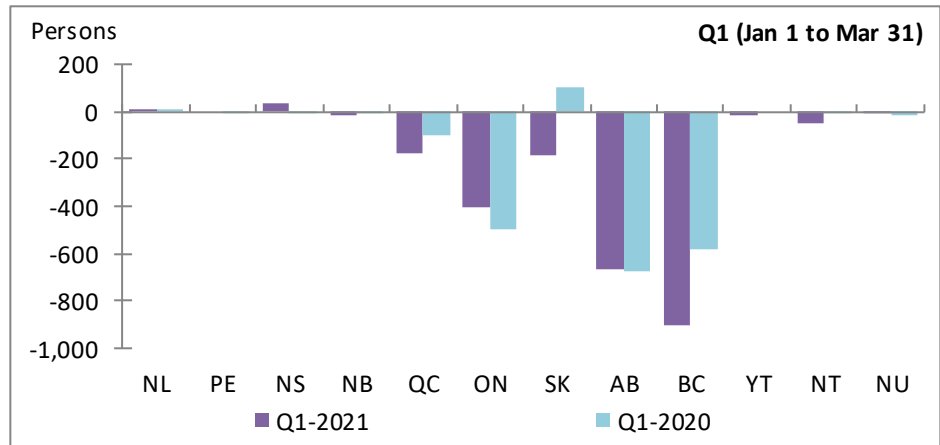
**Manitoba Net Interprovincial Migration - Gains and Losses**

	Q1-2021 (1)	Q1-2020 (2)	Change (1)-(2)	Q2-2020 to Q1-2021 (3)	Q2-2019 to Q1-2020 (4)	Change (3)-(4)
NL	9	4	5 ↑	71	-28	99 ↑
PE	0	-5	5 ↑	-25	-2	-23 ↓
NS	38	-2	40 ↑	-123	-121	-2 ↓
NB	-15	-5	-10 ↓	-72	-42	-30 ↓
QC	-175	-102	-73 ↓	-412	-508	96 ↑
ON	-407	-501	94 ↑	-2,151	-3,302	1,151 ↑
SK	-185	106	-291 ↓	-169	15	-184 ↓
AB	-670	-672	2 ↑	-2,502	-2,385	-117 ↓
BC	-904	-580	-324 ↓	-2,542	-2,631	89 ↑
YT	-10	0	-10 ↓	-4	-34	30 ↑
NT	-45	-5	-40 ↓	-46	-4	-42 ↓
NU	-2	-17	15 ↑	21	-24	45 ↑
<b>TOTAL</b>	<b>-2,366</b>	<b>-1,779</b>	<b>-587 ↓</b>	<b>-7,954</b>	<b>-9,066</b>	<b>1,112 ↑</b>

**Gains and Losses: Quarterly**

During the first quarter of 2021, Manitoba had net migration gains from two jurisdictions. The largest net interprovincial inflow was from Nova Scotia, while the largest outflow was to British Columbia.

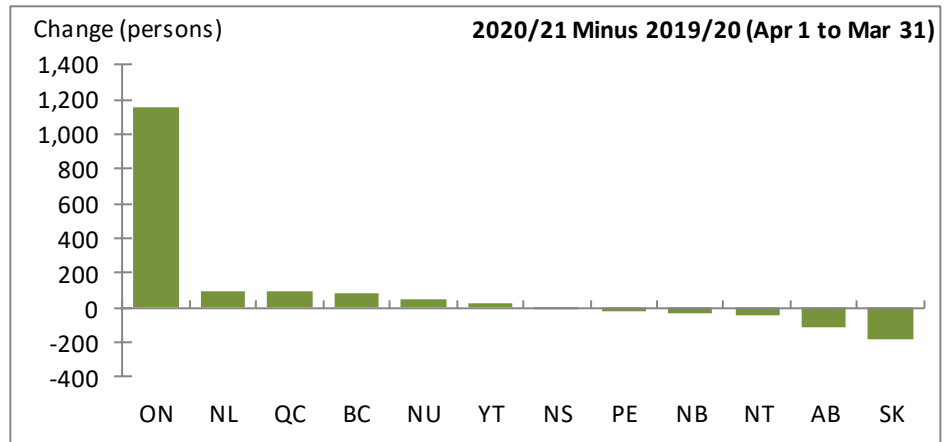
Compared to the same quarter twelve months ago, Manitoba's net interchange has improved with six jurisdictions.



**Twelve-month**

Over the twelve months ending March 31, 2021, Manitoba had net migration gains from two jurisdictions. The largest net interprovincial migration inflow was from Newfoundland, while the largest outflow was to British Columbia.

Compared to the previous twelve month period, Manitoba's net interchange has improved with six jurisdictions.

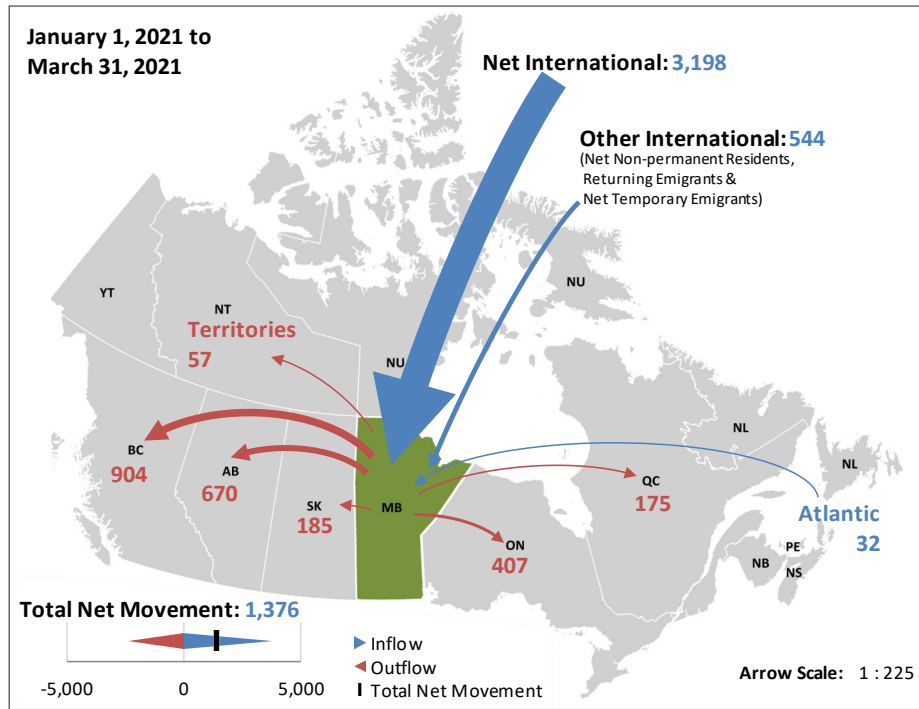


Source: Statistics Canada, Table 17-10-0045-01

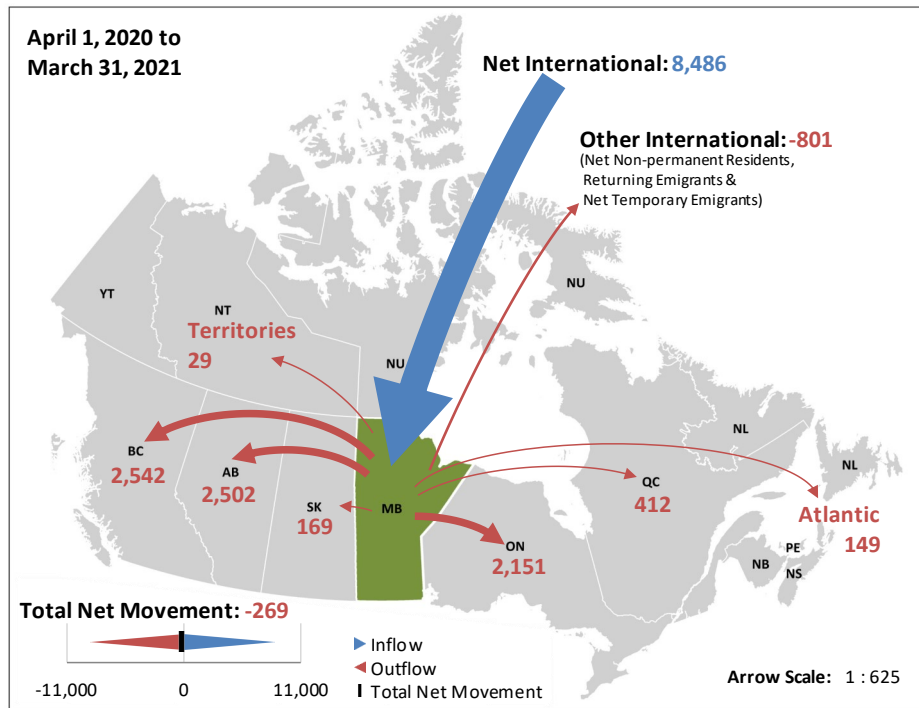
Contact: Manitoba Bureau of Statistics [mbs@gov.mb.ca](mailto:mbs@gov.mb.ca)  
 MBS public website: <https://www.gov.mb.ca/mbs/moreinfo.html?id=16>

Manitoba Net Migration - Gains and Losses

Current Quarter



Current Twelve-month period



Note: Arrows are scaled, on a per chart basis, to reflect the relative net migration between Manitoba and other jurisdictions.

Source: Statistics Canada, Tables 17-10-0040-01 and 17-10-0045-01

## Appendix Tables

## Comparability over time?

Estimates of population and demographic components may not be fully comparable over time due to seasonal effects, changes in methodologies and completeness of source data.

## Manitoba Population and Demographic Estimates - 12-month (Persons)

Apr 1 to Mar 31	Start Population	Natural Increase	Migration				Component Growth	Residual	Population Growth	End Population
			Net Interprovincial	Net International	Other International	Total Net				
2001/02	1,149,684	4,310	-4,296	2,997	965	-334	3,976	1,077	5,053	1,154,737
2002/03	1,154,737	3,963	-3,455	3,079	1,343	967	4,930	1,196	6,126	1,160,863
2003/04	1,160,863	4,139	-2,392	5,335	1,203	4,146	8,285	1,199	9,484	1,170,347
2004/05	1,170,347	3,749	-5,087	6,178	902	1,993	5,742	1,196	6,938	1,177,285
2005/06	1,177,285	4,479	-8,868	6,674	868	-1,326	3,153	1,197	4,350	1,181,635
2006/07	1,181,635	4,778	-6,132	8,528	1,241	3,637	8,415	-3,620	4,795	1,186,430
2007/08	1,186,430	5,470	-3,823	9,001	1,893	7,071	12,541	-4,309	8,232	1,194,662
2008/09	1,194,662	5,634	-3,819	10,231	1,602	8,014	13,648	-4,296	9,352	1,204,014
2009/10	1,204,014	6,003	-2,098	12,424	564	10,890	16,893	-4,297	12,596	1,216,610
2010/11	1,216,610	5,397	-3,281	14,032	602	11,353	16,750	-4,297	12,453	1,229,063
2011/12	1,229,063	5,795	-4,038	14,593	1,390	11,945	17,740	-1,111	16,629	1,245,692
2012/13	1,245,692	6,197	-4,177	11,158	2,692	9,673	15,870	-728	15,142	1,260,834
2013/14	1,260,834	6,160	-6,761	12,638	2,264	8,141	14,301	-728	13,573	1,274,407
2014/15	1,274,407	5,704	-6,976	13,787	1,900	8,711	14,415	-728	13,687	1,288,094
2015/16	1,288,094	6,403	-5,009	14,368	4,563	13,922	20,325	-730	19,595	1,307,689
2016/17	1,307,689	5,927	-5,424	14,779	5,519	14,874	20,801	-78	20,723	1,328,412
2017/18	1,328,412	6,069	-6,431	12,720	6,285	12,574	18,643	0	18,643	1,347,055
2018/19	1,347,055	5,800	-7,211	13,560	5,019	11,368	17,168	0	17,168	1,364,223
2019/20	1,364,223	5,692	-9,066	17,226	743	8,903	14,595	0	14,595	1,378,818
2020/21	1,378,818	4,355	-7,954	8,486	-801	-269	4,086	0	4,086	1,382,904
2021/22	1,382,904									

Source: Statistics Canada, Tables 17-10-0009-01, 17-10-0020-01, 17-10-0040-01 and 17-10-0059-01

## Manitoba Population and Demographic Estimates - Quarterly (Persons)

Start of Quarter	Start Population	Natural Increase	Migration				Component Growth	Residual	Population Growth	End Population
			Net Interprovincial	Net International	Other International	Total Net				
Apr 1, 2016	1,307,689	1,567	-1,657	4,933	1,685	4,961	6,528	-78	6,450	1,314,139
Jul 1, 2016	1,314,139	1,983	-2,293	3,688	2,394	3,789	5,772	0	5,772	1,319,911
Oct 1, 2016	1,319,911	1,310	-588	2,584	912	2,908	4,218	0	4,218	1,324,129
Jan 1, 2017	1,324,129	1,067	-886	3,574	528	3,216	4,283	0	4,283	1,328,412
Apr 1, 2017	1,328,412	1,574	-1,357	4,199	1,962	4,804	6,378	0	6,378	1,334,790
Jul 1, 2017	1,334,790	1,943	-1,945	3,276	2,501	3,832	5,775	0	5,775	1,340,565
Oct 1, 2017	1,340,565	1,393	-1,354	2,070	1,744	2,460	3,853	0	3,853	1,344,418
Jan 1, 2018	1,344,418	1,159	-1,775	3,175	78	1,478	2,637	0	2,637	1,347,055
Apr 1, 2018	1,347,055	1,701	-2,074	4,171	1,972	4,069	5,770	0	5,770	1,352,825
Jul 1, 2018	1,352,825	1,894	-2,230	3,398	1,992	3,160	5,054	0	5,054	1,357,879
Oct 1, 2018	1,357,879	1,286	-1,409	2,999	877	2,467	3,753	0	3,753	1,361,632
Jan 1, 2019	1,361,632	919	-1,498	2,992	178	1,672	2,591	0	2,591	1,364,223
Apr 1, 2019	1,364,223	1,564	-2,214	5,037	930	3,753	5,317	0	5,317	1,369,540
Jul 1, 2019	1,369,540	1,793	-3,276	5,645	-128	2,241	4,034	0	4,034	1,373,574
Oct 1, 2019	1,373,574	1,236	-1,797	3,733	258	2,194	3,430	0	3,430	1,377,004
Jan 1, 2020	1,377,004	1,099	-1,779	2,811	-317	715	1,814	0	1,814	1,378,818
Apr 1, 2020	1,378,818	1,443	-1,837	1,459	-620	-998	445	0	445	1,379,263
Jul 1, 2020	1,379,263	1,731	-1,895	2,141	-1,771	-1,525	206	0	206	1,379,469
Oct 1, 2020	1,379,469	588	-1,856	1,688	1,046	878	1,466	0	1,466	1,380,935
Jan 1, 2021	1,380,935	593	-2,366	3,198	544	1,376	1,969	0	1,969	1,382,904
Apr 1, 2021	1,382,904									

Source: Statistics Canada, Tables 17-10-0009-01, 17-10-0020-01, 17-10-0040-01 and 17-10-0059-01

June 17, 2021

Manitoba Bureau of Statistics  
Finance Policy & Legislation

