

# Quarterly Demographic Estimates

## October 2021



### Highlights

Manitoba's total population was estimated at 1,386,333 residents as of October 1, 2021, up 2,568 individuals from the July 1, 2021 estimate. On a twelve-month basis (compared to October 1, 2020) Manitoba's population increased by 5,886 people, or 0.43%. A net outflow of interprovincial migrants over the past twelve months had a negative impact on Manitoba's growth, however, an inflow of immigrants helped to offset the loss.

#### Per '000 Population?

A **rate per thousand population** is calculated by dividing the number of events for a time period by the population at the mid-point of the period, then multiplying by 1,000. These crude rates allow for quick comparisons among characteristics or jurisdictions.

In this document, the mid-point population is the average of population estimates for the start and end of the quarter.

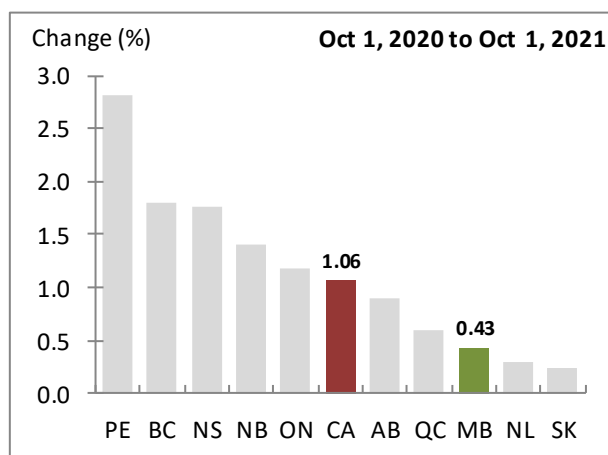
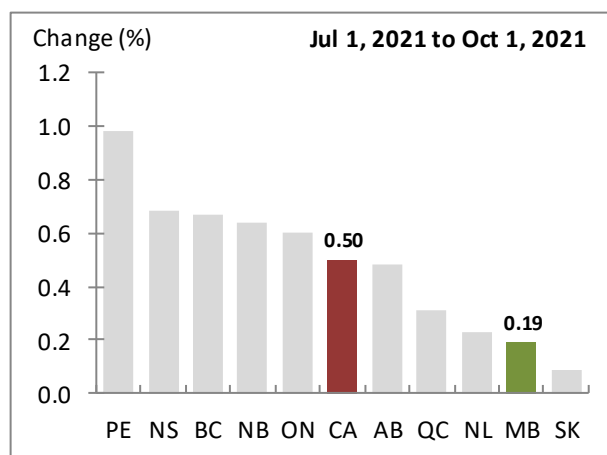
**Next Release:** March 17, 2021.

### Manitoba Quarterly Population and Demographic Estimates

Demographic Component	Estimate (Persons)	Per '000 Population
Start Population (Jul 1, 2021)	1,383,765	
<b>Natural Increase (Net)</b>	1,311	0.95
Births	4,120	2.97
Deaths	2,809	2.03
<b>Total Net Migration</b>	1,257	0.91
Net Interprovincial	-3,877	-2.80
In	2,756	1.99
Out	6,633	4.79
Net International	4,219	3.05
Immigration	4,692	3.39
Emigration	473	0.34
Other International	915	0.66
Net Non-permanent Residents	786	0.57
Returning Emigrants	224	0.16
Net Temporary Emigrants	95	0.07
<b>End Population (Oct 1, 2021)</b>	<b>1,386,333</b>	

Source: Statistics Canada, Tables 17-10-0009-01, 17-10-0020-01, 17-10-0040-01 and 17-10-0059-01

### Population Growth, Canada and Provinces



Source: Statistics Canada, Table 17-10-0009-01

**Statistics Canada's documentation:** <http://www23.statcan.gc.ca/imdb/p2SV.pl?Function=getSurvey&SDDS=3601>

## Population Growth

### Quarterly growth

Over the three months ending October 2021, Manitoba's population increased by an estimated 2,568 people. Our quarterly growth rate of 0.19% was weaker than Canada's 0.50%, and ninth provincially.

### Twelve-month growth

Manitoba's population increased by an estimated 5,886 people between October 2020 and October 2021. The province's twelve-month growth rate of 0.43% was weaker than Canada's 1.06%, and eighth provincially.

#### Population Estimate?

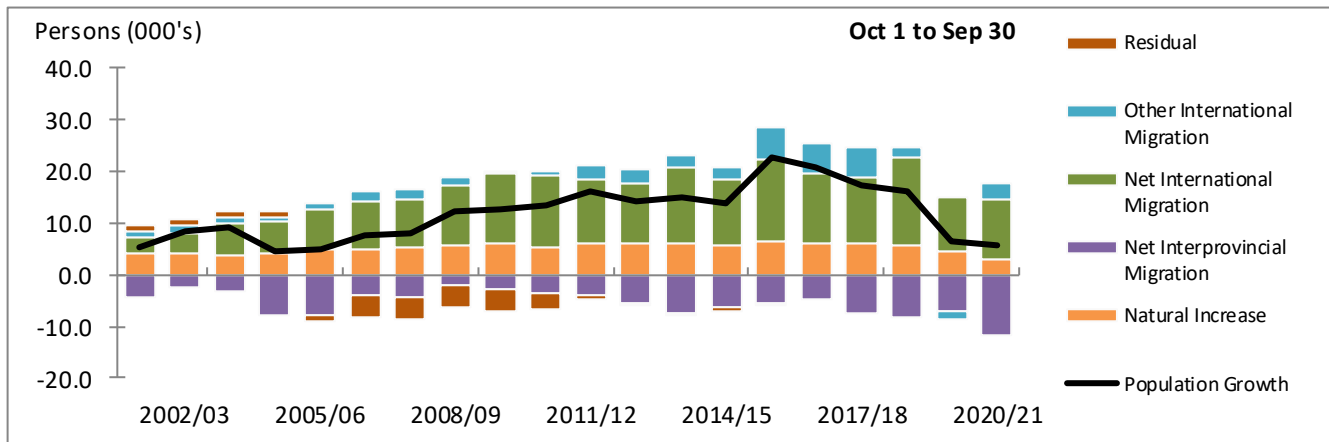
Estimates are derived from Census counts, but are adjusted for net Census undercoverage, incompletely enumerated Indian reserves and demographic growth.

### Population Estimates - Manitoba and Canada

	Manitoba	Canada
<b>Estimate (Persons)</b>		
Oct 1, 2020	1,380,447	38,033,014
Jul 1, 2021	1,383,765	38,246,108
Oct 1, 2021	1,386,333	38,436,447
<b>Change (Persons)</b>		
Oct 1, 2020 to Oct 1, 2021	5,886	403,433
Jul 1, 2021 to Oct 1, 2021	2,568	190,339
<b>Change (%)</b>		
Oct 1, 2020 to Oct 1, 2021	0.43	1.06
Jul 1, 2021 to Oct 1, 2021	0.19	0.50

Source: Statistics Canada, Table 17-10-0009-01

### Twelve-month Growth, Component Contributions



Source: Statistics Canada, Tables 17-10-0009-01, 17-10-0020-01, 17-10-0040-01 and 17-10-0059-01

#### Other International Migration?

**Other International migration** groups together the temporary international migration flows and is comprised of the net change in Non-permanent Residents, plus Returning Emigrants, less Net Temporary Emigrants.

#### Non-permanent Residents?

The majority of **Non-permanent Residents** are students and temporary workers, while the remainder are refugee status claimants and non-Canadian born dependents of refugee claimants or permit holders.

#### Residual?

**Residual deviation** is obtained by distributing the error of closure linearly throughout the intercensal period.

The **error of closure** is defined as the difference between the final postcensal population estimates on Census Day and the most recent Census counts (adjusted for Census net undercoverage and incompletely enumerated Indian reserves).

A **positive error of closure** means that the postcensal population estimates have overestimated the population. A **negative residual** would then be required to correct the overestimation.

## Components of Growth

### Natural Increase

During the third quarter of 2021, Manitoba recorded a gain of 1,311 people due to natural increase (births minus deaths). Over the twelve months ending September 30, 2021, our natural increase was 2,924 people, 35.42% lower than the twelve months prior.

### Total Net Migration

Combining all the migration components together, Manitoba had a total net inflow of 1,257 migrants during the third quarter of 2021. Our quarterly rate of 0.91 migrants per thousand population ranked ninth among provinces. Manitoba's twelve-month total net inflow was 2,962 migrants, 61.15% more than the previous twelve months.

### Net International Migration

During the third quarter of 2021, Manitoba gained 4,219 residents through net international migration (immigrants minus emigrants). Our quarterly inflow of 4,692 immigrants resulted in a rate of 3.39 immigrants per thousand population, above Canada's rate of 3.20 and fourth among provinces. During the twelve months ending September 30, 2021, Manitoba welcomed 12,636 immigrants, 16.05% more than the twelve months prior.

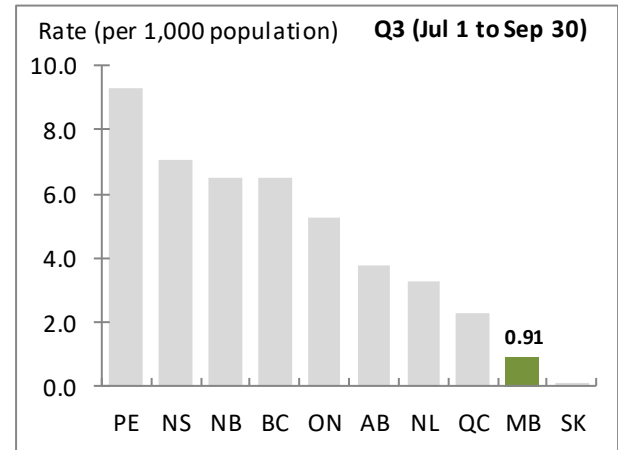
### Other International Migration

Manitoba experienced a net gain of 915 other international migrants during the third quarter of 2021, resulting in a rate of 0.66 migrants per thousand population. Our net increase of 3,129 migrants between October 1, 2020 and September 30, 2021 was a reversal from the net outflow of 1,547 migrants for the previous twelve months.

### Net Interprovincial Migration

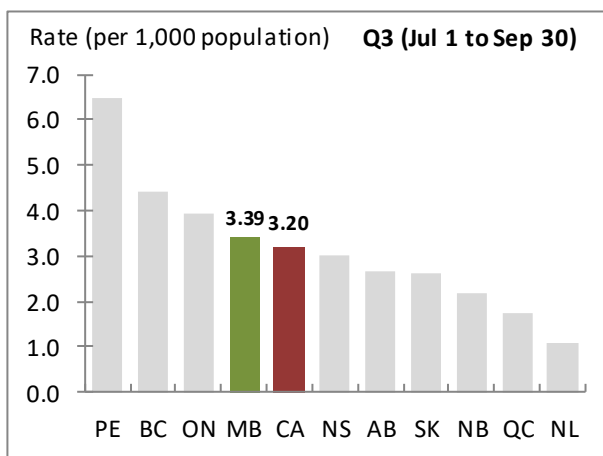
Manitoba had a net interprovincial outflow of 3,877 migrants during the third quarter of 2021. Our quarterly rate of -2.80 migrants per thousand population ranked ninth among provinces. The province's twelve-month net interprovincial outflow was 11,727 migrants, 69.88% more than the net figure for the preceding twelve months.

### Quarterly Total Net Migration Rate



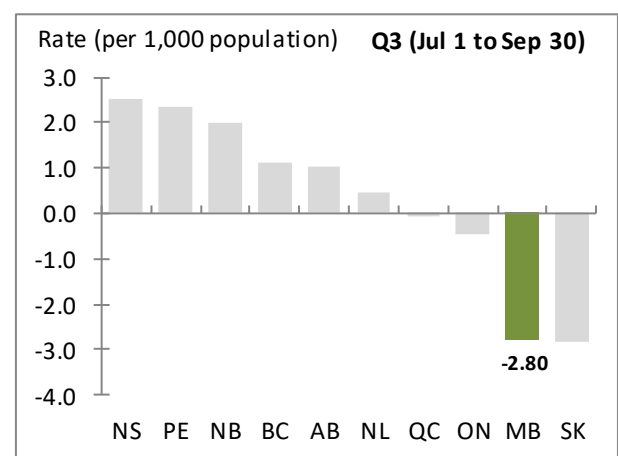
Source: Statistics Canada, Tables 17-10-0009-01, 17-10-0020-01, 17-10-0023-01 and 17-10-0040-01

### Quarterly Immigration Rate



Source: Statistics Canada, Tables 17-10-0009-01 and 17-10-0040-01

### Quarterly Net Interprovincial Migration Rate



Source: Statistics Canada, Tables 17-10-0009-01 and 17-10-0020-01

**Gains and Losses?**

Manitoba is considered to have a **net gain** when the number of people moving in from a given province or territory is greater than the number moving out, otherwise the **net interchange** is considered to be a **loss**.

*Example:* Say 28 people moved from Manitoba to Ontario and, over the same time period, 10 people moved from Ontario to Manitoba. Our resulting net interchange with Ontario would be a loss of 18 people.

**Manitoba Net Interprovincial Migration - Gains and Losses**

	Q3-2021 (1)	Q3-2020 (2)	Change (1)-(2)	Q4-2020 to Q3-2021 (3)	Q4-2019 to Q3-2020 (4)	Change (3)-(4)
NL	-4	34	-38 ↓	7	61	-54 ↓
PE	0	-13	13 ↑	42	-27	69 ↑
NS	-10	-44	34 ↑	-206	-172	-34 ↓
NB	-78	-23	-55 ↓	-265	-85	-180 ↓
QC	-180	-71	-109 ↓	-439	-173	-266 ↓
ON	-855	-665	-190 ↓	-2,487	-2,200	-287 ↓
SK	-63	118	-181 ↓	-412	378	-790 ↓
AB	-1,461	-593	-868 ↓	-3,771	-2,303	-1,468 ↓
BC	-1,193	-599	-594 ↓	-4,217	-2,322	-1,895 ↓
YT	-8	-4	-4 ↓	14	-4	18 ↑
NT	0	7	-7 ↓	-31	-47	16 ↑
NU	-25	18	-43 ↓	38	-9	47 ↑
<b>TOTAL</b>	<b>-3,877</b>	<b>-1,835</b>	<b>-2,042 ↓</b>	<b>-11,727</b>	<b>-6,903</b>	<b>-4,824 ↓</b>

**Gains and Losses:  
Quarterly**

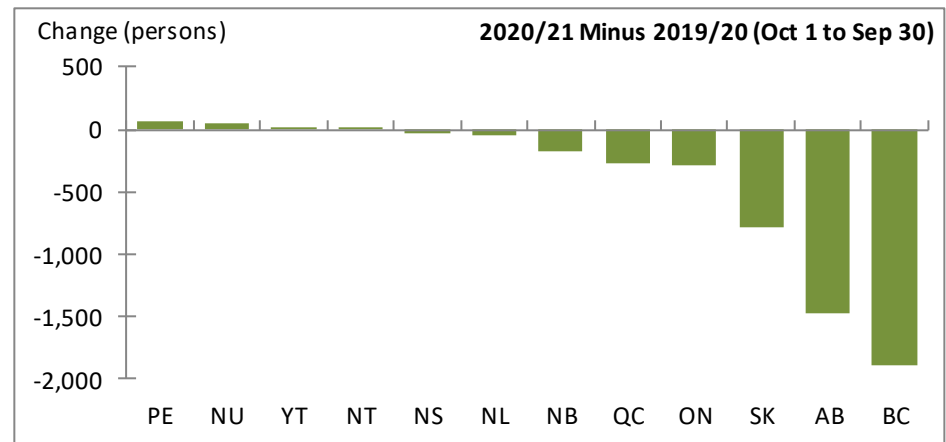
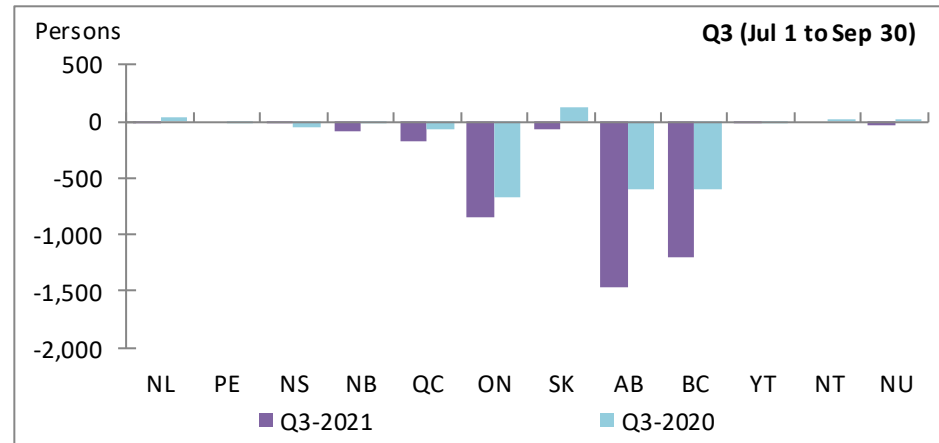
During the third quarter of 2021, Manitoba had net migration gains from no jurisdiction. The largest net interprovincial outflow was to Alberta.

Compared to the same quarter twelve months ago, Manitoba's net interchange has improved with two jurisdictions.

**Twelve-month**

Over the twelve months ending September 30, 2021, Manitoba had net migration gains from four jurisdictions. The largest net interprovincial migration inflow was from Prince Edward Island, while the largest outflow was to British Columbia.

Compared to the previous twelve month period, Manitoba's net interchange has improved with four jurisdictions.



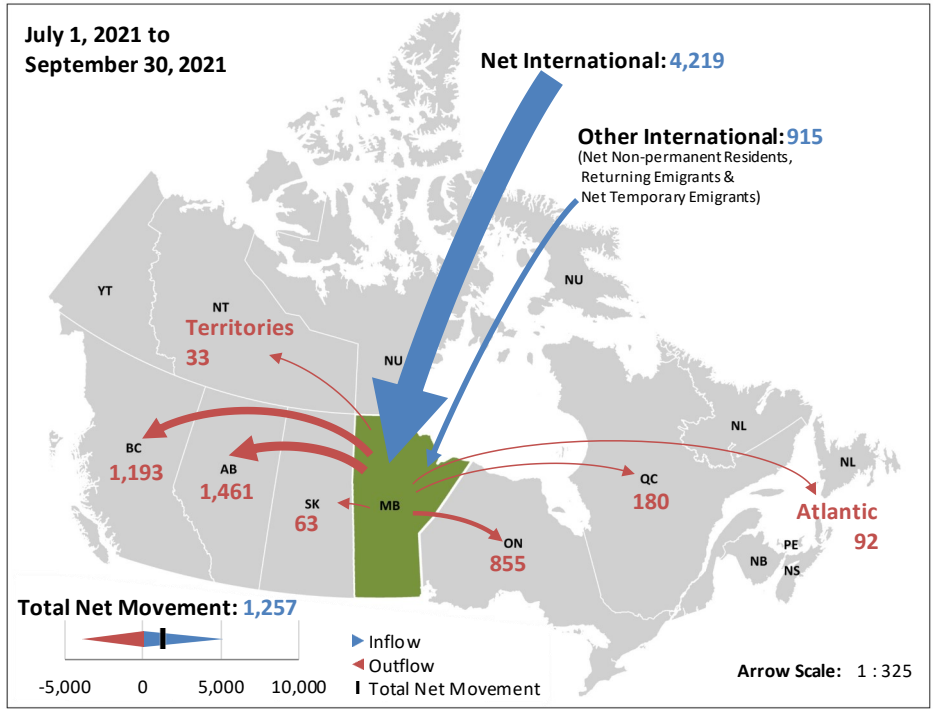
Source: Statistics Canada, Table 17-10-0045-01

Contact: Manitoba Bureau of Statistics [mbs@gov.mb.ca](mailto:mbs@gov.mb.ca)

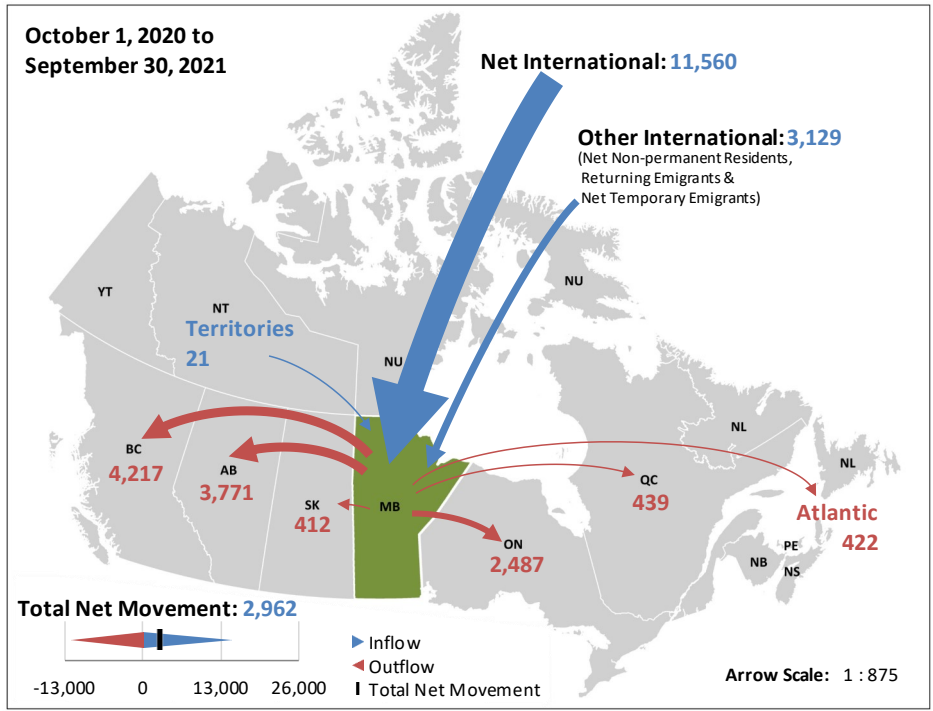
MBS public website: <https://www.gov.mb.ca/mbs/moreinfo.html?id=16>

Manitoba Net Migration - Gains and Losses

Current Quarter



Current Twelve-month period



Note: Arrows are scaled, on a per chart basis, to reflect the relative net migration between Manitoba and other jurisdictions.

Source: Statistics Canada, Tables 17-10-0040-01 and 17-10-0045-01

## Appendix Tables

## Comparability over time?

Estimates of population and demographic components may not be fully comparable over time due to seasonal effects, changes in methodologies and completeness of source data.

## Manitoba Population and Demographic Estimates - 12-month (Persons)

Oct 1 to Sep 30	Start Population	Natural Increase	Migration				Component Growth	Residual	Population Growth	End Population
			Net Interprovincial	Net International	Other International	Total Net				
2001/02	1,152,150	4,034	-4,514	3,320	1,111	-83	3,951	1,197	5,148	1,157,298
2002/03	1,157,298	4,035	-2,353	4,151	1,203	3,001	7,036	1,196	8,232	1,165,530
2003/04	1,165,530	3,936	-3,305	6,063	1,252	4,010	7,946	1,199	9,145	1,174,675
2004/05	1,174,675	4,098	-7,757	6,368	506	-883	3,215	1,196	4,411	1,179,086
2005/06	1,179,086	4,876	-7,976	7,667	1,209	900	5,776	-881	4,895	1,183,981
2006/07	1,183,981	5,033	-4,031	9,163	1,840	6,972	12,005	-4,296	7,709	1,191,690
2007/08	1,191,690	5,363	-4,189	9,266	1,727	6,804	12,167	-4,309	7,858	1,199,548
2008/09	1,199,548	5,789	-2,108	11,703	1,240	10,835	16,624	-4,297	12,327	1,211,875
2009/10	1,211,875	5,960	-2,834	13,604	353	11,123	17,083	-4,296	12,787	1,224,662
2010/11	1,224,662	5,330	-3,736	14,031	621	10,916	16,246	-2,889	13,357	1,238,019
2011/12	1,238,019	6,231	-4,092	12,307	2,443	10,658	16,889	-730	16,159	1,254,178
2012/13	1,254,178	6,258	-5,362	11,393	2,689	8,720	14,978	-728	14,250	1,268,428
2013/14	1,268,428	6,021	-7,275	14,584	2,336	9,645	15,666	-728	14,938	1,283,366
2014/15	1,283,366	5,736	-6,187	12,791	2,351	8,955	14,691	-728	13,963	1,297,329
2015/16	1,297,329	6,394	-5,531	15,863	6,299	16,631	23,025	-443	22,582	1,319,911
2016/17	1,319,911	5,894	-4,776	13,633	5,903	14,760	20,654	0	20,654	1,340,565
2017/18	1,340,565	6,147	-7,433	12,885	5,804	11,256	17,403	0	17,403	1,357,968
2018/19	1,357,968	5,712	-8,350	16,969	1,782	10,401	16,113	0	16,113	1,374,081
2019/20	1,374,081	4,528	-6,903	10,288	-1,547	1,838	6,366	0	6,366	1,380,447
2020/21	1,380,447	2,924	-11,727	11,560	3,129	2,962	5,886	0	5,886	1,386,333
2021/22	1,386,333									

Source: Statistics Canada, Tables 17-10-0009-01, 17-10-0020-01, 17-10-0040-01 and 17-10-0059-01

## Manitoba Population and Demographic Estimates - Quarterly (Persons)

Start of Quarter	Start Population	Natural Increase	Migration				Component Growth	Residual	Population Growth	End Population
			Net Interprovincial	Net International	Other International	Total Net				
Oct 1, 2016	1,319,911	1,310	-588	2,584	912	2,908	4,218	0	4,218	1,324,129
Jan 1, 2017	1,324,129	1,067	-886	3,574	528	3,216	4,283	0	4,283	1,328,412
Apr 1, 2017	1,328,412	1,574	-1,357	4,199	1,962	4,804	6,378	0	6,378	1,334,790
Jul 1, 2017	1,334,790	1,943	-1,945	3,276	2,501	3,832	5,775	0	5,775	1,340,565
Oct 1, 2017	1,340,565	1,393	-1,354	2,070	1,744	2,460	3,853	0	3,853	1,344,418
Jan 1, 2018	1,344,418	1,159	-1,775	3,175	78	1,478	2,637	0	2,637	1,347,055
Apr 1, 2018	1,347,055	1,701	-2,074	4,171	1,972	4,069	5,770	0	5,770	1,352,825
Jul 1, 2018	1,352,825	1,894	-2,230	3,469	2,010	3,249	5,143	0	5,143	1,357,968
Oct 1, 2018	1,357,968	1,286	-1,409	3,146	829	2,566	3,852	0	3,852	1,361,820
Jan 1, 2019	1,361,820	1,196	-1,498	3,003	146	1,651	2,847	0	2,847	1,364,667
Apr 1, 2019	1,364,667	1,490	-2,214	5,103	908	3,797	5,287	0	5,287	1,369,954
Jul 1, 2019	1,369,954	1,740	-3,229	5,717	-101	2,387	4,127	0	4,127	1,374,081
Oct 1, 2019	1,374,081	1,136	-1,753	3,882	232	2,361	3,497	0	3,497	1,377,578
Jan 1, 2020	1,377,578	939	-1,642	2,811	49	1,218	2,157	0	2,157	1,379,735
Apr 1, 2020	1,379,735	1,178	-1,673	1,454	-46	-265	913	0	913	1,380,648
Jul 1, 2020	1,380,648	1,275	-1,835	2,141	-1,782	-1,476	-201	0	-201	1,380,447
Oct 1, 2020	1,380,447	60	-1,839	1,770	1,021	952	1,012	0	1,012	1,381,459
Jan 1, 2021	1,381,459	696	-2,398	3,193	688	1,483	2,179	0	2,179	1,383,638
Apr 1, 2021	1,383,638	857	-3,613	2,378	505	-730	127	0	127	1,383,765
Jul 1, 2021	1,383,765	1,311	-3,877	4,219	915	1,257	2,568	0	2,568	1,386,333
Oct 1, 2021	1,386,333									

Source: Statistics Canada, Tables 17-10-0009-01, 17-10-0020-01, 17-10-0040-01 and 17-10-0059-01

December 16, 2021

Manitoba Bureau of Statistics  
Finance Policy & Legislation

