

Quarterly Demographic Estimates

January 2022



Highlights

Manitoba's total population was estimated at 1,390,249 residents as of January 1, 2022, up 3,916 individuals from the October 1, 2021 estimate. On a twelve-month basis (compared to January 1, 2021) Manitoba's population increased by 8,790 people, or 0.64%. A net outflow of interprovincial migrants over the past twelve months had a negative impact on Manitoba's growth, however, an inflow of immigrants more than offsets the loss.

Per '000 Population?

A **rate per thousand population** is calculated by dividing the number of events for a time period by the population at the mid-point of the period, then multiplying by 1,000. These crude rates allow for quick comparisons among characteristics or jurisdictions.

In this document, the mid-point population is the average of population estimates for the start and end of the quarter.

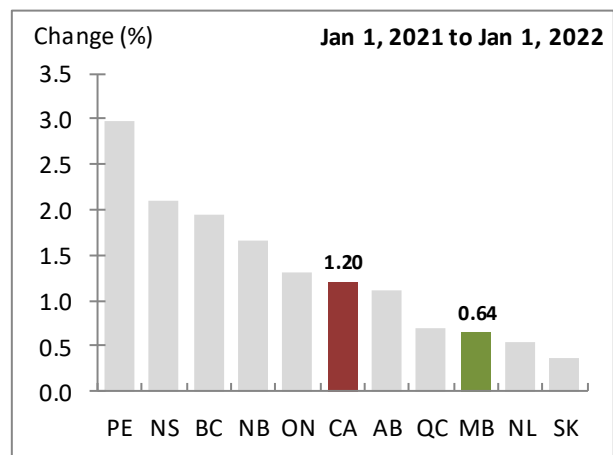
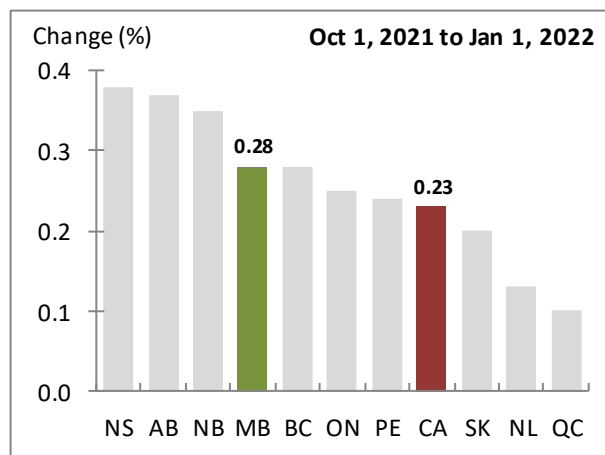
Next Release: June 22, 2022.

Manitoba Quarterly Population and Demographic Estimates

Demographic Component	Estimate (Persons)	Per '000 Population
Start Population (Oct 1, 2021)	1,386,333	
Natural Increase (Net)	673	0.48
Births	3,888	2.80
Deaths	3,215	2.32
Total Net Migration	3,243	2.34
Net Interprovincial	-2,641	-1.90
In	1,574	1.13
Out	4,215	3.04
Net International	5,424	3.91
Immigration	5,850	4.21
Emigration	426	0.31
Other International	460	0.33
Net Non-permanent Residents	398	0.29
Returning Emigrants	114	0.08
Net Temporary Emigrants	52	0.04
End Population (Jan 1, 2022)	1,390,249	

Source: Statistics Canada, Tables 17-10-0009-01, 17-10-0020-01, 17-10-0040-01 and 17-10-0059-01

Population Growth, Canada and Provinces



Source: Statistics Canada, Table 17-10-0009-01

Statistics Canada's documentation: <http://www23.statcan.gc.ca/imdb/p2SV.pl?Function=getSurvey&SDDS=3601>

Population Growth

Quarterly growth

Over the three months ending January 2022, Manitoba's population increased by an estimated 3,916 people. Our quarterly growth rate of 0.28% was stronger than Canada's 0.23%, and fourth provincially.

Twelve-month growth

Manitoba's population increased by an estimated 8,790 people between January 2021 and January 2022. The province's twelve-month growth rate of 0.64% was weaker than Canada's 1.20%, and eighth provincially.

Population Estimate?

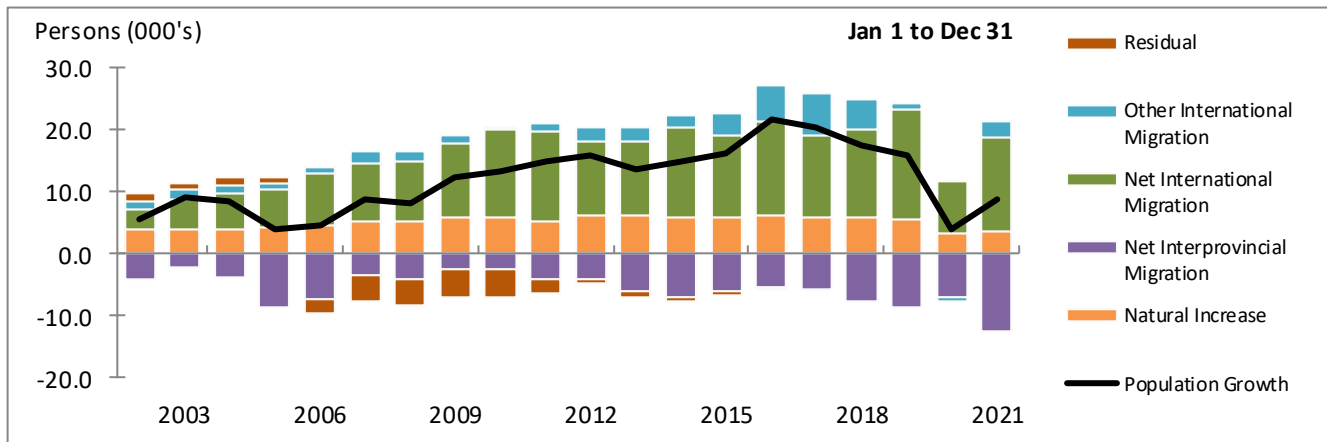
Estimates are derived from Census counts, but are adjusted for net Census undercoverage, incompletely enumerated Indian reserves and demographic growth.

Population Estimates - Manitoba and Canada

	Manitoba	Canada
Estimate (Persons)		
Jan 1, 2021	1,381,459	38,068,872
Oct 1, 2021	1,386,333	38,436,447
Jan 1, 2022	1,390,249	38,526,760
Change (Persons)		
Jan 1, 2021 to Jan 1, 2022	8,790	457,888
Oct 1, 2021 to Jan 1, 2022	3,916	90,313
Change (%)		
Jan 1, 2021 to Jan 1, 2022	0.64	1.20
Oct 1, 2021 to Jan 1, 2022	0.28	0.23

Source: Statistics Canada, Table 17-10-0009-01

Twelve-month Growth, Component Contributions



Source: Statistics Canada, Tables 17-10-0009-01, 17-10-0020-01, 17-10-0040-01 and 17-10-0059-01

Other International Migration?

Other International migration groups together the temporary international migration flows and is comprised of the net change in Non-permanent Residents, plus Returning Emigrants, less Net Temporary Emigrants.

Non-permanent Residents?

The majority of **Non-permanent Residents** are students and temporary workers, while the remainder are refugee status claimants and non-Canadian born dependents of refugee claimants or permit holders.

Residual?

Residual deviation is obtained by distributing the error of closure linearly throughout the intercensal period.

The **error of closure** is defined as the difference between the final postcensal population estimates on Census Day and the most recent Census counts (adjusted for Census net undercoverage and incompletely enumerated Indian reserves).

A **positive error of closure** means that the postcensal population estimates have overestimated the population. A **negative residual** would then be required to correct the overestimation.

Components of Growth

Natural Increase

During the fourth quarter of 2021, Manitoba recorded a gain of 673 people due to natural increase (births minus deaths). Over the twelve months ending December 31, 2021, our natural increase was 3,537 people, 2.46% higher than the twelve months prior.

Total Net Migration

Combining all the migration components together, Manitoba had a total net inflow of 3,243 migrants during the fourth quarter of 2021. Our quarterly rate of 2.34 migrants per thousand population ranked seventh among provinces. Manitoba's twelve-month total net inflow was 5,253 migrants, 12.2 times more than the previous twelve months.

Net International Migration

During the fourth quarter of 2021, Manitoba gained 5,424 residents through net international migration (immigrants minus emigrants). Our quarterly inflow of 5,850 immigrants resulted in a rate of 4.21 immigrants per thousand population, above Canada's rate of 3.59 and fourth among provinces. During the twelve months ending December 31, 2021, Manitoba welcomed 16,587 immigrants, 1.9 times more than the twelve months prior.

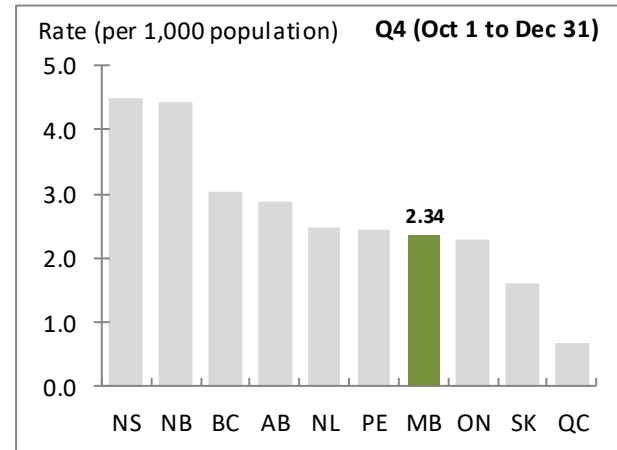
Other International Migration

Manitoba experienced a net gain of 460 other international migrants during the fourth quarter of 2021, resulting in a rate of 0.33 migrants per thousand population. Our net increase of 2,568 migrants between January 1, 2021 and December 31, 2021 was a reversal from the net outflow of 758 migrants for the previous twelve months.

Net Interprovincial Migration

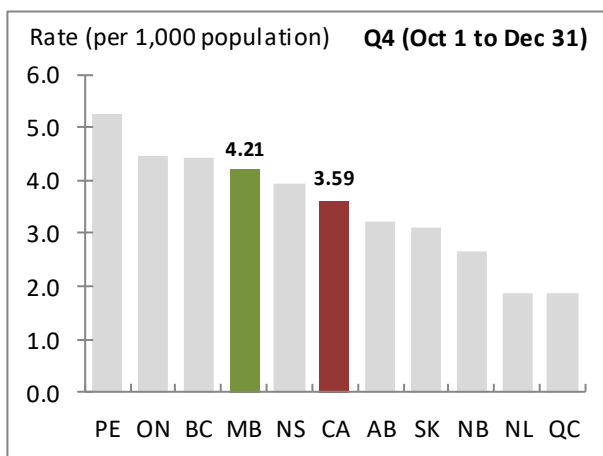
Manitoba had a net interprovincial outflow of 2,641 migrants during the fourth quarter of 2021. Our quarterly rate of -1.90 migrants per thousand population ranked tenth among provinces. The province's twelve-month net interprovincial outflow was 12,529 migrants, 1.8 times the net figure for the preceding twelve months.

Quarterly Total Net Migration Rate



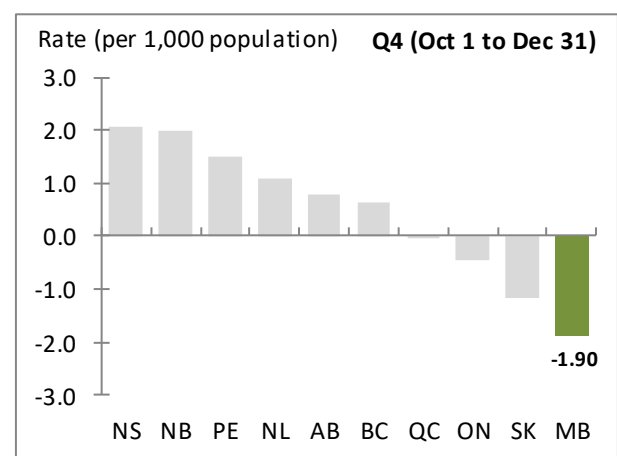
Source: Statistics Canada, Tables 17-10-0009-01, 17-10-0020-01, 17-10-0023-01 and 17-10-0040-01

Quarterly Immigration Rate



Source: Statistics Canada, Tables 17-10-0009-01 and 17-10-0040-01

Quarterly Net Interprovincial Migration Rate



Source: Statistics Canada, Tables 17-10-0009-01 and 17-10-0020-01

Gains and Losses?

Manitoba is considered to have a **net gain** when the number of people moving in from a given province or territory is greater than the number moving out, otherwise the **net interchange** is considered to be a **loss**.

Example: Say 28 people moved from Manitoba to Ontario and, over the same time period, 10 people moved from Ontario to Manitoba. Our resulting net interchange with Ontario would be a loss of 18 people.

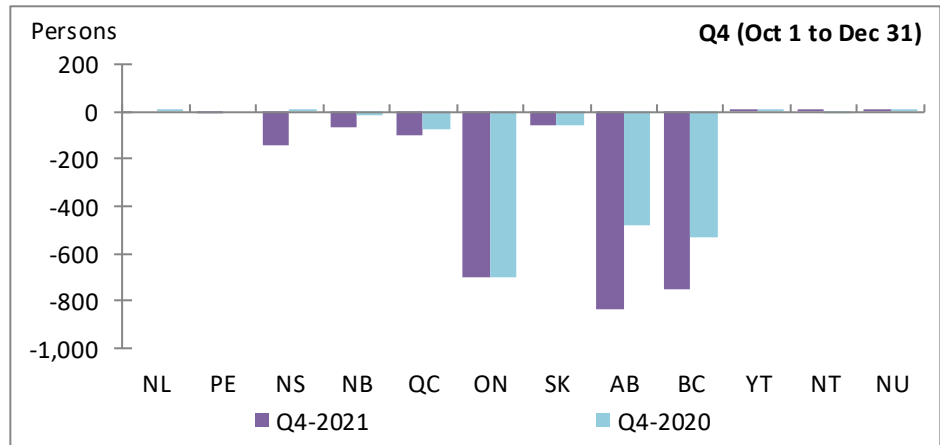
Manitoba Net Interprovincial Migration - Gains and Losses

	Q4-2021 (1)	Q4-2020 (2)	Change (1)-(2)	Q1-2021 to Q4-2021 (3)	Q1-2020 to Q4-2020 (4)	Change (3)-(4)
NL	0	1	-1 ↓	6	62	-56 ↓
PE	-4	0	-4 ↓	38	-23	61 ↑
NS	-139	10	-149 ↓	-355	-127	-228 ↓
NB	-67	-16	-51 ↓	-316	-83	-233 ↓
QC	-101	-72	-29 ↓	-468	-180	-288 ↓
ON	-701	-699	-2 ↓	-2,489	-2,309	-180 ↓
SK	-56	-59	3 ↑	-409	230	-639 ↓
AB	-839	-480	-359 ↓	-4,130	-2,249	-1,881 ↓
BC	-749	-529	-220 ↓	-4,437	-2,307	-2,130 ↓
YT	5	1	4 ↑	18	-3	21 ↑
NT	3	-7	10 ↑	-21	-17	-4 ↓
NU	7	11	-4 ↓	34	17	17 ↑
TOTAL	-2,641	-1,839	-802 ↓	-12,529	-6,989	-5,540 ↓

Gains and Losses: Quarterly

During the fourth quarter of 2021, Manitoba had net interprovincial migration gains from three jurisdictions. The largest net inflow was from Nunavut, while the largest outflow was to Alberta.

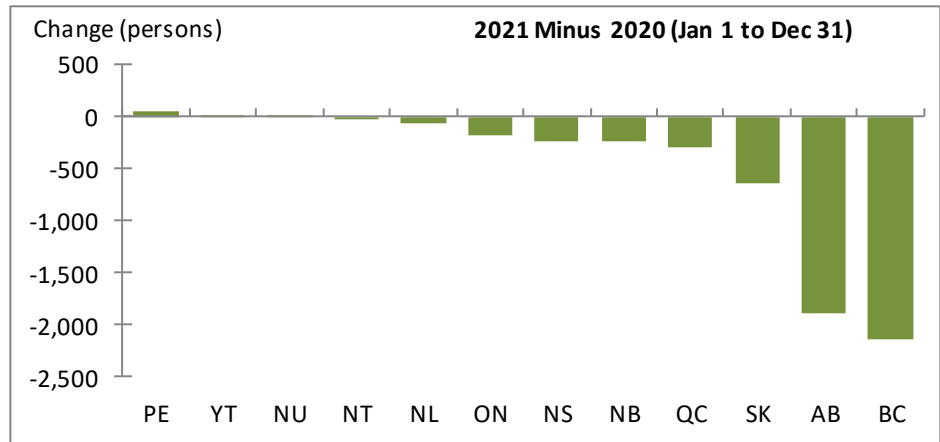
Compared to the same quarter twelve months ago, Manitoba's net interchange has improved with three jurisdictions.



Twelve-month

Over the twelve months ending December 31, 2021, Manitoba had net migration gains from four jurisdictions. The largest net inflow was from Prince Edward Island, while the largest outflow was to British Columbia.

Compared to the previous twelve month period, Manitoba's net interchange has improved with three jurisdictions.

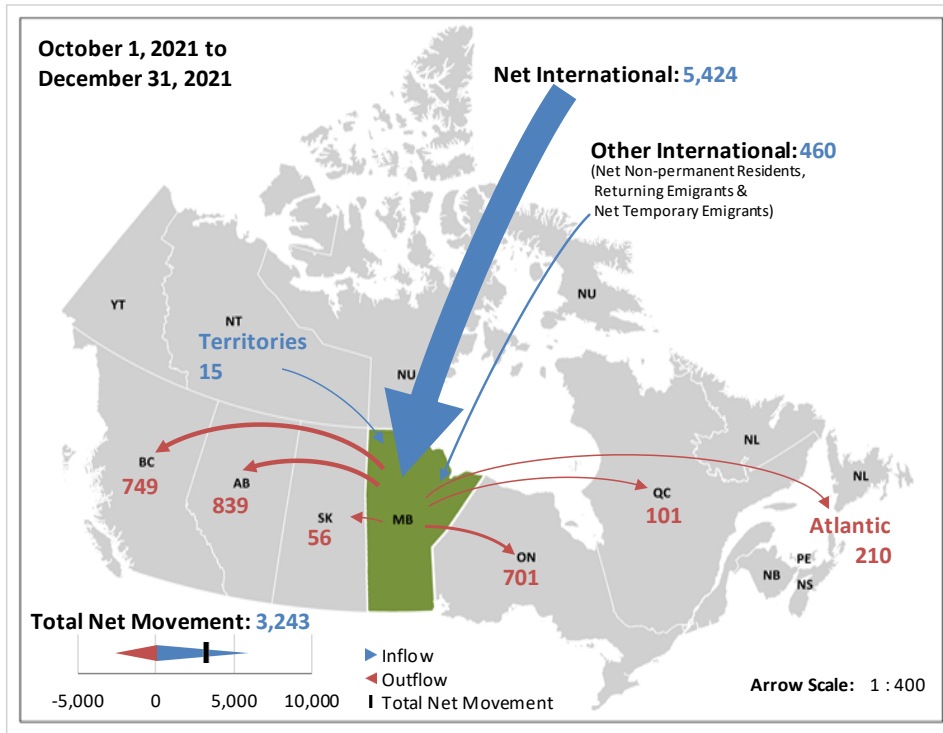


Source: Statistics Canada, Table 17-10-0045-01

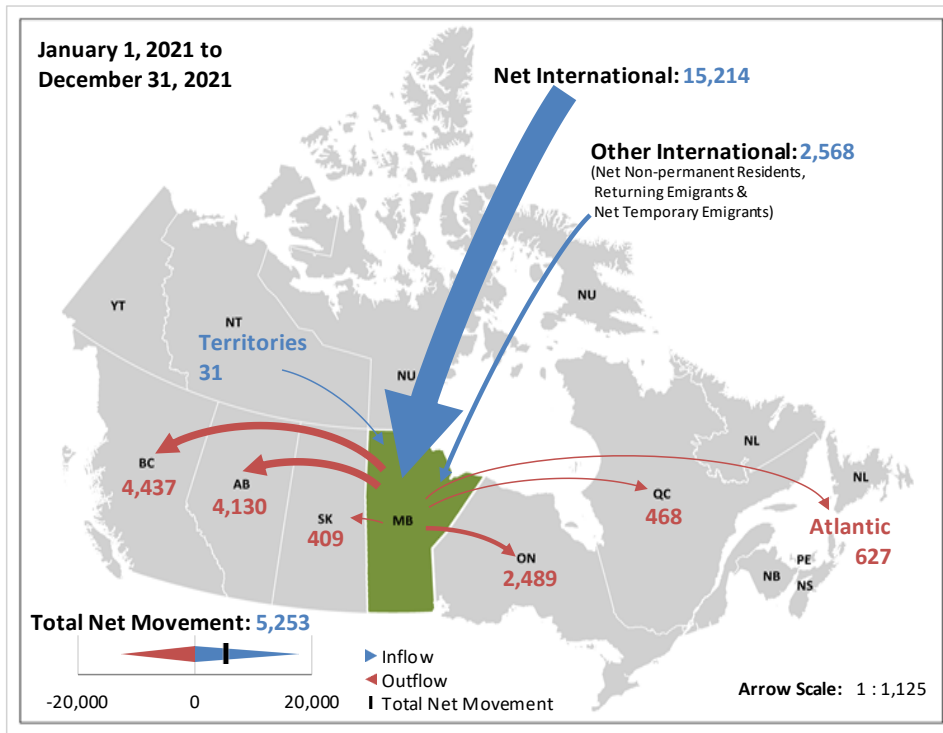
Contact: Manitoba Bureau of Statistics mbs@gov.mb.ca
 MBS public website: <https://www.gov.mb.ca/mbs/moreinfo.html?id=16>

Manitoba Net Migration - Gains and Losses

Current Quarter



Current Twelve-month period



Note: Arrows are scaled, on a per chart basis, to reflect the relative net migration between Manitoba and other jurisdictions.

Source: Statistics Canada, Tables 17-10-0040-01 and 17-10-0045-01

Appendix Tables

Comparability over time?

Estimates of population and demographic components may not be fully comparable over time due to seasonal effects, changes in methodologies and completeness of source data.

Manitoba Population and Demographic Estimates - 12-month (Persons)

Jan 1 to Dec 31	Start Population	Natural Increase	Migration				Component Growth	Residual	Population Growth	End Population
			Net Interprovincial	Net International	Other International	Total Net				
2002	1,152,837	4,039	-4,120	3,204	1,213	297	4,336	1,196	5,532	1,158,369
2003	1,158,369	4,073	-2,189	4,860	1,347	4,018	8,091	1,196	9,287	1,167,656
2004	1,167,656	3,908	-3,823	6,011	1,099	3,287	7,195	1,200	8,395	1,176,051
2005	1,176,051	4,288	-8,602	6,246	741	-1,615	2,673	1,196	3,869	1,179,920
2006	1,179,920	4,791	-7,277	8,313	1,022	2,058	6,849	-2,266	4,583	1,184,503
2007	1,184,503	5,327	-3,449	9,249	2,074	7,874	13,201	-4,296	8,905	1,193,408
2008	1,193,408	5,412	-3,931	9,567	1,555	7,191	12,603	-4,309	8,294	1,201,702
2009	1,201,702	5,968	-2,514	11,972	1,102	10,560	16,528	-4,297	12,231	1,213,933
2010	1,213,933	5,801	-2,590	14,160	204	11,774	17,575	-4,296	13,279	1,227,212
2011	1,227,212	5,370	-4,171	14,423	1,297	11,549	16,919	-1,990	14,929	1,242,141
2012	1,242,141	6,296	-3,928	11,789	2,372	10,233	16,529	-730	15,799	1,257,940
2013	1,257,940	6,373	-6,146	11,642	2,481	7,977	14,350	-728	13,622	1,271,562
2014	1,271,562	5,857	-6,884	14,489	2,157	9,762	15,619	-728	14,891	1,286,453
2015	1,286,453	6,005	-5,859	13,069	3,604	10,814	16,819	-728	16,091	1,302,544
2016	1,302,544	6,153	-5,426	15,126	5,991	15,691	21,844	-259	21,585	1,324,129
2017	1,324,129	5,977	-5,542	13,119	6,735	14,312	20,289	0	20,289	1,344,418
2018	1,344,418	6,040	-7,488	13,961	4,889	11,362	17,402	0	17,402	1,361,820
2019	1,361,820	5,562	-8,694	17,705	1,185	10,196	15,758	0	15,758	1,377,578
2020	1,377,578	3,452	-6,989	8,176	-758	429	3,881	0	3,881	1,381,459
2021	1,381,459	3,537	-12,529	15,214	2,568	5,253	8,790	0	8,790	1,390,249
2022	1,390,249									

Source: Statistics Canada, Tables 17-10-0009-01, 17-10-0020-01, 17-10-0040-01 and 17-10-0059-01

Manitoba Population and Demographic Estimates - Quarterly (Persons)

Start of Quarter	Start Population	Natural Increase	Migration				Component Growth	Residual	Population Growth	End Population
			Net Interprovincial	Net International	Other International	Total Net				
Jan 1, 2017	1,324,129	1,067	-886	3,574	528	3,216	4,283	0	4,283	1,328,412
Apr 1, 2017	1,328,412	1,574	-1,357	4,199	1,962	4,804	6,378	0	6,378	1,334,790
Jul 1, 2017	1,334,790	1,943	-1,945	3,276	2,501	3,832	5,775	0	5,775	1,340,565
Oct 1, 2017	1,340,565	1,393	-1,354	2,070	1,744	2,460	3,853	0	3,853	1,344,418
Jan 1, 2018	1,344,418	1,159	-1,775	3,175	78	1,478	2,637	0	2,637	1,347,055
Apr 1, 2018	1,347,055	1,701	-2,074	4,171	1,972	4,069	5,770	0	5,770	1,352,825
Jul 1, 2018	1,352,825	1,894	-2,230	3,469	2,010	3,249	5,143	0	5,143	1,357,968
Oct 1, 2018	1,357,968	1,286	-1,409	3,146	829	2,566	3,852	0	3,852	1,361,820
Jan 1, 2019	1,361,820	1,196	-1,498	3,003	146	1,651	2,847	0	2,847	1,364,667
Apr 1, 2019	1,364,667	1,490	-2,214	5,103	908	3,797	5,287	0	5,287	1,369,954
Jul 1, 2019	1,369,954	1,740	-3,229	5,717	-101	2,387	4,127	0	4,127	1,374,081
Oct 1, 2019	1,374,081	1,136	-1,753	3,882	232	2,361	3,497	0	3,497	1,377,578
Jan 1, 2020	1,377,578	939	-1,642	2,811	49	1,218	2,157	0	2,157	1,379,735
Apr 1, 2020	1,379,735	1,178	-1,673	1,454	-46	-265	913	0	913	1,380,648
Jul 1, 2020	1,380,648	1,275	-1,835	2,141	-1,782	-1,476	-201	0	-201	1,380,447
Oct 1, 2020	1,380,447	60	-1,839	1,770	1,021	952	1,012	0	1,012	1,381,459
Jan 1, 2021	1,381,459	696	-2,398	3,193	688	1,483	2,179	0	2,179	1,383,638
Apr 1, 2021	1,383,638	857	-3,613	2,378	505	-730	127	0	127	1,383,765
Jul 1, 2021	1,383,765	1,311	-3,877	4,219	915	1,257	2,568	0	2,568	1,386,333
Oct 1, 2021	1,386,333	673	-2,641	5,424	460	3,243	3,916	0	3,916	1,390,249
Jan 1, 2022	1,390,249									

Source: Statistics Canada, Tables 17-10-0009-01, 17-10-0020-01, 17-10-0040-01 and 17-10-0059-01

March 17, 2022

Manitoba Bureau of Statistics
Finance Policy & Legislation

