

Quarterly Demographic Estimates

April 2022



Highlights

Manitoba's total population was estimated at 1,393,179 residents as of April 1, 2022, up 2,930 individuals from the January 1, 2022 estimate. On a twelve-month basis (compared to April 1, 2021) Manitoba's population increased by 9,541 people, or 0.69%. Although Manitoba's twelve-month immigration levels are second highest on record, net interprovincial outflows not seen since 1979/80 hamper growth.

Per '000 Population?

A **rate per thousand population** is calculated by dividing the number of events for a time period by the population at the mid-point of the period, then multiplying by 1,000. These crude rates allow for quick comparisons among characteristics or jurisdictions.

In this document, the mid-point population is the average of population estimates for the start and end of the quarter.

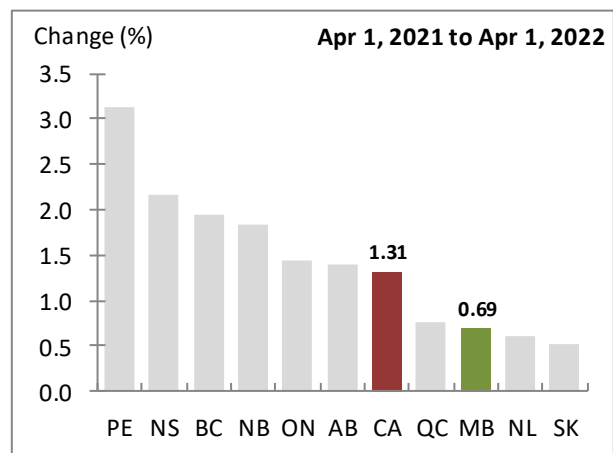
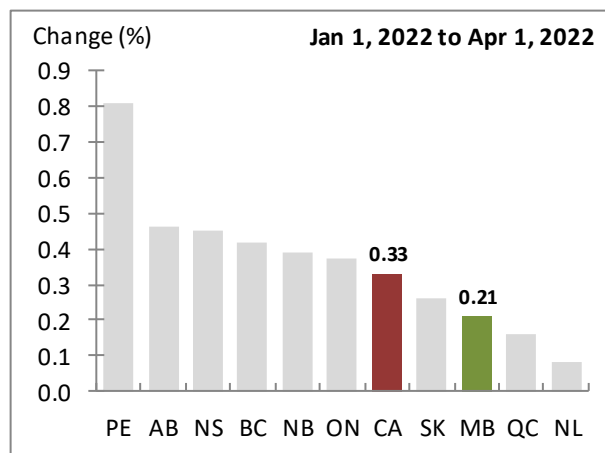
Next Release: September 28, 2022.

Manitoba Quarterly Population and Demographic Estimates

Demographic Component	Estimate (Persons)	Per '000 Population
Start Population (Jan 1, 2022)	1,390,249	
Natural Increase (Net)	570	0.41
Births	3,873	2.78
Deaths	3,303	2.37
Total Net Migration	2,360	1.70
Net Interprovincial	-2,229	-1.60
In	2,763	1.99
Out	4,992	3.59
Net International	4,889	3.51
Immigration	5,163	3.71
Emigration	274	0.20
Other International	-300	-0.22
Net Non-permanent Residents	-285	-0.20
Returning Emigrants	118	0.08
Net Temporary Emigrants	133	0.10
End Population (Apr 1, 2022)	1,393,179	

Source: Statistics Canada, Tables 17-10-0009-01, 17-10-0020-01, 17-10-0040-01 and 17-10-0059-01

Population Growth, Canada and Provinces



Source: Statistics Canada, Table 17-10-0009-01

Statistics Canada's documentation: <http://www23.statcan.gc.ca/imdb/p2SV.pl?Function=getSurvey&SDDS=3601>

June 22, 2022

Manitoba Bureau of Statistics
Fiscal Policy and Corporate Services



Population Growth

Quarterly growth

Over the three months ending April 2022, Manitoba's population increased by an estimated 2,930 people. Our quarterly growth rate of 0.21% was weaker than Canada's 0.33%, and eighth provincially.

Twelve-month growth

Manitoba's population increased by an estimated 9,541 people between April 2021 and April 2022. The province's twelve-month growth rate of 0.69% was weaker than Canada's 1.31%, and eighth provincially.

Population Estimate?

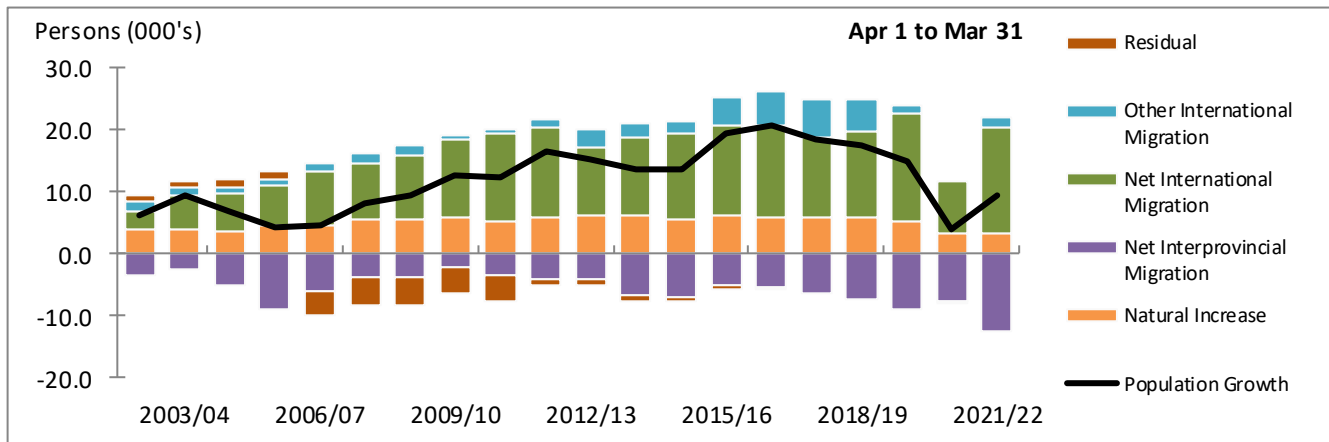
Estimates are derived from Census counts, but are adjusted for net Census undercoverage, incompletely enumerated Indian reserves and demographic growth.

Population Estimates - Manitoba and Canada

	Manitoba	Canada
Estimate (Persons)		
Apr 1, 2021	1,383,638	38,153,211
Jan 1, 2022	1,390,249	38,526,760
Apr 1, 2022	1,393,179	38,654,738
Change (Persons)		
Apr 1, 2021 to Apr 1, 2022	9,541	501,527
Jan 1, 2022 to Apr 1, 2022	2,930	127,978
Change (%)		
Apr 1, 2021 to Apr 1, 2022	0.69	1.31
Jan 1, 2022 to Apr 1, 2022	0.21	0.33

Source: Statistics Canada, Table 17-10-0009-01

Twelve-month Growth, Component Contributions



Source: Statistics Canada, Tables 17-10-0009-01, 17-10-0020-01, 17-10-0040-01 and 17-10-0059-01

Other International Migration?

Other International migration groups together the temporary international migration flows and is comprised of the net change in Non-permanent Residents, plus Returning Emigrants, less Net Temporary Emigrants.

Non-permanent Residents?

The majority of **Non-permanent Residents** are students and temporary workers, while the remainder are refugee status claimants and non-Canadian born dependents of refugee claimants or permit holders.

Residual?

Residual deviation is obtained by distributing the error of closure linearly throughout the intercensal period.

The **error of closure** is defined as the difference between the final postcensal population estimates on Census Day and the most recent Census counts (adjusted for Census net undercoverage and incompletely enumerated Indian reserves).

A **positive error of closure** means that the postcensal population estimates have overestimated the population. A **negative residual** would then be required to correct the overestimation.

Components of Growth

Natural Increase

During the first quarter of 2022, Manitoba recorded a gain of 570 people due to natural increase (births minus deaths). Over the twelve months ending March 31, 2022, our natural increase was 3,411 people, 6.29% higher than the twelve months prior.

Total Net Migration

Combining all the migration components together, Manitoba had a total net inflow of 2,360 migrants during the first quarter of 2022. Our quarterly rate of 1.70 migrants per thousand population ranked ninth among provinces. Manitoba's twelve-month total net inflow was 6,130 migrants, 8.8 times more than the previous twelve months.

Net International Migration

During the first quarter of 2022, Manitoba gained 4,889 residents through net international migration (immigrants minus emigrants). Our quarterly inflow of 5,163 immigrants resulted in a rate of 3.71 immigrants per thousand population, above Canada's rate of 2.95 and third among provinces. During the twelve months ending March 31, 2022, Manitoba welcomed 18,364 immigrants, 2.0 times more than the twelve months prior.

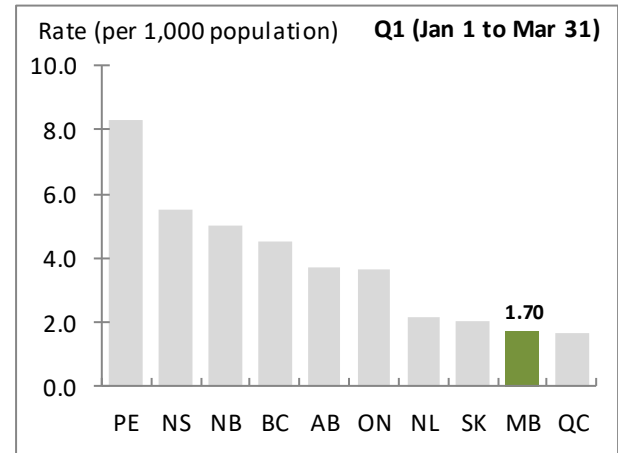
Other International Migration

Manitoba experienced a net loss of 300 other international migrants during the first quarter of 2022, resulting in a rate of -0.22 migrants per thousand population. Our net increase of 1,580 migrants between April 1, 2021 and March 31, 2022 was a reversal from the net outflow of 119 migrants for the previous twelve months.

Net Interprovincial Migration

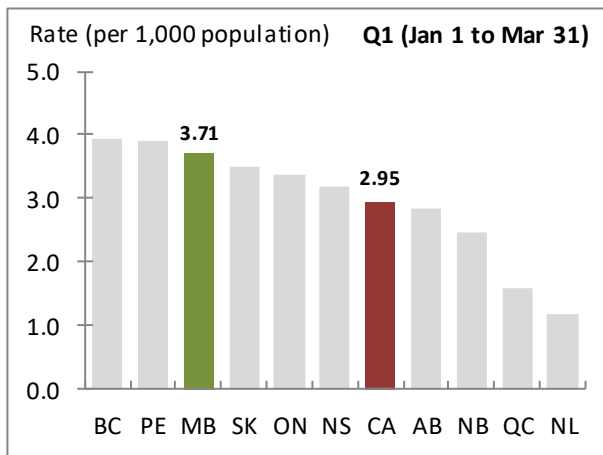
Manitoba had a net interprovincial outflow of 2,229 migrants during the first quarter of 2022. Our quarterly rate of -1.60 migrants per thousand population ranked tenth among provinces. The province's twelve-month net interprovincial outflow was 12,360 migrants, 1.6 times the net figure for the preceding twelve months.

Quarterly Total Net Migration Rate



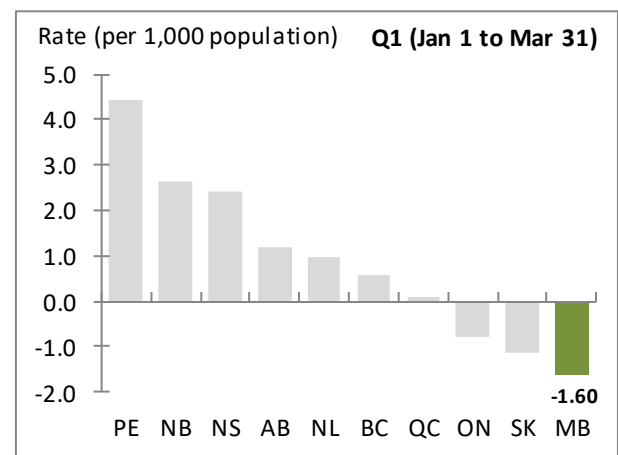
Source: Statistics Canada, Tables 17-10-0009-01, 17-10-0020-01, 17-10-0023-01 and 17-10-0040-01

Quarterly Immigration Rate



Source: Statistics Canada, Tables 17-10-0009-01 and 17-10-0040-01

Quarterly Net Interprovincial Migration Rate



Source: Statistics Canada, Tables 17-10-0009-01 and 17-10-0020-01

Gains and Losses?

Manitoba is considered to have a **net gain** when the number of people moving in from a given province or territory is greater than the number moving out, otherwise the **net interchange** is considered to be a **loss**.

Example: Say 28 people moved from Manitoba to Ontario and, over the same time period, 10 people moved from Ontario to Manitoba. Our resulting net interchange with Ontario would be a loss of 18 people.

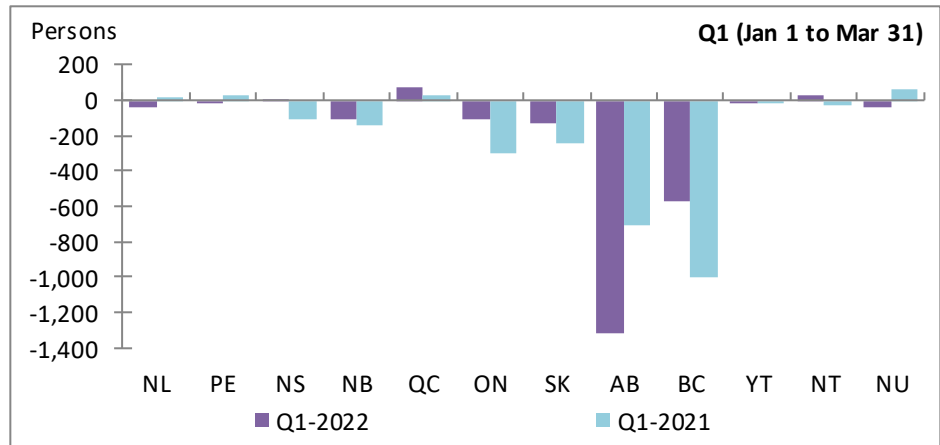
Manitoba Net Interprovincial Migration - Gains and Losses

	Q1-2022 (1)	Q1-2021 (2)	Change (1)-(2)	Q2-2021 to Q1-2022 (3)	Q2-2020 to Q1-2021 (4)	Change (3)-(4)
NL	-36	13	-49 ↓	-43	70	-113 ↓
PE	-17	26	-43 ↓	-5	6	-11 ↓
NS	9	-102	111 ↑	-244	-226	-18 ↓
NB	-103	-142	39 ↑	-277	-211	-66 ↓
QC	70	24	46 ↑	-422	-118	-304 ↓
ON	-111	-297	186 ↑	-2,303	-2,099	-204 ↓
SK	-134	-239	105 ↑	-304	-156	-148 ↓
AB	-1,315	-704	-611 ↓	-4,741	-2,381	-2,360 ↓
BC	-573	-999	426 ↑	-4,011	-2,677	-1,334 ↓
YT	-8	-4	-4 ↓	14	-7	21 ↑
NT	28	-32	60 ↑	39	-39	78 ↑
NU	-39	58	-97 ↓	-63	93	-156 ↓
TOTAL	-2,229	-2,398	169 ↑	-12,360	-7,745	-4,615 ↓

Gains and Losses: Quarterly

During the first quarter of 2022, Manitoba had net interprovincial migration gains from three jurisdictions. The largest net inflow was from Quebec, while the largest outflow was to Alberta.

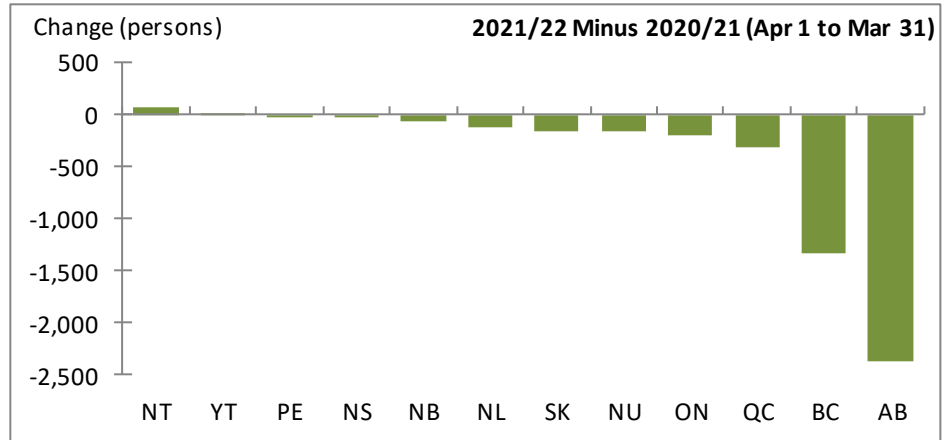
Compared to the same quarter twelve months ago, Manitoba's net interchange has improved with seven jurisdictions.



Twelve-month

Over the twelve months ending March 31, 2022, Manitoba had net migration gains from two jurisdictions. The largest net inflow was from Northwest Territories, while the largest outflow was to Alberta.

Compared to the previous twelve month period, Manitoba's net interchange has improved with two jurisdictions.



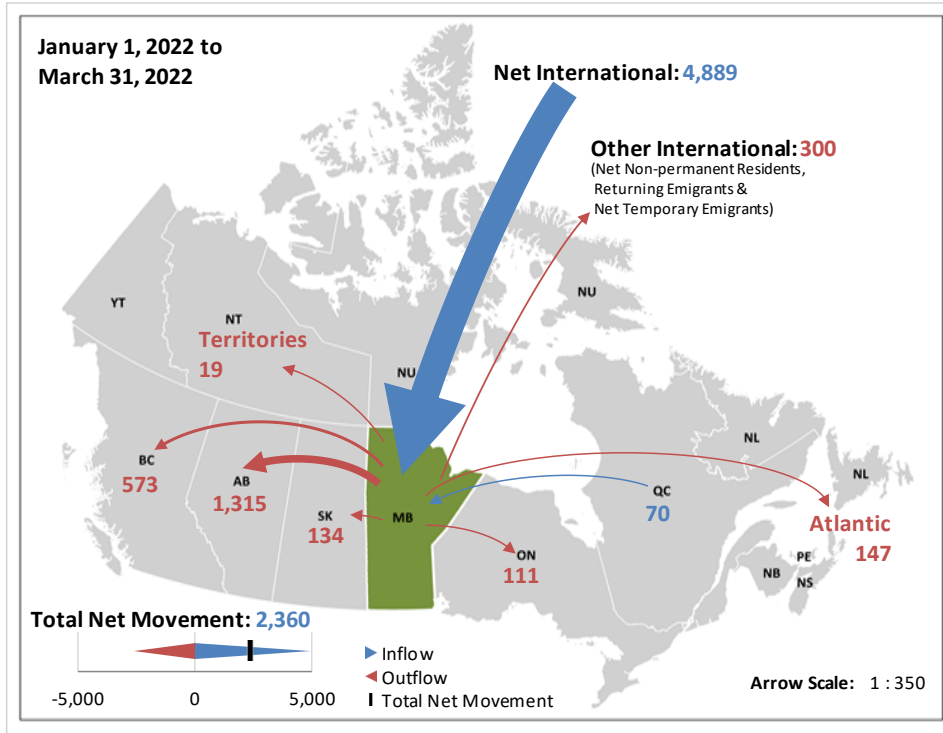
Source: Statistics Canada, Table 17-10-0045-01

Contact: Manitoba Bureau of Statistics mbs@gov.mb.ca
 MBS public website: <https://www.gov.mb.ca/mbs/moreinfo.html?id=16>

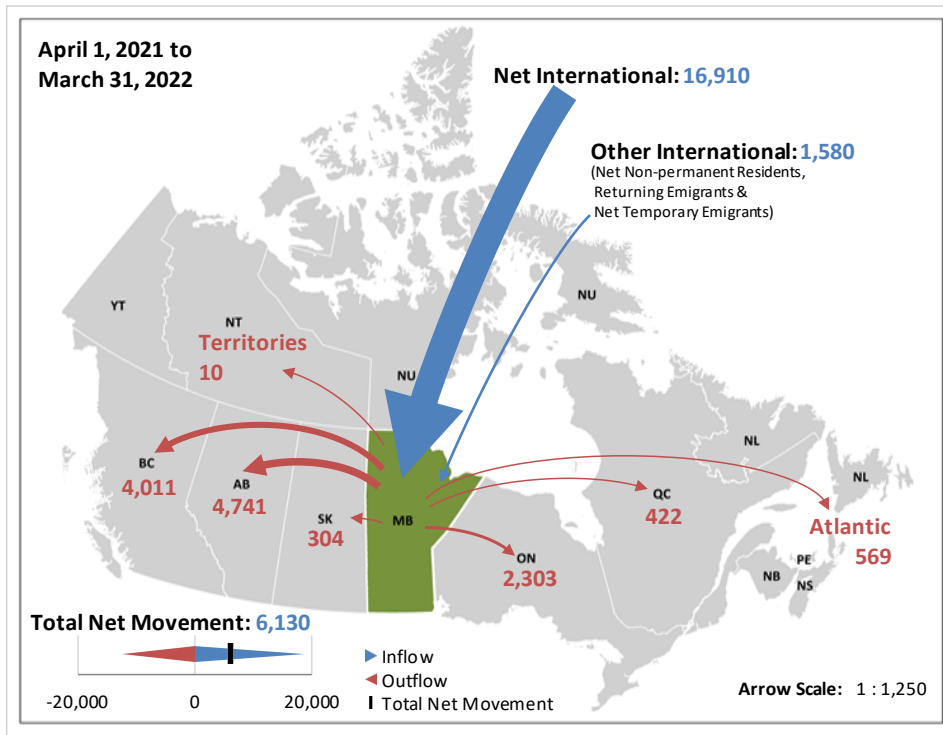


Manitoba Net Migration - Gains and Losses

Current Quarter



Current Twelve-month period



Note: Arrows are scaled, on a per chart basis, to reflect the relative net migration between Manitoba and other jurisdictions.

Source: Statistics Canada, Tables 17-10-0040-01 and 17-10-0045-01

Appendix Tables

Comparability over time?

Estimates of population and demographic components may not be fully comparable over time due to seasonal effects, changes in methodologies and completeness of source data.

Manitoba Population and Demographic Estimates - 12-month (Persons)

Apr 1 to Mar 31	Start Population	Natural Increase	Migration				Component Growth	Residual	Population Growth	End Population
			Net Interprovincial	Net International	Other International	Total Net				
2002/03	1,154,737	3,963	-3,455	3,079	1,343	967	4,930	1,196	6,126	1,160,863
2003/04	1,160,863	4,139	-2,392	5,335	1,203	4,146	8,285	1,199	9,484	1,170,347
2004/05	1,170,347	3,749	-5,087	6,178	902	1,993	5,742	1,196	6,938	1,177,285
2005/06	1,177,285	4,479	-8,868	6,674	868	-1,326	3,153	1,197	4,350	1,181,635
2006/07	1,181,635	4,778	-6,132	8,528	1,241	3,637	8,415	-3,620	4,795	1,186,430
2007/08	1,186,430	5,470	-3,823	9,001	1,893	7,071	12,541	-4,309	8,232	1,194,662
2008/09	1,194,662	5,634	-3,819	10,231	1,602	8,014	13,648	-4,296	9,352	1,204,014
2009/10	1,204,014	6,003	-2,098	12,424	564	10,890	16,893	-4,297	12,596	1,216,610
2010/11	1,216,610	5,397	-3,281	14,032	602	11,353	16,750	-4,297	12,453	1,229,063
2011/12	1,229,063	5,795	-4,038	14,593	1,390	11,945	17,740	-1,111	16,629	1,245,692
2012/13	1,245,692	6,197	-4,177	11,158	2,692	9,673	15,870	-728	15,142	1,260,834
2013/14	1,260,834	6,160	-6,761	12,638	2,264	8,141	14,301	-728	13,573	1,274,407
2014/15	1,274,407	5,704	-6,976	13,787	1,900	8,711	14,415	-728	13,687	1,288,094
2015/16	1,288,094	6,403	-5,009	14,368	4,563	13,922	20,325	-730	19,595	1,307,689
2016/17	1,307,689	5,927	-5,424	14,779	5,519	14,874	20,801	-78	20,723	1,328,412
2017/18	1,328,412	6,069	-6,431	12,720	6,285	12,574	18,643	0	18,643	1,347,055
2018/19	1,347,055	6,077	-7,211	13,789	4,957	11,535	17,612	0	17,612	1,364,667
2019/20	1,364,667	5,305	-8,838	17,513	1,088	9,763	15,068	0	15,068	1,379,735
2020/21	1,379,735	3,209	-7,745	8,558	-119	694	3,903	0	3,903	1,383,638
2021/22	1,383,638	3,411	-12,360	16,910	1,580	6,130	9,541	0	9,541	1,393,179
2022/23	1,393,179									

Source: Statistics Canada, Tables 17-10-0009-01, 17-10-0020-01, 17-10-0040-01 and 17-10-0059-01

Manitoba Population and Demographic Estimates - Quarterly (Persons)

Start of Quarter	Start Population	Natural Increase	Migration				Component Growth	Residual	Population Growth	End Population
			Net Interprovincial	Net International	Other International	Total Net				
Apr 1, 2017	1,328,412	1,574	-1,357	4,199	1,962	4,804	6,378	0	6,378	1,334,790
Jul 1, 2017	1,334,790	1,943	-1,945	3,276	2,501	3,832	5,775	0	5,775	1,340,565
Oct 1, 2017	1,340,565	1,393	-1,354	2,070	1,744	2,460	3,853	0	3,853	1,344,418
Jan 1, 2018	1,344,418	1,159	-1,775	3,175	78	1,478	2,637	0	2,637	1,347,055
Apr 1, 2018	1,347,055	1,701	-2,074	4,171	1,972	4,069	5,770	0	5,770	1,352,825
Jul 1, 2018	1,352,825	1,894	-2,230	3,469	2,010	3,249	5,143	0	5,143	1,357,968
Oct 1, 2018	1,357,968	1,286	-1,409	3,146	829	2,566	3,852	0	3,852	1,361,820
Jan 1, 2019	1,361,820	1,196	-1,498	3,003	146	1,651	2,847	0	2,847	1,364,667
Apr 1, 2019	1,364,667	1,490	-2,214	5,103	908	3,797	5,287	0	5,287	1,369,954
Jul 1, 2019	1,369,954	1,740	-3,229	5,717	-101	2,387	4,127	0	4,127	1,374,081
Oct 1, 2019	1,374,081	1,136	-1,753	3,882	232	2,361	3,497	0	3,497	1,377,578
Jan 1, 2020	1,377,578	939	-1,642	2,811	49	1,218	2,157	0	2,157	1,379,735
Apr 1, 2020	1,379,735	1,178	-1,673	1,454	-46	-265	913	0	913	1,380,648
Jul 1, 2020	1,380,648	1,275	-1,835	2,141	-1,782	-1,476	-201	0	-201	1,380,447
Oct 1, 2020	1,380,447	60	-1,839	1,770	1,021	952	1,012	0	1,012	1,381,459
Jan 1, 2021	1,381,459	696	-2,398	3,193	688	1,483	2,179	0	2,179	1,383,638
Apr 1, 2021	1,383,638	857	-3,613	2,378	505	-730	127	0	127	1,383,765
Jul 1, 2021	1,383,765	1,311	-3,877	4,219	915	1,257	2,568	0	2,568	1,386,333
Oct 1, 2021	1,386,333	673	-2,641	5,424	460	3,243	3,916	0	3,916	1,390,249
Jan 1, 2022	1,390,249	570	-2,229	4,889	-300	2,360	2,930	0	2,930	1,393,179
Apr 1, 2022	1,393,179									

Source: Statistics Canada, Tables 17-10-0009-01, 17-10-0020-01, 17-10-0040-01 and 17-10-0059-01

June 22, 2022

Manitoba Bureau of Statistics
Fiscal Policy and Corporate Services

