

# Quarterly Demographic Estimates

## January 2023



### Highlights

Manitoba's total population was estimated at 1,431,792 residents as of January 1, 2023, up 11,564 individuals from the October 1, 2022 estimate. On a twelve-month basis (compared to January 1, 2022) Manitoba's population increased by 33,489 people, or 2.39%. Although Manitoba's twelve-month immigration and other international levels are modern-day records, net interprovincial outflows not seen since 1989 hamper growth.

#### Per '000 Population?

A **rate per thousand population** is calculated by dividing the number of events for a time period by the population at the mid-point of the period, then multiplying by 1,000. These crude rates allow for quick comparisons among characteristics or jurisdictions.

In this document, the mid-point population is the average of population estimates for the start and end of the quarter.

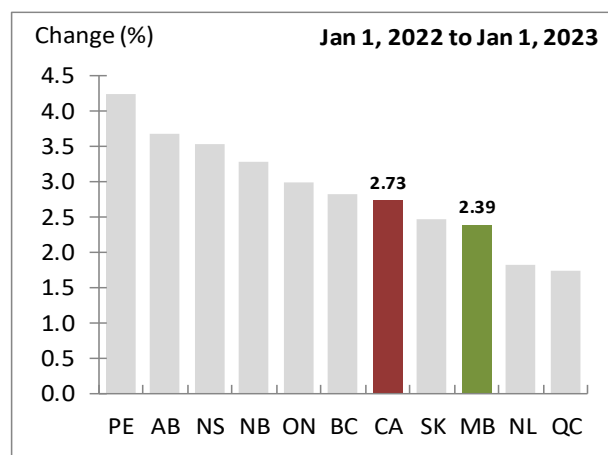
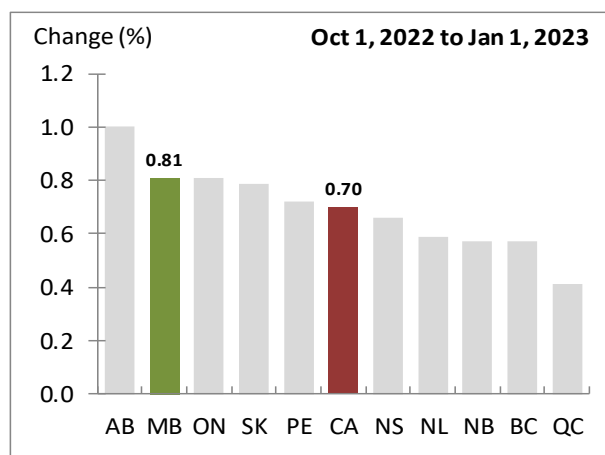
**Next Release:** June 28, 2023.

### Manitoba Quarterly Population and Demographic Estimates

Demographic Component	Estimate (Persons)	Per '000 Population
Start Population (Oct 1, 2022)	1,420,228	
<b>Natural Increase (Net)</b>	495	0.35
Births	3,584	2.51
Deaths	3,089	2.17
<b>Total Net Migration</b>	11,069	7.76
Net Interprovincial	-2,352	-1.65
In	1,949	1.37
Out	4,301	3.02
Net International	4,145	2.91
Immigration	4,429	3.11
Emigration	284	0.20
Other International	9,276	6.50
Net Non-permanent Residents	9,173	6.43
Returning Emigrants	193	0.14
Net Temporary Emigrants	90	0.06
<b>End Population (Jan 1, 2023)</b>	<b>1,431,792</b>	

Source: Statistics Canada, Tables 17-10-0009-01, 17-10-0020-01, 17-10-0040-01 and 17-10-0059-01

### Population Growth, Canada and Provinces



Source: Statistics Canada, Table 17-10-0009-01

**Statistics Canada's documentation:** <http://www23.statcan.gc.ca/imdb/p2SV.pl?Function=getSurvey&SDDS=3601>

March 22, 2023

Manitoba Bureau of Statistics  
Fiscal Policy and Corporate Services



## Population Growth

### Quarterly growth

Over the three months ending January 2023, Manitoba's population increased by an estimated 11,564 people. Our quarterly growth rate of 0.81% was stronger than Canada's 0.70%, and second provincially.

### Twelve-month growth

Manitoba's population increased by an estimated 33,489 people between January 2022 and January 2023, a modern-day record. The province's twelve-month growth rate of 2.39% was weaker than Canada's 2.73%, and eighth provincially.

#### Population Estimate?

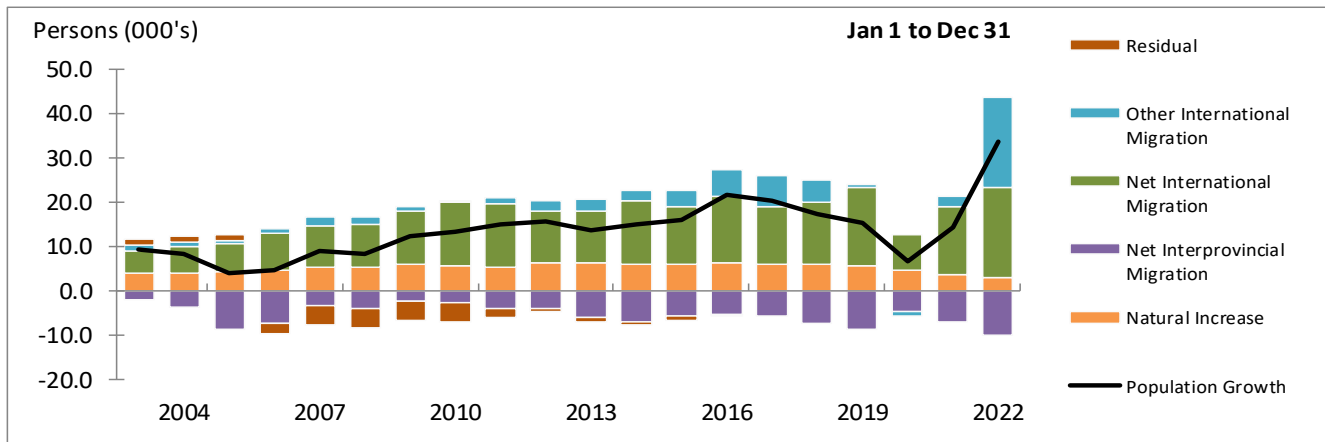
*Estimates are derived from Census counts, but are adjusted for net Census undercoverage, incompletely enumerated Indian reserves and demographic growth.*

### Population Estimates - Manitoba and Canada

	Manitoba	Canada
<b>Estimate (Persons)</b>		
Jan 1, 2022	1,398,303	38,516,138
Oct 1, 2022	1,420,228	39,292,355
Jan 1, 2023	1,431,792	39,566,248
<b>Change (Persons)</b>		
Jan 1, 2022 to Jan 1, 2023	33,489	1,050,110
Oct 1, 2022 to Jan 1, 2023	11,564	273,893
<b>Change (%)</b>		
Jan 1, 2022 to Jan 1, 2023	2.39	2.73
Oct 1, 2022 to Jan 1, 2023	0.81	0.70

Source: Statistics Canada, Table 17-10-0009-01

### Twelve-month Growth, Component Contributions



Source: Statistics Canada, Tables 17-10-0009-01, 17-10-0020-01, 17-10-0040-01 and 17-10-0059-01

#### Other International Migration?

**Other International migration** groups together the temporary international migration flows and is comprised of the net change in Non-permanent Residents, plus Returning Emigrants, less Net Temporary Emigrants.

#### Non-permanent Residents?

The majority of **Non-permanent Residents** are students and temporary workers, while the remainder are refugee status claimants and non-Canadian born dependents of refugee claimants or permit holders.

#### Residual?

**Residual deviation** is obtained by distributing the error of closure linearly throughout the intercensal period.

The **error of closure** is defined as the difference between the final postcensal population estimates on Census Day and the most recent Census counts (adjusted for Census net undercoverage and incompletely enumerated Indian reserves).

A **positive error of closure** means that the postcensal population estimates have overestimated the population. A **negative residual** would then be required to correct the overestimation.

## Components of Growth

### Natural Increase

During the fourth quarter of 2022, Manitoba recorded a gain of 495 people due to natural increase (births minus deaths). Over the twelve months ending December 31, 2022, our natural increase was 3,028 people, 13.76% lower than the twelve months prior.

### Total Net Migration

Combining all the migration components together, Manitoba had a total net inflow of 11,069 migrants during the fourth quarter of 2022. Our quarterly rate of 7.76 migrants per thousand population ranked second among provinces. Manitoba's twelve-month total net inflow was 30,461 migrants, 2.8 times more than the previous twelve months.

### Net International Migration

During the fourth quarter of 2022, Manitoba gained 4,145 residents through net international migration (immigrants minus emigrants). Our quarterly inflow of 4,429 immigrants resulted in a rate of 3.11 immigrants per thousand population, above Canada's rate of 2.11 and second among provinces. During the twelve months ending December 31, 2022, Manitoba welcomed 21,626 immigrants, 30.47% more than the twelve months prior.

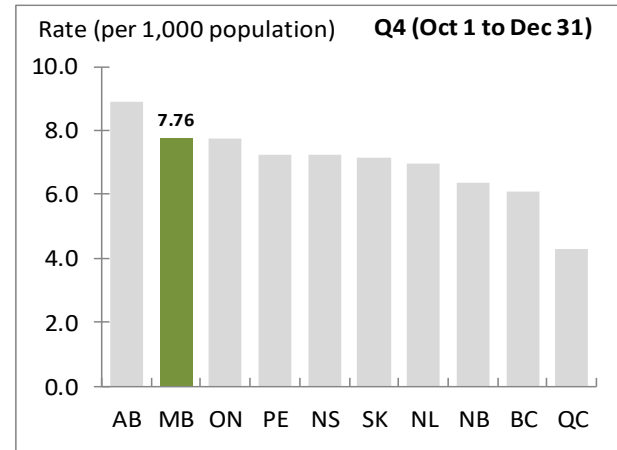
### Other International Migration

Manitoba experienced a net gain of 9,276 other international migrants during the fourth quarter of 2022, resulting in a rate of 6.50 migrants per thousand population. Our net increase of 20,213 migrants between January 1, 2022 and December 31, 2022 was 8.0 times higher than the net figure for the preceding twelve months. Significant increases in the number of International Mobility Program (IMP) permit holders classified by Immigration, Refugees and Citizenship Canada (IRCC) as Other IMP Participants, which includes Public Policies such as the Canada-Ukraine Authorization for Emergency Travel (CUAET), fueled most of the growth.

### Net Interprovincial Migration

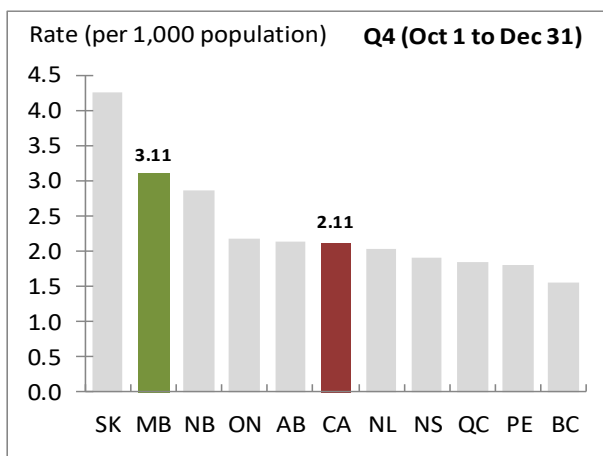
Manitoba had a net interprovincial outflow of 2,352 migrants during the fourth quarter of 2022. Our quarterly rate of -1.65 migrants per thousand population ranked tenth among provinces. The province's twelve-month net interprovincial outflow was 10,132 migrants, 42.34% more than the net figure for the preceding twelve months.

### Quarterly Total Net Migration Rate



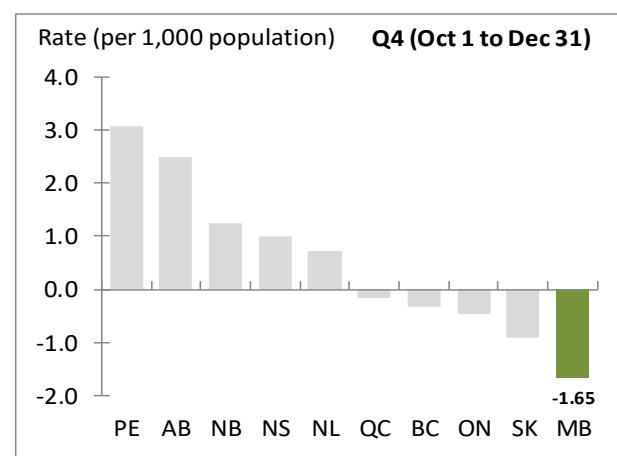
Source: Statistics Canada, Tables 17-10-0009-01, 17-10-0020-01, 17-10-0023-01 and 17-10-0040-01

### Quarterly Immigration Rate



Source: Statistics Canada, Tables 17-10-0009-01 and 17-10-0040-01

### Quarterly Net Interprovincial Migration Rate



Source: Statistics Canada, Tables 17-10-0009-01 and 17-10-0020-01

**Gains and Losses?**

Manitoba is considered to have a **net gain** when the number of people moving in from a given province or territory is greater than the number moving out, otherwise the **net interchange** is considered to be a **loss**.

*Example:* Say 28 people moved from Manitoba to Ontario and, over the same time period, 10 people moved from Ontario to Manitoba. Our resulting net interchange with Ontario would be a loss of 18 people.

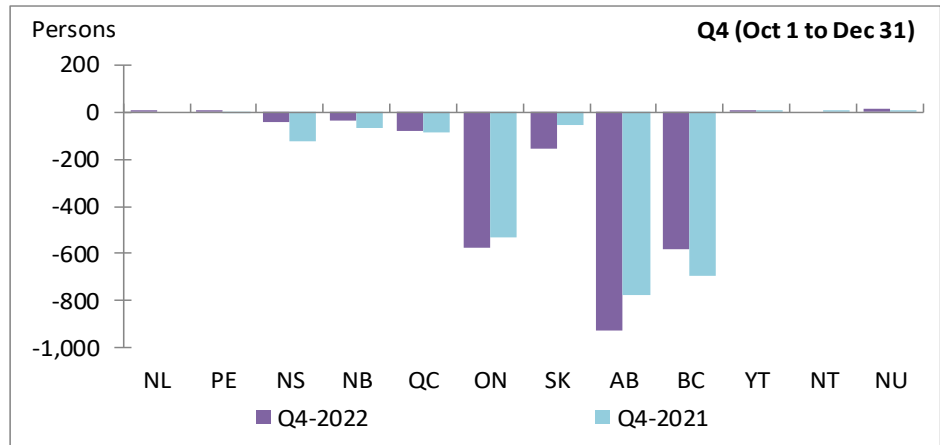
**Manitoba Net Interprovincial Migration - Gains and Losses**

	Q4-2022 (1)	Q4-2021 (2)	Change (1)-(2)	Q1-2022 to Q4-2022 (3)	Q1-2021 to Q4-2021 (4)	Change (3)-(4)
NL	9	0	9 ↑	-98	-1	-97 ↓
PE	5	-4	9 ↑	-15	6	-21 ↓
NS	-41	-125	84 ↑	-119	-212	93 ↑
NB	-35	-65	30 ↑	-134	-221	87 ↑
QC	-77	-87	10 ↑	-154	-252	98 ↑
ON	-577	-534	-43 ↓	-1,151	294	-1,445 ↓
SK	-156	-57	-99 ↓	-686	-301	-385 ↓
AB	-925	-779	-146 ↓	-4,953	-3,286	-1,667 ↓
BC	-580	-697	117 ↑	-2,882	-3,127	245 ↑
YT	10	5	5 ↑	20	-8	28 ↑
NT	0	5	-5 ↓	68	-5	73 ↑
NU	15	8	7 ↑	-28	-5	-23 ↓
<b>TOTAL</b>	<b>-2,352</b>	<b>-2,330</b>	<b>-22 ↓</b>	<b>-10,132</b>	<b>-7,118</b>	<b>-3,014 ↓</b>

**Gains and Losses: Quarterly**

During the fourth quarter of 2022, Manitoba had net interprovincial migration gains from four jurisdictions. The largest net inflow was from Nunavut, while the largest outflow was to Alberta.

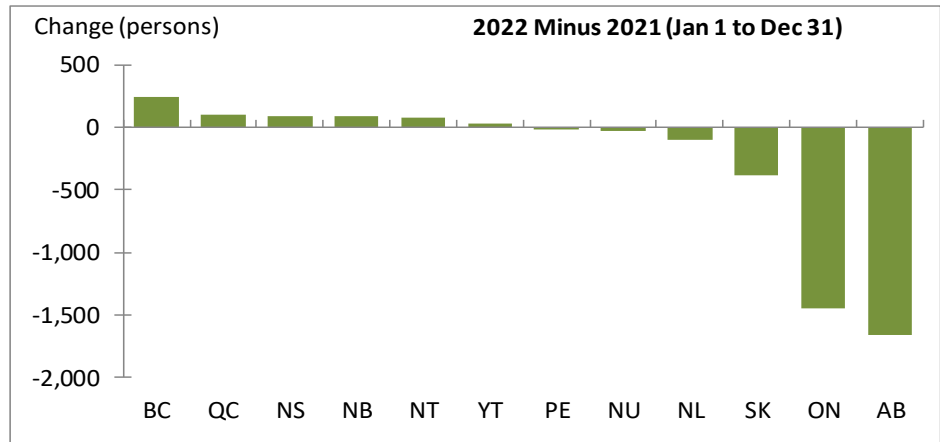
Compared to the same quarter twelve months ago, Manitoba's net interchange has improved with eight jurisdictions.



**Twelve-month**

Over the twelve months ending December 31, 2022, Manitoba had net migration gains from two jurisdictions. The largest net inflow was from Northwest Territories, while the largest outflow was to Alberta.

Compared to the previous twelve month period, Manitoba's net interchange has improved with six jurisdictions.



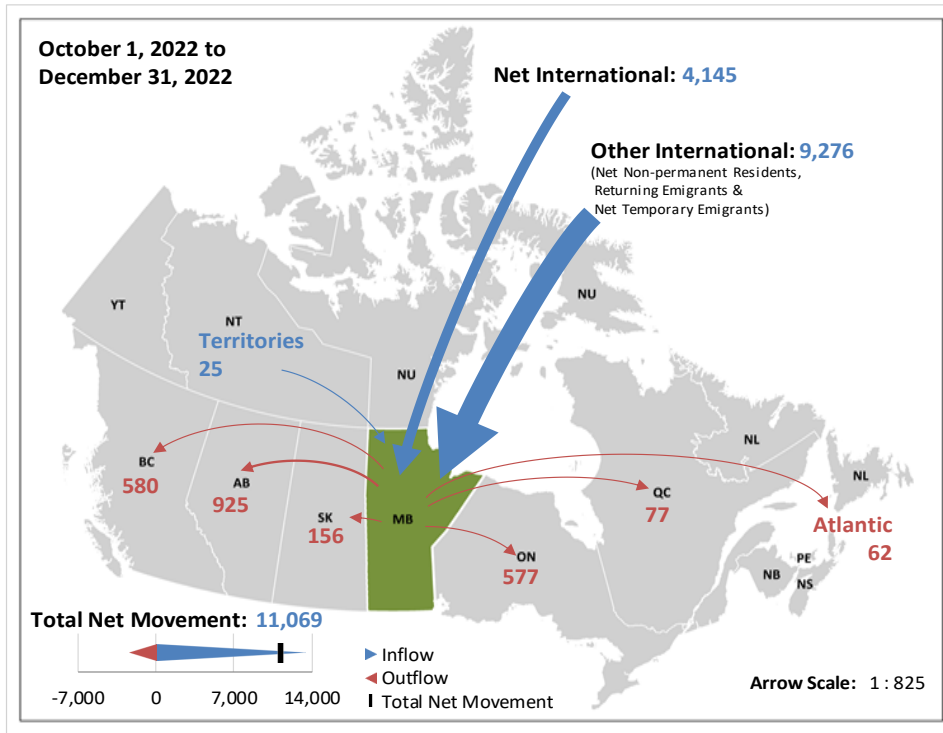
Source: Statistics Canada, Table 17-10-0045-01

Contact: Manitoba Bureau of Statistics [mbs@gov.mb.ca](mailto:mbs@gov.mb.ca)  
 MBS public website: <https://www.gov.mb.ca/mbs/moreinfo.html?id=16>

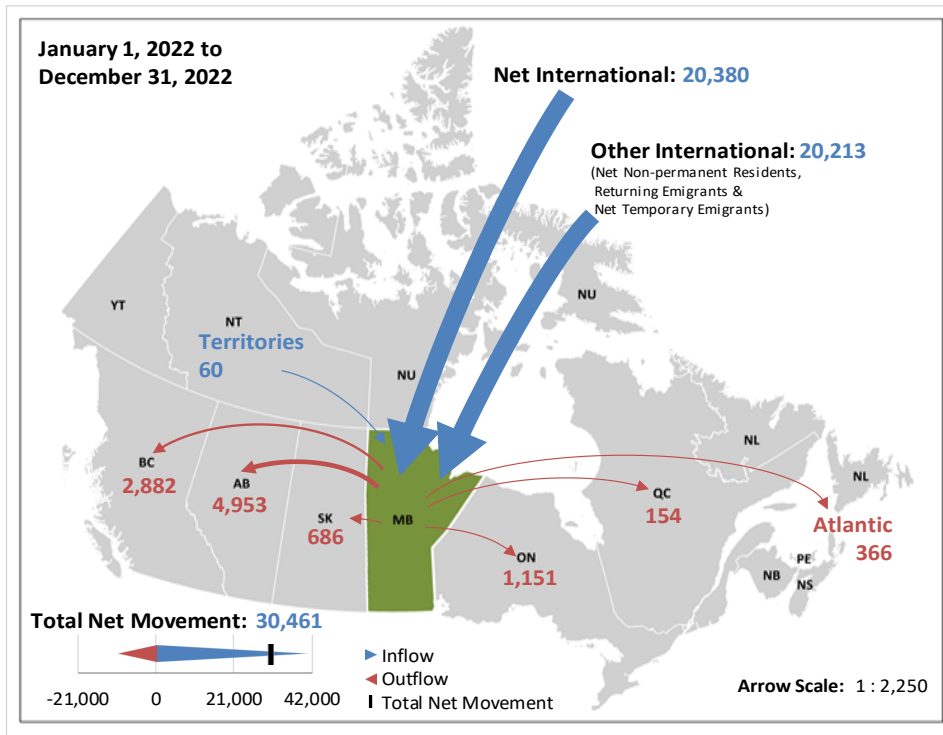


Manitoba Net Migration - Gains and Losses

Current Quarter



Current Twelve-month period



Note: Arrows are scaled, on a per chart basis, to reflect the relative net migration between Manitoba and other jurisdictions.

Source: Statistics Canada, Tables 17-10-0040-01 and 17-10-0045-01

## Appendix Tables

## Comparability over time?

Estimates of population and demographic components may not be fully comparable over time due to seasonal effects, changes in methodologies and completeness of source data.

## Manitoba Population and Demographic Estimates - 12-month (Persons)

Jan 1 to Dec 31	Start Population	Natural Increase	Migration			Total Net	Component Growth	Residual	Population Growth	End Population
			Net Interprovincial	Net International	Other International					
2003	1,158,369	4,073	-2,189	4,860	1,347	4,018	8,091	1,196	9,287	1,167,656
2004	1,167,656	3,908	-3,823	6,011	1,099	3,287	7,195	1,200	8,395	1,176,051
2005	1,176,051	4,288	-8,602	6,246	741	-1,615	2,673	1,196	3,869	1,179,920
2006	1,179,920	4,791	-7,277	8,313	1,022	2,058	6,849	-2,266	4,583	1,184,503
2007	1,184,503	5,327	-3,449	9,249	2,074	7,874	13,201	-4,296	8,905	1,193,408
2008	1,193,408	5,412	-3,931	9,567	1,555	7,191	12,603	-4,309	8,294	1,201,702
2009	1,201,702	5,968	-2,514	11,972	1,102	10,560	16,528	-4,297	12,231	1,213,933
2010	1,213,933	5,801	-2,590	14,160	204	11,774	17,575	-4,296	13,279	1,227,212
2011	1,227,212	5,370	-4,171	14,423	1,297	11,549	16,919	-1,990	14,929	1,242,141
2012	1,242,141	6,296	-3,928	11,789	2,372	10,233	16,529	-730	15,799	1,257,940
2013	1,257,940	6,373	-6,146	11,642	2,481	7,977	14,350	-728	13,622	1,271,562
2014	1,271,562	5,857	-6,884	14,489	2,157	9,762	15,619	-728	14,891	1,286,453
2015	1,286,453	6,005	-5,859	13,069	3,604	10,814	16,819	-728	16,091	1,302,544
2016	1,302,544	6,153	-5,426	15,126	5,991	15,691	21,844	-259	21,585	1,324,129
2017	1,324,129	5,977	-5,542	13,119	6,735	14,312	20,289	0	20,289	1,344,418
2018	1,344,418	6,040	-7,488	13,961	4,889	11,362	17,402	0	17,402	1,361,820
2019	1,361,820	5,562	-8,694	17,713	847	9,866	15,428	0	15,428	1,377,248
2020	1,377,248	4,627	-4,612	7,903	-1,141	2,150	6,777	0	6,777	1,384,025
2021	1,384,025	3,511	-7,118	15,346	2,539	10,767	14,278	0	14,278	1,398,303
2022	1,398,303	3,028	-10,132	20,380	20,213	30,461	33,489	0	33,489	1,431,792
2023	1,431,792									

Source: Statistics Canada, Tables 17-10-0009-01, 17-10-0020-01, 17-10-0040-01 and 17-10-0059-01

## Manitoba Population and Demographic Estimates - Quarterly (Persons)

Start of Quarter	Start Population	Natural Increase	Migration			Total Net	Component Growth	Residual	Population Growth	End Population
			Net Interprovincial	Net International	Other International					
Jan 1, 2018	1,344,418	1,159	-1,775	3,175	78	1,478	2,637	0	2,637	1,347,055
Apr 1, 2018	1,347,055	1,701	-2,074	4,171	1,972	4,069	5,770	0	5,770	1,352,825
Jul 1, 2018	1,352,825	1,894	-2,230	3,469	2,010	3,249	5,143	0	5,143	1,357,968
Oct 1, 2018	1,357,968	1,286	-1,409	3,146	829	2,566	3,852	0	3,852	1,361,820
Jan 1, 2019	1,361,820	1,196	-1,498	3,003	146	1,651	2,847	0	2,847	1,364,667
Apr 1, 2019	1,364,667	1,490	-2,214	5,103	908	3,797	5,287	0	5,287	1,369,954
Jul 1, 2019	1,369,954	1,740	-3,229	5,718	-338	2,151	3,891	0	3,891	1,373,845
Oct 1, 2019	1,373,845	1,136	-1,753	3,889	131	2,267	3,403	0	3,403	1,377,248
Jan 1, 2020	1,377,248	1,121	-1,642	2,782	-371	769	1,890	0	1,890	1,379,138
Apr 1, 2020	1,379,138	1,417	-1,673	1,368	-362	-667	750	0	750	1,379,888
Jul 1, 2020	1,379,888	1,583	-404	2,029	-1,524	101	1,684	0	1,684	1,381,572
Oct 1, 2020	1,381,572	506	-893	1,724	1,116	1,947	2,453	0	2,453	1,384,025
Jan 1, 2021	1,384,025	973	-484	3,168	1,044	3,728	4,701	0	4,701	1,388,726
Apr 1, 2021	1,388,726	1,064	-1,023	2,388	824	2,189	3,253	0	3,253	1,391,979
Jul 1, 2021	1,391,979	1,232	-3,281	4,273	1,227	2,219	3,451	0	3,451	1,395,430
Oct 1, 2021	1,395,430	242	-2,330	5,517	-556	2,631	2,873	0	2,873	1,398,303
Jan 1, 2022	1,398,303	562	-1,701	4,932	-129	3,102	3,664	0	3,664	1,401,967
Apr 1, 2022	1,401,967	745	-2,891	5,362	4,040	6,511	7,256	0	7,256	1,409,223
Jul 1, 2022	1,409,223	1,226	-3,188	5,941	7,026	9,779	11,005	0	11,005	1,420,228
Oct 1, 2022	1,420,228	495	-2,352	4,145	9,276	11,069	11,564	0	11,564	1,431,792
Jan 1, 2023	1,431,792									

Source: Statistics Canada, Tables 17-10-0009-01, 17-10-0020-01, 17-10-0040-01 and 17-10-0059-01

March 22, 2023

Manitoba Bureau of Statistics  
Fiscal Policy and Corporate Services

