

# DEMOGRAPHIC ESTIMATES QUARTERLY

April 2023

## Highlights

Manitoba's total population was estimated at 1,444,190 residents as of April 1, 2023, up 12,398 individuals from the January 1, 2023 estimate. On a twelve-month basis (compared to April 1, 2022) Manitoba's population increased by 42,223 people, or 3.01%. Manitoba's twelve-month immigration and other international levels are modern-day records, however net interprovincial outflows not seen since 1979/80 hamper growth.

## Manitoba Quarterly Population and Demographic Estimates

| Demographic Component               | Estimate<br>(Persons) | Per '000<br>Population |
|-------------------------------------|-----------------------|------------------------|
| Start Population (Jan 1, 2023)      | 1,431,792             |                        |
| <b>Natural Increase (Net)</b>       | 791                   | 0.55                   |
| Births                              | 3,803                 | 2.64                   |
| Deaths                              | 3,012                 | 2.09                   |
| <b>Total Net Migration</b>          | 11,607                | 8.07                   |
| Net Interprovincial                 | -2,687                | -1.87                  |
| In                                  | 3,620                 | 2.52                   |
| Out                                 | 6,307                 | 4.39                   |
| Net International                   | 8,606                 | 5.98                   |
| Immigration                         | 8,846                 | 6.15                   |
| Emigration                          | 240                   | 0.17                   |
| Other International                 | 5,688                 | 3.96                   |
| Net Non-permanent Residents         | 5,615                 | 3.90                   |
| Returning Emigrants                 | 164                   | 0.11                   |
| Net Temporary Emigrants             | 91                    | 0.06                   |
| <b>End Population (Apr 1, 2023)</b> | <b>1,444,190</b>      |                        |

Source: Statistics Canada, Tables 17-10-0009-01, 17-10-0020-01, 17-10-0040-01 and 17-10-0059-01

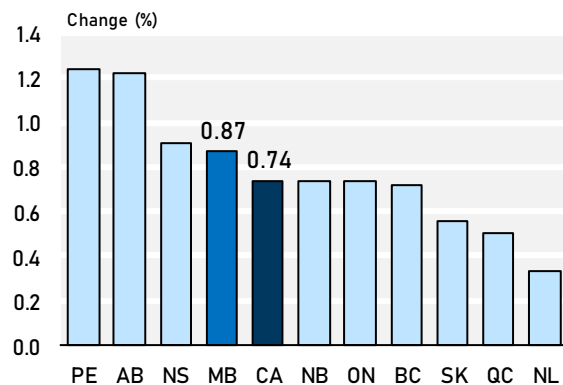
## Population Growth

### Quarterly growth

Over the three months ending April 2023, Manitoba's population increased by an estimated 12,398 people. Our quarterly growth rate of 0.87% was stronger than Canada's 0.74%, and fourth provincially.

### Population Growth, Quarter-over-quarter

Jan 1, 2023 to Apr 1, 2023



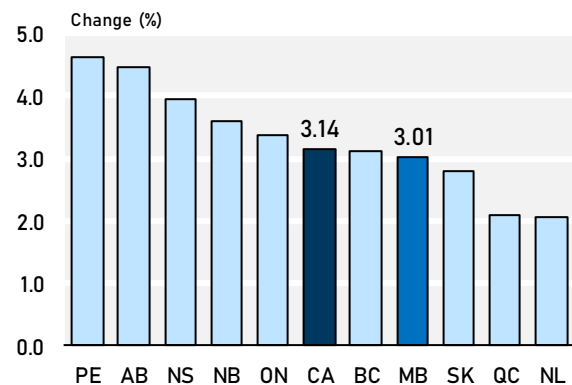
Source: Statistics Canada, Table 17-10-0009-01

### Twelve-month growth

Manitoba's population increased by an estimated 42,223 people between April 2022 and April 2023, a modern-day record. The province's twelve-month growth rate of 3.01% was weaker than Canada's 3.14%, and seventh provincially.

### Population Growth, Year-over-year

Apr 1, 2022 to Apr 1, 2023



Source: Statistics Canada, Table 17-10-0009-01

## Population Estimates - Manitoba and Canada

|                            | Manitoba  | Canada     |
|----------------------------|-----------|------------|
| <b>Estimate (Persons)</b>  |           |            |
| Apr 1, 2022                | 1,401,967 | 38,644,920 |
| Jan 1, 2023                | 1,431,792 | 39,566,248 |
| Apr 1, 2023                | 1,444,190 | 39,858,480 |
| <b>Change (Persons)</b>    |           |            |
| Apr 1, 2022 to Apr 1, 2023 | 42,223    | 1,213,560  |
| Jan 1, 2023 to Apr 1, 2023 | 12,398    | 292,232    |
| <b>Change (%)</b>          |           |            |
| Apr 1, 2022 to Apr 1, 2023 | 3.01      | 3.14       |
| Jan 1, 2023 to Apr 1, 2023 | 0.87      | 0.74       |

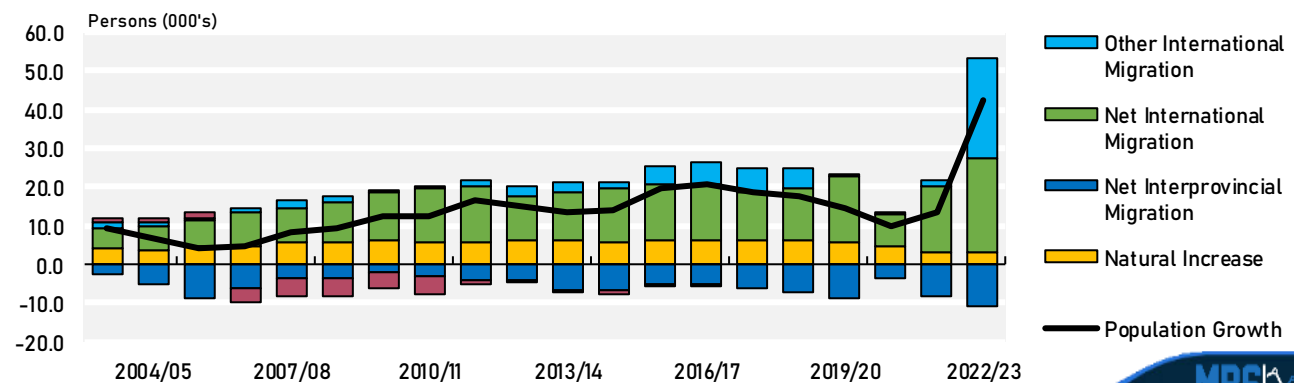
Source: Statistics Canada, Table 17-10-0009-01



## Components of Growth

### Twelve-month Growth, Component Contributions

Apr 1 to Mar 31



Source: Statistics Canada, Tables 17-10-0009-01, 17-10-0020-01, 17-10-0040-01 and 17-10-0059-01



### Natural Increase

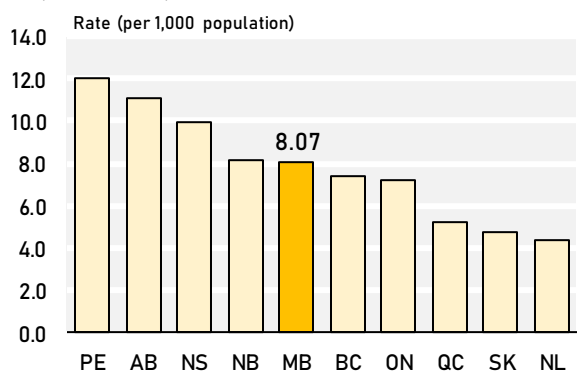
During the first quarter of 2023, Manitoba recorded a gain of 791 people due to natural increase (births minus deaths). Over the twelve months ending March 31, 2023, our natural increase was 3,257 people, 5.06% higher than the twelve months prior.

### Total Net Migration

Combining all the migration components together, Manitoba had a total net inflow of 11,607 migrants during the first quarter of 2023. Our quarterly rate of 8.07 migrants per thousand population ranked fifth among provinces. Manitoba's twelve-month total net inflow was 38,966 migrants, 3.8 times more than the previous twelve months.

### Quarterly Total Net Migration Rate

Q1 (Jan 1 to Mar 31)



Source: Statistics Canada, Tables 17-10-0009-01, 17-10-0020-01, 17-10-0023-01 and 17-10-0040-01



## Net International Migration

During the first quarter of 2023, Manitoba gained 8,606 residents through net international migration (immigrants minus emigrants). Our quarterly inflow of 8,846 immigrants resulted in a rate of 6.15 immigrants per thousand population, above Canada's rate of 3.66 and second among provinces. During the twelve months ending March 31, 2023, Manitoba welcomed 25,303 immigrants, 37.85% more than the twelve months prior.

## Other International Migration

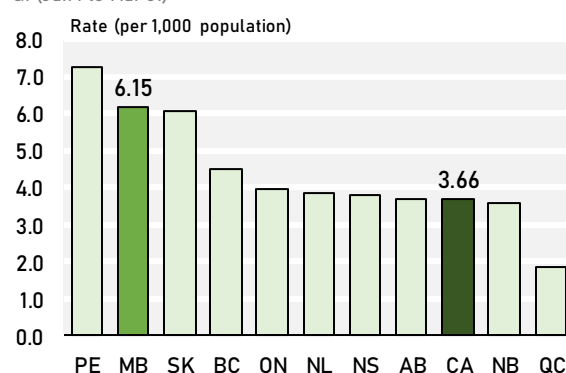
Manitoba experienced a net gain of 5,688 other international migrants during the first quarter of 2023, resulting in a rate of 3.96 migrants per thousand population. Our net increase of 26,030 migrants between April 1, 2022 and March 31, 2023 was 19.1 times higher than the net figure for the preceding twelve months. Significant increases in the number of International Mobility Program (IMP) permit holders classified by Immigration, Refugees and Citizenship Canada (IRCC) as Other IMP Participants, which includes Public Policies such as the Canada-Ukraine Authorization for Emergency Travel (CUAET), fueled most of the growth.

## Net Interprovincial Migration

Manitoba had a net interprovincial outflow of 2,687 migrants during the first quarter of 2023. Our quarterly rate of -1.87 migrants per thousand population ranked ninth among provinces. The province's twelve-month net interprovincial outflow was 11,118 migrants, 33.39% more than the net figure for the preceding twelve months.

## Quarterly Immigration Rate

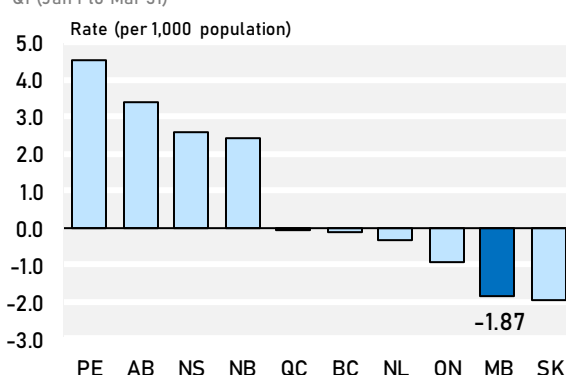
Q1 (Jan 1 to Mar 31)



Source: Statistics Canada, Tables 17-10-0009-01 and 17-10-0040-01

## Quarterly Net Interprovincial Migration Rate

Q1 (Jan 1 to Mar 31)



Source: Statistics Canada, Tables 17-10-0009-01 and 17-10-0020-01

## Manitoba Net Interprovincial Migration - Gains and Losses

| Manitoba Net Interprovincial Migration - Gains and Losses |               |               |               |                |               |                 |
|---|---------------|---------------|---------------|----------------|---------------|-----------------|
|   | Q1-2023       | Q1-2022       | Change        | Q2-2022        | Q2-2021       | Change          |
|   | (1)           | (2)           | (1)-(2)       | to Q1-2023     | to Q1-2022    | (3)-(4)         |
| NL  | 16            | -37           | 53 ↑          | -45            | -52           | 7 ↑             |
| PE  | -26           | -17           | -9 ↓          | -24            | -22           | -2 ↓            |
| NS  | -42           | 17            | -59 ↓         | -178           | -148          | -30 ↓           |
| NB  | -5            | -97           | 92 ↑          | -42            | -237          | 195 ↑           |
| QC  | -153          | 93            | -246 ↓        | -400           | -233          | -167 ↓          |
| ON  | -45           | 206           | -251 ↓        | -1,402         | -233          | -1,169 ↓        |
| SK  | -74           | -135          | 61 ↑          | -625           | -256          | -369 ↓          |
| AB  | -1,262        | -1,220        | -42 ↓         | -4,995         | -4,081        | -914 ↓          |
| BC  | -1,116        | -495          | -621 ↓        | -3,503         | -3,043        | -460 ↓          |
| YT  | 0             | -8            | 8 ↑           | 28             | -6            | 34 ↑            |
| NT  | 13            | 34            | -21 ↓         | 47             | 51            | -4 ↓            |
| NU  | 7             | -42           | 49 ↑          | 21             | -75           | 96 ↑            |
| <b>TOTAL</b>  | <b>-2,687</b> | <b>-1,701</b> | <b>-986 ↓</b> | <b>-11,118</b> | <b>-8,335</b> | <b>-2,783 ↓</b> |

Source: Statistics Canada, Table 17-10-0045-01

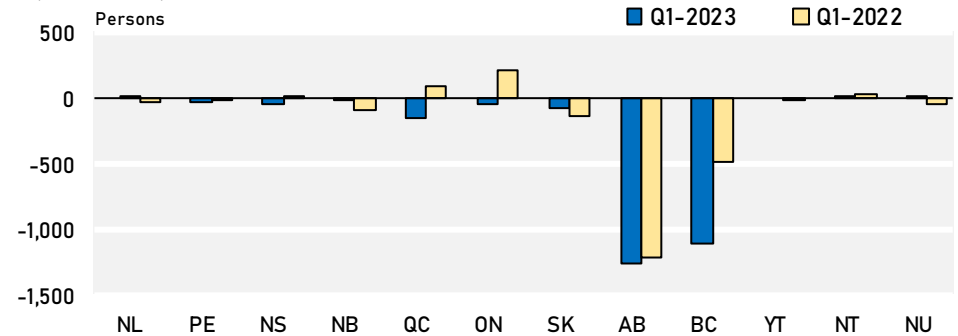
### Quarterly

During the first quarter of 2023, Manitoba had net interprovincial migration gains from three jurisdictions. The largest net inflow was from Newfoundland, while the largest outflow was to Alberta.

Compared to the same quarter twelve months ago, Manitoba's net interchange has improved with five jurisdictions.

### Manitoba Net Interprovincial Migration - Gains and Losses

Q1 (Jan 1 to Mar 31)



Source: Statistics Canada, Table 17-10-0045-01



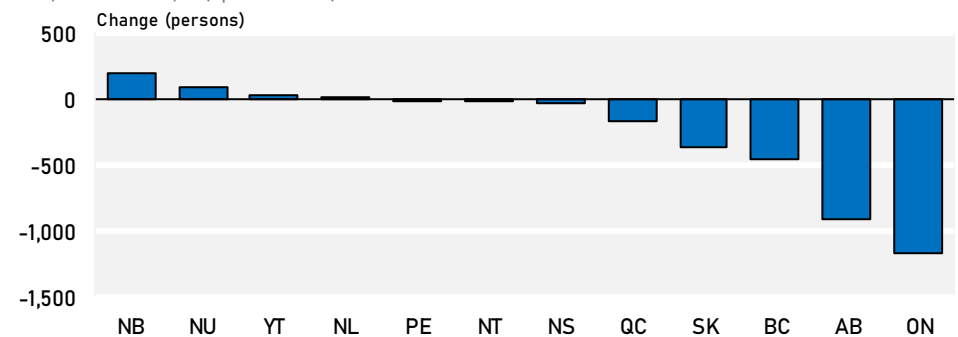
### Twelve-month

Over the twelve months ending March 31, 2023, Manitoba had net migration gains from three jurisdictions. The largest net inflow was from Northwest Territories, while the largest outflow was to Alberta.

Compared to the previous twelve month period, Manitoba's net interchange has improved with four jurisdictions.

### Manitoba Net Interprovincial Migration - Gains and Losses

2022/23 Minus 2021/22 (Apr 1 to Mar 31)



Source: Statistics Canada, Table 17-10-0045-01

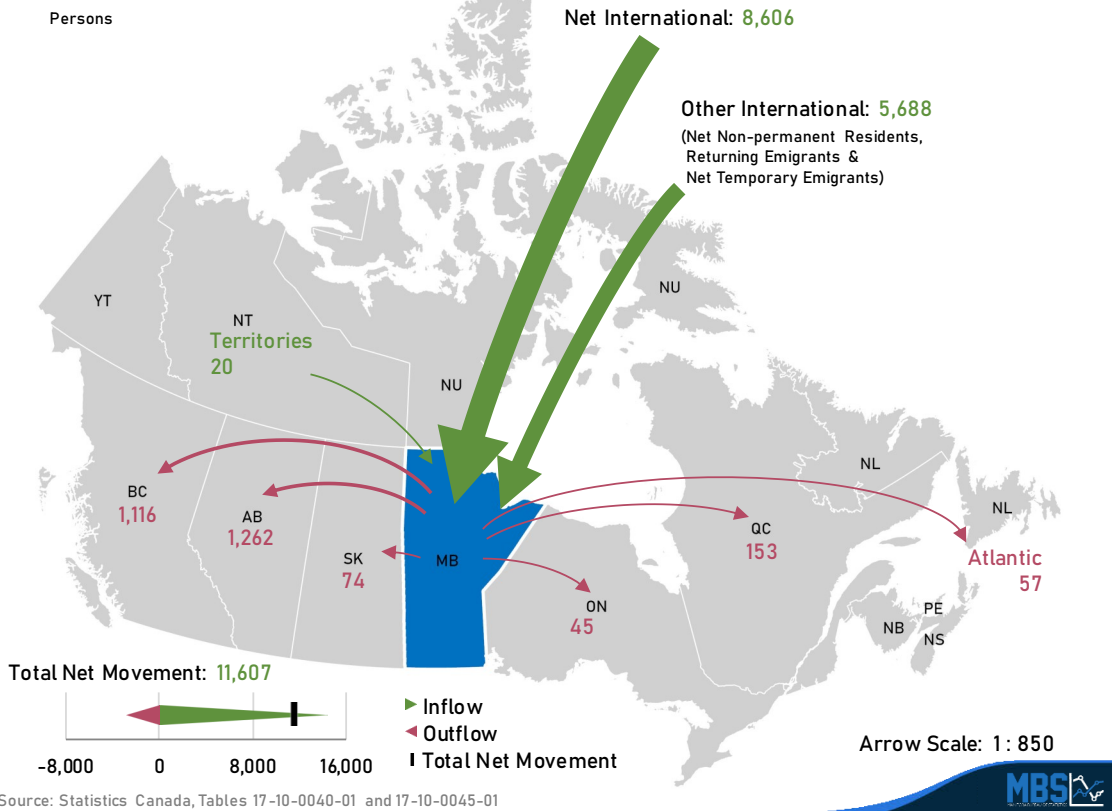


## Manitoba Net Migration - Gains and Losses

### Current Quarter

January 1, 2023 to March 31, 2023

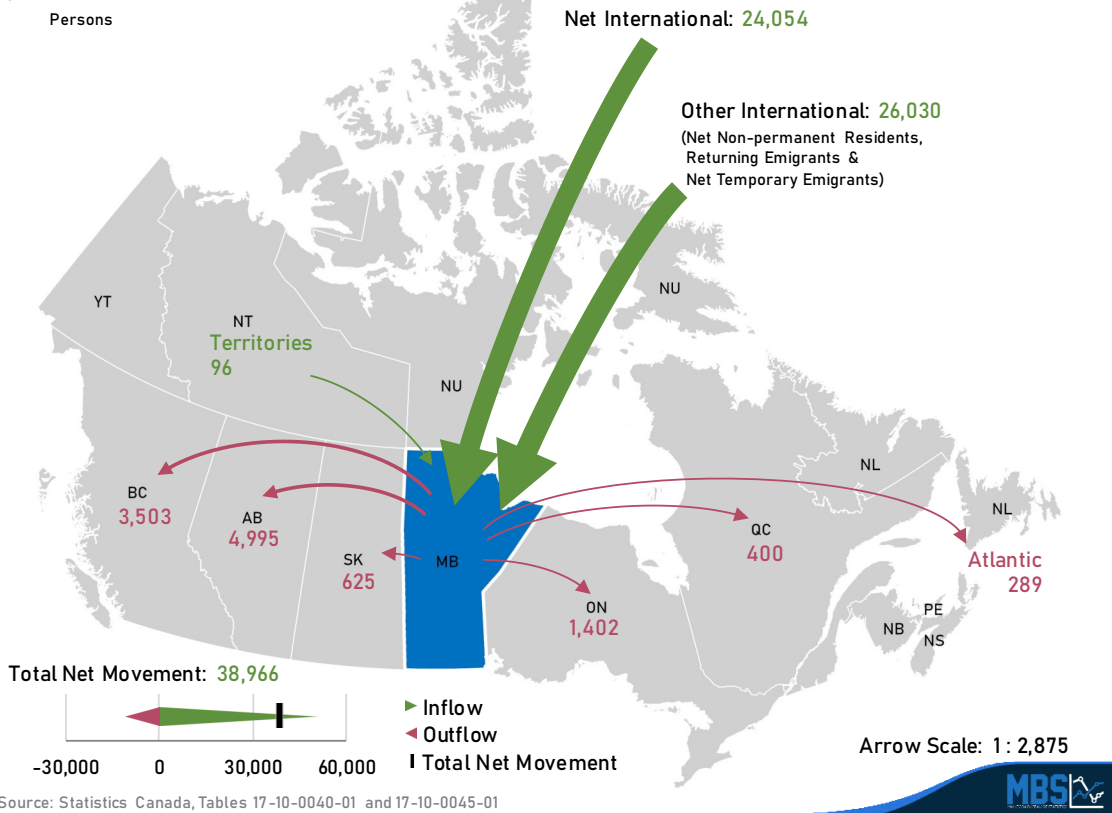
Persons



### Current Twelve-month period

April 1, 2022 to March 31, 2023

Persons



Note: Arrows are scaled, on a per chart basis, to reflect the relative net migration between Manitoba and other jurisdictions.

## Appendix Tables

### Manitoba Population and Demographic Estimates - 12-month (Persons)

| Apr 1 to<br>Mar 31 | Start<br>Population | Natural<br>Increase | Migration              |                      |                        |           | Component<br>Growth | Residual | Population |                   |
|--------------------|---------------------|---------------------|------------------------|----------------------|------------------------|-----------|---------------------|----------|------------|-------------------|
|                    |                     |                     | Net<br>Interprovincial | Net<br>International | Other<br>International | Total Net |                     |          | Growth     | End<br>Population |
| 2003/04            | 1,160,863           | 4,139               | -2,392                 | 5,335                | 1,203                  | 4,146     | 8,285               | 1,199    | 9,484      | 1,170,347         |
| 2004/05            | 1,170,347           | 3,749               | -5,087                 | 6,178                | 902                    | 1,993     | 5,742               | 1,196    | 6,938      | 1,177,285         |
| 2005/06            | 1,177,285           | 4,479               | -8,868                 | 6,674                | 868                    | -1,326    | 3,153               | 1,197    | 4,350      | 1,181,635         |
| 2006/07            | 1,181,635           | 4,778               | -6,132                 | 8,528                | 1,241                  | 3,637     | 8,415               | -3,620   | 4,795      | 1,186,430         |
| 2007/08            | 1,186,430           | 5,470               | -3,823                 | 9,001                | 1,893                  | 7,071     | 12,541              | -4,309   | 8,232      | 1,194,662         |
| 2008/09            | 1,194,662           | 5,634               | -3,819                 | 10,231               | 1,602                  | 8,014     | 13,648              | -4,296   | 9,352      | 1,204,014         |
| 2009/10            | 1,204,014           | 6,003               | -2,098                 | 12,424               | 564                    | 10,890    | 16,893              | -4,297   | 12,596     | 1,216,610         |
| 2010/11            | 1,216,610           | 5,397               | -3,281                 | 14,032               | 602                    | 11,353    | 16,750              | -4,297   | 12,453     | 1,229,063         |
| 2011/12            | 1,229,063           | 5,795               | -4,038                 | 14,593               | 1,390                  | 11,945    | 17,740              | -1,111   | 16,629     | 1,245,692         |
| 2012/13            | 1,245,692           | 6,197               | -4,177                 | 11,158               | 2,692                  | 9,673     | 15,870              | -728     | 15,142     | 1,260,834         |
| 2013/14            | 1,260,834           | 6,160               | -6,761                 | 12,638               | 2,264                  | 8,141     | 14,301              | -728     | 13,573     | 1,274,407         |
| 2014/15            | 1,274,407           | 5,704               | -6,976                 | 13,787               | 1,900                  | 8,711     | 14,415              | -728     | 13,687     | 1,288,094         |
| 2015/16            | 1,288,094           | 6,403               | -5,009                 | 14,368               | 4,563                  | 13,922    | 20,325              | -730     | 19,595     | 1,307,689         |
| 2016/17            | 1,307,689           | 5,927               | -5,424                 | 14,779               | 5,519                  | 14,874    | 20,801              | -78      | 20,723     | 1,328,412         |
| 2017/18            | 1,328,412           | 6,069               | -6,431                 | 12,720               | 6,285                  | 12,574    | 18,643              | 0        | 18,643     | 1,347,055         |
| 2018/19            | 1,347,055           | 6,077               | -7,211                 | 13,789               | 4,957                  | 11,535    | 17,612              | 0        | 17,612     | 1,364,667         |
| 2019/20            | 1,364,667           | 5,487               | -8,838                 | 17,492               | 330                    | 8,984     | 14,471              | 0        | 14,471     | 1,379,138         |
| 2020/21            | 1,379,138           | 4,479               | -3,454                 | 8,289                | 274                    | 5,109     | 9,588               | 0        | 9,588      | 1,388,726         |
| 2021/22            | 1,388,726           | 3,100               | -8,335                 | 17,110               | 1,366                  | 10,141    | 13,241              | 0        | 13,241     | 1,401,967         |
| 2022/23            | 1,401,967           | 3,257               | -11,118                | 24,054               | 26,030                 | 38,966    | 42,223              | 0        | 42,223     | 1,444,190         |
| 2023/24            | 1,444,190           |                     |                        |                      |                        |           |                     |          |            |                   |

Source: Statistics Canada, Tables 17-10-0009-01, 17-10-0020-01, 17-10-0040-01 and 17-10-0059-01



### Manitoba Population and Demographic Estimates - Quarterly (Persons)

| Start of<br>Quarter | Start<br>Population | Natural<br>Increase | Migration              |                      |                        |           | Component<br>Growth | Residual | Population |                   |
|---------------------|---------------------|---------------------|------------------------|----------------------|------------------------|-----------|---------------------|----------|------------|-------------------|
|                     |                     |                     | Net<br>Interprovincial | Net<br>International | Other<br>International | Total Net |                     |          | Growth     | End<br>Population |
| Apr 1, 2018         | 1,347,055           | 1,701               | -2,074                 | 4,171                | 1,972                  | 4,069     | 5,770               | 0        | 5,770      | 1,352,825         |
| Jul 1, 2018         | 1,352,825           | 1,894               | -2,230                 | 3,469                | 2,010                  | 3,249     | 5,143               | 0        | 5,143      | 1,357,968         |
| Oct 1, 2018         | 1,357,968           | 1,286               | -1,409                 | 3,146                | 829                    | 2,566     | 3,852               | 0        | 3,852      | 1,361,820         |
| Jan 1, 2019         | 1,361,820           | 1,196               | -1,498                 | 3,003                | 146                    | 1,651     | 2,847               | 0        | 2,847      | 1,364,667         |
| Apr 1, 2019         | 1,364,667           | 1,490               | -2,214                 | 5,103                | 908                    | 3,797     | 5,287               | 0        | 5,287      | 1,369,954         |
| Jul 1, 2019         | 1,369,954           | 1,740               | -3,229                 | 5,718                | -338                   | 2,151     | 3,891               | 0        | 3,891      | 1,373,845         |
| Oct 1, 2019         | 1,373,845           | 1,136               | -1,753                 | 3,889                | 131                    | 2,267     | 3,403               | 0        | 3,403      | 1,377,248         |
| Jan 1, 2020         | 1,377,248           | 1,121               | -1,642                 | 2,782                | -371                   | 769       | 1,890               | 0        | 1,890      | 1,379,138         |
| Apr 1, 2020         | 1,379,138           | 1,417               | -1,673                 | 1,368                | -362                   | -667      | 750                 | 0        | 750        | 1,379,888         |
| Jul 1, 2020         | 1,379,888           | 1,583               | -404                   | 2,029                | -1,524                 | 101       | 1,684               | 0        | 1,684      | 1,381,572         |
| Oct 1, 2020         | 1,381,572           | 506                 | -893                   | 1,724                | 1,116                  | 1,947     | 2,453               | 0        | 2,453      | 1,384,025         |
| Jan 1, 2021         | 1,384,025           | 973                 | -484                   | 3,168                | 1,044                  | 3,728     | 4,701               | 0        | 4,701      | 1,388,726         |
| Apr 1, 2021         | 1,388,726           | 1,064               | -1,023                 | 2,388                | 824                    | 2,189     | 3,253               | 0        | 3,253      | 1,391,979         |
| Jul 1, 2021         | 1,391,979           | 1,232               | -3,281                 | 4,273                | 1,227                  | 2,219     | 3,451               | 0        | 3,451      | 1,395,430         |
| Oct 1, 2021         | 1,395,430           | 242                 | -2,330                 | 5,517                | -556                   | 2,631     | 2,873               | 0        | 2,873      | 1,398,303         |
| Jan 1, 2022         | 1,398,303           | 562                 | -1,701                 | 4,932                | -129                   | 3,102     | 3,664               | 0        | 3,664      | 1,401,967         |
| Apr 1, 2022         | 1,401,967           | 745                 | -2,891                 | 5,362                | 4,040                  | 6,511     | 7,256               | 0        | 7,256      | 1,409,223         |
| Jul 1, 2022         | 1,409,223           | 1,226               | -3,188                 | 5,941                | 7,026                  | 9,779     | 11,005              | 0        | 11,005     | 1,420,228         |
| Oct 1, 2022         | 1,420,228           | 495                 | -2,352                 | 4,145                | 9,276                  | 11,069    | 11,564              | 0        | 11,564     | 1,431,792         |
| Jan 1, 2023         | 1,431,792           | 791                 | -2,687                 | 8,606                | 5,688                  | 11,607    | 12,398              | 0        | 12,398     | 1,444,190         |
| Apr 1, 2023         | 1,444,190           |                     |                        |                      |                        |           |                     |          |            |                   |

Source: Statistics Canada, Tables 17-10-0009-01, 17-10-0020-01, 17-10-0040-01 and 17-10-0059-01



## Notes to Readers

### Population Estimate

Estimates are derived from Census counts, but are adjusted for net Census undercoverage, incompletely enumerated Indian reserves and demographic growth.

### Per '000 Population

A **rate per thousand population** is calculated by dividing the number of events for a time period by the population at the mid-point of the period, then multiplying by 1,000. These crude rates allow for quick comparisons among characteristics or jurisdictions.

In this document, the mid-point population is the average of population estimates for the start and end of the quarter.

### Other International Migration

Other International Migration groups together the temporary international migration flows and is comprised of the net change in Non-permanent Residents, plus Returning Emigrants, less Net Temporary Emigrants.

### Non-permanent Residents

The majority of **Non-permanent Residents** are students and temporary workers, while the remainder are refugee status claimants and non-Canadian born dependents of refugee claimants or permit holders.

### Residual

**Residual deviation** is obtained by distributing the error of closure linearly throughout the intercensal period.

The **error of closure** is defined as the difference between the final postcensal population estimates on Census Day and the most recent Census counts (adjusted for Census net undercoverage and incompletely enumerated reserves and settlements).

A positive error of closure means that the postcensal population estimates have overestimated the population. A negative residual would then be required to correct the overestimation.

### Gains and Losses

Manitoba is considered to have a **net gain** when the number of people moving in from a given province or territory is greater than the number moving out, otherwise the **net interchange** is considered to be a **loss**.

**Example:** Say 28 people moved from Manitoba to Ontario and, over the same time period, 10 people moved from Ontario to Manitoba. Our resulting net interchange with Ontario would be a loss of 18 people.

### Comparability over time

Estimates of population and demographic components may not be fully comparable over time due to seasonal effects, changes in methodologies and completeness of source data.

## Coming Up

### Next Release

September 27, 2023

Demographic Estimates Quarterly for July 2023

## Related Links

For more information please visit the following websites:

Statistics Canada: <http://www23.statcan.gc.ca/imdb/p2SV.pl?Function=getSurvey&SDDS=3601>

Manitoba Bureau of Statistics: <https://www.gov.mb.ca/mbs/moreinfo.html?id=16>

Contact: [mbs@gov.mb.ca](mailto:mbs@gov.mb.ca)