

DEMOGRAPHIC ESTIMATES QUARTERLY

July 2023

Highlights

Manitoba's total population was estimated at 1,454,902 residents as of July 1, 2023, up 11,027 individuals from the April 1, 2023 estimate. On a twelve-month basis (compared to July 1, 2022) Manitoba's population increased by 41,493 people, or 2.94%. Manitoba's twelve-month net international and other international levels are modern-day records, however net interprovincial outflows not seen since 1989/90 hamper growth.

Manitoba Quarterly Population and Demographic Estimates

Demographic Component	Estimate (Persons)	Per '000 Population
Start Population (Apr 1, 2023)	1,443,875	
Natural Increase (Net)	1,410	0.97
Births	4,350	3.00
Deaths	2,940	2.03
Total Net Migration	9,617	6.64
Net Interprovincial	-2,899	-2.00
In	4,519	3.12
Out	7,418	5.12
Net International	5,263	3.63
Immigration	5,884	4.06
Emigration	621	0.43
Other International	7,253	5.00
Net Non-permanent Residents	6,750	4.66
Returning Emigrants	503	0.35

End Population (Jul 1, 2023) **1,454,902**

Source: Statistics Canada, Tables 17-10-0009-01, 17-10-0020-01, 17-10-0040-01 and 17-10-0059-01

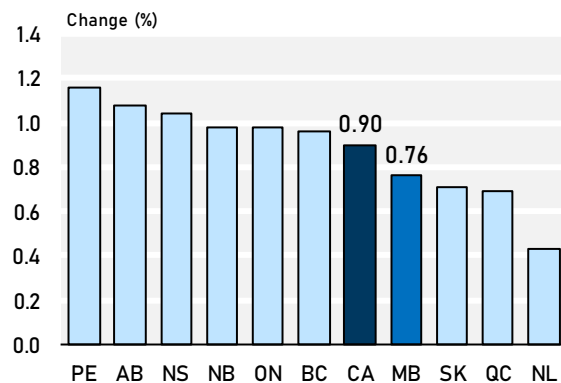
Population Growth

Quarterly growth

Over the three months ending July 2023, Manitoba's population increased by an estimated 11,027 people. Our quarterly growth rate of 0.76% was weaker than Canada's 0.90%, and seventh provincially.

Population Growth, Quarter-over-quarter

Apr 1, 2023 to Jul 1, 2023



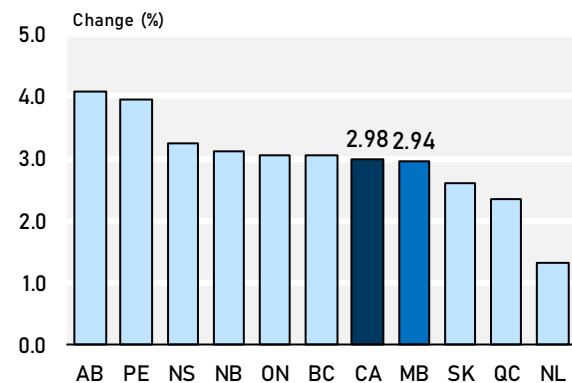
Source: Statistics Canada, Table 17-10-0009-01

Twelve-month growth

Manitoba's population increased by an estimated 41,493 people between July 2022 and July 2023, a modern-day record. The province's twelve-month growth rate of 2.94% was weaker than Canada's 2.98%, and seventh provincially.

Population Growth, Year-over-year

Jul 1, 2022 to Jul 1, 2023



Source: Statistics Canada, Table 17-10-0009-01

Population Estimates - Manitoba and Canada

	Manitoba	Canada
Estimate (Persons)		
Jul 1, 2022	1,413,409	38,939,056
Apr 1, 2023	1,443,875	39,739,633
Jul 1, 2023	1,454,902	40,097,761
Change (Persons)		
Jul 1, 2022 to Jul 1, 2023	41,493	1,158,705
Apr 1, 2023 to Jul 1, 2023	11,027	358,128
Change (%)		
Jul 1, 2022 to Jul 1, 2023	2.94	2.98
Apr 1, 2023 to Jul 1, 2023	0.76	0.90

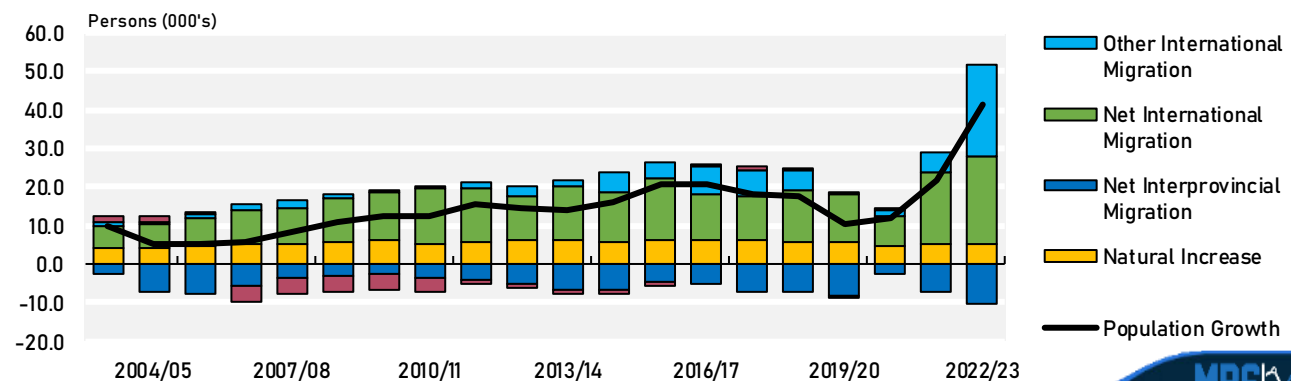
Source: Statistics Canada, Table 17-10-0009-01



Components of Growth

Twelve-month Growth, Component Contributions

Jul 1 to Jun 30



Source: Statistics Canada, Tables 17-10-0009-01, 17-10-0020-01, 17-10-0040-01 and 17-10-0059-01



Natural Increase

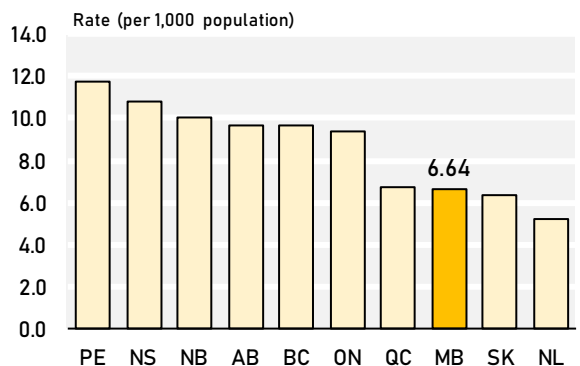
During the second quarter of 2023, Manitoba recorded a gain of 1,410 people due to natural increase (births minus deaths). Over the twelve months ending June 30, 2023, our natural increase was 5,152 people, 3.37% higher than the twelve months prior.

Total Net Migration

Combining all the migration components together, Manitoba had a total net inflow of 9,617 migrants during the second quarter of 2023. Our quarterly rate of 6.64 migrants per thousand population ranked eighth among provinces. Manitoba's twelve-month total net inflow was 36,341 migrants, 2.2 times more than the previous twelve months.

Quarterly Total Net Migration Rate

Q2 (Apr 1 to Jun 30)



Source: Statistics Canada, Tables 17-10-0009-01, 17-10-0020-01, 17-10-0023-01 and 17-10-0040-01



Net International Migration

During the second quarter of 2023, Manitoba gained 5,263 residents through net international migration (immigrants minus short-term and long-term emigrants). Our quarterly inflow of 5,884 immigrants resulted in a rate of 4.06 immigrants per thousand population, above Canada's rate of 2.95 and second among provinces. During the twelve months ending June 30, 2023, Manitoba welcomed 25,591 immigrants, 19.90% more than the twelve months prior.

Other International Migration

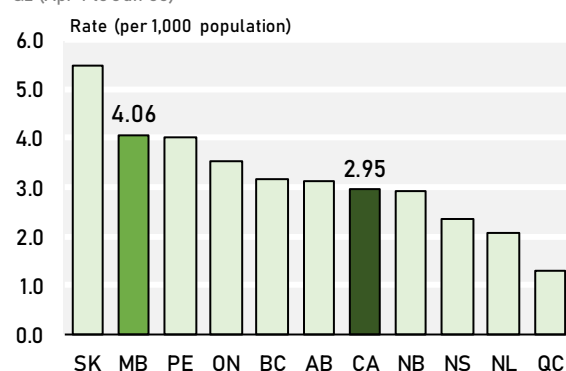
Manitoba experienced a net gain of 7,253 other international migrants during the second quarter of 2023, resulting in a rate of 5.00 migrants per thousand population. Our net increase of 23,653 migrants between July 1, 2022 and June 30, 2023 was 4.5 times higher than the net figure for the preceding twelve months. Significant increases in the number of International Mobility Program (IMP) permit holders classified by Immigration, Refugees and Citizenship Canada (IRCC) as Other IMP Participants, which includes Public Policies such as the Canada-Ukraine Authorization for Emergency Travel (CUAET), fueled most of the growth.

Net Interprovincial Migration

Manitoba had a net interprovincial outflow of 2,899 migrants during the second quarter of 2023. Our quarterly rate of -2.00 migrants per thousand population ranked tenth among provinces. The province's twelve-month net interprovincial outflow was 10,246 migrants, 37.51% more than the net figure for the preceding twelve months.

Quarterly Immigration Rate

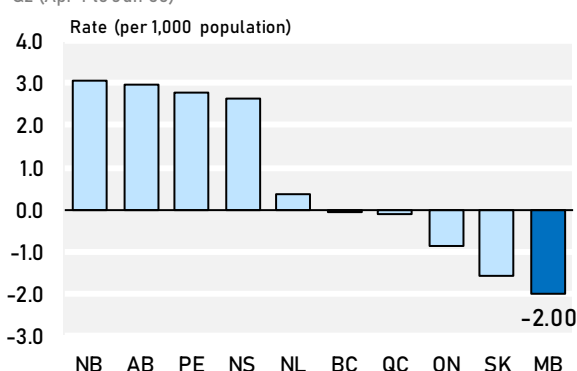
Q2 (Apr 1 to Jun 30)



Source: Statistics Canada, Tables 17-10-0009-01 and 17-10-0040-01

Quarterly Net Interprovincial Migration Rate

Q2 (Apr 1 to Jun 30)



Source: Statistics Canada, Tables 17-10-0009-01 and 17-10-0020-01

Manitoba Net Interprovincial Migration - Gains and Losses

Manitoba Net Interprovincial Migration - Gains and Losses						
	Q2-2023	Q2-2022	Change	Q3-2022	Q3-2021	Change
	(1)	(2)	(1)-(2)	to Q2-2023	to Q2-2022	(3)-(4)
	(3)	(4)				
NL	-53	-27	-26 ↓	-75	-42	-33 ↓
PE	-54	-4	-50 ↓	-66	-45	-21 ↓
NS	-61	-134	73 ↑	-103	-231	128 ↑
NB	-136	72	-208 ↓	-222	-107	-115 ↓
QC	109	259	-150 ↓	-270	391	-661 ↓
ON	-248	31	-279 ↓	-1,107	-393	-714 ↓
SK	-124	-193	69 ↑	-446	-307	-139 ↓
AB	-1,685	-984	-701 ↓	-5,108	-3,729	-1,379 ↓
BC	-643	-891	248 ↑	-2,869	-3,007	138 ↑
YT	-21	23	-44 ↓	-19	5	-24 ↓
NT	13	21	-8 ↓	12	18	-6 ↓
NU	4	21	-17 ↓	27	-4	31 ↑
TOTAL	-2,899	-1,806	-1,093 ↓	-10,246	-7,451	-2,795 ↓

Source: Statistics Canada, Table 17-10-0045-01

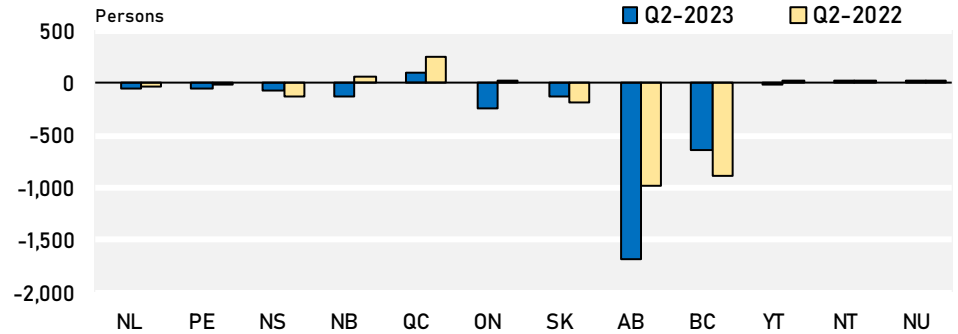
Quarterly

During the second quarter of 2023, Manitoba had net interprovincial migration gains from three jurisdictions. The largest net inflow was from Quebec, while the largest outflow was to Alberta.

Compared to the same quarter twelve months ago, Manitoba's net interchange has improved with three jurisdictions.

Manitoba Net Interprovincial Migration - Gains and Losses

Q2 (Apr 1 to Jun 30)



Source: Statistics Canada, Table 17-10-0045-01



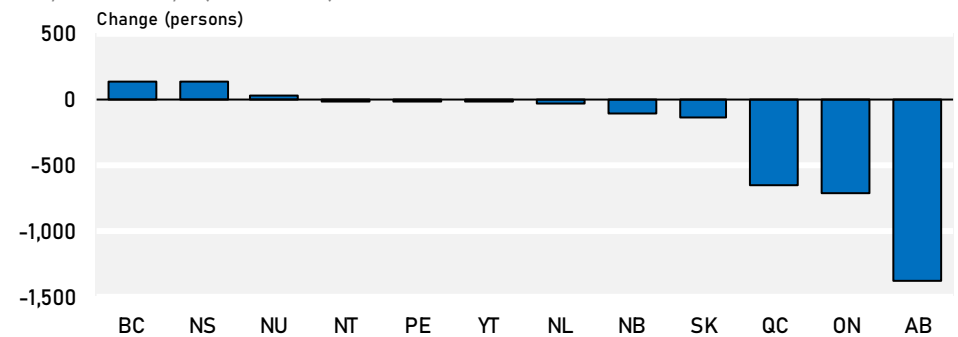
Twelve-month

Over the twelve months ending June 30, 2023, Manitoba had net migration gains from two jurisdictions. The largest net inflow was from Nunavut, while the largest outflow was to Alberta.

Compared to the previous twelve month period, Manitoba's net interchange has improved with three jurisdictions.

Manitoba Net Interprovincial Migration - Gains and Losses

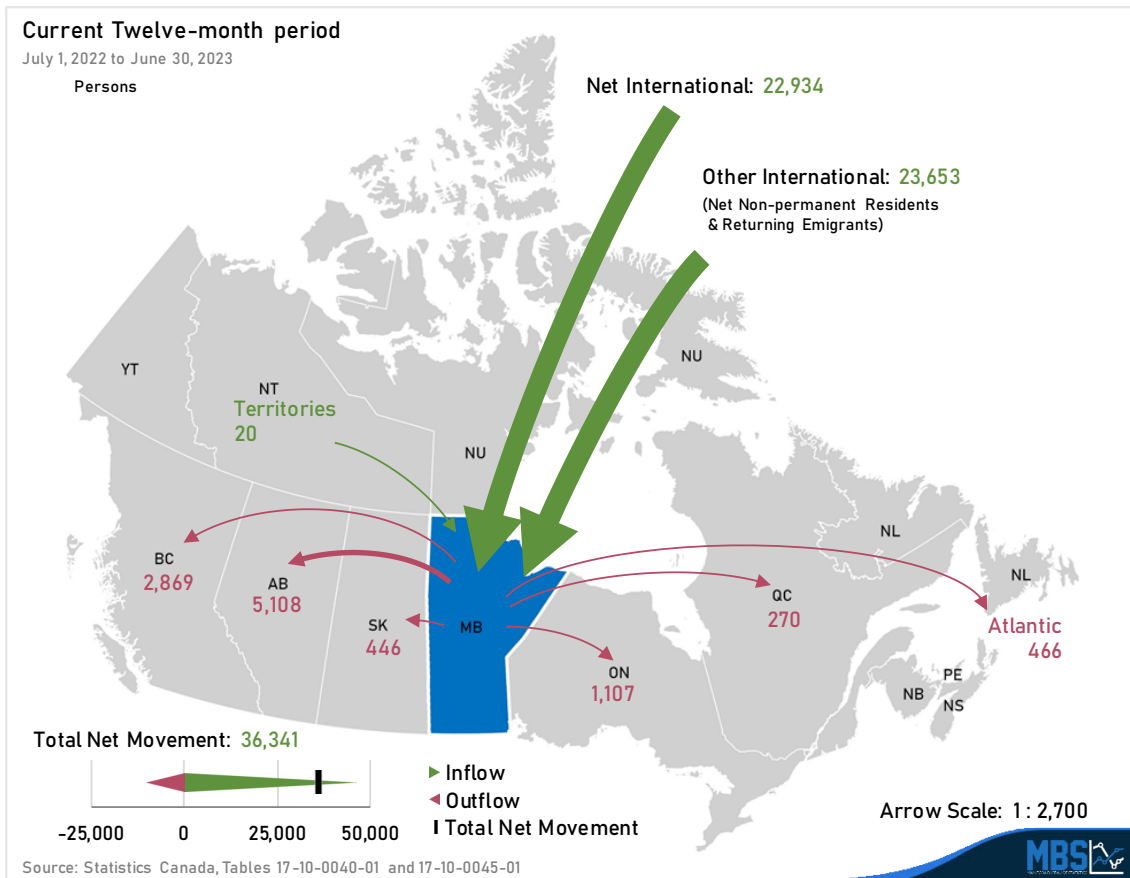
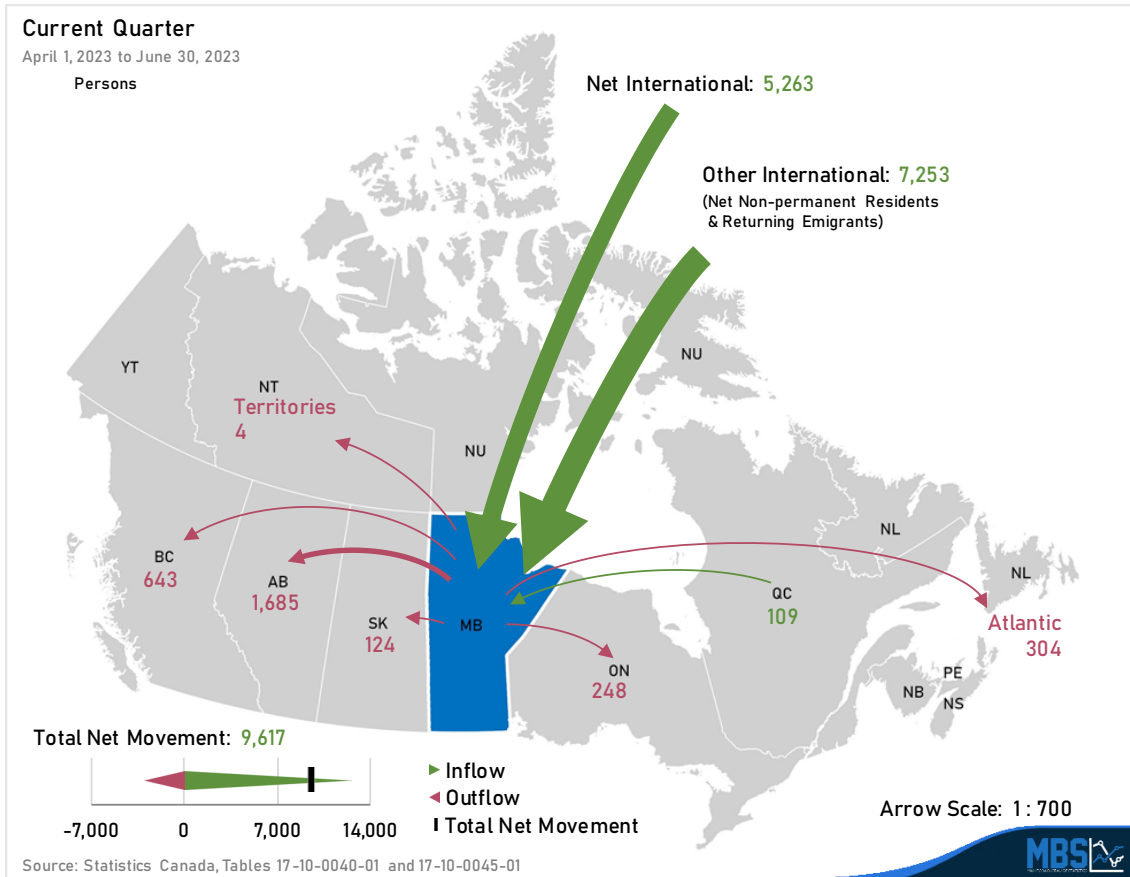
2022/23 Minus 2021/22 (Jul 1 to Jun 30)



Source: Statistics Canada, Table 17-10-0045-01



Manitoba Net Migration - Gains and Losses



Note: Arrows are scaled, on a per chart basis, to reflect the relative net migration between Manitoba and other jurisdictions.

Appendix Tables

Manitoba Population and Demographic Estimates - 12-month (Persons)

Jul 1 to Jun 30	Start Population	Natural Increase	Migration				Component Growth	Residual	Population	
			Net Interprovincial	Net International	Other International	Total Net			Growth	Population
2003/04	1,163,585	4,090	-2,565	5,801	1,120	4,356	8,446	1,197	9,643	1,173,228
2004/05	1,173,228	4,025	-7,227	6,211	831	-185	3,840	1,194	5,034	1,178,262
2005/06	1,178,262	4,636	-7,881	7,077	964	160	4,796	502	5,298	1,183,560
2006/07	1,183,560	4,881	-5,500	9,083	1,727	5,310	10,191	-4,305	5,886	1,189,446
2007/08	1,189,446	5,337	-3,703	8,996	2,007	7,300	12,637	-4,316	8,321	1,197,767
2008/09	1,197,767	5,761	-3,111	11,401	1,042	9,332	15,093	-4,305	10,788	1,208,555
2009/10	1,208,555	6,051	-2,412	12,459	434	10,481	16,532	-4,305	12,227	1,220,782
2010/11	1,220,782	5,348	-3,517	14,237	346	11,066	16,414	-3,843	12,571	1,233,353
2011/12	1,233,353	5,888	-4,212	13,557	1,582	10,927	16,815	-1,074	15,741	1,249,094
2012/13	1,249,094	6,292	-5,006	11,203	2,880	9,077	15,369	-1,070	14,299	1,263,393
2013/14	1,263,393	6,035	-6,851	13,909	2,010	9,068	15,103	-1,071	14,032	1,277,425
2014/15	1,277,425	5,792	-6,678	12,896	5,233	11,451	17,243	-1,070	16,173	1,293,598
2015/16	1,293,598	6,322	-4,881	15,683	4,251	15,053	21,375	-833	20,542	1,314,140
2016/17	1,314,140	5,936	-5,124	12,259	6,907	14,042	19,978	616	20,594	1,334,734
2017/18	1,334,734	6,195	-7,148	11,243	7,047	11,142	17,337	616	17,953	1,352,687
2018/19	1,352,687	5,867	-7,351	13,321	4,893	10,863	16,730	616	17,346	1,370,033
2019/20	1,370,033	5,394	-8,297	12,584	-200	4,087	9,481	618	10,099	1,380,132
2020/21	1,380,132	4,532	-2,804	7,869	1,665	6,730	11,262	530	11,792	1,391,924
2021/22	1,391,924	4,984	-7,451	18,733	5,219	16,501	21,485	0	21,485	1,413,409
2022/23	1,413,409	5,152	-10,246	22,934	23,653	36,341	41,493	0	41,493	1,454,902
2023/24	1,454,902									

Source: Statistics Canada, Tables 17-10-0009-01, 17-10-0020-01, 17-10-0040-01 and 17-10-0059-01



Manitoba Population and Demographic Estimates - Quarterly (Persons)

Start of Quarter	Start Population	Natural Increase	Migration				Component Growth	Residual	Population	
			Net Interprovincial	Net International	Other International	Total Net			Growth	Population
Jul 1, 2018	1,352,687	1,895	-2,232	2,991	2,360	3,119	5,014	155	5,169	1,357,856
Oct 1, 2018	1,357,856	1,286	-1,417	2,811	1,045	2,439	3,725	156	3,881	1,361,737
Jan 1, 2019	1,361,737	1,195	-1,494	2,747	329	1,582	2,777	152	2,929	1,364,666
Apr 1, 2019	1,364,666	1,491	-2,208	4,772	1,159	3,723	5,214	153	5,367	1,370,033
Jul 1, 2019	1,370,033	1,741	-3,243	5,227	-29	1,955	3,696	155	3,851	1,373,884
Oct 1, 2019	1,373,884	1,134	-1,751	3,578	282	2,109	3,243	156	3,399	1,377,283
Jan 1, 2020	1,377,283	1,114	-1,630	2,516	-156	730	1,844	153	1,997	1,379,280
Apr 1, 2020	1,379,280	1,405	-1,673	1,263	-297	-707	698	154	852	1,380,132
Jul 1, 2020	1,380,132	1,556	-398	1,838	-1,474	-34	1,522	155	1,677	1,381,809
Oct 1, 2020	1,381,809	455	-882	1,053	1,263	1,434	1,889	156	2,045	1,383,854
Jan 1, 2021	1,383,854	1,173	-493	2,809	1,117	3,433	4,606	151	4,757	1,388,611
Apr 1, 2021	1,388,611	1,348	-1,031	2,169	759	1,897	3,245	68	3,313	1,391,924
Jul 1, 2021	1,391,924	1,572	-2,700	3,801	1,863	2,964	4,536	0	4,536	1,396,460
Oct 1, 2021	1,396,460	923	-2,057	5,248	89	3,280	4,203	0	4,203	1,400,663
Jan 1, 2022	1,400,663	1,156	-888	4,612	-346	3,378	4,534	0	4,534	1,405,197
Apr 1, 2022	1,405,197	1,333	-1,806	5,072	3,613	6,879	8,212	0	8,212	1,413,409
Jul 1, 2022	1,413,409	1,582	-2,855	5,466	5,994	8,605	10,187	0	10,187	1,423,596
Oct 1, 2022	1,423,596	958	-2,168	3,852	6,436	8,120	9,078	0	9,078	1,432,674
Jan 1, 2023	1,432,674	1,202	-2,324	8,353	3,970	9,999	11,201	0	11,201	1,443,875
Apr 1, 2023	1,443,875	1,410	-2,899	5,263	7,253	9,617	11,027	0	11,027	1,454,902
Jul 1, 2023	1,454,902									

Source: Statistics Canada, Tables 17-10-0009-01, 17-10-0020-01, 17-10-0040-01 and 17-10-0059-01



Impact of Revisions

Effective with this release, Statistics Canada introduced significant revisions to its population estimates relative to previously published levels. The main purpose of the revisions was to benchmark population to the 2021 Census, however, changes to levels for demographic components were also made. The revised estimates cover the time period from first quarter (January 1) 2001 onward.

The net effect of the revisions showed less people overall living in Canada than originally estimated. For Manitoba, these revisions resulted in:

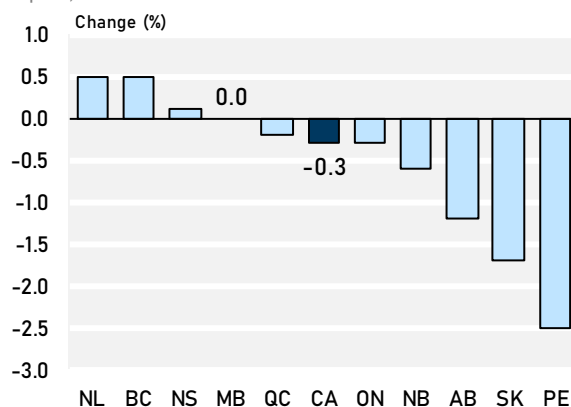
- A decrease in population of 315 individuals, compared to the decrease of 1,958 in 2018 as a result of the 2016 Census adjustments
- A decrease in the net loss of persons to other provinces
- Slightly lower immigration levels and higher net emigration (long-term and short-term emigrants minus long-term and short-term returning emigrants) levels
- Lower levels of the net change in non-permanent residents
- Higher levels of natural increase (births minus deaths), mostly due to significant increases in births levels

Revisions

Population and demographic estimates are revised once a year. Birth, death and migration components are revised as newer data becomes available. Additionally, after each Census, the postcensal estimates are revised to produce the intercensal estimates.

Impact of Population Revisions

April 1, 2023



Note: Percent change between Current (Sep. 2023) and Previously Published (Jun. 2023) estimates for April 1, 2023.

Source: Statistics Canada, Table 17-10-0009-01

Impact of Population Revisions, Canada and provinces

April 1	MB	CA	NL	PE	NS	NB	QC	ON	SK	AB	BC
Change Due to Revision (Number of People)											
2006	-3	-132	-2	1	1	0	-9	-123	3	7	-6
2007	-9	-50	-5	-1	33	-4	-447	362	-9	7	2
2008	-9	-126	-14	-11	69	-4	-391	210	-29	17	7
2009	-1	1,030	-12	-16	60	4	403	592	-39	7	7
2010	8	1,225	-7	-12	48	-1	337	818	-20	25	12
2011	-5	177	-1	0	3	2	26	147	0	1	1
2012	-808	-587	-105	-107	-429	-246	-1,160	1,860	-722	-2,629	3,882
2013	-1,141	-1,649	-136	-141	-583	-278	-1,912	1,322	-841	-2,517	4,687
2014	-1,493	-2,993	-184	-174	-738	-306	-2,499	473	-957	-2,422	5,402
2015	-1,844	-4,537	-204	-213	-891	-369	-3,095	-570	-1,070	-2,357	6,158
2016	108	104	20	8	89	28	144	107	138	588	-1,113
2017	-75	-872	1,156	-506	1,561	46	-7,055	5,823	-2,389	-3,036	3,761
2018	-139	5,240	2,529	-1,031	3,265	185	-13,091	15,493	-4,921	-5,262	8,533
2019	-1	14,297	3,862	-1,507	5,127	242	-18,899	26,060	-7,610	-6,885	14,395
2020	142	20,759	5,228	-1,989	7,129	420	-23,809	34,241	-10,371	-8,877	19,336
2021	-115	16,545	6,501	-2,532	8,708	473	-29,445	34,475	-13,329	-11,327	24,033
2022	3,230	38,647	6,206	-2,834	7,467	-1,084	-23,168	50,197	-14,972	-21,902	36,355
2023	-315	-118,847	2,581	-4,323	571	-4,996	-17,250	-43,557	-20,899	-58,543	28,924
Percent Change Due to Revision (%)											
2023	0.0 ↓	-0.3 ↓	0.5 ↑	-2.5 ↓	0.1 ↑	-0.6 ↓	-0.2 ↓	-0.3 ↓	-1.7 ↓	-1.2 ↓	0.5 ↑

Note: Change between Current (Sep. 2023) and Previously Published (Jun. 2023) estimates for April 1 of the year indicated.

Source: Statistics Canada, Tables 17-10-0009-01

Notes to Readers

Population Estimate

Estimates are derived from Census counts, but are adjusted for net Census undercoverage, incompletely enumerated Indian reserves and demographic growth.

Per '000 Population

A **rate per thousand population** is calculated by dividing the number of events for a time period by the population at the mid-point of the period, then multiplying by 1,000. These crude rates allow for quick comparisons among characteristics or jurisdictions.

In this document, the mid-point population is the average of population estimates for the start and end of the quarter.

Other International Migration

Other International Migration groups together some of the more temporary international migration flows and is comprised of the net change in Non-permanent Residents, plus long-term and short-term Returning Emigrants.

Non-permanent Residents

The majority of **Non-permanent Residents** are students and temporary workers, while the remainder are refugee status claimants and non-Canadian born dependents of refugee claimants or permit holders.

Residual

Residual deviation is obtained by distributing the error of closure linearly throughout the intercensal period.

The **error of closure** is defined as the difference between the final postcensal population estimates on Census Day and the most recent Census counts (adjusted for Census net undercoverage and incompletely enumerated reserves and settlements).

A positive error of closure means that the postcensal population estimates have overestimated the population. A negative residual would then be required to correct the overestimation.

Gains and Losses

Manitoba is considered to have a **net gain** when the number of people moving in from a given province or territory is greater than the number moving out, otherwise the **net interchange** is considered to be a **loss**.

Example: Say 28 people moved from Manitoba to Ontario and, over the same time period, 10 people moved from Ontario to Manitoba. Our resulting net interchange with Ontario would be a loss of 18 people.

Comparability over time

Estimates of population and demographic components may not be fully comparable over time due to seasonal effects, changes in methodologies and completeness of source data.

Revisions

Census Base

Effective with this release, Postcensal estimates are based on the 2021 Census counts adjusted for census net undercoverage and for incompletely enumerated reserves and settlements.

Emigration and Returning Emigration

Effective with this release, Emigrants and Returning Emigrants include both long-term and short-term migrants from July 2016 onward. Prior to July 2016, only long-term migrants are included.

Net Temporary Emigration

Effective with this release, from July 2016 onward, short-term Emigrants and short-term Returning Emigrants are included with Emigrants and Returning Emigrants respectively, and the Net Temporary Emigrant component is no longer being provided. Prior to July 2016, short-term Emigrants and short-term Returning Emigrants were accounted for as Net Temporary Emigrants, part of the Other International Migration component.

Non-permanent Residents

Effective with this release, from July 2021 onward, estimation methods for non-permanent residents have been adjusted to better account for open work permits without a province/territory of intended destination, permit processing delays and dependents of permit-holders.

Coming Up

Next Release

December 19, 2023

Demographic Estimates Quarterly for October 2023

Related Links

For more information please visit the following websites:

Statistics Canada: <http://www23.statcan.gc.ca/imdb/p2SV.pl?Function=getSurvey&SDDS=3601>

Manitoba Bureau of Statistics: <https://www.gov.mb.ca/mbs/moreinfo.html?id=16>

Contact: mbs@gov.mb.ca