

# Demographic Estimates by Age and Sex



July 2021

## Overview

Manitoba's total population was estimated at 1,383,765 residents as of July 1, 2021, an increase of 3,117 individuals, or 0.23%, from the July 1, 2020 estimate of 1,380,648. This growth was composed of a net inflow of 229 migrants from other jurisdictions, together with a net natural increase (births minus deaths) of 2,888 people.

## Median Age

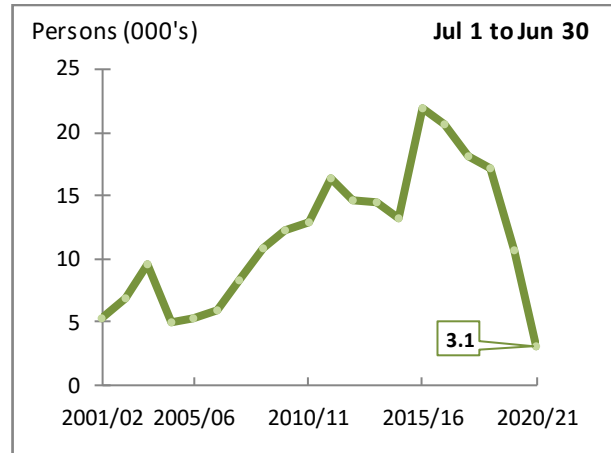
The median age of Manitobans is increasing. On July 1, 2021, the median age for Manitoba was 37.8 years, up 0.2 years from one year ago. Between 2008 and 2013, Manitoba's median age was constant at 37.8 years.

The median age for Canada increased to 41.1 years, up 0.2 years from the previous year. On July 1, 2021, Canada's median age was 3.3 years older than Manitoba's, the fourth largest difference in 20 years.

Manitoba was the youngest province, in terms of median age. Alberta ranked second with a median age of 37.9 years.

Next Release: September 2022.

## Annual Population Growth, Manitoba

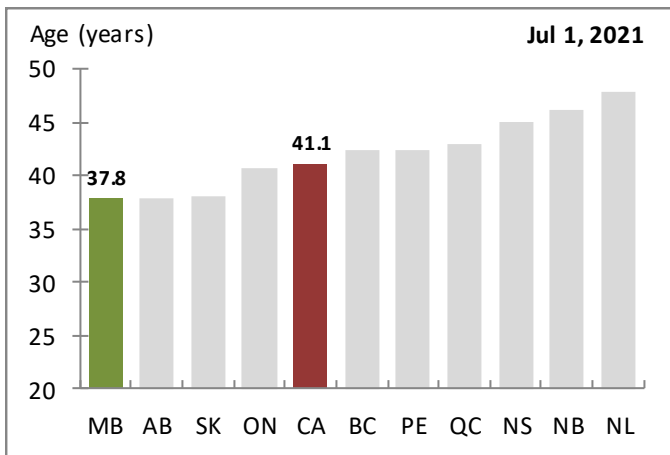


Source: Statistics Canada, Table 17-10-0005-01

## Median Age?

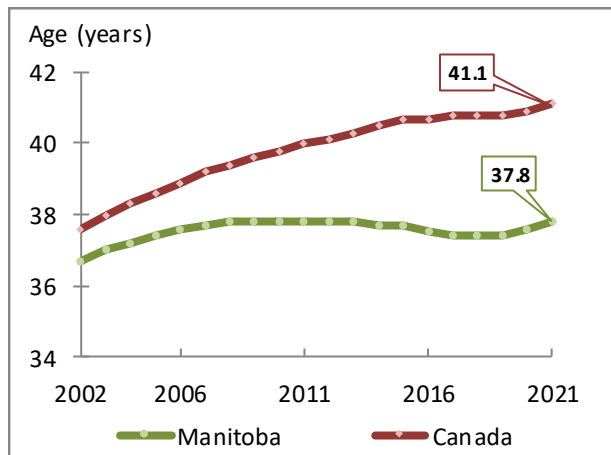
The median age of the population is the age at which half the people are older, and half are younger.

## Median Age, Canada and Provinces



Source: Statistics Canada, Table 17-10-0005-01

## Median Age, Manitoba and Canada (July 1)



Source: Statistics Canada, Table 17-10-0005-01

Statistics Canada's documentation: <http://www23.statcan.gc.ca/imdb/p2SV.pl?Function=getSurvey&SDDS=3604>

## Age Structure

### Children (14 and under)

The proportion of Manitobans aged 0 to 14 stood at 18.8%, down 0.1 percentage points from one year ago, and above Canada's share of 15.7%. Compared to other provinces, Manitoba had the second largest share of children aged 14 years and younger on July 1, 2021.

### Working age (15 to 64)

Individuals aged 15 to 64 comprised 64.8% of Manitobans in 2021, down 0.2 percentage points from last year, and below the national share (65.7%). Manitoba had the fifth largest share of working age individuals among provinces.

### Youths (15 to 24)

The share of Manitobans aged 15 to 24 has been declining slowly since its peak in 2007. Manitoba's 2021 share of 13.1% was down 0.2 percentage points from 2020, was second largest provincially and was higher than Canada's share (11.8%).

### Adults (25 to 64)

Over half, 51.6%, of Manitoba's population was between the ages of 25 and 64 in 2021, down 0.1 percentage points from one year ago. Manitoba's share was the third smallest amongst the provinces, and less than Canada's share of 54.0%.

## Population Estimates by Age Group - Manitoba

	14 & Under	15 to 64	15 to 24	25 to 64	65 & Over	65 to 74	75 to 84	85 & Over	Total	Median Age (Years)
<b>Estimate (Persons)</b>										
Jul 1, 2011	233,113	828,173	175,869	652,304	172,363	88,654	56,629	27,080	1,233,649	37.8
Jul 1, 2020	261,120	897,416	183,062	714,354	222,112	128,161	64,384	29,567	1,380,648	37.6
Jul 1, 2021	259,939	896,092	181,709	714,383	227,734	131,902	66,591	29,241	1,383,765	37.8
<b>Change (Persons)</b>										
Jul 1, 2011 to Jul 1, 2021	26,826	67,919	5,840	62,079	55,371	43,248	9,962	2,161	150,116	0.0
Jul 1, 2020 to Jul 1, 2021	-1,181	-1,324	-1,353	29	5,622	3,741	2,207	-326	3,117	0.2
<b>Change (%)</b>										
Jul 1, 2011 to Jul 1, 2021	11.51	8.20	3.32	9.52	32.12	48.78	17.59	7.98	12.17	0.00
Jul 1, 2020 to Jul 1, 2021	-0.45	-0.15	-0.74	0.00	2.53	2.92	3.43	-1.10	0.23	0.53
<b>Share of Total (Percent)</b>										
Jul 1, 2011	18.9	67.1	14.3	52.9	14.0	7.2	4.6	2.2		
Jul 1, 2020	18.9	65.0	13.3	51.7	16.1	9.3	4.7	2.1		
Jul 1, 2021	18.8	64.8	13.1	51.6	16.5	9.5	4.8	2.1		
<b>Change (Percentage Points)</b>										
Jul 1, 2011 to Jul 1, 2021	-0.1	-2.3	-1.2	-1.3	2.5	2.3	0.2	-0.1		
Jul 1, 2020 to Jul 1, 2021	-0.1	-0.2	-0.2	-0.1	0.4	0.2	0.1	0.0		

Note: Age achieved on most recent birthday, as at year indicated.

Source: Statistics Canada, Table 17-10-0005-01

### Seniors (65 and over)

Individuals aged 65 and over comprised 16.5% of Manitobans in 2021, up 0.4 percentage points from the previous year. Manitoba had the second smallest proportion of seniors among the provinces, and was 2.0 percentage points lower than the national-level share of 18.5%. Since 2009, Manitoba's share has trailed Canada's by an increasing amount every year.

### Young Seniors (65 to 74)

The share of Manitobans aged 65 to 74 has been increasing slowly since 2005. Manitoba's share reached 9.5% in 2021, up 0.2 percentage points from one year ago, second lowest provincially and below Canada's share of 10.7%.

### Middle Seniors (75 to 84)

Individuals aged 75 to 84 comprised 4.8% of Manitobans in 2021, up 0.1 percentage points from 2020. Manitoba tied for second smallest proportion of middle seniors among the provinces, and was lower than the national-level share of 5.6%.

### Elderly (85 and over)

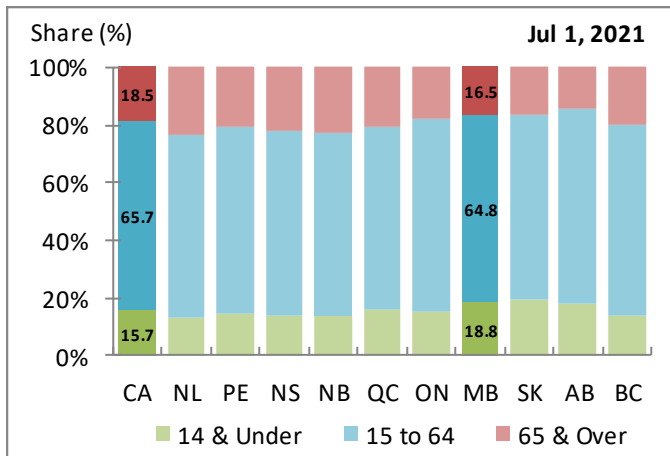
Manitoba's oldest age cohort, those aged 85 and over, made up 2.1% of the total population in 2021, unchanged from one year ago. Manitoba's share was third lowest provincially, and below Canada's share of 2.3%.

**Age Distribution - Canada and Provinces**

Jul 1, 2021	14 & Under	15 to 64	15 to 24	25 to 64	65 & Over	65 to 74	75 to 84	85 & Over	Median Age (Years)
<b>Share of Total (Percent)</b>									
MB	18.8	64.8	13.1	51.6	16.5	9.5	4.8	2.1	<b>37.8</b>
CA	15.7	65.7	11.8	54.0	18.5	10.7	5.6	2.3	41.1
NL	<b>13.2</b>	63.7	<b>10.6</b>	53.1	<b>23.1</b>	<b>14.2</b>	<b>6.8</b>	2.0	<b>47.8</b>
PE	14.9	64.9	<b>13.5</b>	<b>51.4</b>	20.2	12.1	5.9	2.2	42.4
NS	13.8	64.4	11.3	53.1	21.8	12.9	6.5	2.3	45.0
NB	14.2	<b>63.3</b>	10.7	52.6	22.5	13.4	6.6	<b>2.5</b>	46.2
QC	15.7	64.0	<b>10.6</b>	53.4	20.3	11.6	6.3	<b>2.5</b>	43.0
ON	15.3	66.6	12.5	54.1	18.1	10.3	5.5	2.3	40.7
SK	<b>19.4</b>	63.9	12.4	51.5	16.7	9.6	4.8	2.3	38.1
AB	18.4	<b>67.2</b>	12.0	<b>55.2</b>	<b>14.4</b>	<b>8.7</b>	<b>4.0</b>	<b>1.6</b>	37.9
BC	13.8	66.5	11.5	55.0	19.7	11.5	5.8	2.4	42.3

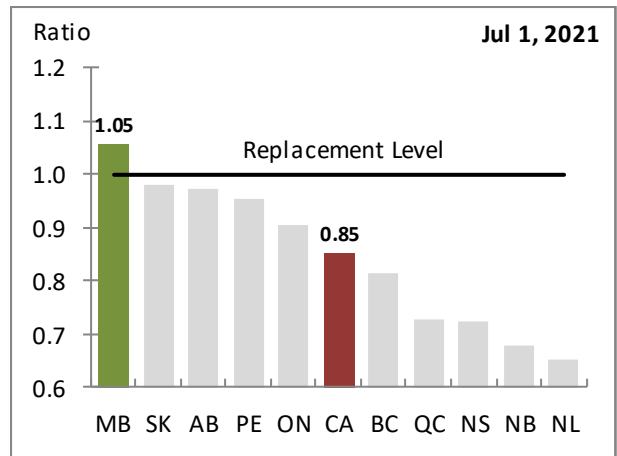
Source: Statistics Canada, Table 17-10-0005-01

**Age Distribution, Canada and Provinces**



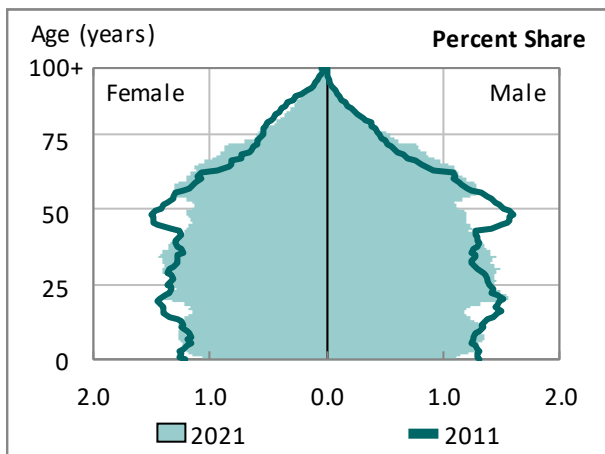
Source: Statistics Canada, Table 17-10-0005-01

**Ratio of 15-24 to 55-64, Canada and Provinces**



Source: Statistics Canada, Table 17-10-0005-01

**Population Pyramid, Manitoba**



Population is for July 1 of given year.  
Shares are based on individual totals for each sex.

Source: Statistics Canada, Table 17-10-0005-01

**Ratio?**

A ratio indicates how many times bigger one value is than the other. The closer to one a ratio is, the closer the values are to each other. A ratio of one indicates equality.

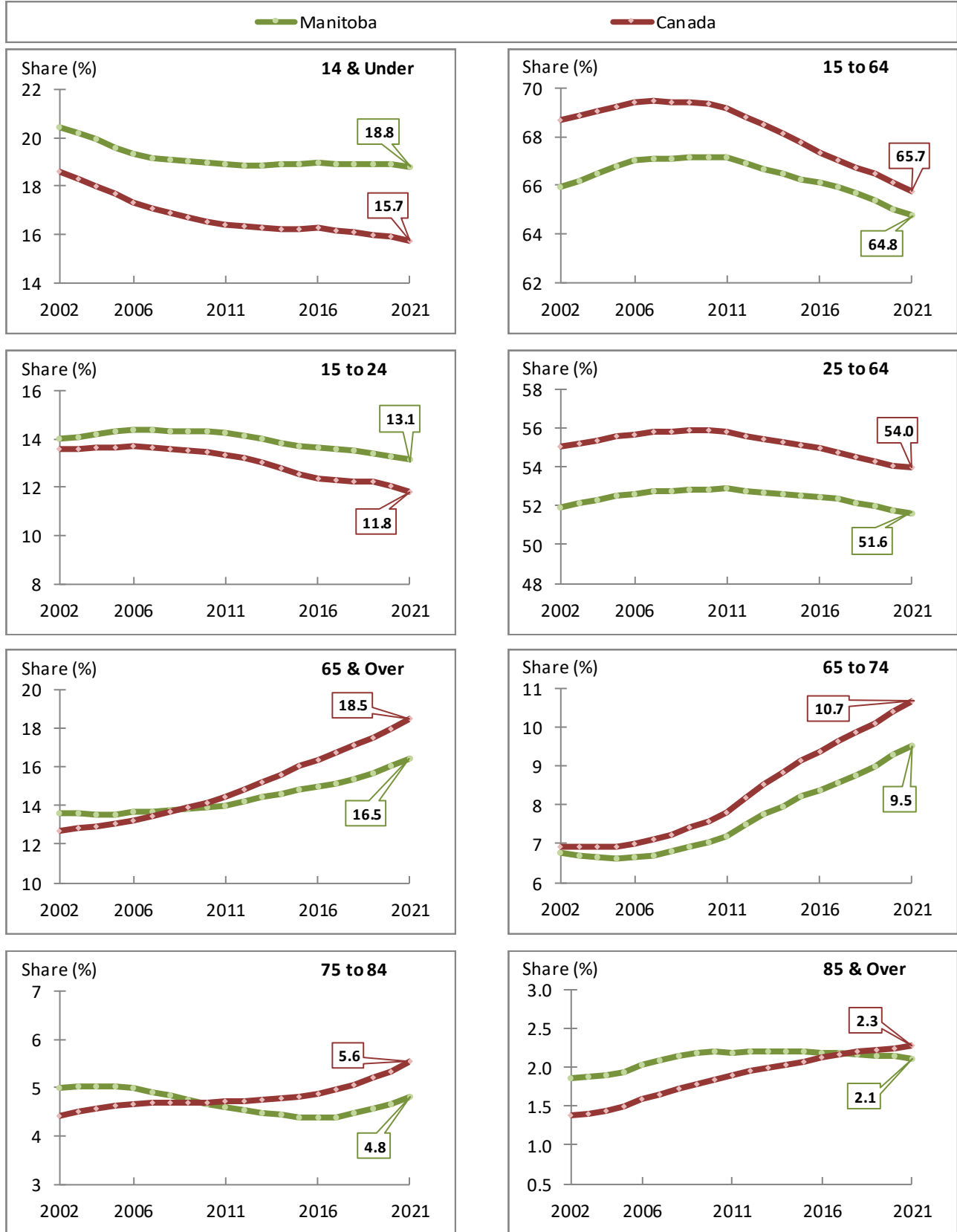
**Replacement level?**

Manitoba is the only province with more potential labour market entrants (aged 15 to 24) than potential retirees (aged 55 to 64). For every Manitoban aged 55 to 64, there are 1.05 individuals aged 15 to 24.

**Population Pyramid?**

A population pyramid is a graphical illustration showing the distribution of various age groups in a population. They are ideal for detecting changes or differences in population patterns.

Age Distribution Trends, Canada and Manitoba (July 1)



Source: Statistics Canada, Table 17-10-0005-01

## Migration

### Total Net

Over the twelve months ending June 30, 2021, Manitoba recorded a net inflow of 229 migrants from other jurisdictions. Manitoba's inflow was primarily shaped by a net inflow of 1,281 migrants 15 to 24 years of age, together with a net outflow of 459 migrants 25 to 34 years of age. Manitoba's total net inflow decreased by 11,080 people compared to ten years ago, influenced mainly by a decreased net inflow of individuals aged 14 years and under.

### Net Interprovincial

Manitoba recorded a net outflow of 9,685 migrants to other provinces in 2020/21. A net outflow of 2,854 migrants 25 to 34 years of age had the largest impact on Manitoba's interprovincial outflow. Compared to ten years ago, Manitoba's net interprovincial outflow increased by 6,168 people, comprised mostly of an increased net outflow of individuals 25 to 34 years of age.

### Net International

Manitoba recorded a net inflow of 9,482 migrants from other countries in 2020/21. Of these individuals, an estimated 3,477 were 25 to 34 years of age, 1,778 were 15 to 24 years of age, while 1,753 were aged 14 years and under. Manitoba's net international inflow decreased by 4,753 people compared to ten years ago, driven by a decreased net inflow of individuals aged 14 years and under.

### Migration by Age Group - Manitoba

	14 & Under	15 to 24	25 to 34	35 to 44	45 to 54	55 to 64	65 & Over	Total
<b>Estimate (Persons)</b>								
<b>2010/11</b>								
Total Net <sup>1</sup>	3,664	2,176	2,686	2,162	765	16	-160	11,309
Net Interprovincial	-501	-810	-778	-660	-331	-169	-268	-3,517
Net International	4,136	2,029	3,761	2,974	1,125	137	73	14,235
Other International <sup>2</sup>	29	957	-297	-152	-29	48	35	591
<b>2019/20</b>								
Total Net <sup>1</sup>	2,215	2,267	738	629	-82	-203	137	5,701
Net Interprovincial	-1,412	-1,307	-2,473	-1,786	-664	-441	-214	-8,297
Net International	3,130	2,044	4,999	2,562	637	243	249	13,864
Other International <sup>2</sup>	497	1,530	-1,788	-147	-55	-5	102	134
<b>2020/21</b>								
Total Net <sup>1</sup>	253	1,281	-459	-20	-308	-371	-147	229
Net Interprovincial	-1,663	-1,589	-2,854	-1,966	-752	-542	-319	-9,685
Net International	1,753	1,778	3,477	1,720	387	168	199	9,482
Other International <sup>2</sup>	163	1,092	-1,082	226	57	3	-27	432
<b>Change (Persons)</b>								
<b>2010/11 to 2020/21</b>								
Total Net <sup>1</sup>	-3,411	-895	-3,145	-2,182	-1,073	-387	13	-11,080
Net Interprovincial	-1,162	-779	-2,076	-1,306	-421	-373	-51	-6,168
Net International	-2,383	-251	-284	-1,254	-738	31	126	-4,753
Other International <sup>2</sup>	134	135	-785	378	86	-45	-62	-159
<b>2019/20 to 2020/21</b>								
Total Net <sup>1</sup>	-1,962	-986	-1,197	-649	-226	-168	-284	-5,472
Net Interprovincial	-251	-282	-381	-180	-88	-101	-105	-1,388
Net International	-1,377	-266	-1,522	-842	-250	-75	-50	-4,382
Other International <sup>2</sup>	-334	-438	706	373	112	8	-129	298

1) Sum of Net Interprovincial, Net International and Other International Migration.

2) Comprised of net non-permanent residents, plus returning emigrants, less net temporary emigrants.

Note: Components are for July 1 to June 30. Age achieved on most recent birthday, as at year indicated.

Source: Statistics Canada, Tables 17-10-0014-01 and 17-10-0015-01

**Other International**

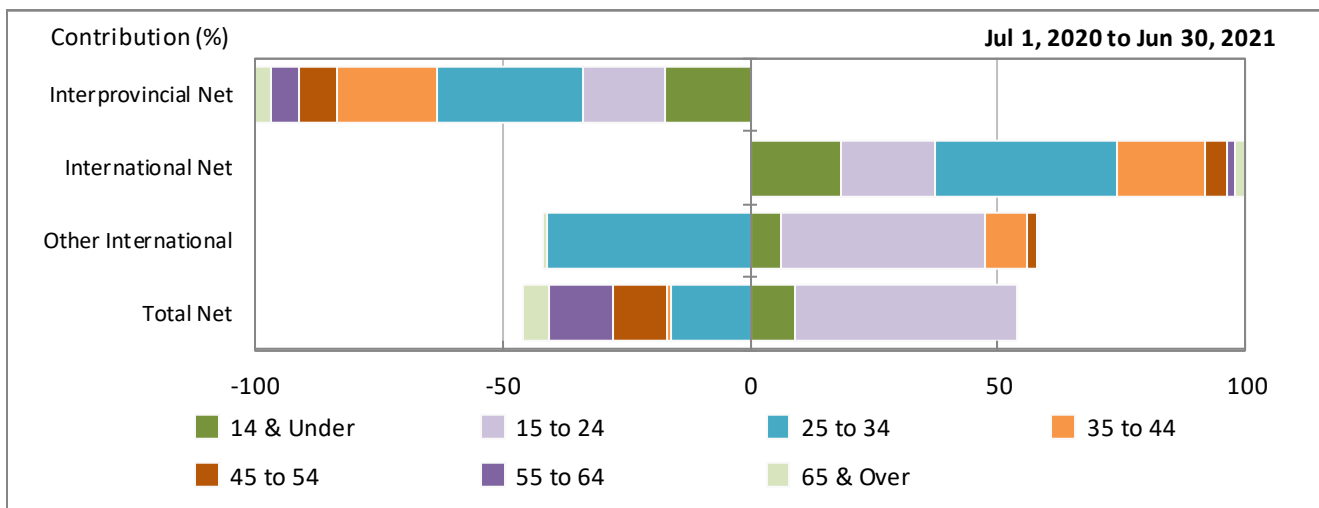
During the twelve months ending June 30, 2021, Manitoba recorded a net inflow of 432 other international migrants. Manitoba's inflow was largely determined by a net inflow of 1,092 migrants 15 to 24 years of age, together with a net outflow of 1,082 migrants 25 to 34 years of age. Manitoba's other international inflow decreased by 159 people compared to ten years ago, comprised mostly of an increased net outflow of individuals 25 to 34 years of age.

**Age Group Contribution?**

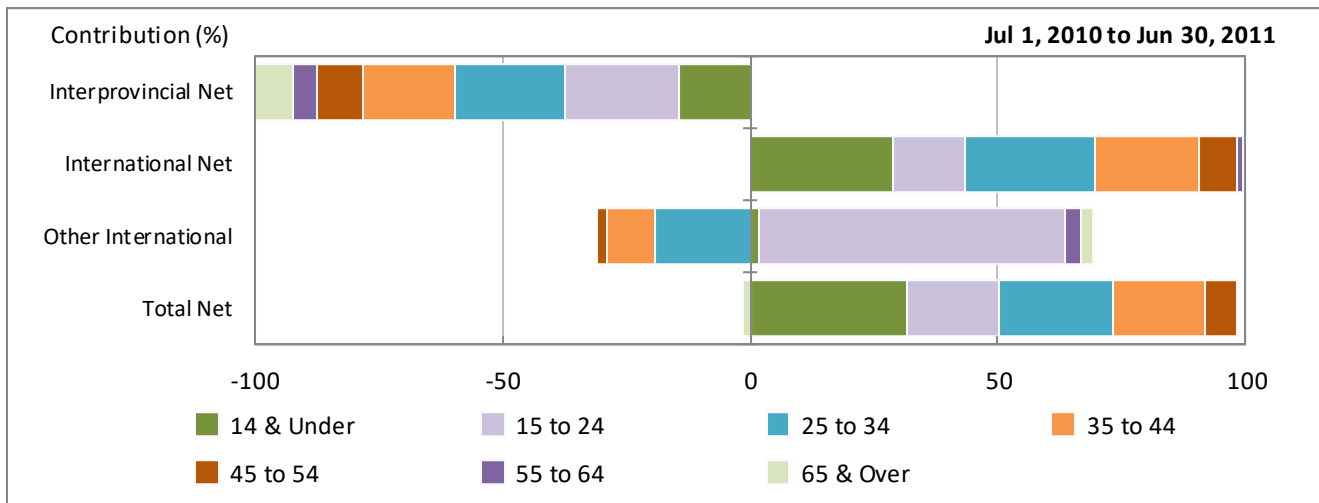
An age group contribution chart is a graphical illustration showing the composition of migration components by age group. They highlight age structure differences among components and over time. In some cases the impact of an individual age group may be opposite from the overall impact of a migration component.

**Net Migration by Type, Showing Age Group Contributions - Manitoba**

**Current**



**Ten Years Ago**



Source: Statistics Canada, Tables 17-10-0014-01 and 17-10-0015-01

Contact: Manitoba Bureau of Statistics [mbs@gov.mb.ca](mailto:mbs@gov.mb.ca)  
 MBS public website: <https://www.gov.mb.ca/mbs/moreinfo.html?id=18>