

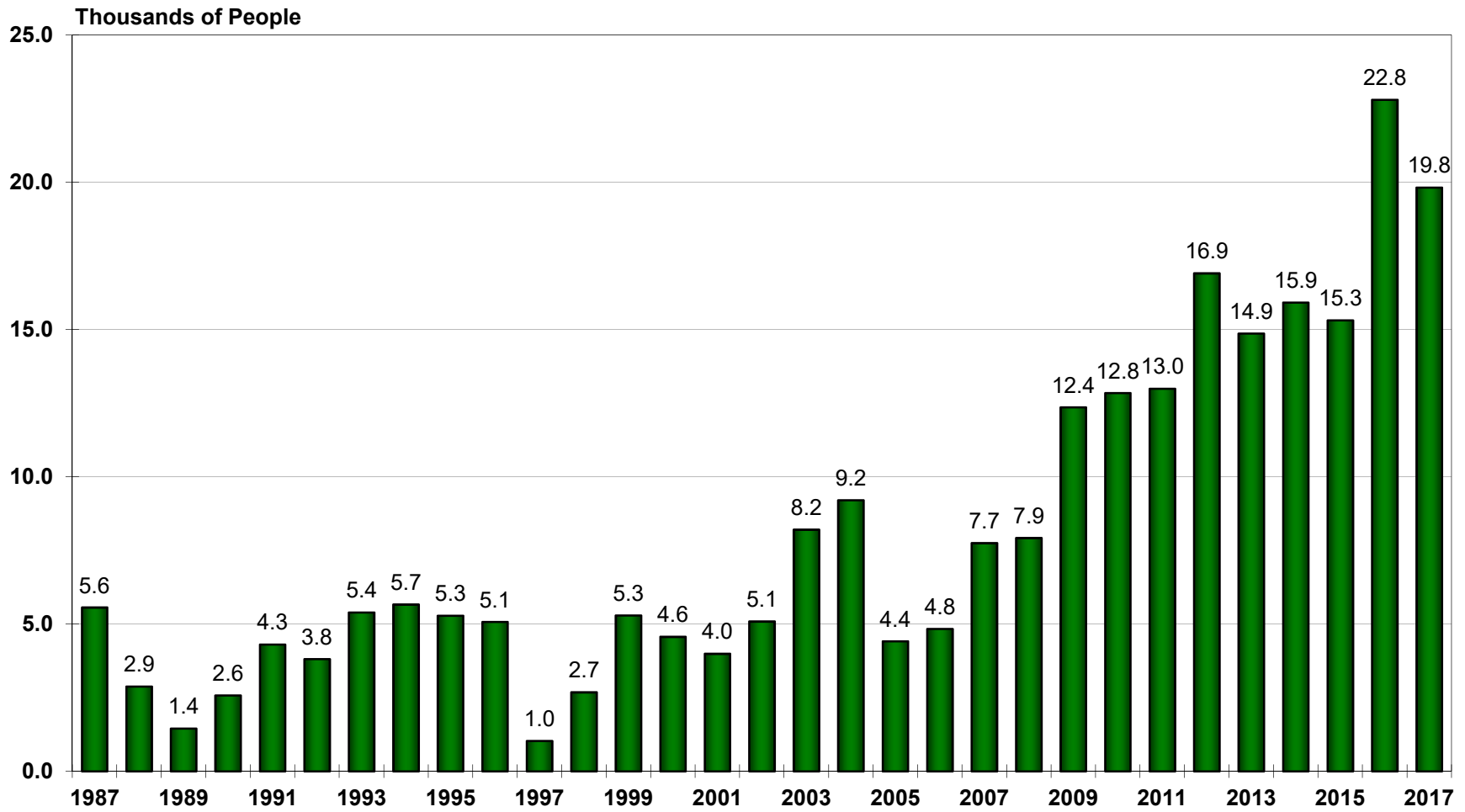
Manitoba's Population Trends Past and Present

Population	Date
25,228	April 2, 1871
800,000	July 31, 1952
1,000,000	March 24, 1972
1,100,000	January 13, 1988
1,150,000	April 17, 2001
1,200,000	October 19, 2008
1,250,000	June 26, 2012
1,275,000	March 3, 2014
1,300,000	September 17, 2015
1,325,000	November 1, 2016
1,343,000	October 1, 2017

Source: Manitoba Bureau of Statistics and Statistics Canada

December 20, 2017

MANITOBA ANNUAL POPULATION GROWTH OCTOBER 1987 TO OCTOBER 2017



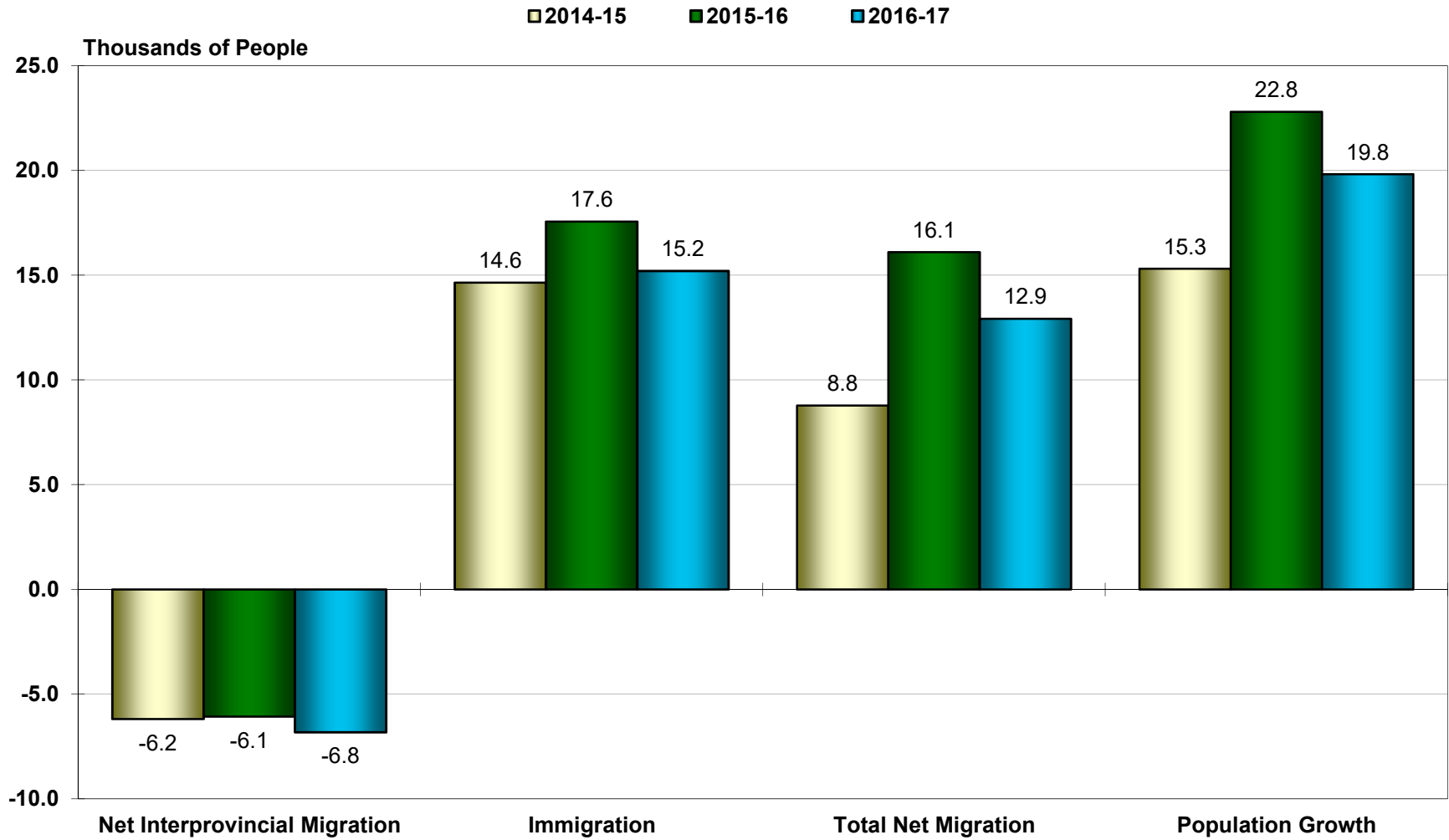
*Note: Annual growth refers to the growth from October of the previous year to October of the current year.

DATA SOURCE: STATISTICS CANADA

MANITOBA BUREAU OF STATISTICS

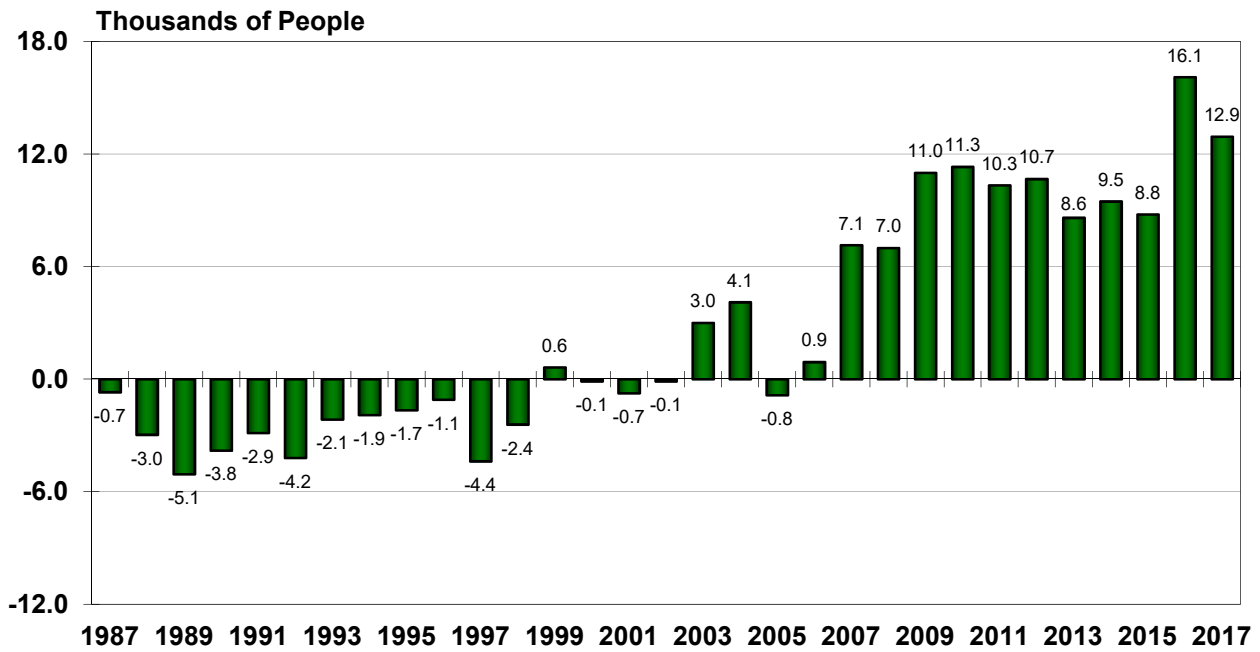
DECEMBER 20, 2017

MANITOBA COMPARISONS ANNUAL GROWTH 2014-15, 2015-16 AND 2016-17

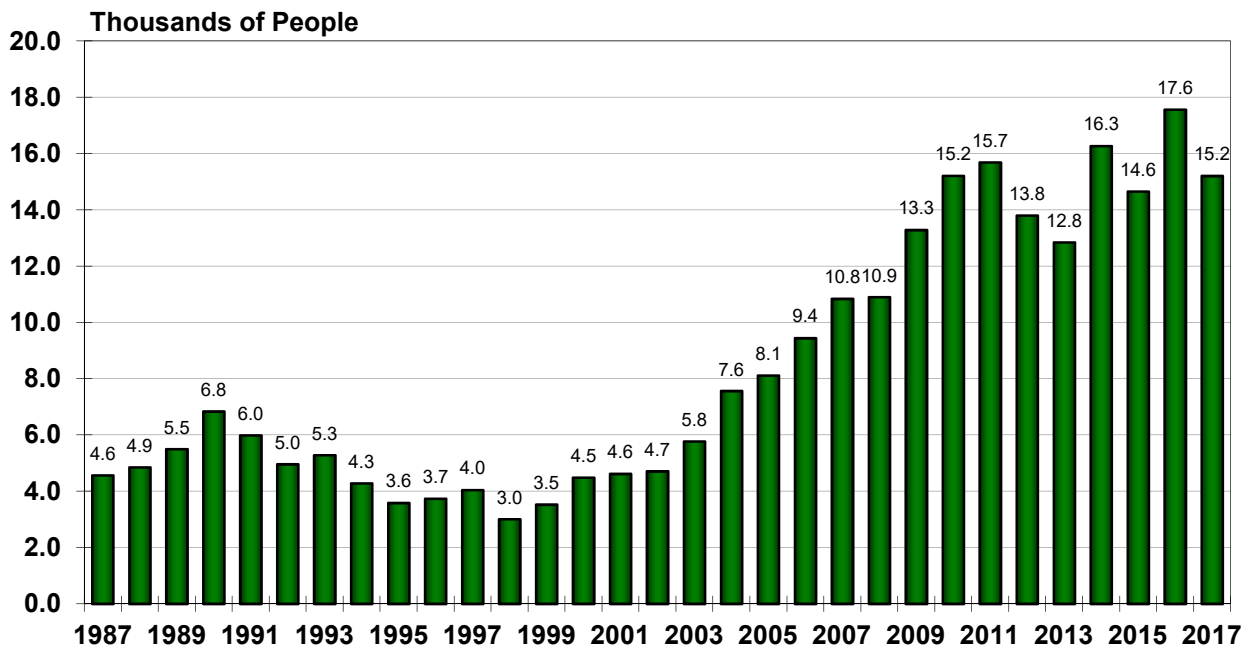


NOTE: DATA IS FROM OCTOBER 1 TO SEPTEMBER 30.

MANITOBA ANNUAL TOTAL NET MIGRATION OCTOBER 1986 TO OCTOBER 2017



MANITOBA ANNUAL IMMIGRATION OCTOBER 1986 TO OCTOBER 2017



*Note: Annual number refers to the period from Oct. 1 of the previous year to Sept. 30 of the current year.

DATA SOURCE: STATISTICS CANADA

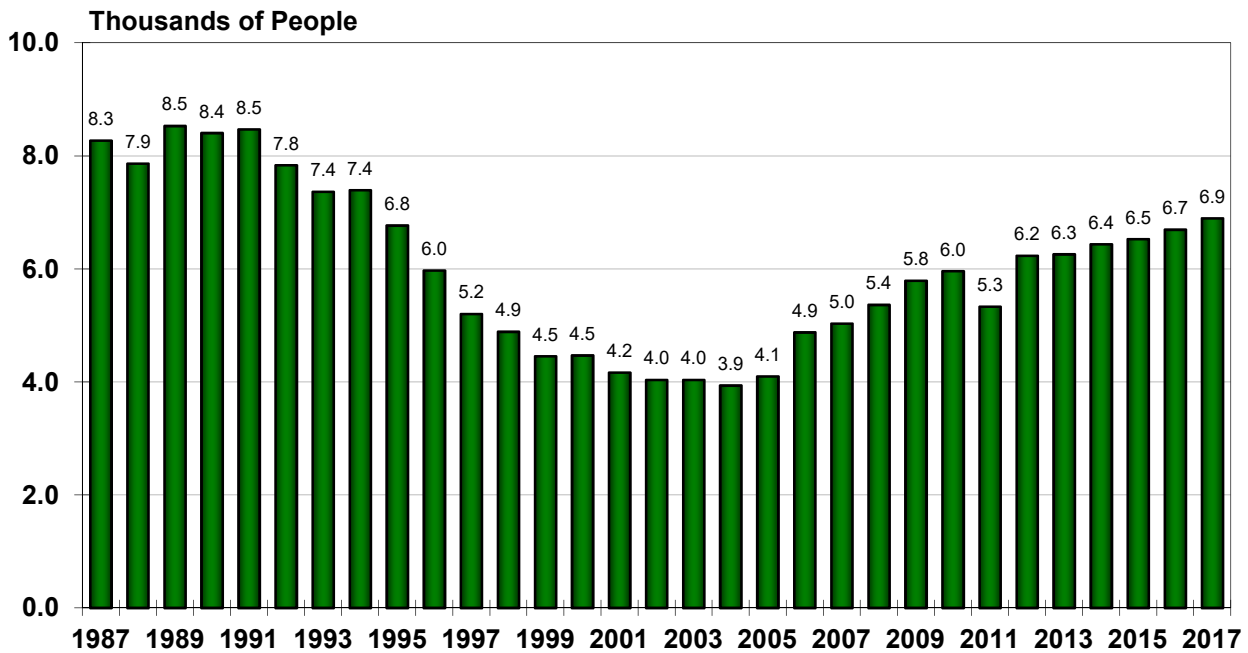
MANITOBA BUREAU OF STATISTICS

DECEMBER 20, 2017

MANITOBA ANNUAL NET INTERPROVINCIAL MIGRATION OCTOBER 1986 TO OCTOBER 2017



MANITOBA ANNUAL NATURAL INCREASE OCTOBER 1986 TO OCTOBER 2017



*Note: Annual number refers to the period from Oct. 1 of the previous year to Sept. 30 of the current year.

DATA SOURCE: STATISTICS CANADA

MANITOBA BUREAU OF STATISTICS

DECEMBER 20, 2017

TABLE 1: MANITOBA DEMOGRAPHIC STATISTICS (ANNUAL)

YEAR	INTERPROVINCIAL MIGRATION	INTERNATIONAL MIGRATION		OTHER TOTAL NET (1) MIGRATION		NATURAL INCREASE			POPULATION GROWTH	
	NET	IN	OUT	NET		BIRTHS	DEATHS	NET		
1971-72	-8,659	5,114	2,468	2,646	1,584	-4,429	17,482	8,173	9,309	2,725
1972-73	-3,874	5,564	2,642	2,922	1,642	690	16,903	8,218	8,685	7,226
1973-74	-3,065	8,153	2,937	5,216	1,271	3,422	17,148	8,375	8,773	10,046
1974-75	-5,897	7,423	2,760	4,663	1,645	411	17,400	8,523	8,877	7,139
1975-76	-3,660	5,815	2,423	3,392	1,253	985	16,795	8,097	8,698	7,078
1976-77	-3,974	5,200	2,164	3,036	1,120	182	16,765	8,149	8,616	5,299
1977-78	-7,133	3,860	2,275	1,585	1,051	-4,497	16,401	8,348	8,053	58
1978-79	-12,031	3,785	2,101	1,684	1,381	-8,966	16,351	8,226	8,125	-4,339
1979-80	-12,135	8,016	1,606	6,410	1,440	-4,285	16,022	8,401	7,621	-172
1980-81	-7,603	5,678	1,874	3,804	1,821	-1,978	15,951	8,557	7,394	3,166
1981-82	537	5,017	1,856	3,161	1,046	4,744	16,170	8,580	7,590	12,633
1982-83	2,160	4,287	1,975	2,312	1,314	5,786	16,577	8,525	8,052	14,136
1983-84	-479	3,905	1,638	2,267	767	2,555	16,653	8,372	8,281	11,136
1984-85	-1,212	3,498	1,866	1,632	858	1,278	16,951	8,600	8,351	9,928
1985-86	-2,968	3,754	1,833	1,921	937	-110	17,093	8,899	8,194	7,620
1986-87	-4,074	4,566	1,892	2,674	708	-692	16,982	8,711	8,271	5,559
1987-88	-7,149	4,850	2,055	2,795	1,393	-2,961	16,905	9,040	7,865	2,879
1988-89	-9,844	5,501	2,429	3,072	1,711	-5,061	17,312	8,783	8,529	1,448
1989-90	-9,319	6,835	2,250	4,585	926	-3,808	17,418	9,014	8,404	2,576
1990-91	-7,437	5,987	2,173	3,814	759	-2,864	17,211	8,741	8,470	4,302
1991-92	-6,796	4,959	2,020	2,939	-343	-4,200	16,862	9,027	7,835	3,809
1992-93	-5,163	5,281	1,932	3,349	-331	-2,145	16,612	9,247	7,365	5,394
1993-94	-4,037	4,284	1,879	2,405	-274	-1,906	16,506	9,114	7,392	5,660
1994-95	-3,711	3,582	1,767	1,815	238	-1,658	16,336	9,568	6,768	5,284
1995-96	-3,247	3,739	1,454	2,285	-126	-1,088	15,517	9,544	5,973	5,072
1996-97	-6,692	4,044	1,875	2,169	145	-4,378	14,819	9,618	5,201	1,030
1997-98	-3,806	3,009	1,791	1,218	173	-2,415	14,508	9,621	4,887	2,679
1998-99	-2,305	3,524	1,656	1,868	1,066	629	14,341	9,887	4,454	5,290
1999-00	-3,806	4,488	1,652	2,836	860	-110	14,365	9,897	4,468	4,565
2000-01	-4,665	4,615	1,655	2,960	959	-746	13,931	9,766	4,165	3,989
2001-02	-4,514	4,709	1,385	3,324	1,081	-109	13,802	9,768	4,034	5,086
2002-03	-2,353	5,773	1,591	4,182	1,177	3,006	13,829	9,794	4,035	8,202
2003-04	-3,305	7,560	1,419	6,141	1,265	4,101	13,954	10,018	3,936	9,202
2004-05	-7,757	8,117	1,712	6,405	503	-849	13,979	9,881	4,098	4,410
2005-06	-7,976	9,439	1,748	7,691	1,197	912	14,494	9,618	4,876	4,835
2006-07	-4,031	10,838	1,558	9,280	1,894	7,143	15,098	10,065	5,033	7,746
2007-08	-4,189	10,902	1,548	9,354	1,831	6,996	15,420	10,057	5,363	7,918
2008-09	-2,108	13,282	1,504	11,778	1,329	10,999	15,722	9,933	5,789	12,358
2009-10	-2,834	15,210	1,542	13,668	480	11,314	15,829	9,869	5,960	12,844
2010-11	-3,736	15,685	1,691	13,994	79	10,337	15,732	10,401	5,331	12,986
2011-12	-4,092	13,798	1,415	12,383	2,380	10,671	16,293	10,059	6,234	16,905
2012-13	-5,362	12,846	1,499	11,347	2,617	8,602	16,338	10,080	6,258	14,860
2013-14	-7,275	16,266	1,816	14,450	2,302	9,477	16,670	10,234	6,436	15,913
2014-15	-6,187	14,649	2,007	12,642	2,328	8,783	16,953	10,424	6,529	15,312
2015-16	-6,071	17,565	2,014	15,551	6,626	16,106	17,320	10,625	6,695	22,801
2016-17	-6,817	15,205	2,018	13,187	6,554	12,924	17,729	10,832	6,897	19,821

NOTE: DATA IS FROM OCTOBER 1 TO SEPTEMBER 30.

(1) PRIOR TO THE THIRD QUARTER OF 1996 "OTHER" INCLUDED NET NON-PERMANENT RESIDENTS AND RETURNING EMIGRANTS ONLY. FROM THE THIRD QUARTER OF 1996 TO THE PRESENT, "OTHER" INCLUDES NET NON-PERMANENT RESIDENTS AND RETURNING EMIGRANTS LESS NET TEMPORARY EMIGRANTS (FORMERLY CALLED TEMPORARY ABROAD)

DATA SOURCE: STATISTICS CANADA

MANITOBA BUREAU OF STATISTICS
DECEMBER 20, 2017

TABLE 1: MANITOBA DEMOGRAPHIC STATISTICS

	INTERPROVINCIAL	INTERNATIONAL		OTHER	TOTAL	NATURAL INCREASE			POPULATION	
	MIGRATION	MIGRATION	MIGRATION	(1)	NET	BIRTHS	DEATHS	NET	ESTIMATES	
	NET	IN	OUT	NET					(2)	
									('000)	
2002	-4,120	4,615	1,405	3,210	1,180	270	13,888	9,849	4,039	1,156.6
2003	-2,189	6,503	1,586	4,917	1,321	4,049	13,940	9,867	4,073	1,163.5
2004	-3,823	7,426	1,353	6,073	1,115	3,365	13,811	9,903	3,908	1,173.2
2005	-8,602	8,097	1,829	6,268	727	-1,607	14,145	9,857	4,288	1,178.3
2006	-7,277	10,047	1,686	8,361	1,006	2,090	14,565	9,774	4,791	1,183.5
2007	-3,449	10,955	1,573	9,382	2,136	8,069	15,285	9,958	5,327	1,189.4
2008	-3,931	11,219	1,594	9,625	1,661	7,355	15,485	10,073	5,412	1,197.8
2009	-2,514	13,520	1,459	12,061	1,199	10,746	15,940	9,972	5,968	1,208.6
2010	-2,590	15,808	1,640	14,168	303	11,881	15,786	9,985	5,801	1,220.9
2011	-4,171	15,964	1,529	14,435	725	10,989	15,620	10,246	5,374	1,233.7
2012	-3,928	13,312	1,480	11,832	2,315	10,219	16,358	10,062	6,296	1,250.3
2013	-6,146	13,103	1,519	11,584	2,410	7,848	16,468	10,095	6,373	1,265.6
2014	-6,884	16,224	1,861	14,363	2,126	9,605	16,743	10,280	6,463	1,280.9
2015	-5,859	14,907	2,008	12,899	3,648	10,688	17,019	10,472	6,547	1,295.4
2016	-6,271	16,826	2,016	14,810	6,488	15,027	17,436	10,677	6,759	1,318.1
2011										
1Q	-915	3,089	303	2,786	113	1,984	3,687	2,752	935	1,229.1
2Q	-990	4,615	380	4,235	378	3,623	3,946	2,455	1,491	1,233.7
3Q	-1,474	4,523	530	3,993	-167	2,352	4,138	2,459	1,679	1,237.8
4Q	-792	3,737	316	3,421	401	3,030	3,849	2,580	1,269	1,242.1
2012										
1Q	-782	3,246	265	2,981	188	2,387	3,927	2,567	1,360	1,245.8
2Q	-1,164	3,581	336	3,245	790	2,871	4,069	2,480	1,589	1,250.3
3Q	-1,354	3,234	498	2,736	1,001	2,383	4,448	2,432	2,016	1,254.7
4Q	-628	3,251	381	2,870	336	2,578	3,914	2,583	1,331	1,258.6
2013										
1Q	-1,031	2,609	270	2,339	490	1,798	3,912	2,651	1,261	1,261.6
2Q	-1,993	3,586	321	3,265	999	2,271	4,214	2,529	1,685	1,265.6
3Q	-1,710	3,400	527	2,873	792	1,955	4,298	2,317	1,981	1,269.5
4Q	-1,412	3,508	401	3,107	129	1,824	4,044	2,598	1,446	1,272.8
2014										
1Q	-1,646	3,697	390	3,307	290	1,951	3,974	2,703	1,271	1,276.0
2Q	-2,083	4,836	315	4,521	753	3,191	4,281	2,576	1,705	1,280.9
3Q	-2,134	4,225	710	3,515	1,130	2,511	4,371	2,357	2,014	1,285.4
4Q	-1,021	3,466	446	3,020	-47	1,952	4,117	2,644	1,473	1,288.9
2015										
1Q	-1,738	3,070	455	2,615	27	904	4,045	2,753	1,292	1,291.1
2Q	-1,785	4,038	395	3,643	780	2,638	4,352	2,626	1,726	1,295.4
3Q	-1,643	4,075	711	3,364	1,568	3,289	4,439	2,401	2,038	1,300.7
4Q	-693	3,724	447	3,277	1,273	3,857	4,183	2,692	1,491	1,306.1
2016										
1Q	-888	4,311	456	3,855	970	3,937	4,123	2,806	1,317	1,311.4
2Q	-1,657	5,295	398	4,897	1,748	4,988	4,456	2,680	1,776	1,318.1
3Q	-2,833	4,235	713	3,522	2,635	3,324	4,558	2,447	2,111	1,323.6
4Q	-893	2,985	449	2,536	1,135	2,778	4,299	2,744	1,555	1,327.9
2017										
1Q	-1,289	3,926	458	3,468	529	2,708	4,228	2,859	1,369	1,332.0
2Q	-1,891	4,533	398	4,135	2,081	4,325	4,556	2,732	1,824	1,338.1
3Q	-2,744	3,761	713	3,048	2,809	3,113	4,646	2,497	2,149	1,343.4
4Q										

(1) PRIOR TO THE THIRD QUARTER OF 1996 "OTHER" INCLUDED NET NON-PERMANENT RESIDENTS AND RETURNING EMIGRANTS ONLY. FROM THE THIRD QUARTER OF 1996 TO THE PRESENT, "OTHER" INCLUDES NET NON-PERMANENT RESIDENTS AND RETURNING EMIGRANTS LESS NET TEMPORARY EMIGRANTS (FORMERLY CALLED TEMPORARY ABROAD).

(2) ANNUAL ESTIMATES ARE AS OF JULY 1ST.

DATA SOURCE: STATISTICS CANADA

MANITOBA BUREAU OF STATISTICS
DECEMBER 20, 2017