

Hydrologic Forecast Centre - Manitoba Infrastructure

Updated on 19-Nov-19

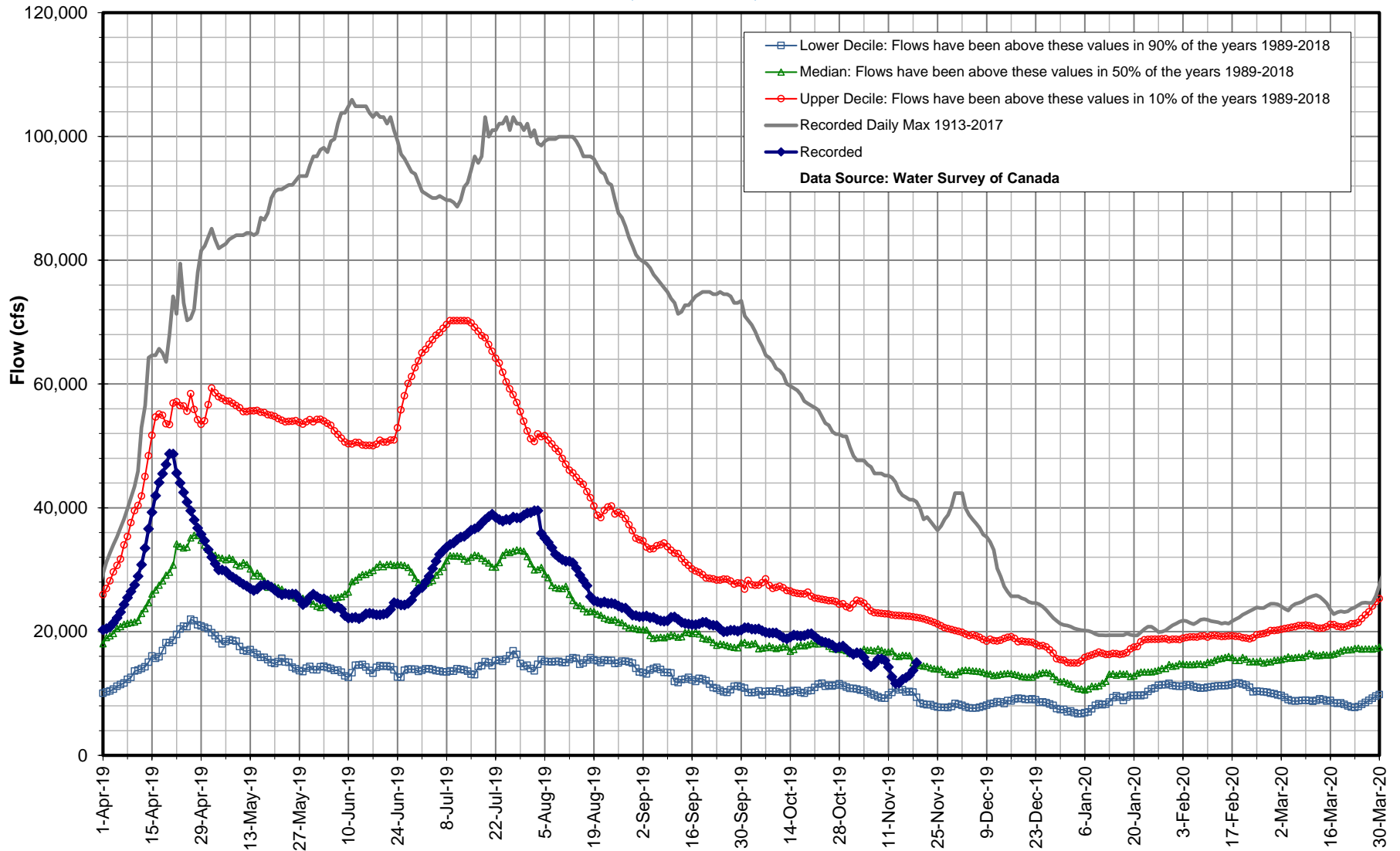
Last Reading Date	Northern Manitoba Flows	
	Hydrometric Stations	Flow (cfs)
19-Nov-19	Saskatchewan River at The Pas	14,975
19-Nov-19	Churchill River above Leaf Rapids	39,141
19-Nov-19	Red Deer River near Erwood	455
19-Nov-19	Carrot River near Turnberry	768

Note: Please go to the next pages to view the historical and current flow hydrographs for these rivers

* Flow and level readings could be ice affected

* Real-time flow and level data is provisional and subject to change. Data provided by Water Survey of Canada

Hydrologic Forecast Centre - Manitoba Infrastructure
Saskatchewan River at the Pas
Nov 19, 2019 : 14,975 cfs

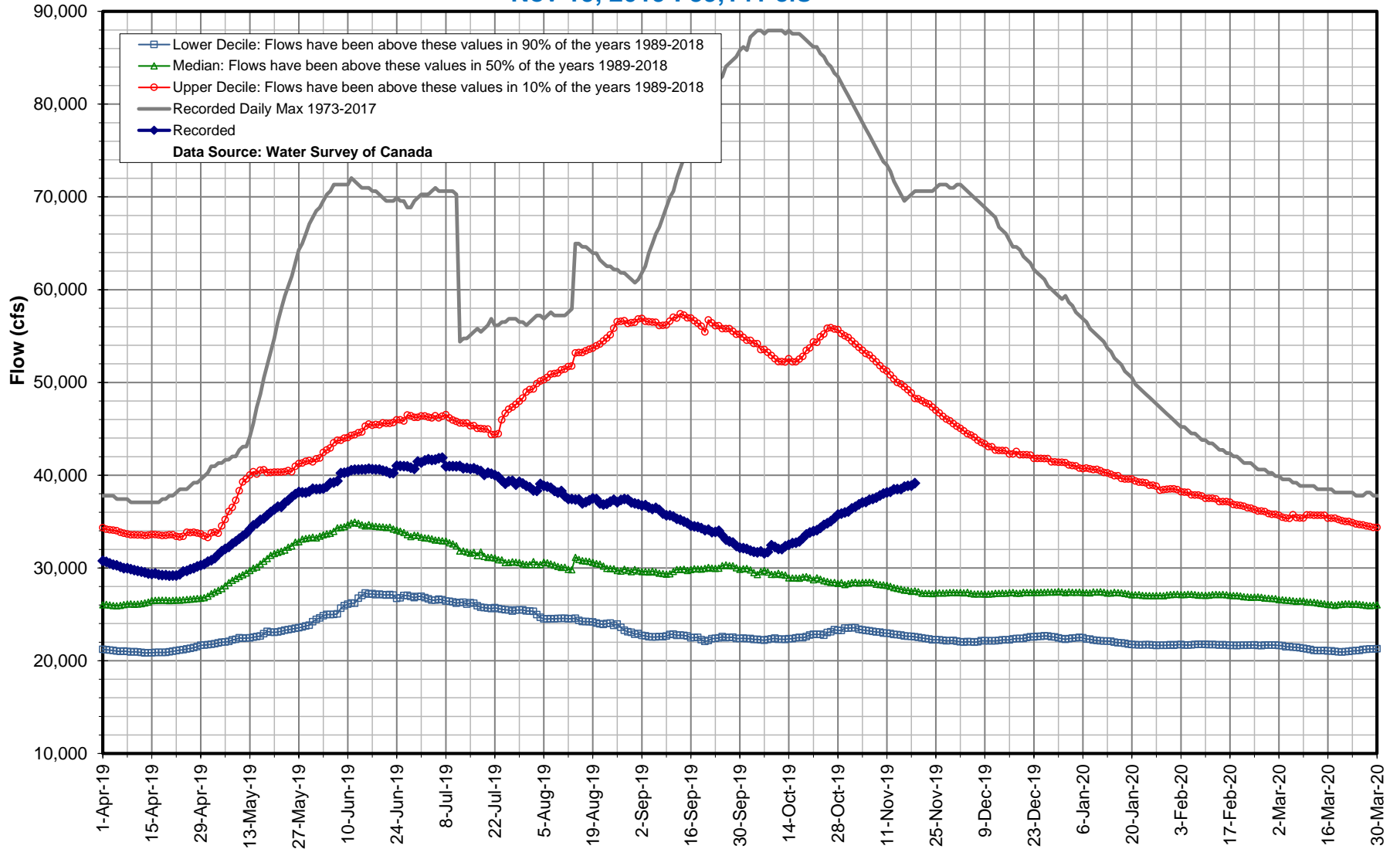


Lower Decile: Flows have been above these values in 90% of the years 1989-2018
Median: Flows have been above these values in 50% of the years 1989-2018
Upper Decile: Flows have been above these values in 10% of the years 1989-2018
Recorded Daily Max 1913-2017
Recorded
Data Source: Water Survey of Canada

Hydrologic Forecast Centre - Manitoba Infrastructure

Churchill River above Leaf Rapids

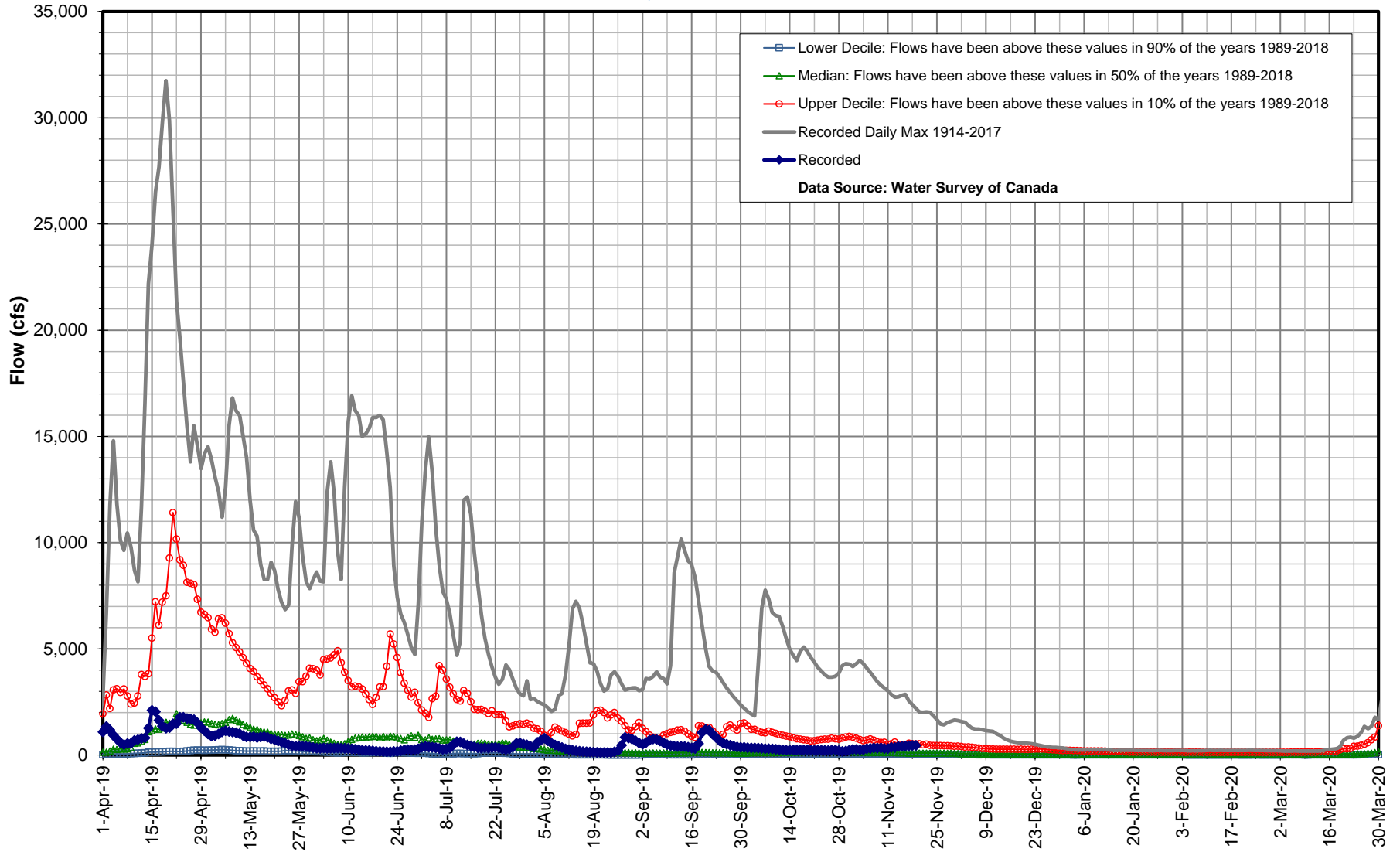
Nov 19, 2019 : 39,141 cfs



Hydrologic Forecast Centre - Manitoba Infrastructure

Red Deer River near Erwood

Nov 19, 2019 : 455 cfs

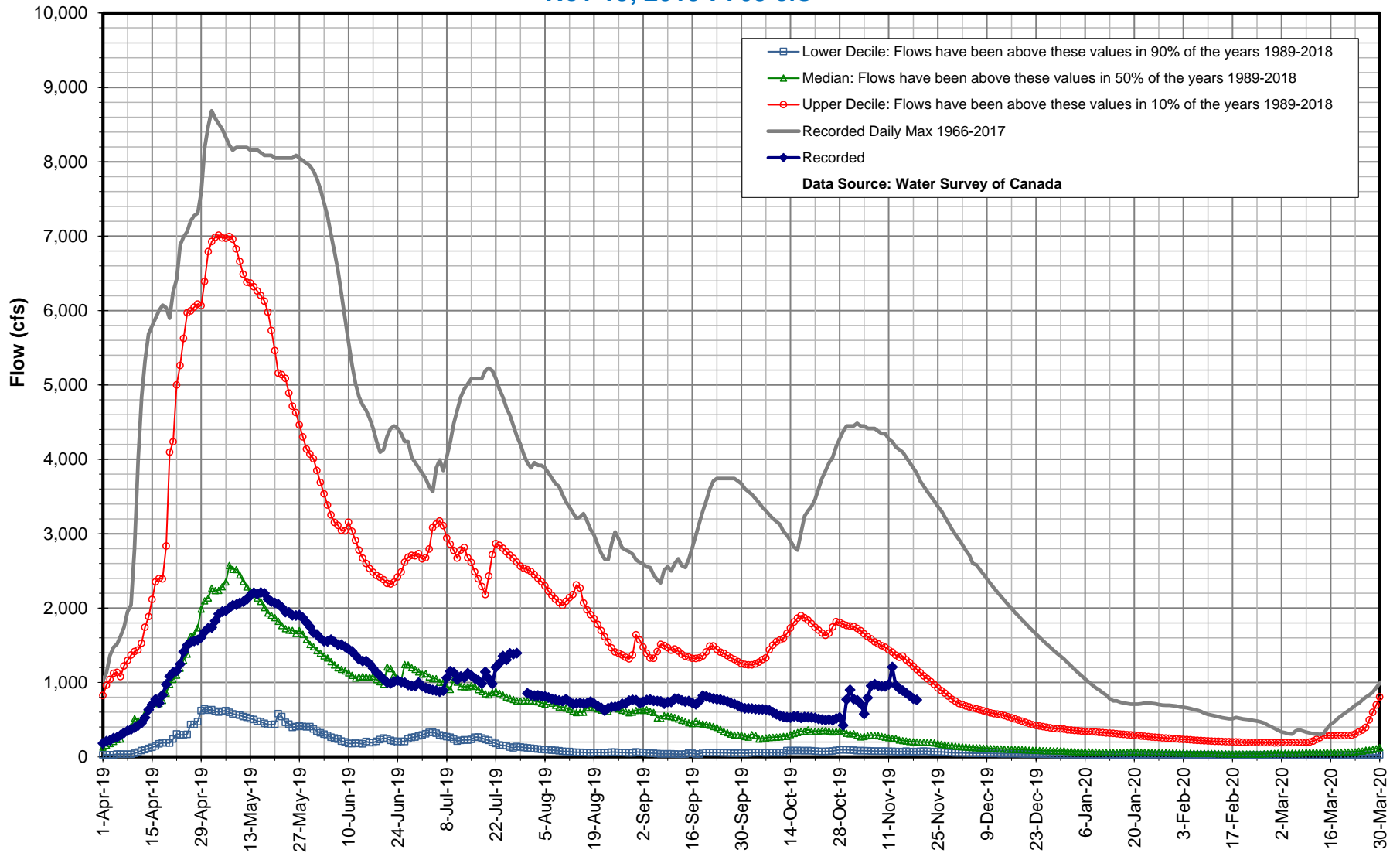


Lower Decile: Flows have been above these values in 90% of the years 1989-2018
Median: Flows have been above these values in 50% of the years 1989-2018
Upper Decile: Flows have been above these values in 10% of the years 1989-2018
Recorded Daily Max 1914-2017
Recorded
Data Source: Water Survey of Canada

Hydrologic Forecast Centre - Manitoba Infrastructure

Carrot River near Turnberry

Nov 19, 2019 : 768 cfs



Data Source: Water Survey of Canada