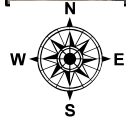
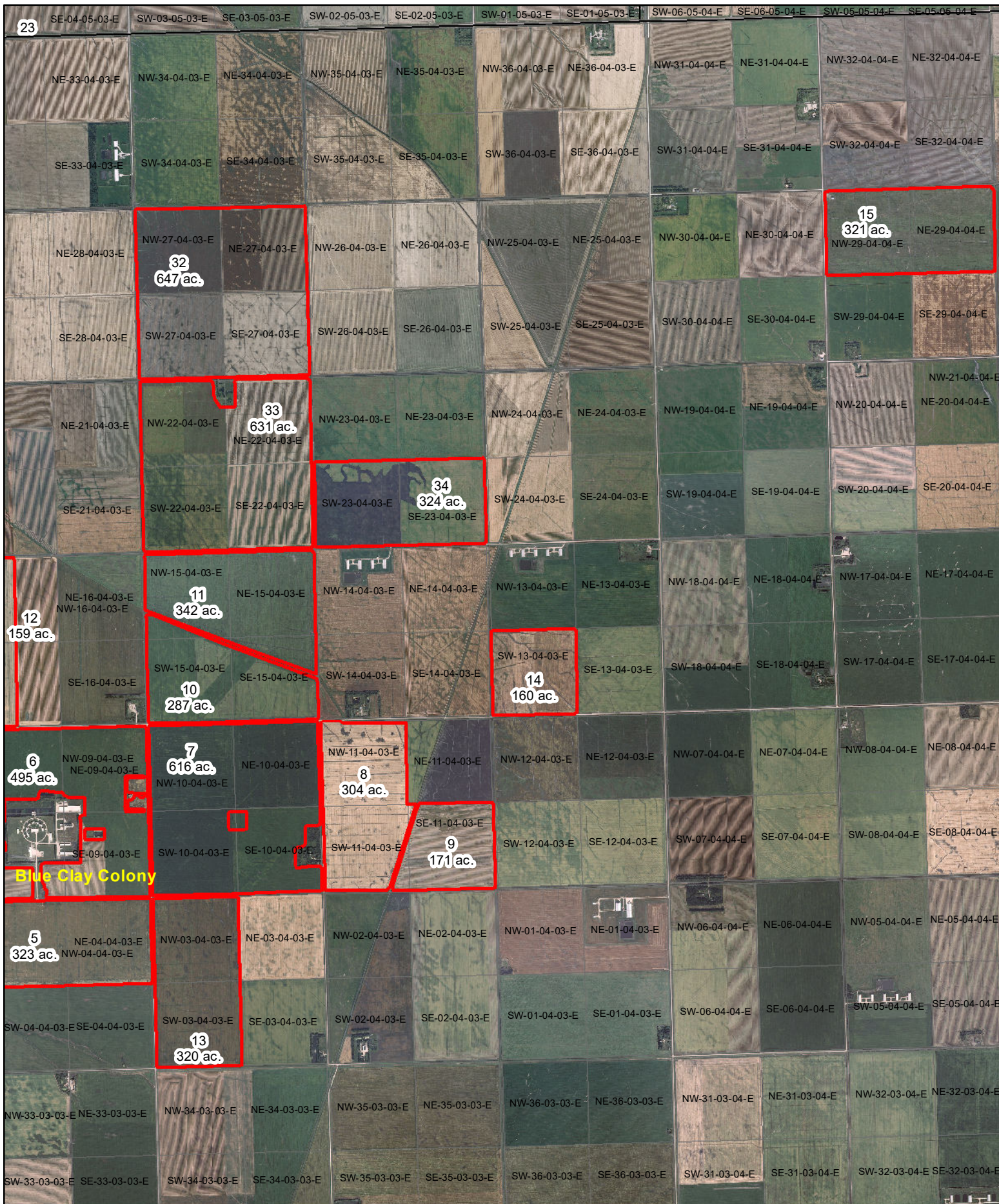
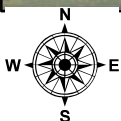
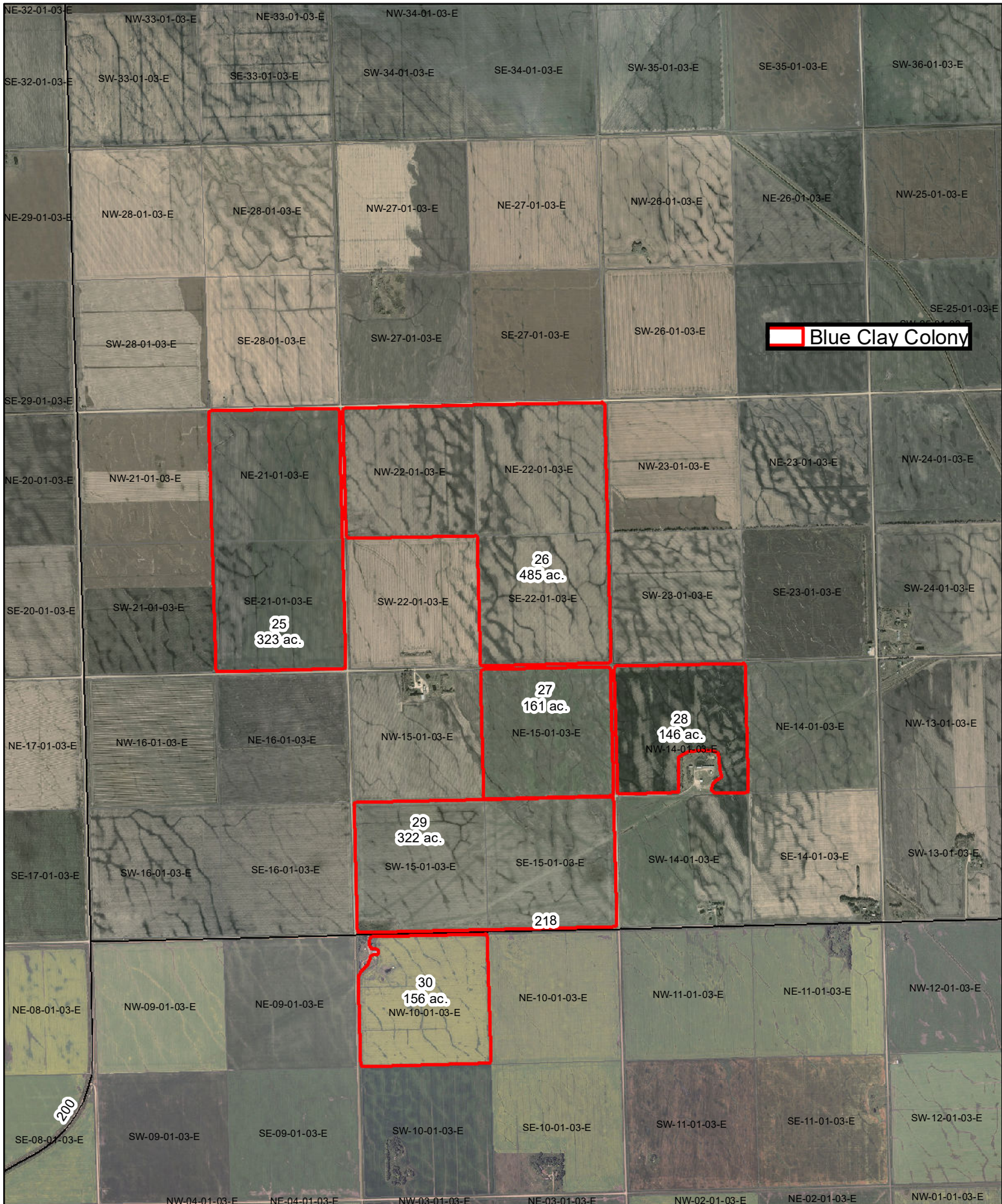


Blue Clay Colony Fields East

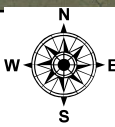
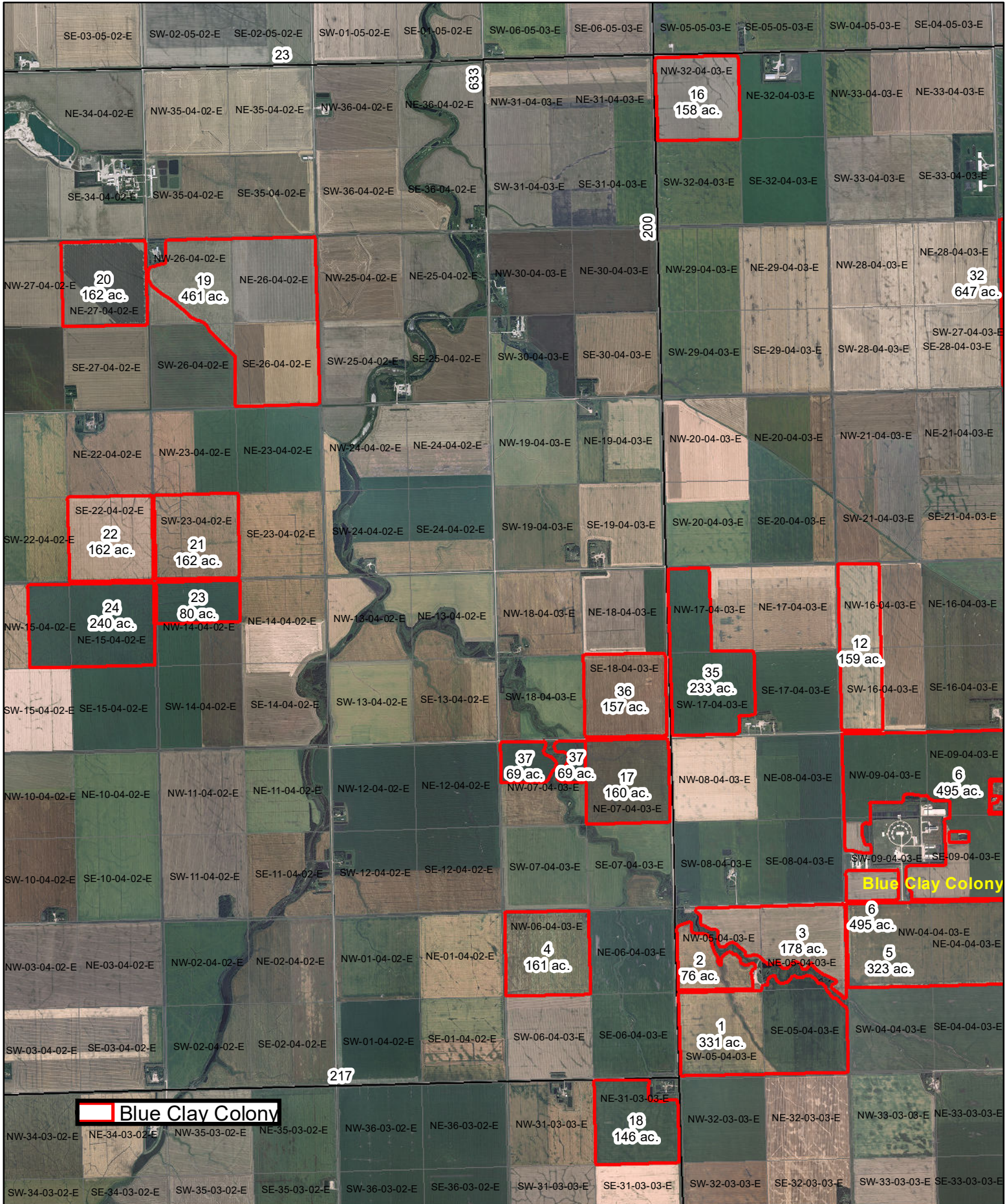


Blue Clay Colony Fields South

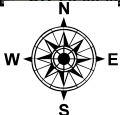
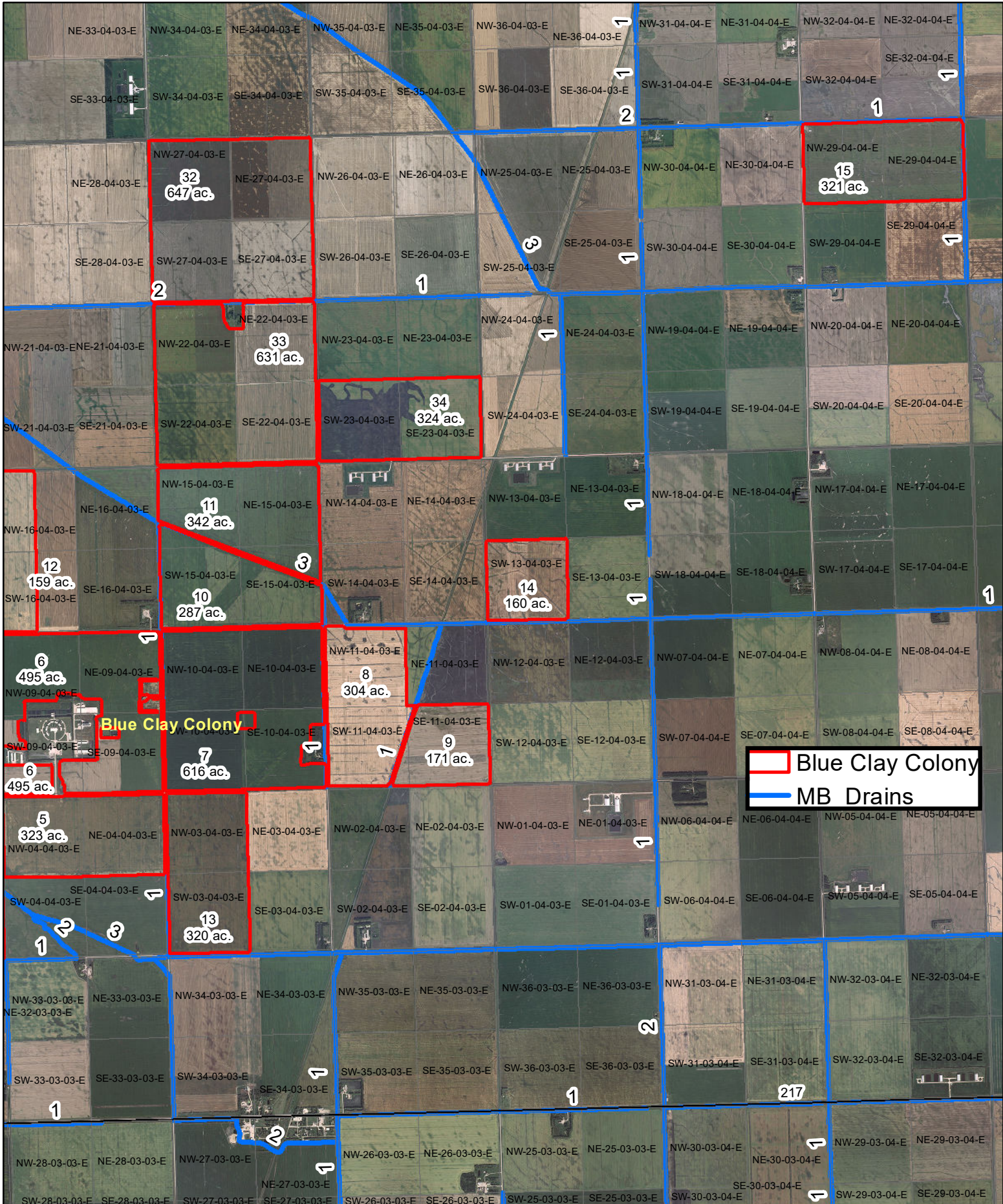


0 0.375 0.75 1.5 Miles

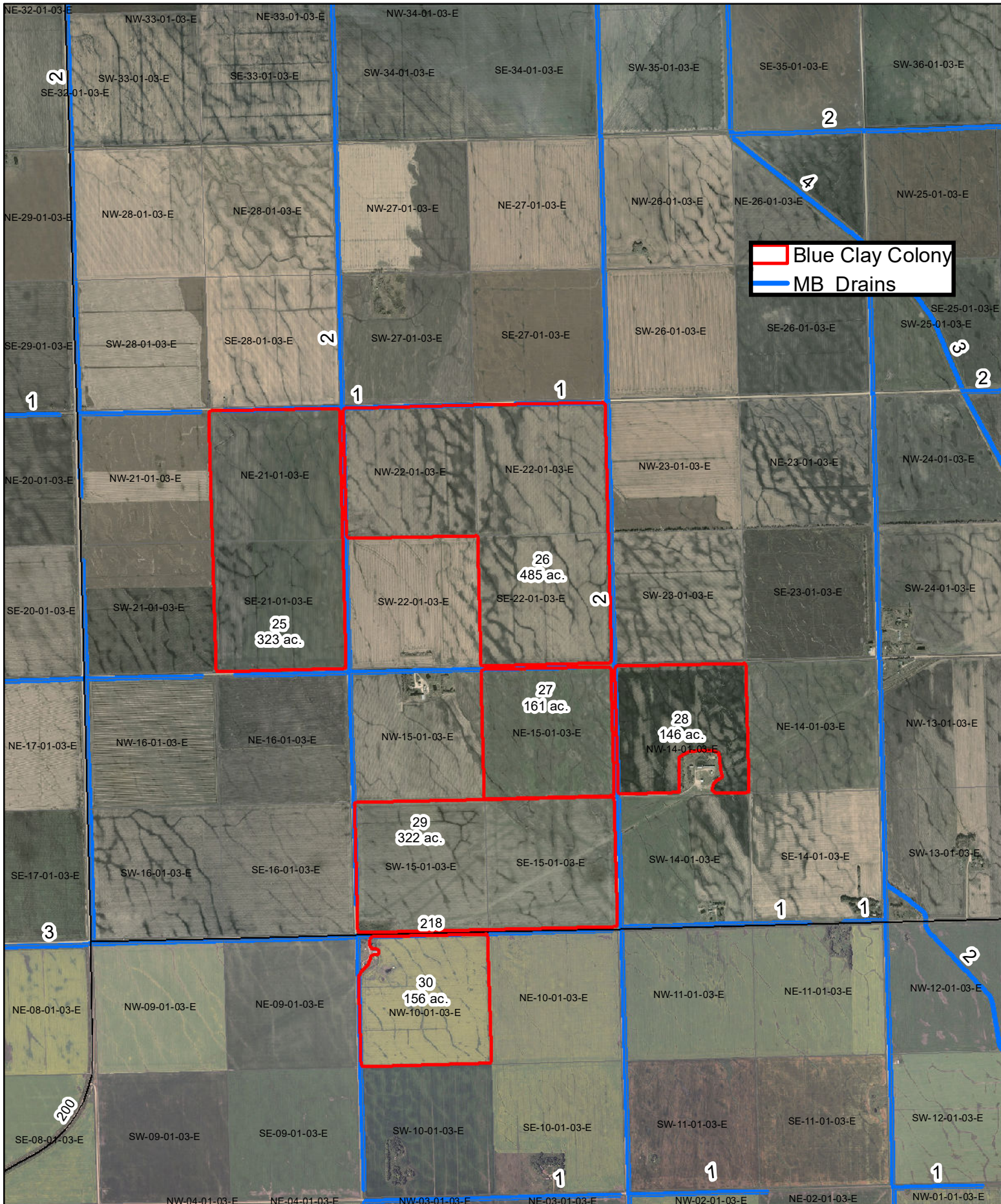
Blue Clay Colony Fields West



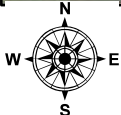
Blue Clay Colony MB Drains East



Blue Clay Colony MB Drains South



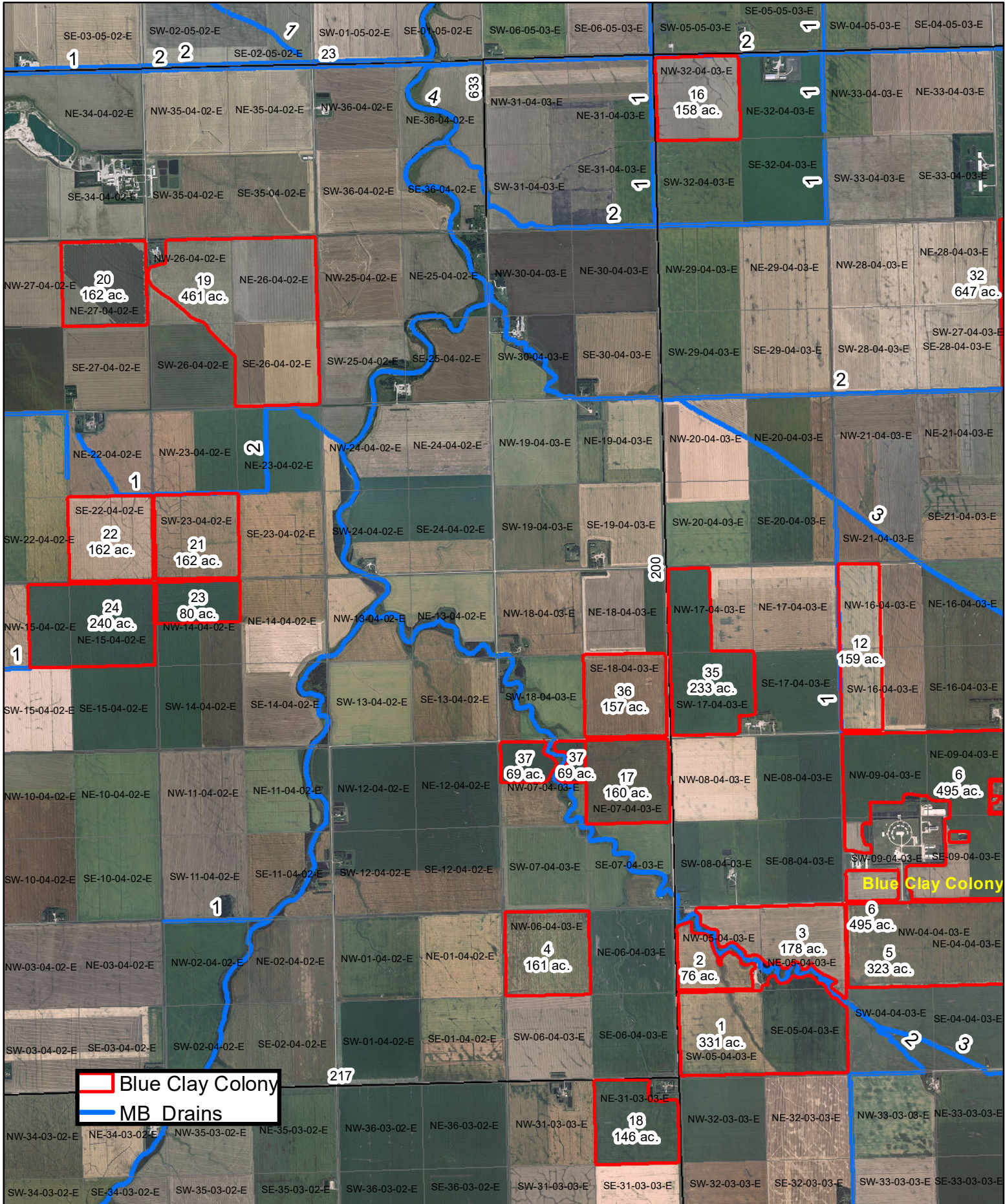
Blue Clay Colony
MB Drains



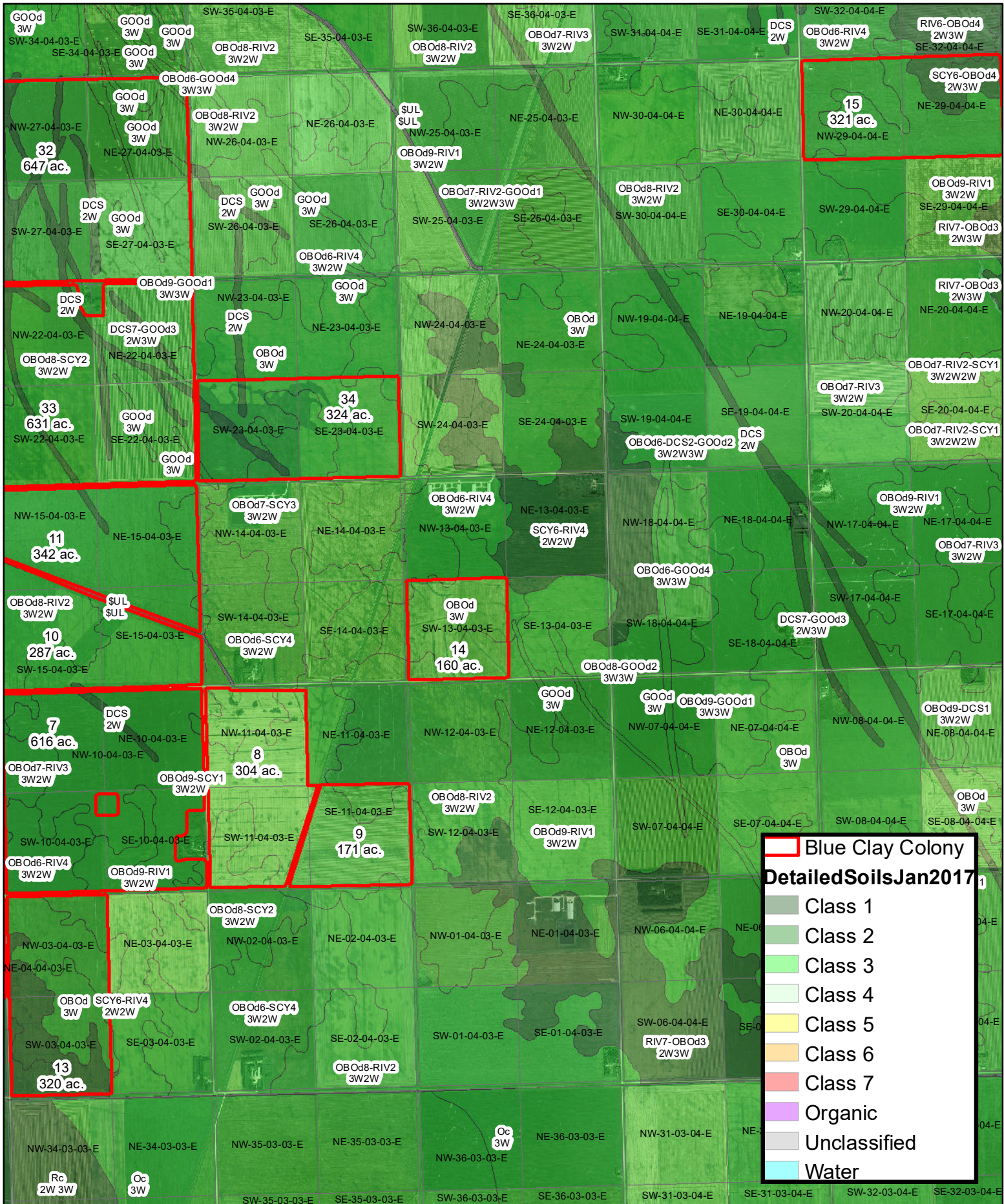
0 0.375 0.75 1.5 Miles



Blue Clay Colony MB Drains West



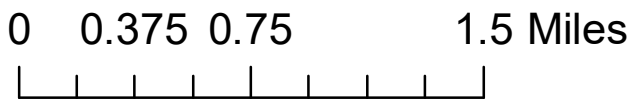
Blue Clay Colony MB Soils East



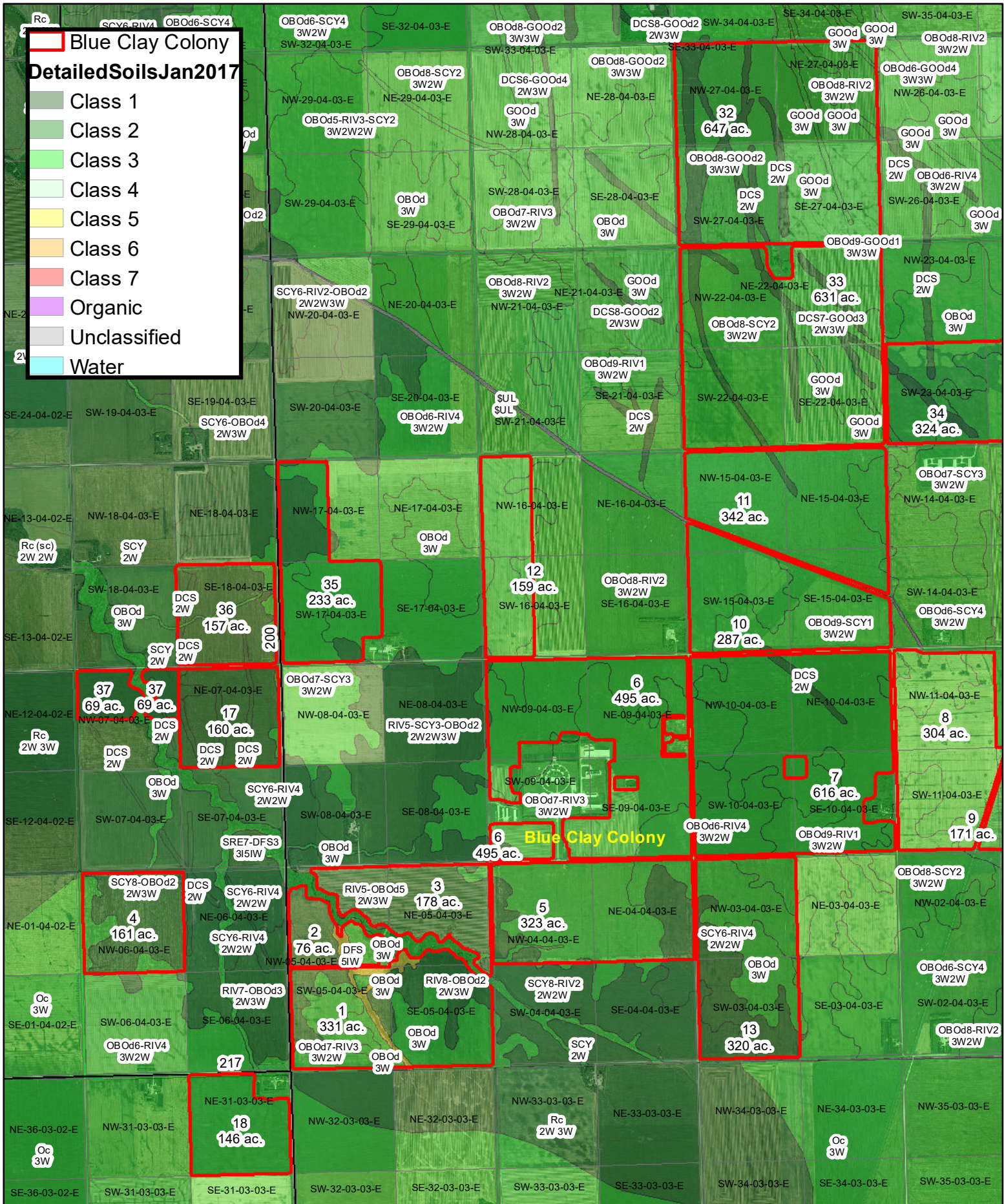
Blue Clay Colony

DetailedSoilsJan2017

- Class 1
- Class 2
- Class 3
- Class 4
- Class 5
- Class 6
- Class 7
- Organic
- Unclassified
- Water



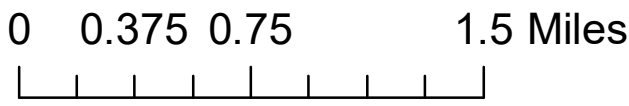
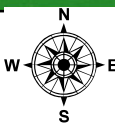
Blue Clay Colony MB Soils Mid



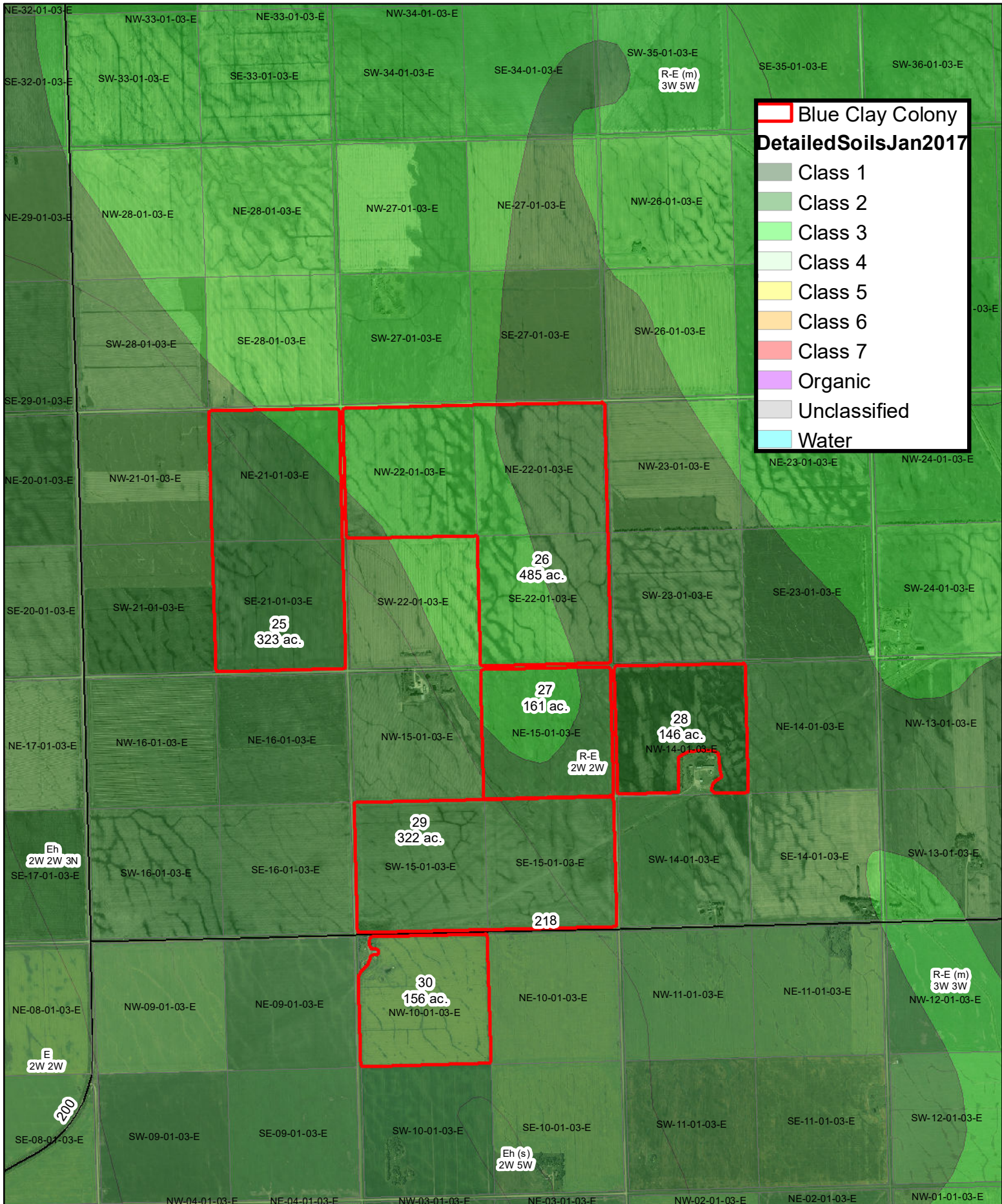
Blue Clay Colony

Detailed Soils Jan 2017

- Class 1
- Class 2
- Class 3
- Class 4
- Class 5
- Class 6
- Class 7
- Organic
- Unclassified
- Water



Blue Clay Colony MB Soils South



0 0.375 0.75 1.5 Miles



Blue Clay Colony MB Soils West (north)

